



COUNCIL MEETING GUEST SPEAKER



Craig P. Coughlin, E.I.

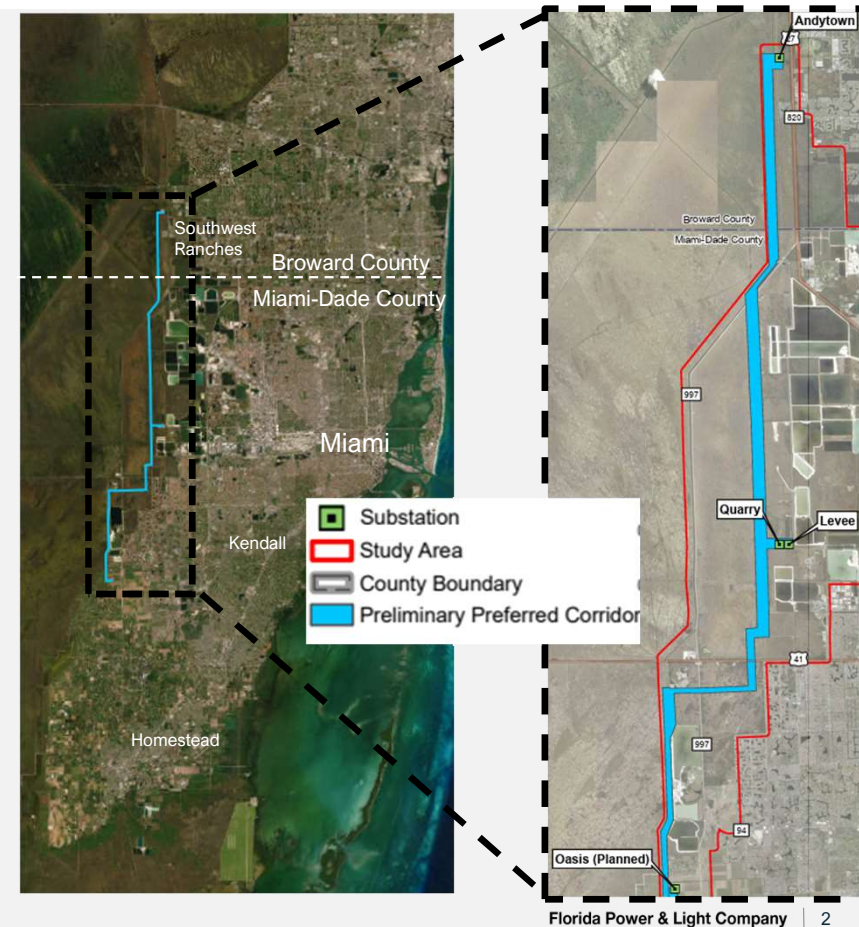
Craig Coughlin Manager of Project Management at Florida Power and Light. Craig graduated from University of Florida with a Bachelor's in Civil Engineering, and has been with Florida Power and Light for 19 years.

Andytown-Oasis Project (AOP)

- Project overview
- History
- Project schedule

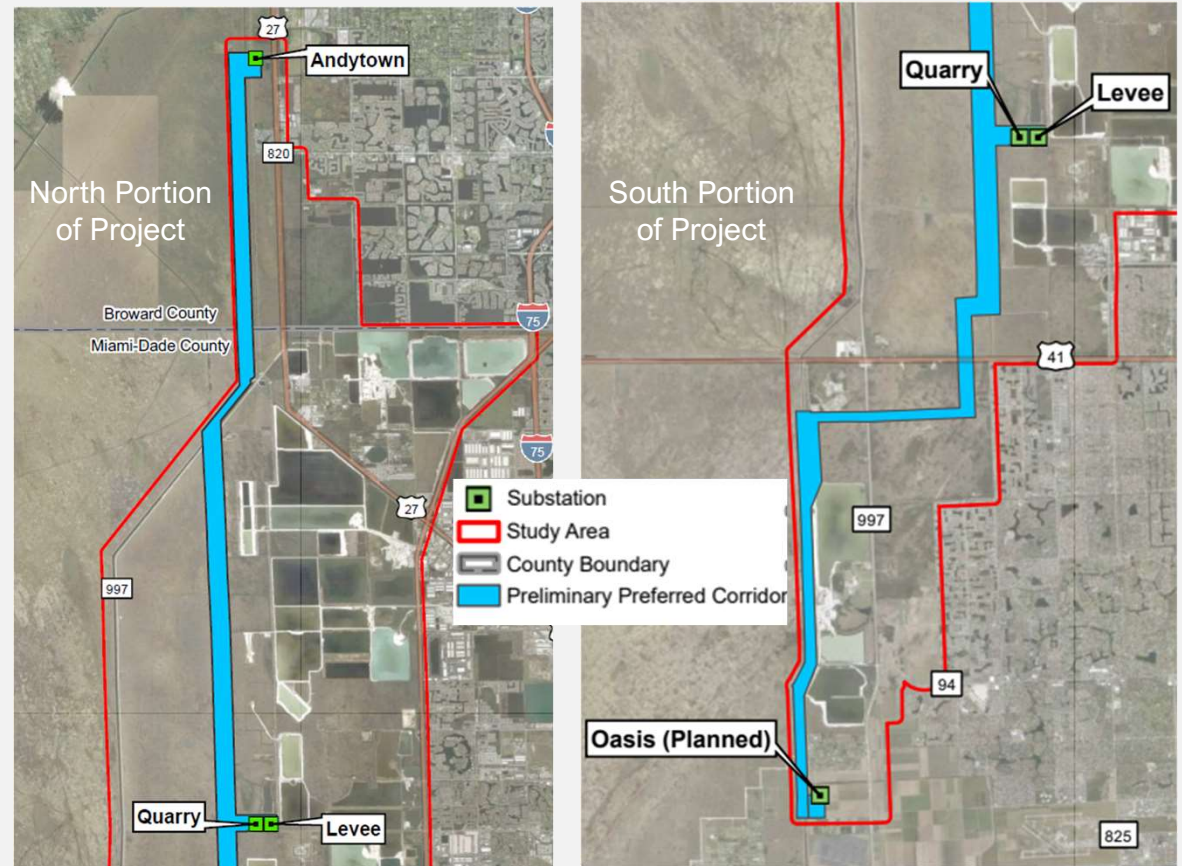
Project overview

- **FPL is proposing a transmission corridor from the existing Andytown Substation in Broward County to the new Oasis Substation in Miami-Dade County**
 - The corridor will also connect to the existing Quarry and Levee Substations
- **AOP meets the projected load growth in Miami-Dade County**
 - Reliability improvements required by 2033 to add capacity and increase power transfer
- **Project includes four new transmission lines:**
 - One 500 kV line from Andytown to Oasis (~30 miles)
 - One 500 kV line from Oasis to Quarry (~15 miles)
 - One 230 kV line from Oasis to Quarry (~15 miles)
 - One 230 kV line from Oasis to Levee (~15 miles)
- **FPL is seeking certification via the state's Transmission Line Siting Act**

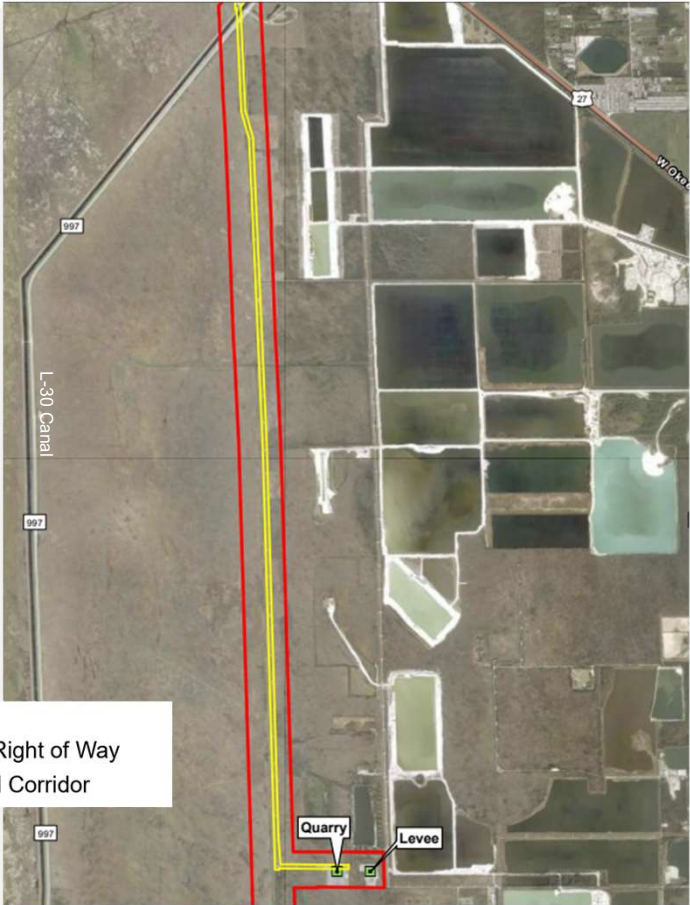


Preliminary preferred corridor

- A study area was identified within which various corridors were analyzed
- The analysis considered: environmental features, linear facilities, schools, current FPL owned rights of way, buildings, etc.
- The results of the analysis identified a preliminary preferred corridor
- The northern portion of the preliminary preferred corridor collocates with Levee-Midway 500kV line
- The southern portion of the preliminary preferred corridor utilizes a part of the previously certified West Consensus Corridor, which was a significant factor in the analysis



Northern portion of AOP



- Substation
- Existing FPL 500kV Right of Way
- Preliminary Preferred Corridor

History of the West Consensus Corridor (WCC)

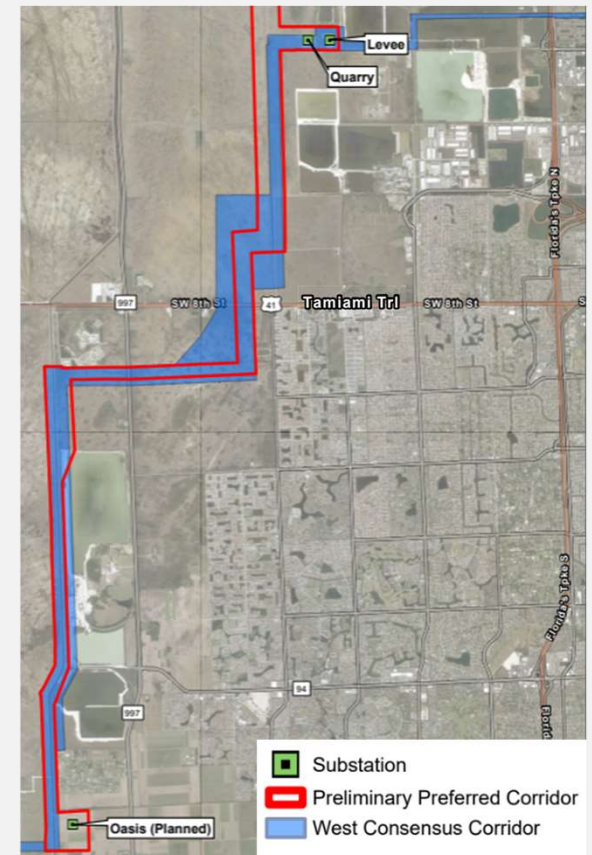
- A significant portion of the corridor identified as our preliminary preferred corridor utilizes the land approved as the WCC for the Turkey Point 6&7 certification
- 1960s-1970s: FPL acquired a linear strip of land for future use
- 1989: Everglades National Park (ENP) boundary was expanded to the east, encompassing FPL's property interests
- Mid-2000's: FPL began negotiations with the Department of the Interior (DOI), SFWMD, USACE, and TIITF for an exchange of lands
 - FPL would give its land to ENP and receive a strip of land on the new eastern edge of ENP
- 2009: FPL filed for the Turkey Point Units 6&7 Power Plant Siting Act certification
 - Filing included the development of two new nuclear generators at Turkey Point, along with associated transmission lines
 - Western corridors proposed for certification included FPL's exchanged lands



History continued

- **2014: After significant negotiations over a number of proposed corridors, the initial Final Order approving the project certified the WCC**
 - Siting Board found that the WCC had the “fewest adverse impacts relative to air and water quality, fish and wildlife, water resources, and other natural resources of the state” of all proposed corridors
 - Parties who ultimately provided support for the WCC included FDEP, SFWMD, MDC, FWC, ENGOs (NPCA), mining companies and developers
- **2016: ENP and FPL finalized the land exchange**
 - ENP boundaries remain in place until final ROW identified
 - FPL must prioritize siting transmission lines east of ENP in the WCC
 - Where FPL can remain east of the existing ENP boundary, FPL exchange lands will be reconveyed to ENP
- **2020: After several appeals, the order became final**

The Preliminary Preferred Corridor portion that is located between Oasis and Levee/Quarry is materially the same as the previously approved WCC



Project Schedule

- **Public outreach to obtain feedback on the preliminary preferred corridor has been initiated**
 - Open houses in Broward and Miami-Dade are anticipated in March 2026
- **TLSA application to be filed April 2026**
 - Need determination to be filed concurrently
- **Design and permitting to occur 2026-2028**
- **Projected construction start in 2029**

FPL looks forward to working with you during the TLSA process

Appendix

Typical Structures

