



SFRTA/TRI-RAIL UPDATE

DAVID DECH, EXECUTIVE DIRECTOR

Presented For
South Florida & Treasure Coast Regional Planning Councils



South Florida Regional Transportation Authority

- FDOT purchased the South Florida Rail Corridor from CSX in 1988 and started Tri-Rail service in 1989
- THE SOUTH FLORIDA REGIONAL TRANSPORTATION AUTHORITY IS AN AGENCY OF THE STATE OF FLORIDA CREATED IN 2003
- SFRTA operates Tri-Rail commuter rail service with funding provided by state, county and federal sources
- SFRTA provides track, signal and crossing maintenance on the 73.5-mile SFRC and 8 miles of freight service spur tracks
- SFRTA dispatches Tri-Rail, Amtrak and CSX freight trains that operate on the SFRC



SFRTA OPERATIONS CENTER
POMPANO BEACH, FL

Tri-Rail

- Commuter rail service since 1989
- 19 stations
- 54 Weekday trains and 30 Weekend trains
 - 24 MiamiCentral Weekday shuttle trains
 - 23 MiamiCentral Weekend shuttle trains
- 20 and 30 minute service during Weekday peak hours
- Hourly service on Weekends, Holidays and Weekday off-peak hours
- Connections to South Florida's 3 international airports



MiamiCentral



Hardware + Software Upgrades



Train Testing



Overtown CRA Outreach



Grand Opening Event

South Florida Rail Corridor



83

instances of graffiti removed



247

tons of trash and debris removed



1,100

linear feet of fencing installed



776

linear feet of fencing repaired



20

homeless camps cleared



269,680

linear feet of vegetation cleared

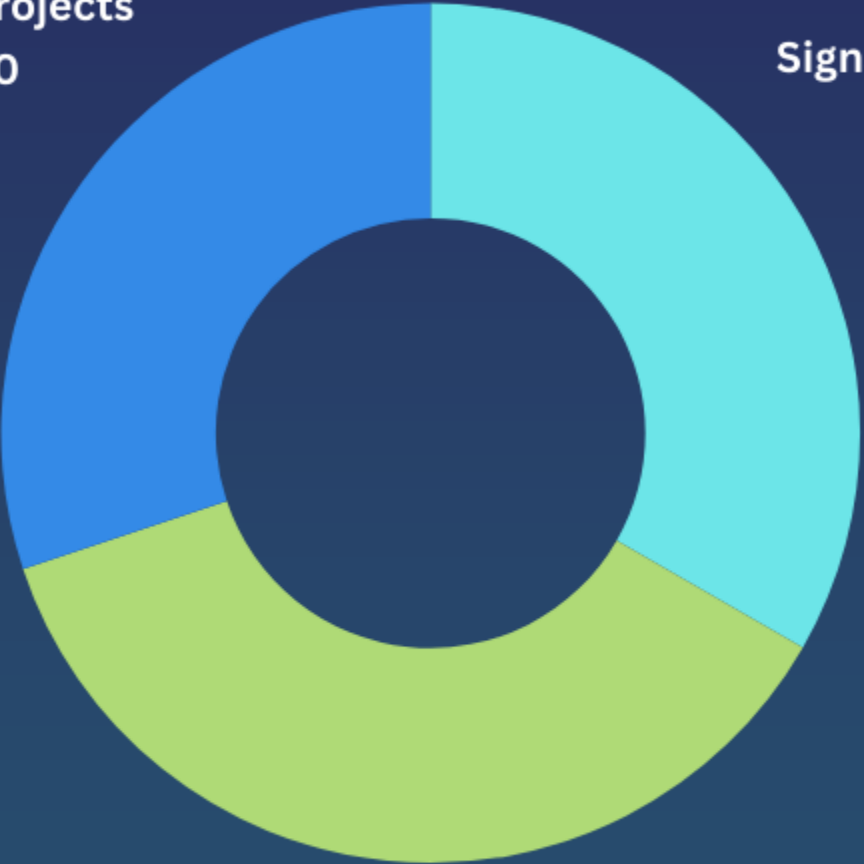
South Florida Rail Corridor

12

Crossing Rehab Projects
\$5,695,454.0

15

Signal Upgrade Projects
\$6,300,338.0



OSSI Upgrade Projects
\$6,916,674.0

11



Stations

PEDESTRIAN BRIDGE
REHABILITATION



STATION CONDITION
ASSESSMENTS



SECURITY CAMERAS



PASSENGER INFORMATION
SYSTEM



Equipment



Service

EXPRESS TRAIN SERVICE
GET TO DOWNTOWN MIAMI FASTER



NO TRANSFERS • FEWER STOPS
Tri-Rail now offers Express train service to and from Downtown Miami. One morning train from West Palm Beach and a northbound evening train gets you to work, school or home faster. And fares are still as low as \$2.50 one way.



TRI RAIL
TRI-RAIL.COM | 1-800-TRI-RAIL
* Effective date, Monday, July 1, 2024



+53 TRAINS
PER WEEK



Ridership

15,000

Weekday Passengers
First time since 2020

10,129

New Saturday Ridership Record
Rail Fun Day

7,797

New Sunday Ridership Record
Calle Ocho



LEAVE THE DRIVING TO TRI-RAIL WITH CONVENIENT TRAIN SERVICE FROM 19 STATIONS FROM MIAMI TO WEST PALM BEACH INCLUDING HOLLYWOOD, BOCA RATON, DELRAY, LAKE WORTH AND NOW MIAMICENTRAL STATION IN DOWNTOWN MIAMI!



Safety



System Safety Plan (49 CFR 270)

Passenger Train Emergency Preparedness Plan (49 CFR 239)

Railroad Operating Rules (49 CFR 217)

Fatigue Mitigation Plan

Fatigue Risk Management Plan

In the last 6 months

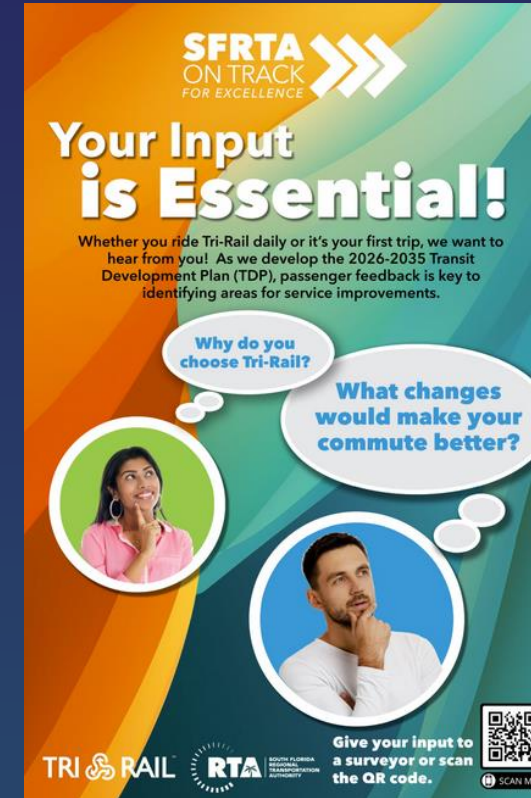
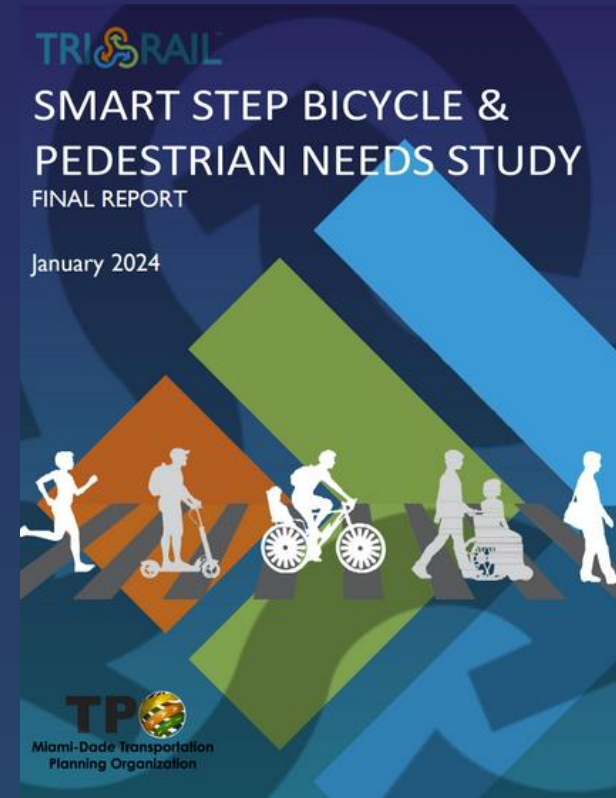
15,656 warnings

1,105 citations

6 fare evasion arrests



Studies + Plans



Transit Oriented Development

- **The Colony at Boca Raton Station**
 - 340 residences (34 affordable/17 workforce)
 - 30,000+ square feet of retail
 - 50% discount on Tri-Rail/Palm Tran fares
- SFRTA owned parcel being developed by 13th Floor Investments
- Recipient the first residential transit-oriented development loan under the U.S. Department of Transportation's lending programs (RRIF Loan)
- Site Plan received unanimous approval from Boca Raton City Council on January 14th, 2025



Future Plans

Capacity Upgrades & Corridor Improvements

- Northern Layover Facility (PB TPA Funded)
- New Rolling Stock
- Corridor & Signal Upgrades

Service Expansion

- Veterans Affairs Medical Center (VA) Extension

Regional Coordination

- Partnering with FDOT, Palm Tran, BCT, DTPW, FECR, CSX, Amtrak, and Brightline

Transit Oriented Development (TOD)

- Boca Raton & WPB Stations

Northern Layover Facility



FEC Commuter Rail Expansion



Veterans Affairs Extension



Transit Village





SFRTA/TRI-RAIL UPDATE

DAVID DECH, EXECUTIVE DIRECTOR

Presented For
South Florida & Treasure Coast Regional Planning Councils

