



**DRAFT AGENDA**

**MONDAY, JUNE 16, 2025**

**SOUTH FLORIDA REGIONAL PLANNING COUNCIL**

**1 Oakwood Boulevard, Suite 250**

**Hollywood, FL 33020**

**954-924-3653**

**VIRTUAL / PHYSICAL MEETING**

Join Zoom Meeting

<https://us06web.zoom.us/j/81483270679?pwd=igr7qW6Nr461cHTyNHpGvCKavaPU3B.1>

Meeting ID: 814 8327 0679

Passcode: 406792

Find your local number: <https://us06web.zoom.us/j/81483270679?pwd=igr7qW6Nr461cHTyNHpGvCKavaPU3B.1>

I. Pledge of Allegiance and Roll Call

II. Presentation (Approximately 11:00 a.m.)

FY 22-23 Audit Presentation **(Time Approximate: 11:00 AM)**

Tanya I. Davis, CPA, Partner, S. Davis & Associates, PA

State Legislative Update

Ronald L. Book, Founder, President & CEO, Ronald L. Book, P.A. **(Time Approximate: 11:25 AM)**

III. Action Items

A. Minutes of the Previous Meeting

B. Financial Report

C. Consent: Comprehensive Plan Amendment Reviews



South Florida Regional Planning Council  
1 Oakwood Boulevard, Suite 250, Hollywood, Florida 33020  
954-924-3653 Phone, 954-924-3654 FAX  
[www.sfregionalcouncil.org](http://www.sfregionalcouncil.org); [sfadmin@sfrpc.com](mailto:sfadmin@sfrpc.com)

Property Rights Amendment \*

Proposed

- Town of Hillsboro Beach 25-01ER \*
- City of Parkland 25-01ESR
- City of Tamarac 25-01ER
- City of Weston 25-01ER \*

**Public Hearing**

Adopted

- Islamorada, Village of Islands 25-01ACSC
- Village of Palmetto Bay 25-01ER

**Public Hearing**

- D. Regional Issues: Comprehensive Plan Amendment Review – None
- E. Audit Report **(Time Approximate: 11:00 AM)**

**Public Comments**

**IV. Program Reports and Activities**

- A. SFRPC Revolving Loan Funds Status Report
- B. SFRPC CARES Act RLF Status Report

**V. Discussion Items**

- A. Executive Director's Report
- B. Legal Counsel Report
- C. Council Members Report
- D. Ex-Officio Report

**VI. Announcements and Attachments**

- A. Attendance Form
- B. Upcoming Meetings
  - 1) Monday, July 21, 2025, 10:30 a.m. (SFRPC)
  - 2) August, Summer Recess
  - 3) Thursday, September 11, 2025, (SFRPC Regional Conference, TBD)

**VII. Adjournment**

Pursuant to Chapter 286.0105, Florida Statutes, if a person decides to appeal any decision made by the Council with respect to any matter considered at such meeting or hearing, he may need to ensure that a verbatim record of the proceedings is made which record includes the testimony and evidence upon which the appeal is based.

Pursuant to the provisions of the Americans with Disabilities Act, any person requiring special accommodations to participate in this hearing is asked to advise the Agency at least 5 days before the hearing by contacting the South Florida Regional Planning Council at one of the following: (1) One Oakwood Boulevard, Suite 250, Hollywood, Florida 33020; (2) Phone 954-924-3653; (3) Fax 954-924-3654; or (4) [sfadmin@sfrpc.com](mailto:sfadmin@sfrpc.com). If you are hearing or speech impaired, please contact the Agency using the Florida Relay Service, 1 (800) 955-8771 (TTY/VCO), 1 (800) 955-8770 (Voice), 1 (800) 955-8773 (Spanish).

Agenda packets for upcoming Council meetings will be available at the Council's website, <https://sfrgionalcouncil.org/meeting-materials/> ten days prior to the meeting.

If you would like to be added to the e-mail list to receive the link to the agenda, please e-mail the Council at [sfadmin@sfrpc.com](mailto:sfadmin@sfrpc.com).

Monday, June 16, 2025

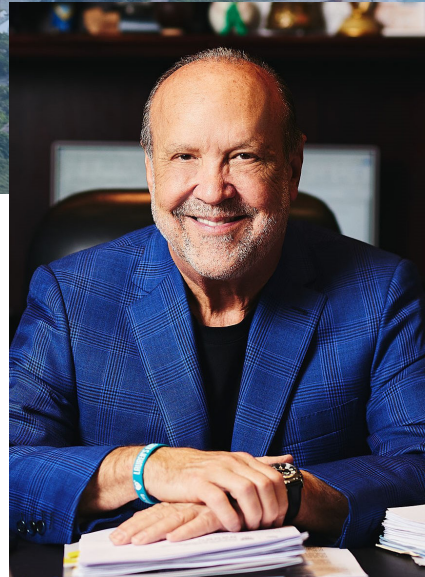
# COUNCIL MEETING GUEST SPEAKERS



**Tanya I. Davis**

---

CPA, Partner, S. Davis &  
Associates, P.A.



**Ronald L. Book**

---

Founder, President & CEO,  
Ronald L. Book, P.A.





## TANYA I. DAVIS

CPA, Partner, S. Davis & Associates, P.A.

Tanya I. Davis, CPA is the assurance partner at S. Davis & Associates, P.A. ("SDA"), a public accounting and consulting firm with four Florida offices. She oversees the assurance and human resources departments and plays a major role in the consulting department and general office oversight. She joined SDA in 1997 after gaining experience with the global accounting firms of PricewaterhouseCoopers and Grant Thornton. During her career, she has worked with clients in a variety of industries, including government, not-for-profit, hospitality, sports and entertainment, wholesale distribution, higher education, insurance, and healthcare.

Tanya has served on various boards and, often, chairs committees related to audit, finance and compliance. In the public accounting field, she was the first African-American female CPA appointed to the Florida Board of Accountancy and served on the board for 7 years. During her tenure, she chaired the Board, itself, and its Probable Cause Panel and Minority Scholarships Committee, and was a member of the National Association of State Boards of Accountancy. As a member of Barry University's President Search Committee, she was instrumental in hiring the first lay person and first male President of the University, helping catapult her to becoming a Vice-Chair of the Board in under five years of serving as a Trustee. As a member of the audit committees of Barry University, the Humane Society of Broward County, Community Foundation of Broward, and the Art & Culture Center of Hollywood, she is relied upon for her audit and accounting acumen and has improved the organizations' policies around audit, tax, and compliance matters, ensuring proper controls are in place.

Tanya is a Cum Laude graduate of Barry University and is licensed to practice as a CPA in Florida. Tanya's husband, Shaun, is a fellow CPA and they have three adult children, one of whom is also a CPA.





## RONALD L. BOOK

Founder, President & CEO, Ronald L. Book, P.A.

Ron Book is the Founder and CEO of Ronald L. Book, P.A., a law firm specializing in government affairs for decades. The firm has consistently been ranked in the top 5 lobbying firms in the state by the news media and those who follow Florida politics.

Ron's start in the political process was in the 1970's, when he began working for the Florida Legislature. Ron later served as Special Counsel and Interim Chief of Staff to Florida Governor Bob Graham and then later as Director of the Administrative and Governmental Law Department for Sparber, Shevin, Shapo, Heilbronner & Book, one of Florida's most influential law firms from 1982 to 1987.

Since opening his own firm 37 years ago, Mr. Book has developed a client list that is a "who's who" of business and industry, hospitals and health care providers, local governments, professional and not-for-profit associations. His reputation as a tireless hard worker, dedicated to his client's causes, has earned him a place in the upper echelon of Tallahassee access. Simply put, if it is an issue that you have read about, Mr. Book has been at the center of the debate, influencing the decisions of policymakers for the past 50+ Regular and Special Legislative Sessions.

Mr. Book is a dedicated volunteer to many charitable causes, however, his two prioritized charitable causes are, the Miami-Dade County Homeless Trust, where he serves as Chairman, and oversees a \$103 million budget and the Lauren's Kids Foundation, where he also serves as Chairman of the Board. Founded by his daughter, Lauren, Lauren's Kids is dedicated to preventing child sexual abuse through education and awareness and helping victims heal.

Mr. Book holds a Juris Doctorate degree from Tulane University and a B.A. in Political Science from Florida International University. Ron spent three years at the University of Florida where he was a letterman as a member of the Fighting Gator track team and is the recipient of numerous awards including two Emmy's and one Gracies Award, the 2023 recipient of the Florida Bar President's Pro Bono Service Award for the Eleventh Judicial Circuit, and in October, 2024 became a Nobel Peace Prize nominee in the area of Peace.



South Florida Regional Planning Council

1 Oakwood Boulevard, Suite 250, Hollywood, Florida 33020

Phone 954-924-3653

Fax 954-924-3654

[sfadmin@sfrpc.com](mailto:sfadmin@sfrpc.com)

[www.sfrgionalcouncil.org](http://www.sfrgionalcouncil.org)

**MINUTES OF THE  
SOUTH FLORIDA REGIONAL PLANNING COUNCIL  
March 17, 2025**

The South Florida Regional Planning Council met virtually and in person on this date at the Miami-Dade Transportation Planning Organization, 150 West Flagler Street, Suite 1900, Miami, FL 33130. Chair Lincoln welcomed everyone, present and virtually, and called the meeting to order at 10:31 a.m. Legal Counsel Sam Goren was asked to lead the Pledge of Allegiance. The recording of this meeting can be found here: <https://www.youtube.com/watch?v=G4hGAorlGZs>

**I. Pledge of Allegiance and Roll Call**

Chair Michelle Lincoln  
Councilmember Frank Caplan  
Councilmember Craig Cates \*  
Councilmember Joseph Corradino \*  
Councilmember Beam Furr  
Councilmember René García (D/VP)  
Councilmember Steve Geller  
Councilmember Oliver Gilbert, III (A)  
Councilmember Cary Goldberg \*  
Councilmember Denise Horland  
Councilmember Samuel Kaufman (VP)  
Councilmember Kionne McGhee (A)  
Councilmember Maria Rodriguez  
Councilmember Michael Udine \*

A = Absent  
D = Designee  
\* = Excused Absence  
VP = Virtually Present

SFRPC Executive Director Isabel Cosio Carballo and Legal Counsel Sam Goren were present.

The following Ex-Officio Member was present:

Dat Huynh, representing the Florida Department of Transportation, District VI

The following Ex-Officio Members were virtually present:

Megan Rutter, representing Sirena Davila, the Florida Department of Environmental Protection  
Armando Vilaboy, representing the South Florida Water Management District

Chair Lincoln recognized the Councilmembers present as members of the Executive Committee to establish a quorum and thanked them for their attendance. She welcomed everyone to Miami-Dade TPO, thanked Director Aileen Bouclé and staff members for their hospitality, and complimented them on their

office.

### **III. Action Items**

#### **A. Minutes of the Previous Meeting**

*Chair Lincoln motioned to approve the Meeting Minutes for the March 17, 2025 Council Meeting. Councilmember Caplan moved the motion, Councilmember Horland seconded the motion, which was adopted by unanimous vote.*

*Chair Lincoln motioned to approve the Meeting Minutes for the April 24, 2025 Executive Committee Meeting. Councilmember Rodriguez moved the motion, Councilmember Caplan seconded the motion, which was adopted by unanimous vote.*

#### **B. Financial Report**

The Director of Finance and IT, Leo Braslavsky Soldi, presented the Financial Report in detail.

*Chair Lincoln motioned to approve the Financial Report. Councilmember Furr moved the motion, Councilmember Caplan seconded the motion, which was adopted by unanimous vote.*

#### **C. Consent: Comprehensive Plan Amendment Reviews**

Legal Counsel, Sam Goren, read the Comprehensive Plan Amendment Reviews Proposed.

Proposed:

- Miami-Dade County 25-02ESR
- Monroe County 25-02ACSC
- Monroe County 25-03ACSC
- City of Hollywood 25-01ESR
- City of Hollywood 25-02ESR
- City of Miramar 25-01ER
- City of North Lauderdale 25-01ER

### **Public Hearing**

Chair Lincoln opened the Public Hearing and asked if there were any comments or questions.

Legal Counsel Sam Goren clarified Florida Statutes concerning a Councilmember serving simultaneously as a municipal or county representative and as a Councilmember, including guidance on voting rights and potential conflicts.

### **Public Comments**

There were no comments or questions from the public in person or virtually.

*Chair Lincoln motioned to approve the proposed Comprehensive Plan Amendments. Councilmember Furr moved the motion, Councilmember Caplan seconded the motion, which was adopted by unanimous vote.*

Legal Counsel, Sam Goren, read the Comprehensive Plan Amendment Reviews Adopted.

#### **Adopted**

- Miami-Dade County 24-01ESR
- Miami-Dade County 24-02ESR
- Miami-Dade County 25-01ESR
- Monroe County 25-01ACSC
- Islamorada, Village of Isles 24-04ACSC
- City of Miami Beach 24-01ESR
- City of Miami Beach 25-01ESR
- City of Sweetwater 24-01ESR

### **Public Hearing**

Chair Lincoln opened the Public Hearing and asked if there were any comments or questions.

### **Public Comments**

There were no comments or questions from the public in person or virtually.

*Chair Lincoln motioned to approve the Adopted Comprehensive Plan Amendments. Councilmember Furr moved the motion, Councilmember Rodriguez seconded the motion, which was adopted by unanimous vote.*

#### **D. Regional Issues: Comprehensive Plan Amendment Review**

None

#### **E. SFRPC Revolving Loan Fund Plan 2025 – 2030 / Resolution 25-02**

Mr. Tart, Senior Loan Officer, explained that to remain compliant with the CARES Act Revolving Loan Fund (RLF) requirements, the SFRPC must renew a 5-Year RLF Plan outlining the terms and conditions of the program for the U.S. Economic Development Administration (EDA). He noted that, due to the length of the document, only a summary was included in the Council's packet; the complete Plan is on the website. The Plan has already been reviewed and approved by the EDA. Council staff is asking the Council to adopt Resolution 25-02 to approve the Plan and allow it to be officially submitted to the EDA so the program can move forward.



Mr. Goren read SFRPC Resolution 25-02 for the record.

### **Public Hearing**

Chair Lincoln opened the Public Hearing and asked if there were any comments or questions.

### **Public Comments**

There were no comments or questions from the public in person or virtually.

*Chair Lincoln motioned to approve the SFRPC Revolving Loan Fund Plan 2025 – 2030 / Resolution 25-02. Councilmember Furr moved the motion, Councilmember Caplan seconded the motion, which was adopted by unanimous vote.*

The Agenda was amended to move forward with Agenda Item IV. Program Reports and Activities.

### **IV. Program Reports and Activities**

- A. SFRPC Revolving Loan Funds Status Report
- B. SFRPC CARES Act RLF Status Report

Jeff Tart, Senior Loan Officer, summarized the following programs.

#### **CARES ACT RLF**

Mr. Tart stated that the Loan Administration was finalizing a \$500,000 CARES Act loan to Renaissance Riviera Beach, LLC for affordable housing in Riviera Beach, Palm Beach County. The project, developed and led by Community Partners of South Florida with financing support from the SFRPC and Florida Housing Finance Corporation, will build 5 new single-family homes for first-time minority homebuyers. This is a collaboration with the Riviera Beach CRA to develop 15 units over three years. Updates on the project's start and groundbreaking will be provided.

The CARES Act RLF is reviewing and underwriting a new \$250,000 loan to White Glove Linen, an existing minority owned business, seeking financing to expand operations to acquire new commercial laundry equipment to meet the growing demands of local hotels and resorts. To date, the CARES Act RLF administration has approved 36 loans totaling \$7.86 MM and saved and/or created more than 351 jobs. The program has approximately \$490,000 available to lend.

#### **Traditional RLF**

The traditional RLF is underwriting a \$500,000 loan request for Paramount Broadcasting Communications/Findal Media & Technology, an existing minority-owned business, to renovate a commercial studio in Sunrise to expand their media services to the Haitian community in South Florida. The traditional RLF program has provided \$5.66 million in loans to 29 businesses and has approximately \$700,000 available to lend.

### **EPA Brownfields Clean Up Projects**

The EPA awarded the SFRPC \$2 million in supplemental funding to support the cleanup of the former Hollywood Ash Incinerator site in Hollywood, Broward County. Additionally, a new \$1.2 million assessment grant was awarded to assist environmental efforts in the City of Miami, the Allapattah Collaborative, and the South Florida Community Land Trust, which is supported by local organizations and officials (Commissioners Keon Hardemon and Raquel Regalado's Districts). Project updates in Miami-Dade County include the Miami Health District, where \$1.75 million in EPA funding is being used to transform a site at the Miami River and NW 27th Avenue, formerly an exterminator warehouse and marina storage, into affordable housing. Claude Pepper Park, where \$3.5 million in EPA funding is supporting the cleanup and redevelopment of the site at 1255 NW 145th Street into affordable housing and commercial spaces (Commissioner Marlene Bastien's District).

### **Southeast Florida Community Development Fund/Affordable Housing Initiative**

The Southeast Florida Community Development Fund (SFCDFI) is currently underwriting a 12-unit affordable townhome project at 6701 SW 25th Street in Miramar, targeting workforce housing for households at 120% or less of the area median income. Each unit will be approximately 1,600 sq. ft. and priced around \$385,000. Two of four single-family affordable homes have been completed in the City of West Park for first-time minority homebuyers, in partnership with the Housing Foundation of America and the Liberia Economic and Social Development organization. These homes are 1,800 sq. ft., 3-bed/2-bath, and offered at \$350,000. The remaining two homes are 85% complete. These projects have been made possible through collaboration with the Broward County Housing Finance Authority. To date, 33 homes have been completed or are in progress as part of SFCDFI's broader affordable housing initiative across South Florida. BankUnited recently awarded a \$10,000 grant to support this initiative.

Councilmember Furr commended Mr. Tart for finalizing funding for the Hollywood Ash Incinerator site.

Mr. Tart explained in detail what a site assessment entails. Since an assessment is quite expensive, home/land owners try to receive grant funding from the EPA. In this funding cycle, the Council received two of five awards in the state.

Councilmember Geller questioned the pass-through funding and the expenses to the SFRPC. Mrs. Cosio Carballo explained that a fiscal analysis is being conducted on the SFRPC Programs. Mr. Tart explained that the SFRPC includes an administrative fee/expense to oversee and manage these programs, which are included in the \$1.2 million grant and all the RLF Programs. Councilmember Rodriguez inquired about the promotion of the RLF Program. Mr. Tart stated that Councilmembers assist in promoting the program to their constituents, along with the Council's marketing partners across counties, municipalities, CRAs, and economic development professionals, through staff outreach efforts and our website. Chair Lincoln noted that the Monroe County staff utilizes this information quite frequently.

Chair Lincoln welcomed those attending via Zoom: Monroe County Mayor Jim Scholl, Jim Murley (retired but diligently working to make our community wonderful), and SFWMD representative Amando Vilaboy.

C. SFRPC Regional Conference

Mrs. Cosio Carballo reminded the Councilmembers that the SFRPC has a Joint Council Meeting with the Treasure Coast Regional Planning Council (TCRPC) and a separate SFRPC Regional Conference once a year. This year's Regional Conference is on September 11<sup>th</sup>, at a venue to be determined. At the upcoming SFRPC Regional Conference, Palm Beach County / TCRPC is invited to the conversation "Business for Transit-Oriented Development (TOD) and Affordable Housing in South Florida" as a county that is actively promoting TOD / Affordable Housing. Immediate-Past Chair Geller, in his role as Chair of the CEDS Committee, has spearheaded an SFRPC Study of TOD / Affordable Housing, in partnership with public and private sector partners, which will be presented at the Conference. Past Chair Geller commended Mr. Deshazo, Ms. Agolli, Ms. Miskis, and staff for their work. He stated that TOD could be the most economical solution to the housing issues. Mrs. Cosio Carballo stated that she will keep the Councilmembers updated, and if anyone has any suggestions to please contact her.

D. Council Newsletter

**II. Presentations (Approximately 11:00 a.m.)**

Presentations can be found on the Council website: <https://sfregionalcouncil.org/meeting-materials/>

A. Jane Gilbert, Chief Heat Officer & Miami-Dade County Director of Urban and Community Forestry, "Addressing the Health and Economic Impacts of Extreme Heat"

Ms. Gilbert highlighted that extreme heat is the deadliest weather-related threat in the U.S., and Florida regularly experiences high temperatures and humidity. She noted that vulnerable populations are affected differently, and outreach should be tailored to diverse needs. Her presentation showed rising temperature trends in Florida, projected future impacts, and data on heat-related illnesses/deaths from emergency rooms/hospitals. She shared information about the Heat Vulnerability Index mapping tool, the Climate & Heat Health Task Force, comprised of 15 appointed members from various sectors, and the goals of the Miami-Dade County Extreme Heat Action Plan. Additionally, she explained how urban development, including loss of tree canopy, urban heat waste, and climate change, contributes to rising temperatures.

Chair Lincoln thanked Ms. Gilbert for sharing this important information. Councilmember Geller expressed concern about the impact of state legislation blocking efforts to require employers to provide water and rest breaks for outdoor workers. How do you plan on funding the programs for the future cutbacks? She stated that the Commission is supporting heat protection measures at the federal level and has been advocating for consistent state and federal standards, and the responsibility should not fall solely on local governments. She is advocating that the business side of these protections, like keeping workers and athletes hydrated, allowing breaks, and ensuring safety, can help reduce workers' compensation claims and other liabilities.

- B. Jennifer L. Jurado, Ph.D., Deputy Director and Chief Resilience Officer, Broward County Resilient Environment Department, “Resilience Readiness – “Preparing for Extreme Heat and Flood” (Time Approximate: 11:15 A.M.)

Dr. Jurado praised the accomplishments and information Ms. Gilbert shared. Dr. Jurado’s presentation included details on preparing the community for extreme events during the Heat Season (May 1 - October 1), Hurricane Season (June 1 - November 30), and Wet Season (May 15 - October 15). Her presentation included a slide depicting the increase in intense rainfall events since 2014, a heat index from 2000, hot spots and trends, Addressing Flood and Heat - The Broward Community-wide Resilience Plan, heat-related ER visits, storage, green infrastructure, canal operations, adaptation strategies through 2070, website tools such as “Engagement with Scenario Viewer,” heat coordination efforts, progress made, data collection from various agencies, ongoing needs, and the next steps to expand cooling centers across the county for the summer season.

Councilmember Furr inquired about the hydrologic model that informs FEMA regarding flood zone locations and whether changes to the model affect the flood zones. Dr. Jurado stated that as water management strategies improve, this becomes part of the foundational models. FEMA will adopt and update the model, incorporating the benefits of these improvements into the base model. The flood risk reductions will contribute to improved flood risk assessments and reduced insurance rates, which remain a central focus. This could mean that certain areas may no longer fall within flood zones due to water management enhancements. A key aspect of the resilience plan is determining how to finance and justify these efforts. Improving the culverts is indeed a promising idea, but addressing the major canal issues is essential to ensure proper drainage. Funding for these improvements also poses a challenge. There was a discussion regarding the Central and Southern Florida Study (CS & F) and potential focal points such as salinity control, barriers, and pumps; however, the study has not considered updating seawalls or raising the banks of the canals. Chair Lincoln thanked Dr. Jurado for her presentation and valued the information shared.

- C. Aileen Bouclé, AICP, Director, Miami-Dade Transportation Planning Organization, “Planning for the Future – Miami-Dade TPO Long Range Transportation Plan” (Time Approximate: 11:35 A.M.)

Chair Lincoln thanked Ms. Bouclé for her hospitality and the view from the TPO’s conference room. She summarized Ms. Bouclé’s professional successes and history.

Ms. Bouclé welcomed attendees and mentioned the value of the partnership between agencies. She expressed the regional importance of the Miami-Dade Transportation Planning Organization (TPO) and its involvement with boards such as the Southeast Florida Transportation Council (SEFTC). She presented a transportation timeline illustrating regional developments since the 1980s, beginning with Metrorail, and outlined the region’s unique challenges and solutions. The handout provided further details, including milestones and projected improvements through 2050. Ms. Bouclé discussed the Miami-Dade TPO’s adoption of the federally required Long-Range Transportation Plan (LRTP) 2050, which includes emerging

technologies and infrastructure advancements. She noted that seamless transportation across counties is made possible through collaboration with the Broward MPO, Palm Beach TPA, and the Florida Department of Transportation (FDOT) districts. She addressed federal support for TPO involvement in affordable and workforce housing initiatives, in partnership with SEFTC, and provided an overview of the federal regulations the TPO must follow. She focused on new and emerging transportation technologies, the pros and cons, micromobility infrastructure (e.g., bicycles, e-bikes), First/Last mile connectivity, urban and next-generation air mobility, autonomous transit, and interoperability with mobile devices, etc. She highlighted regional and megaregional projects, including: Brightline, Golden Glades Interchange improvements, South Dade Transit Way (22-mile gold-standard BRT), Tri-Rail expansion, and the TPO's Transit-Oriented Communities Initiative. She concluded by noting that the SMART Plan has transitioned to the SMART Program, now in phases of design, construction, operations, and maintenance. Locally, the program is referred to as the "SMART Region," as four of the six corridors extend across regional boundaries. Ms. Bouclé stated she could continue all day on the subject of transportation.

Chair Lincoln thanked Ms. Bouclé for her informative presentation and her expertise in transportation. She commented on the growing pains experienced by Monroe County and emphasized the need for greater efficiency. Chair Lincoln noted her role on the Florida Transportation Strategic Plan 2055 and shared her enthusiasm about the rapid advancement of next-generation technologies, including air mobility and autonomous vehicles. She expressed excitement about the opportunity to reimagine transportation over the next 20 to 30 years.

It was mentioned that Ms. Bouclé organized the Netherlands trip for the Palm Beach, Broward, and Miami-Dade counties to see how urban areas prioritize walking and bicycling over vehicle use within a 2–3-mile radius. She was recognized as a key leader in advancing regional transit interoperability across the three counties. Ms. Bouclé explained that the field review was conducted by the Dutch Cycling Embassy, an internationally recognized leader in bicycle and pedestrian infrastructure. Dutch engineers have successfully created integrated, safe systems allowing people to rely on bicycles and walking for short trips, reducing the need for personal vehicles. Local transit stations are also designed to support those who can no longer drive. She would like to bring this model back to Florida. Discussion ensued on the coordination of mass transit in urban areas, including timing and reliability of service, enhanced bus shelters, protected pedestrian and bicycle networks, Transit-Oriented Developments (TODs), and flexible services like Metro Connect.

Chair Lincoln thanked Ms. Bouclé for sharing her energy and her commitment to transportation.

## **Public Comments**

There were no comments or questions from the public in person or virtually.

## **V. Discussion Items**

### **A. Executive Director's Report**

Noted earlier in the agenda.



B. Legal Counsel Report

Mr. Goren stated that there is a document included in the Traditional RLF packet updating the Dawson case. He will brief the Council as this progresses. There is no new litigation to report or any other matter that will impact the Council.

C. Council Members Report

None

D. Ex-Officio Report

Chair Lincoln thanked Mr. Huynh for attending the meeting in person. He did not have an update and hopes to attend future meetings in Hollywood. He welcomed everyone to Miami-Dade County.

Armando Vilaboy, SFWMD, announced that they have stopped the seasonal drawdown in the south and are moving those canals to the high ranges in the Miami-Dade area for those who follow the water operations.

Chair Lincoln acknowledged and thanked Councilmember Albritton for attending most of the SFRPC meetings.

**VI. Announcements and Attachments**

A. Attendance Form

B. Upcoming Meetings

- 1) Thursday, April 24, 2025, 10:30 a.m. (SFRPC)
- 2) Monday, May 19, 2025, 10:30 a.m. (Miami-Dade TPO)
- 3) Monday, June 16, 2025, 10:30 a.m. (SFRPC)

**VII. Adjournment**

Chair Lincoln adjourned the meeting at 12:24 p.m.

This signature is to attest that the undersigned is the Secretary of the SOUTH FLORIDA REGIONAL PLANNING COUNCIL and that the information provided herein is the true and correct minutes for May 19, 2025, of the SOUTH FLORIDA REGIONAL PLANNING COUNCIL adopted on the 16<sup>th</sup> day of June 2025.

---

Frank Caplan, Secretary  
Councilmember, Village of Key Biscayne

---

Date



## MEMORANDUM

AGENDA ITEM #III.B

---

DATE: JUNE 16, 2025

TO: COUNCIL MEMBERS

FROM: STAFF

SUBJECT: FINANCIAL REPORT

---

Attached is a Financial Report comparing the months of March through May 2025 for your review and approval.

Recommendation

Approve the Financial Report.



South Florida Regional Planning Council  
1 Oakwood Boulevard, Suite 250, Hollywood, Florida 33020  
954.924-3653 Phone, 954.924-3654 FAX  
[www.sfregionalcouncil.org](http://www.sfregionalcouncil.org)

**SOUTH FLORIDA REGIONAL PLANNING COUNCIL  
COMPARATIVE BALANCE SHEET**

**May 31, 2025**

(unaudited)

	March	April	May	Increase (Decrease)
<b><u>General Fund</u></b>				
<b>Assets:</b>				
Cash GF	1,561,394	1,494,176	1,354,636	(139,541)
SBA - Investment Account	518,108	520,018	521,997	1,979
Accounts Receivable	11,027	9,855	8,682	(1,173)
Due From Other Funds	33,540	33,660	51,083	17,424
Prepaid Expenses	15,477	15,477	15,477	-
<b>Total Assets</b>	<b>2,139,546</b>	<b>2,073,185</b>	<b>1,951,875</b>	<b>(121,310)</b>
<b>Liabilities and Fund Balance:</b>				
Liabilities	28,448	19,575	22,304	2,729
Fund Balance	2,111,098	2,053,610	1,929,571	(124,039)
<b>Total Liabilities and Fund Balance</b>	<b>2,139,546</b>	<b>2,073,185</b>	<b>1,951,875</b>	<b>(121,310)</b>
<b><u>Federal, State &amp; Local</u></b>				
<b>Assets:</b>				
Accounts Receivable	130,313	92,114	227,035	134,921
<b>Total Assets</b>	<b>130,313</b>	<b>92,114</b>	<b>227,035</b>	<b>134,921</b>
<b>Liabilities and Fund Balance:</b>				
Liabilities	(1,196)	(1,799)	(1,047)	752
Fund Balance	131,509	93,913	228,081	134,169
<b>Total Liabilities and Fund Balance</b>	<b>130,313</b>	<b>92,114</b>	<b>227,035</b>	<b>134,921</b>
<b><u>Revolving Loan Funds</u></b>				
<b>Assets:</b>				
Cash RLF	2,778,058	3,078,082	3,129,368	51,286
Accounts Receivable	10,220,461	9,926,966	9,880,532	(46,434)
Allowance for Loan Losses	(1,262,624)	(1,262,624)	(1,262,624)	-
<b>Total Assets</b>	<b>11,735,895</b>	<b>11,742,424</b>	<b>11,747,276</b>	<b>4,852</b>
<b>Liabilities and Fund Balance:</b>				
Liabilities	78	1,988	(182)	(2,170)
Due To Other Funds	33,540	33,660	51,083	17,424
Fund Balance	11,702,277	11,706,777	11,696,375	(10,402)
<b>Total Liabilities and Fund Balance</b>	<b>11,735,895</b>	<b>11,742,424</b>	<b>11,747,276</b>	<b>4,852</b>
<b><u>Southeast Florida Regional Prosperity Institute</u></b>				
<b>Assets:</b>				
Cash	56,140	56,232	58,866	2,634
Receivables	-	-	-	-
<b>Total Assets</b>	<b>56,140</b>	<b>56,232</b>	<b>58,866</b>	<b>2,634</b>
<b>Liabilities and Fund Balance:</b>				
Liabilities	64	3	3	-
Fund Balance	56,076	56,229	58,863	2,634
<b>Total Liabilities and Fund Balance</b>	<b>56,140</b>	<b>56,232</b>	<b>58,866</b>	<b>2,634</b>

**SOUTH FLORIDA REGIONAL PLANNING COUNCIL**

**May 31, 2025**

**(unaudited)**

<b><u>Description</u></b>	<b>March</b>	<b>April</b>	<b>May</b>	<b>Fiscal to Date</b>	<b>% Realized</b>	<b>Annual Budget</b>	<b>% of Budget</b>	<b>Remaining Budget</b>
<b><u>REVENUE REPORT</u></b>								
Membership Dues	\$ -	\$ -	\$ -	\$ 1,226,527	100%	\$ 1,226,527	40%	\$ 1,226,527
Interest & Other Income	6,899	6,547	6,328	55,481	85%	\$ 65,000	2%	9,519
Federal Funded Projects	41,603	90,658	169,021	638,628	77%	\$ 827,324	27%	188,696
State Funded Projects	18,450	-	-	80,516	88%	\$ 91,021	3%	10,505
Local Funded Projects	34,164	11,749	129,263	385,451	109%	\$ 353,350	11%	(32,101)
Trust Funds	37,876	40,552	38,842	434,758	82%	\$ 529,500	17%	94,742
<b>TOTAL Revenues</b>	<b>138,992</b>	<b>149,506</b>	<b>343,453</b>	<b>2,821,361</b>	<b>91%</b>	<b>3,092,722</b>	<b>100%</b>	<b>271,361</b>
<b><u>EXPENSE REPORT</u></b>								
<b><u>Operating Expenses</u></b>								
Staff Compensation	\$ 150,695	\$ 139,292	\$ 203,239	\$ 1,311,296	66%	\$ 1,975,328	64%	\$ 664,032
Occupancy	9,021	9,021	9,021	75,813	64%	118,450	4%	42,637
Utilities Electric/Sanitation	443	483	515	3,874	62%	6,200	0%	2,326
Janitorial Services	802	740	802	6,354	71%	9,000	0%	2,646
Repairs & Maintenance	-	-	-	-	0%	6,200	0%	6,200
Storage	518	518	518	3,840	51%	7,500	0%	3,660
Office Automation	6,365	2,672	3,344	39,058	57%	68,000	2%	28,942
Advertising, Notices, Supplies, Postage & PR	6,853	10,398	3,567	53,688	93%	58,000	2%	4,312
Travel	531	158	859	7,461	75%	10,000	0%	2,539
Professional Development	625	-	994	2,192	14%	16,000	1%	13,808
Insurance	11,525	1,400	-	27,950	62%	45,000	1%	17,050
Miscellaneous Expenses	-	-	-	-	0%	1,000	0%	1,000
Legal Services (1)	6,235	5,283	17,219	44,033	98%	45,000	1%	967
Financial Services	161	177	11,668	12,845	21%	62,500	2%	49,655
Professional Consultants	361	-	-	7,281	49%	15,000	0%	7,719
Capital Expenditures	-	-	-	-	0%	25,000	1%	25,000
Subtotal Operating Expenses	<b>194,136</b>	<b>170,143</b>	<b>251,746</b>	<b>1,595,687</b>	<b>65%</b>	<b>2,468,178</b>	<b>80%</b>	<b>872,491</b>
<b>Pass Through Expenses:</b>	<b>46,029</b>	<b>68,248</b>	<b>47,585</b>	<b>548,547</b>	<b>92%</b>	<b>599,065</b>	<b>19%</b>	<b>50,518</b>
<b>TOTAL Expenses</b>	<b>240,166</b>	<b>238,390</b>	<b>299,331</b>	<b>2,144,234</b>	<b>70%</b>	<b>3,067,243</b>	<b>99%</b>	<b>923,009</b>
<b><u>OTHER REVENUES (Expenses)</u></b>								
Bad Debt- RLF Programs	-	-	-	(25,000)				
<b>Excess (deficit) Revenues over Expenditures</b>	<b>\$ (101,173)</b>	<b>\$ (88,885)</b>	<b>\$ 44,122</b>	<b>\$ 677,127</b>		<b>\$ 25,479</b>	<b>1%</b>	
<b>(1) Additional legal YTD expenses included in "pass-through Expenses"</b>				<b>\$ 72,294</b>				
<b>Note: Percentage of Fiscal Year lapsed</b>				<b>66.67%</b>				



# MEMORANDUM

AGENDA ITEM #III.C

---

DATE: JUNE 16, 2025

TO: COUNCIL MEMBERS

FROM: STAFF

SUBJECT: LOCAL GOVERNMENT COMPREHENSIVE PLAN (LGCP) PROPOSED AND ADOPTED  
AMENDMENT CONSENT AGENDA

---

Pursuant to the 1974 Interlocal Agreement creating the South Florida Regional Planning Council (Council), the Council is directed by its member counties to “assure the orderly, economic, and balanced growth and development of the Region, consistent with the protection of natural resources and environment of the Region and to protect the health, safety, welfare, and quality of life of the residents of the Region.”

In fulfillment of the Interlocal Agreement directive and its duties under State law, the Council reviews local government Comprehensive Plan amendments for consistency with the *Strategic Regional Policy Plan for South Florida (SRPP)*. Pursuant to Section 163.3184, Florida Statutes as presently in effect, Council review of comprehensive plan amendments is limited to 1) adverse effects on regional resources and facilities identified in the SRPP and 2) extra-jurisdictional impacts that would be inconsistent with the comprehensive plan of any affected local government within the Region. The Council’s review of amendments is conducted in two stages: (1) proposed or transmittal and (2) adoption. Council staff reviews the contents of the amendment package once the Department of Economic Opportunity certifies its completeness.

A written report of the Council’s evaluation pursuant to Section 163.3184, Florida Statutes, is to be provided to the local government and the State Land Planning Agency within 30 calendar days of receipt of the amendment.

## Recommendation

Find the proposed and adopted plan amendments from the local governments listed as not causing adverse impact to state or regional resources/facilities and without extra-jurisdictional impacts that would be inconsistent with the comprehensive plan of any affected local government within the Region.

Approve this report for transmittal to the local governments, with a copy to the State Land Planning Agency.





## **PROPOSED AMENDMENTS**

- **City of Hillsboro Beach 25-01ER \***

Proposes Evaluation and Appraisal Report (EAR) based text amendments to the City's Comprehensive Plan. Updates Housing, Recreation & Open Space, Coastal Management, Infrastructure, Intergovernmental Coordination, and creates new Property Rights Elements. Outlines coordination with the Florida Department of Transportation and the Federal Aviation Administration to ensure minimum LOS to airport facilities. Prohibits modular housing and mobile homes in the Coastal High Hazard Area, addresses the Peril of Flood regulations, and requires multi-family units to bury power lines.

- **City of Parkland 25-01ESR**

Amendment to the Future Land Use Element allowing self-storage in commercial areas and revising platting requirements for consistency with Broward County Administrative Rules.

- **City of Tamarac 25-01ER \***

Proposes Evaluation and Appraisal Report (EAR) based text amendments to the City's Comprehensive Plan based on updated data and population projections. Expands lot coverage allowed for commercial development from 40% to 60% and reduces lot coverage allowed for commercial recreation, recreation, and community facilities from 100% to 70% impervious area. Updates Level of Service for parks, potable water, sanitary sewer, solid waste, transportation, and drainage based on new population estimates. Creates a new Property Rights Element.

- **City of Weston 25-01ER \***

Proposes Evaluation and Appraisal Report (EAR) based text amendments to the City's Comprehensive Plan. Creates a new Property Rights Element. Updates LOS for Solid Waste and Parks and Recreation based on the latest population data.

## **ADOPTED AMENDMENTS**

- **Islamorada, Village of Islands 25-01ACSC**

Adopts an amendment to the Village's Future Land Use Map from Residential Medium (RM) to Mixed Use (MU) for a 0.42-acre property, located on Upper Matecumbe Key, at the request of the applicant.

- **Village of Palmetto Bay 25-01ER**

Evaluation and Appraisal Report adding objectives related to the sustainable management of Village energy, water, and land to the Conservation and Sustainability Element, including conservation of environmental resources, septic to sewer conversions, improved energy efficiency standards, and reduced discouraging development in the coastal high-hazard area. Integrates Resiliency Action Plans, Vulnerability Assessments, and Adaptation Action Areas into resiliency and emergency planning. Amends the Future Land Use Element to include townhomes in Low Density Residential areas, small-scale public utilities in all residential zones, limited residential units in commercial zones, and eliminates medium-high density residential. Creates a new Public Participation Element. Addresses comments from Florida Commerce, Florida Department of Environmental Protection, and Miami-Dade County.

\*Property Rights Amendment

**\*\* Staff Note:** Due to the different time requirements for Agencies' responses, some comments may not have been received. Of the Agencies that have submitted comments, those comments do not reflect potential adverse regional or extra-jurisdictional impacts.

No concerns or technical assistance comments reflecting potential adverse regional or extra-jurisdictional impacts were received from local governments or partner agencies.



## MEMORANDUM

AGENDA ITEM #III.E

---

DATE: JUNE 16, 2025

TO: COUNCIL MEMBERS

FROM: STAFF

SUBJECT: FY 2023-24 ANNUAL AUDIT

---

Please find herewith the Audited Financial Statements for the year ended September 30, 2024. Tanya I. Davis, CPA, Partner, S. Davis & Associates, will present the Audit at the Council Meeting.

### Recommendation

Approve the Audited Financial Statements for the year ended September 30, 2024.



South Florida Regional Council  
1 Oakwood Boulevard, Suite 250, Hollywood, Florida 33020  
954.924.3653 Phone, 954.924-3654 FAX  
[www.sfregionalcouncil.org](http://www.sfregionalcouncil.org)

**SOUTH FLORIDA REGIONAL PLANNING COUNCIL**  
**AUDITED FINANCIAL STATEMENTS**  
**FOR THE YEAR ENDED SEPTEMBER 30, 2024**

DRAFT

**SOUTH FLORIDA REGIONAL PLANNING COUNCIL  
AUDITED FINANCIAL STATEMENTS  
FOR THE YEAR ENDED SEPTEMBER 30, 2024**

---

**TABLE OF CONTENTS**

<b>Independent Auditor's Report .....</b>	<b>1</b>
<b>Management's Discussion and Analysis.....</b>	<b>4</b>
<b>BASIC FINANCIAL STATEMENTS</b>	
Balance Sheet/Statement of Net Position.....	10
Statement of Revenues, Expenditures and Changes in Fund Balances/Statement of Activities.....	11
Notes to the Financial Statements .....	12
<b>REQUIRED SUPPLEMENTARY INFORMATION</b>	
Budgetary Comparison Schedule – General Fund .....	32
Budgetary Comparison Schedule – Planning Projects Fund.....	33
Budgetary Comparison Schedule – EDA Revolving Loan Fund.....	34
Budgetary Comparison Schedule – Other Revolving Loan Funds .....	35
Budgetary Comparison Schedule – SFRPI Fund .....	36
Schedule of Employer Contributions – Florida Retirement System Pension Plan .....	37
Schedule of Proportionate Share of the Net Pension Liability – Florida Retirement System Pension Plan .....	38
Schedule of Contributions – Florida Retirement System Health Insurance Subsidy.....	39
Schedule of Proportionate Share of the Net Pension Liability – Florida Retirement System Health Insurance Subsidy .....	40
Notes to Required Supplementary Information.....	41
<b>COMPLIANCE SECTION</b>	
Independent Auditor's Report on Internal Control over Financial Reporting and on Compliance and Other Matters Based on an Audit of Financial Statements Performed in Accordance with <i>Government Auditing Standards</i> .....	42
Independent Auditor's Report on Compliance for Each Major Program and on Internal Control over Compliance Required by the Uniform Guidance .....	44
Schedule of Expenditures of Federal Awards.....	46
Notes to the Schedule of Expenditures of Federal Awards .....	47
Schedule of Findings and Questioned Costs.....	49
Management Letter in Accordance with Rules of the Auditor General of the State of Florida .....	51
Independent Accountant's Report on Compliance with the Requirements of Section 218.415 Florida Statutes .....	53

## **INDEPENDENT AUDITOR'S REPORT**

To the Council Members of the  
South Florida Regional Planning Council

### **Report on the Audit of the Financial Statements**

#### ***Opinions***

We have audited the accompanying financial statements of the governmental activities, the discretely presented component unit and each major fund of the South Florida Regional Planning Council (the "Council") as of and for the year ended September 30, 2024, and the related notes to the financial statements, which collectively comprise the Council's basic financial statements as listed in the table of contents.

In our opinion, the financial statements referred to above present fairly, in all material respects, the respective financial position of the governmental activities and each major fund of the Council, as of September 30, 2024, and the respective changes in financial position for the year then ended in accordance with accounting principles generally accepted in the United States of America.

#### ***Basis for Opinions***

We conducted our audit in accordance with auditing standards generally accepted in the United States of America and the standards applicable to financial audits contained in *Government Auditing Standards*, issued by the Comptroller General of the United States. Our responsibilities under those standards are further described in the Auditor's Responsibilities for the Audit of the Financial Statements section of our report. We are required to be independent of the Council, and to meet our other ethical responsibilities, in accordance with the relevant ethical requirements relating to our audit. We believe that the audit evidence we have obtained is sufficient and appropriate to provide a basis for our audit opinions.

#### ***Responsibilities of Management for the Financial Statements***

Management is responsible for the preparation and fair presentation of the financial statements in accordance with accounting principles generally accepted in the United States of America, and for the design, implementation, and maintenance of internal control relevant to the preparation and fair presentation of financial statements that are free from material misstatement, whether due to fraud or error.

In preparing the financial statements, management is required to evaluate whether there are conditions or events, considered in the aggregate, that raise substantial doubt about the Council's ability to continue as a going concern for twelve months beyond the financial statement date, including any currently known information that may raise substantial doubt shortly thereafter.

#### ***Auditor's Responsibilities for the Audit of the Financial Statements***

Our objectives are to obtain reasonable assurance about whether the financial statements as a whole are free from material misstatement, whether due to fraud or error, and to issue an auditor's report that includes our opinions. Reasonable assurance is a high level of assurance but is not absolute assurance and therefore is not a guarantee that an audit conducted in accordance with



## INDEPENDENT AUDITOR'S REPORT - Continued

generally accepted auditing standards and *Government Auditing Standards* will always detect a material misstatement when it exists. The risk of not detecting a material misstatement resulting from fraud is higher than for one resulting from error, as fraud may involve collusion, forgery, intentional omissions, misrepresentations, or the override of internal control. Misstatements are considered material if there is a substantial likelihood that, individually or in aggregate, they would influence the judgment made by a reasonable user based on the financial statements.

In performing an audit in accordance with generally accepted auditing standards and *Government Auditing Standards*, we:

- Exercise professional judgment and maintain professional skepticism throughout the audit.
- Identify and assess the risks of material misstatement of the financial statements, whether due to fraud or error, and design and perform audit procedures responsive to those risks. Such procedures include examining, on a test basis, evidence regarding the amounts and disclosures in the financial statements.
- Obtain an understanding of internal control relevant to the audit in order to design audit procedures that are appropriate in the circumstances, but not for the purpose of expressing an opinion on the effectiveness of the Council's internal control. Accordingly, no such opinion is expressed.
- Evaluate the appropriateness of accounting policies used and the reasonableness of significant accounting estimates made by management, as well as evaluate the overall presentation of the financial statements.
- Conclude whether, in our judgment, there are conditions or events considered in the aggregate, that raise substantial doubt about the Council's ability to continue as a going concern for a reasonable period of time.

We are required to communicate with those charged with governance regarding, among other matters, the planned scope and timing of the audit, significant audit findings, and certain internal control-related matters that we identified during the audit.

### ***Required Supplementary Information***

Accounting principles generally accepted in the United States of America require that the management's discussion and analysis on pages 4 through 9, budgetary comparison information on pages 32 through 36, and schedules of pension information on pages 37 through 40 be presented to supplement the basic financial statements. Such information is the responsibility of management and, although not a part of the basic financial statements, is required by the Governmental Accounting Standards Board, who considers it to be an essential part of financial reporting for placing the basic financial statements in an appropriate operational, economic, or historical context. We have applied certain limited procedures to the required supplementary information in accordance with auditing standards generally accepted in the United States of America, which consisted of inquiries of management about the methods of preparing the information and comparing the information for consistency with management's responses to our inquiries, the basic financial statements, and other knowledge we obtained during our audit of the basic financial statements. We do not express an opinion or provide any assurance on the information because the limited procedures do not provide us with sufficient evidence to express an opinion or provide any assurance.

## INDEPENDENT AUDITOR'S REPORT - Continued

### ***Supplementary Information***

Our audit was conducted for the purpose of forming opinions on the financial statements that collectively comprise the Council's basic financial statements. The accompanying schedule of expenditures of federal awards, as required by Title 2 U.S. *Code of Federal Regulations* Part 200, *Uniform Administrative Requirements, Cost Principles, and Audit Requirements for Federal Awards*, and Chapter 10.550, Rules of the Auditor General are presented for purposes of additional analysis and are not a required part of the basic financial statements. Such information is the responsibility of management and was derived from and relates directly to the underlying accounting and other records used to prepare the basic financial statements. The information has been subjected to the auditing procedures applied in the audit of the basic financial statements and certain additional procedures, including comparing and reconciling such information directly to the underlying accounting and other records used to prepare the basic financial statements or to the basic financial statements themselves, and other additional procedures in accordance with auditing standards generally accepted in the United States of America. In our opinion, the schedule of expenditures of federal awards is fairly stated, in all material respects, in relation to the basic financial statements as a whole.

### ***Other Reporting Required by Government Auditing Standards***

In accordance with *Government Auditing Standards*, we have also issued our report dated June 16, 2025, on our consideration of the Council's internal control over financial reporting and on our tests of its compliance with certain provisions of laws, regulations, contracts, and grant agreements and other matters. The purpose of that report is solely to describe the scope of our testing of internal control over financial reporting and compliance and the results of that testing, and not to provide an opinion on the effectiveness of the Council's internal control over financial reporting or on compliance. That report is an integral part of an audit performed in accordance with *Government Auditing Standards* in considering the Council's internal control over financial reporting and compliance.

Hollywood, Florida  
June 16, 2025

**SOUTH FLORIDA REGIONAL PLANNING COUNCIL  
MANAGEMENT'S DISCUSSION AND ANALYSIS  
SEPTEMBER 30, 2024**

---

This section of the South Florida Regional Planning Council's (the Council) financial statements presents management's analysis of the Council's financial performance during the year ended September 30, 2024. It is presented to enhance the usefulness of the Council's basic financial statements. Please read this narrative in conjunction with the financial statements, which follow this section.

**Financial Highlights**

- The assets and deferred outflows of the Council as reported in the government-wide financial statements exceeded the liabilities and deferred inflows as of September 30, 2024, by \$12,901,386 (net position). This amount represents an increase of \$1,099,813 as compared to an increase of \$5,611,936 the prior year. This increase was mainly due to the increase in Net HIS Liability of \$1,448,749 and an increase in cash and cash equivalents of \$848,867.
- The General Fund unassigned fund balance as of September 30, 2024, amounts to \$1,446,025 as compared to \$1,348,473 at the end of the previous year. This represents an increase of \$97,552 that was mainly due to the increase in cash and cash equivalents and the increase in contracts and grants receivable.
- As of fiscal year 2021, the South Florida Regional Planning Council (the Council) is partnering with the U.S. Department of Commerce's Economic Development Administration to oversee and administer a new \$5.9 million CARES Act Business Revolving Loan Fund program that is alleviating sudden and severe economic dislocation caused by the coronavirus in Monroe, Miami-Dade, Broward, and Palm Beach counties.
- In 2023, the U.S. Department of Defense Office of Local Defense Community Cooperation awarded the South Florida Regional Planning Council (SFRPC) \$1.1 million to conduct a regional Military Installation Resilience Review (MIRR) of four key military installations. The Council, with its consultant team consisting of the South Florida Defense Alliance and Jacobs, and with the assistance of the counties, adjacent municipalities, and military installations studied "outside the gate" resilience issues facing: Homestead Air Reserve Base (HARB), Miami-Dade County; United States Army Garrison-Miami (USAG-Miami), Miami-Dade County; US Naval Surface War Center South Florida Ocean Measurement Facility (SFOMF), Broward County; and United States Naval Air Station Key West (NASKW), Monroe County.

**Overview of the Financial Statements**

The Council's basic financial statements consist of 1) *government-wide statements*, 2) *fund financial statements*, and 3) *notes to the financial statements*. Required supplementary information is also included in the report.

***Required Basic Financial Statements***

The Council utilizes governmental funds for its financial reporting purposes. As the Council presents financial information using the governmental funds, the Council has elected to present its government-wide statements and fund statements in one set of statements with an adjusting column reconciling the two sets of statements.

**SOUTH FLORIDA REGIONAL PLANNING COUNCIL  
MANAGEMENT'S DISCUSSION AND ANALYSIS  
SEPTEMBER 30, 2024**

---

**Overview of the Financial Statements (cont'd)**

*Required Basic Financial Statements (cont'd)*

The *government-wide financial* statements include the Statement of Net Position and the Statement of Activities, which provide information about the activities of the Council and present a longer-term view of the Council's finances. These two statements report the net position of the Council and changes in them.

You can think of the Council's net position - the difference between assets and deferred outflows minus liabilities and deferred inflows - as one way to measure financial health or financial position. Over time, increases or decreases in net position may serve as a useful indicator of whether the financial position of the Council is improving or deteriorating. However, to assess the overall financial position of the Council, you will need to consider other non-financial factors, such as the condition of the Council's capital assets, the addition or termination of grants and other revenue sources, and the expansion or contraction of programs and services. The Council reports this information using the accounting methods similar to those used by private sector companies. These statements offer short-term and long-term financial information about its activities. The statement of net position includes all the Council's assets and deferred outflows minus liabilities and deferred inflows and provides information about the nature and amounts of investments in resources (assets) and the obligations to Council creditors (liabilities).

All the current year's revenues and expenses are accounted for in the statement of activities. This statement presents information showing how the Council's net position changes during the fiscal year. All changes in net position are reported as soon as the underlying event giving rise to the change occurs, regardless of the timing of related cash flows. Thus, revenues and expenses are reported in the statement for some items that will only result in cash flows in future fiscal periods (for example, uncollected contract and grant revenues, and earned, but unused vacation leave).

Both the *statement of net position* and the *statement of activities* of the government-wide financial statements distinguish functions of the Council that are supported by membership assessments, planning projects (federal, state, and local grants/contracts), and revolving loan portfolios.

The Council's activities include administration functions and long-range regional planning goals, and various revolving loan program service functions. The long-range regional planning goal's function is comprised of a wide array of services including strategic plan development and comprehensive plan review, development of regional impact review and providing technical assistance and expertise in several fields including transportation, economic development, geographic information services, affordable housing, emergency preparedness, land use, and natural resources planning. All activities of the Council are governmental activities.

*Fund Financial Statements*

Fund financial statements tell how the Council's services were financed in the short-term as well as what remains for future spending. The Council utilizes three funds to account for its activities: the general fund, special revenue planning projects fund, and revolving loan funds. The general fund is used to account for all financial resources except those determined to be accounted for in another fund.

**SOUTH FLORIDA REGIONAL PLANNING COUNCIL  
MANAGEMENT'S DISCUSSION AND ANALYSIS  
SEPTEMBER 30, 2024**

---

**Overview of the Financial Statements (cont'd)**

*Fund Financial Statements (cont'd)*

The Special Revenue Fund is used to account for revenues derived from specific sources, which are usually required by law or regulation to be accounted for in separate funds. As of September 30, 2024, the Planning Projects Fund and the Revolving Loan Funds including the EDA Consolidated Fund and the EPA Brownfield revolving loan fund, are special revenue funds. The SFRPI Fund reports the financial activity for the Southeast Florida Regional Prosperity Institute, Inc. ("SFRPI"), a component unit of the Council, and is reported as a fund for financial statement purposes. The fund statements provide a detailed short-term view of the Council's operations and the basic services it provides.

Governmental fund information helps you determine whether there are financial resources that can be spent in the near future to finance the Council's operations. We describe the relationship (or differences) between governmental activities (reported in the Statement of Net Position and Statement of Activities) and governmental funds in a reconciliation as discussed above.

The notes to the financial statements provide additional information that is essential for a full understanding of the information provided in the government-wide and fund financial statements.

**Financial Analysis**

*Government-Wide Analysis*

The government-wide statements report the Council's net position and how they have changed. Table A-1 presents the net position of the Council which measures the Council's financial health, or position. Our analysis and a summary of the Council's statements of net position is presented in Table A-1.

**SOUTH FLORIDA REGIONAL PLANNING COUNCIL  
MANAGEMENT'S DISCUSSION AND ANALYSIS  
SEPTEMBER 30, 2024**

---

**Financial Analysis (cont'd)**

*Government-Wide Analysis (cont'd)*

**Table A-1**

**Condensed Statement of Net Position  
(in thousands of dollars)**

As noted earlier, net position may serve over time as a useful indicator of the Council's financial position. As of September 30, 2024 and 2023, the Council's total assets and deferred outflows exceeded its total liabilities and deferred inflows by \$12,901,386 and \$11,801,574, respectively, an increase of \$1,099,813 from 2023. This increase was mainly due to the increase in Net HIS Liability of \$1,448,749 and an increase in cash and cash equivalents in the planning Projects Fund of \$235,588 mainly related to Federal and State programs.

Unrestricted net position as of September 30, 2024 and 2023 was \$2,084,323 and \$394,927, respectively. The surplus in unrestricted net position is principally attributable to the change in deferred outflows related to pension liabilities as of September 30, 2024.

Restricted net position decreased by \$350,344 or 3.09% to \$10,978,670. This decrease was mainly due to the decrease in fund balance of the RLF Funds from prior years.

**Financial Analysis (cont'd)**

*Government-Wide Analysis (cont'd)*

Table A-2 illustrates the revenues and expenses that caused the change in the Council's total net position.

**SOUTH FLORIDA REGIONAL PLANNING COUNCIL  
MANAGEMENT'S DISCUSSION AND ANALYSIS  
SEPTEMBER 30, 2024**

---

	<b>2024</b>	<b>2023</b>
Current assets, net of loans receivable	\$ 4,552	\$ 3,652
Loans receivable, net	8,840	9,807
Capital assets, net of depreciation	59	78
Right of use Lease assets net of amortization	427	500
Non-current assets	16	16
Total assets	<u>13,894</u>	<u>14,053</u>
Deferred outflows	<u>270</u>	<u>829</u>
Current liabilities	196	235
Non-current liabilities	113	1,324
Lease Liability	427	500
Total liabilities	<u>736</u>	<u>2,058</u>
Deferred inflows	<u>306</u>	<u>1,021</u>
Net position:		
Net investment in capital assets	59	78
Restricted	10,979	11,329
Deficiency in net assets/unrestricted	2,084	395
Total net position	<u>\$ 13,122</u>	<u>\$11,802</u>

**SOUTH FLORIDA REGIONAL PLANNING COUNCIL  
MANAGEMENT'S DISCUSSION AND ANALYSIS  
SEPTEMBER 30, 2024**

---

**Table A-2**

**Condensed Statement of Activities (in thousands of dollars)**

	<b>2024</b>	<b>2023</b>
<b>REVENUES</b>		
Membership assessments	\$ 1,100	\$ 971
Federal, state and local grants	1,749	7,387
Interest	568	505
Other Income	70	134
Total Revenues	<u>3,487</u>	<u>8,997</u>
<b>EXPENDITURES</b>		
Comprehensive planning:		
Personnel services	1,750	1,548
Operating expenses	568	546
Outside consultant expense	1,006	965
Depreciation and amortization	110	93
Bad debt expense	196	239
	<u>3,630</u>	<u>3,391</u>
Add: Net transfers	4	
Change in net position	(139)	5,606
Change in net position - Pension	1,458	-
Prior period adjustment	-	-
Loan Fund, restricted		
Net position, beginning of year	11,802	6,196
Net position, end of year	<u>\$ 13,122</u>	<u>\$ 11,802</u>

In 2024, total revenues of \$3,487,161 decreased by \$5,509,408 as compared to fiscal year 2023 as unearned revenue from the prior year was recognized during the current fiscal year.

Total expenditures of \$3,629,389 for the year ended September 30, 2024, represents an increase of \$240,505 from the prior year, mainly influenced by an increase in outside consultants and personnel services, offsetting the decrease in operating expenses.



**SOUTH FLORIDA REGIONAL PLANNING COUNCIL  
MANAGEMENT'S DISCUSSION AND ANALYSIS  
SEPTEMBER 30, 2024**

---

**Financial Analysis (cont'd)**

*Government-Wide Analysis (cont'd)*

**Capital Assets and Debt Administration**

For the years ended September 30, 2024, and 2023, the Council had \$58,946 and \$77,633 in fixed assets, respectively, net of accumulated depreciation.

The Council has implemented GASB 87 to reflect the right of use lease assets and its related lease liability and has restated the 2023 financial statements to reflect this. The Council does not have any long-term debt related to its capital assets and does not utilize debt as a matter of policy.

*Individual Fund Analysis*

Since the Council only has governmental funds/activities, the explanations provided above for the Statement of Activities regarding changes in net position also substantially explain the change in fund balance as shown on the Statement of Revenues, Expenditures and Changes in Fund Balance.

**General Fund Budgetary Highlights**

The original budgets were approved at the September 2023 Council meeting. There was an approved amendment, thereafter.

**Economic Factors and the Budget**

The Council's grants and contracts are contingent upon its renewal and its ability to obtain new grants and, therefore, its revenues may vary from year to year. In setting its budget for fiscal year 2024, various factors, such as delivering at least the same level of expertise by increasing capacity, and adding new programs and grants were considered.

**Requests for Information**

This financial report is designed to provide a general overview of the Council's finances for all those with interest in its financial position. Questions concerning any of the information provided in this report or requests for additional information should be addressed to the Executive Director, South Florida Regional Planning Council, 1 Oakwood Boulevard, Suite 250, Hollywood, Florida.

**SOUTH FLORIDA REGIONAL PLANNING COUNCIL  
BALANCE SHEET/STATEMENT OF NET POSITION  
FOR THE YEAR ENDED SEPTEMBER 30, 2024**

	Major Funds								
	General Fund	Planning Projects Fund	Revolving Loan Funds		SFRPI Fund	Total Funds	Adjustments	Statement of Net Position	
			EDA	Other					
<b>ASSETS</b>									
Cash and cash equivalents	\$ 1,454,630	\$ -	\$ -	\$ -	\$ 53,888	\$ 1,508,518	\$ -	\$ 1,508,518	
Investments	12,513	-	-	-	-	12,513	-	12,513	
<b>Receivables</b>									
Contract and grant receivables	77,798	58,805	-	-	-	136,603	-	136,603	
Deposits and other assets	15,477	-	-	-	-	15,477	-	15,477	
Due from other funds	40,237	-	-	-	-	40,237	(40,238)	(1)	
<b>Restricted assets:</b>									
Cash and cash equivalents	-	714,759	1,665,895	513,631	-	2,894,285	-	2,894,285	
Loans receivable, net	-	-	7,392,975	1,446,912	-	8,839,887	-	8,839,887	
Property and equipment, net	-	-	-	-	-	-	58,946	58,946	
Right of use lease assets net	-	-	-	-	-	-	427,293	427,293	
<b>Total Assets</b>	<b>\$ 1,600,655</b>	<b>\$ 773,564</b>	<b>\$ 9,058,870</b>	<b>\$ 1,960,543</b>	<b>\$ 53,888</b>	<b>\$ 13,447,520</b>	<b>\$ 446,001</b>	<b>\$ 13,893,521</b>	
<b>DEFERRED OUTFLOWS OF RESOURCES</b>									
Deferred outflows related to pension							\$ 270,191	\$ 270,191	
<b>8</b>									
<b>Liabilities:</b>									
Accounts payable and other accrued expenses	\$ 71,301	\$ 40,390	\$ 51	\$ 452	\$ -	\$ 112,194	\$ -	\$ 112,194	
Accrued payroll	6,336	-	-	-	-	6,336	-	6,336	
Compensated absences	76,992	-	-	-	-	76,992	-	76,992	
Unearned revenue	-	-	-	-	-	-	-	-	
Due to other funds	-	-	24,245	15,993	-	40,238	(40,238)	-	
Lease liability	-	-	-	-	-	-	427,293	427,293	
Net pension liability	-	-	-	-	-	-	1,045,224	1,045,224	
Net HIS liability	-	-	-	-	-	-	(932,140)	(932,140)	
<b>Total Liabilities</b>	<b>154,629</b>	<b>40,390</b>	<b>24,296</b>	<b>16,445</b>	<b>-</b>	<b>235,760</b>	<b>500,139</b>	<b>735,899</b>	
<b>DEFERRED INFLOWS OF RESOURCES</b>									
Deferred inflows related to pension							\$ 305,874	\$ 305,874	
<b>Fund Balances:</b>									
Restricted for revolving loan program	-	-	9,034,573	1,944,097	-	10,978,670	(10,978,670)	-	
Unassigned	1,446,025	733,174	-	-	53,888	2,233,087	(2,233,087)	-	
<b>Total fund balances</b>	<b>1,446,025</b>	<b>733,174</b>	<b>9,034,573</b>	<b>1,944,097</b>	<b>53,888</b>	<b>13,211,757</b>	<b>(13,211,757)</b>	<b>-</b>	
<b>Total Liabilities and Fund Balances</b>	<b>\$ 1,600,654</b>	<b>\$ 773,564</b>	<b>\$ 9,058,869</b>	<b>\$ 1,960,542</b>	<b>\$ 53,888</b>	<b>\$ 13,447,517</b>			
<b>Net position:</b>									
Net investment in capital assets							58,946	58,946	
Unrestricted							10,978,670	10,978,670	
<b>Total Net Position</b>							<b>2,084,323</b>	<b>2,084,323</b>	
							\$ 13,121,939	\$ 13,121,939	

The accompanying notes are an integral part of these financial statements.

**SOUTH FLORIDA REGIONAL PLANNING COUNCIL**  
**STATEMENT OF REVENUES, EXPENDITURES AND CHANGES IN FUND BALANCES/STATEMENT OF ACTIVITIES**  
**FOR THE YEAR ENDED SEPTEMBER 30, 2024**

	Major Funds					Total Funds	Adjustments	Statement Activities
	General Fund	Planning Projects Fund	Revolving Loan Funds EDA	Other	SFRPI Fund			
<b>REVENUES</b>								
Membership assessments	\$ 1,099,870	\$ -	\$ -	\$ -	\$ -	1,099,870	\$ -	\$ 1,099,870
Federal, state and local projects	263,529	1,111,044	-	373,957	-	1,748,530	-	1,748,530
Interest	84,682	-	408,226	73,026	2,431	568,365	-	568,365
Other Income	5,359	48,000	7,537	-	9,500	70,396	-	70,396
Total Revenues	<u>1,453,440</u>	<u>1,159,044</u>	<u>415,763</u>	<u>446,983</u>	<u>11,931</u>	<u>3,487,161</u>	<u>-</u>	<u>3,487,161</u>
<b>EXPENDITURES</b>								
Comprehensive planning:								
Personnel services	992,985	465,061	226,310	65,602	-	1,749,958	-	1,749,958
Operating expenses	277,147	162,564	109,313	17,101	1,809	567,934	-	567,934
Outside consultant expense	31,616	628,745	573	344,924	-	1,005,858	-	1,005,858
Depreciation and amortization	-	-	-	-	-	-	110,138	110,138
Bad debt expense	-	-	195,501	-	-	195,501	-	195,501
Total Expenditures	<u>1,301,748</u>	<u>1,256,370</u>	<u>531,697</u>	<u>427,627</u>	<u>1,809</u>	<u>3,519,251</u>	<u>110,138</u>	<u>3,629,389</u>
Excess (deficiency) of revenues over expenditures	151,692	(97,326)	(115,934)	19,356	10,122	(32,090)	(110,138)	(142,228)
<b>Other financing sources (uses):</b>								
Operating Transfers in	1,038,062	312,354	148,745	42,816	-	1,541,977	-	1,541,977
Operating Transfers (out)	(1,092,202)	(300)	(336,195)	(109,132)	-	(1,537,829)	-	(1,537,829)
Total other financing sources (uses)	<u>(54,140)</u>	<u>312,054</u>	<u>(187,450)</u>	<u>(66,316)</u>	<u>-</u>	<u>4,148</u>	<u>-</u>	<u>4,148</u>
Excess (deficiency) of revenues and other financing sources over expenditures and other financing uses/change in net position	97,552	214,728	(303,384)	(46,960)	10,122	(27,942)	(110,138)	(138,080)
Add: Pension adjustment, restricted							1,458,445	1,458,445
Fund balance/net position at beginning of year	1,348,473	518,446	9,337,957	1,991,057	43,766	13,239,699	(1,438,125)	11,801,574
Fund balance/net position at end of year	<u>\$ 1,446,025</u>	<u>\$ 733,174</u>	<u>\$ 9,034,573</u>	<u>\$ 1,944,097</u>	<u>\$ 53,888</u>	<u>\$ 13,211,757</u>	<u>\$ (1,548,263)</u>	<u>\$ 13,121,939</u>

The accompanying notes are an integral part of these financial statements.

**SOUTH FLORIDA REGIONAL PLANNING COUNCIL  
NOTES TO THE FINANCIAL STATEMENTS  
SEPTEMBER 30, 2024**

---

**Note 1 - Nature of Operations**

**Reporting entity**

The South Florida Regional Planning Council (the "Council") is a regional governmental planning and coordinating agency formed in September 1969, in accordance with Chapter 186 of the Florida Statutes to provide policy analysis and comprehensive planning services in such areas as housing, emergency management, economic development, water management, transportation and other matters having direct regional impact. The membership of the Council presently consists of Broward, Miami-Dade, and Monroe counties.

The Council maintains separate management control and accountability. The governing board of the Council is composed of elected officials from the member counties, elected officials from city governments in the geographic area covered by the Council, and gubernatorial appointees from the geographic area covered by the Council.

The financial reporting entity for which the accompanying financial statements are prepared includes the Council (primary government) and its component unit, which is an entity for which the Council is financially accountable. The Council is financially accountable for legally separate organizations if its officials appoint a voting majority of an organization's body and either is able to impose its will on that organization or there is a potential for the organization to provide specific financial benefits to, or impose specific burdens on, the Council. The Council may also be financially accountable for organizations that are fiscally dependent on it.

**Component Unit**

The Southeast Florida Regional Prosperity Institute, Inc. ("SFRPI") was formed as a nonprofit Section 501(c)(3) corporation. SFRPI is dedicated to providing educational and implementation opportunities to the economic development field and stakeholder groups concerning access to capital, environmental justice, conflict resolution, visioning as well as community development and redevelopment practices affecting land use, transportation, emergency management, safe and sanitary housing, health and the built environment, and natural resource protection and management.

SFRPI is a component unit of the Council since SFRPI's Board of Directors consists of the current members of the Council, thereby enabling the Council to impose its will upon SFRPI. It qualifies as a blended component unit; therefore, data from SFRPI is combined with data of the Council. SFRPI does not issue stand-alone audited financial statements.

**Note 2 - Summary of Significant Accounting Policies**

These financial statements have been prepared in conformity with reporting guidelines established by GASB and in conformity with accounting principles generally accepted in the United States of America. As a result of adopting GASB Statement No. 34 and GASB 63, the following types of financial statements are reported by the Council:

**SOUTH FLORIDA REGIONAL PLANNING COUNCIL  
NOTES TO THE FINANCIAL STATEMENTS  
SEPTEMBER 30, 2024**

---

**Note 2 - Summary of Significant Accounting Policies (cont'd)**

**Government-wide Statements** – The government-wide financial statements (i.e., statement of net position and statement of activities) report information on all the activities of the Council. Governments typically report activities as either governmental activities, which are normally supported by taxes and intergovernmental revenues, or business-type activities, which rely to a significant extent on fees and charges for support. The Council reports only governmental activities as it has no business-type activities.

The statement of activities demonstrates the degree to which the direct expenses of a given function are offset by program revenues. Direct expenses are those that are clearly identifiable with a specific function. Program revenues include 1) charges to customers or applicants who purchase, use, or directly benefit from goods, services or privileges provided by a given function, and 2) grants and contributions that are restricted to meeting the operational or capital requirements of a function. Taxes and other items not properly included among program revenues are reported instead as general revenues. Since the Council's primary function (mission) is policy analysis and comprehensive planning, all revenues and expenses are for this purpose and the accompanying financial statements do not segregate beyond this function.

The Council has only governmental activities and one function. As such, the government-wide financial statements are presented together with the governmental fund financial statements, with an adjustment column presented to reconcile the two sets of statements.

**Fund Financial Statements** – Separate financial statements are provided for the Council's Governmental Funds, as described below:

**Governmental Fund Type** – used to account for all operations of the Council. The measurement focus of this fund type is based upon determination of changes in financial position or the financial flow measurement focus, rather than upon net income determination. Only current assets and current liabilities are generally included on its balance sheet. The operating statement presents sources (revenues and other financial sources) and uses (expenditures and other financial uses) of available spendable resources during the period. The following comprise the Council's major governmental funds:

- a) **General Fund** – used to account for all financial resources except those required to be accounted for in another fund.
- b) **Planning Projects Fund** – used to account for resources derived from specific sources, which are usually required by law or regulation to be accounted for in separate funds.

**SOUTH FLORIDA REGIONAL PLANNING COUNCIL  
NOTES TO THE FINANCIAL STATEMENTS  
SEPTEMBER 30, 2024**

---

**Note 2 - Summary of Significant Accounting Policies (cont'd)**

- c) ***The Revolving Loan Fund*** – used to account for resources derived from the various Revolving Loan portfolios (“RLF”). The RLF fund is used to account for revolving loan funds from the Department of Commerce through the Economic Development Administration (“EDA”) and the Environmental Protection Agency (“EPA”). The EDA RLF CARES fund is used to provide loans to small and medium size local businesses to mitigate the negative economic effects of the Coronavirus pandemic in 2020. The EDA RLF is used to provide loans to small and medium size businesses located within Miami-Dade, Broward and Monroe Counties that have evidence demonstrating that credit is not otherwise available on terms and conditions that permit the completion or successful operation of the activity to be financed. The EPA RLF is used to fund loans on qualified, suitable market-ready Brownfield sites to appropriate developers and buyers (for-profit and non-profit developers or local governments). The loan fund will assist in the remediation activities required for site cleanup that will allow redevelopment projects to go forward. The primary target areas for loans are the eastern portion of Miami-Dade, Broward, and the Palm Beach Counties.
- d) ***SFRPI Fund*** – used to account for the financial activity of Southeast Florida Regional Prosperity Institute, Inc. (“SFRPI”), a component unit of the Council. SFRPI is a not-for-profit corporation created by the Council. SFRPI provides educational and implementation opportunities to the economic development field and stakeholder groups concerning access to capital, environmental justice, conflict resolution, visioning as well as community development and redevelopment practices affecting land use, transportation, emergency management, safe and sanitary housing, health and the built environment, and natural resource protection and management.

**Measurement focus, basis of accounting and financial statement presentation**

Basis of accounting refers to the point at which revenues and expenditures or expenses are recognized in the accounts and reported in the financial statements. Basis of accounting relates to the timing of the measurements made, regardless of the measurement focus applied.

***Governmental Fund Financial Statements*** – The Council uses the accrual basis of accounting under which revenues and expenses of the Council are recorded in the accounting period in which they are earned or incurred.

Expenditures are recorded when obligations are incurred, except for expenditures related to claims and judgments, which are recorded only when payment is due.

***Government-wide Financial Statements*** – The government-wide financial statements are reported using the economic resources measurement focus and the accrual basis of accounting. Revenues are recorded when earned and expenses are recorded at the time liabilities are incurred, regardless of when the related cash flows take place. Intergovernmental and similar items are recognized as revenue as soon as all eligibility requirements imposed by the provider have been met.

**SOUTH FLORIDA REGIONAL PLANNING COUNCIL  
NOTES TO THE FINANCIAL STATEMENTS  
SEPTEMBER 30, 2024**

---

**Note 2 - Summary of Significant Accounting Policies (cont'd)**

GASB Statement No. 54 establishes fund balance classifications that comprise a hierarchy based primarily on the extent to which a government is bound to observe constraints imposed upon the use of the resources reported in government funds. Currently, the Council utilizes two of the five designations for fund balance under this statement: restricted and unassigned. These designations are defined as follows:

***Restricted*** fund balance category includes amounts that can be spent only for the specific purposes stipulated by constitution, external source providers, or through enabling legislation. The planning projects fund and revolving loan funds are considered restricted as defined by the statement.

***Unassigned*** fund balance is classification for the government's general fund and includes all spendable amounts not contained in the other classifications. For fiscal year ended September 30, 2024, the unassigned fund balance in the Council's general fund could be used for the day-to-day operations of the Council.

**Cost allocation**

Expenses associated with specific grants or contracts are charged directly to the grants or contracts. Indirect expenses are allocated to active grants or contracts based on direct salary. This policy is consistent with the principles of 2 C.F.R. § 200.

**Budget policy**

Prior to October 1 of each year, the budget is legally adopted by the Council's Board. The budget is prepared based on the accrual basis of accounting which is the same basis of accounting used to reflect actual revenues and expenditures recognized in accordance with accounting principles generally accepted in the United States of America. All actual amounts are presented in the Combined Statement of Revenues, Expenditures and Changes in Fund Balance.

**Risk management**

It is the policy of the Council to purchase insurance for the risks of losses related to torts; theft of, damage to, and destruction of assets; errors and omissions; injuries to employees; and natural disasters. The Council obtained workers' compensation, property, general liability and automobile insurance coverage through the Florida Municipal Insurance Trust Fund of the Florida League of Cities, Inc. The Council obtained, from third party insurers, employee group life and disability insurance.

**Encumbrances**

The Council does not utilize encumbrance accounting, under which purchase orders, contracts, and other commitments for the expenditure of monies are recorded to reserve that portion of the applicable appropriation.

**SOUTH FLORIDA REGIONAL PLANNING COUNCIL  
NOTES TO THE FINANCIAL STATEMENTS  
SEPTEMBER 30, 2024**

---

**Note 2 - Summary of Significant Accounting Policies (cont'd)**

**Accounting estimates**

The preparation of financial statements in conformity with accounting principles generally accepted in the United States of America requires management to make estimates and assumptions that affect the reported amounts of assets, deferred outflows, liabilities and deferred inflows and disclosures of contingent assets and liabilities at the date of the financial statements and the amounts of revenues and expenditures/expenses during the reporting period. Actual results could differ from those estimates.

**Cash and cash equivalents**

Cash and cash equivalents include amounts in demand deposit accounts and highly liquid investments (including restricted assets) with maturity of three months or less when purchased.

**Investments**

Investments are stated at fair value.

**Contract and grant receivables**

Contract and grant receivables are stated at gross value. In management's opinion, all receivables are collectible as of year-end.

**Loans receivable/allowance for loan losses**

Loans are stated at the amount of unpaid principal, reduced by an allowance for loan losses. The allowance for loan losses is established through a provision for loan losses charged as an expense.

**Restricted assets**

The use of certain assets is restricted to finance business development activities with local economic development strategies and for revolving loan fund activities. Assets so designated are identified as restricted assets on the balance sheet.

**Capital assets**

Capital assets, which include office furniture and equipment and leasehold improvements, are recorded as capital outlay expenditures in the General Fund at the time goods are received and a liability is incurred. These assets are then capitalized at cost in the statement of net position. Fixed assets are depreciated using the straight-line method over two to ten years for furniture and equipment, and the remaining lease period for leasehold improvements. The depreciation expense is recorded in the statement of activities.



**SOUTH FLORIDA REGIONAL PLANNING COUNCIL**  
**NOTES TO THE FINANCIAL STATEMENTS**  
**SEPTEMBER 30, 2024**

---

**Note 2 - Summary of Significant Accounting Policies (cont'd)**

**Compensated absences**

The Council's policy is to permit regular employees to accumulate earned and unused vacation pay benefits up to 160 hours of vacation time. The liability for accumulated vacation hours is reflected in the statement of net position.

**Due to and from other funds**

Interfund receivables and payables arise from Interfund transactions and are recorded by funds affected in the period in which transactions are executed.

**Unearned revenues**

Unearned revenues are payments received from grantor agencies before the related costs are incurred.

**Pensions**

In the governmental activities Statement of Net Position, pension liabilities are recognized for the Council's proportionate share of each pension plan's net pension liability. For purposes of measuring the net pension liability, deferred outflows of resources related to pensions, deferred inflows of resources related to pensions, and pension expense, information about the fiduciary net position of the Florida Retirement System Pension Plan (Pension Plan) defined benefit plan and the Health Insurance Subsidy (HIS) defined benefit plan, and additions to and deductions from the Pension Plan's and the HIS's fiduciary net position, have been determined on the same basis as they are reported by the Pension Plan and HIS plans. Changes in the net pension liability during the period are recorded as pension expense, deferred outflows of resources, or deferred inflows of resources depending on the nature of the change. Those changes in the net pension liability that are recorded as deferred outflows of resources or deferred inflows of resources that arise from changes in actuarial assumptions or other inputs, changes in the proportionate share of the net pension liability, and differences between expected or actual experience, are amortized over the average expected remaining service lives of all employees that are provided with pensions through the pension plans, and recorded as a component of pension expense beginning with the period in which they arose. Differences between projected and actual investment earnings are reported as deferred outflows of resources or deferred inflows of resources and are amortized as a component of pension expense using a systematic and rational method over a five-year period.

**Income taxes**

The Council is exempt from federal and state income taxes; accordingly, no provision for income taxes is included in the financial statements.

**SOUTH FLORIDA REGIONAL PLANNING COUNCIL  
NOTES TO THE FINANCIAL STATEMENTS  
SEPTEMBER 30, 2024**

---

**Note 3 - Reconciliation of the Statement of Revenues, Expenditures and Changes in Fund Balances of Governmental Funds to the Statement of Activities**

Amounts reported for governmental activities in the statement of activities are different because:

Net change in fund balances – total governmental funds	\$ (27,942)
--------------------------------------------------------	-------------

Governmental funds report capital outlays as expenditures. In the statement of activities, the cost of capital assets purchased are allocated over their estimated useful lives and reported as depreciation expense.

Depreciation expense for the fiscal year ended September 30, 2024	(110,138) ▶
-------------------------------------------------------------------	-------------

Some expenses reported in the statement of activities do not require the use of financial resources and therefore are not reported as expenditures in governmental funds:

Net pension obligations	-
-------------------------	---

Changes in net position of governmental activities	<u>\$ (138,080)</u>
----------------------------------------------------	---------------------

**Note 4 - Cash and Investments**

As of September 30, 2024, the Council's cash and investments consisted of the following:

Cash and cash equivalents – Unrestricted Demand deposits and petty cash	\$ 1,508,518
Pooled investment fund – Florida SBA	12,513
Planning Projects Funds	714,759
EPA Brownfield Revolving Loan Fund	513,631
EDA Consolidated Loan Fund	696,434
EDA CARES Loan Fund	969,461
Total cash and cash equivalents and restricted cash	<u>\$ 4,415,316</u>

The carrying value of the above cash and investments equals fair value.

**Deposits**

The Council's deposits are held in financial institutions with Federal depository insurance that are approved by the State Treasurer to hold public funds.

**SOUTH FLORIDA REGIONAL PLANNING COUNCIL  
NOTES TO THE FINANCIAL STATEMENTS  
SEPTEMBER 30, 2024**

---

**Note 4 - Cash and Investments (cont'd)**

**Investments**

The Council does not have an investment policy with specific provisions to limit exposure to credit risk, custodial credit risk, concentration of credit risk, interest rate risk, or foreign currency risk. Excess funds are invested with the Local Government Surplus Funds Investment Pool Trust Fund ("Florida Prime"), which is administered by the Florida State Board of Administration (SBA) and governed by Chapters 215 and 218 of the Florida Statutes, and Chapter 19-7 of the Florida Administrative Code (collectively, "applicable Florida Law").

As of September 30, 2024, South Florida Regional Council had a balance of \$12,513 invested in the State Board of Administration's Florida Prime Fund.

The Office of the Auditor General performs an operational audit of the activities and investments of the SBA. Investments in the pooled fund are held in the name of the SBA and are not registered with the Securities and Exchange Commission.

Florida PRIME is not a registrant with the Securities and Exchange Commission (SEC); however, SBA has adopted operating procedures consistent with those required of an SEC Rule 2a-7-like fund. A 2a-7-like external investment pool is one that is not registered with the SEC as an investment company, but nevertheless has a policy that it will, and does, operate in a manner consistent with SEC Rule 2a-7, which governs the operation of SEC regulated money market funds.

**Restricted cash**

The EDA Consolidated Loan, EDA CARES Loan Fund, and EPA Brownfield Loan restricted cash represents funds available to be loaned to finance business development activities consistent with local economic development strategies.

**Note 5 - Loans Receivable/Allowance for Loan Losses**

In August 2000, the U.S. Department of Commerce, through the EDA, transferred the administration of Special Economic Development and Assistance Programs, Long-term Economic Deterioration (RLF I) to the Council from a local nonprofit organization. The outstanding balance of loans receivable and funds available to the program was \$2,745,569 and \$1,723,623, respectively, were likewise transferred to the Council.

On February 23, 2004, the U.S. Department of Commerce, through the EDA, signed an Offer to Amend Grant Agreement to transfer the administration of Special EDA Assistance Program Long-term Economic Deterioration (RLF II) and (RLF Rescue) to the Council from a nonprofit corporation. The outstanding balance of loans receivable and funds available to the program of \$1,571,858 and \$2,001,905, respectively, were transferred to the Council on May 1, 2004.

**SOUTH FLORIDA REGIONAL PLANNING COUNCIL**  
**NOTES TO THE FINANCIAL STATEMENTS**  
**SEPTEMBER 30, 2024**

---

**Note 5 - Loans Receivable/Allowance for Loan Losses (cont'd)**

In October 2008, the U.S. Department of Commerce, through the EDA, transferred the administration of Special Economic Development and Assistance Programs, Long-term Economic Deterioration (RLF III) to the Council from the City of Homestead. The outstanding balance of loans receivable and funds available to the program was \$179,523 and \$877,359, respectively, and were likewise transferred to the Council.

On September 22, 2010, an offer to consolidate the existing RLF awards was reached between the Council and the U.S. Department of Commerce, Economic Development Administration (EDA). The Consolidated financial award restated was \$10,997,147 in federal award, \$1,290,088 contributed by the original recipients for an estimated total of \$12,287,235. In October 2010, the Council consolidated RLF I, RLF II, RLF III and RLF Rescue into one fund (RLF Consolidated).

On March 9, 2021, and after more than seven years since the EDA disbursed the complete funding of \$4,804,118 as capital base for the RLF Consolidated program, the EDA released its federal interest in the funding. Consequently, the SFRPC no longer needs to comply with OMB regulations at 2CFR part 200, EDA regulations at 13 CFR Chapter III, the terms and conditions attached to the Award and the EDA-approved RLF plan or any related document governing administration of the Award.

As of September 30, 2024, EDA RLF Consolidated fund outstanding balance of loans receivable, net of allowance for doubtful accounts was \$4,338,729. There are \$85,935 in funds available to the program as of that date, after commitments of \$764,309 for future disbursements. The administrative costs (excluding bad debt expense) related to the management of RLF Consolidated loan program were \$199,221 for the year ended September 30, 2024.

As of September 30, 2024, \$1,327,488 was set up as an allowance for loan losses, an increase of \$238,766 in the Allowance from 2023 due to the default of different loans that were high risk. It is the Council staff's plan to restructure these loans in hope to get them paid in full.

On November 8, 2005, the Council entered into an agreement with the State of Florida Office of Tourism, Trade and Economic Development to administer a loan program for small businesses affected by Hurricane Wilma. Eleven Million (\$11,000,000) dollars were released to the Council for small business loans not to exceed twenty-five thousand (\$25,000) per business.

The funds were allocated as follows: five million dollars (\$5,000,000) for Broward, five million dollars (\$5,000,000) for Miami-Dade County and one million dollars (\$1,000,000) for Monroe. Eight million, four hundred seventy-two thousand, two hundred and four dollars (\$8,472,204) were disbursed to small businesses affected by hurricane Wilma from the three counties and the unused portion of the funds went back to the State including interest earned less administrative cost. The Council has restated the net position for the fiscal year ended September 30, 2021, to reflect the closeout of the Small Business Emergency Bridge Loan Fund related to Hurricane Wilma, as described in Note 9. On 5/16/19, the Council remitted the remaining \$151,603 in cash as well as the \$977,064 in outstanding loan receivables to the Florida Department of Economic Opportunity. This fund was included in prior years under the "Revolving Loan Funds - Other" and subtracted under the "OTTED Loan Exclusion". The net effect was to exclude it from the Net Position at the entity level.

**SOUTH FLORIDA REGIONAL PLANNING COUNCIL  
NOTES TO THE FINANCIAL STATEMENTS  
SEPTEMBER 30, 2024**

**Note 6 - Capital Assets**

The following is the summary of changes in capital assets for the year ended September 30, 2024:

Description	09/30/2023	Additions	Retirement	9/30/2024
Office Furniture & Equipment	\$ 60,302	\$ -	\$ -	\$ 60,302
Leasehold Improvements	153,690	-	-	153,690
Construction in Progress	-	-	-	-
<b>Sub-total</b>	213,992	-	-	213,992
Less accumulated depreciation and amortization	(136,359)	(18,687)	-	(155,046)
<b>Net</b>	<u>\$ 77,633</u>	<u>\$ (18,687)</u>	<u>\$ -</u>	<u>\$ 58,946</u>

Depreciation and amortization expense was \$18,687 in the fiscal year ended September 30, 2024.

**Right-of-use lease assets**

The Council has recorded the right-to-use lease assets as a result of implementing GASB Statement No. 87. The right-to-use lease assets are initially measured at an amount equal to the initial measurement of the related lease liability plus any lease payment made. The right-to-use lease assets are amortized on a straight-line basis over the shorter of the life of the asset or of the related lease. Refer to Note 10 for information on the liabilities relating to the right-of-use lease asset.

**Note 7 - Transfers In/Out**

The outstanding balances between Governmental funds mainly resulted from time lag between the dates that (a) inter-fund services are provided, or reimbursable expenditures occur, (b) transactions are recorded in the accounting system, and (c) payments between funds are made. Interfund balances to the General Fund are to provide interim resources to Planning Project Fund for expenses related to reimbursable funds and grants. There were no dues not recorded this year.

	<u>General Fund</u>	<u>Planning Projects Fund</u>	<u>Revolving Loan Funds</u>		<u>SFPI Fund</u>	<u>Total Funds</u>
			<u>EDA</u>	<u>Other</u>		
Operating Transfers in	\$ 1,038,062	\$ 312,354	\$ 148,745	\$ 42,816	\$ -	\$ 1,541,977
Operating Transfers (out)	(1,092,202)	(300)	(336,195)	(109,132)	-	(1,537,829)
<b>Total other financing sources (uses)</b>	<b>\$ (54,140)</b>	<b>\$ 312,054</b>	<b>\$ (187,450)</b>	<b>\$ (66,316)</b>	<b>\$ -</b>	<b>\$ 4,148</b>

**SOUTH FLORIDA REGIONAL PLANNING COUNCIL**  
**NOTES TO THE FINANCIAL STATEMENTS**  
**SEPTEMBER 30, 2024**

---

**Note 8 - Employee Benefit Plans**

All Council's employees participate in the Florida Retirement System (FRS). As provided by Chapters 121 and 112, Florida Statutes, the FRS provides two cost sharing, multiple employer defined benefit plans administered by the Florida Department of Management Services, Division of Retirement, including the Pension Plan and the Retiree Health Insurance Subsidy (HIS Plan).

Under Section 121.4501, Florida Statutes, the FRS also provides a defined contribution plan (Investment Plan) alternative to the Pension Plan, which is administered by the State Board of Administration (SBA). Generally, membership in the FRS is compulsory for all employees working in a regularly established position for a state agency, county government, district school board, state university, community college, or a participating city or special district within the State of Florida. The FRS provides retirement and disability benefits, annual cost-of-living adjustments, and death benefits to plan members and beneficiaries. The Florida Legislature establishes and may amend the contribution requirements and benefit terms of all FRS plans.

The plan administrator for FRS prepares and publishes its own stand-alone comprehensive annual financial report, including financial statements and required supplementary information. Copies of this report can be obtained from the Department of Management Services, Division of Retirement, Bureau of Research and Member Communications, P.O. Box 9000, Tallahassee, Florida 32315-9000; or at the Division's website ([www.frs.myflorida.com](http://www.frs.myflorida.com)).

**Pension Plan**

Plan Description - The Pension Plan is a cost-sharing multiple-employer defined benefit pension plan, with a Deferred Retirement Option Program (DROP) for eligible employees.

The general classes of membership for the Council are as follows:

Regular Class - Members of the FRS who do not qualify for membership in the other classes.

Senior Management Service Class (SMSC) - Members in senior management level positions

Employees enrolled in the Pension Plan prior to July 1, 2011, vest after six years of creditable service, and employees enrolled in the Pension Plan on or after July 1, 2011, vest after eight years of creditable service. Regular Class and SMSC members initially enrolled in the Pension Plan before July 1, 2011, once vested, are eligible for normal retirement benefits at age 62 or at any age after 30 years of creditable service. Members in these classes initially enrolled in the Pension Plan on or after July 1, 2011, once vested, are eligible for normal retirement benefits at age 65 or any time after 33 years of creditable service.

Early retirement may be taken any time after vesting within 20 years of normal retirement age; however, there is a 5.0% benefit reduction for each year prior to the normal retirement age.

DROP is available under the Pension Plan when the member first reaches eligibility for normal retirement. The DROP allows a member to retire while continuing employment for up to 60 months. While in the DROP, the member's retirement benefits accumulate in the FRS Trust Fund increased by a cost-of-living adjustment each July and earn monthly interest equivalent to an annual rate of 1.30%. DROP participants with an effective DROP commencement date before

**SOUTH FLORIDA REGIONAL PLANNING COUNCIL**  
**NOTES TO THE FINANCIAL STATEMENTS**  
**SEPTEMBER 30, 2024**

---

July 1, 2011, earn monthly interest equivalent to an annual rate of 6.50%.

Benefits Provided - Benefits under the Pension Plan are computed based on age and/or years of service, average final compensation, and service credit. Credit for each year of service is expressed as a percentage of the average final compensation. For members initially enrolled

before July 1, 2011, the average final compensation is the average of the five highest fiscal years' earnings; for members initially enrolled on or after July 1, 2011, the average final compensation is the average of the eight highest fiscal years' earnings. The total percentage value of the benefit received is determined by calculating the total value of all service, which is based on the retirement plan and/or class to which the member belonged when the service credit was earned. The following chart shows the percentage value for each year of service credit earned.

	% Value (per year of service)
<u>Regular Class members initially enrolled before July 1, 2011</u>	
Retirement up to age 62 or up to 30 years of service .....	1.60%
Retirement at age 63 or with 31 years of service .....	1.63%
Retirement at age 64 or with 32 years of service .....	1.65%
Retirement at age 65 or with 33 or more years of service.....	1.68%
<u>Regular Class members initially enrolled on or after July 1, 2011</u>	
Retirement up to age 65 or up to 33 years of service .....	1.60%
Retirement at age 66 or with 34 years of service .....	1.63%
Retirement at age 67 or with 35 years of service .....	1.65%
Retirement at age 68 or with 36 or more years of service.....	1.68%
<u>Special Risk Class</u>	
Service from Dec. 1, 1970 through Sept. 30, 1974 .....	2.00%
Service on and after Oct. 1, 1974 .....	3.00%

The benefits received by retirees and beneficiaries are increased by a cost-of-living adjustment (COLA) each July. If the member was initially enrolled in the Pension Plan before August 1, 2011, and all service credit was accrued before that time, the annual COLA is 3.0% per year. If the member effective retirement date or DROP begin date is on or after August 1, 2011, there is an individually calculated COLA. The annual COLA is a proportion of 3.0% determined by dividing the sum of the pre-July 2011 service credit by the total service credit at retirement multiplied by 3.0%. Pension Plan members initially enrolled on or after July 1, 2011, will not have a COLA after retirement.

Contributions - Effective July 1, 2011, all enrolled members of the Pension Plan, other than DROP participants, are required to contribute 3% of their salary to the Pension Plan. In addition to member contributions, governmental employers are required to make contributions to the Pension Plan based on state-wide contribution rates established by the Florida Legislature. These rates are updated as of July 1, of each year.

The employer contribution rates by job class for the periods from October 1, 2023, through June 30, 2024, and from July 1, 2024, through September 30, 2024, respectively, were as follows: Regular – 13.57% and 13.63%, Senior Management Service – 34.52 % and 34.52% and DROP participants 21.13% and 21.13%. These employer contribution rates include the HIS Plan contribution rates of 2% and 2%, or the administrative cost assessment of 0.06% and 0.06%. The 0.06% administrative/educational fee does not apply to DROP participants.



**SOUTH FLORIDA REGIONAL PLANNING COUNCIL  
NOTES TO THE FINANCIAL STATEMENTS  
SEPTEMBER 30, 2024**

---

**Note 8 - Employee Benefit Plans – Pension Plan (cont'd)**

For the fiscal year ending September 30, 2024, pension contributions, including employee contributions of \$43,810, to the Pension Plan for the Council totaled \$289,242.

Pension Liabilities, Pension Expense, and Deferred Outflows of Resources and Deferred Inflows of Resources Related to Pensions – As of September 30, 2024, the Council reported a liability of \$954,805 for its proportionate share of the Pension Plan's net pension liability.

The net pension liability was measured as of June 30, 2024, and the total pension liability used to calculate the net pension liability was determined by an actuarial valuation as of July 1, 2024. The Council's proportionate share of the net pension liability was based on the Council's 2023-2024 fiscal year contributions relative to the 2023-2024 fiscal year contributions of all participating members. As of June 30, 2024, the Council's proportionate share was 0.002468171% which was an increase of 0.000442823% from its proportionate share measured as of June 30, 2023.

For the fiscal year ended September 30, 2024, the Council reported employer contributions of \$245,432. In addition, the Council reported changes in deferred outflows of resources and deferred inflows of resources related to the Pension Plan from the following sources:

**Deferred Inflows**

Deferred Inflows - Change in Proportion	\$ 84,179
Deferred Inflows - Change in Proportion (reverse prior year)	(122,675)
Deferred Inflows - Experience	-
Deferred Inflows - Experience (reverse prior year)	-
Deferred Inflows - Investments	63,461
Deferred Inflows - Investments (reverse prior year)	-
<b>Total Change</b>	<b>\$ 24,965</b>

**Deferred Outflows**

Deferred Outflows - Contributions Subsequent to Measurement Date	\$ 31,453
Deferred Outflows - Assumptions	130,865
Deferred Outflows - Assumptions (reverse prior year)	(52,609)
Deferred Outflows - Change in Proportion	143,693
Deferred Outflows - Change in Proportion (reverse prior year)	(49,592)
Deferred Outflows - Contributions Subsequent to Prior Measurement Date	(26,734)
Deferred Outflows - Experience	96,461
Deferred Outflows - Experience (reverse prior year)	(75,774)
Deferred Outflows - Investments	-
Deferred Outflows - Investments (reverse prior year)	-
<b>Total Change</b>	<b>\$ 197,763</b>

The deferred outflows of resources related to the Pension Plan for the Council resulting from contributions to the Pension Plan subsequent to the measurement date will be recognized as a reduction of the net pension liability in the fiscal year ended September 30, 2024. Other amounts reported as deferred outflows of resources and deferred inflows of resources related to the Pension Plan will be recognized in pension expense as follows:



**SOUTH FLORIDA REGIONAL PLANNING COUNCIL  
NOTES TO THE FINANCIAL STATEMENTS  
SEPTEMBER 30, 2024**

**Note 8 - Employee Benefit Plans – Pension Plan (cont'd)**

<b>Fiscal Year Ending September 30th</b>		
2025	\$	(14,515)
2026		157,685
2027		11,495
2028		544
2029		8,656
Thereafter		-
<b>Total</b>	<b>\$</b>	<b>163,864</b>

Actuarial Assumptions - The total pension liability in the June 30, 2024, actuarial valuation was determined using the following actuarial assumptions:  
Mortality rates were based on the Generational RP-2000 with Projection Scale BB tables.

Inflation	2.40%
Salary Increases	3.5% average, including inflation
Investment rate of return	6.70%

The actuarial assumptions used in the July 1, 2024 valuation, were based on the results of an actuarial experience study for the period July 1, 2013, through June 30, 2023.

The long-term expected rate of return on Pension Plan investments was not based on historical returns, but instead is based on a forward-looking capital market economic model. The allocation policy's description of each asset class was used to map the target allocation to the asset classes shown below. Each asset class assumption is based on a consistent set of underlying assumptions and includes an adjustment for the inflation assumption. The target allocation and best estimates of arithmetic and geometric real rates of return for each major asset class are summarized in the following table:

<b>Asset Class</b>	<b>Target Allocation*</b>	<b>Annual Arithmetic Return</b>	<b>Compound Annual (Geometric) Return</b>	<b>Annual Standard Deviation</b>
Cash	1.0%	3.3%	3.3%	1.1%
Fixed Income	29.0%	5.7%	5.6%	3.9%
Global equity	45.0%	8.6%	7.0%	18.2%
Real estate	12.0%	8.1%	6.8%	16.6%
Private equity	11.0%	12.4%	8.8%	28.4%
Strategic Investments	2.0%	6.6%	6.2%	8.7%

Assumed Inflation - Mean 2.4% 1.5%

\* As outlined in the FRS Pension Plan's Investment policy available from Funds We Manage on the SBA's website at [www.sbafla.com](http://www.sbafla.com)

**SOUTH FLORIDA REGIONAL PLANNING COUNCIL**  
**NOTES TO THE FINANCIAL STATEMENTS**  
**SEPTEMBER 30, 2024**

---

**Note 8 - Employee Benefit Plans – Pension Plan (cont'd)**

Discount Rate - The discount rate used to measure the total pension liability was 6.70%. The Pension Plan's fiduciary net position was projected to be available to make all projected future benefit payments of current active and inactive employees. Therefore, the discount rate for calculation the total pension liability is equal to the long-term expected rate of return.

Sensitivity of the Proportionate Share of the Net Pension Liability to Changes in the Discount Rate - The following represents the Council's proportionate share of the net pension liability calculated using the discount rate of 6.70%, as well as what the proportionate share of the net pension liability would be if it were calculated using a discount rate that is one percentage point lower of (1%) or one percentage point higher (1%) than the current rate:

	1% Decrease	Current Discount Rate	1% Increase
	5.70%	6.70%	7.70%
Council's Proportionate share of Net Pension Liability	\$1,679,468	\$954,805	\$347,745

Pension Plan Fiduciary Net Position - Detailed information regarding the Pension Plan's fiduciary net position is available in the separately issued FRS Pension Plan and Other State-Administered Systems Comprehensive Annual Financial Report.

**HIS Plan**

Plan Description - The HIS Plan is a cost-sharing multiple-employer defined benefit pension plan established under Section 112.363, Florida Statutes, and may be amended by the Florida legislature at any time. The benefit is a monthly payment to assist retirees of State-administered retirement systems in paying their health insurance costs and is administered by the Florida Department of Management Services, Division of Retirement.

Benefits Provided - For the fiscal year ended September 30, 2024, eligible retirees and beneficiaries received a monthly HIS Plan payment of \$5 for each year of creditable service completed at the time of retirement, with a minimum HIS Plan payment of \$30 and a maximum HIS Plan payment of \$150 per month. To be eligible to receive these benefits, a retiree under a State-administered retirement system must provide proof of health insurance coverage, which may include Medicare.

Contributions - The HIS Plan is funded by required contributions from FRS participating employers as set by the Florida Legislature. Employer contributions are a percentage of gross compensation for all active FRS members. For the fiscal year ended September 30, 2024, the HIS Plan contribution rate for the period October 1, 2023, through June 30, 2024, and from July 1, 2024, through September 30, 2024, was 1.66% and 1.66%, respectively. HIS Plan contributions are deposited in a separate trust fund from which payments are authorized. HIS Plan benefits are not guaranteed and are subject to annual legislative appropriation. In the event, legislative appropriation or available funds fail to provide full subsidy benefits to all participants, benefits may be reduced or cancelled.

**SOUTH FLORIDA REGIONAL PLANNING COUNCIL**  
**NOTES TO THE FINANCIAL STATEMENTS**  
**SEPTEMBER 30, 2024**

---

**Note 8 - Employee Benefit Plans - HIS Plan (cont'd)**

Pension Liabilities, Pension Expense, and Deferred Outflows of Resources and Deferred Inflows of Resources Related to Pensions – As of September 30, 2024, the Council reported a liability of \$571,954 for its proportionate share of the HIS Plan's net pension liability. The net pension liability was measured as of June 30, 2024, and the total pension liability used to calculate the net pension liability was determined by an actuarial valuation as of June 30, 2024. The Council's proportionate share of the net pension liability was based on the Council's 2023-2024 fiscal year contributions relative to the 2023-2024 fiscal year contributions of all participating members. As of June 30, 2024, the Council's proportionate share was 0.00381278% which was an increase of 0.000457% from its proportionate share measured as of June 30, 2023.

For the fiscal year ended September 30, 2024, the Council reported employer contributions of (\$8,765). In addition, the Council reported changes to deferred outflows of resources and deferred inflows of resources related to the HIS Plan from the following sources:

**Deferred Inflows**

Deferred Inflows - Assumptions	\$ 904,699
Deferred Inflows - Assumptions (reverse prior year)	\$ (717,760)
Deferred Inflows - Change in Proportion	\$ 169,889
Deferred Inflows - Change in Proportion (reverse prior year)	\$ -
Deferred Inflows - Experience	\$ 14,674
Deferred Inflows - Experience (reverse prior year)	\$ (19,442)
<b>Deferred Inflows - Investments</b>	<b>\$ -</b>
Deferred Inflows - Investments (reverse prior year)	\$ -
<b>Total Change</b>	<b>\$ 352,060</b>

**Deferred Outflows**

Deferred Outflow - Contributions Subsequent to Measurement Date	\$ (102,939)
Deferred Outflows - Assumptions	\$ 135,243
Deferred Outflows - Assumptions (reverse prior year)	\$ (217,761)
Deferred Outflows - Change in Proportion	\$ 483,221
Deferred Outflows - Change in Proportion (reverse prior year)	\$ (648,854)
Deferred Outflows - Contributions Subsequent to Prior Measurement Date	\$ (95,103)
Deferred Outflows - Experience	\$ 73,787
Deferred Outflows - Experience (reverse prior year)	\$ (121,259)
Deferred Outflows - Investments	\$ -
Deferred Outflows - Investments (reverse prior year)	\$ (4,278)
<b>Total Change</b>	<b>\$ (497,943)</b>

The deferred outflows of resources related to the HIS Plan, totaling (\$497,943) for the Council, resulting from contributions to the HIS Plan subsequent to the measurement date, will be recognized as a reduction of the net pension liability in the fiscal year ended September 30, 2024.

**SOUTH FLORIDA REGIONAL PLANNING COUNCIL  
NOTES TO THE FINANCIAL STATEMENTS  
SEPTEMBER 30, 2024**

---

**Note 8 - Employee Benefit Plans - HIS Plan (cont'd)**

Other amounts reported as deferred outflows of resources and deferred inflows of resources related to the HIS Plan will be recognized in pension expense as follows:

0.00381278%

<b>Fiscal Year Ending September 30th</b>	
2025	\$ (8,659)
2026	(10,684)
2027	(15,563)
2028	(10,882)
2029	(5,929)
Thereafter	(1,656)
<b>Total</b>	<b>\$ (53,372)</b>

Actuarial Assumptions – Actuarial valuations for the HIS Plans are conducted biennially. The July 1, 2023, HIS Plan valuation is the most recent actuarial valuation and was used to develop the liabilities for June 30, 2024. Liabilities originally calculated as the actuarial valuation date have been recalculated as of June 30, 2024, using standard actuarial roll-forward technique. The total pension liability as of June 30, 2024, was determined using the following actuarial assumptions: Mortality rates were based on the Generational RP-2000 with Projection Scale BB tables.

Inflation	2.40%
Salary Increases	3.5% average, including inflation
Investment rate of return	6.70%

The actuarial assumptions that determined the total pension liability as of June 30, 2024, were based on the results of an actuarial experience study for the period July 1, 2013, through June 30, 2023.

Discount Rate - The discount rate used to measure the total pension liability as of June 30, 2024, was 3.65%. In general, the discount rate for calculating the total pension liability is equal to the single rate equivalent to discounting at the long-term expected rate of return for benefit payments prior to the projected depletion date. Because the HIS Plan benefit is essentially funded on a pay-as-you-go basis, the depletion date is considered to be immediate, and the single equivalent discount rate is equal to the municipal bond rate selected by the FRS Actuarial Assumption Conference. The Bond Buyer General Obligation 20-Bond Municipal Bond Index was adopted as the applicable municipal bond index. The discount rate used in the 2024 valuation was updated from 3.65% to 3.93%, reflecting the changed in the Bond Buyer General Obligation 20-Bond Municipal Index as of June 30, 2024.

**SOUTH FLORIDA REGIONAL PLANNING COUNCIL  
NOTES TO THE FINANCIAL STATEMENTS  
SEPTEMBER 30, 2024**

---

**Note 8 - Employee Benefit Plans - HIS Plan (cont'd)**

Sensitivity of the Proportionate Share of the Net HIS Liability to Changes in the Discount Rate - The following represents the Council's proportionate share of the net pension liability calculated as of September 30, 2024, using the discount rate of 3.93%, as well as what the proportionate share of the net pension liability would be if it were calculated using a discount rate that is one percentage point lower 2.93% or one percentage point higher 4.93% than the current rate:

	<b>1% Decrease</b>	<b>Current Discount Rate</b>	<b>1% Increase</b>
	2.93%	3.93%	4.93%
Council's Proportionate share of Net Pension Liability	\$651,096	\$571,954	\$506,253

HIS Plan Fiduciary Net Position - Detailed information regarding the HIS Plan's fiduciary net position is available in the separately issued FRS Pension Plan and Other State-Administered Systems Comprehensive Annual Financial Report.

**Investment Plan**

The SBA administers the defined contribution plan officially titled the FRS Investment Plan. The Investment Plan is reported in the SBA's annual financial statements and in the State of Florida Comprehensive Annual Financial Report.

As provided in Section 121.4501, Florida Statutes, eligible FRS members may elect to participate in the Investment Plan in lieu of the defined benefit pension plan. Council employees participating in DROP are not eligible to participate in the Investment Plan. Employer and employee contributions, including amounts contributed to individual member's accounts, are defined by law, but the ultimate benefit depends in part on the performance of investment funds. Benefit terms, including contribution requirements, for the Investment Plan are established and may be amended by the Florida Legislature. The Investment Plan is funded with the same employer and employee contribution rates that are based on salary and membership class, as the Pension Plan. Contributions are directed to individual member accounts, and the individual members allocate contributions and account balances among various approved investment choices. Costs of administering the Investment Plan, including the FRS Financial Guidance Program, are funded through an employer contribution of 0.04% of payroll and by forfeited benefits of plan members.

For all membership classes, employees are immediately vested in their own contributions and are vested after one year of service for employer contributions and investment earnings. If an accumulated benefit obligation for service credit originally earned under the Pension Plan is transferred to the Investment Plan, the member must have the years of service required for Pension Plan vesting (including the service credit represented by the transferred funds) to be vested for these funds and the earnings on the funds. Non-vested employer contributions are placed in a suspense account for up to five years. If the employee returns to FRS-covered employment within the five-year period, the employee will regain control over their account. If the

**SOUTH FLORIDA REGIONAL PLANNING COUNCIL  
NOTES TO THE FINANCIAL STATEMENTS  
SEPTEMBER 30, 2024**

---

**Note 8 - Employee Benefit Plans - Investment Plan (cont'd)**

employee does not return within the five-year period, the employee will forfeit the accumulated account balance.

After termination and applying to receive benefits, the member may rollover vested funds to another qualified plan, structure a periodic payment under the Investment Plan, receive a lump sum distribution, leave the funds invested for future distribution, or any combination of these options. Disability coverage is provided. The member may, either transfer the account balance to the Pension Plan when approved for disability retirement to receive guaranteed lifetime monthly benefits under the Pension Plan or remain in the Investment Plan and rely upon that account balance for retirement income.

**Note 9 - Long-Term Liabilities**

A summary of changes in long-term liabilities for the fiscal year ended September 30, 2024, are as follows:

**Note 9 Long-Term Liabilities**

	<b>09/30/2023</b>	<b>Increase</b>	<b>Decrease</b>	<b>9/30/2024</b>
Net pension liability	\$ 807,037	\$ 238,187	\$ -	\$ 1,045,224
Net HIS liability	516,609	-	1,448,749	(932,140)
Net lease liability	499,714	-	89,723	409,991
Total	<u>\$ 1,823,360</u>	<u>\$ 238,187</u>	<u>\$ 1,538,472</u>	<u>\$ 523,075</u>

**Note 10 – Commitments**

The Council conducts its operations from a leased office space. The five-year lease expires October 15, 2029. Total rental expense for the year ended September 30, 2024, was \$110,137.79. Future annual rental payments, including approximate common area maintenance cost and real estate taxes required under the amended lease and the extension period are included as follows:

**Year ending September 30th**

2025	111,646
2026	113,215
2027	114,847
2028	116,544
2029	118,309
Thereafter	65,180
<b>Total</b>	<b><u>\$ 639,742</u></b>

**SOUTH FLORIDA REGIONAL PLANNING COUNCIL  
NOTES TO THE FINANCIAL STATEMENTS  
SEPTEMBER 30, 2024**

---

**Note 11 - Contingencies**

The Council participates in several Federal programs and State projects. These programs and projects are subject to financial and compliance audits by the grantors or their respective representatives. The possible disallowance of any item charged to the program or project or request for the return of any unexpended funds cannot be determined at this time. No provision for any liability that may result has been made in the financial statements.

**Note 12 - Southeast Florida Regional Prosperity Institute, Inc. ("SFRPI")**

As described in Note 1, the Southeast Florida Regional Prosperity Institute, Inc ("SFRPI") is a component unit of the Council. Summary financial data as of September 30, 2024, for the SFRPI is as follows:

Cash	\$ 53,888
Receivables	-
Total Assets	<u>53,888</u>
<b>Liabilities:</b>	
Unearned revenue	-
Total Liabilities	<u>-</u>
<b>Fund Balance:</b>	
Unassigned	<u>53,888</u>
Total Fund Balance	<u>53,888</u>
Total Liabilities and Fund Balance	<u>53,888</u>
Total Revenue	11,931
Total Expenditures	<u>1,809</u>
Excess Revenue over Expenditures	<u>10,122</u>
Fund Balance at the beginning of year	<u>43,766</u>
Fund Balance at the end of year	<u>\$ 53,888</u>

**Note 13 - Subsequent Events**

Subsequent events are events or transactions that occur after the balance sheet date but before the financial statements are issued or are available to be issued. Subsequent events should be disclosed in the financial statements if exclusion of such disclosure would cause the financial statements to be misleading.

Management has evaluated subsequent events through June 16, 2025, the date the financial statements were available, and does not believe that there are any other events or transactions that require disclosure.

**SOUTH FLORIDA REGIONAL PLANNING COUNCIL**  
**REQUIRED SUPPLEMENTARY INFORMATION**  
**SEPTEMBER 30, 2024**

DRAFT



**SOUTH FLORIDA REGIONAL PLANNING COUNCIL  
BUDGETARY COMPARISON SCHEDULE  
GENERAL FUND  
FOR THE YEAR ENDED SEPTEMBER 30, 2024**

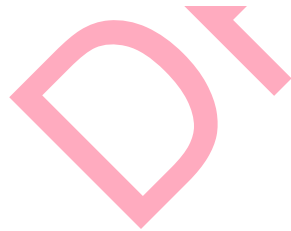
	<u>Original Budget</u>	<u>Final Budget</u>	<u>Actual</u>	<u>Variance to Final Budget Favorable (Unfavorable)</u>
<b>REVENUES</b>				
Local Funded Projects	\$ 262,000	\$ 270,900	\$ 222,779	\$ (48,121)
Other Revenues	<u>1,149,870</u>	<u>1,307,725</u>	<u>1,230,661</u>	<u>(77,064)</u>
Total Revenues	1,411,870	1,578,625	1,453,440	(125,185)
<b>EXPENDITURES</b>				
Local Funded Projects	882,000	882,000	167,009	714,991
Other Expenditures	<u>529,870</u>	<u>696,625</u>	<u>1,134,739</u>	<u>(438,114)</u>
Total Expenditures	1,411,870	1,578,625	1,301,748	276,877
Excess (deficiency) of revenues over expenditures	-	-	151,692	151,692
Other financing sources (uses)				
Operating Transfers in	-	-	1,038,062	1,038,062
Operating Transfers (out)	<u>-</u>	<u>-</u>	<u>(1,092,202)</u>	<u>(1,092,202)</u>
Net change in fund balance	-	-	97,552	97,552
Fund balance at beginning of year	<u>1,348,473</u>	<u>1,348,473</u>	<u>1,348,473</u>	<u>-</u>
Fund balance at end of year	<u>\$ 1,348,473</u>	<u>\$ 1,348,473</u>	<u>\$ 1,446,025</u>	<u>\$ 97,552</u>

The accompanying notes to the required supplementary information are an integral part of this schedule.

**SOUTH FLORIDA REGIONAL PLANNING COUNCIL  
BUDGETARY COMPARISON SCHEDULE  
PLANNING PROJECTS FUND  
FOR THE YEAR ENDED SEPTEMBER 30, 2024**

---

	<u>Original Budget</u>	<u>Final Budget</u>	<u>Actual</u>	<u>Variance to Final Budget Favorable (Unfavorable)</u>
<b>REVENUES</b>				
Total Revenues	\$ 769,767	\$ 1,177,335	\$ 1,159,044	\$ (18,291)
<b>EXPENDITURES</b>				
Total Expenditures	<u>769,767</u>	<u>1,177,335</u>	<u>1,256,370</u>	<u>(79,035)</u>
Excess (deficiency) of revenues over expenditures	-	-	(97,326)	(97,326)
Other financing sources (uses)				
Operating Transfers in	-	-	312,354	312,354
Operating Transfers (out)	<u>-</u>	<u>-</u>	<u>(300)</u>	<u>(300)</u>
Total other financing sources (uses)	<u>-</u>	<u>-</u>	<u>312,054</u>	<u>312,054</u>
Net change in fund balance	-	-	214,728	214,728
Fund balance at beginning of year	<u>518,446</u>	<u>518,446</u>	<u>518,446</u>	<u>-</u>
Fund balance at end of year	<u>\$ 518,446</u>	<u>\$ 518,446</u>	<u>\$ 733,174</u>	<u>\$ 214,728</u>



The accompanying notes to the required supplementary information are an integral part of this schedule.

**SOUTH FLORIDA REGIONAL PLANNING COUNCIL  
BUDGETARY COMPARISON SCHEDULE  
EDA REVOLVING LOAN FUNDS  
FOR THE YEAR ENDED SEPTEMBER 30, 2024**

	<u>Original Budget</u>	<u>Final Budget</u>	<u>Actual</u>	<u>Variance to Final Budget Favorable (Unfavorable)</u>
<b>REVENUES</b>				
Total Revenues	\$ 408,000	\$ 408,000	\$ 415,763	\$ 7,763
<b>EXPENDITURES</b>				
Total Expenditures	\$ 408,000	\$ 408,000	336,196	71,804
Bad Debt Expense			195,501	(195,501)
Excess (deficiency) of revenues over expenditures	-	-	(115,934)	(115,934)
Other financing sources (uses)				
Operating Transfers in	-	-	148,745	148,745
Operating Transfers (out)	-	-	(336,195)	(336,195)
Total other financing sources (uses)	-	-	(187,450)	(187,450)
Fund balance at beginning of year	9,337,957	9,337,957	9,337,957	-
Fund balance at end of year	<u>\$ 9,337,957</u>	<u>\$ 9,337,957</u>	<u>\$ 9,034,573</u>	<u>\$ (303,384)</u>

The accompanying notes to the required supplementary information are an integral part of this schedule.

**SOUTH FLORIDA REGIONAL PLANNING COUNCIL  
BUDGETARY COMPARISON SCHEDULE  
OTHER REVOLVING LOAN FUNDS  
FOR THE YEAR ENDED SEPTEMBER 30, 2024**

---

	<u>Original Budget</u>	<u>Final Budget</u>	<u>Actual</u>	<u>Variance to Final Budget Favorable (Unfavorable)</u>
<b>REVENUES</b>				
Total Revenues	\$ 474,000	\$ 474,000	\$ 446,983	\$ (27,017)
<b>EXPENDITURES</b>				
Total Expenditures	474,000	474,000	427,627	46,373
Excess (deficiency) of revenues over expenditures	-	-	19,356	19,356
Other financing sources (uses)				
Operating Transfers in	-	-	42,816	42,816
Operating Transfers (out)	-	-	(109,132)	(109,132)
Total other financing sources (uses)	-	-	(66,316)	(66,316)
Fund balance at beginning of year	<u>1,991,057</u>	<u>1,991,057</u>	<u>1,991,057</u>	<u>-</u>
Fund balance at end of year	<u>\$ 1,991,057</u>	<u>\$ 1,991,057</u>	<u>\$ 1,944,097</u>	<u>\$ (46,960)</u>

DRAFT

The accompanying notes to the required supplementary information are an integral part of this schedule.

**SOUTH FLORIDA REGIONAL PLANNING COUNCIL  
BUDGETARY COMPARISON SCHEDULE  
SFRPI FUND  
FOR THE YEAR ENDED SEPTEMBER 30, 2024**

---

	<u>Original Budget</u>	<u>Final Budget</u>	<u>Actual</u>	<u>Variance to Final Budget Favorable (Unfavorable)</u>
<b>REVENUES</b>				
Total Revenues	\$ -	\$ -	\$ 11,931	\$ 11,931
<b>EXPENDITURES</b>				
Total Expenditures	-	-	1,809	(1,809)
Excess (deficiency) of revenues over expenditures	-	-	10,122	10,122
Other financing sources (uses)				
Operating Transfers in	-	-	-	-
Operating Transfers (out)	<u>-</u>	<u>-</u>	<u>-</u>	<u>-</u>
Total other financing sources (uses)	<u>-</u>	<u>-</u>	<u>-</u>	<u>-</u>
Net change in fund balance	-	-	10,122	10,122
Fund balance at beginning of year	<u>-</u>	<u>-</u>	<u>43,766</u>	<u>43,766</u>
Fund balance at end of year	<u>\$ -</u>	<u>\$ -</u>	<u>\$ 53,888</u>	<u>\$ 53,888</u>



The accompanying notes to the required supplementary information are an integral part of this schedule.

**SOUTH FLORIDA REGIONAL PLANNING COUNCIL  
SCHEDULE OF CONTRIBUTIONS  
FLORIDA RETIREMENT SYSTEM PENSION PLAN  
LAST TEN FISCAL YEARS**

	2024	2023	2022	2021	2020	2019	2018	2017	2016	2015
<b>Contractually required contribution</b>	\$ 278,053	\$ 199,676	\$ 175,356	\$ 161,890	\$ 128,515	\$ 122,770	\$ 109,090	\$ 122,557	\$ 126,170	\$ 120,681
<b>Contributions in relation to the contractually required contribution</b>	(278,053)	(199,676)	(175,356)	(161,890)	(128,515)	(122,770)	(109,090)	(122,557)	(126,170)	(120,681)
<b>Contribution deficiency (excess)</b>	-	-	-	-	-	-	-	-	-	-
<b>SFRPC's covered-employee payroll</b>	\$ 1,613,614	\$ 1,288,729	\$ 1,205,522	\$ 1,188,177	\$ 1,006,185	\$ 865,803	\$ 797,279	\$ 958,014	\$ 1,023,750	\$ 1,004,216
<b>Contributions as a percentage of covered-employee payroll</b>	-17.23%	-15.49%	-14.55%	-13.63%	-12.77%	-14.18%	-13.68%	-12.79%	-12.32%	-12.02%

**Note: The amounts presented for each fiscal year were determined as of September 30th. Information is not available prior to fiscal year 2015.**

The accompanying notes to the required supplementary information are an integral part of this schedule.

**SOUTH FLORIDA REGIONAL PLANNING COUNCIL  
SCHEDULE OF PROPORTIONATE SHARE OF THE NET PENSION LIABILITY  
FLORIDA RETIREMENT SYSTEM PENSION PLAN  
LAST TEN FISCAL YEARS**

	2024	2023	2022	2021	2020	2019 3	2018	2017	2016	2015
SFRPC's proportion of the net pension liability (asset)	0.002468171%	0.002025348%	0.057256101%	0.058011151%	0.060856890%	0.059267773%	0.059740238%	0.057945094%	0.058090248%	0.053894033%
SFRPC's proportionate share of the net pension liability (asset)	\$ 954,805	\$ 25,458,602	\$ 21,303,871	\$ 4,382,083	\$ 26,376,273	\$ 20,410,438	\$ 17,994,069	\$ 17,145,653	\$ 14,667,833	\$ 6,961,137
SFRPC's covered-employee payroll	\$ 1,613,614	\$ 1,288,729	\$ 1,205,522	\$ 1,188,177	\$ 1,006,185	\$ 865,803	\$ 797,279	\$ 958,014	\$ 1,023,750	\$ 1,004,216
SFRPC's proportionate share of the net pension liability (asset) as a percentage of its covered-employee payroll	59.17%	1975.48%	1767.19%	368.81%	2621.41%	2357.40%	2256.93%	1789.71%	1432.75%	693.19%
Plan fiduciary net position as a percentage of the total pension liability	83.70%	82.38%	82.89%	96.40%	78.85%	82.61%	84.26%	83.89%	84.88%	92.00%

<sup>1</sup> The amounts presented for each fiscal year were determined as of 6/30.

<sup>2</sup>NPL at 2017 has been increased by \$10,152,810 due to implementation of GASB 75.

<sup>3</sup>NPL at 2019 has been decreased by \$940,602.

**Note 1:** The amounts shown above are for illustration purposes only. Each employer will determine the appropriate amounts to present based upon amounts published in the pension allocation schedules.

**Note 2:** The Plan's fiduciary net position as a percentage of the total pension liability is published in Note 4 of the Comprehensive Annual Financial Report.

**Note 3:** Refer to GASB 68, paragraph 81a - the information in this schedule should be determined as of the measurement date of the collective net pension liability.

**Note: The amounts presented for each fiscal year were determined as of September 30th.  
Information is not available prior to fiscal year 2015.**

The accompanying notes to the required supplementary information are an integral part of this schedule.

**SOUTH FLORIDA REGIONAL PLANNING COUNCIL  
SCHEDULE OF CONTRIBUTIONS  
FLORIDA RETIREMENT SYSTEM HEALTH INSURANCE SUBSIDY  
LAST TEN FISCAL YEARS**

	2024	2023	2022	2021	2020	2019	2018	2017	2016	2015
Contractually required contribution	\$ 32,280	\$ 21,393	\$ 20,012	\$ 14,460	\$ 18,969	\$ 16,966	\$ 13,936	\$ 15,661	\$ 17,275	\$ 12,598
Contributions in relation to the contractually required contribution	(32,280)	(21,393)	(20,012)	(14,460)	(18,969)	(16,966)	(13,936)	(15,661)	(17,275)	(12,598)
Contribution deficiency (excess)	-	-	-	-	-	-	-	-	-	-
SFRPC's covered-employee payroll	\$ 1,613,614	\$ 1,288,729	\$ 1,205,522	\$ 1,188,177	\$ 1,006,185	\$ 865,803	\$ 797,279	\$ 958,014	\$ 1,023,750	\$ 1,004,216
Contributions as a percentage of covered-employee payroll	-2.00%	-1.66%	-1.66%	-1.22%	-1.89%	-1.96%	-1.75%	-1.63%	-1.69%	-1.25%

**Note: The amounts presented for each fiscal year were determined as of September 30th.  
Information is not available prior to fiscal year 2015.**

The accompanying notes to the required supplementary information are an integral part of this schedule.



**SOUTH FLORIDA REGIONAL PLANNING COUNCIL  
SCHEDULE OF PROPORTIONATE SHARE OF THE NET PENSION LIABILITY  
FLORIDA RETIREMENT SYSTEM HEALTH INSURANCE SUBSIDY  
LAST TEN FISCAL YEARS**

	2024	2023	2022	2021	2020	2019	2018	2017	2016	2015
SFRPC's proportion of the net pension liability (asset)	0.050942444%	0.052156298%	0.047159501%	0.046730414%	0.046462988%	0.045544109%	0.044162719%	0.042122000%	0.041674824%	0.040376046%
SFRPC's proportionate share of the net pension liability (asset)	\$ 7,641,864	\$ 8,283,116	\$ 4,994,944	\$ 5,732,188	\$ 5,673,055	\$ 5,095,930	\$ 4,674,232	\$ 4,503,879	\$ 4,857,028	\$ 4,117,722
SFRPC's covered-employee payroll	\$ 1,613,614	\$ 1,288,729	\$ 1,205,522	\$ 1,188,177	\$ 1,006,185	\$ 865,803	\$ 797,279	\$ 958,014	\$ 1,023,750	\$ 1,004,216
SFRPC's proportionate share of the net pension liability (asset) as a percentage of its covered-employee payroll	473.59%	642.74%	414.34%	482.44%	563.82%	588.58%	586.27%	470.13%	474.43%	410.04%
Plan fiduciary net position as a percentage of the total pension liability	4.80%	4.12%	4.81%	3.56%	3.00%	2.63%	2.15%	1.64%	0.97%	0.50%

\* The amounts presented for each fiscal year were determined as of 6/30.

**Note 1:** GASB 68 requires information for 10 years. However, until a full 10-year trend is compiled, governments should present information for only those years for which information is available.

**Note 2:** The amounts shown above are for illustration purposes only. Each employer will determine the appropriate amounts to present based upon amounts published in the pension allocation schedules.

**Note 3:** The Plan's fiduciary net position as a percentage of the total pension liability is published in Note 4 of the Comprehensive Annual Financial Report.

**Note 4:** Refer to GASB 68, paragraph 81a - the information in this schedule should be determined as of the measurement date of the collective net pension liability.

**Note: The amounts presented for each fiscal year were determined as of September 30th.  
Information is not available prior to fiscal year 2014.**

The accompanying notes to the required supplementary information are an integral part of this schedule.

**SOUTH FLORIDA REGIONAL PLANNING COUNCIL  
NOTES TO REQUIRED SUPPLEMENTARY INFORMATION  
SEPTEMBER 30, 2024**

---

**Note 1- Budgetary Requirements**

The South Florida Regional Planning Council (the “Council”) prepares an annual operating budget for all the funds presented in the financial statements. They include the following:

1. General Fund
2. Planning Projects Fund
3. EDA Revolving Loan Fund
4. Other Revolving Loan Funds
5. The SFRPI Fund

The Council’s budgeting process is based on estimates of revenues and expenditures and requires that all budgets be approved by the Board of the Council (the “Board”). Subsequent amendments to the budget, if any, are approved by the Board; however, there were no amendments for fiscal year ended September 30, 2024.

Budgets are prepared on the same basis of accounting as required for Governmental Fund Types. Any remaining fund balances remain with the Council at the end of the year.

For the year ended September 30, 2024, the budget to actual comparison for the major funds were the following:

- General Fund revenues were \$1,453,440 or \$125,185 lower than the budget.
- General Fund expenditures were \$1,301,748 or \$276,877 lower than the budget.
- Planning Project Fund revenues were \$1,159,044 or \$18,291 lower than the budget.
- Planning Project Fund expenditures were \$1,256,370 or \$79,035 higher than the budget.
- EDA Revolving Loan Fund revenues were \$415,763 or \$7,763 higher than the budget.
- EDA Revolving Loan Fund expenditures were \$336,196 or \$71,804 lower than the budget.
- Other Revolving Loan Fund revenues were \$446,983 or \$27,017 lower than the budget.
- Other Revolving Loan Fund expenditures were \$427,627 or \$46,373 lower than the budget.

**Note 2 – Pension Information**

The discount rate used to measure the pension liability of the HIS plan as of June 30, 2024, was increased from 3.54% to 3.93%, reflecting the change in the Bond Buyer General Obligation 20-Bond Municipal Bond Index as of June 30, 2024.

**SOUTH FLORIDA REGIONAL PLANNING COUNCIL**

**COMPLIANCE SECTION**

**SEPTEMBER 30, 2024**

**DRAFT**

**INDEPENDENT AUDITOR'S REPORT ON INTERNAL CONTROL OVER FINANCIAL  
REPORTING AND ON COMPLIANCE AND OTHER MATTERS BASED ON AN AUDIT OF  
FINANCIAL STATEMENTS PERFORMED IN ACCORDANCE WITH GOVERNMENT  
AUDITING STANDARDS**

To the Council Members of the  
South Florida Regional Planning Council

We have audited, in accordance with the auditing standards generally accepted in the United States of America and the standards applicable to financial audits contained in *Government Auditing Standards* issued by the Comptroller General of the United States, the financial statements of the governmental activities and each major fund of the South Florida Regional Planning Council (the "Council"), as of and for the year ended September 30, 2024, and the related notes to the financial statements, which collectively comprise the Council's basic financial statements, and have issued our report thereon dated June 16, 2025.

**Report on Internal Control over Financial Reporting**

In planning and performing our audit of the financial statements, we considered the Council's internal control over financial reporting (internal control) as a basis for designing audit procedures that are appropriate in the circumstances for the purpose of expressing our opinions on the financial statements, but not for the purpose of expressing an opinion on the effectiveness of the Council's internal control. Accordingly, we do not express an opinion on the effectiveness of the Council's internal control.

A *deficiency in internal control* exists when the design or operation of a control does not allow management or employees, in the normal course of performing their assigned functions, to prevent, or detect and correct, misstatements on a timely basis. A *material weakness* is a deficiency, or a combination of deficiencies, in internal control, such that there is a reasonable possibility that a material misstatement of the entity's financial statements will not be prevented, or detected and corrected, on a timely basis. A *significant deficiency* is a deficiency, or a combination of deficiencies, in internal control that is less severe than a material weakness, yet important enough to merit attention by those charged with governance.

Our consideration of internal control was for the limited purpose described in the first paragraph of this section and was not designed to identify all deficiencies in internal control that might be material weaknesses or significant deficiencies. Given these limitations, during our audit we did not identify any deficiencies in internal control that we consider to be material weaknesses. However, material weaknesses may exist that have not been identified.

**Report on Compliance and Other Matters**

As part of obtaining reasonable assurance about whether the Council's financial statements are free from material misstatement, we performed tests of its compliance with certain provisions of laws, regulations, contracts, and grant agreements, noncompliance with which could have a direct and material effect on the financial statements. However, providing an opinion on compliance with those provisions was not an objective of our audit, and accordingly, we do not express such an opinion. The results of our tests disclosed no instances of noncompliance or other matters that are required to be reported under *Government Auditing Standards*.

**INDEPENDENT AUDITOR'S REPORT ON INTERNAL CONTROL OVER FINANCIAL  
REPORTING AND ON COMPLIANCE AND OTHER MATTERS BASED ON AN AUDIT OF  
FINANCIAL STATEMENTS PERFORMED IN ACCORDANCE WITH GOVERNMENT  
AUDITING STANDARDS - Continued**

**Purpose of this Report**

The purpose of this report is solely to describe the scope of our testing of internal control and compliance and the results of that testing, and not to provide an opinion on the effectiveness of the entity's internal control or on compliance. This report is an integral part of an audit performed in accordance with *Government Auditing Standards* in considering the entity's internal control and compliance. Accordingly, this communication is not suitable for any other purpose.

Hollywood, Florida  
June 16, 2025

DRAFT

## **INDEPENDENT AUDITOR'S REPORT ON COMPLIANCE FOR EACH MAJOR PROGRAM AND ON INTERNAL CONTROL OVER COMPLIANCE REQUIRED BY THE UNIFORM GUIDANCE**

To the Council Members of the  
South Florida Regional Planning Council

### **Report on Compliance for Each Major Federal Program**

#### ***Opinion on Each Major Federal Program***

We have audited the South Florida Regional Planning Council's (the "Council") compliance with the types of compliance requirements identified as subject to audit in the OMB *Compliance Supplement* that could have a direct and material effect on each of the Council's major federal programs for the year ended September 30, 2024. The Council's major federal programs are identified in the summary of auditor's results section of the accompanying schedule of findings and questioned costs.

In our opinion, the Council, complied, in all material respects, with the types of compliance requirements referred to above that could have a direct and material effect on each of its major federal programs for the year ended September 30, 2024.

#### ***Basis for Opinion on Each Major Federal Program***

We conducted our audit of compliance in accordance with auditing standards generally accepted in the United States of America; the standards applicable to financial audits contained in *Government Auditing Standards*, issued by the Comptroller General of the United States; and the audit requirements of Title 2 U.S. Code of Federal Regulations Part 200, *Uniform Administrative Requirements, Cost Principles, and Audit Requirements for Federal Awards* (Uniform Guidance). Our responsibilities under those standards and the Uniform Guidance are further described in the Auditor's Responsibilities for the Audit of Compliance section of our report.

We are required to be independent of the Council and to meet our other ethical responsibilities, in accordance with relevant ethical requirements relating to our audit. We believe that the audit evidence we have obtained is sufficient and appropriate to provide a basis for our opinion on compliance for each major federal program. Our audit does not provide a legal determination of the Council's compliance with the compliance requirements referred to above.

#### ***Responsibilities of Management for Compliance***

Management is responsible for compliance with the requirements referred to above and for the design, implementation, and maintenance of effective internal control over compliance with the requirements of laws, statutes, regulations, rules, and provisions of contracts or grant agreements applicable to the Council's federal programs.

#### ***Auditor's Responsibilities for the Audit of Compliance***

Our objectives are to obtain reasonable assurance about whether material noncompliance with the compliance requirements referred to above occurred, whether due to fraud or error, and express an opinion on the Council's compliance based on our audit. Reasonable assurance is a high level of assurance but is not absolute assurance and therefore is not a guarantee that an audit conducted in accordance with generally accepted auditing standards, *Government Auditing Standards*, and the Uniform Guidance will always detect material noncompliance when it exists. The risk of not detecting material noncompliance resulting from fraud is higher than for that resulting from error, as fraud may involve collusion, forgery, intentional omissions, misrepresentations, or the override of internal control. Noncompliance with the

**INDEPENDENT AUDITOR'S REPORT ON COMPLIANCE FOR EACH MAJOR PROGRAM  
AND ON INTERNAL CONTROL OVER COMPLIANCE REQUIRED BY THE UNIFORM  
GUIDANCE - Continued**

compliance requirements referred to above is considered material if there is a substantial likelihood that, individually or in the aggregate, it would influence the judgment made by a reasonable user of the report on compliance about the Council's compliance with the requirements of each major federal program as a whole.

In performing an audit in accordance with generally accepted auditing standards, *Government Auditing Standards*, and the Uniform Guidance, we:

- Exercise professional judgment and maintain professional skepticism throughout the audit.
- Identify and assess the risks of material noncompliance, whether due to fraud or error, and design and perform audit procedures responsive to those risks. Such procedures include examining, on a test basis, evidence regarding the Council's compliance with the compliance requirements referred to above and performing such other procedures as we considered necessary in the circumstances.
- Obtain an understanding of the Council's internal control over compliance relevant to the audit in order to design audit procedures that are appropriate in the circumstances and to test and report on internal control over compliance in accordance with the Uniform Guidance, but not for the purpose of expressing an opinion on the effectiveness of the Council's internal control over compliance. Accordingly, no such opinion is expressed.

We are required to communicate with those charged with governance regarding, among other matters, the planned scope and timing of the audit and any significant deficiencies and material weaknesses in internal control over compliance that we identified during the audit.

**Report on Internal Control over Compliance**

*A deficiency in internal control over compliance* exists when the design or operation of a control over compliance does not allow management or employees, in the normal course of performing their assigned functions, to prevent, or detect and correct, noncompliance with a type of compliance requirement of a federal program on a timely basis. *A material weakness in internal control over compliance* is a deficiency, or a combination of deficiencies, in internal control over compliance, such that there is a reasonable possibility that material noncompliance with a type of compliance requirement of a federal program will not be prevented, or detected and corrected, on a timely basis. *A significant deficiency in internal control over compliance* is a deficiency, or a combination of deficiencies, in internal control over compliance with a type of compliance requirement of a federal program that is less severe than a material weakness in internal control over compliance, yet important enough to merit attention by those charged with governance.

Our consideration of internal control over compliance was for the limited purpose described in the Auditor's Responsibilities for the Audit of Compliance section above and was not designed to identify all deficiencies in internal control over compliance that might be material weaknesses or significant deficiencies in internal control over compliance. Given these limitations, during our audit we did not identify any deficiencies in internal control over compliance that we consider to be material weaknesses, as defined above. However, material weaknesses or significant deficiencies in internal control over compliance may exist that were not identified.

Our audit was not designed for the purpose of expressing an opinion on the effectiveness of internal control over compliance. Accordingly, no such opinion is expressed.

The purpose of this report on internal control over compliance is solely to describe the scope of our testing of internal control over compliance and the results of that testing based on the requirements of the Uniform Guidance. Accordingly, this report is not suitable for any other purpose.

Hollywood, Florida  
June 16, 2025

**SOUTH FLORIDA REGIONAL COUNCIL  
SCHEDULE OF EXPENDITURES OF FEDERAL AWARDS  
FOR THE YEAR ENDED SEPTEMBER 30, 2024**

<b>FEDERAL AWARDS</b>	<b>ALN</b>	<b>Contract #</b>	<b>Expenditures</b>	<b>Loans Receivable</b>	<b>Cash &amp; Investments</b>	<b>Total Expenditures</b>	<b>Federal Share</b>
<u>US Dept. of Commerce - Economic Development Administration</u>							
<u>Economic Development Cluster</u>							
RLF CARES Act	11.307	04-79-07544	\$ 182,284	\$ 4,783,348	\$ 969,461	\$ 5,935,093	100.00% \$ 5,935,093
Economic Development Strategic Economic Development Plan	11.307	04-69-07325	54,896			54,896	50.00% 27,448
Economic Development Cluster			237,180	4,783,348	969,461	5,989,989	5,962,541
Total US Department of Commerce			237,180	4,783,348	969,461	5,989,989	5,962,541
<u>US Department of Defense</u>							
Community Economic Adjustment Assistance for Responding to Threats to the Resilience of a Military Installation	12.003	MIR1319-21-01	165,422			165,422	90.00% 148,880
Total US Department of Defense			165,422			165,422	148,880
<u>Federal Transit Administration (FTA)</u>							
Transit-Oriented Development (TOD)							
Passed through South Florida Regional Transportation Authority ("SFRTA")	20.500	D20 15-TODP-0008	97,753			97,753	97,753
<u>US Department of Transportation</u>							
Interagency Hazardous Materials Public Sector Training and Planning Grants							
Passed through the State of Florida Division of Emergency Management	20.703	D0005	17,168			17,168	17,168
Total US Department of Transportation			114,920			114,920	114,920
<u>US Department of Environmental Protection</u>							
Brownfields Multipurpose, Assessment, Revolving Loan Fund, and Cleanup Cooperative Agreements	66.818	BF-ODD93919-0	536,758			536,758	100.00% 536,758
Total US Department of Environmental Protection			536,758			536,758	536,758
<u>US Department of Energy</u>							
Conservation Research and Development	81.086	DE-EE0010586	138,525			138,525	138,525
Clean Cities Coalition Programmatic Support							
Total US Department of Energy			138,525			138,525	138,525
Total Federal Awards			\$ 1,192,806	\$ 4,783,348	\$ 969,461	\$ 6,945,615	\$ 6,901,625

The accompanying notes to the schedule of expenditures of federal awards are an integral part of this schedule.



**SOUTH FLORIDA REGIONAL COUNCIL  
NOTES TO THE SCHEDULE OF EXPENDITURES OF FEDERAL AWARDS  
FOR THE YEAR ENDED SEPTEMBER 30, 2024**

---

**Note 1 - Summary of Significant Accounting Policies**

The accompanying Schedule of Expenditures of Federal Awards included herein represents the Federal grant activity of the South Florida Regional Council (the "Council").

**Basis of Presentation**

The information in this schedule is presented in accordance with accounting principles generally accepted in the United States and the requirements of Title 2, Part 200 of the Code of Federal Regulations (2 CFR part 200). Some amounts presented in this schedule may differ from amounts presented in, or used in, the preparation of the basic financial statements.

**Basis of Accounting**

The expenditures in the accompanying Schedule of Expenditures of Federal Awards are presented using the accrual basis of accounting. The accrual basis recognizes expenses when they are incurred.

**Note 2 - Indirect Cost Rate**

The Council has not elected to use the 10 percent de minimis cost rate allowed under the Uniform Guidance.

**Note 3 - Loans Receivable**

The Schedule of Expenditures of Federal Awards (SEFA) for EDA RLF grant (ALN 11.307, contract # 04-79-07544) shows as a separate line item calculated as follows:

1. Balance of RLF loans outstanding at the end of the fiscal year, *plus*
2. Cash and investment balance in the RLF at the end of the fiscal year, *plus*
3. Administrative expenses paid out of RLF income during the fiscal year; *plus*
4. The unpaid principal of all loans written off during the fiscal year; *and then multiply this sum (1+ 2 +3+4) by*
5. The Federal share of the RLF. The Federal share is defined as the Federal participation rate (or the Federal grant rate) as specified in the grant award.

**Economic Development Agency Revolving Loan Funds**

	<b>2024</b>
	<b>RLF CARES</b>
Balance of Principal	\$ 4,783,348
Cash and Investments	\$ 969,461
Administrative Expenses	182,284
Net total	5,935,093
% of Federal Share	100.00%
Federal Share	<u>\$ 5,935,093</u>

**SOUTH FLORIDA REGIONAL COUNCIL  
NOTES TO THE SCHEDULE OF EXPENDITURES OF FEDERAL AWARDS  
FOR THE YEAR ENDED SEPTEMBER 30, 2024**

---

**Note 3 - Loans Receivable (cont'd)**

In March 2023, the Council was notified that the EDA Consolidated Revolving Loan Fund was defederalized by the Economic Development Agency.

The balance of RLF loan receivables outstanding as of September 30, 2024, are as follows:

<u>Loan Description</u>	<u>Balance</u>
Economic Adjustment Assistance Program	\$ 3,872,252
RLF Consolidated Allowance for Loan Losses	\$ (1,262,624)
CARES Act	\$ 4,783,348

**Note 4 - Contingencies**

Grant monies received and disbursed by the Council are for specific purposes and are subject to review by the grantor agencies. Such audits may result in requests for reimbursement due to disallowed expenditures. Based upon prior experience, the Council does not believe that such disallowances, if any, would have a material effect on the financial position of the Council. As of June 16, 2025, management is not aware of any material questioned or disallowed costs as a result of grant audits in process or completed; however, the possible disallowance by a governmental agency of any item charged to a program or project cannot be determined at this time.

**SOUTH FLORIDA REGIONAL COUNCIL  
SCHEDULE OF FINDINGS AND QUESTIONED COSTS  
FOR THE YEAR ENDED SEPTEMBER 30, 2024**

---

**Section I - Summary of Auditor's Results**

***Financial Statements***

Type of auditor's report issued:

**Unmodified**

- Material weakness(es) identified? \_\_\_Yes XNo
- Significant deficiency(ies) identified that are not considered to be a material weakness? \_\_\_Yes XNone Reported
- Noncompliance material to financial statements noted? \_\_\_Yes XNo

***Federal Awards***

Internal control over major programs:

- Material weakness(es) identified? \_\_\_Yes XNo
- Significant deficiency(ies) identified that are not considered to be a material weakness? \_\_\_Yes XNone Reported

Type of auditor's report issued on compliance for major programs:

**Unmodified**

Any audit findings disclosed that are required to be reported in accordance with 2 CFR 200.516(a)?

\_\_\_Yes XNo

Identification of major programs:

**ALN**

**Name of Federal Program**

11.307	U.S. Department of Commerce - Economic Adjustment Assistance ( <i>Economic Development Cluster</i> )
66.818	Brownfields Multipurpose, Assessment, Revolving Loan Fund, and Cleanup Cooperative Agreements

Dollar threshold used to distinguish between  
Type A and Type B programs:

\$750,000

Auditee qualified as a low-risk auditee?

XYes \_\_\_No

**SOUTH FLORIDA REGIONAL COUNCIL  
SCHEDULE OF FINDINGS AND QUESTIONED COSTS  
FOR THE YEAR ENDED SEPTEMBER 30, 2024**

---

**Section II - Financial Statement Current Year Findings and Questioned Costs**

There were no findings and questioned costs noted during the current year.

**Section III - Financial Statement Prior Year Findings and Questioned Costs**

There were no findings and questioned costs noted during the prior year.

**Section IV - Federal Award Current Year Findings and Questioned Costs**

There were no findings and questioned costs noted during the current year.

**Section V - Federal Award Prior Year Findings and Questioned Costs**

There were no findings and questioned costs noted during the prior year.

**Section VI - Other Matters**

There were no other matters noted in the current or prior year.

## **Management Letter in Accordance with Rules of the Auditor General of the State of Florida**

To the Council Members of the  
South Florida Regional Planning Council

### **Report on the Financial Statements**

We have audited the financial statements of the South Florida Regional Planning Council (the "Council") as of and for the fiscal year ended September 30, 2024, and have issued our report thereon dated June 16, 2025.

### **Auditor's Responsibility**

We conducted our audit in accordance with auditing standards generally accepted in the United States of America; the standards applicable to financial audits contained in *Government Auditing Standards*, issued by the Comptroller General of the United States; the audit requirements of Title 2 U.S. Code of Federal Regulations Part 200, *Uniform Administrative Requirements, Cost Principles, and Audit Requirements for Federal Awards* (Uniform Guidance); and Chapter 10.550, Rules of the Auditor General.

### **Other Reports and Schedule**

We have issued our Independent Auditor's Report on Internal Control over Financial Reporting and on Compliance and Other Matters Based on an Audit of the Financial Statements Performed in Accordance with *Government Auditing Standards*; Independent Auditor's Report on Compliance for Each Major Federal Program and Report on Internal Control over Compliance; Schedule of Findings and Questioned Costs; and Independent Accountant's Report on an examination conducted in accordance with AICPA Professional Standards, AT-C Section 315, regarding compliance requirements in accordance with Chapter 10.550, Rules of the Auditor General. Disclosures in those reports and schedule, which are dated June 16, 2025, should be considered in conjunction with this management letter.

### **Prior Audit Findings**

Section 10.554(1)(i)1., Rules of the Auditor General, requires that we determine whether or not corrective actions have been taken to address findings and recommendations made in the preceding financial audit report. There were no such findings or recommendations.

### **Official Title and Legal Authority**

Section 10.554(1)(i)4., Rules of the Auditor General, requires that the name or official title and legal authority for the primary government and each component unit of the reporting entity be disclosed in the management letter, unless disclosed in the notes to the financial statements. The name or official title and legal authority of the primary government and component unit are disclosed in the notes to the financial statements.

**Management Letter in Accordance with  
Rules of the Auditor General of the State of Florida - Continued**

**Financial Condition and Management**

Sections 10.554(1)(i)5.a. and 10.556(7), Rules of the Auditor General, require us to apply appropriate procedures and communicate the results of our determination as to whether or not the Council met one or more of the conditions described in Section 218.503(1), Florida Statutes, and to identify the specific condition(s) met. In connection with our audit, we determined that the Council did not meet any of the conditions described in Section 218.503(1), Florida Statutes.

Pursuant to Sections 10.554(1)(i)5.b. and 10.556(8), Rules of the Auditor General, we applied financial condition assessment procedures for the Council. It is management's responsibility to monitor the Council's financial condition, and our financial condition assessment was based in part on representations made by management and review of financial information provided by same.

Section 10.554(1)(i)2., Rules of the Auditor General, requires that we communicate any recommendations to improve financial management. In connection with our audit, we did not have any such recommendations.

**Property Assessed Clean Energy (PACE) Programs**

As required by Section 10.554(1)(i)6.a., Rules of the Auditor General, a PACE program authorized pursuant to Section 163.081 or Section 163.082, Florida Statutes, did not operate within the Council's geographical boundaries during the fiscal year under audit.

**Additional Matters**

Section 10.554(1)(i)3., Rules of the Auditor General, requires us to communicate noncompliance with provisions of contracts or grant agreements, or abuse, that have occurred, or are likely to have occurred, that have an effect on the financial statements that is less than material, but which warrants the attention of those charged with governance. In connection with our audit, we did not have any such findings.

**Purpose of this Letter**

Our management letter is intended solely for the information and use of the Legislative Auditing Committee, members of the Florida Senate and the Florida House of Representatives, the Florida Auditor General, Federal and other granting agencies, Members of the Council and management and is not intended to be and should not be used by anyone other than these specified parties.

Hollywood, Florida  
June 16, 2025

## **INDEPENDENT ACCOUNTANT'S REPORT**

To the Council Members of the  
South Florida Regional Planning Council

We have examined South Florida Regional Planning Council's (the "Council") compliance with the requirements of Section 218.415, Florida Statutes, during the fiscal year ended September 30, 2024. Management is responsible for the Council's compliance with those requirements. Our responsibility is to express an opinion on the Council's compliance based on our examination.

Our examination was conducted in accordance with attestation standards established by the American Institute of Certified Public Accountants. Those standards require that we plan and perform the examination to obtain reasonable assurance about whether management's assertion about compliance with the specified requirements is fairly stated, in all material respects. An examination involves performing procedures to obtain evidence about whether management's assertion is fairly stated, in all material respects. The nature, timing, and extent of the procedures selected depend on our judgment, including an assessment of the risks of material misstatement of management's assertion, whether due to fraud or error. We believe that the evidence we obtained is sufficient and appropriate to provide a reasonable basis for our opinion.

Our examination does not provide a legal determination on the Council's compliance with the specified requirements.

In our opinion, the Council complied in all material respects with Section 218.415, Florida Statutes for fiscal year ended September 30, 2024.

Hollywood, Florida  
June 16, 2025



# MEMORANDUM

AGENDA ITEM # IV.A

---

DATE: JUNE 16, 2025

TO: COUNCIL MEMBER

FROM: STAFF

SUBJECT: SFRPC REVOLVING LOAN FUNDS STATUS REPORT

---

The South Florida Regional Planning Council Revolving Loan Program has historically served the needs of businesses that are not entirely served by conventional lenders, with an emphasis on applicants who have been denied credit by a conventional lender. As such, the Council's RLF loans are considered riskier than conventional loans. The Loan Administration Board may charge a higher interest rate to a particular borrower depending on the risk factors of that loan. In addition, most loan payments are due on the first day of each month until maturity.

Attached for your review is the Revolving Loan Fund Status Report. In reviewing the attached status report, please note that the borrowers' loan agreements provide a fifteen (15) day grace period in which they can make their payments without a five percent late charge penalty. This status report is generated fifteen (15) days prior to the end of the month. Council staff routinely makes phone calls and sends past due notices to past due accounts after ten (10) and fifteen (15) days.

The Council policy on loan amounts and the structure of the loans for each loan program is:

*"Loan amounts may range from \$25,000 to \$500,000. Borrowers seeking more than one loan may not exceed \$500,000 in aggregate. Loans may be used for funding up to 100 percent of a project, provided that bank or conventional financing is unavailable, and that equity is nonexistent or is otherwise needed for cash flow. In cases where limited financing from a private/traditional source is available, loans can be used as supplemental or "second mortgage" funds. Second positions on collateral may be acceptable so long as the prior lien holder is a lending institution."*

Please find attached Legal Counsel's South Florida Regional Planning Council ("SFRPC") / Revolving Loan Fund report on legal action that has been taken to collect on delinquent accounts.



South Florida Regional Planning Council  
1 Oakwood Boulevard, Suite 250, Hollywood, Florida 33020  
954.924.3653 Phone, 954.924-3654 FAX  
[www.sfregionalcouncil.org](http://www.sfregionalcouncil.org)



**Payment Status Report**

**Traditional RLF Payment Status Report**

<b>Loan</b>	<b>Company /Borrower</b>	<b>Amount</b>	<b>Disbursed</b>	<b>Pmts</b>	<b>Rate</b>	<b>Last Activity</b>	<b>Last Balance</b>	<b>Paid Thru</b>	<b>Days Late</b>	<b>Last Activity</b>	<b>Next Pay Due</b>	<b>Loan Date</b>	<b>Maturity Date</b>	<b>Board Action</b>
1022	VOA CORPORATION	300,000.00	300,000.00	240	7.0	2,709.36	262,700.22	05/01/25	0	05/01/25	06/01/25	01/08/04	09/01/39	Performing
1023	CECIL'S DESIGNERS UNLIMITED	301,586.50	301,586.50	120	0.0	350.00	161,715.88	05/01/25	0	05/01/25	06/01/25	07/19/06	03/01/29	Performing
1039	24 HOUR AIR SERVICE, INC.	125,000.00	125,000.00	84	5.0	200.00	119,582.53	03/01/25	30	03/11/25	05/01/25	11/24/08	12/31/15	Performing
1040	PARAMOUNT BROADCASTING COMMUNICATION, LLC	200,000.00	200,000.00	84	5.0	1,472.32	41,178.69	05/01/25	0	05/01/25	06/01/25	02/02/09	08/01/28	Performing
3024	BROADWAY PLACE, INC	189,043.88	189,043.88	144	0.0	500.00	88,500.00	05/25/25	0	05/27/25	06/25/25	07/26/99	12/01/16	Default Final Judgment
4008	MUSCLE & WRENCH FITNESS EQUIPMENT SERVICE, INC.	300,000.00	300,000.00	0	5.0	750.00	142,401.75	05/12/25	0	05/19/25	06/12/25	07/31/09	03/31/39	Performing
4018	ANGELA L. DAWSON, P.A.	119,598.00	150,000.00	120	6.0	1,327.78	117,478.41	05/01/25	0	05/01/25	06/01/25	07/12/13	08/01/20	Performing
4024	SHERYL R. FACEY M.D., P.A.	235,000.00	235,000.00	240	5.0	250.00	148,931.59	04/01/25	30	04/11/25	05/01/25	04/16/14	05/01/26	Performing
4027	Sabores del Peru, LLC	149,500.00	149,500.00	120	5.0	1,590.98	25,368.20	05/01/25	0	05/06/25	06/01/25	12/15/15	12/15/25	Performing
4028	Sunrise City Community Housing Development 2747	75,000.00	75,000.00	1	0.0	765.03	74,994.72	04/01/19	2222	04/12/19	05/01/19	11/17/16	09/30/19	Pending Collateral Sale
4029	Sunrise City Community Housing Development 2843	75,000.00	75,000.00	1	0.0	803.02	75,000.00	04/01/19	2222	04/12/19	05/01/19	12/14/16	09/30/19	Pending Collateral Sale
4031	DANNY JELACA INC	332,972.82	332,972.82	111	6.5	2,000.00	321,849.33	05/01/25	0	05/01/25	06/01/25	09/28/17	08/01/28	Performing
4032	HIGHWAY STRIPING, INC.	300,000.55	300,000.55	120	7.0	3,577.27	145,279.99	05/01/25	0	05/01/25	06/01/25	10/24/18	11/01/28	Performing
4033	Angelo P. Thrower M.D.	254,999.57	254,999.57	84	0.0	250.00	187,832.65	10/15/23	563	10/12/23	11/15/23	10/25/18	10/25/25	In Legal

Loan	Company /Borrower	Amount	Disbursed	Pmts	Rate	Last Activity	Last Balance	Paid Thru	Days Late	Last Activity	Next Pay Due	Loan Date	Maturity Date	Board Action
4034	PHI Technologies Corp.	84,506.66	84,506.66	84	0.0	300.00	71,412.80	08/01/22	1003	08/01/22	09/01/22	01/03/19	01/03/26	Default Final Judgment
4035	J Stephens Construction	248,684.03	248,684.03	84	0.0	375.00	12,521.57	05/01/25	0	05/01/25	06/01/25	03/05/19	04/01/26	Performing
4036	J Stephens Construction	549,223.30	549,223.30	84	0.0	375.00	477,219.60	05/01/25	0	05/01/25	06/01/25	03/05/19	04/01/26	Performing
4037	Icytalent Group dba Umbree	173,904.64	173,904.64	84	5.0	1,750.00	104,107.82	05/01/25	0	05/01/25	06/01/25	03/28/19	03/28/26	Performing
4038	The Olab Group dba Orange Lab Media	99,885.78	99,885.78	60	7.0	1,500.00	29,282.77	05/01/25	0	05/01/25	06/01/25	03/28/19	03/28/26	Performing
4039	PHI Technologies Corp.	200,000.00	200,000.00	84	0.0	300.00	196,815.27	08/01/22	1003	08/01/22	09/01/22	03/12/20	04/01/27	Default Final Judgment
4040	SKYE PACKAGING, LLC	400,000.00	400,000.00	84	0.0	250.00	389,882.46	10/15/23	563	10/12/23	11/15/23	09/23/19	09/23/26	In Legal
4043	White Glove Linen	200,000.00	200,000.00	120	4.5	2,322.17	118,268.70	05/01/25	0	05/01/25	06/01/25	04/22/21	04/01/31	Performing
4044	T Nails LLC	130,000.00	130,000.00	120	4.5	1,347.30	82,818.56	05/01/25	0	05/01/25	06/01/25	03/22/21	03/01/31	Performing
4046	CCESAR, Inc.	100,000.00	100,000.00	60	0.0	300.00	82,627.84	05/01/25	0	05/01/25	06/01/25	10/06/22	10/01/27	Modification
4048	Broward County Minority Builders Coalition, Inc.	349,497.00	98,668.75	60	0.0	352.00	88,036.75	05/01/25	0	05/01/25	06/01/25	02/23/23	03/01/28	Performing
4049	Broward County Minority Builders Coalition, Inc.	331,700.00	80,271.75	60	0.0	301.00	75,455.75	05/01/25	0	05/01/25	06/01/25	02/23/23	03/01/28	Performing
4050	Broward County Minority Builders Coalition, Inc.	331,700.00	85,566.75	60	0.0	321.00	80,430.75	05/01/25	0	05/01/25	06/01/25	02/23/23	03/01/28	Performing
4053	Housing Foundation of America, Inc.	225,000.00	225,000.00	24	6.0	1,125.00	225,000.00	05/01/25	0	05/01/25	06/01/25	11/01/24	10/01/26	Performing
<b>Totals</b>		<b>6,381,802.73</b>	<b>5,663,814.98</b>			<b>27,464.23</b>	<b>3,946,694.60</b>							

**LIST OF COMMITTED TRADITIONAL RLF FUNDS**  
**June 1, 2025**

Loan #	Company Name	Committed	Commitment Date	Disbursed	Disbursement Date	Remaining Commitment
4052	Tayan Alliances, Inc. 2871 NW 6th Ct., Pompano Beach 1751 Lauderdale Manor Dr., Ft. Lauderdale	470,000	1/16/2024	\$0.00	n/a	\$ 470,000.00
	<b>TOTAL</b>	<b>\$470,000</b>		<b>\$0.00</b>		<b>\$ 470,000.00</b>

<b>Cash Available to Lend</b>				
Bank Balance as of	5/31/2025			\$ 1,217,996.88
Committed Funds				
Unfunded Loan Commitments	\$ 470,000			
Administrative Fees	14,817.00			
Total Committed Funds				\$ 484,817.00
<b>Total Uncommitted Funds</b>				<b>\$ 733,179.88</b>

Kerry L. Ezrol  
KEzrol@GorenCherof.com



**GOREN CHEROF  
DOODY & EZROL P.A.**  
ATTORNEYS AT LAW

June 2, 2025

**VIA E-MAIL ([isabelc@sfrpc.com](mailto:isabelc@sfrpc.com))**

Isabel Cosio Carballo, MPA, Executive Director  
South Florida Regional Planning Council  
Oakwood Business Center  
One Oakwood Boulevard, Suite 250  
Hollywood, FL 33320

Re: South Florida Regional Planning Council ("SFRPC") / Revolving Loan Fund Status Report

Dear Ms. Carballo:

Below please find the status of the Revolving Loan Fund cases which have been brought on behalf of the SFRPC. This shall confirm that once a judgment is obtained and recorded, our office has been instructed to take no further action, other than to re-record specified judgments, as requested, in a timely fashion. We have therefore removed all of the "Closed Cases" from this list. In the future, once a judgment is obtained and recorded relative to cases appearing on this list, they will be removed from this list.

**1. SFRPC adv. Equity Partners 102, LLC**  
**(Our File No. 9940633)**

Equity Partners 102 foreclosure complaint was filed with the Court on July 13, 2023. On July 24, 2023, SFRPC filed an Answer and did not assert affirmative defenses. Equity Partners seeks to foreclose its first mortgage against Ms. Dawson's real property located at 2748 NW 8<sup>th</sup> St. Fort Lauderdale, FL. On September 5, 2023, a hearing on Plaintiff Equity Partners' Motion for Order to Show Cause was scheduled. The Court deferred ruling on the entry of the foreclosure judgment. On October 9, 2023, the Court entered an Agreed Order Granting Plaintiff's Motion to Dismiss Defendant's Counterclaim, and gave the defendant until October 30<sup>th</sup> to file an amended counterclaim as to all counts. SFRPC's Motion for an extension of time was denied as it was moot because there will be an amended counterclaim filed at a later date. On April 25, 2024, Plaintiff filed its Motion for Summary Final Judgment, Affidavit in Support of MSFJ, Affidavit of Attorney Fees and Costs, and Affidavit of Reasonable Attorney Fees. On December 12, 2024, Defendant filed an Amended Motion Requesting Referral to Mediation to include SFRPC and the hearing was scheduled for December 17, 2024. The Court entered a Uniform Trial Order on

Isabel Cosio Carballo, Executive Director  
Page 2 of 2  
June 2, 2025

December 18, 2024, setting the trial period from June 2, 2025 until June 20, 2025. Mediation occurred on April 1, 2025. The case did not settle.

On March 31, 2025, SFRPC filed a Notice of Filing Satisfaction of Mortgage and Notice of Disclaimer, disclaiming any interest in the subject property. Also on March 31<sup>st</sup>, Ms. Dawson filed a Satisfaction of Mortgage, Notice of Taking Depositions of Alfred Andreu, Isabel Cosio Carballo, and Kerry Ezrol. On April 1, 2025, the Mediation Report was filed and reported that the proceedings were adjourned and no settlement was reached. On April 10, 2025, Plaintiff filed a Notice of Voluntary Dismissal without prejudice as to SFRPC. Ms. Dawson continues to attempt to bring SFRPC into this case. On April 21, 2025, SFRPC filed its Stipulation for Substitution of Counsel. Chris Stearns of Johnson Anselmo has been substituted as counsel. Ms. Dawson has sought to take the depositions of Kerry Ezrol and Sean Swartz. The depositions were cancelled by Ms. Dawson. Ms. Dawson has also filed a motion to disqualify Goren Cherof.

On May 2, 2025, the Court entered an Order Granting Plaintiff's Motion to Strike Demand for Jury Trial. On May 5, 2025, Defendant filed a Motion for Continuance and/or Stay of Calendar Call and the hearing was scheduled for May 21, 2025. On May 16, 2025, Defendant filed a Motion for Reconsideration and/or Rehearing Upon Order Entered on May 2, 2025. At the May 21, 2025 hearing, the Court entered an Order Resetting the Trial commencing October 20, 2025 to November 7, 2025 and scheduled a Calendar Call for October 16, 2025. On May 27, 2025, Plaintiff filed a Motion for Order to Specially Set Hearing Date on Plaintiff's Motion for Summary Final Judgment and the hearing is scheduled for June 17, 2025.

Should you have any questions, please feel free to contact me.

Sincerely yours,

*/s/ Kerry L. Ezrol*

Kerry L. Ezrol

KLE:jc

cc: Samuel S. Goren, General Counsel (via e-mail & hard copy)  
Alisha Lopez (via e-mail)  
Steve Foreman (via e-mail)  
Jeffrey Tart (via e-mail)  
Kathe Lerch (via e-mail)

**FOR IMMEDIATE RELEASE**

**June 9, 2025**

## **\$3.2 Million in New EPA Funding Awarded to the South Florida Regional Planning Council for Brownfields Redevelopment**

**Hollywood, FL.** — The South Florida Regional Planning Council (SFRPC) has been awarded two new competitive grants from the **U.S. Environmental Protection Agency (EPA)** totaling **\$3.2 million** to advance regional efforts in environmental cleanup, economic revitalization, and community resilience in Southeast Florida.

The awards include a **\$1.2 million Brownfields Assessment Coalition Grant** to assist the **City of Miami Department of Real Estate & Asset Management, The Allapattah Collaborative, and the South Florida Community Land Trust** with identifying and assessing properties that may be contaminated with hazardous substances. The grant will support the completion of 18 Phase I and nine Phase II environmental site assessments, the development of eight cleanup plans and 10 reuse plans, and community engagement activities. These funds will help address environmental barriers to redevelopment and support the creation of multi-family housing in Liberty City; a Multi-Purpose Community Center / Community Resilience Hub in Allapattah which will provide extensive community benefits including entrepreneurship training, community kitchen, and emergency services in extreme heat; and potential contamination in West Coconut Grove.

In addition, SFRPC received a **\$2 million Revolving Loan Fund (RLF) Supplemental Award** through the Bipartisan Infrastructure Law (BIL) to continue advancing brownfield cleanup and redevelopment efforts throughout the region. These funds will support the ongoing **Park Road rehabilitation project** at the former Hollywood Incinerator Ash Dump (HIAD) site in Hollywood, FL, a transformative public-private partnership that will convert the site into a vibrant, mixed-use community anchored by affordable housing, civic space, and neighborhood-serving retail.

“We’ve been waiting thirty years for this site to be funded. When I was a Hollywood City Commissioner, we were already applying and pushing to get it cleaned up. To see it finally move forward is incredible. I understand there are plans for a significant amount of housing to follow, which makes this an even bigger win for the community,” said the **Honorable Quentin “Beam” Furr, Broward County Mayor** and **Board Member of the South Florida Regional Planning Council**.

The SFRPC has administered an EPA-funded Brownfields Cleanup Revolving Loan Fund (BCRLF) since 2001. Through this program the SFRPC funds environmental site assessment, remediation, and subsequent redevelopment across Broward, Miami-Dade, and Monroe counties. SFRPC staff and technical consultants help borrowers achieve compliance with EPA requirements and provide them with information about financial incentives, such as tax credits, to support loan repayment.

Through the BCRLF, the SFRPC works in partnership with local and state agencies to leverage additional economic development tools—supporting projects that foster job creation, workforce housing, neighborhood-scale commercial redevelopment, and public health improvements. The program helps reduce investment risk and encourage redevelopment in communities historically overlooked for capital investment. Brownfields redevelopment projects funded through the SFRPC generate lasting regional impacts by stimulating the economy, enhancing community resilience, and expanding access to opportunity.

**To learn more about the Council’s Brownfields Cleanup Revolving Loan Fund or to inquire about available funding, please contact Senior Loan Officer, Jeffrey Tart at 954-924-3653 or [jtart@sfrpc.com](mailto:jtart@sfrpc.com).**

#### **About the South Florida Regional Planning Council**

The South Florida Regional Planning Council is the largest of Florida’s ten regional planning councils. The Council serves three counties—Monroe, Miami-Dade, and Broward—70 municipalities and an estimated 4.8 million residents. The membership of the South Florida Regional Planning Council consists of county and municipal elected officials, gubernatorial appointees, and ex-officio members from the Florida Department of Environmental Protection, the Florida Department of Transportation, and the South Florida Water Management District. The Council supports the region’s elected leaders and public, private, and nonprofit stakeholders through regional, collaborative planning and the development and implementation of programs and strategies which create a better future for Southeast Florida.

###

#### **MEDIA CONTACT:**

Rebecca Landesman  
SFRPC Communications & Marketing  
[rlandesman@sfrpc.com](mailto:rlandesman@sfrpc.com)

1 Oakwood Boulevard, Suite 250 | Hollywood, FL 33020 | [sfadmin@sfrpc.com](mailto:sfadmin@sfrpc.com)  
Connect with us on [Facebook](#) | [Twitter](#) | [Instagram](#) | [LinkedIn](#) | [YouTube](#)



## **SFRPC'S BROWNFIELDS CLEANUP REVOLVING LOAN FUND PROJECT UPDATE – FORMER HOLLYWOOD INCINERATOR ASH DUMP – BROWARD COUNTY, FL**



On May 16, 2025, the South Florida Regional Planning Council (SFRPC) was awarded a \$2,000,000 Supplemental Brownfields Revolving Loan Fund (RLF) grant from the U.S. Environmental Protection Agency (EPA) to support the Park Road Development project in Hollywood, Florida. This transformative public-private partnership will



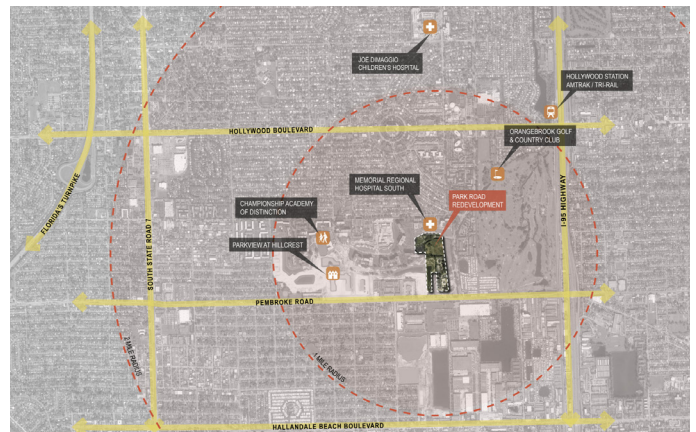
convert the former Hollywood Incinerator Ash Dump (HIAD) into a vibrant, mixed-use community anchored by affordable housing, civic space, and neighborhood-serving retail.

The Park Road redevelopment will bring 315 multifamily rental units, 40,000 square feet of grocery-anchored commercial space, and 31,000 square feet of general retail, including a gas station. The project is expected to leverage approximately \$71 million in private investment.



The redevelopment of the Hollywood Incinerator Ash Dump is a public-private partnership between the City of Hollywood (City) and Park Road Development, LLC (PRD). After an extensive solicitation process, the City selected PRD and its principals, Louis Birdman and Eric Metz, to lead the redevelopment effort. PRD has completed substantial environmental and geotechnical investigations to confirm HIAD's varying site conditions and is pursuing the regulatory approvals required to redevelop the site. Broward County has consulted with both the City and PRD to confirm the regulatory pathway to remediate the site, and the technical process to confirm the mitigation requirements are targeted to be completed in the next 9–12 months (subject to typical approval schedules, hearings, etc.).

The redevelopment is comprised of approximately  $\pm 100,000$  SF of City facilities,  $\pm 40,000$  SF medical office,  $\pm 4,500$  SF retail with a gas station, and  $\pm 630$  multifamily units. All of the final uses are subject to definitive approvals with Broward County and the City. This project supports regional goals around affordable housing, economic development, and environmental remediation.



To learn more about the SFRPC Brownfields Cleanup Revolving Loan Fund or how to get involved, please contact Senior Loan Officer, Jeffrey Tart at 954-924-3653 or [jtart@sfrpc.com](mailto:jtart@sfrpc.com).



# MEMORANDUM

AGENDA ITEM # IV.B

---

DATE: JUNE 16, 2025

TO: COUNCIL MEMBERS

FROM: STAFF

SUBJECT: SFRPC CARES ACT RLF STATUS REPORT

---

The U.S. Department of Commerce's Economic Development Administration is partnering with the South Florida Regional Planning Council (SFRPC) to oversee and administer a new \$5.90 million CARES ACT Business Revolving Loan Fund program that will alleviate sudden and severe economic dislocation caused by the coronavirus in Monroe, Miami-Dade, Broward and Palm Beach counties. Designated a U.S. Department of Commerce Economic Development District in 1994, the SFRPC welcomes this new program into its lending portfolio as it continues to expand its economic development activities.

The initiative/focus is to initially conduct financial assessments of vital and essential South Florida small businesses to evaluate financial and resiliency capacity with the focus on maintaining ongoing operations. Once assessed, the SFRPC along with its coalition partners will determine an applicable loan program to meet the financial needs of the small business in order to maintain its vital operations. This supplemental financial assistance award will help support critical small business operations for the long-term within industries that are essential in South Florida.

Since the program was launched on August 5, 2020, the SFRPC has received in excess of 400 prospects inquiring into the loan program from Palm Beach, Broward, Miami-Dade and Monroe counties. The Initial loan program funding was available for up to 2 years or until all loan funds were disbursed. Currently, the program is revolving in nature, as all initial funds have been deployed and new businesses have an opportunity to seek financial support as loan proceeds are repaid from former borrowers.

In December 2024, the EDA completed their RLF Risk Analysis and conveyed the South Florida Regional Planning Council earned a current annual risk rating of an "B+" for the fiscal year ending 9/30/2024.

To date, loan administration has approved thirty-six (36) new CARES ACT RLF loans totaling \$7,860,077 and saved and/or created 347 related jobs.



South Florida Regional Planning Council  
1 Oakwood Boulevard, Suite 250, Hollywood, Florida 33020  
954.924.3653 Phone, 954.924-3654 FAX  
[www.sfrationalcouncil.org](http://www.sfrationalcouncil.org)

**CARES ACT REVOLVING LOAN FUND**  
**PAYMENT STATUS REPORT - JUNE 2025**

Loan	Company /Borrower	Amount	Disbursed	Pmts	Rate	Pay/Yr	Normal Pay	Last Activity	Last Balance	Paid Thru	Days Late	Last Activity	Next Pay Due	Loan Date	Maturity Date	Board Action
5100	DURAN CONCRETE PUMPING, INC	25,000.00	25,000.00	60	3.5000	12	454.79	454.79	1,789.38	06/01/25	0	06/02/25	07/01/25	10/20/20	11/01/25	Performing
5107	DERMACLINIC LLC	300,000.00	300,000.00	120	3.5000	12	2,966.58	2,966.58	175,409.58	06/01/25	0	06/02/25	07/01/25	11/20/20	11/01/30	Performing
5110	KEY HONEY CONTRACTING LLC	500,000.00	515,000.00	120	3.5000	12	4,934.78	4,934.78	362,643.16	06/01/25	0	06/02/25	07/01/25	01/13/21	01/01/31	Performing
5111	WHITE GLOVE LINEN	210,000.00	210,000.00	120	3.5000	12	2,076.60	2,076.60	126,670.95	06/01/25	0	06/02/25	07/01/25	12/31/20	01/01/31	Performing
5112	HORA MANAGEMENT PROGRAM LLC	500,000.00	500,000.00	120	3.5000	12	4,944.29	4,944.29	301,710.63	06/01/25	0	06/02/25	07/01/25	12/28/20	01/01/31	Performing
5114	FLORIDA PALM CONSTRUCTION INC	150,000.00	150,000.00	120	3.5000	12	1,483.29	1,483.29	92,998.82	06/01/25	0	06/02/25	07/01/25	02/24/21	02/01/31	Performing
5115	THE WIGGINS AGENCY LLC	100,000.00	100,000.00	60	0.0000	12	1,594.07	200.00	75,275.61	05/01/25	1	05/30/25	06/01/25	02/02/21	02/01/26	Performing
5117	FOOT, ANKLE & LEG VEIN CENTER, LLC	394,000.00	394,000.00	240	3.5000	12	4,000.00	4,000.00	306,559.56	06/01/25	0	06/02/25	07/01/25	05/13/21	05/01/31	Performing
5118	TAX CONSULTING GROUP, CORP	500,000.00	500,000.00	180	3.5000	12	3,493.33	3,493.33	406,739.70	06/01/25	0	06/02/25	07/01/25	06/15/21	07/01/36	Performing
5119	GLOBE TRAVEL MEDIA LLC	150,000.00	150,000.00	120	3.5000	12	1,441.59	1,441.59	104,956.85	06/01/25	0	06/02/25	07/01/25	08/12/21	08/01/31	Performing
5120	ALWAYS KEEP PROGRESSING, LLC	295,000.00	295,000.00	120	4.1490	12	3,258.10	3,258.10	233,464.04	06/01/25	0	06/02/25	07/01/25	08/09/21	08/01/31	Performing
5121	HBR CONSTRUCTION LLC	175,000.00	175,000.00	120	3.5000	12	1,730.50	1,730.50	114,907.90	06/01/25	0	06/02/25	07/01/25	08/24/21	08/01/31	Performing
5122	CAMACOL	500,000.00	500,000.00	120	3.5000	12	2,899.80	2,899.80	428,836.86	06/01/25	0	06/02/25	07/01/25	08/25/21	08/01/31	Performing
5123	EASTERN ACUPUNCTURE AND WELLNESS	250,000.00	250,000.00	120	3.5000	12	2,390.96	2,390.96	179,267.94	06/01/25	0	06/02/25	07/01/25	10/15/21	10/01/31	Performing
5125	FRESH AND CLEAN COIN LAUNDRY 2816, INC.	500,000.00	500,000.00	180	4.5000	12	3,824.97	3,824.97	413,988.87	06/01/25	0	06/02/25	07/01/25	01/13/21	10/01/31	Performing
5126	SCARANO FUNERAL HOMES	128,000.00	128,000.00	60	4.0000	12	2,357.31	2,357.31	48,057.72	06/01/25	0	06/02/25	07/01/25	02/15/22	02/01/27	Performing
5127	DB TERRAZZO CONSULTING, INC.	200,000.00	200,000.00	120	4.5000	12	2,072.77	2,072.77	149,350.65	06/01/25	0	06/02/25	07/01/25	06/09/22	06/01/32	Performing
5128	COMMUNITY PARTNERS OF SOUTH FLORIDA	468,036.20	468,036.20	36	5.0000	12	2,069.33	2,069.33	468,036.19	06/01/25	0	06/02/25	07/01/25	10/20/22	11/01/25	Performing
5129	FRESH AND CLEAN COIN LAUNDRY, LLC	250,000.00	250,000.00	180	6.0000	12	2,109.64	2,109.64	229,803.03	06/01/25	0	06/02/25	07/01/25	06/22/23	07/01/38	Performing
<b>Totals</b>		<b>5,595,036.20</b>	<b>5,610,036.20</b>				<b>50,102.70</b>	<b>48,708.63</b>	<b>4,220,467.44</b>							

## Portfolio Analysis

Funds: (37000)  
Status: All  
City: All  
County: All  
Loan Officer: All  
Loan# From 2 to 53005

Cutoff Date: 5/31/2025  
Run Date: 06/02/2025  
Run Time: 10:36:38 am  
Page 1 of 1

	Number	Balance	Percent%
All Outstanding Loans			
Current Accounts	19	4,254,186.80	100.00%
Past due 1-30 days	0	0.00	0.00%
Past due 31-60 days	0	0.00	0.00%
Past due 61-90 days	0	0.00	0.00%
Past due 91-120 days	0	0.00	0.00%
Past due 121-150 days	0	0.00	0.00%
Past due 151-180 days	0	0.00	0.00%
Greater than 180 days	0	0.00	0.00%
Total Portfolio	19	4,254,186.80	100.00%

Contaminated Portfolio	0	0.00	0.00%
------------------------	---	------	-------

Loans identified as being delinquent by 30 or more days and having a balance greater than zero as of the cutoff date.

Delinquent Loans	0	0.00	0.00%
------------------	---	------	-------

Loans identified by delinquent status in Loan Master, and having a balance greater than zero as of the cutoff date.

Default Loans	0	0.00	0.00%
---------------	---	------	-------

Loans identified by default status in Loan Master, and having a balance greater than zero as of the cutoff date.

Write-off Loans	0	0.00	0.00%
-----------------	---	------	-------

Loans identified by write-off status in Loan Master, and having a balance greater than zero as of the cutoff date.

# CARES ACT RLF FUNDING UPDATE

## AS OF: 06/01/2025

Loan #	LOAN AMOUNT	COUNTY	CITY
1	\$25,000.00	Monroe	Key Largo
2	\$30,000.00	Monroe	Islamorada
3	\$500,000.00	Broward	Pompano Beach
4	\$85,000.00	Palm Beach	Palm Springs
5	\$300,000.00	Miami- Dade	Miami
6	\$35,000.00	Broward	Hollywood
7	\$210,000.00	Broward	Miramar
8	\$150,000.00	Monroe	Key West
9	\$500,000.00	Monroe	Key West
10	\$500,000.00	Miami- Dade	Miami Beach
11	\$50,000.00	Broward	Hollywood
12	\$150,000.00	Broward	Davie
13	\$50,000.00	Broward	Lauderhill
14	\$243,000.00	Broward	Sunrise
15	\$394,000.00	Palm Beach	Boca Raton
16	\$300,000.00	Broward	Plantation
17	\$75,000.00	Broward	Fort Lauderdale
18	\$80,000.00	Miami- Dade	Miami
19	\$175,000.00	Palm Beach	West Palm Beach
20	\$500,000.00	Miami- Dade	Miami
21	\$150,000.00	Broward	Plantation
22	\$250,000.00	Miami- Dade	Miami Beach
23	\$500,000.00	Broward	Coconut Creek
24	\$128,000.00	Broward	Hollywood
25	\$365,000.00	Monroe	Key West
26	\$200,000.00	Broward	Plantation
27	\$75,000.00	Broward	Fort Lauderdale
28	\$200,000.00	Broward	Fort Lauderdale
29	\$100,000.00	Broward	Plantation
30	\$50,000.00	Broward	Lauderhill
31	\$462,036.20	Palm Beach	Riviera Beach
32	\$100,000.00	Miami- Dade	Miami
33	\$63,041.60	Broward	Sunrise
34	\$250,000.00	Broward	Sunrise
35	\$500,000.00	Palm Beach	Riviera Beach
36	\$115,000.00	Miami- Dade	Miami

TOTAL FUNDED: \$7,860,077.80



## MEMORANDUM

AGENDA ITEM #VI.A

---

DATE: JUNE 16, 2025

TO: COUNCIL MEMBERS

FROM: STAFF

SUBJECT: ATTENDANCE FORM

---

Information only.



South Florida Regional Planning Council  
1 Oakwood Boulevard, Suite 250, Hollywood, Florida 33020  
954.924.3653 Phone, 954.924-3654 FAX  
[www.sfrationalcouncil.org](http://www.sfrationalcouncil.org)



# 2024-2025 ATTENDANCE RECORD

COUNCILMEMBERS	9/30/24	10/21/24	11/18/24	MC 01/27/25	*B MPO 02/28/25	3/17/25	** 4/24/25	MDC TPO 5/19/25
<b>CAPLAN, Franklin</b> Councilmember, Key Biscayne Secretary	P	P	P	VP	P	P	P	P
<b>CATES, Craig</b> Monroe County Commission	P	VP	VP	P	VP	*	VP	*
<b>CORRADINO, Joseph</b> Mayor, Village of Pinecrest	A	VP	VP	*	*	*	*	*
<b>FURR, Beam</b> Broward County Mayor	P	P	P	*	P	P	P	P
<b>GARCIA, René, 1<sup>st</sup> Vice-Chair</b> Miami-Dade Co. Commission	VP	*	VP	*	D/VP	D/VP	P	D/VP
<b>GELLER, Steve, Past Chair</b> Broward County Commission	P	P	P	P	P	*	P	P
<b>GILBERT, III, Oliver G.</b> Miami-Dade Co. Commission	A	A	A	A	A	A	A	A
<b>GOLDBERG, Cary</b> <i>2<sup>nd</sup> Vice Chair</i> Governor's Appointee, Broward	VP	VP	VP	VP	*	*	VP	*
<b>HORLAND, Denise, Treasurer</b> Commissioner, Plantation	P	P	P	P	*	*	*	P
<b>KAUFMAN, Samuel</b> Commissioner, Key West	VP	VP	VP	VP	*	VP	VP	VP
<b>LINCOLN, Michelle</b> <i>Chair</i> Monroe County Commission	P	P	*	P	P	P	*	P
<b>McGHEE, Kionne L.</b> Miami-Dade Co. Commission	VP	*	A	A	A	A	A	A
<b>RODRIGUEZ, Maria</b> Commissioner Pembroke Pines	—	—	—	—	P	P	P	P
<b>UDINE, Michael</b> Broward County Commission	VP	VP	VP	VP	P	VP	VP	*

# 2024-2025 ATTENDANCE RECORD

<b>EX-OFFICIO MEMBERS</b>	9/30/24	10/21/24	11/18/24	MC 1/27/25	*B MPO 02/28/25	3/17/25	** 4/24/25	MDC TPO 5/19/25
<b>DAVILA, Sirena</b> Florida Dept. of Environmental Protection	VP	VP	VP	D	D	VP	VP	D/VP
<b>HUYNH, Dat</b> Florida Dept. of Transportation, Dist. 6	VP	A	VP	VP	VP	VP	VP	P
<b>PETERS, Victoria</b> Florida Dept. of Transportation, Dist. 4	*	VP	VP	D	D	*	—	—
<b>VILABOY, Armando L.</b> South Florida Water Management District	A	VP	VP	VP	D	*	VP	VP

A majority of the meetings were physical/virtual meetings

P = Present

VP = Virtually Present

A = Absent

D = Designee Present

\* = Excused Absence

- = Not Yet Appointed

MDC = MIAMI-DADE COUNTY

MC = MONROE COUNTY

MD TPO =Miami-Dade Transportation Planning Organization

B MPO = Broward Metropolitan Planning Organization

\* Joint Meeting

\*\* Exec. Committee/Workshop only