

SFRPC STAFF UPDATES

MONDAY, MARCH 17, 2025





Recent Projects & Accomplishments

Economic Development & Planning

- Update of Florida's Ocean Economy Report to the Legislature
- SUN Trail Economic Impact Study in Miami-Dade County
- Research and Analysis: National Reinsurance

Transportation, Resiliency, and Infrastructure

- Resilient Infrastructure Benefit-Cost Analysis Framework
- Impacts of Pedestrian and Bicycle Infrastructure on Safety, Health, and Economic Growth in Miami-Dade County
- SFRTA: GIS Rideshare Program Analysis
- SFRTA Transit-Oriented Development
- CEDS Business Case for Affordable Housing in TOD
- SF MIRR Phase 2: Project Implementation

Energy

- Clean Cities
 - Power Up Puerto Rico (April 8-9)
 - ACT Expo (April 28 - May 1)

Local Emergency Planning Committee

Key Engagements & Events

- Major Recognitions & Awards
- Expansion & Funding

Other Key Initiatives

- Development of Regional Impact (DRI) Review – City Park
- Revolving Loan Funds
- Brownfields Update
- Broward Economic Summit, Regional Resilience Projects, Joint Meetings



Update of Florida's Ocean Economy Report to the Legislature

288.036 F.S. established the Office of the Ocean Economy at Florida Atlantic University

Among other things, the Office will:

- Study and devise methods to help myriad oceanic operations — including shipyards, piers, fishing and aquaculture companies, cruise lines, commercial diving expeditions, marine transport businesses, floating and amphibious housing, and outdoor recreation industries — boost their short- and long-term profits while considering their environmental impacts.
- Educate other state and local organizations on how they can improve environmental issues while considering the economic impact of their policies.
- Coordinate with state and private universities and Florida College System institutions to encourage academic research.
- Promote Florida as the premier destination for ocean-related economic and educational interests.
- Beginning on Aug. 1, 2025, the OOE must provide an annual report to the Governor, Board of Governors, Senate President and House Speaker on job growth, wages, labor shortages and strategies for further economic development and policymaking. The report must also be published on the Office's website.

The SFRPC will prepare the first annual update of Florida's Ocean Economy for FAU President Hasner's report to the Florida Legislature.



RESILIENT INFRASTRUCTURE BENEFIT-COST ANALYSIS FRAMEWORK



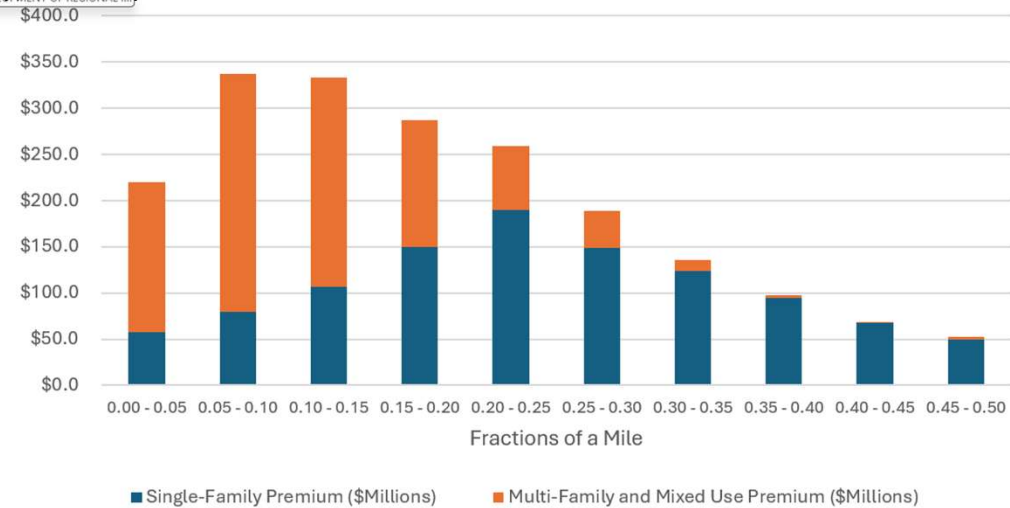
- Many communities face hard choices between investing in 'gray' versus 'green' infrastructure
- Federal guidelines and tools often have a very restricted view of how to weigh one or another or hybrid decisions
- Some communities may choose a broader perspective, such as accounting for ecosystem benefits, or lower long-run costs, but there is little standardization on how to weigh those concerns consistently
- This project has two phases:
 - **Phase one** is the development of a spreadsheet model to help local governments answer questions about balancing investment.
 - **Phase two**, if funded, will support the accompanying documentation.

SUN TRAIL ECONOMIC IMPACT STUDY IN MIAMI-DADE COUNTY



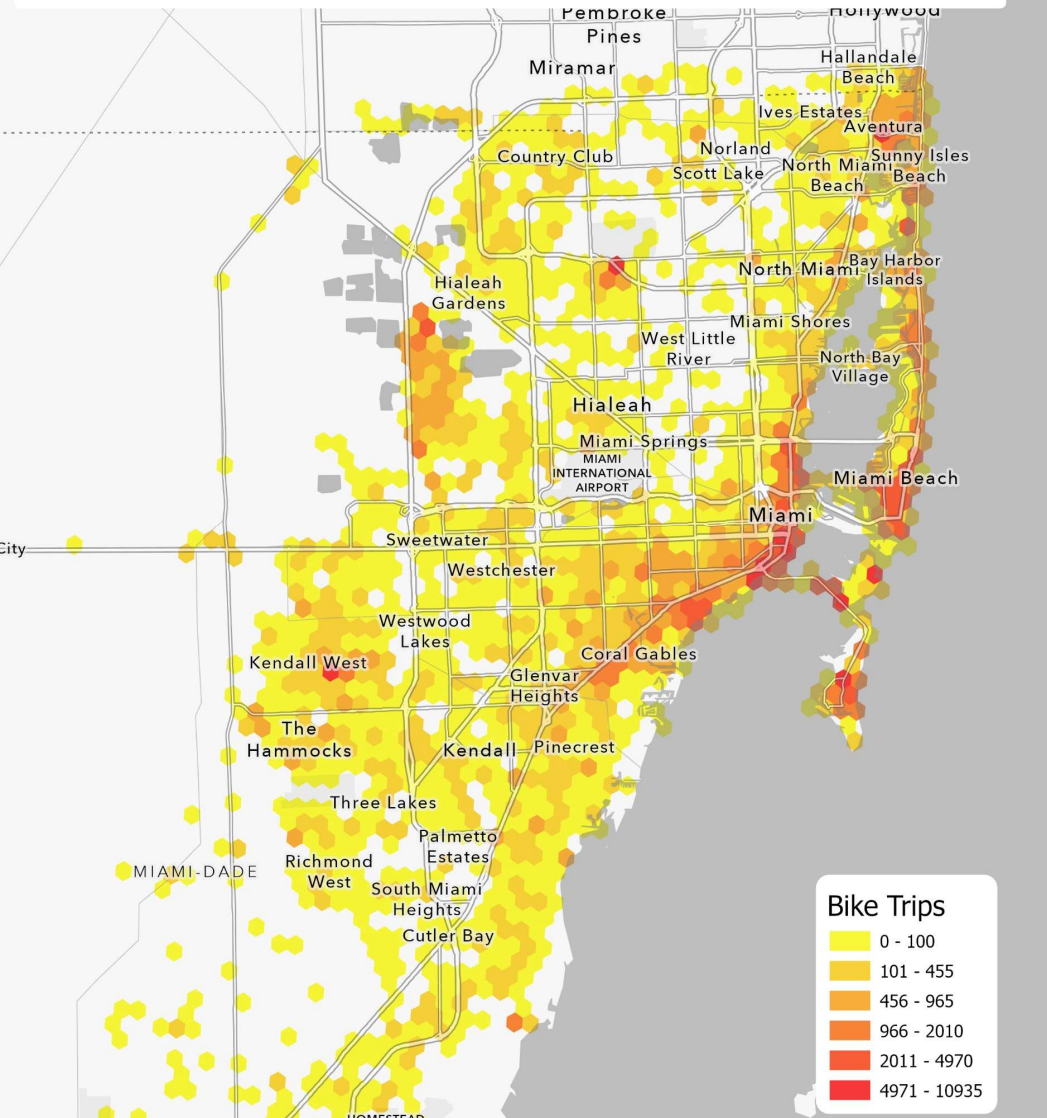
- **For FDOT D6:** How much do the Atlantic Beachwalk, South Dade, and the Underline Trails contribute to the Miami-Dade economy?
- Partnering with the Friends of the Underline to conduct a user survey to better calibrate that trail's impacts
- How do we incorporate a wide spectrum of economic impacts (property values, health impacts, trail user spending) into a Benefit-Cost Analysis to assist investment decision making?

Capitalization of Trail Proximity in Residential Property Values (\$Millions)



Source: SFRPC Statistical Modeling and Analysis of Miami-Dade Property Appraiser Data, 2025.

Annual Bike Trip Destinations Miami-Dade 2024



IMPACTS OF PEDESTRIAN AND BICYCLE INFRASTRUCTURE ON SAFETY, HEALTH, AND ECONOMIC GROWTH IN MIAMI-DADE COUNTY



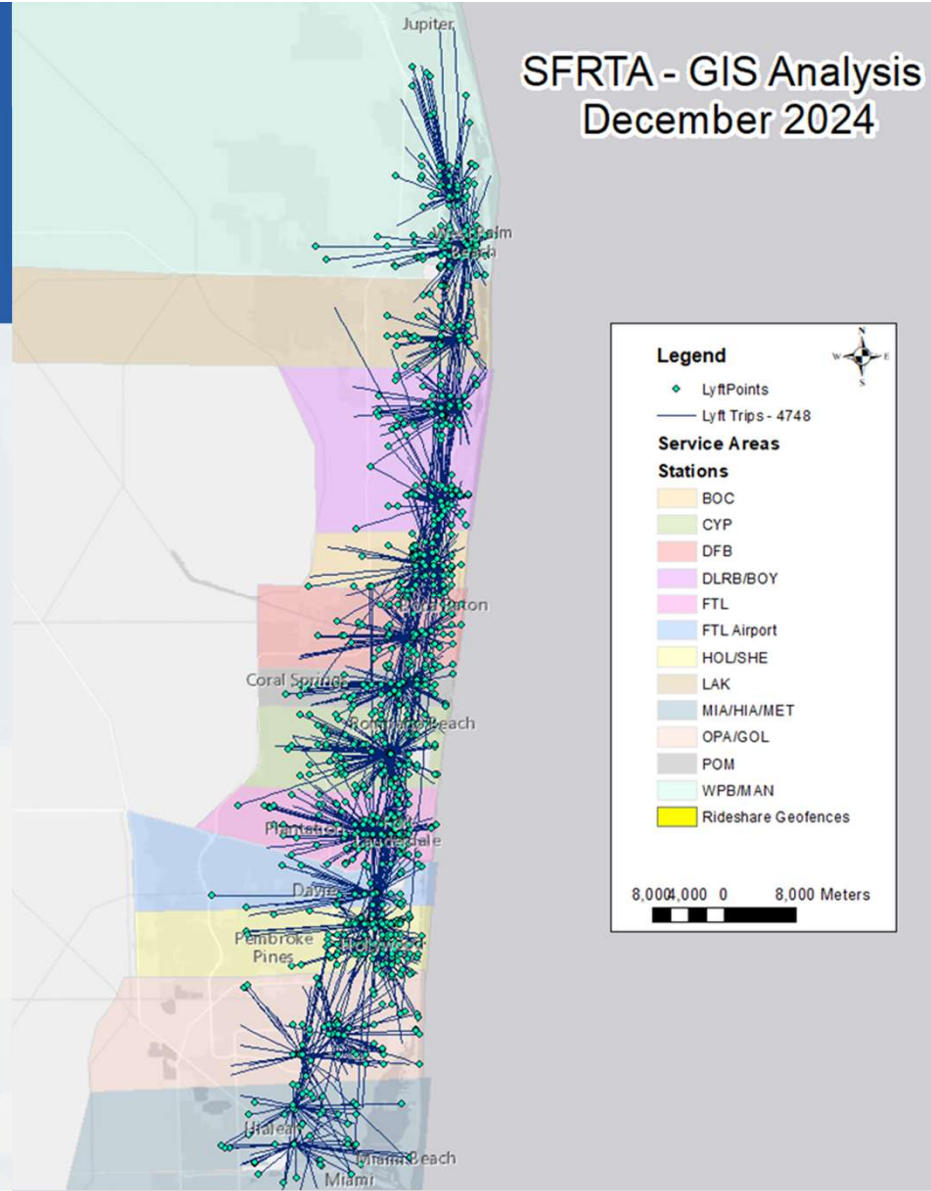
- Study for Miami-Dade Transportation Planning Organization (TPO)
- Analyzing and visualizing the costs and benefits of pedestrian and bicycle infrastructure to support better investment decision making



SFRTA: GIS RIDESHARE PROGRAM ANALYSIS



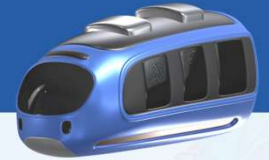
- First-Last Mile Connection partnership services with Uber, Lyft, Yellow Cab, and Metro Taxi
- Maps generated to evaluate distribution, frequency, and accumulation of rides taken within designated Tri-Rail service areas
- Historically, ride partner services have been offered across Miami-Dade, Broward, and Monroe counties
~ 17 stations
- Data files are organized, converted (X-Y / longitude - latitude), transformed (point to line data), and evaluated for analysis



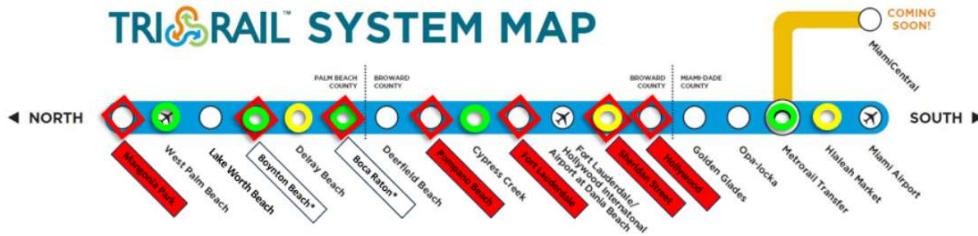
Tri-Rail Corridor TOD Residential Density Regulations



SFRTA TRANSIT ORIENTED DEVELOPMENT



TRI-RAIL SYSTEM MAP



LEGEND	
	TOD Initiatives (Underway)
	TOD Opportunities (Pending)
	TOD Regulations Outstanding
*RFPs underway, developers to address regulations	

- Identified TOD opportunities along Tri-Rail Corridor
- Developed TOD policy
- Analyzed TOD-friendly policies within municipalities around Tri-Rail stations
- Conducted outreach and engagement to support TOD initiatives
- Assisted with TOD Requests for Proposal for vacant SFRTA-owned land





CEDS BUSINESS CASE FOR AFFORDABLE HOUSING IN TOD



- **Focus:** Evaluate the impact of financial planning, transportation improvements, and land use policies on regional workforce and employer challenges..
- **Goal:** Create a roadmap to enhance accessibility and equity across South Florida.
- **Process:** Extensive stakeholder engagement through subcommittees and workshops with economic development organizations, local governments, universities, and business leaders.
- **Best Practices Research:** Expert briefings on successful national projects (Dallas TOD, Denver TOD Fund, Atlanta Beltline).
- **Completion:** Study to conclude by mid-2025.
- **Next Steps:** Host regional conference (SFRPC or TCRPC/SFRPC) to energize business community and foster support.



Research & Analysis

ECONOMIC IMPACTS OF THE NATURAL DISASTER RISK REINSURANCE PROGRAM (H.R.3525)

Rising reinsurance costs drive Florida’s soaring insurance premiums, threatening economic stability. A national reinsurance program could cut premiums, boost disposable income, and strengthen economic resilience nationwide.

By reducing reinsurance costs, the proposed program could save Florida homeowners \$1,500 annually, protect disposable income, and prevent economic out-migration. Nationwide, it would stabilize insurance markets, support homeownership, and enhance financial security.



MONEY > REAL ESTATE NEWS



Is lower reinsurance the key to lower homeowners insurance?

'Florida has not been hit with the one in 150-year event, since the great hurricane of the 1920s,' commissioner Steve Geller says



A Broward County Commissioner has proposed a plan to lower homeowners insurance by cutting reinsurance costs and the proposal is garnering attention across the state.

By: Dave Bohman

Posted 6:00 PM, Mar 15, 2024 and last updated 8:34 PM, Mar 15, 2024

WEST PALM BEACH, Fla. — A former state lawmaker has proposed a plan to lower homeowners insurance by cutting reinsurance costs, and the proposal is garnering attention across the state.

Reinsurance is really what insurance companies pay to another company that insures them in case they have to pay a sizeable amount of claims after a major storm.

HOUSING RESOURCES

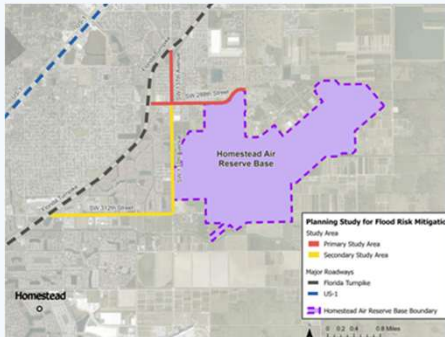
- County-by-county resources for renters facing eviction
- OUR Florida - Emergency Rental Assistance Relief Program
- Palm Beach County Department of Housing and Economic Development
- Palm Beach County Community Services
- Boca Raton
- St. Lucie County
- Martin County
- Indian River County

SEEKING SOLUTIONS

- 'Priced Out of Paradise' town hall
- 'Coverage Collapse' town hall
- 'Coverage Collapse'

SF MIRR PHASE 2: PROJECT IMPLEMENTATION

At Homestead ARB, roadways SW 288th ST and SW 137th AVE are designated Special Flood Hazard Areas. Improved accessibility between these roadways will assist in connecting base and resident access to evacuation routes.



Homestead ARB helps support:

1. North American Air Defense Command Operation alert site for air defense of the southeastern U.S.
2. Contingency operations for U.S. Southern Command
3. Rapid deployment capability of the Coast Guard's Maritime Safety and Security Team
4. Air operations for the Customs and Border Protection

Homestead Air Reserve Base

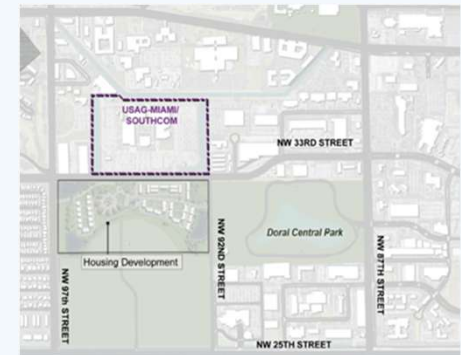


One of the highest priority projects identified for the SFOMF regards its deteriorating seawall and bulkheads located along the southern entrance into Port Everglades. The potential damage to the facility in the event of a storm would impact the ability of the SFOMF to conduct its mission as well as disrupt vital communication infrastructure with Naval Station Guantanamo Bay. Furthermore, the bulkhead protects a material corrosion test pad, which allows the Navy to perform advanced testing of material susceptibility in water and air.



South Florida Ocean Measurement Facility

At USAG-M/SOUTHCOM, an off-base housing project has been proposed for an adjacent parcel. However, despite proximity, mobility between the housing development and SOUTHCOM is hindered by highly trafficked roadways with limited pedestrian infrastructure.



Pedestrian and mobility improvements will provide mission-critical senior leaders with rapid access to the headquarters in times of crisis action team activation or other response operations.

US Army Garrison-Miami / US Southern Command



CLEAN CITIES

Hosted Key Trainings & Events

- Southeast Regional Cities Meeting (Feb 2023)
- School bus firefighter training (MCleanay 2023)
- Tri-County Alternative Fuel First Responder Training (Dec 2023)
- National Fire Prevention Training in Coral Gables (Mar 2024)
- Featured in City Furniture’s Green City Summit (July 2024)

Expansion & Funding

- DOE Southeast Expansion Grant (2024)
- Funding from NREL to secure a new host for Central Florida Clean Cities Coalition (2024)

Major Recognitions & Awards

- Four-Year DOE Re-Designation (\$452K, Feb 2023)
- AliceAnn Wohlbruck Award (2022, 2024)
- Greatest Energy Use Impact Award (2023)
- Clean Fuels Impact Award (2024)
- Benjamin Watson Leadership Award (2024)

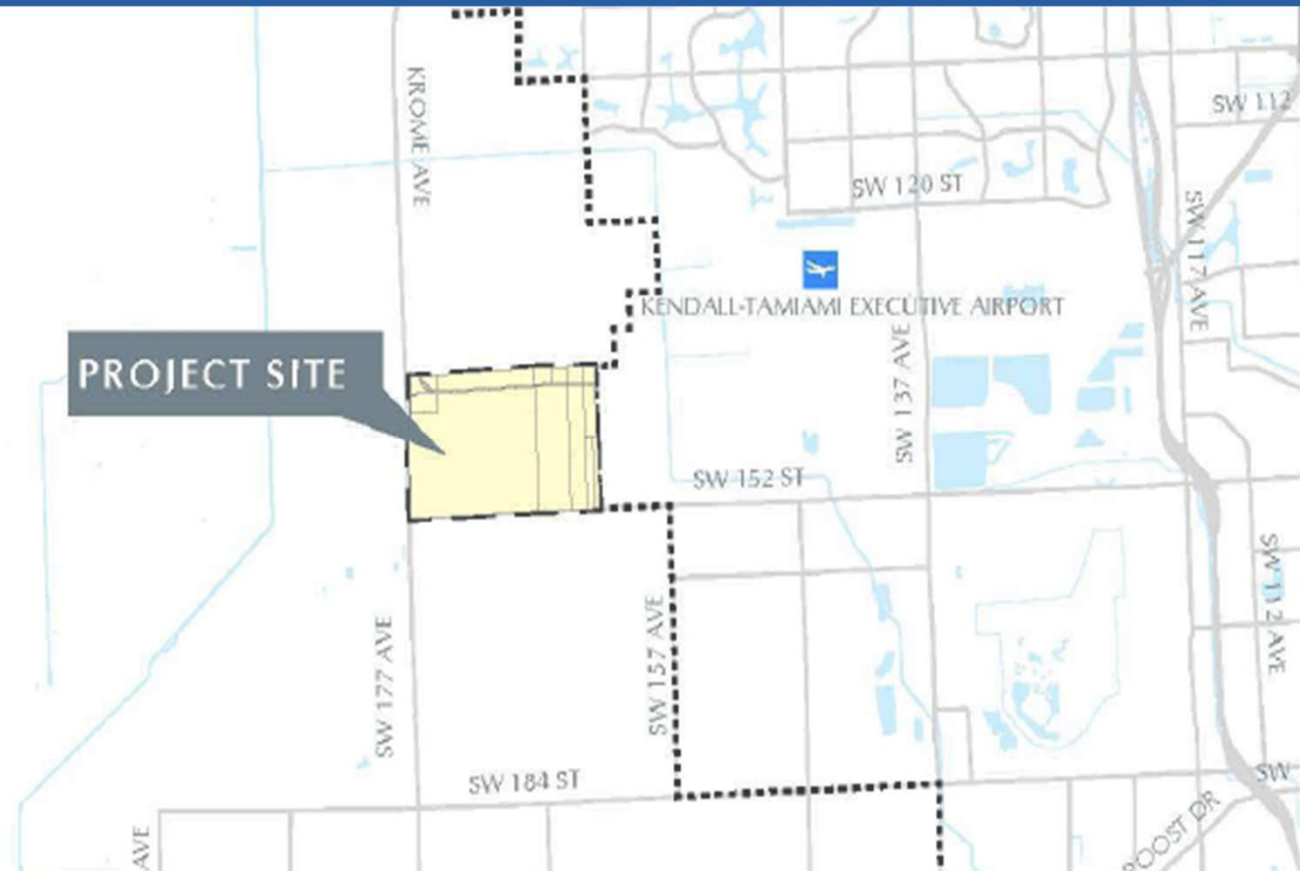
Other Key Initiatives

- Featured in Joint DOE Webinar on EV permitting (Feb 2024)
- Launched new Clean Cities & Communities Logo (Feb 2024)



DEVELOPMENT OF REGIONAL IMPACT (DRI) REVIEW – CITY PARK

- Location: West of the Miami Executive Airport in West Kendall, Miami-Dade County (Bounded on the north by SW 136 Street, on the east by SW 162 Avenue, on the south by SW 152 Street and on the west by Krome Avenue)
- Acreage: 953.7 acres of Agricultural land
- Current status: Finalizing Agreement on Methodology to Assess Regional Impacts
- Next steps: Analysis of impacts will be submitted by applicant to be reviewed by the Council





REVOLVING LOAN FUNDS

\$61.5 Million Loaned

2,500 Jobs Saved

\$123.1 Million Leveraged

2,500 Jobs Created Since 2005

Loans from \$50,000 to \$500,000

Flexible terms and competitive rates for existing businesses located in Broward, Miami-Dade and Monroe counties

- Machinery and equipment purchases
- Inventory purchases
- Working capital needs
- Land and building purchases/renovations
- Leasehold improvements

Growing South Florida's economy one business at a time.



SUCCESSFUL CLIENTS



BROWNFIELDS

To date, the SFRPC has raised and committed more than **\$8,450,000** to assist **eight (8) projects** throughout the South Florida region, including Palm Beach, Broward, Miami-Dade, and Monroe counties. These funds have enabled the SFRPC's Brownfields Clean Up Revolving Loan Fund to help transform the following projects.

2024/2025 Project Highlights

The SFRPC's Brownfields Revolving Loan Fund was awarded a **\$4,500,000 EPA Supplemental RLF Grant** to help extend the capacity of the program to provide funding to cleanup the most underserved and significantly disadvantaged communities in our region.



BROWNFIELDS REVOLVING LOAN FUND

The Brownfields Revolving Loan Fund (RLF) facilitates the transformation of vacant, under-utilized and underperforming sites into viable and valuable community assets by providing low-interest loans to developers, non-profits, and local governments for site cleanup.



Funding Redevelopment and Reinvesting in South Florida

The South Florida Regional Planning Council makes EPA funded loan-money available for site remediation and subsequent redevelopment. The SFRPC has been participating in Brownfield assessment, cleanup, and redevelopment since 2001.

Park Road/Former Hollywood Incinerator Ash Dump (Hollywood, FL – Broward County)

The Park Road redevelopment will result in the construction of 315 multi-family rental units, 40,000 sqft of commercial intended for a grocery store plus 31,000 sqft of retail commercial space. The estimated investment (leverage) is \$71 million.

Claude Pepper Park (Miami, FL – Miami Dade County)

This multi-family redevelopment is named after the adjacent public park featuring two basketball courts, 12 tennis courts and three softball/baseball diamonds. Following the cleanup of an 11-acre former rock quarry, this redevelopment will construct 1,568 multi-family affordable rental units plus 180,000 sqft of retail/office space. The estimated investment (leverage) is \$750 million.

Former Baltuff Dump (Middle Torch Key, FL – Monroe County)

The SFRPC in conjunction with the Habitat for Humanity of Key West will assist in securing a targeted brownfields assessment grant to assist with environmental assessment of the contaminated site.





SOUTH FLORIDA LOCAL EMERGENCY PLANNING COMMITTEE (SoFlaLEPC)

Staff

Coordinates regularly scheduled LEPC meetings

Conducts How-to-Comply seminars

Answers public inquiries regarding Emergency Planning and Community Right-To-Know Act (EPCRA) compliance

Maintains the chemical inventories for public inspection consistent with the Community Right-to-Know provisions of Emergency Planning and Community Right-To-Know Act (EPCRA)

Promotes hazardous materials awareness, and prepares and updates the comprehensive emergency response plan for the Region

In January 2025, utilized United States Department of Transportation Hazardous Materials Emergency Preparedness (HMEP) Grant funds to conduct low cost or no cost hazardous material response training for public sector emergency responders from Southeast Florida at the Florida Hazardous Materials Symposium





EXTERNAL BOARDS

Resiliency and Risk Tech Hub - Council staff engages in weekly steering committee and collaborative sessions to advance grant work.

South Florida Regional Transportation Authority (SFRTA)

Planning Technical Advisory Committee (PTAC) - Council staff engages in quarterly meetings to provide technical input to the SFRTA planning process.

Southeast Florida Transportation Council (SEFTC) **Regional Transportation Technical Advisory Committee (RTTAC)** - Council staff engages in monthly meetings to provide technical input to the SEFTC regional planning process.

Broward Metropolitan Planning Organization (MPO) - **SS4A Safety Action Plan Steering Committee**

Miami-Dade Transportation Planning Organization (TPO) - **Long Range Transportation Plan (LRTP) Steering Committee**

The **Coordinating Council of Broward** - Council staff participates in monthly meetings, supporting its mission to unite government, business, and nonprofit leaders in the advocacy and coordination of health and human services in Broward County.

Southeast Florida Climate Change Compact Steering Committee - Council staff contributes to regional climate resilience planning.

Broward County Climate Change Task Force - Council staff supports local climate initiatives and sustainability efforts.

Broward County Water Advisory Board Technical Assistance Committee - Council staff provides technical input on water resource planning.



THANK YOU! QUESTIONS?

