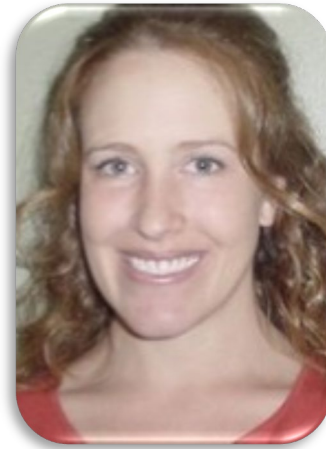


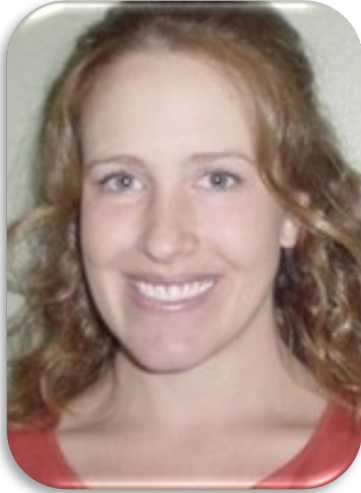
**COUNCIL GUESTS**

Jennifer L. Jurado, Ph.D.  
Deputy Director & Chief Resilience Officer  
Resilient Environment Department  
Broward County



Kimberly Brown, AICP  
Resilience Planning Director  
Office of Resilience  
Miami-Dade County

## COUNCIL GUESTS



**Kimberly Brown, AICP** serves as Director of Resilience Planning in the Miami-Dade County Office of Resilience. Her experience has spanned both private and public sector work including more than fifteen years with Miami-Dade County. During that time, she has worked on a variety of land use and environmental efforts including facilitation of the seven-year review and update of the County's Comprehensive Plan. Currently, her work focuses on the advancement of resilience initiatives that allow the County to adapt and thrive in the face of climate-related threats. Ms. Brown also serves as Miami-Dade County's representative on the Southeast Florida Regional Climate Change Compact Leadership Committee. She holds a Master of Arts degree in Urban and Regional Planning from the University of Florida and professional certification by the American Institute of Certified Planners (AICP).



**Jennifer Jurado, Ph.D.** is the Chief Resilience Officer and Deputy Director of Broward County's Resilient Environment Department. Dr. Jennifer Jurado is responsible for leading climate resilience and environmental planning initiatives for Broward County, FL. Areas of particular focus include sea level rise adaptation, sustainable water resource management, shoreline protection, coastal resource conservation, and clean energy projects. She works extensively with internal and regional stakeholders to advance county-wide resilience planning informed by future conditions scenarios, including resilient infrastructure design standards and redevelopment strategies, and fosters public-private partnerships key to large-scale initiatives. Current priorities involve the application of climate information and economic risk assessments to inform a basin-level county-wide resilience plan. Dr. Jurado has been a participant in the four-county Southeast Florida Regional Climate Change Compact since its formation in 2009. She serves on the board of directors for the American Society of Adaptation Professionals and the American Geophysical Union's Thriving Earth Exchange. She earned her Ph.D. from the University of Miami in Marine Biology and Fisheries.

Serving Broward, Miami-Dade, and Monroe counties