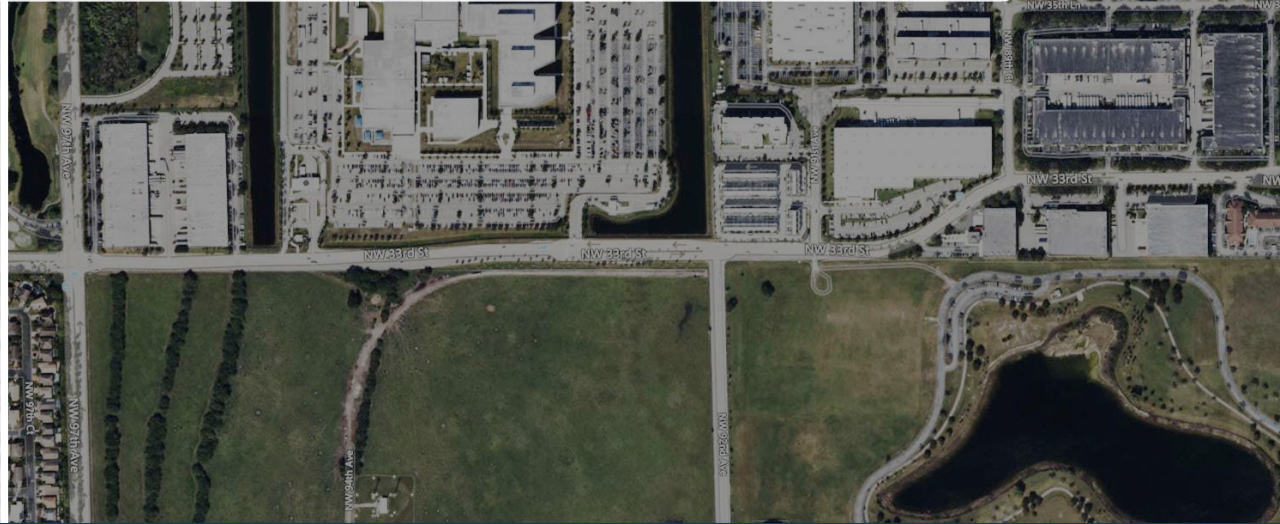


South Florida Military Installation Resilience Review: *Mission Assurance through Community Resilience*



MISSION ASSURANCE THROUGH COMMUNITY RESILIENCE

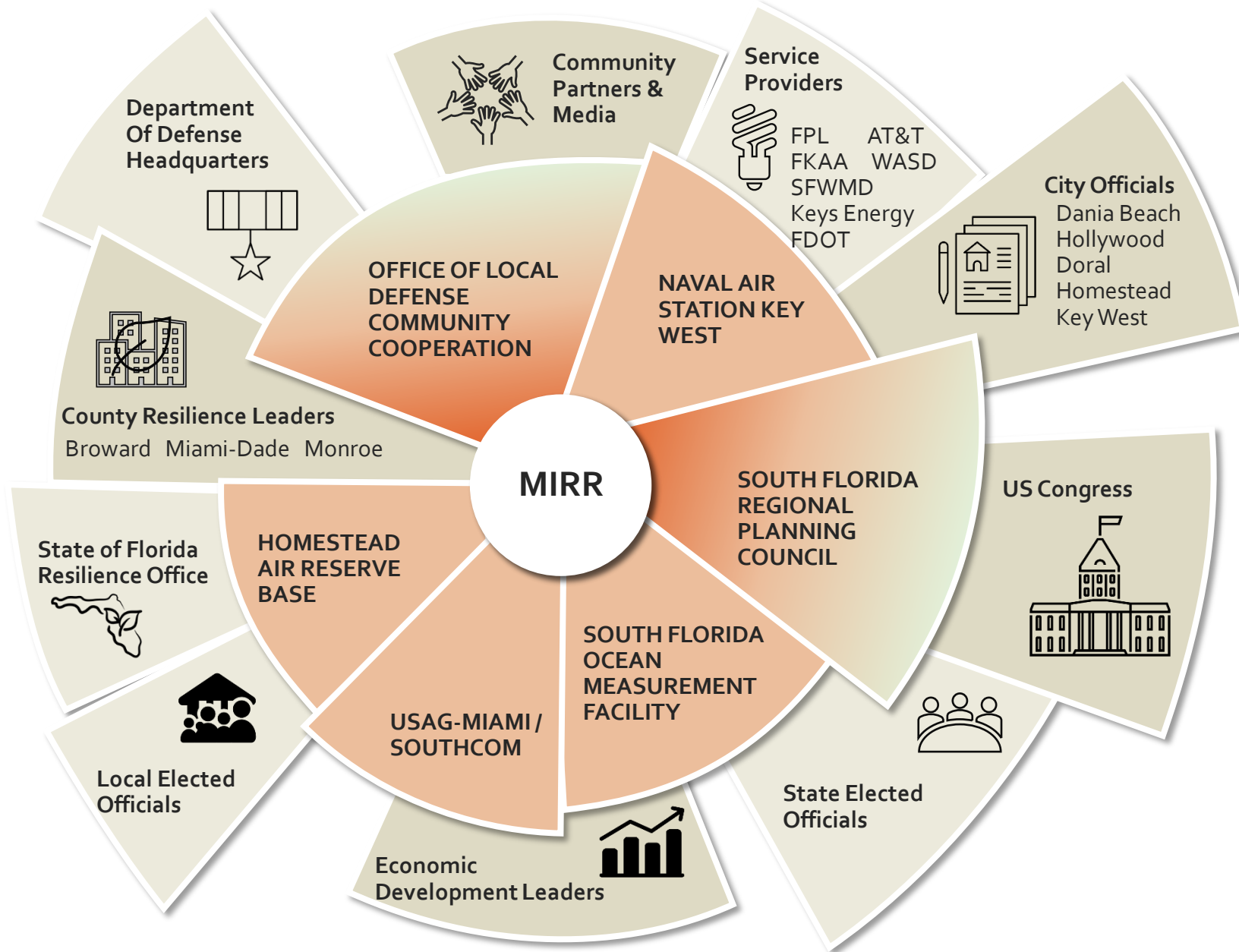
Protect and preserve military readiness and defense capabilities through funded interventions to supporting infrastructure



Improve the public health, safety and general welfare of those living and working at or near the installations through implementable, maintainable interventions

Increase public awareness of the military missions through closer communications and interventions that are integrated with ongoing community resilience planning

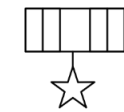
ADAPTATION: LEVERAGING LOCAL EFFORTS



Identify & Align Projects to Optimize Funding

- ❖ Capital Improvement Plans
- ❖ Comprehensive Development Master Plans
- ❖ Long Range Transportation Plans
- ❖ Local Mitigation Strategies
- ❖ Adaptation Studies
- ❖ Resilience Strategies & Plans

STAKEHOLDER ENGAGEMENT & REGIONAL COOPERATION



Department Of Defense
Headquarters



State Elected
Officials



County Resilience
Leaders



City Officials



State of Florida
Resilience Office



US Congress



Local Elected
Officials



Service
Providers

Community
Partners & Media

Economic Development
Leaders

South Florida Regional Planning Council

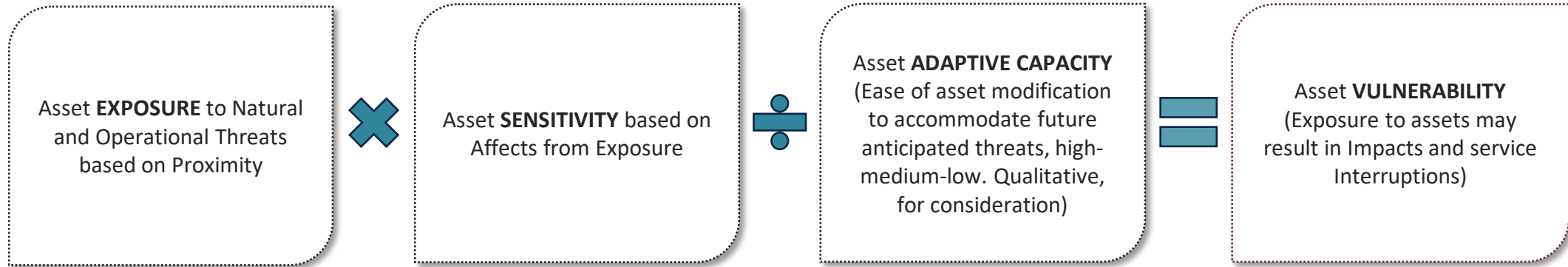
STAKEHOLDER WORKSHOP INPUT

COMMON VULNERABILITIES

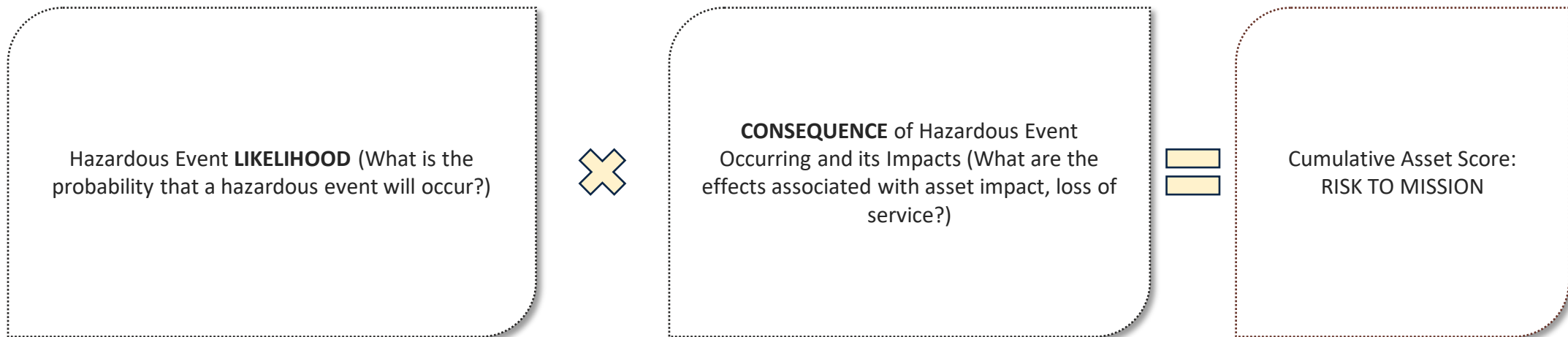
	Common Vulnerabilities												
	Stress											Shock	
	Dependencies		Transportation		Power	Climate Change		Housing/Zoning		Ecosystems		Disaster	
	Lack of fuel (post-disaster)	Supply chain	Road flooding	Single entrance access points	Electric supply	Extreme heat	Sea level rise	Encroachment	Housing costs	Shoreline erosion	Invasive species damage	Turkey Point nuclear incident	Runway/road flooding
SFOMF													
Core Mission Asset (Underwater Cables)										X			
All Others			X	X	X	X	X	X		X	X		X
USAG													
Core Mission Asset (C3 - Command Control Communications)					X								
All Others	X		X			X		X	X			X	
HARB													
Core Mission Asset (Airfield)													X
All Others	X		X		X	X	X	X	X			X	
NASKW													
Core Mission Asset (Airfield)							X			X			X
All Others	X	X	X	X	X	X		X	X	X	X		



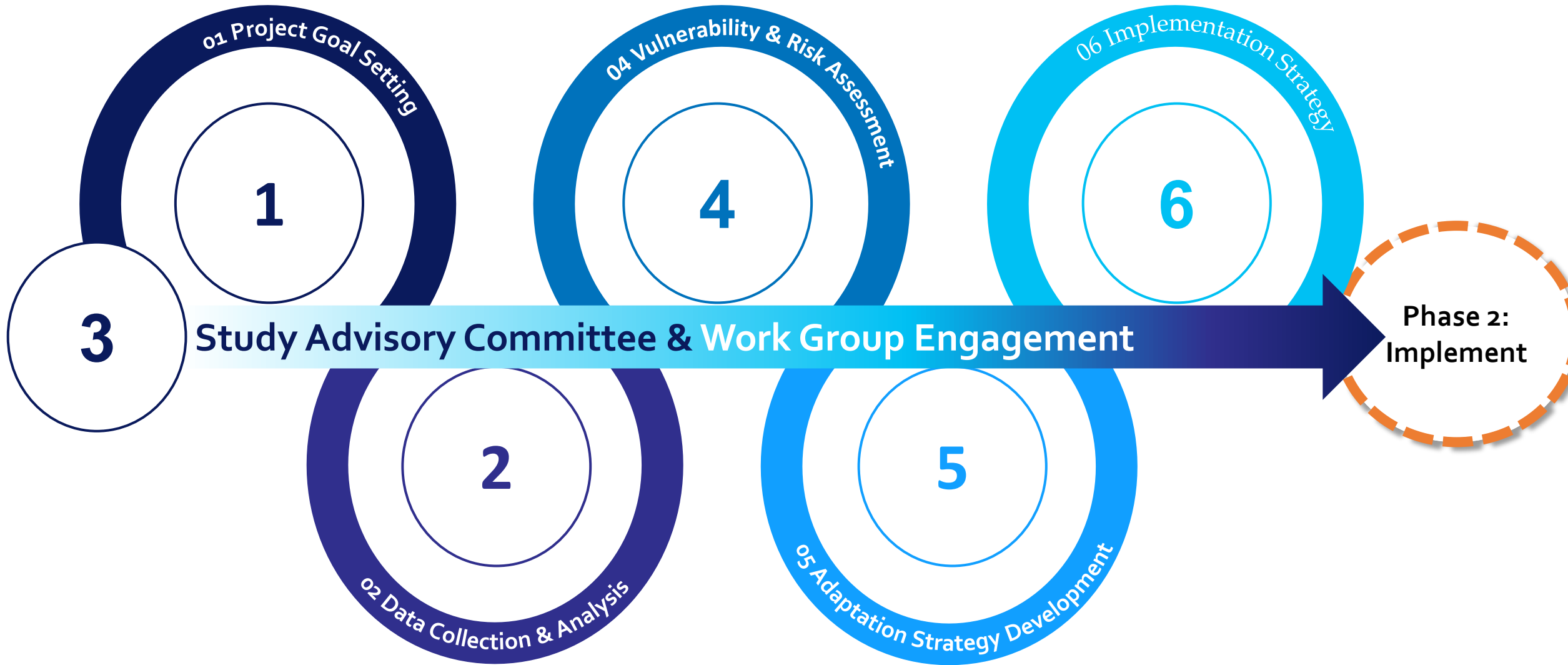
DETERMINING VULNERABILITY & RISK IN A STATE APPROVED PROCESS



Once vulnerable assets are identified, a risk score is calculated for those vulnerable assets.



PLANNING → IMPLEMENTATION



ADAPTATION PROJECTS



Joint Participation Agreement



Shoreline Protection



Roadway Improvements



Resilient Utilities



Right-of-Way (ROW) Improvements



Attainable Housing



Opportunity: Resilience Hub



Water & Wastewater Utilities



Land Management