



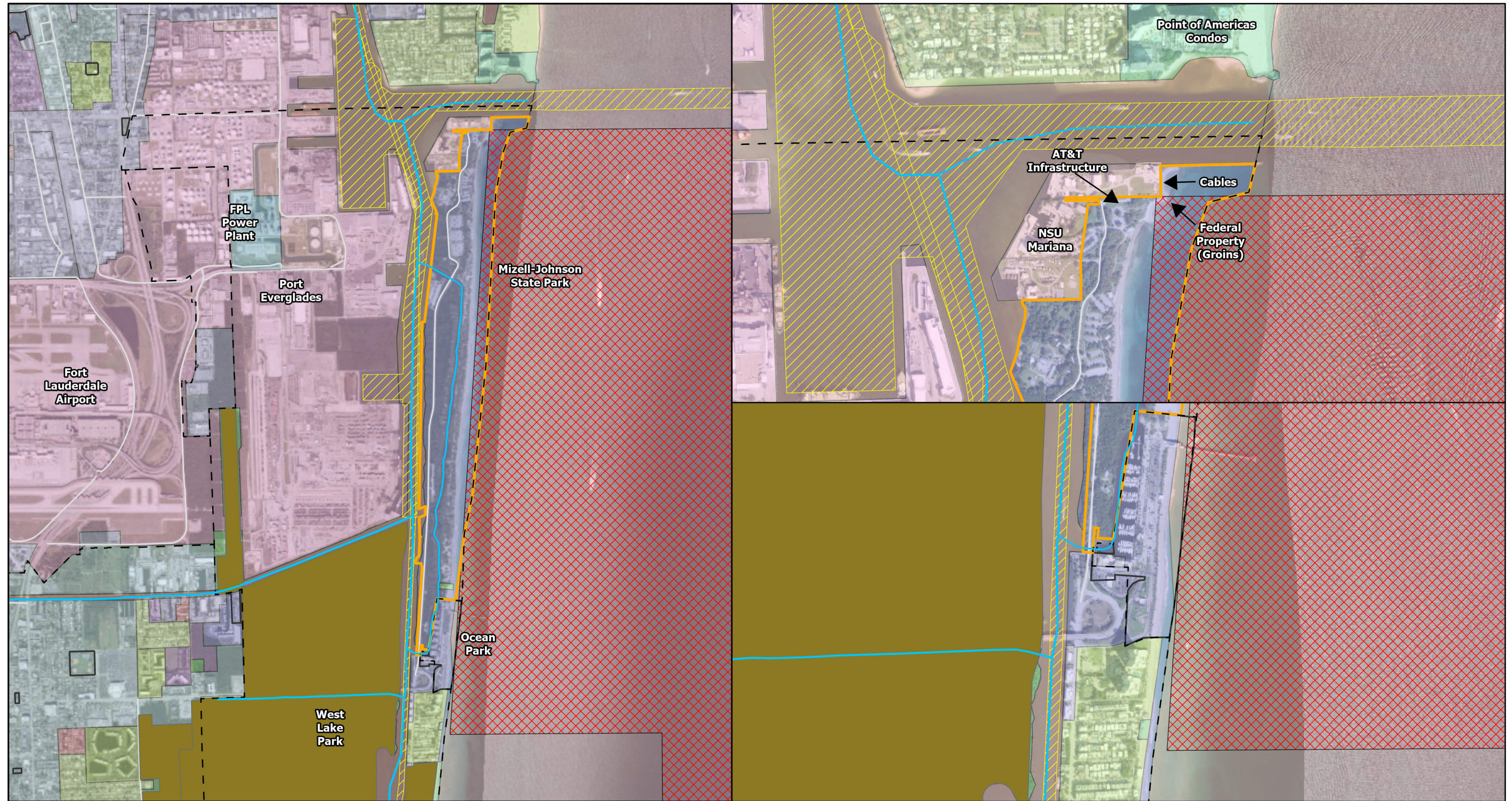
Appendix C  
Study Area Asset  
and Hazard Maps

*Maritime Messaging*  
Photo by Navy Seaman Joshua Sapien

## C. STUDY AREA ASSET AND HAZARD MAPS

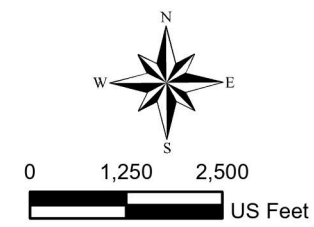
---

*This page intentionally left blank.*



**Legend:**

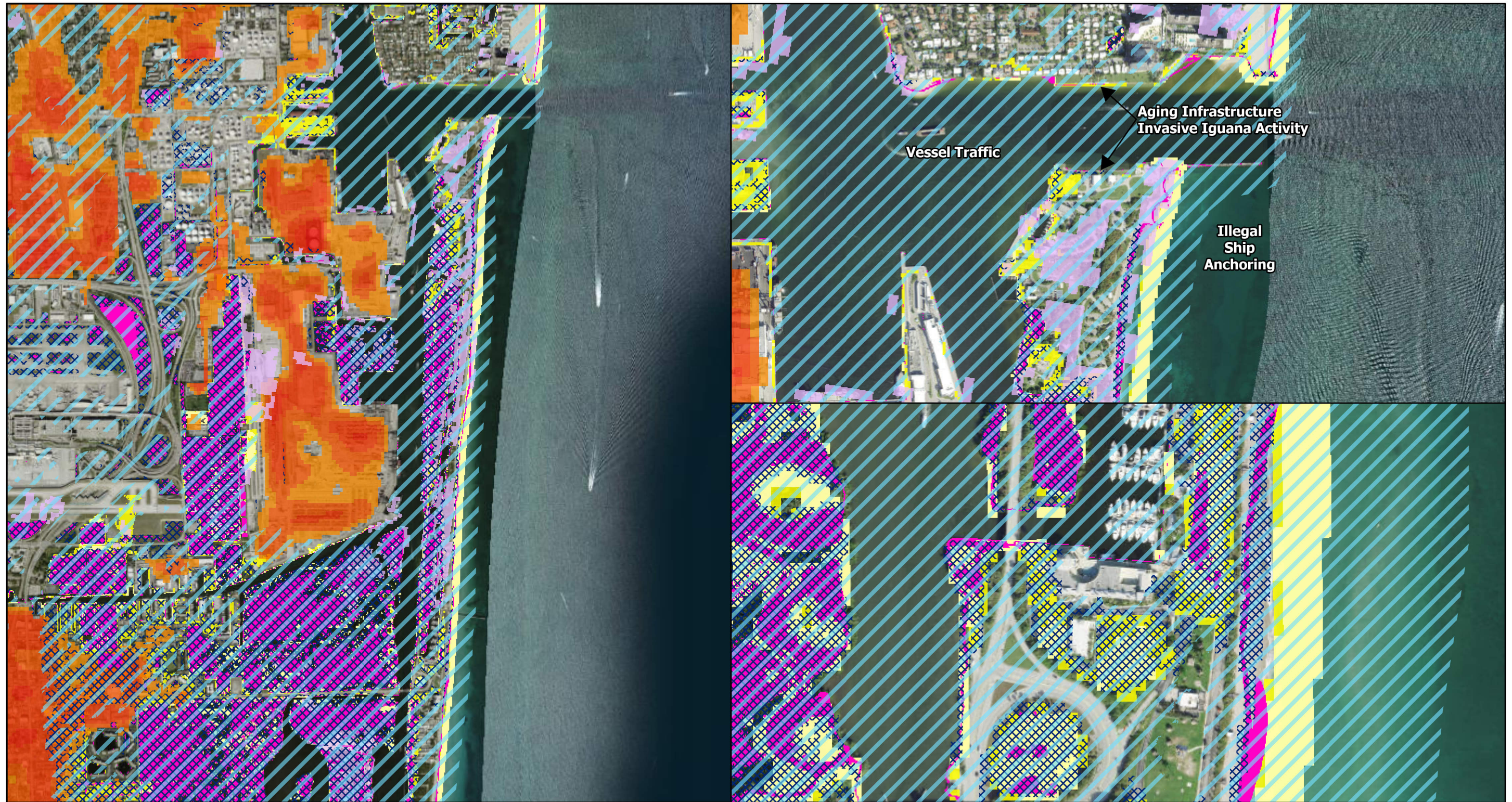
- |               |                         |                   |    |    |     |
|---------------|-------------------------|-------------------|----|----|-----|
| Canal/Ditch   | City Park               | Future LandUse 28 | 33 | 39 | 110 |
| State Roads   | State Park              | 1                 | 29 | 34 | 40  |
| County Roads  | City Boundary           | 5                 | 30 | 36 | 60  |
| Local Roads   | US Navy Restricted Area | 10                | 31 | 37 | 70  |
| USACE Channel |                         | 15                | 32 | 38 | 100 |
|               |                         | 20                |    |    | 222 |



**Title:** 2022 SFL Military Installation Resilience Infrastructure and Land Use Context Map  
 South Florida Ocean Measurement Facility (SFOMF)  
 Broward County

**APTIM** 6401 Congress Avenue, Suite 140  
 Boca Raton, FL 33487  
 APTIM.com

Date: 09/08/22 Drawn By: HMV Commission No.: 631023769 **SFOMF**



**Notes:**

1. Background is ERSI's Imagery basemap.

**Legend:**

2070 NOAA Intermediate High Sea Level Rise

1% Annual Chance Flood Hazard

**Wildfire Hazard Potential**

Very Low

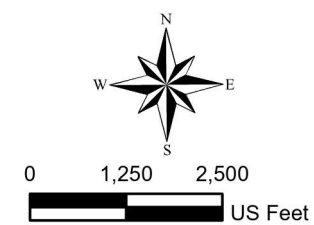
Very High

Category 1 MOM Inundation

Category 3 MOM Inundation

**Urban Heat Island Severity for U.S. cities - 2019**

King Tide Flooding (<2.3')



**Title:**

2022 SFL Military Installation Resilience  
Threats and Hazards Context Map  
South Florida Ocean Measurement Facility (SOFOM)  
Broward County



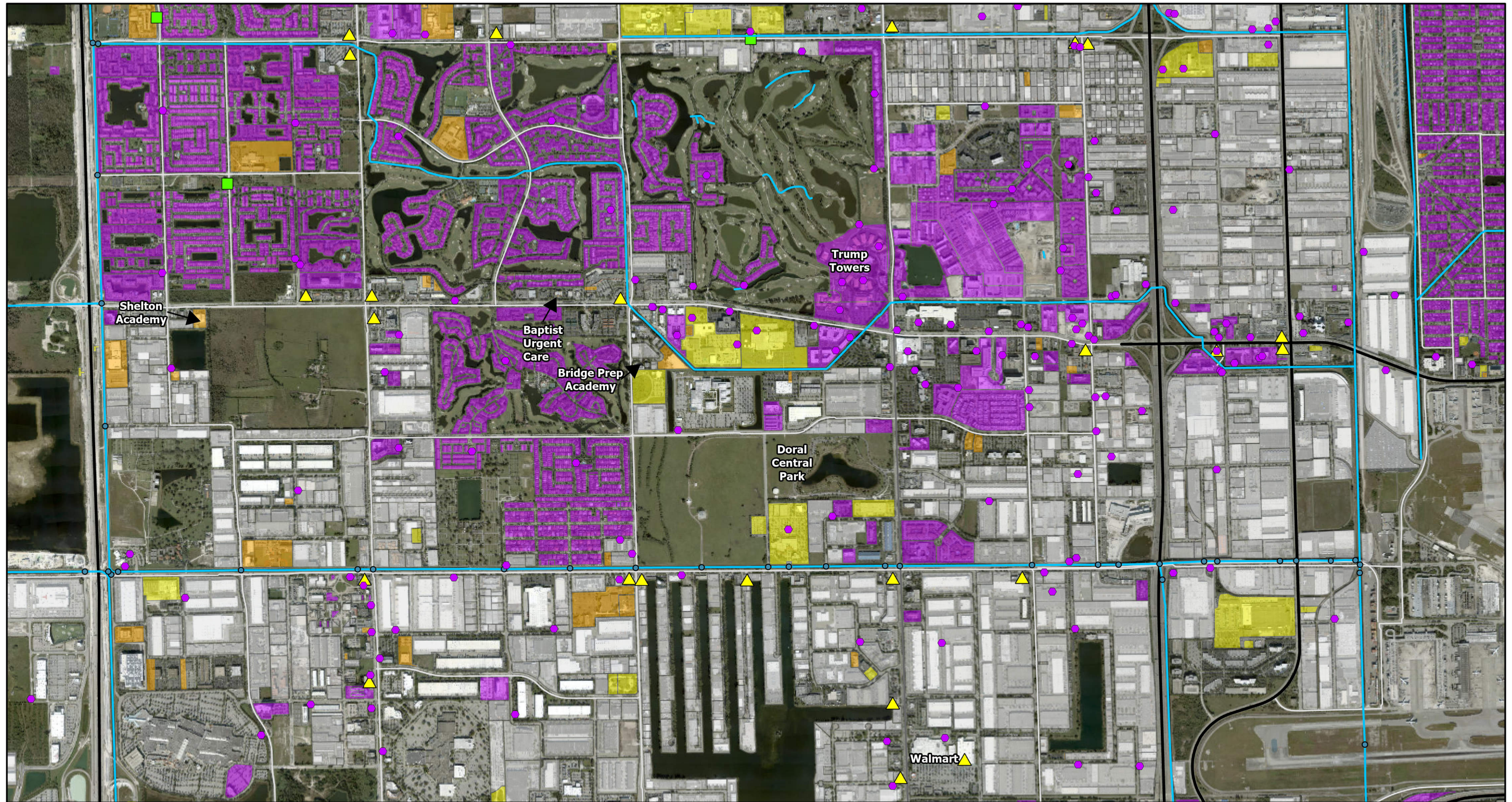
6401 Congress Avenue, Suite 140  
Boca Raton, FL 33487  
APTIM.com

Date: 09/08/22

Drawn By: HMV

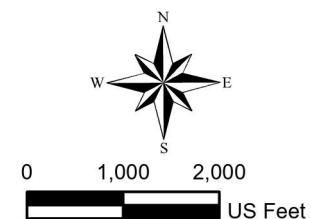
Commission No.:  
631023769

**SFOMF**



**Legend:**

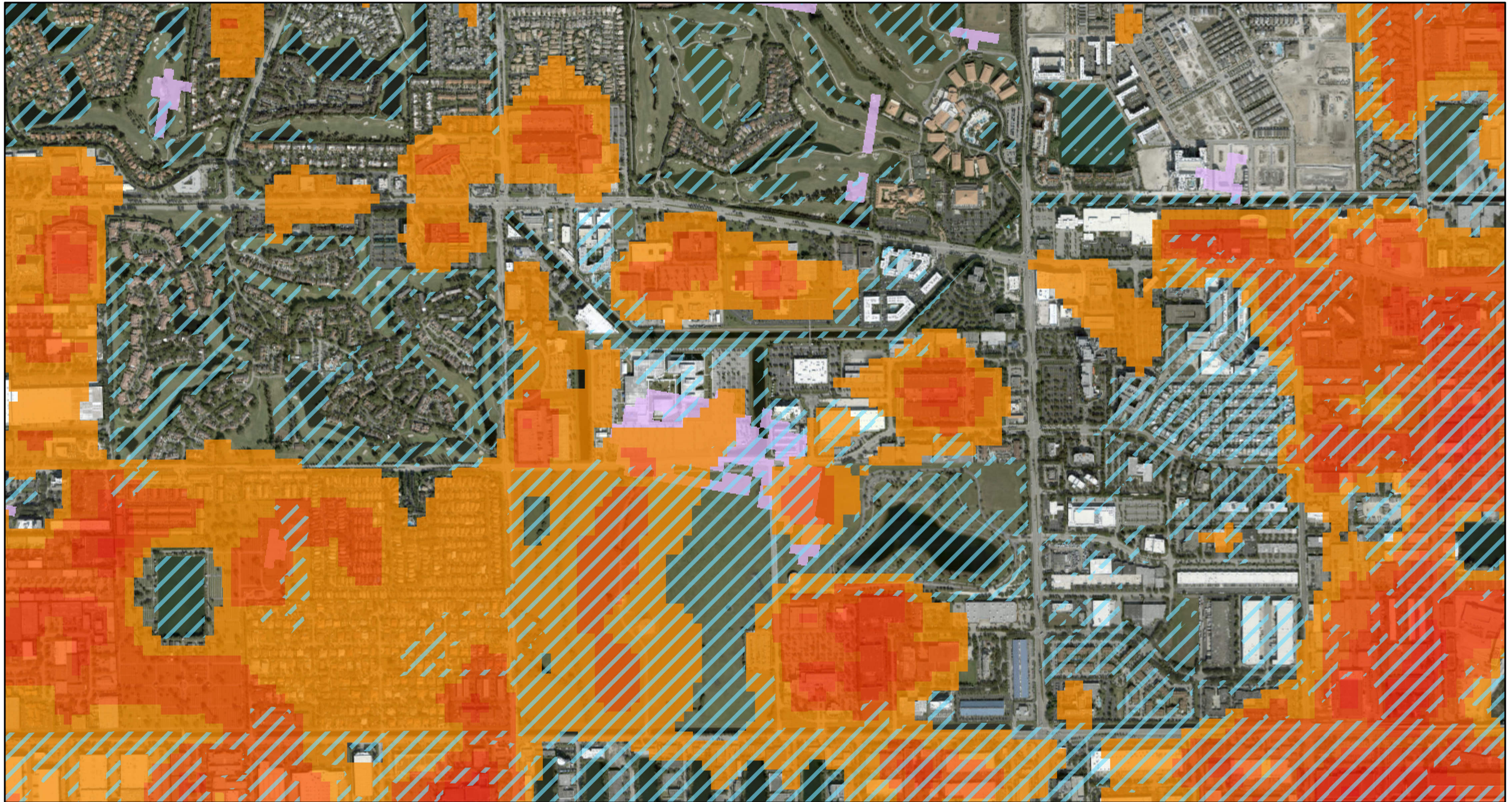
- |                                    |                           |
|------------------------------------|---------------------------|
| National Shelter System Facilities | Local Roads               |
| Sanitary Sewer Pump Station        | Education                 |
| Gas Station                        | Governmental/Public Admin |
| CULVERT                            | Industrial                |
| Canal/Ditch                        | Residential               |
| State Roads                        |                           |
| County Roads                       |                           |



Title: 2022 SFL Military Installation Resilience Infrastructure and Land Use Context Map  
 United States Army Garrison-Miami (USAG-Miami)  
 Miami-Dade County

**APTIM** 6401 Congress Avenue, Suite 140  
 Boca Raton, FL 33487  
 APTIM.com

Date: 09/08/22 Drawn By: H MV Commission No.: 631023769 **USAG-MIAMI**

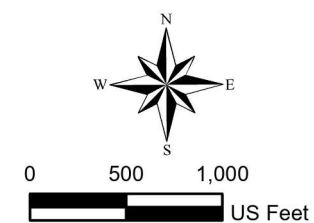


**Notes:**

1. Background is ERSI's Imagery basemap.
2. Category 1 & 2 MOM Inundation doesn't reach this installation.

**Legend:**

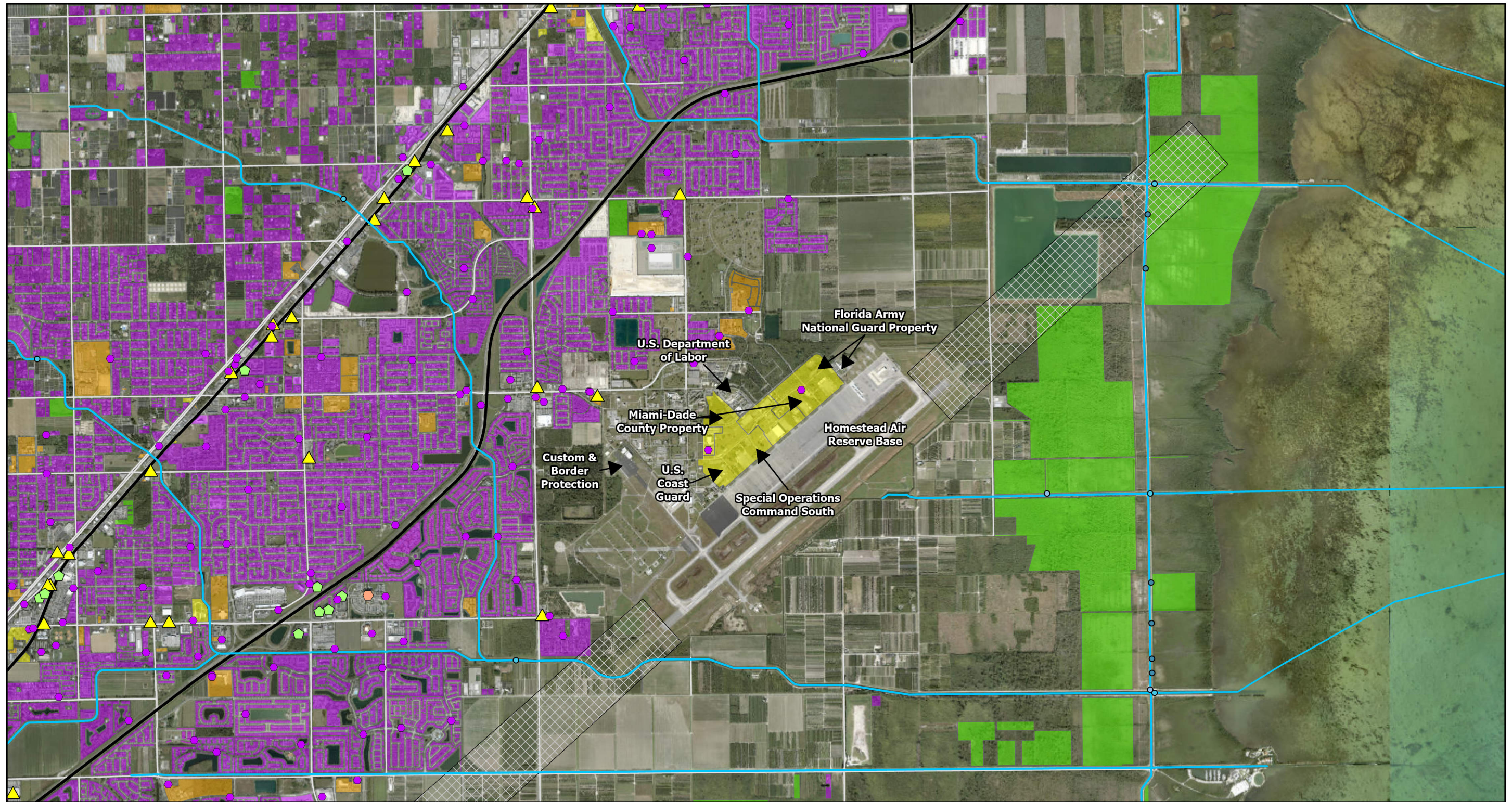
- 1% Annual Chance Flood Hazard
- Wildfire Hazard Potential Very Low
- Urban Heat Island Severity



**Title:** 2022 SFL Military Installation Resilience Threats and Hazards Context Map  
 United States Army Garrison-Miami (USAG-MIAMI)  
 Miami-Dade County

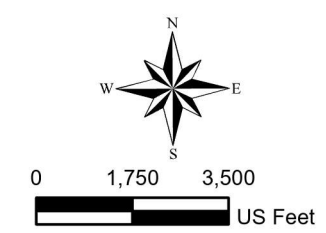
**APTIM** 6401 Congress Avenue, Suite 140  
 Boca Raton, FL 33487  
 APTIM.com

Date: 09/08/22 Drawn By: HMV Commission No.: 631023769 **USAG-MIAMI**



**Legend:**

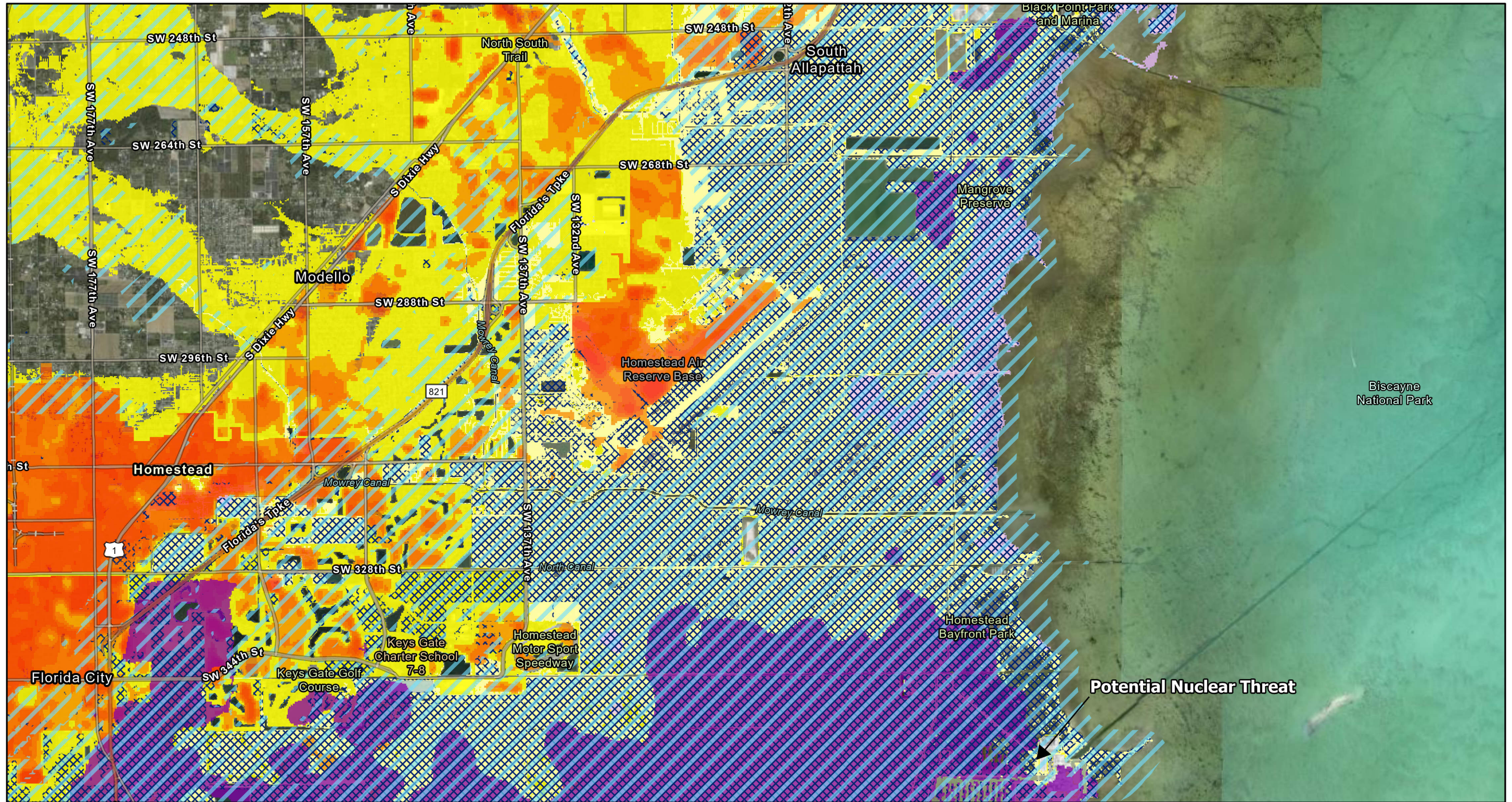
- |                             |             |                             |                                 |
|-----------------------------|-------------|-----------------------------|---------------------------------|
| Hospital                    | State Roads | Education                   | Approximate Compatible Use Zone |
| Gas Station                 | Culvert     | Governmental/Public Admin   |                                 |
| Sanitary Sewer Pump Station | Pump        | Industrial                  |                                 |
| Hotel                       | Spillway    | Residential                 |                                 |
| Local Roads                 | Canal/Ditch | Conservation/Preserve Areas |                                 |



**Title:** 2022 SFL Military Installation Resilience Infrastructure and Land Use Context Map  
Homestead Air Reserve Base (HARB)  
Miami-Dade County

**APTIM** 6401 Congress Avenue, Suite 140  
Boca Raton, FL 33487  
APTIM.com









Date: 09/08/22	Drawn By: HMV	Commission No.: 631023769	<b>HARB</b>
----------------	---------------	---------------------------	-------------

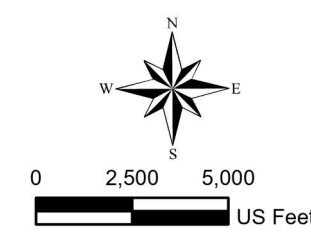


**Notes:**

1. Background is ERSI's Imagery basemap.

**Legend:**

-  2070 NOAA Intermediate High Sea Level Rise
-  1% Annual Chance Flood Hazard
-  Category 1 MOM Inundation
-  Category 3 MOM Inundation
-  Wildfire Hazard Potential
-  Very Low
-  Very High
-  Urban Heat Island Severity



**Title:** 2022 SFL Military Installation Resilience Threats and Hazards Context Map  
Homestead Air Reserve Base (HARB)  
Miami-Dade County

**APTIM** 6401 Congress Avenue, Suite 140  
Boca Raton, FL 33487  
APTIM.com

Date: 09/08/22 Drawn By: HMV Commission No.: 631023769 **HARB**





**Notes:**

1. Background is ERSI's Imagery basemap.
2. Florida Key's National Marine Sanctuary is entire water area on map.

**Legend:**

- |                            |                    |            |                |                    |                     |               |
|----------------------------|--------------------|------------|----------------|--------------------|---------------------|---------------|
| ○ Airfield                 | ○ EMS              | ○ Hospital | ○ Water        | ▭ Navy Property    | ▨ USACE Channel     | — Navy Mains  |
| ○ Alternate EOC            | ○ EMS /Village EOC | ○ School   | ★ Anchorages   | ▭ City Property    | — Transmission Main | ▭ Plant Sites |
| ○ Communication            | ○ EOC              | ○ Shelter  | — State Roads  | ▭ County Property  | ■ Navy Lift Station | ▭ Fuel Tanks  |
| ○ DMS                      | ○ Energy           | ○ Staging  | — County Roads | ▭ State Property   | — Navy LPS Main     |               |
| ○ Disaster Recovery Center | ○ Fire             | ○ Waste    | — Local Roads  | ▭ City of Key West | — Navy Force Main   |               |

**Title:**

2022 SFL Military Installation Resilience  
Infrastructure and Land Use Context Map  
Naval Air Station Key West (NAS Key West)  
Monroe County



**APTIM**

6401 Congress Avenue, Suite 140  
Boca Raton, FL 33487  
APTIM.com

Date: 09/08/22

Drawn By: HMV

Commission No.:  
631023769

**NASKW**

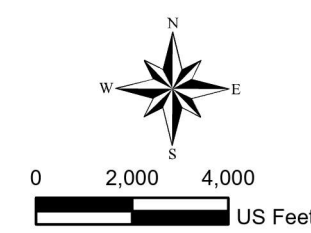


**Notes:**

1. Background is ERSI's Imagery basemap.
2. Entire area is within the 1% Annual Chance Flooding Hazard.

**Legend:**

- Navy Property
- 2070 NOAA Intermediate High Sea Level Rise
- Category 3 MOM Inundation
- King Tide <2.3'
- Wildfire Hazard Potential Very Low
- Category 1 MOM Inundation
- Urban Heat Island Severity for U.S. cities - 2019



Title: 2022 SFL Military Installation Resilience Threats and Hazards Context Map  
 Naval Air Station Key West (NAS Key West)

Monroe County  
 6401 Congress Avenue, Suite 140  
 Boca Raton, FL 33487  
 APTIM.com

**APTIM**

Date: 09/08/22	Drawn By: HMV	Commission No.: 631023769	<b>NASKW</b>
----------------	---------------	---------------------------	--------------