



September 7, 2023

Creating a Bright Mobility Future for Every Generation

2023 Florida Planning Conference
Jacksonville, Florida



Gail M. Holley

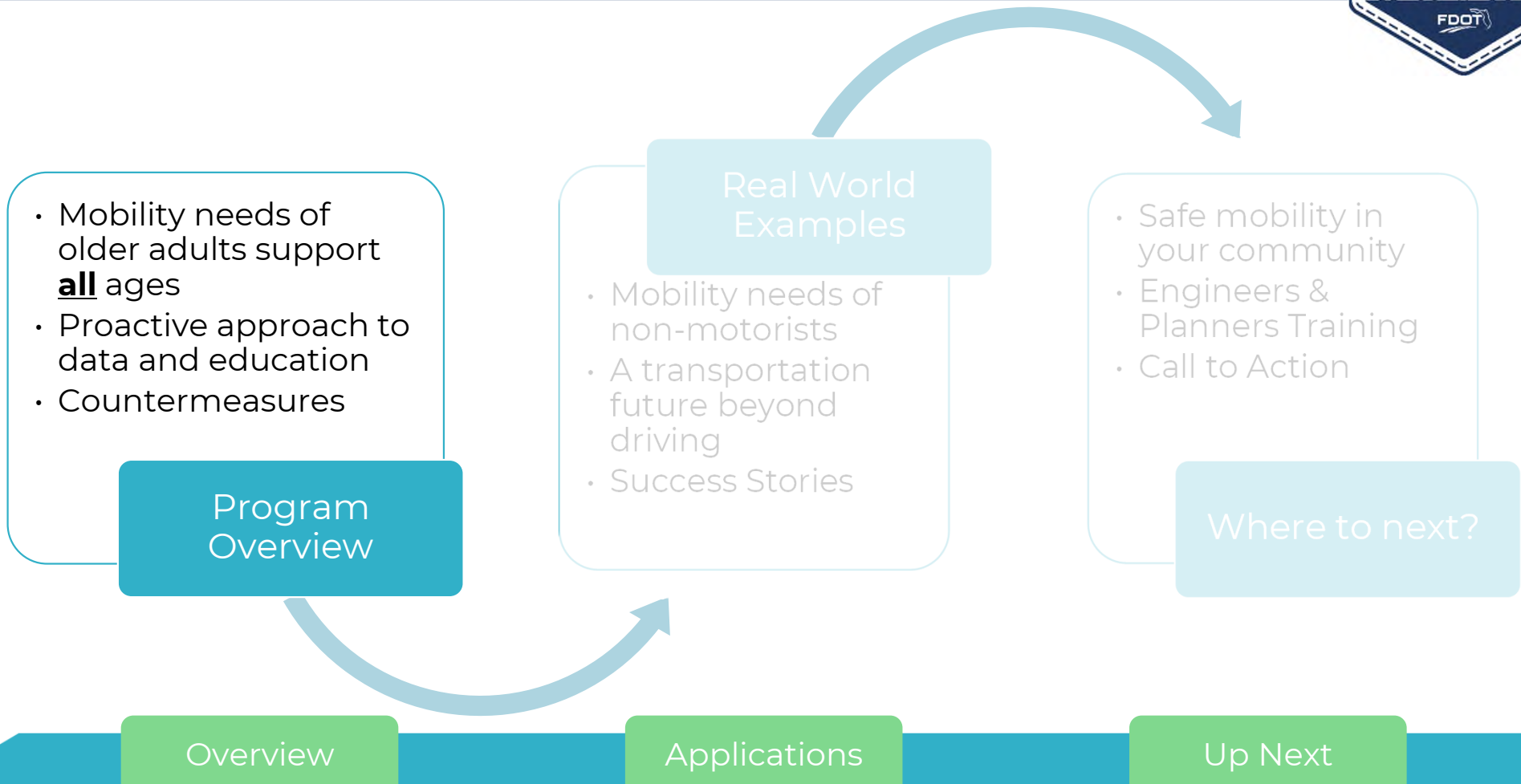
Florida Department of Transportation
Safe Mobility for Life Program and
Research Manager



Christina Miskis

South Florida Regional Planning Council
Planning Manager

Session Goals



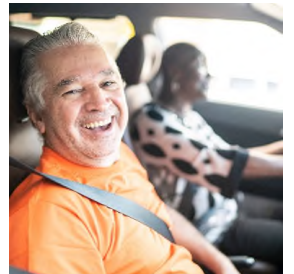
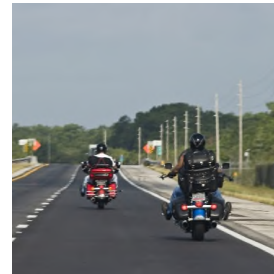
Who is an Aging Road User?

- > Driver
- > Passenger
- > Pedestrian
- > Bicyclist
- > Transit-rider
- > Motorcyclist
- > Operator of a non-motorized vehicle

ALL MODES

50 years of age or older

with a special focus on the **65 year and older age group*



Overview

Applications

Up Next

slido



**Join at slido.com
#1974543**

① Start presenting to display the joining instructions on this slide.

slido



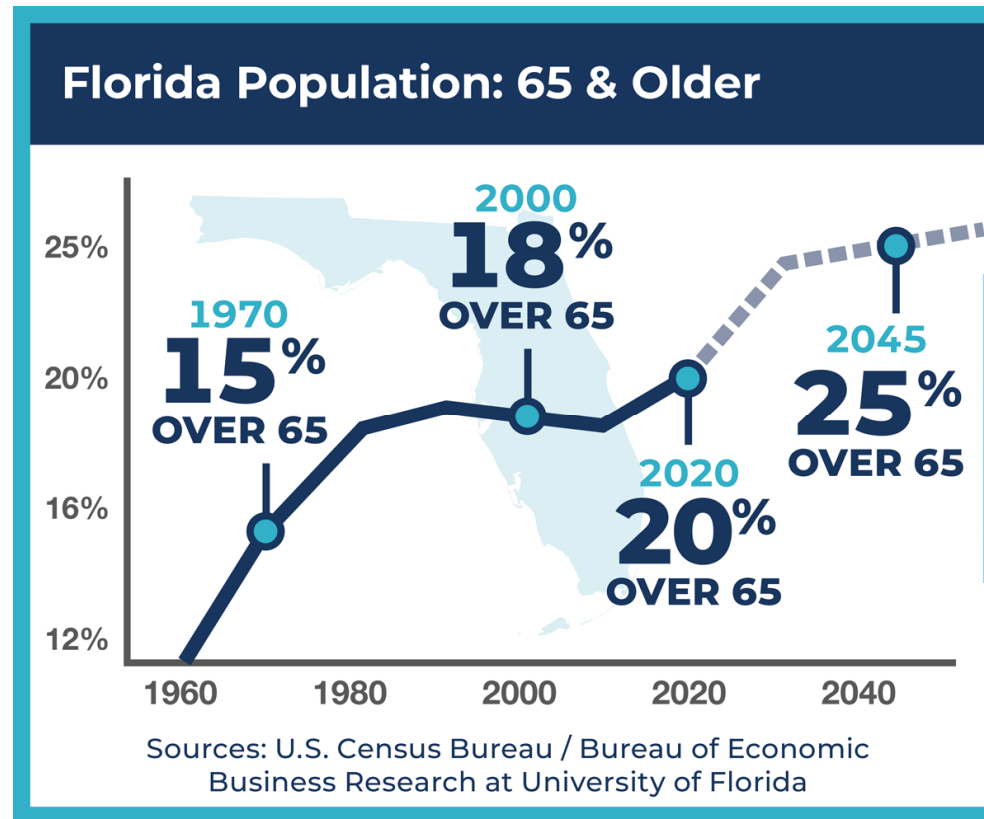
In 2020, what portion of Florida's population was over 65?

ⓘ Start presenting to display the poll results on this slide.

Population Projections



C. 20% of Florida's population was over 65 in 2020



By the year 2030, it is projected that 1 in 4 drivers will be 65 years or older.

Overview

Applications

Up Next

Facts About Older Drivers



Older adults are safe drivers.

- > Self-select driving times when risk is lower
- > Less likely to engage in risky behavior
- > BUT more likely to be injured or killed in a crash



Overview

Applications

Up Next

Working Together – One Statewide Goal



To improve aging road user safety and mobility in Florida by achieving a reduction in their fatalities and serious injuries while maintaining their safe mobility and connection to the community

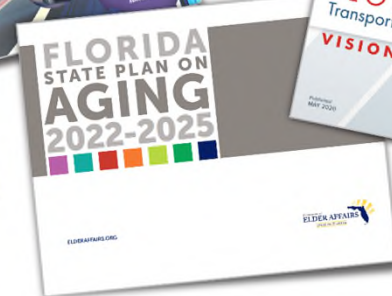


Overview

Applications

Up Next

Integration with State Plans & Initiatives



Overview

Applications

Up Next

The Keys to Achieve Safe Mobility for Life



UNDERSTAND
the impact aging
has on driving

Overview



BE PROACTIVE
about safe
driving skills

Applications



PLAN
for a safe transition
from driving

Up Next

slido



How do you want to get around when you're 80?

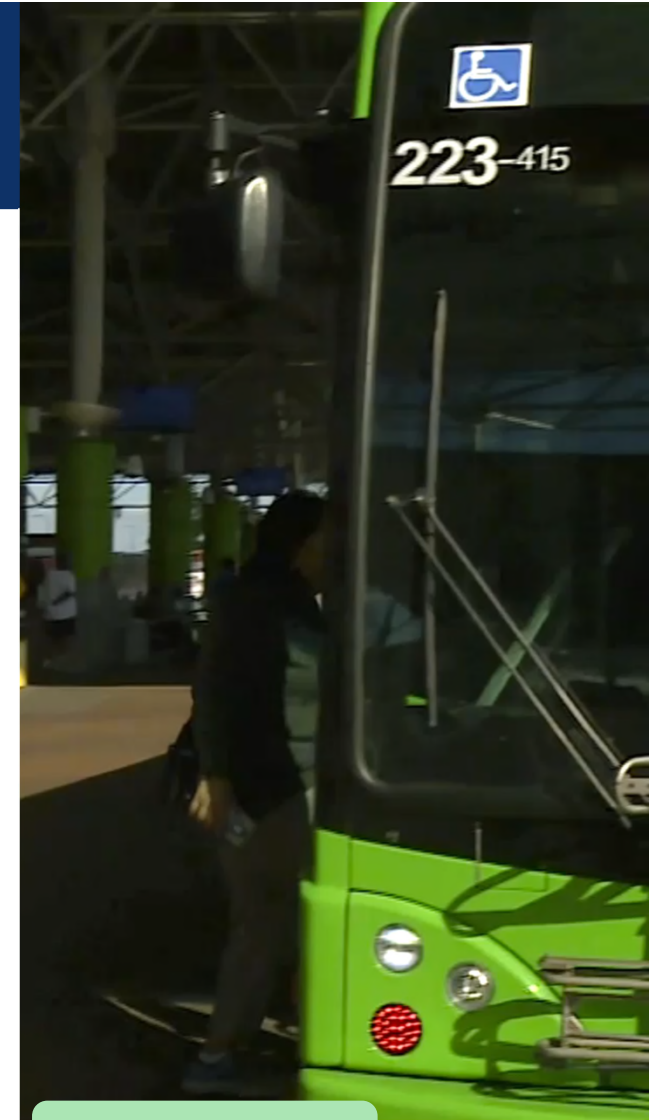
ⓘ Start presenting to display the poll results on this slide.

Helping Floridians achieve

mobility independence

so they can stay safe, mobile, and connected to their communities using all modes.

- > **Exploring transportation options** beyond a personal vehicle
- > **Safe access** to the places people need and want to go



Overview

Applications

Up Next

Key Stakeholders



Older
Adults

Family &
Caregivers

Health Care
Providers

Engineers &
Planners

OUR STAKEHOLDERS

Aging Service
Providers

Transportation
Providers

Law Enforcement
& Licensing
Agencies

Communities &
Local
Government

Overview

Applications

Up Next



Collaboration and Resources

Overview

Applications

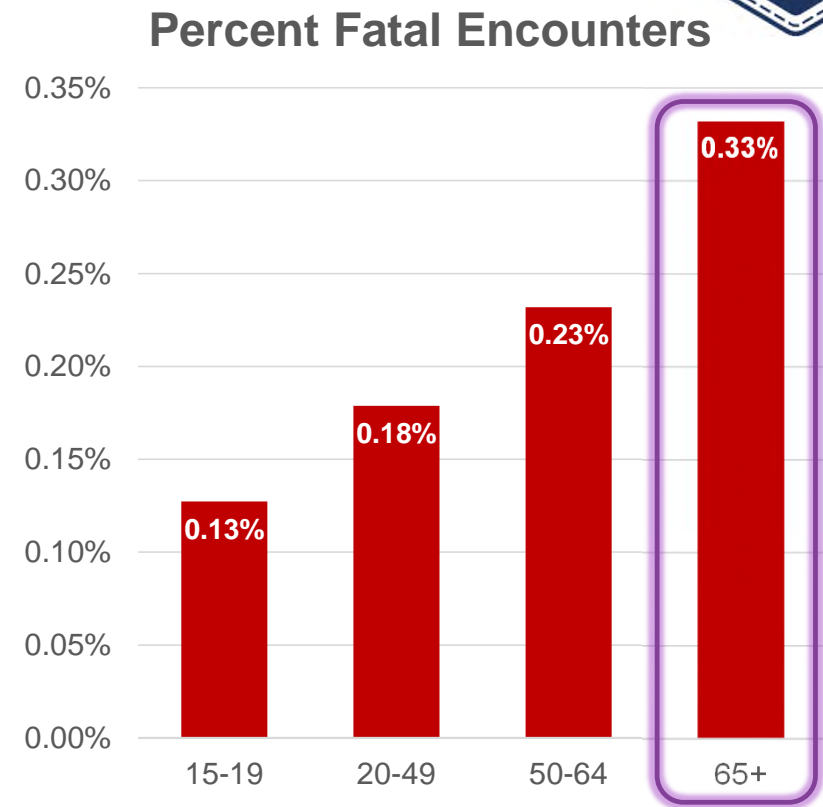
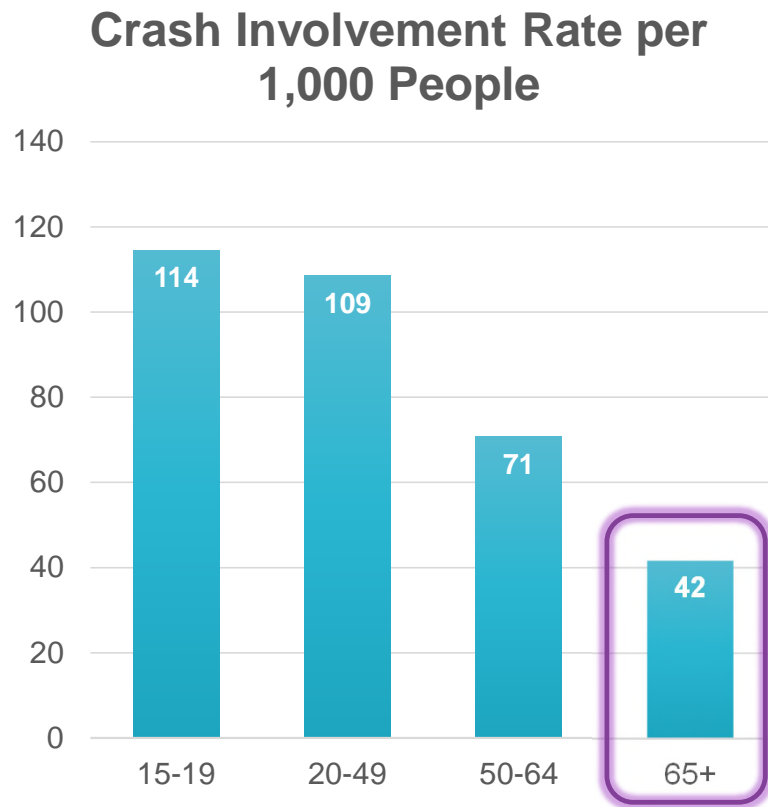
Up Next

Data

Countermeasures

Education

Aging Road Users: Fewer Crashes, More Deaths



Source: FLHSMV Snapshot Data from 2017 to 2021 and BEBR Population Tables by Age

Safe Mobility for Life Data: Dashboard

Data

Countermeasures

Education

[About](#) [Aging Road User](#) [Livable Communities](#) [Vehicle](#) [Stakeholders](#) [Laws](#) [Find a Ride](#)



Read
Florida's Guide
to Safe Mobility for Life
and find out how to
receive a free copy
Get Guide

Learn
how to remain
safe, mobile, and
independent by using
our resources
Access Materials

Find
transportation
options available to you
at [FindARideFlorida.org](#)
Find a Ride

[Click here to sign up](#) for Safe Mobility for Life updates.



fdot.tips/data

Safe Mobility for Life Data: eTraffic

Data

Countermeasures

Education

A+ | [Reset](#) | A-

[About](#) ▾ [Aging Road User](#) ▾ [Livable Communities](#) ▾ [Vehicle](#) ▾ [Stakeholders](#) ▾ [Laws](#) ▾ [Find a Ride](#)



Read
Florida's Guide
to Safe Mobility for Life
and find out how to
receive a free copy



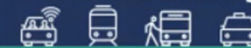
[Get Guide](#)

Learn
how to remain
safe, mobile, and
independent by using
our resources



[Access Materials](#)

Find
transportation
options available to you
at [FindARideFlorida.org](#)

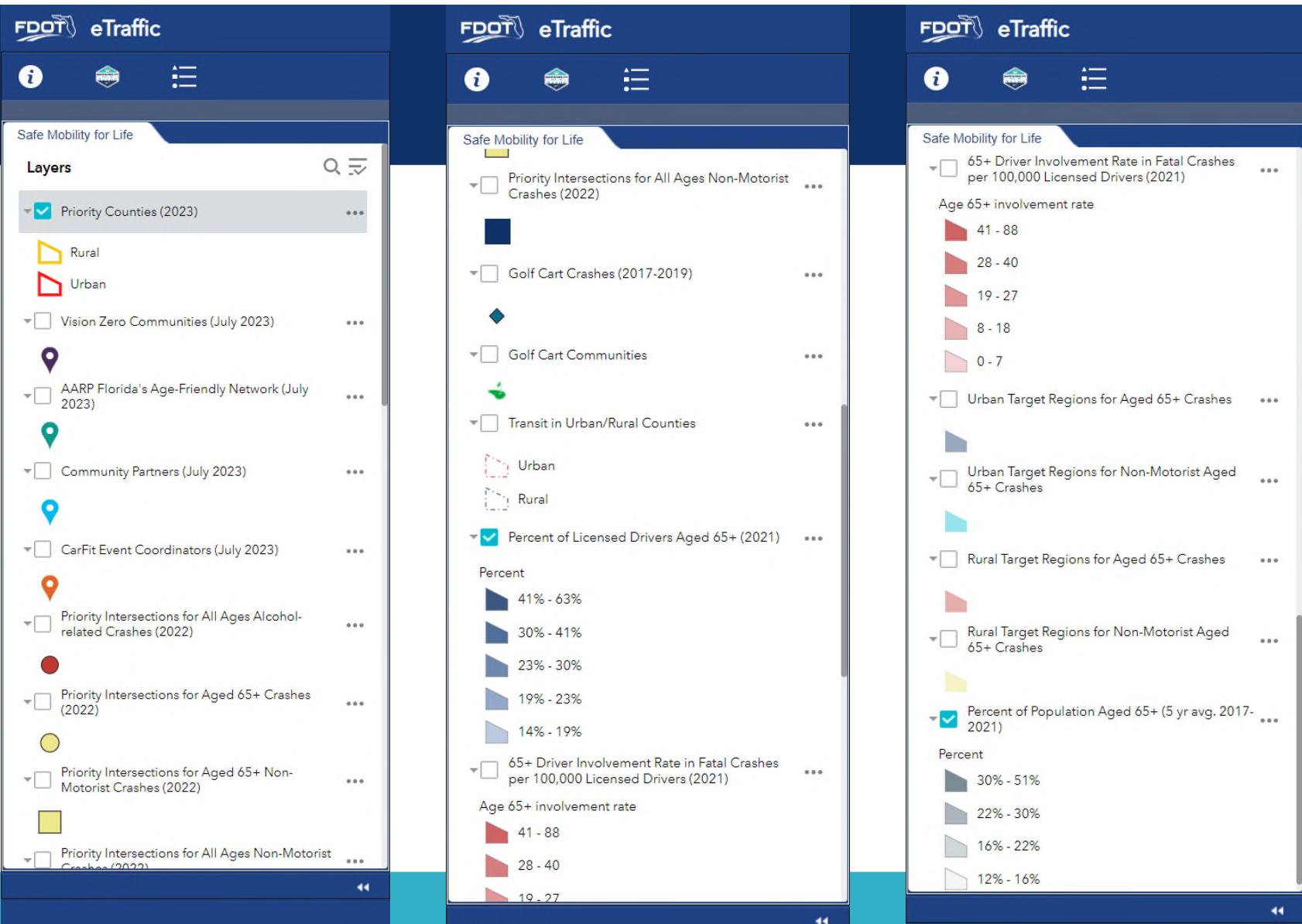


[Find a Ride](#)

[Click here to sign up](#) for Safe Mobility for Life updates.

fdot.tips/engineering







Collaboration and Resources

Overview

Applications

Up Next

Data

Countermeasures

Education

Resources

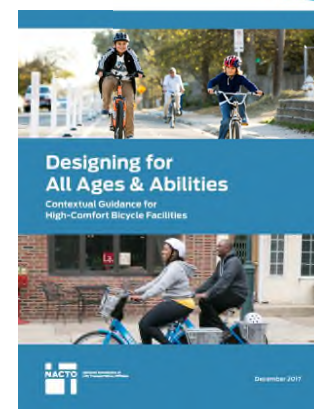
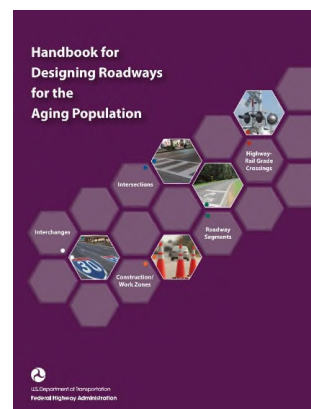
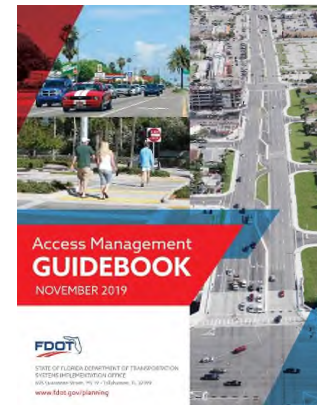
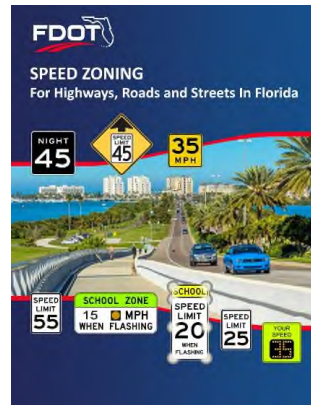
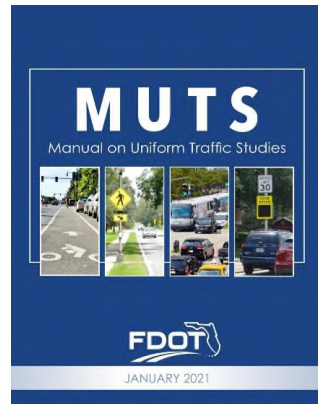
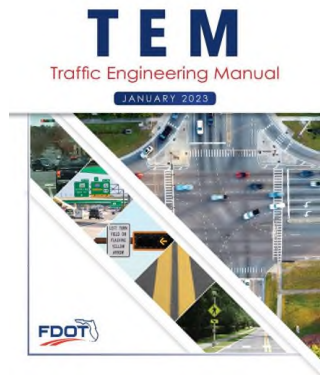


+ Other
National
Resources

Data

Countermeasures

Education



slido



Which of these countermeasures became a statewide standard after being originally implemented for older adults?

ⓘ Start presenting to display the poll results on this slide.

Countermeasures – Signing



Advance Street Name Signs

- > TEM Section 2.37
- > Recommended if
 - > There is a high 65 and older population
 - > The intersection is in a Safe Mobility for Life Coalition Priority County



Advance Street Name Sign at
Signalized Locations

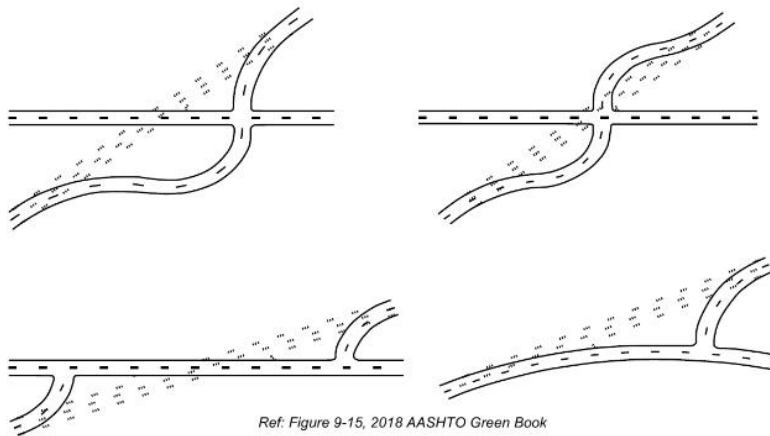
Countermeasures – Geometric Design



Intersection Angle

FDM Section 212.5

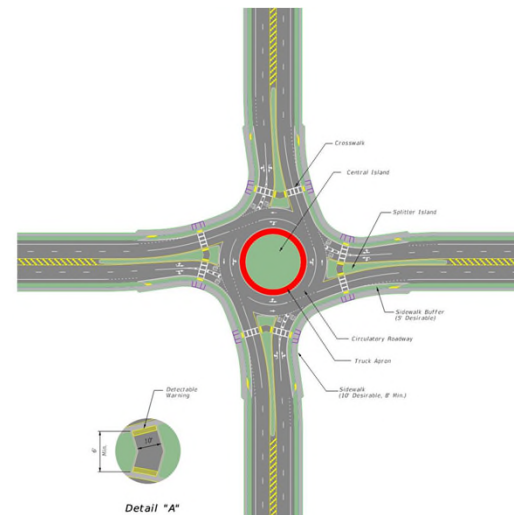
Figure 212.5.1 Intersection Reconfigurations



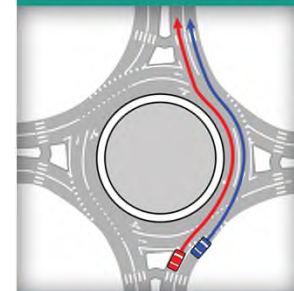
Ref: Figure 9-15, 2018 AASHTO Green Book

Roundabouts

FDM Section 213



Q. How do I navigate a roundabout?



A. Follow signs and markings to determine which lane you need to travel in before entering the roundabout.

SafeMobilityFL.com



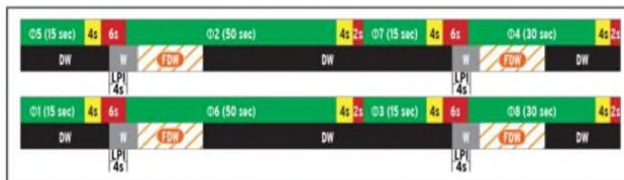
Countermeasures – Non-motorist



Leading Pedestrian Indicator (LPI)

TEM Section 3.11

A - Lead/lead left turn



B - Lead/lag left turn



LEGEND	Green Interval	Red Interval	Walk Interval
	Yellow Interval	Don't Walk Interval	Flashing Don't Walk Interval

Rectangular Rapid Flashing Beacons (RRFB)

TEM Section 3.10



When you see a Rectangular Rapid Flashing Beacon (RRFB):

See This

Do This



Expect pedestrians when approaching an RRFB.



fdot.tips/walking



Data

Countermeasures

Education



Collaboration and Resources

Overview

Applications

Up Next

Data

Countermeasures

Education

Education to Promote Livable Communities

Data

Countermeasures

Education



Age-Friendly Florida's Transportation Checklist

Community Design

Well-Designed, Shaded Buildings
Affordable Housing
Sidewalks and Bikeways
Well-Lit Areas

An age-friendly community has well-designed, shaded, and well-lit buildings, streets, sidewalks, and bikeways. They invite a sense of equity, safety, and pride and offer a range of affordable housing options where people live in close proximity to shops and services.

Please check only one box ("Very True," "Unsure," or "Not True") for each statement in the table below.

In the community I am reviewing:	Very True	Unsure	Not True
Alternative housing options are available, such as co-housing with others, secondary suites or "Mother-in-Law Apartments," apartments above or attached to street-level businesses.	<input type="checkbox"/>	<input type="checkbox"/>	<input type="checkbox"/>
It is comfortable, convenient, and easy for me to walk, roll, bike, take the bus, or ride with a friend, to the places where I need/want to go.	<input type="checkbox"/>	<input type="checkbox"/>	<input type="checkbox"/>
Grocery stores, pharmacies, medical offices, hospitals, schools, libraries, community centers, and places of worship are located near one another and close to my home.	<input type="checkbox"/>	<input type="checkbox"/>	<input type="checkbox"/>
Parks, community gardens, or other green spaces are within walking distance from my home.	<input type="checkbox"/>	<input type="checkbox"/>	<input type="checkbox"/>

Community Design Scores

Very True	Unsure	Not True
0	0	0

The following resources can help you learn more about Community Design in a livable community:

- 800 Cities: www.800cities.org
- AARP Livable Communities: www.aarp.org/livable
- AARP Livability Index: <http://livabilityindex.aarp.org/>
- AARP Network of Age-Friendly States and Communities: www.aarp.org/livable-communities/
- AARP Walk Audit Tool Kit: www.aarp.org/livable-communities/getting-around/3054/aarp-walk-audit-tool-kit
- Federal Highway Administration's Livability Resources: www.fhwa.dot.gov/livability/
- Florida Action Plan on Aging (2022): elderaffairs.org/wp-content/uploads/livable-florida-action-plan-2022.pdf
- National Aging in Place Council: www.aginginplace.org
- National Association of City Transportation Officials (NACTO): Street Design Guidance: nacto.org/publication/street-design-guidance/
- Role of Parks in Aging in Place: npsa.org/blog/the-role-of-parks-in-aging-in-place/
- Smart Growth America - Complete Streets: smartgrowthamerica.org/what-are-complete-streets/

Community Design

An age-friendly community has well-designed, shaded, and lighted buildings, streets, sidewalks, and bikeways. They invite a sense of equity, safety, and pride and offer a range of affordable housing options where people live in close proximity to shops and services.

Street Safety and Security

An age-friendly community provides design features that support safety, access, and mobility. They contain well-lit, hazard-free sidewalks and paths which are essential to encourage walking, an active lifestyle, and minimize the risk of slips and falls. It offers a high degree of connectivity to help boost social interaction and walking.

Getting Around

An age-friendly community provides safe, easy, and equitable access to transportation services, amenities, and support services. It offers a wide variety of viable transportation options for older adults at all levels of physical and cognitive ability to maintain their safe mobility and connection to the community, beyond driving.

Neighborhood Support Services

An age-friendly community encourages participation by providing access to a range of affordable activities, employment, and lifelong learning. It also offers an adequate range of community, health, and home support services.




fdot.tips/checklist

Accessing Resources



Home - Aging Road User - Livable Communities - Vehicle - Stakeholders - Laws - Find a Ride



Community Partners

Dementia and Transportation

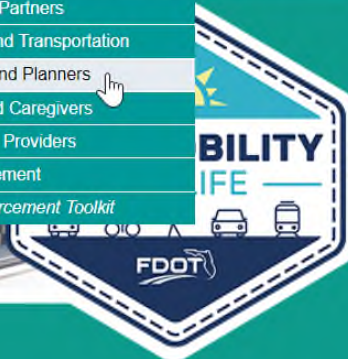
Engineers and Planners

Families and Caregivers

Health Care Providers

Law Enforcement

Law Enforcement Toolkit



Engineering and Planning

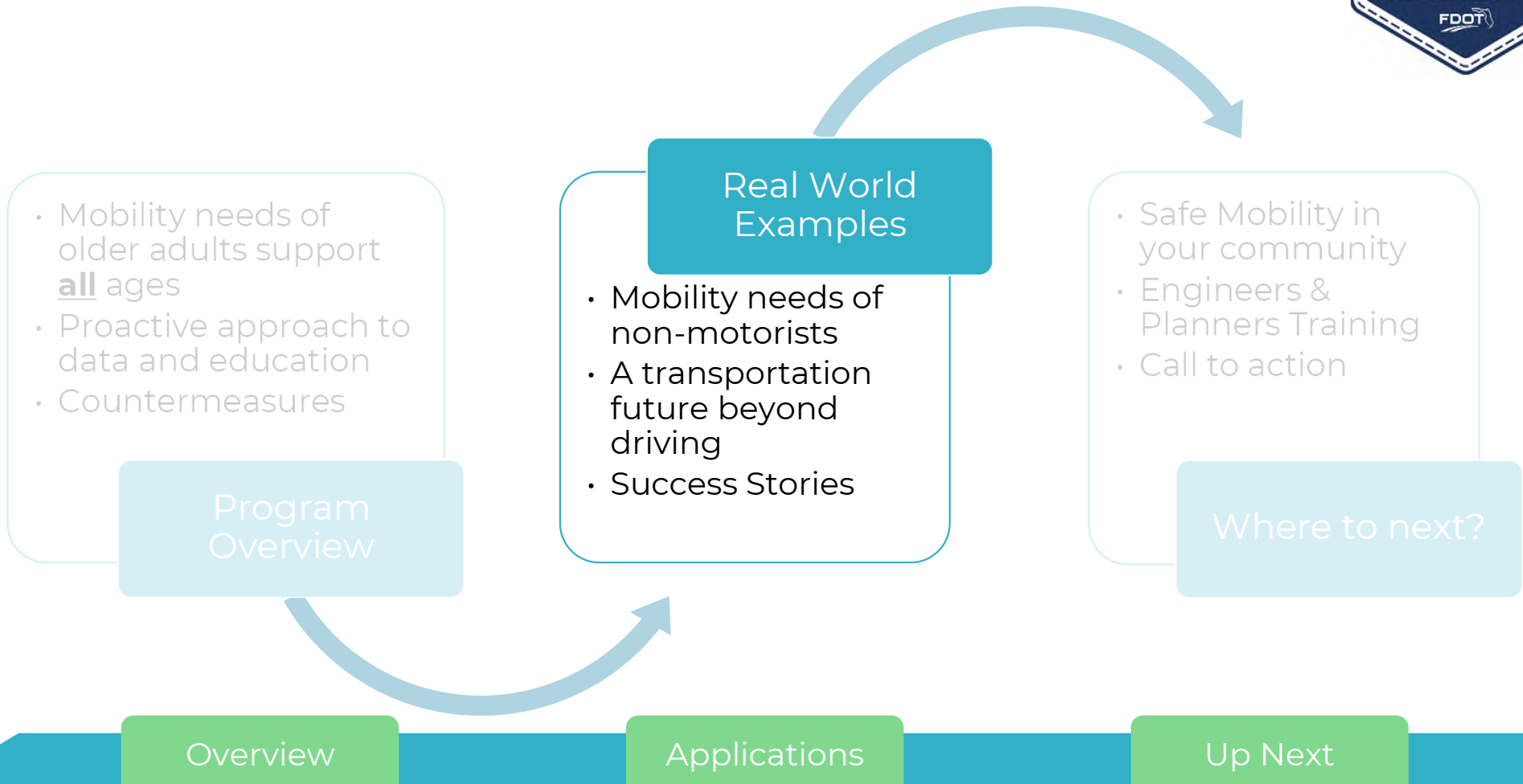
eTraffic | Countermeasures | Education | Frequently Asked Questions | Livable Communities

When designing roadways and communities to benefit an aging road user, engineers and planners should consider the **natural changes in vision, fitness and flexibility, attention span, and reaction time that occur as we age**. For example, making left turns or getting stranded in the crosswalk when the signal changes can be challenging for all road users, and especially more challenging for aging road users. However, it is possible to accommodate the needs of older drivers while enhancing the safety of all road users through the application of roadway design and implementation of proven engineering and safety countermeasures.

As stakeholders, engineers and planners can help support two focus areas in the **Safe Mobility for Life Strategic Action Plan** – Livable Communities and Mobility Independence. Building roadways and **livable communities** with Florida's aging population in mind is critical to the continued safety and mobility of older adults. The resources on this page help support the **Condition's data-driven** approach to eliminating fatalities and serious injuries for Florida's aging road users. We will be adding

fdot.tips/engineers

Session Goals



Real World Examples



Community Design

An age-friendly community has well-designed, shaded, and well-lit buildings, streets, sidewalks, and bikeways. They invite a sense of equity, safety, and pride and offer a range of affordable housing options where people live in close proximity to shops and services.

Street Safety and Security

An age-friendly community provides design features that support safety, access, and mobility. They contain well-lit, hazard-free sidewalks and paths, which are essential to encourage walking and biking, an active lifestyle, and minimize the risk of slips and falls. It offers a high degree of connectivity to help boost social interaction and active transportation.

Getting Around

An age-friendly community provides safe, easy, and equitable access to transportation services, amenities, and support services. It offers a wide variety of viable transportation options for people of all ages and with all physical and cognitive abilities to maintain their safe mobility and connection to the community, beyond driving.

Neighborhood Support Services

An age-friendly community encourages participation by providing access to a range of affordable activities, employment, and lifelong learning. It also offers an adequate range of community, health, and home support services.

Overview

Applications

Up Next

Community Design



Community Design

An age-friendly community has well-designed, shaded, and well-lit buildings, streets, sidewalks, and bikeways. They invite a sense of equity, safety, and pride and offer a range of affordable housing options where people live in close proximity to shops and services.



Transit Oriented Development Policy

Advancing Vibrant Communities and a More Prosperous Region



Overview

Applications

Up Next

Community Design



Continuous Infill Pattern

extending at least a half-mile from transit stations that is safe, pedestrian-friendly and reduces auto-dependency.

Increased Mix of Uses

supports vibrant communities near transit stations. The greatest market flexibility occurs when few uses are prohibited rather than traditional segregation of uses.

Limited or No Required Parking

stimulates business investment, generates local revenue, and encourages people to use transit. Parking requirements may be eliminated for the best TOD market response.

Higher Density benefits ridership and local economies, especially when it averages 75 du/acre, yielding up to 40,000 units in the half-mile surrounding transit stations, and includes housing for all walks of life.



Overview

Applications

Up Next

Getting Around: SFRTA – First / Last Mile



Getting Around

An age-friendly community provides safe, easy, and equitable access to transportation services, amenities, and support services. It offers a wide variety of viable transportation options for people of all ages and with all physical and cognitive abilities to maintain their safe mobility and connection to the community, beyond driving.



Overview

Applications

Up Next

Street Safety & Security



Street Safety and Security

An age-friendly community provides design features that support safety, access, and mobility. They contain well-lit, hazard-free sidewalks and paths, which are essential to encourage walking and biking, an active lifestyle, and minimize the risk of slips and falls. It offers a high degree of connectivity to help boost social interaction and active transportation.

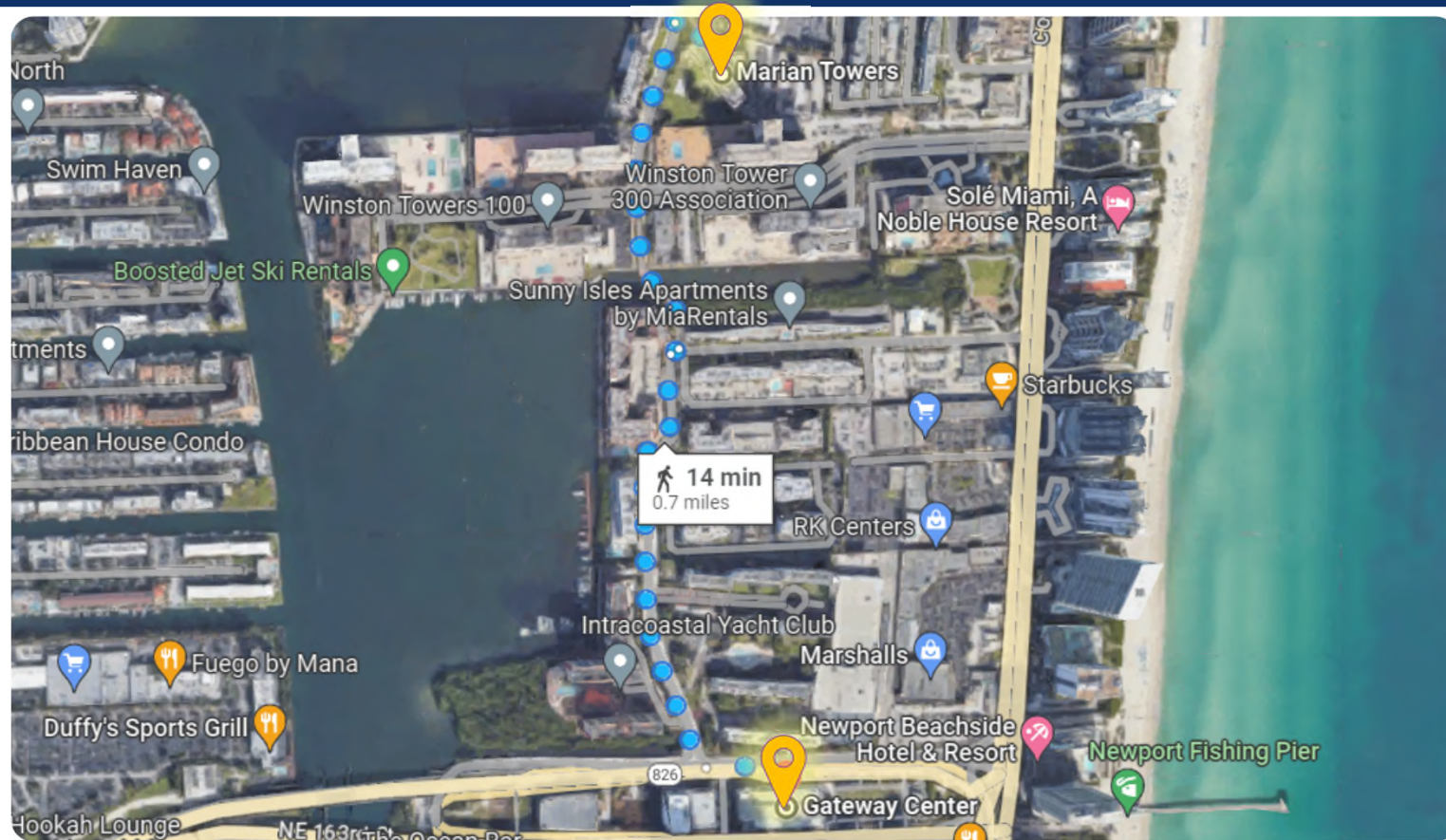


Overview

Applications

Up Next

Street Safety & Security



Overview

Applications

Up Next

Street Safety & Security



North Bay Pedestrian Bridge
📍 Sunny Isles Beach

Overview

Applications

Up Next

Street Safety & Security



Gateway Pedestrian Bridge
📍 Sunny Isles Beach



Overview

Applications

Up Next

Neighborhood Support Services



Neighborhood Support Services

An age-friendly community encourages participation by providing access to a range of affordable activities, employment, and lifelong learning. It also offers an adequate range of community, health, and home support services.



Overview

Applications

Up Next

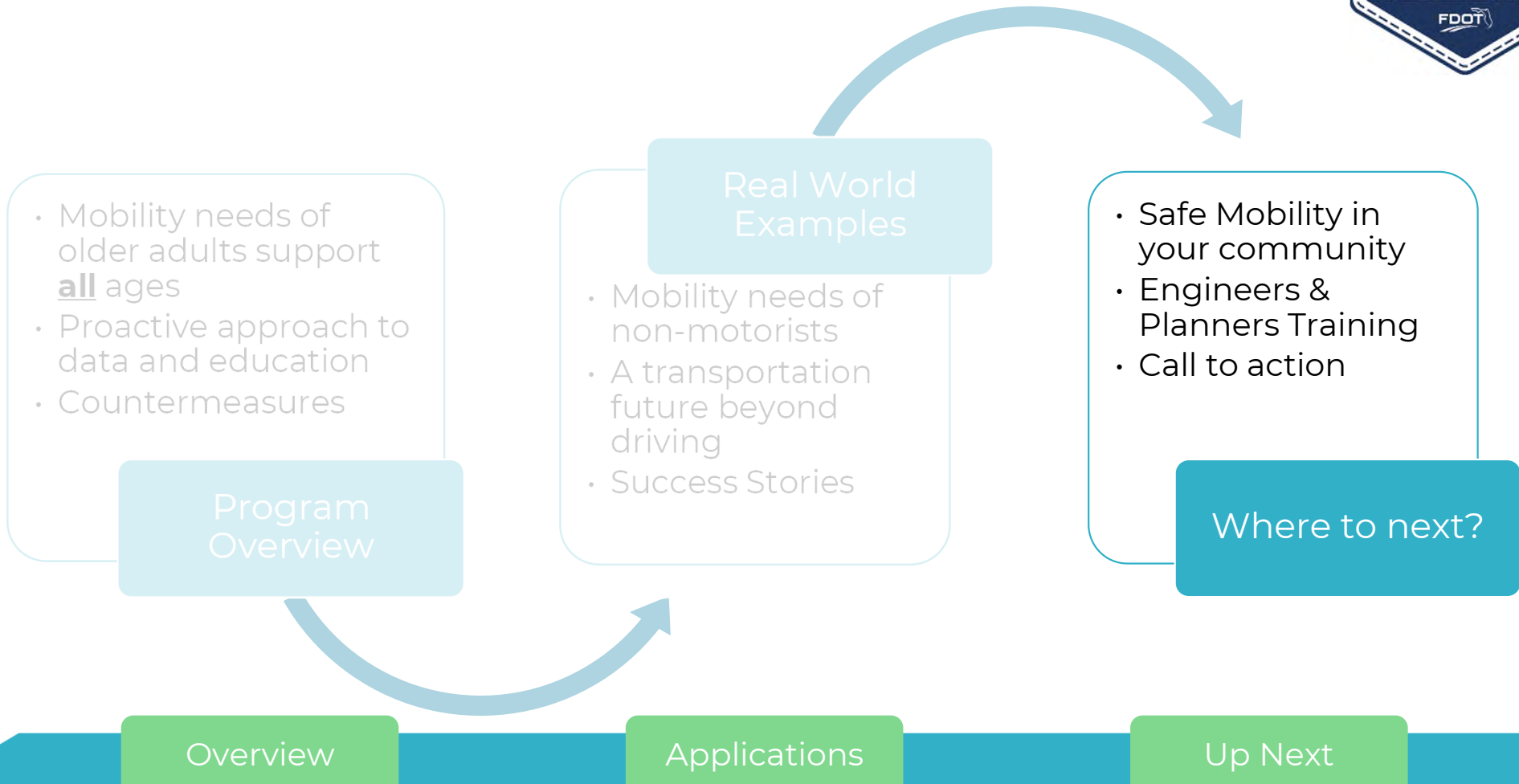
slido



How does your agency promote safety and mobility for older adults?

ⓘ Start presenting to display the poll results on this slide.

Session Goals



Mobility Week, Oct 27 – Nov 4, 2023



The state of Florida is celebrating its eighth annual statewide Mobility Week from October 27 through November 4, 2023.



Overview

Applications

Up Next

What have we done in the past?



Session 1 Introduction



2020

Working Together to Improve the Safety, Access, and Mobility of Florida's Aging Population

Transportation Symposium
Gail M. Holley, Safe Mobility for Life Program Manager
Florida Department of Transportation

2024

2008



FDOT
TRANSPORTATION
SYMPOSIUM
2020 Webinar Series

Safe Mobility for Life Program Resources and Focus Group

2022



Module 1

What is Safe Mobility for Life?

Overview

Applications

Up Next

Safe Mobility for Life Training Course



What is Safe
Mobility for
Life?



Impact of
Aging on
Driving



Roadway
and
Intersection
Treatments



Mobility
options,
beyond the
driver seat!



Community
Features



How You
Can Help

Audience:

- > Planners & Engineers
- > MPOs
- > Municipalities
- > Colleges (planning, engineering, behavioral sciences)
- > Professional organizations (ITE, FAPA, WTS, ASCE)

Format:

- > CBT
- > 3-4 CM Credits

Overview

Applications

Up Next

Safe Mobility for Life Training Course



Overview

Applications

Up Next

slido



What content would you like to see in the Safe Mobility for Life Training Course?

① Start presenting to display the poll results on this slide.

Call to Action



Use our data
through the
dashboard and
eTraffic



Bookmark
SafeMobilityFL.com



**Order &
distribute**
materials from
the Resource
Center



Sign-up for our
newsletter and
Listserv



Subscribe and
engage with us
on social media



Challenge
yourself to
explore other
options



Take the Safe
Mobility for Life
Training Course



Participate in
Mobility Week

Overview

Applications

Up Next

Questions?



SafeMobilityFL.com



@SafeMobilityFL

Christina Miskis
Principal Manager



(954) 924-3653
Cmiskis@sfrpc.com

South Florida Regional Planning Council
1 Oakwood Boulevard # 250
Hollywood, FL 33020



fdot.tips/stayconnected