



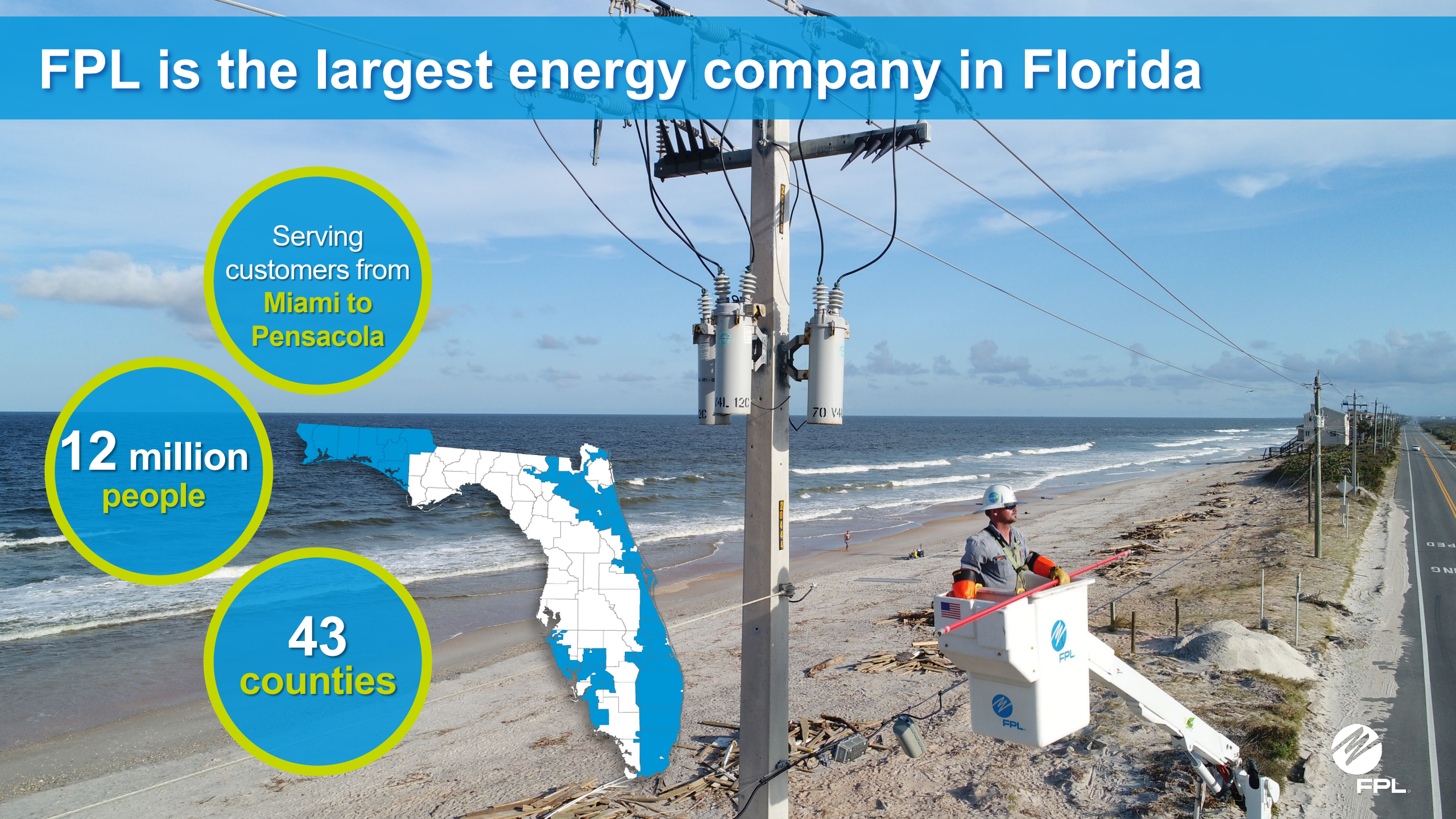
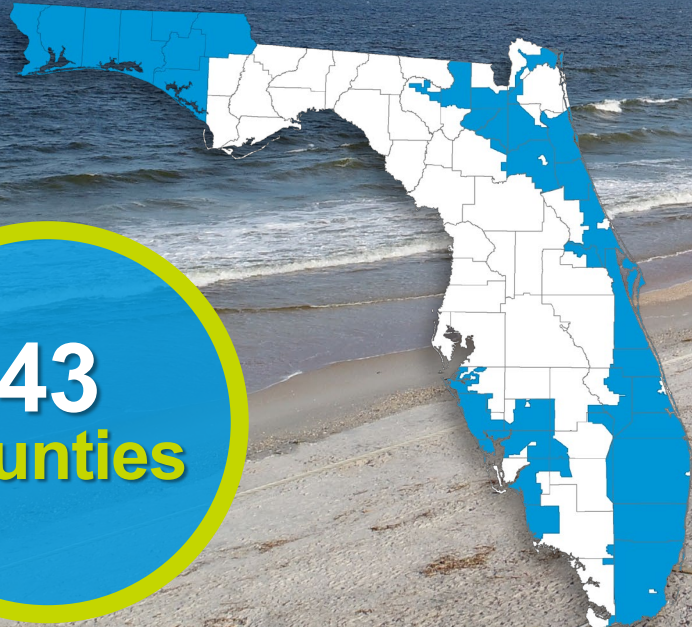
**Energizing the **EV Revolution****  
Christina Zabala, Florida Power & Light Company  
Senior project manager of development for mobility

# FPL is the largest energy company in Florida

Serving  
customers from  
**Miami to  
Pensacola**

**12 million  
people**

**43  
counties**



# Florida's rapid EV expansion

Florida  
**#2 in  
nation  
for EVs**

EVs expected  
to grow in FL  
**~1,000%  
by 2030**

**186,000+  
EVs in FL**

**1 of every 4**  
vehicles sold in the  
U.S. will be **electric**  
by 2027

**2.9+ MM**  
**EVs on the road**  
1% of vehicles in  
the U.S.



# EV strategy focuses on accelerating electrification by providing holistic charging solutions

Public Fast Charging

Fleet

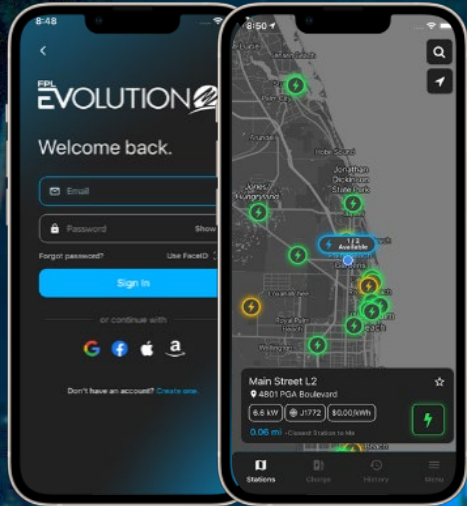
Educational & Awareness

New Technology

Residential



# The FPL EVolution fast charging network is positioned to be the largest public EV charging network in Florida



**\$100 MM**  
to expand public  
fast charging  
network

1,000  
**Fast charging**  
ports  
250+  
locations

State needs  
**5,000+**  
charging ports  
by 2026

Unlocking  
charging for  
**Rural and less-**  
traveled  
highways



# FPL EVolution fast charging stations across Florida

No cost to site host, amenity to visitors

89% of EV drivers make a purchase

No impact to electric bill

Near major highways and corridors



# Mobile chargers will support evacuations and provide charging infrastructure to metropolitan areas



**FPL EVolution Hub**  
*Riviera Beach, FL*

**FPL EVolution Plaza**  
*West Palm Beach, FL*



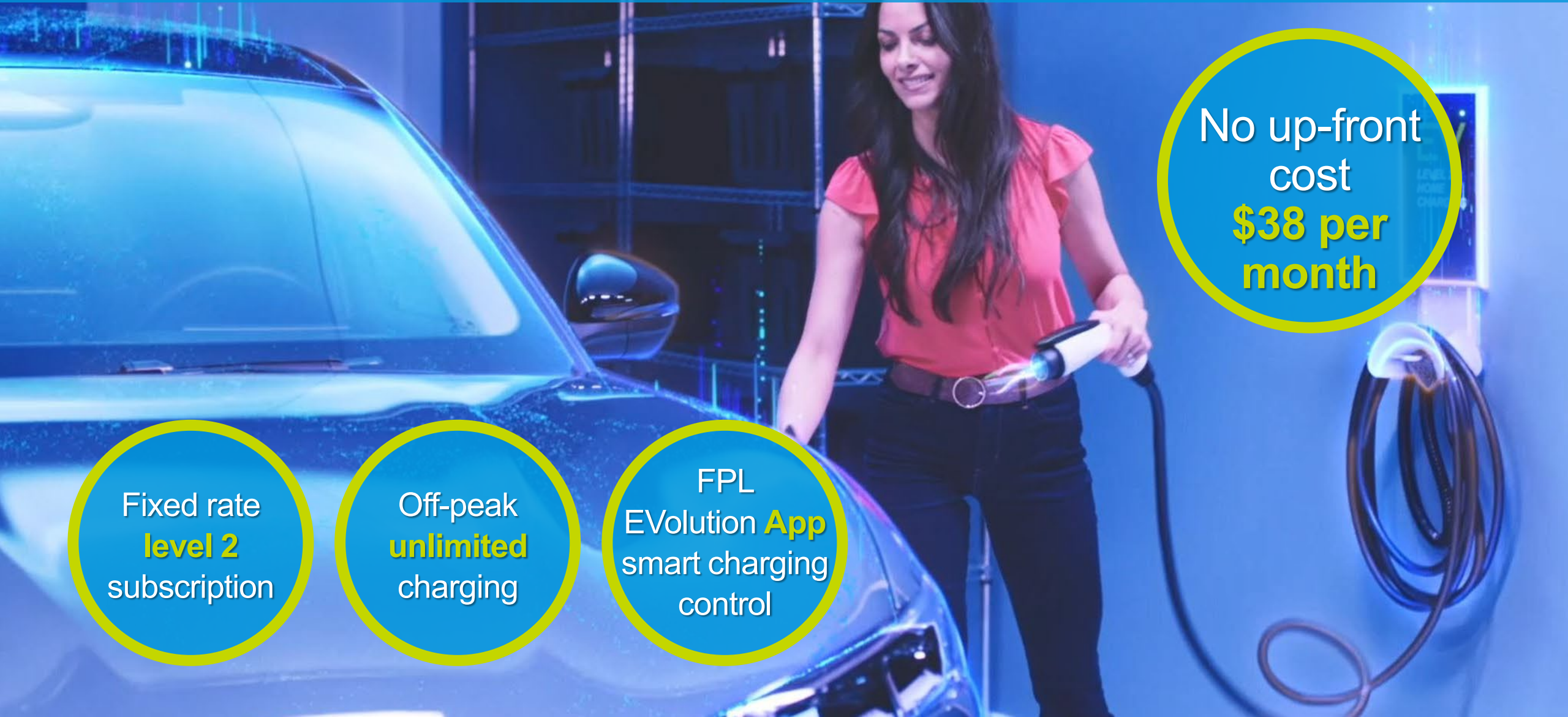
# Offering faster, unlimited at-home charging for a low, flat monthly price with FPL EVolution Home

No up-front cost  
**\$38 per month**

Fixed rate  
**level 2**  
subscription

Off-peak  
**unlimited**  
charging

FPL  
EVolution **App**  
smart charging  
control





# FPL EVolution fleet electrification

A white electric truck is parked at a charging station. A worker in a dark uniform and cap is plugging a charging cable into the truck. The station has blue and green lighting and signs that say 'EV' and 'TRUCK FAST CHARGING'. The background is dark with some blue light trails.

Meet ESG goals  
**emissions  
savings**

**Customized**  
turnkey charging  
solution

**On-bill**  
Fixed monthly  
charge

Site design,  
installation,  
equipment,  
O&M

# FPL is building the strongest, smartest energy grid in the U.S.



Most reliable  
**electric utility**  
in the U.S.

~**6 million**  
smart  
meters

200,000+  
**intelligent**  
devices

Since 2011  
**11+ million**  
outages  
avoided

# Our duty to serve customers today comes with the fundamental responsibility to serve customers tomorrow



More  
**resilient**

More  
**sustainable**

Building  
Florida's  
**energy  
future**

All of us can  
depend on -  
**including future  
generations**



**FPL EVOLUTION**  
PUBLIC · FLEET · HOME  
CHARGING SOLUTIONS



**FPL EVOLUTION®**

**PUBLIC · FLEET · HOME  
CHARGING SOLUTIONS**