



MEMORANDUM

AGENDA ITEM #VI.D

DATE: JANUARY 25, 2021

TO: COUNCIL MEMBERS

FROM: STAFF

SUBJECT: FRCA WINTER POLICY BOARD FORUM; 2019 – 2020 FRCA Annual Report

The Florida Regional Councils Association (FRCA) Policy Board consists of three board members from each of the state's 10 Councils: a County Representative, a Municipal Representative, and a Gubernatorial Appointee.

Councilmember Baily, Councilmember Udine, and Councilmember Leonard represent the South Florida RPC on the Policy Board. The Policy Board met in a virtual forum on Friday, January 8, 2021. The agenda is included for your information. Among the presentations, Policy Board Members received updates from FDOT Secretary Kevin Thibault, Florida Division of Emergency Management Director Jason Moskowitz, and legislative report by FRCA Executive Director Ron Book.

The 2019-2020 FRCA Annual Report has been completed and included for your information.

Recommendation

Information Only.



South Florida Regional Planning Council
1 Oakwood Boulevard, Suite 250, Hollywood, Florida 33020
954.924-3653 Phone, 954.924-3654 FAX
www.sfregionalcouncil.org



Apalachee • Central Florida
East Central Florida • Emerald Coast
North Central Florida • Northeast Florida • South Florida
Southwest Florida • Tampa Bay • Treasure Coast

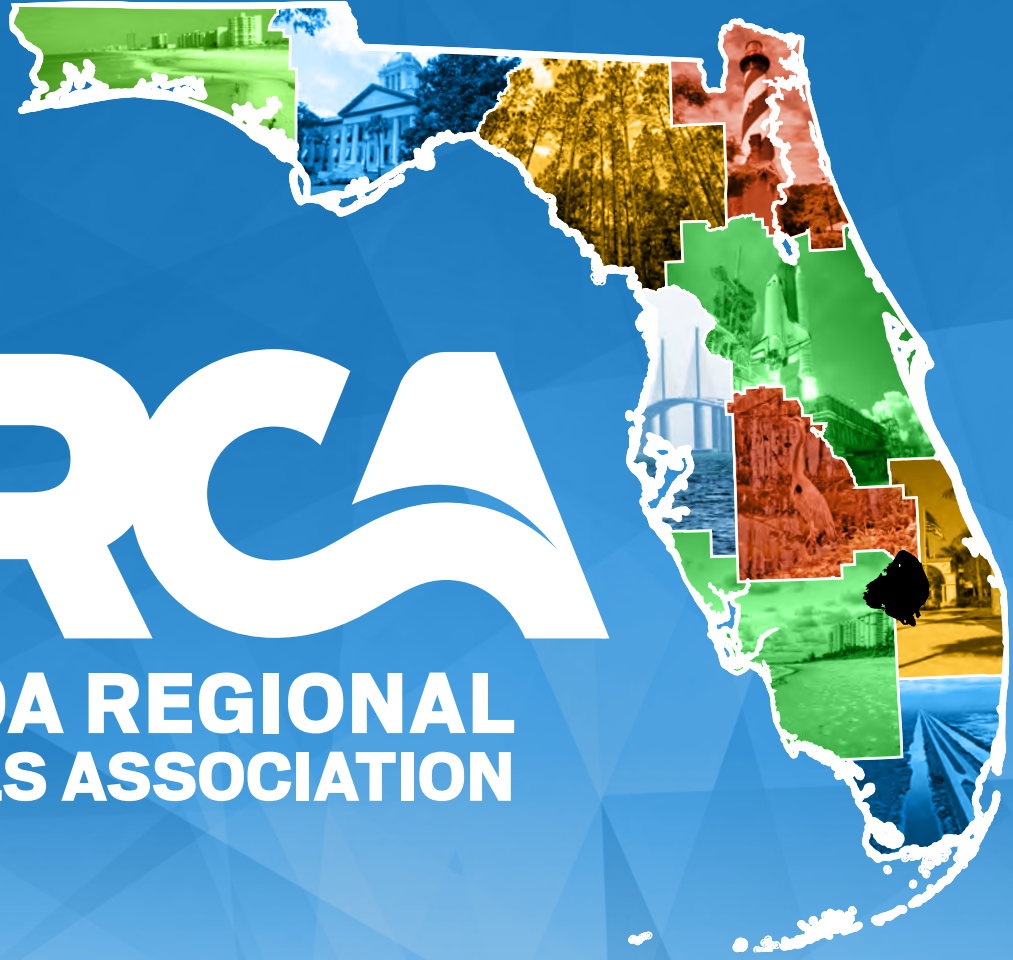
Florida Regional Councils Association Winter Policy Board Forum

January 8, 2021
9:00 a.m. – 11:30 a.m.

GoToMeeting - <https://global.gotomeeting.com/join/390560741>

AGENDA

- 9:00 – 9:05 a.m. Call to Order and Welcome**
Commissioner Peter O’Bryan, Treasure Coast RPC, FRCA President
- 9:05 – 9:35 a.m. Florida Department of Transportation**
Kevin Thibault, Secretary
- 9:35 – 9:45 a.m. Presentation of the 2019-20 FRCA Annual Report**
Chris Rietow, Apalachee RPC, Executive Director
- 9:45 – 10:15 a.m. Legislative Report**
Ron Book, Ronald L. Book, P.A.
Sean Sullivan, Tampa Bay RPC, FRCA EDAC Chair
- 10:15 – 10:25 a.m. Statewide Regional Evacuation Study Update**
Beth Payne, Chief Executive Officer, Northeast Florida RC
- 10:25 – 10:55 a.m. Florida Division of Emergency Management**
Jared Moskowitz, Director
- 10:55 – 11:25 a.m. Regional Planning Council Recent Projects**
 - **Regional Planning Council Report Outs**
All Regional Planning Councils
- 11:25 – 11:30 a.m. Other Items for Discussion and Adjourn**
Commissioner Peter O’Bryan, Treasure Coast RPC, FRCA President



FRCA

**FLORIDA REGIONAL
COUNCILS ASSOCIATION**

2019 - 2020
**ANNUAL
REPORT**

**LOCAL
KNOWLEDGE**

**REGIONAL
SOLUTIONS**

**STATEWIDE
IMPACT**

2019-2020 EXECUTIVE COMMITTEE

Table of Contents:

About FRCA	1
Policy Board & Staff	3
Council Information	4
Regional Conveners	5
Quality of Life	6
Transportation	7
Economic Development	8
Emergency Preparedness	9
RPC Awards	10
Collaborating Together	11



PRESIDENT

Ms. Sandra Walters
South Florida RPC



1st VICE-PRESIDENT

Commissioner Peter O'Bryan
Treasure Coast RPC



2nd VICE-PRESIDENT

Commissioner Kristin Dozier
Apalachee RPC



IMMEDIATE PAST PRESIDENT

Councilwoman Roxanne Horvath
Northeast Florida RC



PRESIDENT'S MESSAGE

As one of the most challenging years in many of our lifetimes due to the ongoing COVID-19 pandemic, Florida's ten regional planning councils, connected through the Florida Regional Councils Association, continued to provide meaningful support to our families and communities.

Leveraging federal funding provided by the U.S. Economic Development Administration, each RPC is working to implement economic development initiatives that assist both business and government. RPCs play a pivotal role in ensuring that economic development planning continues with a focus on recovery from COVID-19 by providing technical assistance and resources to local governments.

RPCs have advanced community collaboration during the pandemic by embracing rapidly-expanding technology and using state-of-the-art virtual platforms to reach as many stakeholders as possible. We have assisted local health departments and emergency management offices with COVID-19 testing sites and continued supporting the healthcare community with planning efforts for vaccine distribution.

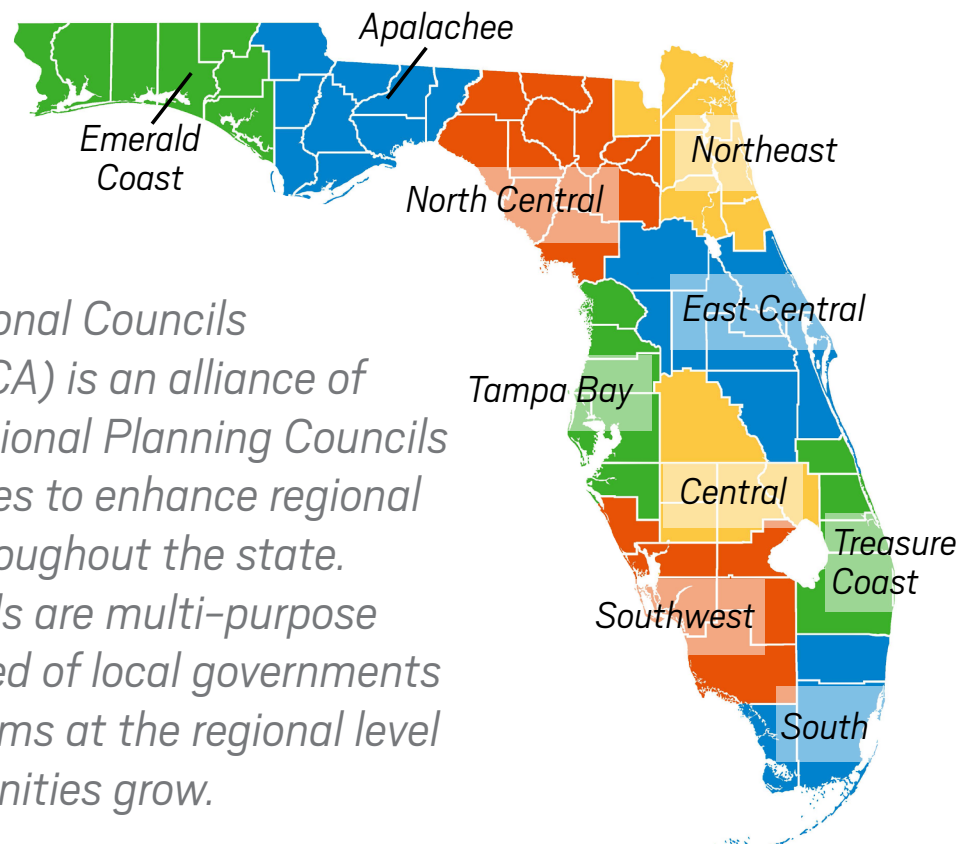
We are adapting to the many challenges that 2020 brought and continue our work in our critical mission areas of transportation, economic development, quality of life, environmental stewardship, emergency preparedness, and serving as regional conveners.

In this report I invite you to review examples of regional partnerships supported by FRCA, including innovative local government planning projects and successful state and federal program implementation. It was my pleasure to serve as your President, and I look forward to FRCA's continued success as it leverages partnerships to build a strong economy and improve the lives of all Floridians in the coming years.

A handwritten signature in blue ink, reading "Sandra Walters".

Sandra Walters, President
Florida Regional Councils Association

Leveraging partnerships to build a strong economy and improve the lives of all Floridians...THAT is the mission of FRCA.



The Florida Regional Councils Association (FRCA) is an alliance of Florida's ten Regional Planning Councils (RPCs) and serves to enhance regional collaboration throughout the state. Planning Councils are multi-purpose entities comprised of local governments that solve problems at the regional level and help communities grow.

LOCAL
KNOWLEDGE

REGIONAL
SOLUTIONS

STATEWIDE
IMPACT

Through the Regional Planning Councils, FRCA creates partnerships statewide to support economic growth, improve infrastructure and enhance the quality of life for all Floridians.

▶ **5**

**METROPOLITAN/
TRANSPORTATION PLANNING
ORGANIZATIONS STAFFED**

▶ **13**

**NUMBER OF REVOLVING LOAN FUND
APPLICATIONS REVIEWED**

▶ **122**

**ECONOMIC ANALYSES
COMPLETED (REMI)**

▶ **419**

**TECHNICAL ASSISTANCE ACTIVITIES
PROVIDED TO LOCAL GOVERNMENTS**

▶ **971**

PLANNING ACTIVITIES CONDUCTED

▶ **506**

**HAZARDOUS MATERIALS INSPECTIONS OF
SMALL QUANTITY GENERATORS (SQG)**

▶ **814,341**

**TRANSPORTATION DISADVANTAGED
TRIPS PLANNED**

REGIONAL CONVENING



RPCs lead community and regional vision efforts, engage the public in a variety of plans and programs, and maintain Strategic Regional Policy Plans.

TRANSPORTATION



Many RPCs serve as the Designated Official Planning Agency for the Transportation Disadvantaged Program. Several RPCs serve as staff to their local Metropolitan or Transportation Planning Organizations, known as MPOs or TPOs. Planning services of RPCs also include Complete Streets, Safe Routes to Schools, Greenways and Trails, and mobility and transit planning.

QUALITY OF LIFE



Through visioning and community planning efforts, RPCs assist local communities as they set goals to implement a vision and strategy for their communities and regions.

EMERGENCY PREPAREDNESS



RPCs staff Local Emergency Planning Committees (LEPCs), identify hazardous materials and security threats, and organize and conduct local emergency operation exercises. RPCs also collaborate on statewide projects such as the award-winning statewide Regional Evacuation Study.

ECONOMIC DEVELOPMENT



RPCs complete regional economic impact analyses using the nationally-recognized Regional Economic Models, Inc. (REMI) software, facilitate post-disaster and redevelopment planning, and administer revolving loan funds for small business loans and brownfields redevelopment. RPCs serve as Economic Development Districts for the Economic Development Administration of the U.S. Commerce Department.

2019-2020 Policy Board

APALACHEE REGIONAL PLANNING COUNCIL

Honorable Kristin Dozier, Leon County
Ms. Lisa Miller, Gubernatorial Appointee
Honorable Gene Wright, Town of Malone

CENTRAL FLORIDA REGIONAL PLANNING COUNCIL

Honorable Nathaniel Birdsong, City of Winter Haven
Honorable Juril "Buddy" Mansfield, DeSoto County
Ms. Jacqueline Tucker, Gubernatorial Appointee

EAST CENTRAL FLORIDA REGIONAL PLANNING COUNCIL

Mr. John Lesman, Gubernatorial Appointee
Honorable Sean Parks, Lake County
Honorable Dina Sweatt, City of Groveland

EMERALD COAST REGIONAL COUNCIL

Honorable Kasey Cuchens, City of Freeport
Honorable Tray Hawkins, Washington County
Mr. J.D. Smith, Gubernatorial Appointee

NORTH CENTRAL FLORIDA REGIONAL PLANNING COUNCIL

Honorable Charles Chestnut IV, Alachua County
Ms. Lorene Thomas, Gubernatorial Appointee
Honorable Robert Wilford, City of Alachua

NORTHEAST FLORIDA REGIONAL COUNCIL

Honorable John Drew, Nassau County
Honorable Roxanne Horvath, City of St. Augustine
Mr. Darryl Register, Gubernatorial Appointee

SOUTH FLORIDA REGIONAL PLANNING COUNCIL

Mr. Mario Bailey, Gubernatorial Appointee
Ms. Sandra Walters, Gubernatorial Appointee

SOUTHWEST FLORIDA REGIONAL PLANNING COUNCIL

Honorable Michael Atkinson, City of Clewiston
Mr. Tommy Perry, Gubernatorial Appointee
Honorable Gary Wein, City of Punta Gorda

TAMPA BAY REGIONAL PLANNING COUNCIL

Honorable Scott Black, City of Dade City
Honorable Ronald Kitchen, Citrus County
Ms. Barbara Sheen Todd, Gubernatorial Appointee

TREASURE COAST REGIONAL PLANNING COUNCIL

Honorable Peter O'Bryan, Indian River County
Mr. Reece Parrish, Gubernatorial Appointee
Honorable Doug Smith, Martin County

Advisory Committee & Staff

2019-2020 EXECUTIVE DIRECTORS ADVISORY COMMITTEE

Chris N. Rietow
Chair
Apalachee RPC

Sean T. Sullivan
Vice Chair
Tampa Bay RPC

Patricia M. Steed
Immediate Past Chair & Treasurer
Central Florida RPC

STAFF

Ronald L. Book
Executive Director
850.224.3427 | 305.510.2000
ron@rlbookpa.com

Rana Brown
Governmental Affairs Consultant
850.224.3427 | 305.510.2000
rana@rlbookpa.com

Denise Imbler
Statewide Coordinator
850.487.1426 | 850.509.4320
dimbler@arpc.org

Regional Planning Councils

	Date Established	2019 Regional Population ¹	Governing Board Size	Staff Size (FTE) ²	Square Miles ³	Budget (in millions)
 <p>Apalachee Calhoun, Franklin, Gadsden, Gulf, Jackson, Jefferson, Leon, Liberty, Wakulla</p>	Aug. 23, 1977	485,691	27	15	6,757	\$1.3
 <p>Central Florida DeSoto, Hardee, Highlands, Okeechobee, Polk</p>	July 1, 1974	899,298	18	19	5,287	\$4.2
 <p>East Central Florida Brevard, Lake, Marion, Orange, Osceola, Seminole, Sumter, Volusia</p>	Feb. 22, 1962	4,207,900	35	15	9,244	\$2.0
 <p>Emerald Coast Bay, Escambia, Holmes, Okaloosa, Santa Rosa, Walton, Washington</p>	Oct. 1, 1964	984,492	33	36	6,509	\$5.9
 <p>North Central Florida Alachua, Bradford, Columbia, Dixie, Gilchrist, Hamilton, Lafayette, Levy, Madison, Suwannee, Taylor, Union</p>	May 7, 1969	568,224	45	8	8,660	\$1.5
 <p>Northeast Florida Baker, Clay, Duval, Flagler, Nassau, Putnam, St. Johns</p>	Feb. 14, 1977	1,737,552	35	11	5,097	\$1.8
 <p>South Florida Broward, Miami-Dade, Monroe</p>	July 1, 1974	4,807,986	19	16	7,492	\$2.2
 <p>Southwest Florida Charlotte, Collier, Glades, Hendry, Lee, Sarasota</p>	Nov. 8, 1973	1,773,140	36	4	7,278	\$1.8
 <p>Tampa Bay Citrus, Hernando, Hillsborough, Manatee, Pasco, Pinellas</p>	Feb. 16, 1962	3,673,553	44	10	4,998	\$2.2
 <p>Treasure Coast Indian River, Martin, Palm Beach, St. Lucie</p>	Aug. 19, 1976	2,070,753	28	9	4,441	\$2.4

Source: Florida Estimates of Population, 2019, Table 1, Bureau of Economic and Business Research, University of Florida, 2019.
 FTE means Full-Time Equivalent.
 Total land and water area. Source: Bureau of Economic and Business Research, University of Florida

REGIONAL CONVENERS

RPCs serve as regional conveners. They lead community and regional vision efforts, engage the public in a variety of plans and programs, and maintain Strategic Regional Policy Plans.

Southwest Florida Task Force on Overdose Prevention

The Southwest Florida RPC developed a task force that focuses on opioid/overdose prevention. The Southwest Florida Task Force on Overdose Prevention (STOP) meets bi-monthly with partners from the 6-county region of SWFL consisting of different treatment centers, law enforcement, emergency management services, drug free coalitions, medical professionals, county commissioners and many other strategic community stakeholders.

With an initial focus on prevention education, intervention, and recovery, the task force has teamed up with community partners for grant writing, data collection/ review, health fairs, summits and other regional collaboration efforts to address substance abuse/overdose prevention.



Central Florida RPC Convenes the Region to Address Mobility



On October 30, 2019, the Central Florida RPC and the Heartland Regional Transportation Planning Organization hosted the Heartland Mobility Forum in Lake Placid, Florida. The event brought together more than 50 elected officials, non-profit organizations, agencies, and concerned citizens to address mobility in the rural six-county area, including DeSoto, Glades, Hardee, Hendry, Highlands, and Okeechobee counties. In over 5,000 square miles, only two small rural circulator fixed-route transit systems are available. The community transportation coordinators aim to meet the transit needs of the community through door-to-door services utilizing the limited Transportation Disadvantaged funding and rural public transit funding.

Commission for the Transportation Disadvantaged Executive Director David Darm spoke on the future of coordinated transportation, and the two Community Transportation Coordinators that serve the region shared the progress made in the last year. Then, attendees engaged in discussions exploring critical needs, barriers, and future possibilities. Informed by the forum, the Central Florida RPC will focus on enhancing communications, customer service, and partnerships as the cornerstones of the Council's Mobility Program in 2020.

The event concluded as staff unveiled HeartlandRides.org. Designed to be easy to use, the website and find-a-ride resource will connect riders with the options that are available to them and connect them to services and programs that may enhance their mobility.

QUALITY OF LIFE

The RPCs assist local communities as they implement community vision and strategies. Brownfields programs across the state work to provide resources that clean up abandoned or underused commercial and industrial sites. Many RPCs also provide other services to enhance the quality of life using GIS mapping and affordable housing initiatives.

U. S. Census Director Visits North Central Florida RPC



Dr. Stephen D. Dillingham, U. S. Census Director, Washington, D. C. Central Office, along with Marilyn Stephens, Assistant Regional Census Manager, Atlanta Regional Office, visited the offices of the North Central Florida RPC to discuss preparations for the upcoming 2020 Census. The Council, along with the other nine regional planning councils in Florida, is a Census Affiliate agency. Affiliate agencies partner with the Census to coordinate with local governments to prepare for the decennial Census and disseminate Census information.

During the visit, Census officials were briefed by Council staff on their outreach efforts concerning preparation for the 2020 Census. These efforts included working with local Census complete count committees, adopting a proclamation declaring March 2020 as Census Awareness Month in the north central Florida region, encouraging all counties and municipalities in the north central Florida region to adopt similar proclamations, posting information concerning the 2020 Census on the Council website and issuing press releases to inform the public about the importance of the 2020 Census.

Dr. Dillingham discussed the process for implementing the 2020 Census. He indicated that the goal was to have 80 percent of the 2020 Census responses completed online with telephone and mail options also being available for the initial count during Phase 1. During Phase 2, enumerators will canvass neighborhoods to count non-respondents. While April 1 was the official Census Day and the residency count day, the 2020 Census was completed in October 2020.

Apalachee RPC Establishes a Housing Program to Assist its Region



The Apalachee Regional Planning Council recently established a new program area in response to the devastating effects of Hurricane Michael. The Apalachee RPC Housing Program was formed to administer the Hurricane Housing Recovery Program (HHRP) in Calhoun County. Program staff includes two planners that work in coordination with Calhoun County Housing Department staff. Since its inception, the ARPC Housing Program has made great strides for housing throughout the Region and housing-related assistance in various forms is now being provided in Calhoun, Gulf, Liberty, and Wakulla counties.

The HHRP, administered by Florida Housing Finance Corporation, allocated \$65 million to Florida counties impacted by Hurricane Michael. Calhoun County has a total of 5,739 housing units and 43% or 2,469 units, sustained damage from the 2018 weather event. Of those, 203 units classified as “high damage” units, meaning damages totaled \$30,000 or more. As a result, the county received \$5,135,000 in housing recovery assistance.

The program will provide recovery assistance to 98 residents who have initially been determined eligible to receive housing assistance. Residents will be assisted through strategies identified by the Calhoun County Board of Commissioners in the Local Housing Assistance Plan which include:

- purchase assistance
- owner occupied housing rehabilitation/repairs
- demolition/reconstruction
- foreclosure prevention/mortgage assistance
- land acquisition and construction

TRANSPORTATION

RPCs participate in the Transportation Disadvantaged program, as staff to local Metropolitan/Transportation Planning Organizations, and provide planning services for Compete Streets, Safe Routes to Schools, and Greenways and Trails planning.

Northwest Florida Celebrates Mobility Week

Northwest Florida celebrated the second annual statewide initiative Mobility Week—an annual collection of outreach events intended to bring attention to safe multi-modal transportation choices—from October 25 through November 1, 2019. To promote Mobility Week, the Emerald Coast RC, the rideOn program, and each of the Transportation Planning Organizations, staffed by ECRC, partnered with local transit providers to coordinate Transit Ride Along press events. These included:

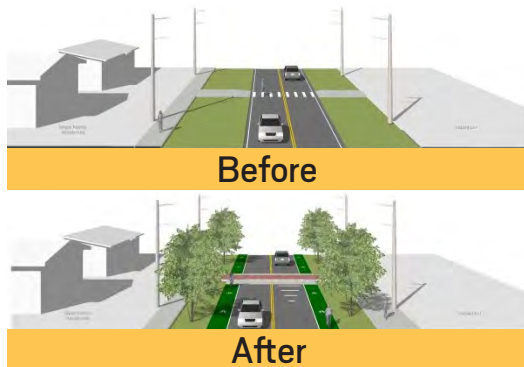


EC Rider Transit Ride Along (October 24, 2019): Participants rode Route 1 from Northwest Florida State College to Okaloosa County Elder Services. Participants included Okaloosa-Walton TPO board members, Okaloosa County Commissioner Carolyn Ketchel and City of Destin Councilmember Skip Overdier.

Bay Town Trolley Ride Along (October 29, 2019): Participants rode Route 6 in its entirety, from the Bay County Library. Bay County Transportation Planning Organization Chairperson, City of Callaway Mayor Pam Henderson participated in the event.

ECAT Ride Along (October 30, 2019): Participants rode Route 45 from the Rosa L. Parks Transit Complex to Pensacola City Hall. Participants included City of Pensacola Mayor Grover Robinson and Florida-Alabama TPO board members; Escambia County Commissioner Lumon May, Escambia County Commissioner Robert Bender, City of Pensacola Councilmember Ann Hill, and City of Pensacola Councilmember Jared Moore.

Martin MPO Complete Streets Access to Transit Study



The Martin Metropolitan Planning Organization (MPO) commissioned the Treasure Coast RPC to develop a County-wide Complete Streets: Access to Transit Study, which was adopted in June of 2020.

A “Complete Street” is a public road that provides safe and accessible options for multiple travel modes for people of all ages and abilities, including modes such as walking, cycling, transit, automobiles, and freight. Complete Streets play an especially important role in providing safe, effective connections to transit. Because every transit trip essentially begins and ends as a pedestrian trip, there is heightened focus on the “last-mile” connections to and from transit stops to boost transit performance, with a specific focus on the benefits for accessing transit safely and expanding the utility of the transportation network.

The Complete Streets: Access to Transit Study provides a comprehensive, long-term, context-sensitive approach to an improved roadway network as it relates to existing and anticipated transit stops and routes countywide. The Martin MPO’s recently adopted Long-Range Transportation Plan incorporates the study to help inform transportation priorities and funding through the 2045 planning horizon. The study employs a unique methodology to assess various conditions across the County’s nearly 1,200-mile roadway network to identify and prioritize eligible roadway segments for improvements. Finally, the study includes a series of recommended implementation activities by the MPO, local governments, and other transportation partners to achieve a safer, more complete street network going forward.

ECONOMIC DEVELOPMENT

RPCs complete regional economic impact analysis using the nationally recognized REMI software, facilitate Post Disaster, Redevelopment Planning, and administer revolving loan funds for small business loans and brownfields redevelopment.

East Central Florida RPC Assists with Economic Impact Analysis



The East Central Florida RPC and the North Brevard Economic Development Zone (NBEDZ) partnered to submit an Economic Adjustment Grant from U.S. Economic Development Administration (EDA) to analyze the economic importance of State Road 405 Causeway to

Brevard County's economy and make the case to attract the necessary investment and partnerships needed to rebuild the Causeway.

The State Road 405 Causeway in Brevard County is the most direct connection between the City of Titusville, home to most of the county's aerospace manufacturing suppliers, and the Kennedy Space Center (KSC) Launch Complex located on Merritt Island. It serves thousands of military and civilian personnel working at the Cape Canaveral Spaceport (CCS) and is the only route to the KSC Visitor Complex, one of Brevard County's most visited tourist attractions. Ensuring this critical access through future decades will drive economic competitiveness of these industries.

The project was comprised of four different economic impact simulation scenarios run using the REMI PI+ economic model and indicated that the S.R. 405 bridge:

- Provides access to almost 15,000 jobs
- Supports the generation of \$1.6 billion in sales and approximately \$699 million in personal income
- It contributes \$1.02 billion to the County's Gross Regional Product (GDP)

Closure would spur the loss of almost 13,500 jobs per year and Brevard County would also lose \$1.53 billion in sales, \$945.7 million in personal income, and \$975.8 million to the County's GDP. Since the completion of the economic forecasting, NASA has funded the Project Development and Environment Study and Design and will fund continued operation and maintenance until the new bridge is complete. Space Florida has committed to providing the matching funds for the INFRA grant award and will take over ownership of the bridge once constructed.

Treasure Coast RPC Assists with Redevelopment of H.D. King Power Plant

The Treasure Coast RPC has been working with the City of Fort Pierce over a number of years to facilitate the redevelopment of the former site of the H.D. King electrical power plant. Beginning in 1912 and continuing for almost a century, the City generated electrical power on the site.

After moving production to a new facility in 2008, the plant was decommissioned and eventually demolished. Over the last decade the Treasure Coast RPC has assisted with the redevelopment efforts, initially by conducting a community planning charrette to envision a future for the site and then utilizing its Brownfields Assessment program and Revolving Loan Fund, in the assessment and cleanup of contamination on the property.

After attempting to secure a suitable redevelopment partner consistent with the community's vision, the City engaged the Council to help conduct the evaluation of proposals as well as assist in the negotiation of the agreement with the developer selected by the City. The City unanimously approved the development agreement for King's Landing on November 12, 2019, which will return the property to the tax rolls and spur the improvement of a significant area adjacent to the downtown area and the Ft. Pierce City Marina.



EMERGENCY

PREPAREDNESS

Working together, RPCs conduct cooperative statewide projects such as the award winning statewide Regional Evacuation Study, the Energy Assurance Study, and coastal resiliency planning.

Northeast Florida RC Engages in Emergency Preparedness Efforts

- **Regional COAD Working Group** - In the Spring of 2020, the Northeast Florida RC, developed and formed a “Regional COAD Working Group”. Community Organizations Active in Disaster (COAD) are local networks of community and voluntary organizations that assist in disaster recovery. Many disasters in Florida are regional in nature, and communication and collaboration of the COAD Working Group will assist the region in times of greatest need.
- **Coastal Hazards Mapping Tool** - The online mapping tool developed and licensed by the Northeast Florida RC as the “Regional Resiliency Exposure Tool”, has been used to educate local stakeholders about coastal hazards and vulnerabilities. The Exposure Tool allows local residents, business owners and government officials to determine community exposure to specific coastal hazards. The tool includes the FEMA flood hazard zones, storm surge for evacuation planning, depth of flood at defined storm occurrence intervals and sea level rise at defined water levels from 1 to 6 feet of rise.
- **Shelter-In-Place Program** - In early 2020, the Northeast Florida Healthcare Coalition (HCC) and Northeast Florida Local Emergency Planning Committee for Hazardous Materials (LEPC), programs of the Northeast Florida RC, partnered to implement a pilot training and exercise program to enhance shelter-in-place (SIP) capabilities of healthcare facilities for a hazardous materials incident. A total of 104 people participated in the shelter-in-place training program and 50 healthcare facilities conducted a shelter-in-place exercise.

Tampa Bay RPC Releases 2020 All Hazards Disaster Planning Guide



The Tampa Bay RPC began producing disaster planning guides for the region in the early 1980s. This year the Tampa Bay RPC is proud to provide the 2020 All-Hazards Disaster Planning Guide. The Guide includes evacuation maps, shelter locations, and hurricane preparation tips for the Tampa Bay area. Over 160,000 Guides have been distributed throughout Citrus, Hernando, Manatee, and Sarasota counties and the digital guide is available online at www.tampabayprepares.org. The poster-size guides are available in libraries, post offices, and government buildings while supplies last. Spanish language versions are available in Manatee and Sarasota counties.

Apalachee RPC Prepares Long-Term Recovery Plans

On October 10, 2018, Hurricane Michael made landfall southwest of Calhoun and Liberty counties. Category 5-level wind gusts were experienced nearly 50 miles inland, devastating homes, businesses, and communities that make up this rural area in the Florida Panhandle. Each county was awarded a Community Planning Technical Assistance Grant from the Florida Department of Economic Opportunity to develop a long-term recovery plan. The Apalachee RPC was contracted to develop the plans with the support of OVID Solutions. Targeted stakeholder interviews were conducted, and community surveys were disseminated.



The countywide recovery plans identify priority projects that the communities hope to accomplish and a funding strategy for achieving each one. This is an opportunity for the county to re-imagine its long-term vision and implement it on a much faster timeline, which will better position the counties for economic growth consistent with community character. Out of disaster comes the opportunity to rebuild back stronger and more resilient communities.

AWARDS

2020 NADO Impact Awards

Apalachee Regional Planning Council

- 850 Hemp Summits

Central Florida Regional Planning Council

- City of Fort Meade Economic Development & Disaster Resiliency Plan

East Central Florida Regional Planning Council

- Food Assets Inventory
- Green Infrastructure Adaptation Plan for the Town of Melbourne Beach
- Central Florida's US&R TF4 MobEx 2019

North Central Florida Regional Planning Council

- Middle and Lower Suwannee River and Withlacoochee River Task Force

Tampa Bay Regional Planning Council

- Citrus County Local Mitigation Strategy
- Hernando County Local Mitigation Strategy
- Tampa Bay Regional Resiliency Coalition

2020 NADO Excellence in Regional Transportation Awards

Tampa Bay Regional Planning Council

- Resilient Bay Transportation Project



The Central Florida RPC was presented the Summit Award in the Small Business category by United Way of Central Florida due to eight years of 100% employee participation, an increase in per capita giving, and other participation increases during the 2019–2020 fundraising campaign. Through personal gifts, office fundraising and activities, and opportunities to volunteer, the RPC staff shows their commitment to the community and has contributed more than \$10,000 each year for the past three years.

South Florida RPC Awarded "Community Partner of the Year"

The South Florida RPC was recognized as the "Community Partner of the Year" from the U.S. Small Business Administration (SBA), South Florida District Office. This award honors any organization that assists entrepreneurs through advocacy and other efforts that raise the profile, effectiveness, health, vitality, growth, or expansion of small businesses in the SBA's South Florida District Office territory. These efforts can target specific segments of the small business population such as women, veterans, minorities, exporters, and those small firms located in rural communities.



South Florida Regional Planning Council

Proudly serving South Florida since 1974

**NATIONAL SMALL
BUSINESS WEEK
— AWARDS —
#SMALLBUSINESSWEEK**

STATEWIDE PARTNERS



COLLABORATING TOGETHER

Planning Councils are multi-purpose entities comprised of local governments that solve problems at the regional level and help communities grow.

Regional Planning Councils Receive Coronavirus Recovery Funding

In response to the COVID-19 pandemic and its impact on economies across the country, Congress appropriated \$1.5 billion for the U.S. Department of Commerce, Economic Development Administration (EDA) as part of the Coronavirus Aid, Relief and Economic Security Act. Each regional planning council (RPC) throughout Florida was awarded a two-year, non-competitive grant of \$400,000. As EDA designated Economic Development Districts, RPCs have well established economic development programs focused on regional resilience. This investment provides RPCs with the critical resources necessary to develop or update disaster recovery and resiliency economic development strategies and fortify those programs that help communities respond to and recover from the COVID-19 pandemic. Through working extensively with regional stakeholders to develop a framework and strategies to facilitate economic recovery, efforts will focus on the most affected industries in each of the regions. They will further enhance economic diversity efforts to create more resilient, innovative, and globally competitive regions for the future.



To further aid economic recovery for the business community, EDA provided CARES Act funding to capitalize on two of the existing Revolving Loan Fund programs housed at the Apalachee and South Florida RPCs. These funds offer short-term loans to businesses unable to secure traditional funding.

The funding was appropriated in part due to the advocacy of the National Association of Development Organizations (NADO), who worked with Congressional leadership in both chambers of Congress. NADO is a national trade association representing regional development organizations across the country, advancing regional strategies, partnerships, and solutions to strengthen the economies of regions. North Central Florida RPC Executive Director Scott Koons serves on the Executive Committee of NADO as Immediate Past President. In addition, Apalachee RPC Executive Director Chris Rietow and Central Florida RPC Executive Director Pat Steed serve, along with Director Koons, on the Board of Directors of NADO.

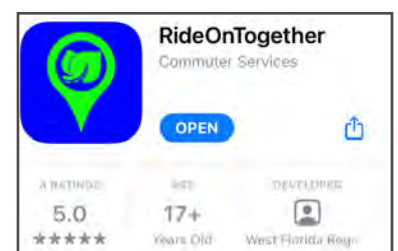
Emerald Coast RC and Apalachee RPC Partner To Relaunch The Regional Commuter Assistance Program



The Emerald Coast RC and Apalachee RPC partnered to relaunch the regional commuter assistance program as RideOn Commuter Services. RideOn is a Transportation Demand Management program of the Florida Department of Transportation, serving District 3 and its sixteen counties across northwest Florida.

Relaunched in early 2020, the program offers a regional approach to connecting people with alternate forms of transportation. RideOn strives to provide people with flexible and sustainable transportation choices that improve the quality of life for all by promoting multi-modal forms of transportation such as remote work, ride-share, public transit, biking, and walking, and “last mile” connectivity.

An interactive mobile RideOn app was created for iOS and Android platforms that allow citizens to easily connect with ride-share partners, vanpools, and biking or walking partners. Detailed commute data is generated, and participants can track their impact on greenhouse gas emissions, gas and money saved, and even calories burned by using the alternative modes of transportation. The app allows real-time tracking for the mobility options and engages users to recognize their impact on the community and the environment. Join us at RideOnTogether.org.



Regional Planning Councils Awarded Technical Assistance Grants

On August 7, 2020, Governor DeSantis announced nearly \$1 million in community planning technical assistance grants to local governments and regional planning councils. Administered by the Florida Department of Economic Opportunity, the technical assistance grants assist Florida communities in creating innovative planning and development strategies to promote economic diversity. Four regional planning councils received grants:



Apalachee RPC

- Conduct training and prepare a toolkit for community planning activities

Central Florida RPC

- Prepare a study on Migrant and Farmworker Housing in the central Florida region and a model ordinance that can be incorporated into local government land development regulations

East Central Florida RPC

- To develop the East Central Florida Food Resiliency Action Plan for a more resilient local, county, and regional food system
- To create a Strategic Resilience Action Plan for the recently established East Central Florida Regional Resilience Collaborative

Emerald Coast RC

- To develop a corridor master plan for US-90 in Escambia, Santa Rosa, and Okaloosa counties that focuses on a multi-use trail

Regional Planning Councils Support Florida's Coral Reef Campaign



From left to right: Isabel Cosio Carballo (Executive Director, South Florida Regional Planning Council); Broward County Commissioner Beam Furr; Miami-Dade County Commissioner Daniella Levine Cava (now Mayor of Miami-Dade); Kathy Fitzpatrick (Martin County Coastal Engineer); Thomas Lanahan (Executive Director, Treasure Coast Regional Planning Council); Martin County Commissioner Doug Smith

Over the last three years the South Florida RPC and Treasure Coast RPC have worked with the Florida Department of Environmental Protection and public, private, and nonprofit stakeholders to further public awareness, restoration, and protection of Florida's endangered coral reef spanning Miami-Dade through Martin counties, and Monroe County. In January 2020, the Councils were among those who welcomed Governor DeSantis to Frost Museum of Science for the launch of Florida's Coral Reef campaign.



2507 Callaway Road, Suite 200
Tallahassee, FL 32303
850.487.1426 | flregionalcouncils.org

REGIONAL PLANNING COUNCILS:

APALACHEE REGIONAL PLANNING COUNCIL
Executive Director: Chris N. Rietow
2507 Callaway Road, Suite 200
Tallahassee, FL 32303
850.488.6211 | arpc.org

CENTRAL FLORIDA REGIONAL PLANNING COUNCIL
Executive Director: Patricia M. Steed
555 East Church Street
Bartow, FL 33830
863.534.7130 | cfrpc.org

EAST CENTRAL FLORIDA REGIONAL PLANNING COUNCIL
Executive Director: Hugh W. Harling, Jr.
LYNX Building, 4th Floor,
455 North Garland Ave., Orlando, FL 32801
407.245.0300 | ecfrc.org

EMERALD COAST REGIONAL COUNCIL
Executive Director: Austin L. Mount
4081 East Olive Rd., Suite A,
Pensacola, FL 32514
850.332.7976 | ecrc.org

NORTH CENTRAL FLORIDA REGIONAL PLANNING COUNCIL
Executive Director: Scott R. Koons
2009 Northwest 67th Place
Gainesville, FL 32653
352.955.2200 | ncfrc.org

NORTHEAST FLORIDA REGIONAL COUNCIL
Executive Director: Elizabeth Payne
100 Festival Park Avenue
Jacksonville, FL 32202
904.279.0880 | nefrc.org

SOUTH FLORIDA REGIONAL PLANNING COUNCIL
Executive Director: Isabel Cosio Carballo
1 Oakwood Blvd, Suite 250
Hollywood, FL 33020
954.924.3653 | sfregionalcouncil.org

SOUTHWEST FLORIDA REGIONAL PLANNING COUNCIL
Executive Director: Margaret A. Wuerstle
PO Box 60933
Fort Myers, FL 33906
239.938.1813 | swfrpc.org

TAMPA BAY REGIONAL PLANNING COUNCIL
Executive Director: Sean T. Sullivan
4000 Gateway Centre Blvd., Suite 100
Pinellas Park, FL 33782
727.570.5151 | tbrpc.org

TREASURE COAST REGIONAL PLANNING COUNCIL
Executive Director: Thomas J. Lanahan
421 Southwest Camden Avenue
Stuart, FL 34994
772.221.4060 | tcrpc.org