



SR 836 Southwest Extension

Miami-Dade County, Florida

August 8, 2018

MDX WORK PROGRAM NO.: 83618



Project Need

- Population growth and traffic in southwest Miami-Dade has significantly increased without the support of the required transportation capacity
- Congestion causes approximately 3-hour daily commutes in both directions and a deteriorating quality of life for residents in West Kendall
- 70% to 80% of workers that live in West Kendall work outside the area
- Vibrant and growing community in need of additional mobility and connectivity options to support economic development



Kendall Parkway




Project Development Process

Project Development and Environment (PD&E) Study

- Develop an alternative in compliance with federal, state and local regulations and support from the local community
- Study area bounded by NW 12th Street, SW 136th Street, Krome Ave and 152nd Ave
- Over 10 corridors in the study area reviewed for engineering and environmental considerations and public feedback
- Project must be fundable and sustainable solely by toll revenue
- Outcome will be a permittable, feasible recommended alternative

LEGEND

 2020 Urban Development Boundary

 2030 Urban Expansion Area

 Corridor

 Alternate

 Potential Interchange Locations

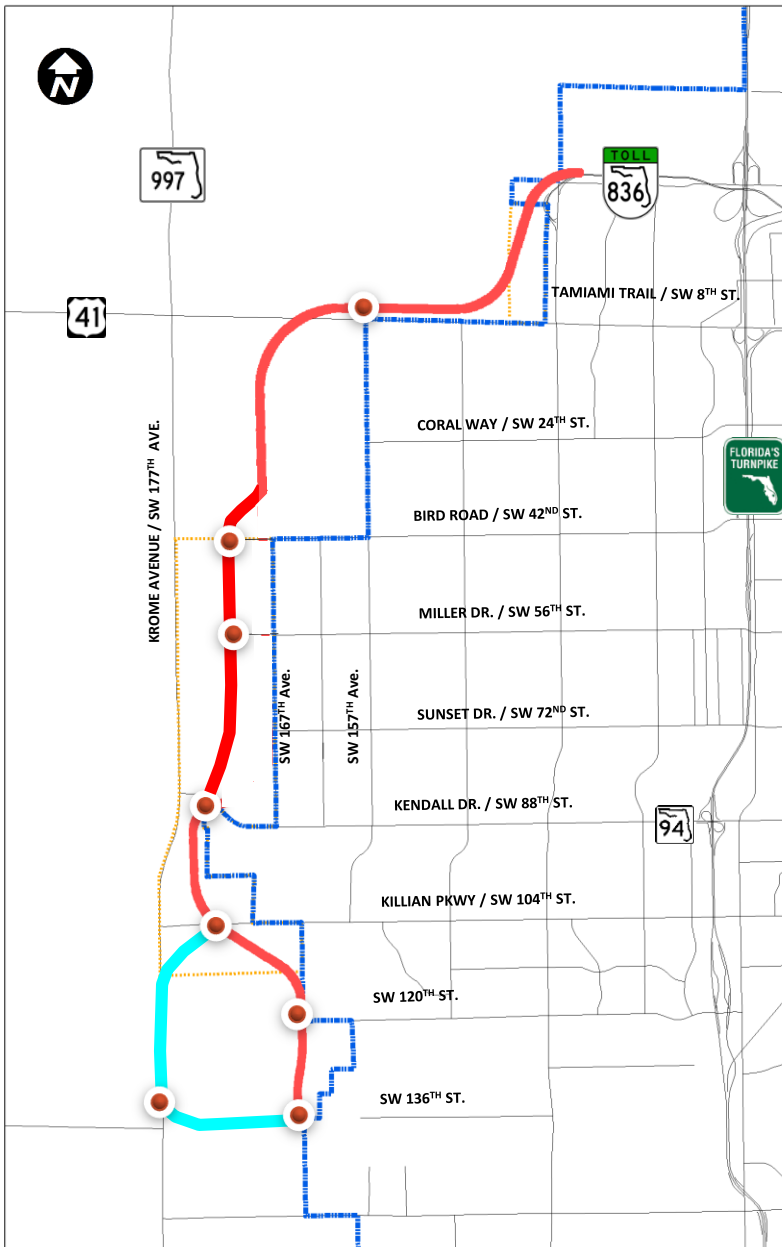
- **Unincorporated Miami-Dade**

- **Study area bounded by**

- NW 12th Street to the north
- SW 136th Street to the south
- SW 152nd Avenue to the east
- SW 177th Avenue (Krome Ave.) to the west

- **15-mile New Transportation Link**

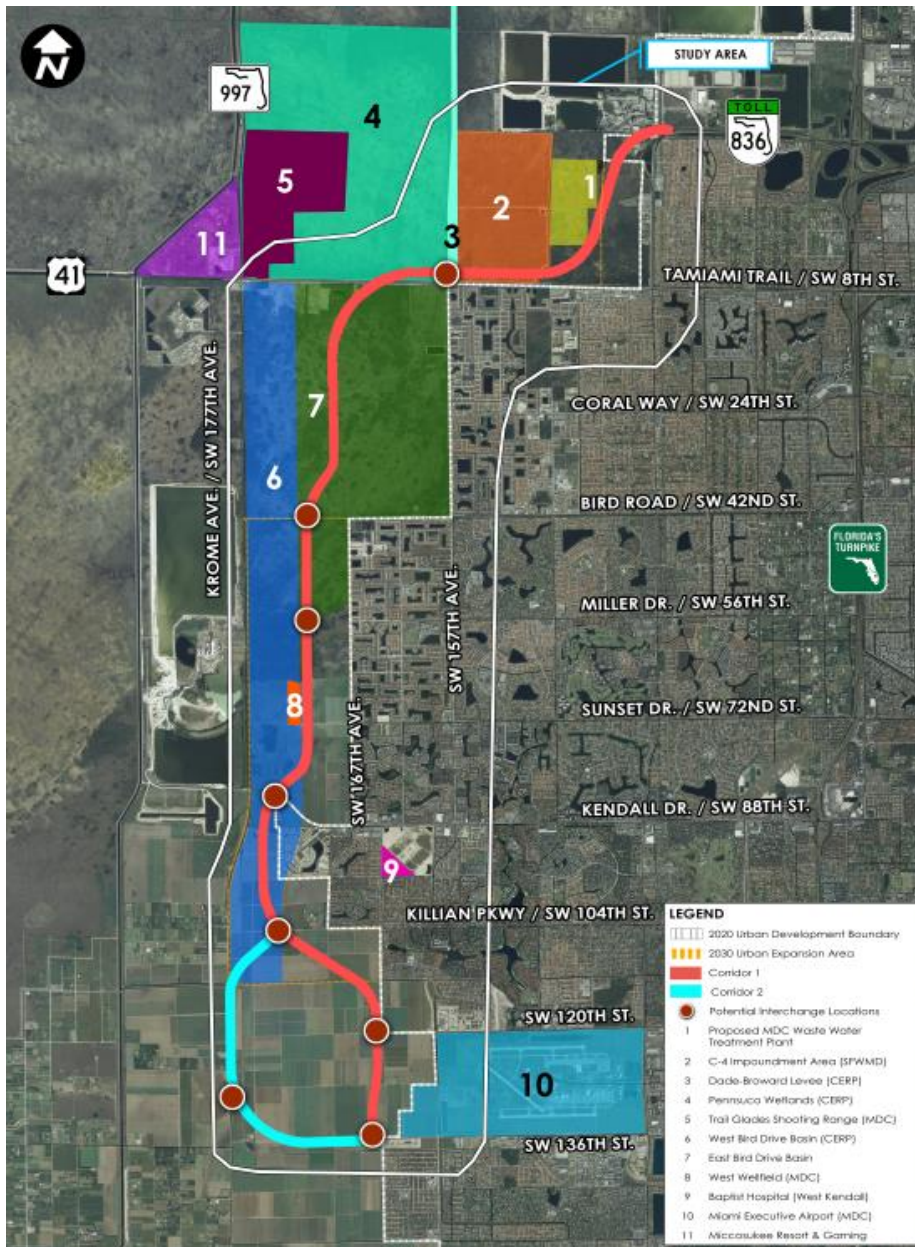
- **Multimodal corridor**



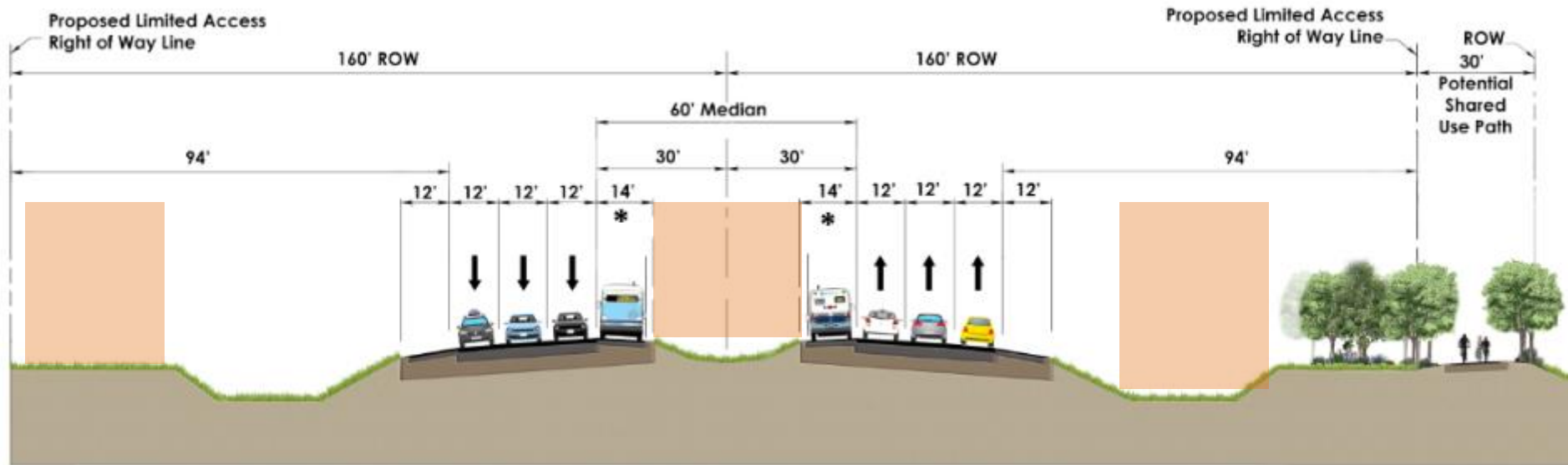
Natural & Physical Features

1. Proposed MDC Waste Water Treatment Plant (MDC)
2. C-4 Impoundment Canal Area (SFWMD)
3. Dade-Broward Levee (CERP)
4. Pensucco Wetlands (CERP)
5. Trail Glades Shooting Range
6. West Bird Drive Basin (CERP)
7. East Bird Drive Basin
8. West Wellfield (MDC)
9. West Kendall Baptist Hospital
10. Tamiami Executive Airport
11. Miccosukee Resort and Gaming

Close coordination with Comprehensive Everglades Restoration Plan (CERP) and all permitting agencies



Six Lane Typical Section



* 12-ft Inside Paved Shoulder and Peak Hour Express Transit/Technology Lane

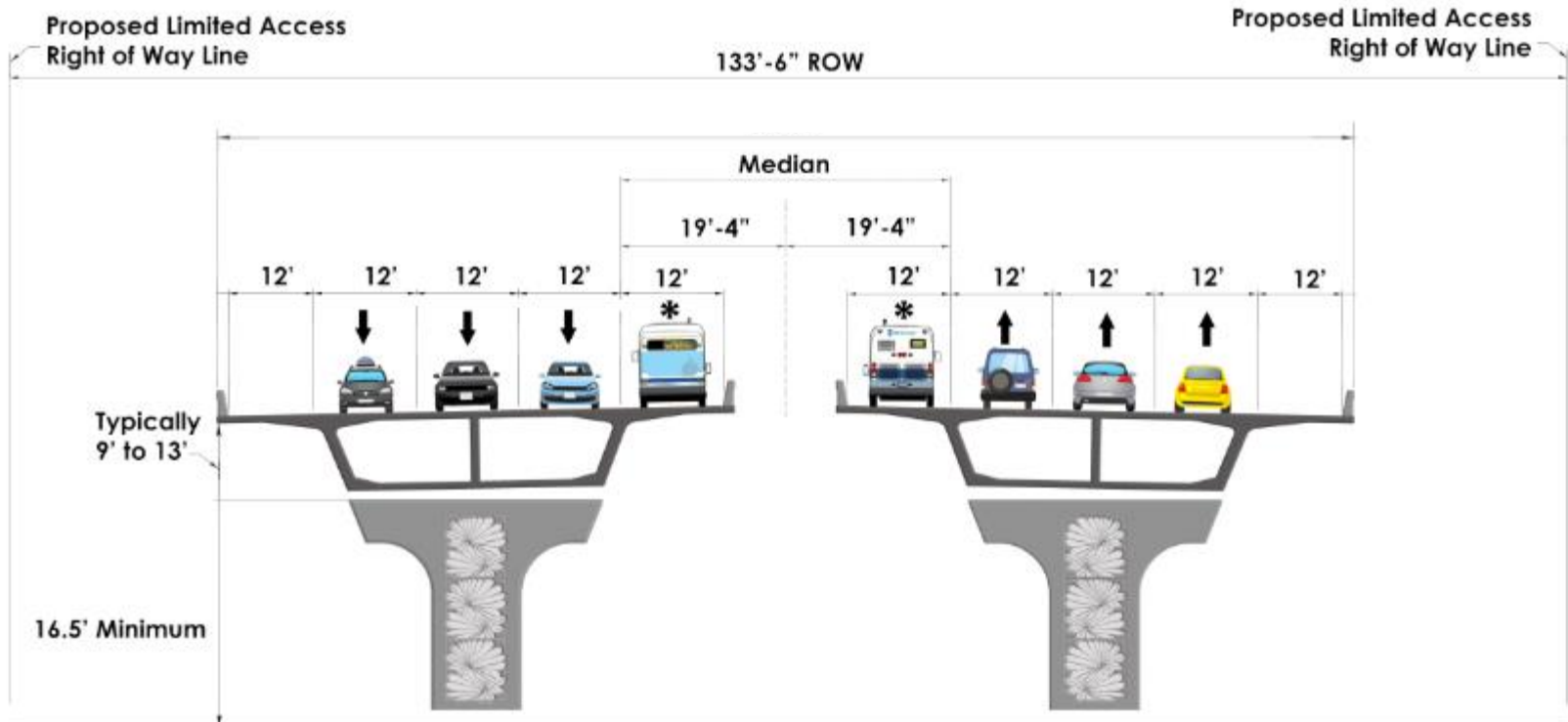
 Potential Transit Envelope

Typical Section Notes

Total ROW 350 feet Including Transit envelope and Shared Use Path

Total paved width – 124 feet

Elevated Typical Section



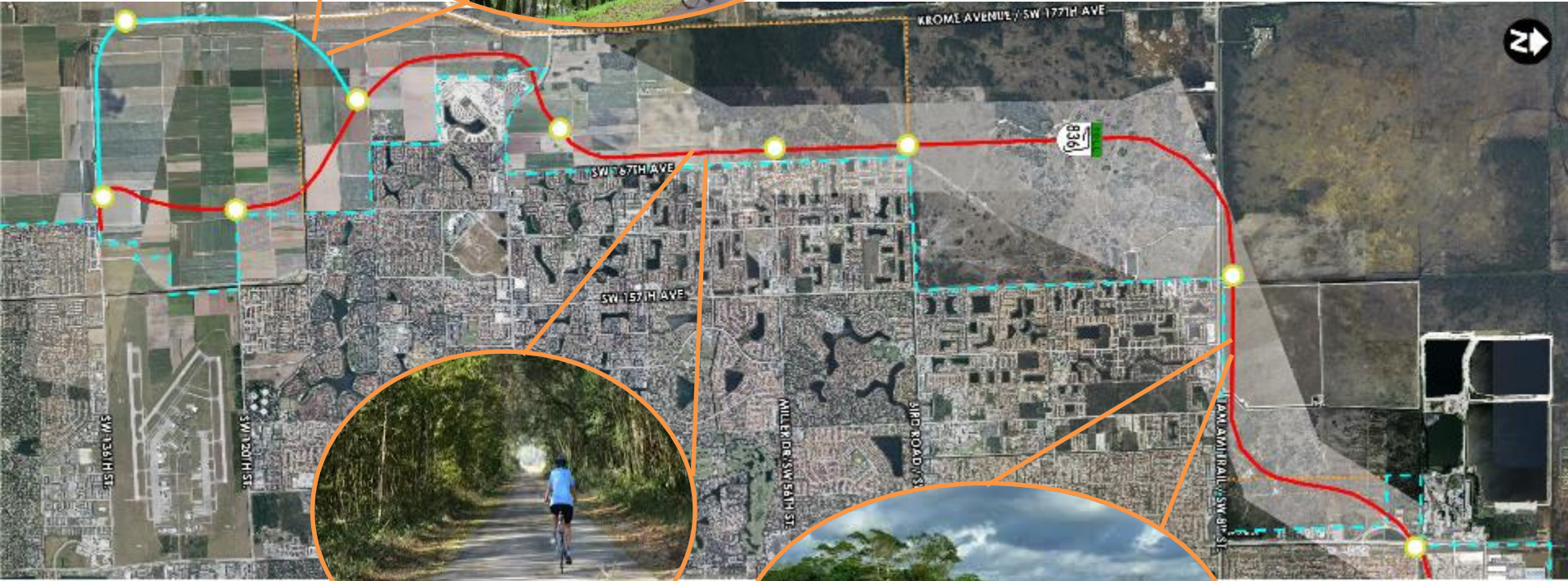
Typical Section Notes

Under consideration for use in sensitive areas as appropriate

*12-ft Inside Paved Shoulder and Peak Hour Express Transit/Technology Lane



Kendall PARKWAY



Project Benefits

- Addresses residents and businesses existing and future transportation needs, improves mobility and accessibility to the area
- Improves hurricane/emergency evacuation routes and travel times
- Decongests local arterials by splitting traffic on arterials between proposed Kendall Parkway and the Turnpike by splitting traffic
- Provides a multimodal corridor with park and ride facilities for cars, express transit services, cyclist and pedestrians
- Provides a platform to extend the East/West Corridor of the SMART Plan Southwest
- Project has received overwhelming support from the community it serves



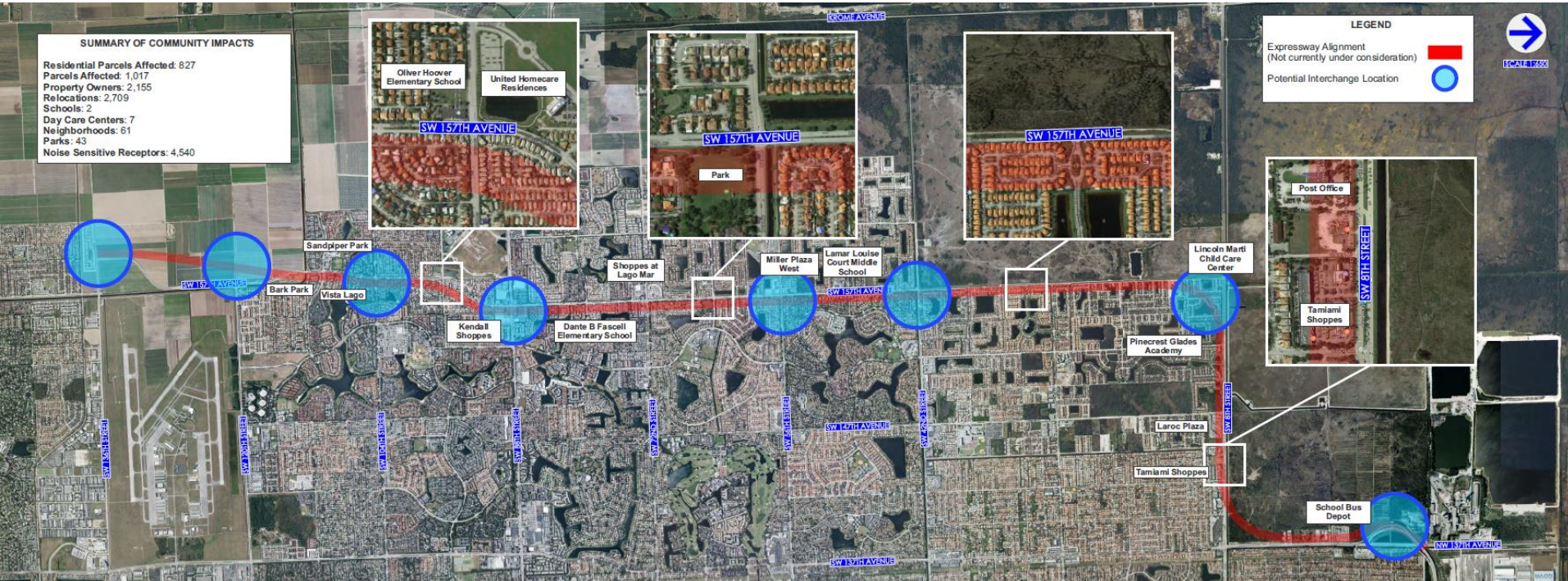
SR 836 Southwest Extension

Miami-Dade County, Florida

August 8, 2018

MDX WORK PROGRAM NO.: 83618

Alignment Not Currently Under Consideration



SUMMARY OF COMMUNITY IMPACTS

Residential Parcels Affected	Parcels Affected	Property Owners	Relocations	Schools	Daycares	Neighborhoods	Parks	Noise Sensitive Receptors
827	1017	2155	2709	2	7	61	43	4540

MDX WORK PROGRAM NO.: 83618