



2016 Supplemental Summary

Statewide Regional Evacuation Study

APPENDIX C - MONROE COUNTY

This document contains summaries (updated in 2016) of the following chapters of the 2010 Volume 1-11 Technical Data Report:

Chapter 1: Regional Demographics

Chapter 2: Regional Hazards Analysis

Chapter 4: Regional Vulnerability and Population Analysis

Funding provided by the Florida
Division of Emergency Management

Work completed by the
South Florida Regional Council



This page intentionally left blank.

TABLE OF CONTENTS
APPENDIX C – MONROE COUNTY

	Page
A. Introduction	1
B. Small Area Data	1
C. Demographic Trends	4
D. Census Maps	9
E. Hazard Maps	15
F. Critical Facilities Vulnerability Analysis.....	23

List of Tables

Table 1	Small Area Data	1
Table 2	Health Care Facilities Vulnerability Assessment	25
Table 3	Other Critical Facilities Vulnerability Assessment	26

List of Maps

Map B1	Site Built Home Density	2
Map B2	Mobile Home Density	3
Map D1	Population Density.....	10
Map D2	Population Over 65.....	11
Map D3	Total Vehicle Density	12
Map D4	Population Below Poverty.....	13
Map D5	Limited English Speaking Households	14
Map E1	Storm Tide Surge Zones	16
Map E2	Evacuation Zones	17
Map E3	FEMA Flood Zones	19
Map E4	Potential Roadway Flooding	20
Map E5	Wildfire Level of Concern	22
Map F1	Selected Critical Facilities	24

This page intentionally left blank.

A. Introduction

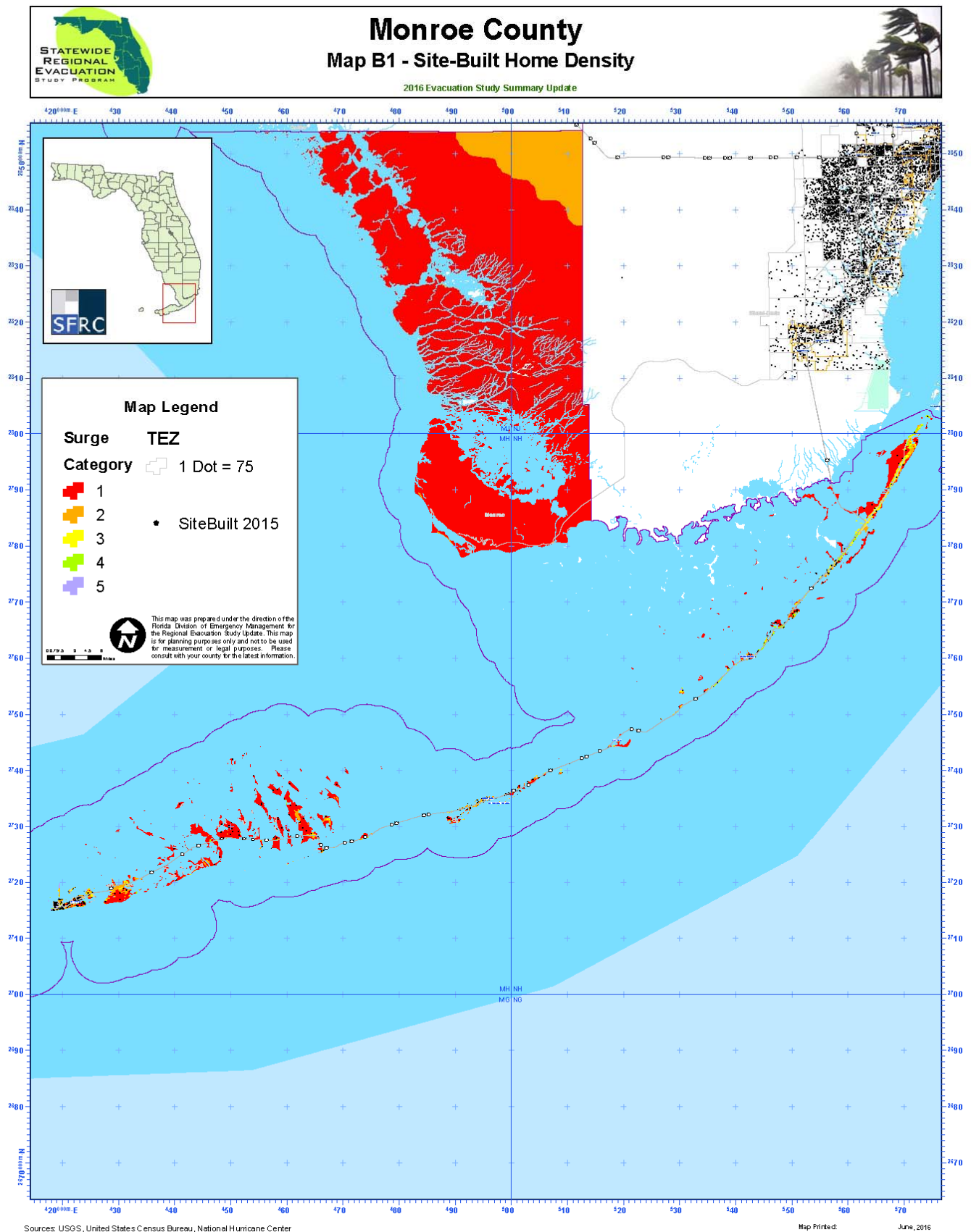
This appendix provides a County Demographic Profile, Vulnerability Profile and a more detailed vulnerability analysis of critical facilities and corresponding maps.

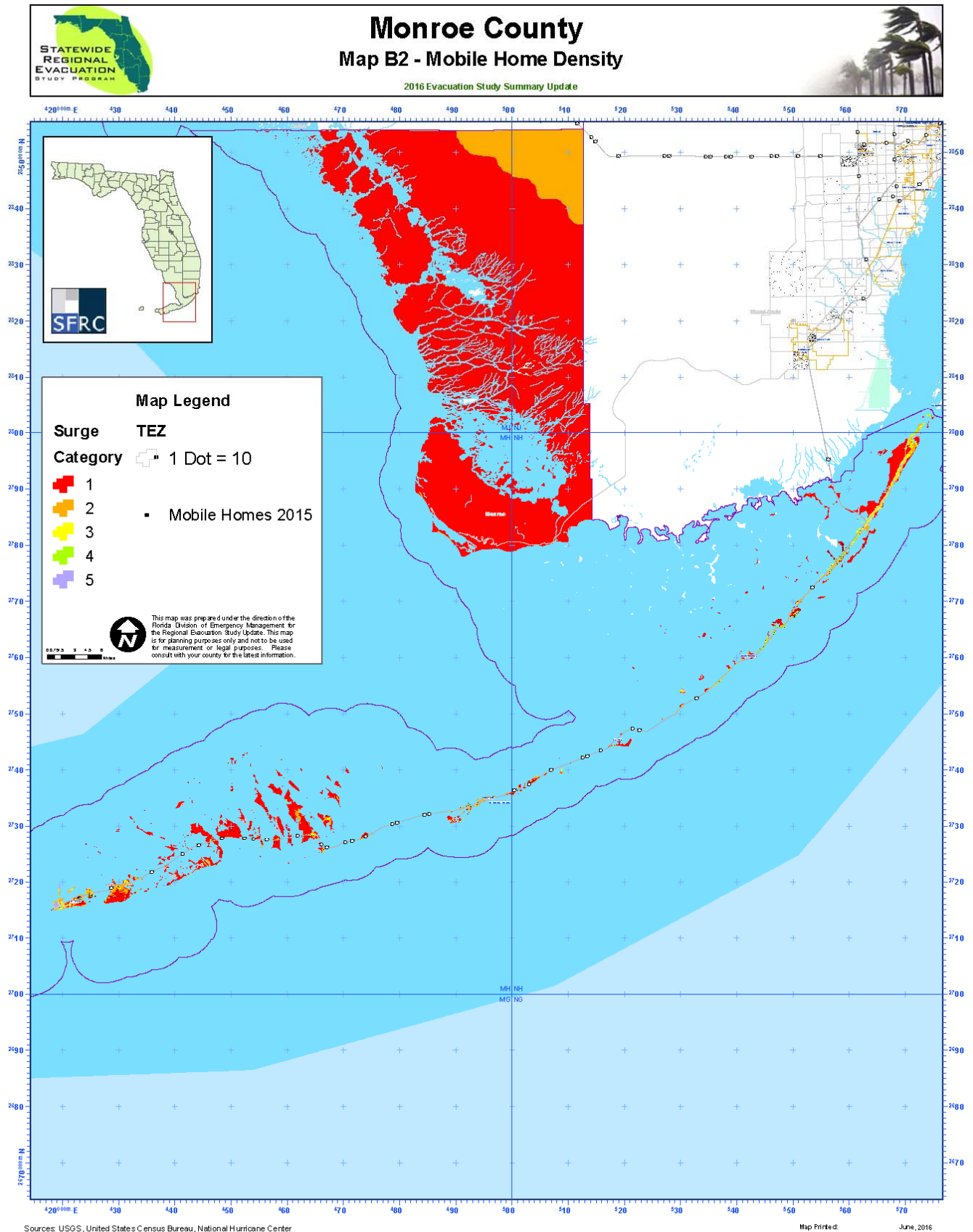
B. Small Area Data

Small Area Data is used with the Regional Evacuation Transportation Model. The data is gathered for three time periods – 2010, 2015 and 2020. This data is centered on housing units and provides for the number of site-built and mobile homes in each County. The maps below depict the density of both site built homes and mobile homes in Monroe County.

Table B1. Small Area Data

	2010	2015	2020
Total Dwelling Unit Site-Built Homes	44,631	46,265	48,782
Occupied Site-Built Homes	28,028	28,674	30,108
Population in Site-Built Homes	61,126	69,094	72,631
Vehicles in Site-Built Homes	44,036	45,398	47,779
Total Dwelling Unit Mobile Homes	8,133	7,523	6,886
Occupied Mobile Homes	4,601	4,483	4,137
Population in Mobile Homes	9,944	10,052	9,340
Vehicles in Mobile Homes	7,232	7,064	6,491
Hotel-Motel Units	13,765	13,751	13,751
Population in Hotel-Motel Units	35,103	35,068	35,068
Vehicles in Hotel-Motel Units	12,872	12,859	12,859

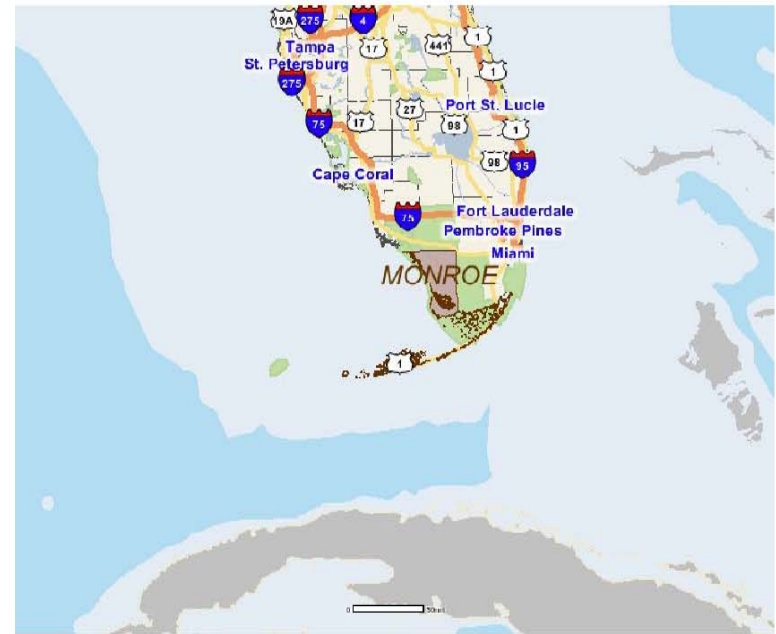
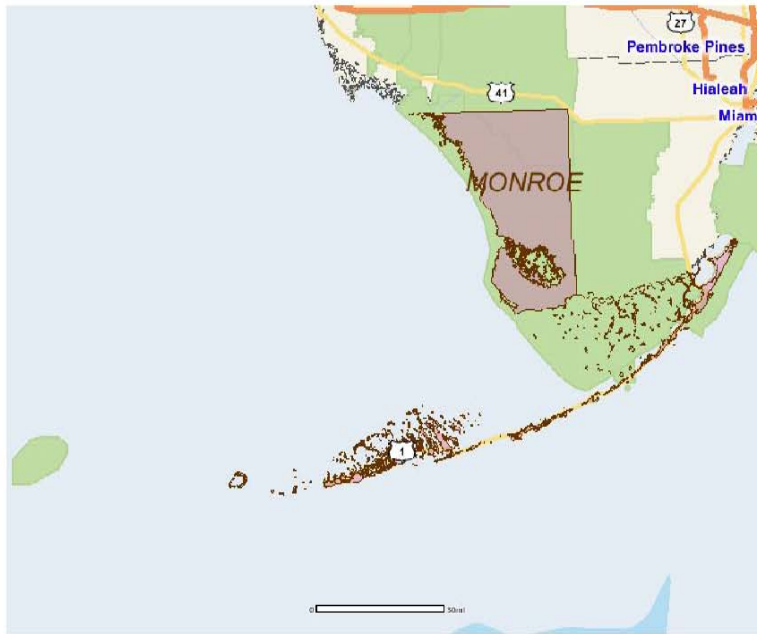




C. Demographic Trends

This section of the report, and the data contained herein, is provided to capture a profile of the county including population **trends** not previously discussed in the regional demographics overview. The County Profiles are compiled by Florida Department of Transportation and can be found online at <https://etdmpub.flh-dot.org/est/>.

STATEWIDE REGIONAL EVACUATION STUDY – SOUTH FLORIDA
APPENDIX C – MONROE COUNTY



County Demographic Profile

Monroe

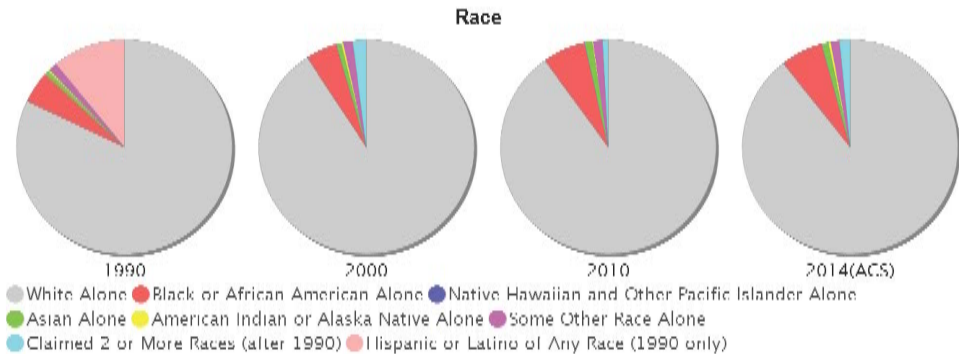
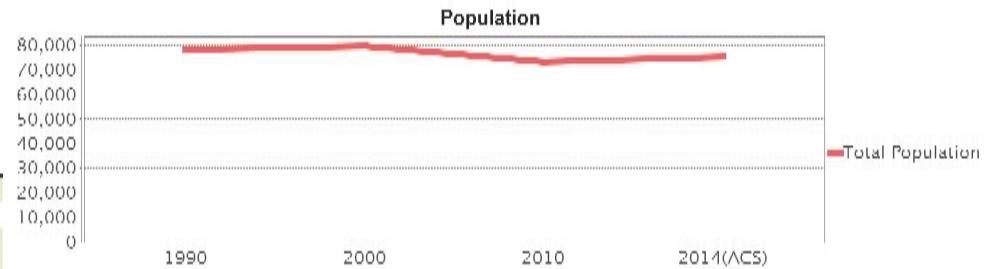
Area: 1,064.309 square miles
Jurisdiction(s): Cities: NA

General Population Trends

Description	1990	2000	2010	2014(ACS)
Total Population	78,024	79,589	73,065	75,208
Total Households	33,583	35,086	29,791	28,418
Average Persons per Acre	0.117	0.117	0.107	0.11
Average Persons per Household	2.323	2.229	2.00	2.57
Average Persons per Family	2.80	2.828	3.126	3.361
Males	40,976	42,327	38,795	39,931
Females	37,048	37,262	34,270	35,277

Race and Ethnicity Trends

Description	1990	2000	2010	2014(ACS)
White Alone	71,840 (92.07%)	72,214 (90.73%)	65,742 (89.98%)	67,153 (89.29%)
Black or African American Alone	4,203 (5.39%)	3,760 (4.72%)	4,698 (6.43%)	4,826 (6.42%)
Native Hawaiian and Other Pacific Islander Alone	(NA)	35 (0.04%)	48 (0.07%)	5 (0.01%)
Asian Alone	576 (0.74%)	566 (0.71%)	802 (1.10%)	746 (0.99%)
American Indian or Alaska Native Alone	258 (0.33%)	262 (0.33%)	107 (0.15%)	280 (0.37%)
Some Other Race Alone	1,093 (1.40%)	1,113 (1.40%)	1,066 (1.46%)	1,003 (1.33%)
Claimed 2 or More Races	(NA)	1,639 (2.06%)	602 (0.82%)	1,195 (1.59%)
Hispanic or Latino of Any Race	9,580 (12.28%)	12,500 (15.71%)	14,324 (19.60%)	16,306 (21.68%)
Not Hispanic or Latino	68,444 (87.72%)	67,089 (84.29%)	58,741 (80.40%)	58,902 (78.32%)
Minority	21,001 (26.92%)	18,062 (22.69%)	21,001 (28.74%)	22,893 (30.44%)

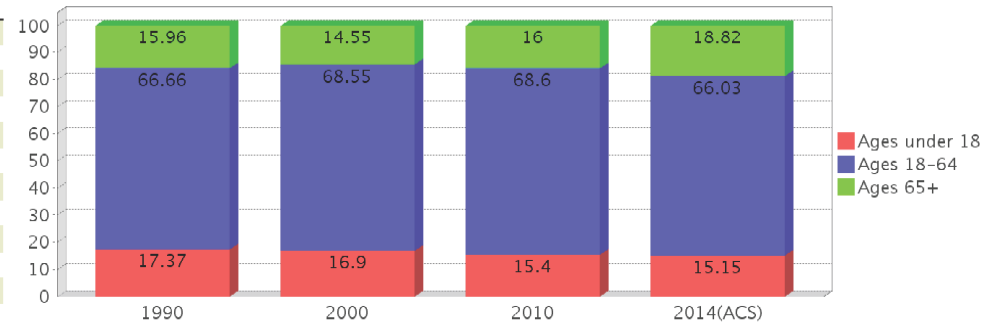


STATEWIDE REGIONAL EVACUATION STUDY – SOUTH FLORIDA
APPENDIX C – MONROE COUNTY

Age Trends

Description	1990	2000	2010	2014(ACS)
Under Age 5	5.73%	4.13%	4.31%	4.52%
Ages 5-17	11.64%	12.77%	11.09%	10.63%
Ages 18-21	3.98%	3.31%	3.76%	3.87%
Ages 22-29	12.15%	9.10%	9.65%	9.34%
Ages 30-39	18.63%	15.57%	12.80%	12.59%
Ages 40-49	14.63%	19.15%	15.59%	14.03%
Ages 50-64	17.28%	21.43%	26.80%	26.20%
Age 65 and Over	15.96%	14.55%	16.00%	18.82%
-Ages 65-74	10.53%	8.88%	9.64%	11.75%
-Ages 75-84	4.54%	4.67%	4.91%	4.91%
-Age 85 and Over	0.89%	0.99%	1.45%	2.16%
Median Age	NA	43	46	47

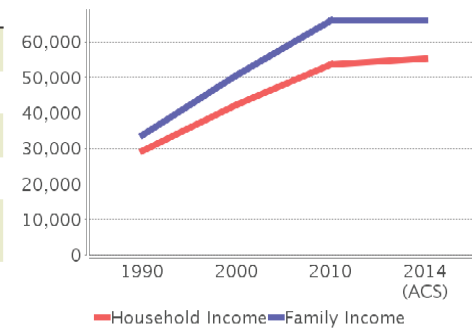
Population by Age Group



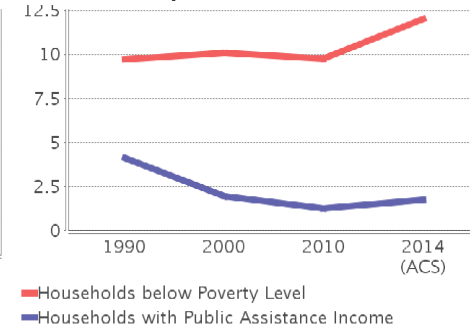
Income Trends

Description	1990	2000	2010	2014(ACS)
Median Household Income	\$29,351	\$42,283	\$53,821	\$55,449
Median Family Income	\$33,906	\$50,734	\$66,152	\$66,098
Population below Poverty Level	10.77%	10.18%	10.76%	13.90%
Households below Poverty Level	9.70%	10.09%	9.78%	12.00%
Households with Public Assistance Income	4.13%	1.95%	1.24%	1.75%

Income Trends



Poverty and Public Assistance



Disability Trends

See the Data Sources section below for an explanation about the differences in disability data among the various years.

Description	1990	2000	2010	2014(ACS)
Population 16 To 64 Years with a disability	4,278 (6.86%)	13,281 (17.92%)	NA (NA)	NA (NA)
Population 20 To 64 Years with a disability	NA (NA)	NA (NA)	NA (NA)	5,104 (10.70%)

STATEWIDE REGIONAL EVACUATION STUDY – SOUTH FLORIDA

APPENDIX C – MONROE COUNTY

Educational Attainment Trends

Age 25 and Over

Description	1990	2000	2010	2014(ACS)
Less than 9th Grade	4,478	2,827	1,946	2,331
9th to 12th Grade, No Diploma	7,404	6,405	3,830	3,273
High School Graduate or Higher	46,703	51,929	50,858	52,642
Bachelor's Degree or Higher	11,901	15,583	16,278	17,289

Language Trends

Age 5 and Over

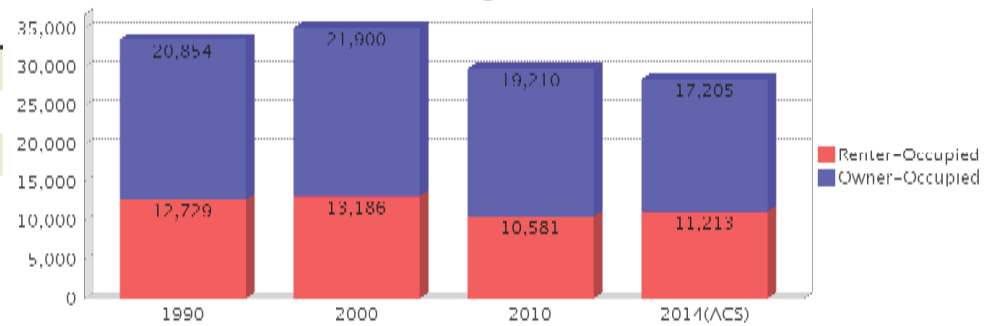
Description	1990	2000	2010	2014(ACS)
Speaks English Well	2,285	2,777	3,301	3,336
Speaks English Not Well	NA	2,566	2,127	2,680
Speaks English Not at All	NA	994	1,206	1,071
Speaks English Not Well or Not at All	2,289	3,560	3,333	3,751

Housing Trends

Description	1990	2000	2010	2014(ACS)
Total	46,215	51,617	52,847	52,861
Units per Acre	0.07	0.076	0.078	0.078
Single-Family Units	17,113	28,415	32,311	31,297
Multi-Family Units	8,250	12,609	12,442	13,410
Mobile Home Units	6,791	9,814	7,919	8,022
Owner-Occupied Units	20,854	21,900	19,210	17,205
Renter-Occupied Units	12,729	13,186	10,581	11,213
Vacant Units	12,632	16,531	23,056	24,443
Median Housing Value	\$147,800	\$195,700	\$503,900	\$379,700
Occupied Housing Units w/No Vehicle	3,393 (10.10%)	3,137 (8.94%)	2,399 (8.05%)	2,175 (7.65%)

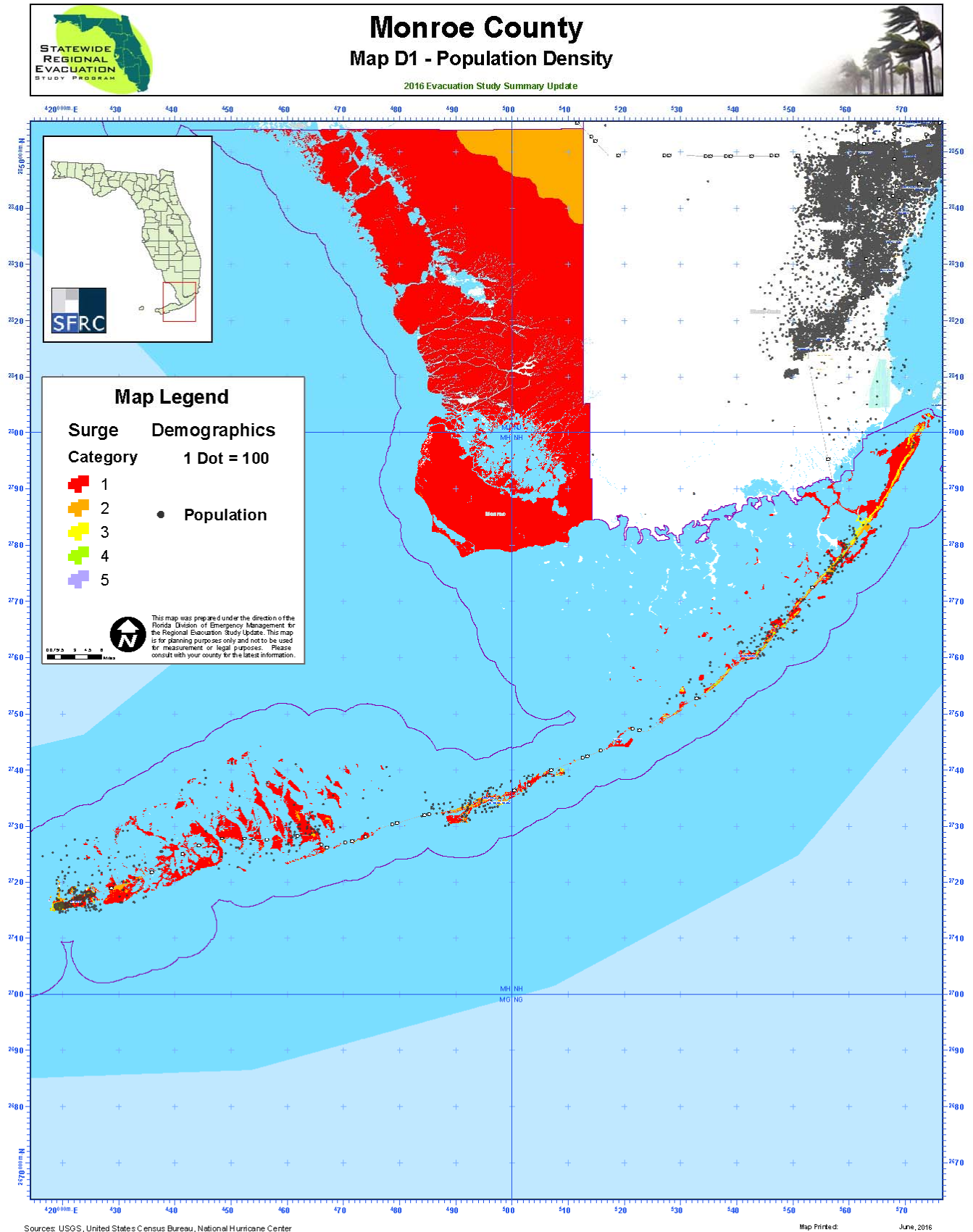
Location Maps

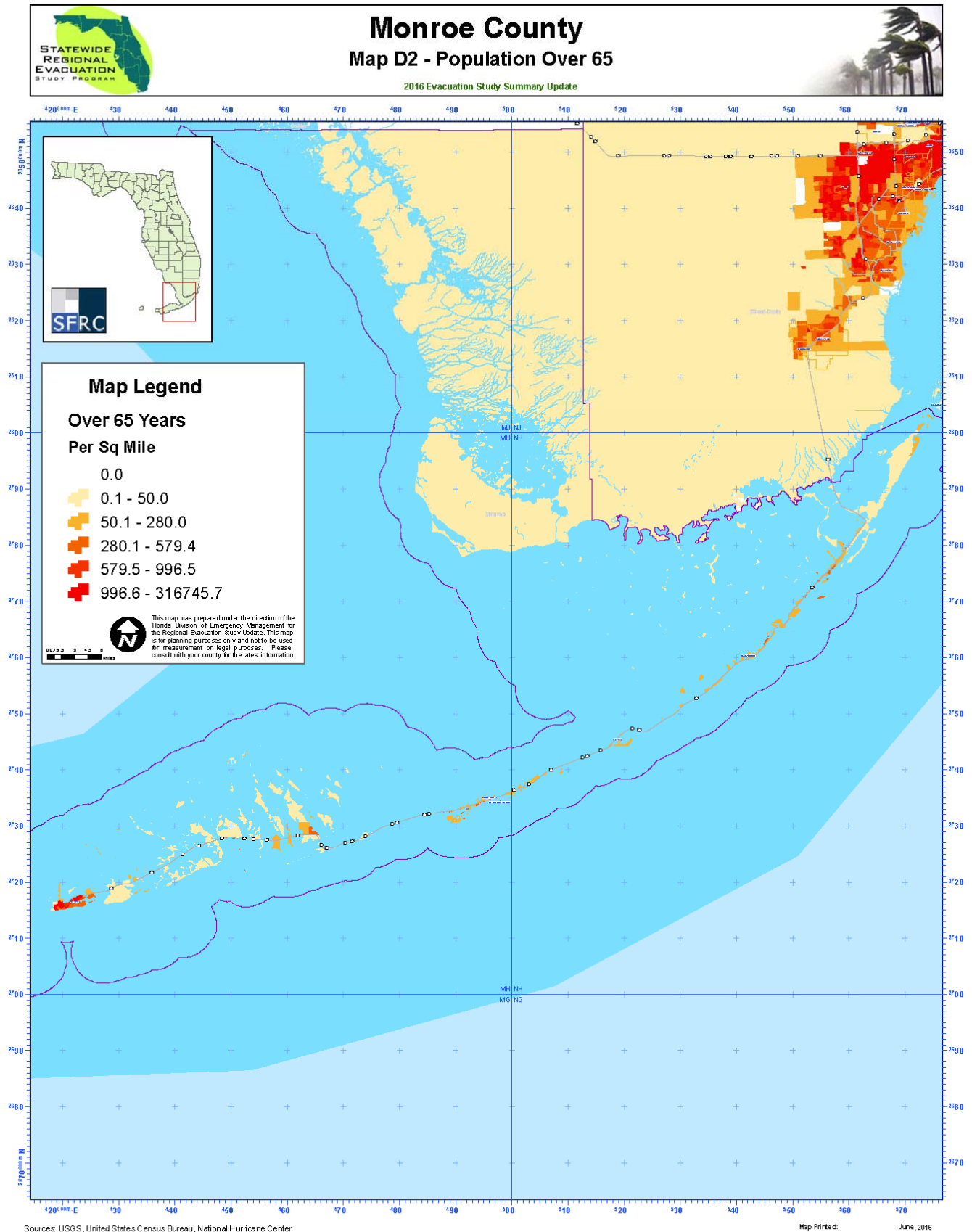
Housing Tenure

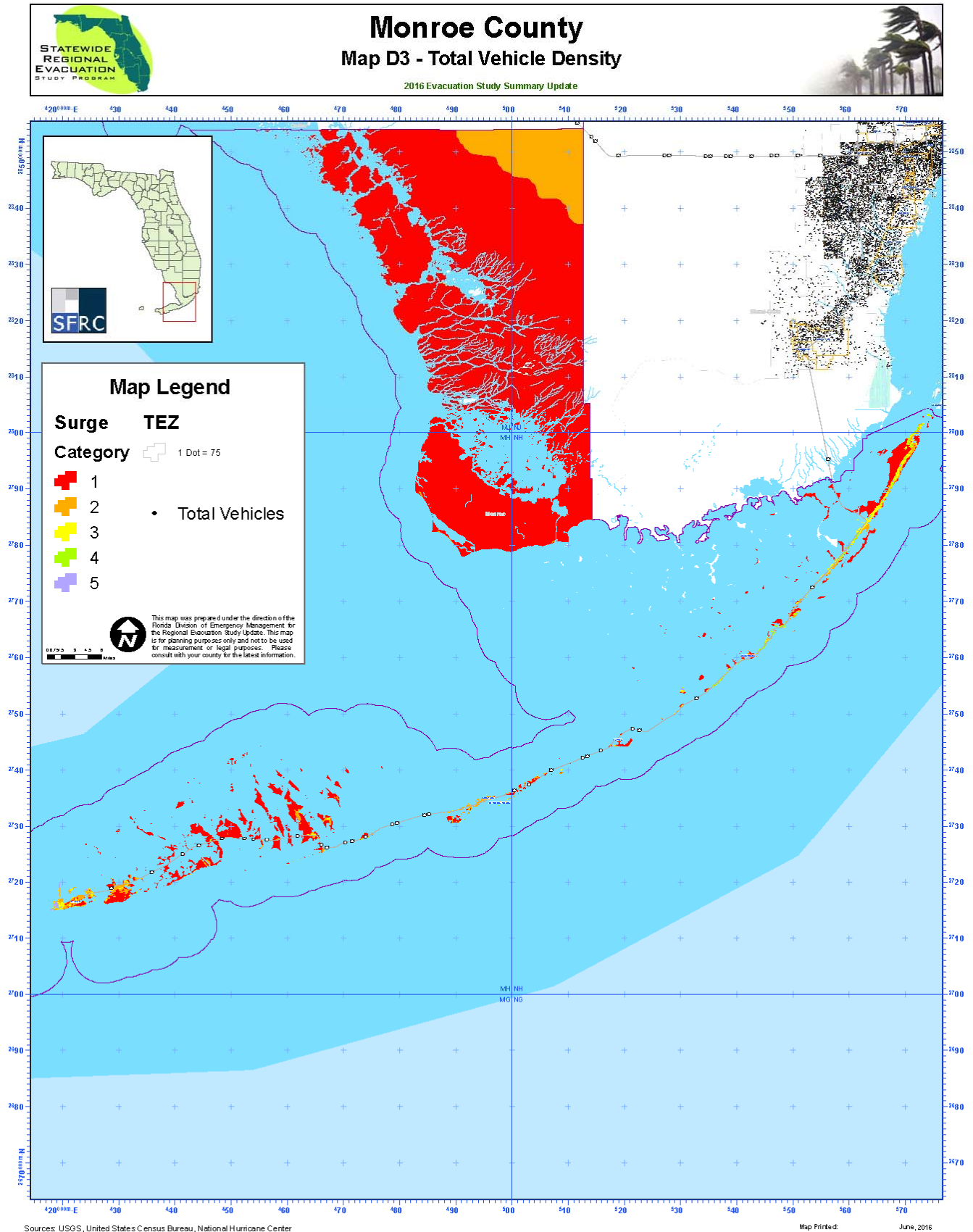


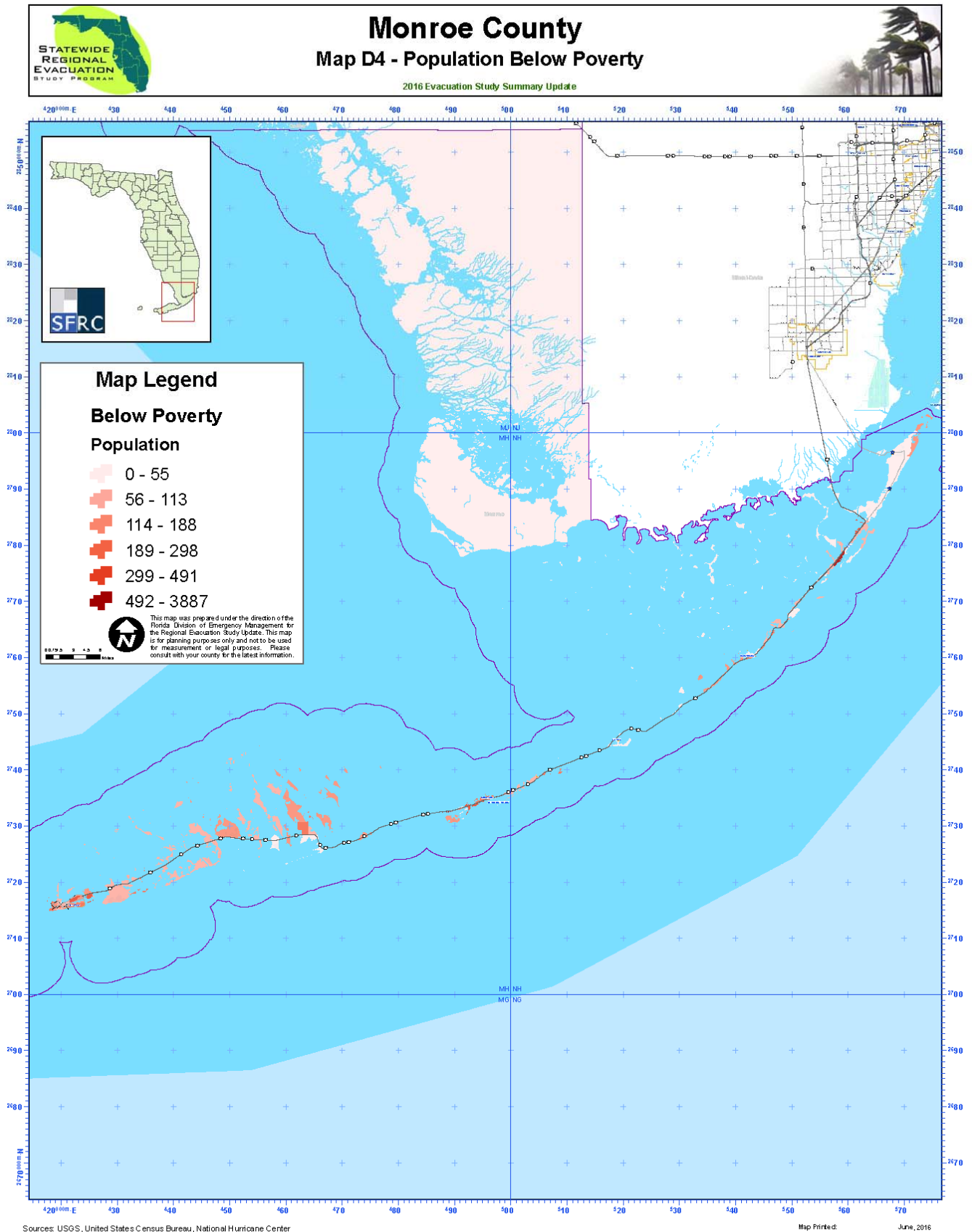
D. Census Maps

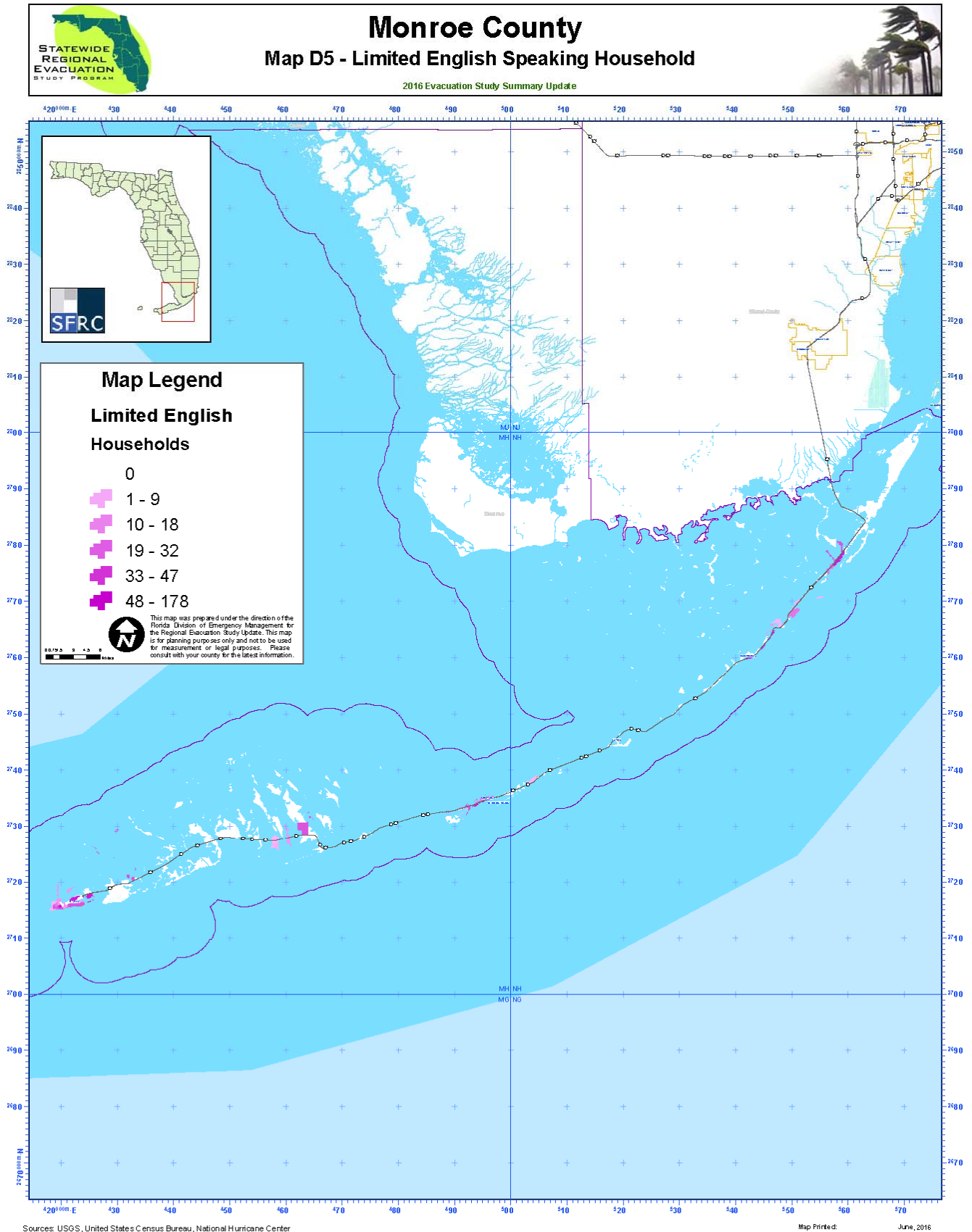
The maps that follow depict a graphical representation of the key demographics that affect an evacuation in a County.









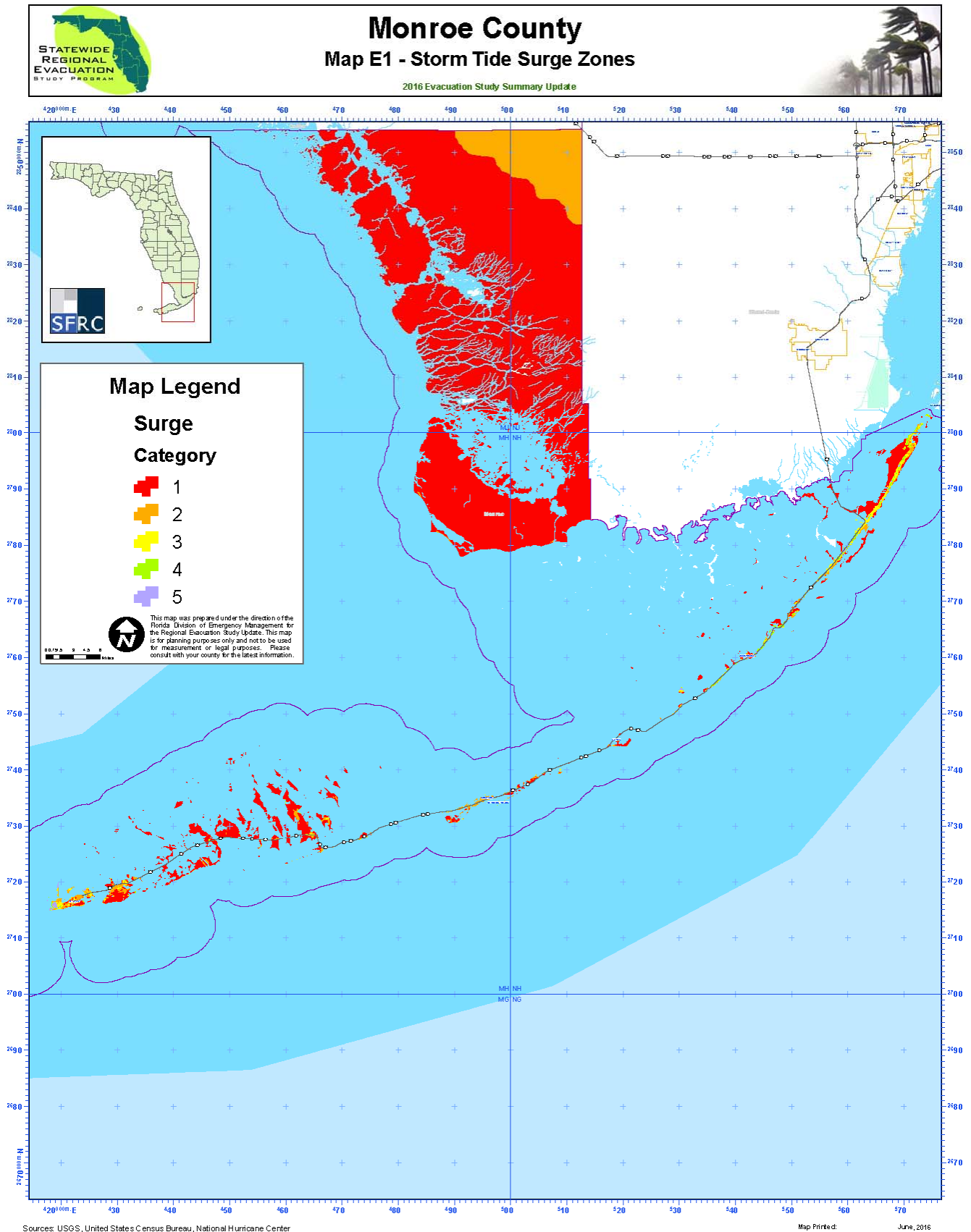


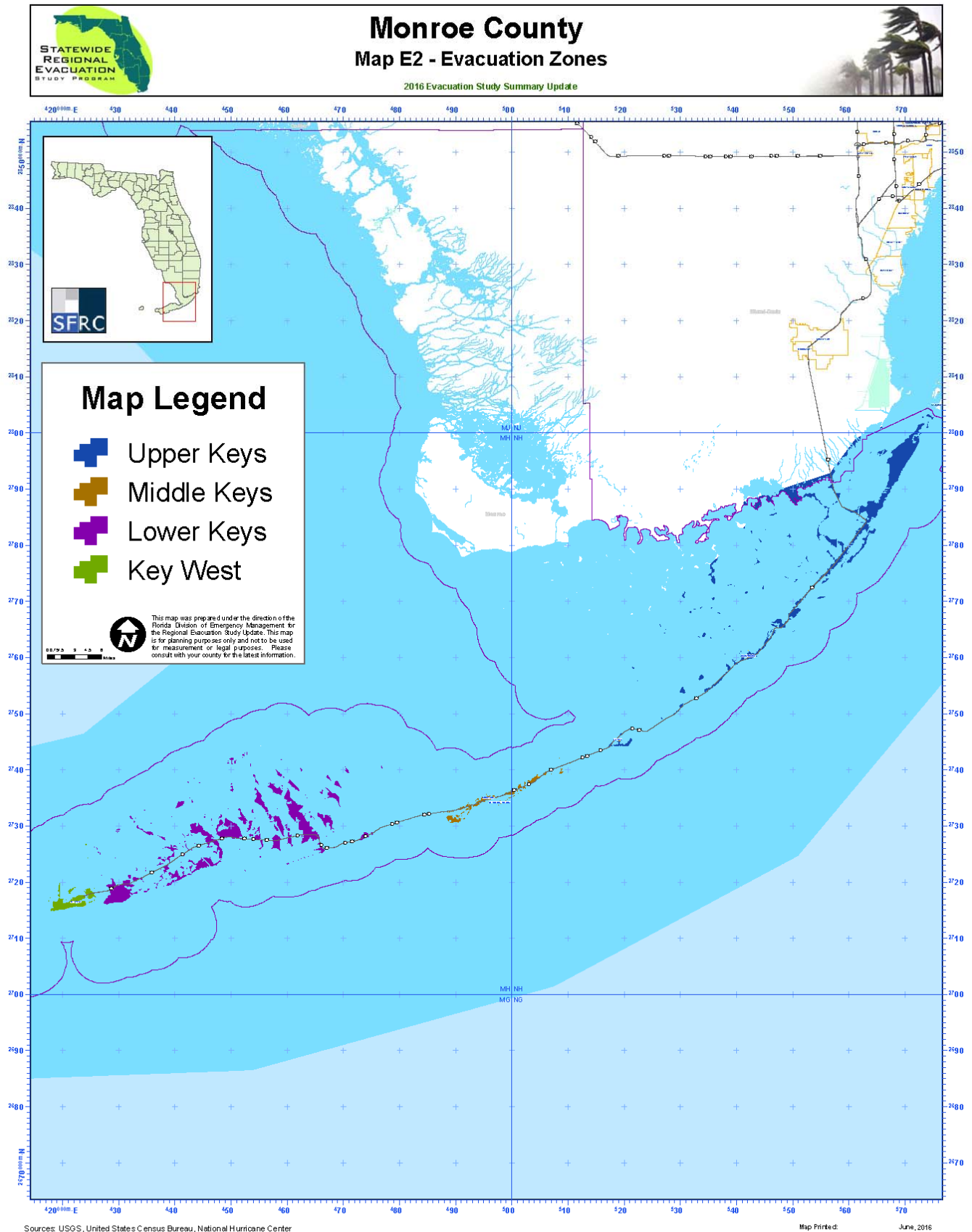
E. Hazard Maps

The Regional Evacuation Study includes not only an analysis of Storm Surge, but FEMA-defined Flood Zones as well as the Wildfire Risk in each County.

Storm Surge

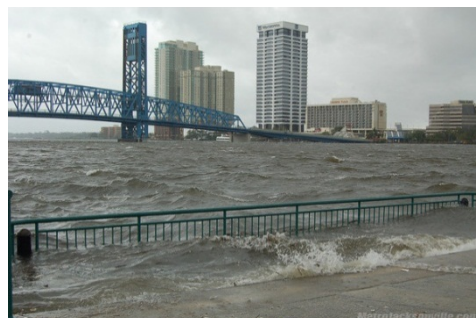
Storm surge is the abnormal rise in water level caused by the wind and pressure forces of a hurricane or tropical storm. Storm surge produces most of the flood damage and drowning associated with storms that make landfall or that closely approach the coastline. Of the hurricane hazards, storm surge is considered the most dangerous, as nine out of ten hurricane-related deaths are caused by drowning. The County storm tide surge zones and evacuation zones can be found in Maps E1 and E2 below.





Freshwater Flooding and the Inundation of Evacuation Routes

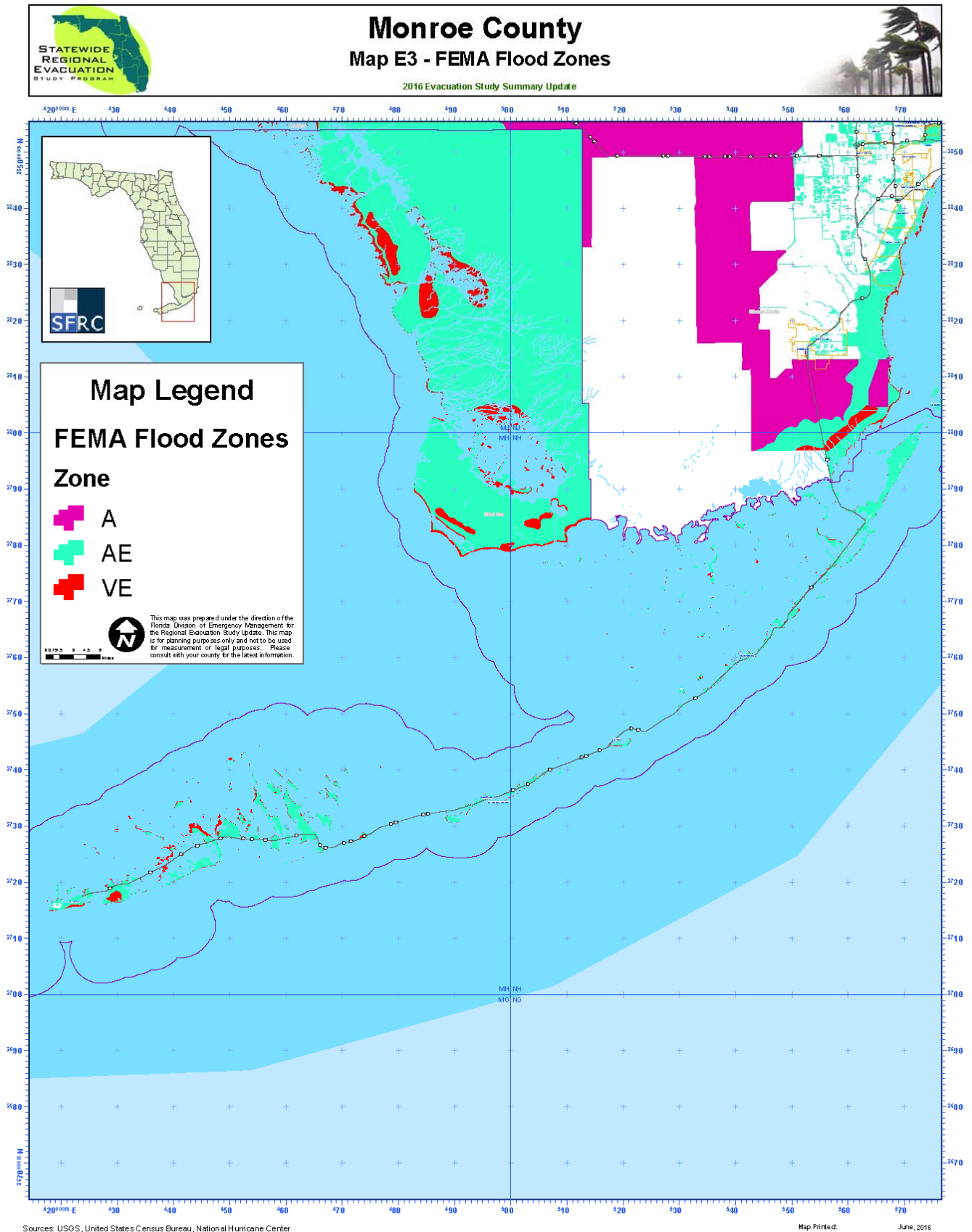
Inland Riverine and freshwater flooding often becomes a significant factor as a result of tropical storms and hurricanes. Unlike storm surge, the rainfall associated with, and in advance of, a hurricane does not necessitate the emergency evacuation of residents during the passage of a hurricane. Following a storm, however, the coastal flooding and rainfall – particularly from slow moving storms – necessitates an evacuation of flooded inland resident's days after, as swollen rivers and streams breach their banks or levees.

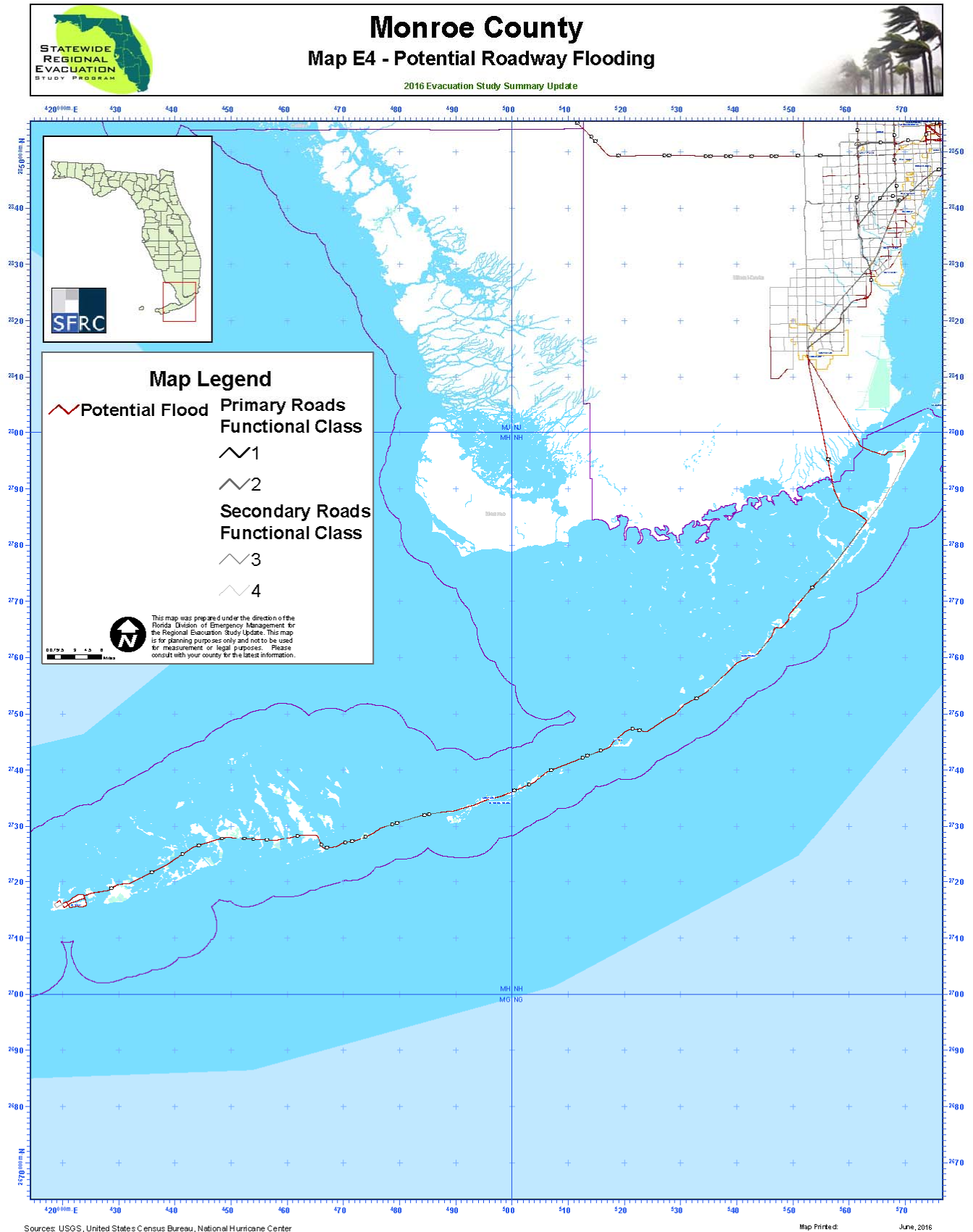


Regarding hurricane evacuation, however, rainfall may cause the early inundation of roadways sought as evacuation routes by vehicles attempting to escape from areas vulnerable to the approaching storm surge. In addition, given Florida climatology and the normal summer weather, flooding may occur as a disassociated event prior to the hurricane, flooding evacuation routes, and saturating the ground. FEMA defined Flood Zones are presented in Map E3 below.

Rainwater inundation of evacuation routes must be addressed in an evacuation plan. The planning strategy to address this problem is to plan for the passage of all vehicles over such roadways before substantial rainfall from the hurricane was expected to arrive. Hourly records of rainfall rates and accumulation for past hurricanes indicate that rates high enough to surpass drainage capabilities normally parallel in time the arrival of sustained tropical storm-force winds. Utilizing this as an assumption of the timing of freshwater roadway inundation, the pre-landfall hazards time quantification for sustained tropical storm-force winds will also compensate for early rainfall inundation of evacuation routes.

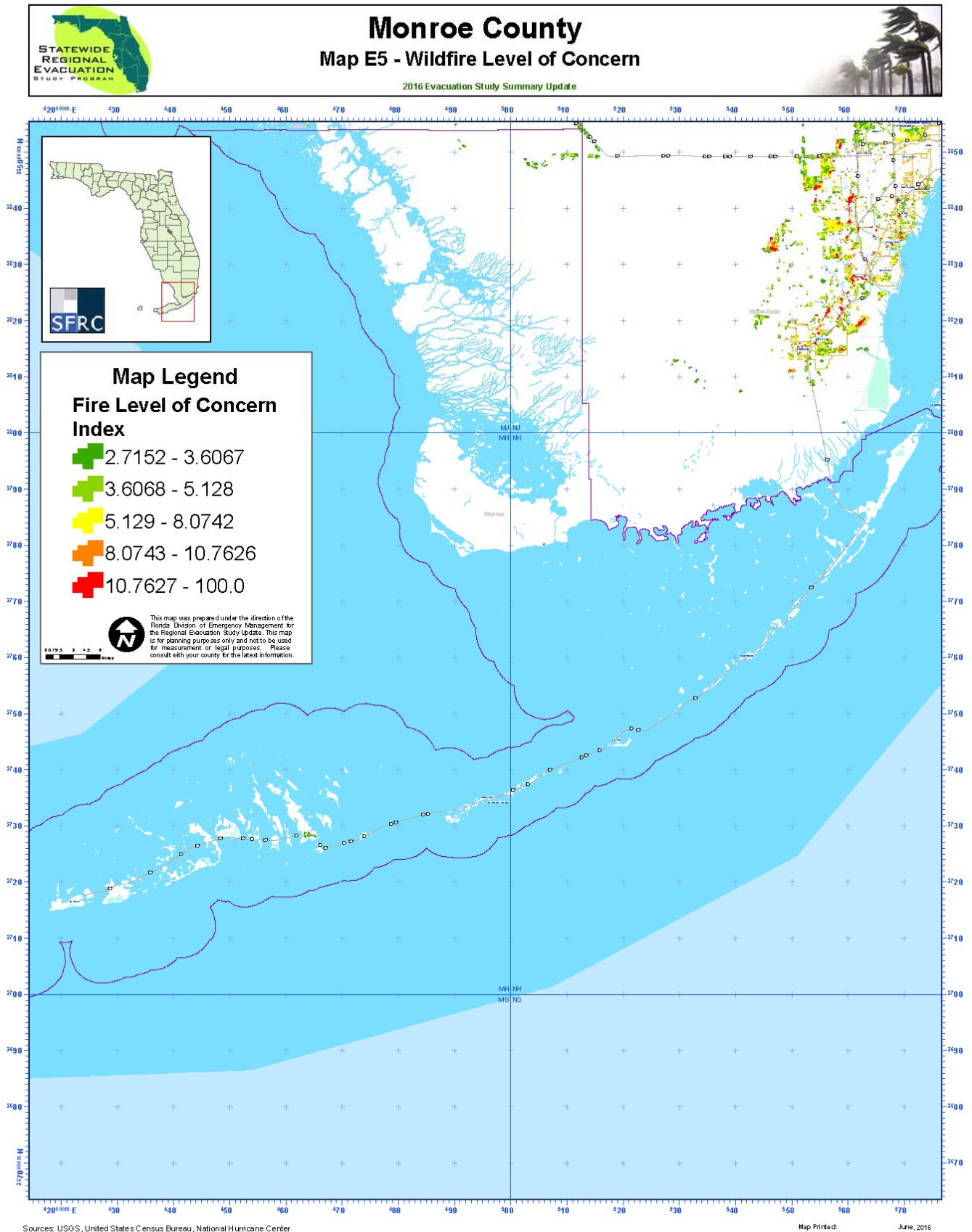
Those roadways known historically to be vulnerable from freshwater flooding have been identified by the county and municipal emergency management/law enforcement/ emergency response personnel. These routes, including those which were inundated or forced to close during recent flooding events or are within a 100-Year Flood Plain as identified by FEMA, are presented in Map E4 below.





Wildfire

In the last decade, there have been on average 3,361 wildfires a year throughout the State of Florida (Florida Forest Service, 2011). Although fire is a naturally occurring element in Florida ecosystems, the continued development of housing and infrastructure within wildland areas and forests presents a wildfire hazard that will continue to escalate as residential development continues to encroach on natural areas.



F. Critical Facilities Analysis

Since the release of the original Regional Evacuation Study Program as part of the statewide update in 2010, the Florida Division of Emergency Management (FDEM) has maintained a critical facilities database for the entire State. FDEM coordinates the update and maintenance of this data.

The Critical Facility Inventory (Data base) includes a comprehensive list of critical facilities identified by the State and County Emergency Management Agencies. This inventory is not published as part of the report. However, selected facilities that may require evacuation or mitigation are identified in Map F1 and Tables 1 and 2. The tables indicate vulnerability from storm surge (based on the SLOSH model), location in an Evacuation Zone, freshwater flooding (based on the FEMA Flood Maps) and wildfire (Wildfire Interface/Levels of Concern).

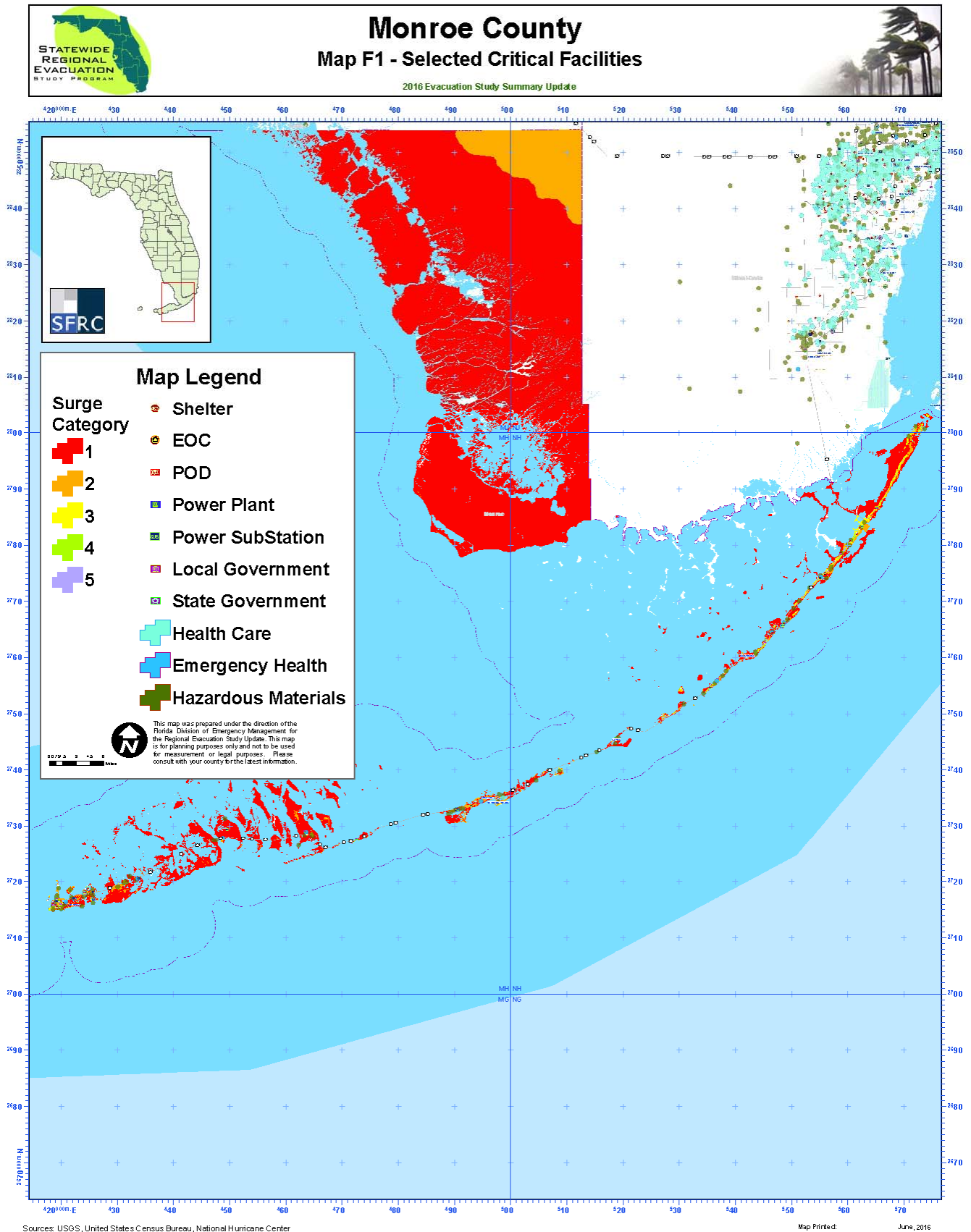


Table 2
Health Care Facilities Vulnerability Assessment – Facilities with at Least One Risk Factor

Name	Address	City	Zip	DEM Elev ¹	Surge	Evac Zone	Flood	Fire	Facility Type
SURGERY CENTER OF KEY WEST, LLC	931 TOPPINO DR	Key West	33040	2.45	1	1	AE		Ambulatory Surgical Center
Bayshore Manor Convalescent Center (BAYSHORE MANOR)	5200 COLLEGE ROAD	Key West	33040	3.51	2	1	AE		Assisted Living Facility
HERON HOUSE	67 COCO PLUM DRIVE	Marathon		5.09	2	3	AE		Assisted Living Facility
GUIDANCE/CARE CENTER	3000 41ST STREET OCEAN	Marathon		2.35	2	3	AE		Crisis Stabilization Unit
BIG COPPIT FIRE ST 9 (Medical 3 Station)	28 EMERALD DR	Key West	33040	7.40	3	2	AE		Emergency Medical Service
BIG PINE VOLUNTEER FIRE STATION ST 13 (Big Pine Vol Fire Station/EMS #13)	400 KEY DEER BLVD	Big Pine Key	33043	3.29	1	2	AE		Emergency Medical Service
ISLAMORADA FIRE RESCUE	89990 OVERSEAS HIGHWAY	Tavernier	33070	6.01	2	4	AE		Emergency Medical Service
ISLAMORADA FIRE ST 20 (ISLAMORADA VILLAGE OF ISLANDS FIRE RESCUE)	81850 OVERSEAS HWY	Islamorada	33036	10.13	4	4			Emergency Medical Service
KEY LARGO AMBULANCE	98600 OVERSEAS HWY	Key Largo	33037	9.89	3	4			Emergency Medical Service
KEY WEST FIRE RESCUE (AMR)	1980 N ROOSEVELT BLVD	Key West	33040	2.60	1	1	AE		Emergency Medical Service
MARATHON FIRE RESCUE ST 1	3299 OVERSEAS HWY	Marathon	33050	5.02	2	3	AE		Emergency Medical Service
MARATHON FIRE ST 14 (MARATHON FIRE RESCUE)	8900 OVERSEAS HWY	Marathon	33050	7.31	3	3	AE		Emergency Medical Service
MONROE COUNTY RADIOLOGICAL EOC (Tavernier Vol Fire Dept/EMS #22)	151 MARINE AVE	Tavernier	33070	9.84	4	4	AE		Emergency Medical Service
MONROE COUNTY SHERIFF CUDJOE KEY SUBSTATION (Medical 4 Station)	20950 OVERSEAS HWY	Summerland Key	33042	5.33	2	2	AE		Emergency Medical Service
DEPOO HOSPITAL	1200 KENNEDY DR	Key West	33040	5.88	2	1	AE		Emergency Medical Service
FISHERMEN'S HOSPITAL	3301 OVERSEAS HWY	Marathon	33050	5.95	3	3	AE		Emergency Medical Service
LOWER KEYS MEDICAL CENTER	1200 KENNEDY DR	Key West	33040	6.57	3	1	AE		Hospital
MARINERS HOSPITAL	91500 OVERSEAS HWY	Tavernier	33070	5.16	3	4	AE		Hospital - Acute Care
GUIDANCE/CARE CENTER	3000 41ST OCEAN	Marathon		3.94	2	3	AE		Hospital - Acute Care
Plantation Key Convalescent Center	48 Highpoint Road	Tavernier	33070	4.89	2	4	AE		Hospital - Acute Care
KEY WEST HEALTH AND REHABILITATION CENTE	5860 W JUNIOR COLLEGE RD	Key West		3.70	2	1	AE		Residential Treatment Facility
Plantation Key NURSING CENTER	48 HIGH POINT ROAD	Tavernier		4.71	2	4	AE		Residential Treatment Facility

¹ Feet above NAVD88, N.A. = not covered by the Digital Elevation Model

Table 3
Other Critical Facilities Vulnerability Assessment – Facilities with at Least One Risk Factor

Name	Address	City	Zip	DEM Elev ²	Surge	Evac Zone	Fire	Flood	Facility Type
KEY WEST INTERNATIONAL AIRPORT	3491 S ROOSEVELT BLVD	Key West	33040	2.75	1	1	AE		Airport
KEY WEST NAS / BOCA CHICA FIELD	OVERSEAS HWY & SARATOGA AVE	Key West	33040	3.39	2	2	VE		Airport
OCEAN REEF CLUB AIRPORT		Key Largo	33037	4.74	1	4	AE		Airport
SUGAR LOAF AIRPORT		Summerland Key	33042	1.75	1	2	AE		Airport
SUMMERLAND KEY COVE AIRPORT		Summerland Key	33042	1.92	1	2	AE		Airport
Tavernier Airport Site		Tavernier	33070	10.30	4	4			Airport
THE FLORIDA KEYS MARATHON AIRPORT	9400 OVERSEAS HWY	Marathon	33050	4.48	2	3	AE		Airport
KEY COLONY BEACH POLICE DEPT HEADQUARTERS (Key Colony Beach Auditorium)	600 W OCEAN DR	Marathon	33050	2.82	2	3	AE		Attraction
Big Cypress Preserve - Boundary Line Airboat Access Point (Restricted Use - See Comments)	Loop Road (County Road 94)	Ochopee	34141	5.07	2	6	AE		Boat Ramp
Big Cypress Preserve - Mitchell's Landing Airboat Access Point (Restricted Use - See Comments)	Loop Road (County Road 94)	Ochopee	34141	4.90	2	6	AE		Boat Ramp
Card Sound Bridge East - Unpaved Roadside Ramp (Small Boats Only)	Card Sound Road - East side bridge (Mile	Key Largo	33037	1.83	1	4	VE		Boat Ramp
Card Sound Road - Mosquito Creek Canoe / Kayak Access Site	Card Sound Road (Mile Mark 3.3)	Key Largo	33707	-0.29	1	4	AE		Boat Ramp
Card Sound Road - Steamboat Creek Canoe / Kayak Access Site	Card Sound Road (Mile Marker CS 1.6)	Key Largo	33037	1.13	1	4	AE		Boat Ramp
Card Sound Road - Tubby's Creek Canoe / Kayak Access Site	Card Sound Road (Mile Marker CS 2.5)	Key Largo	33707	0.32	1	4	AE		Boat Ramp
Caribbean Club Pay Ramp	104740 Overseas Highway	Key Largo	33037	-0.04	3	4	VE		Boat Ramp
City of Key West 11th Street Public Boat Ramp	11th Street	Key West	33040	0.52	1	1	AE		Boat Ramp
City of Marathon 33rd Street Boat Ramp	33rd Street	Marathon	33050	1.84	1	3	VE		Boat Ramp
Crawl Key (Mile Marker 54) Public Boat Ramp	Overseas Highway Mile Marker 54 Bayside	Marathon	33050	2.42	1	3	AE		Boat Ramp
Cudjoe Key / Blimp Road Public Boat Ramp (Shallow Water)	North end of Blimp Road	Cudjoe Key	33040	2.61	1	2	VE		Boat Ramp
Eden Pines Neighborhood Boat Ramp (No Parking!)	Bittersweet Avenue	Big Pine Key	33043	2.30	1	2	AE		Boat Ramp

² Feet above NAVD88, N.A. = not covered by the Digital Elevation Model

STATEWIDE REGIONAL EVACUATION STUDY – SOUTH FLORIDA

APPENDIX C – MONROE COUNTY

Name	Address	City	Zip	DEM Elev ²	Surge	Evac Zone	Fire	Flood	Facility Type
Geiger Key Undeveloped Access Site	7 Geiger Road	Key West	33040	-0.06	1	2	AE		Boat Ramp
Gulf View Park Public Boat Ramp (aka. Barcelona) Small Boats Only	North end of Barcelona Drive	Big Coppitt Key	33040	-1.71	1	2	VE		Boat Ramp
Harbour Point Marine (No Parking - In and Out Only)	4681 Overseas Highway	Marathon	33050	2.04	1	3	AE		Boat Ramp
Harry Harris County Park	Beach Road Oceanside	Tavernier	33070	3.09	1	4	VE		Boat Ramp
Indian Key Fill Public Boat Ramp (Primitive - For Smaller Boats)	Overseas Highway Mile Marker 79	Islamorada	33036	0.97	1	4	AE		Boat Ramp
Islamorada - East Ridge Road Public Boat Ramp (No Parking - Small Boats Only)	East Ridge Road	Islamorada	33070	-1.07	1	4	VE		Boat Ramp
Key West Yacht Club	2315 N ROOSEVELT BLVD	Key West	33040	3.03	1	1	AE		Boat Ramp
Koehn Avenue Public Boat Ramp (Shallow Water)	North end of Koehn Avenue	Big Pine Key	33043	1.91	1	2	VE		Boat Ramp
Little Duck Key Wayside Park Public Boat Ramp	Overseas Highway Mile Marker 40, west la	Little Duck Key (Big Pine Key)	33043	N.A.		2	VE		Boat Ramp
Little Torch Key Public Boat Ramp	State Road 4A	Little Torch Key	33042	0.83	1	2	AE		Boat Ramp
Looe Key Reef Resort and Dive Center	27340 Overseasea Highway	Ramrod Key	33042	1.04	1	2	AE		Boat Ramp
North Marathon Shores Public Boat Ramp (aka. Dodge Lake)	Aviation Boulevard and Harbor Drive	Marathon	33050	3.16	2	3	AE		Boat Ramp
Old Wooden Bridge Guest Cottages And Marina	1791 Bogie Drive	Big Pine Key	33043	0.51	1	2	VE		Boat Ramp
Plantation Tropical Preserve Paddle Craft Launch	~90612 Overseas Highway	Tavernier	33070	3.47	1	4	AE		Boat Ramp
PonTunes Key Largo Boat Rentals, Marina and Tiki Bar (Small Boats - Parking Off-Site)	107690 Overseas Highway	Key Largo	33037	0.79	3	4	AE		Boat Ramp
Royal Hawaiian Motel-Botel (No Parking if Not an Overnight Guest - Small Boats Only)	12020 Overseas Highway	Marathon	33050	3.26	2	3	AE		Boat Ramp
Sammy Creek Landing at Sugarloaf Creek (Canoe and Kayak Only)	Old State Road 4A	Sugarloaf Key	33042	0.45	1	2	AE		Boat Ramp
Sea Bird Marina	69501 Overseas Highway Bayside	Long Key	33001	1.99	1	4	AE		Boat Ramp
Shark Key Wayside Park Public Boat Ramp (Mile Marker 11)	Overseas Highway, Mile Marker 11, Oceans	Key West	33040	0.30	1	2	VE		Boat Ramp
Silver Palm Marine	59073 Overseas Highway	Marathon	33050	-0.66	1	3	VE		Boat Ramp
Simonton Street Beach Public Boat Ramp	North end of Simonton Street	Key West	33040	1.10	1	1	VE		Boat Ramp
Spanish Harbor Wayside Park (Mile Marker 34)	Overseas Highway Mile Marker 34, Bayside	West Summerland Key	33042	2.51	1	2	VE		Boat Ramp
Stock Island Wayside Park Public Boat Ramp (Mile Marker 5)	Overseas Highway, Mile Marker 5, Oceansi	Key West	33040	1.49	1	1	AE		Boat Ramp
Sugarloaf Marina	17015 Overseas Highway	Sugarloaf Key	33042	1.03	1	2	AE		Boat Ramp
Sunset Point Park Public Boat Ramp	20 Sunset Road	Key Largo	33037	0.54	1	4	VE		Boat Ramp

STATEWIDE REGIONAL EVACUATION STUDY – SOUTH FLORIDA

APPENDIX C – MONROE COUNTY

Name	Address	City	Zip	DEM Elev ²	Surge	Evac Zone	Fire	Flood	Facility Type
Tavernier - Jo-Jean Way Boat Ramp (Not Recommended, No On-site Parking, Small Boats Only)	northern terminus of Jo-Jean Way	Tavernier	33070	-0.25	1	4	VE		Boat Ramp
Upper Matecumbe Key - Blackwood Road Primitive Launch Site (Not Recommended)	north end of Blackwood Drive	Upper Matecumbe Key	33036	-0.58	1	4	VE		Boat Ramp
GREYHOUND-BIG PINE KEY	30725 OVERSEAS HWY	Big Pine Key		5.42	3	2	AE		Bus Terminal
GREYHOUND-ISLAMORADA	82201 OVERSEAS HWY	Islamorada		8.07	4	4	AE		Bus Terminal
GREYHOUND-KEY WEST INT'L	3535 S ROOSEVELT BLVD	Key West		3.13	2	1	VE		Bus Terminal
GREYHOUND-MARATHON	12222 OVERSEAS HWY	Marathon		3.97	2	3	AE		Bus Terminal
MONROE COUNTY SHERIFF HEADQUARTERS	5525 COLLEGE RD	Key West	33040	3.20	1	1	VE		Call Center
MONROE COUNTY SHERIFF MARATHON SUBSTATION (MONROE COUNTY SHERIFF MARATHON SUB STATION)	3103 OVERSEAS HWY	Marathon	33050	6.20	3	3	AE		Call Center
PLANTATION DETENTION CENTER	53 HIGH POINT RD	Tavernier	33070	6.55	2	4	AE		Call Center
U.S. COAST GUARD STATION	1800 OVERSEAS HWY	Marathon	33050	3.32	2	3	AE		Coast Guard
U.S. COAST GUARD STATION	183 PALERMO DR	Islamorada	33036	4.01	2	4	AE		Coast Guard
U.S. COAST GUARD STATION	TRUMBO RD & PEARY CT	Key West	33040	6.37	3	1	VE		Coast Guard
FLORIDA KEYS COMMUNITY COLLEGE	5901 COLLEGE RD	Key West	33040	8.92	4	1	AE		College
Key West Port/Transit Authority	620 Palm Ave	Key West	33040	2.71	1	1	AE		Commercial Ports
PORT OF KEY WEST	201 WILLIAM ST	Key West	33040	2.55	1	1	AE		Commercial Ports
BIG PINE KEY ROAD PRISON (MALE)	450 KEY DEER BLVD	Big Pine Key	33043	3.55	1	2	AE		Correctional Facility
MARATHON DETENTION FACILITY	3981 OCEAN TER	Marathon	33050	4.86	2	3	AE		Correctional Facility
PLANTATION DETENTION CENTER	53 HIGHPOINT RD	Tavernier	33070	6.55	2	4	AE		Correctional Facility
ALAVAREZ FAMILY DAY CARE HOME	2689 N ROOSEVELT BLVD APT 4	Key West	33040	4.37	2	1	AE		Day Care
ALFARO FAMILY DAY CARE HOME	5501 3RD AVE APT 164	Key West	33040	5.10	3	1	AE		Day Care
ALVAREZ-GONZALEZ FAMILY DAY CARE HOME	81 CENTRAL AVENUE	Key Largo	33037	7.39	2	4	AE		Day Care
AVILLIERA FAMILY DAY CARE HOME	6125 2ND STREET LOT #3	Key West	33040	3.20	2	1	AE		Day Care
BANANA CABANNA ACADEMY INC	22673 PIECES OF EIGHT RD	Cudjoe Key	33042	2.75	1	2	AE		Day Care
BARRIOS FAMILY DAY CARE HOME	3031 FLAGLER AVE	Key West	33040	2.02	1	1	AE		Day Care
BETANCOURT FAMILY DAY CARE HOME	5700 LAUREL AVE LOT 1	Key West	33040	1.86	1	1	AE		Day Care
BRITO FAMILY DAY CARE HOME	6717 SHRIMP RD APT 219	Key West	33040	3.13	2	1	AE		Day Care
BURTON MEMORIAL CHILD DEVELOPMENT CENTER	93001 OVERSEAS HIGHWAY	Tavernier	33070	7.59	2	4	AE		Day Care
DEMMING FAMILY DAY CARE HOME	421 110TH STREET OCEAN	Marathon	33050	2.90	2	3	AE		Day Care

STATEWIDE REGIONAL EVACUATION STUDY – SOUTH FLORIDA

APPENDIX C – MONROE COUNTY

Name	Address	City	Zip	DEM Elev ²	Surge	Evac Zone	Fire	Flood	Facility Type
DOLPHIN MONTESSORI CHILDREN'S HOUSE INC	104960 OVERSEAS HIGHWAY	Key Largo	33037	10.76	3	4			Day Care
ESPINOSA FAMILY DAY CARE HOME	1200 FIRST STREET M1	Key West	33040	2.31	1	1	AE		Day Care
ESPINOZA FAMILY DAY CARE HOME	6721 SHRIMP RD APT 122	Key West	33040	3.45	2	1	AE		Day Care
FALCON FAMILY DAY CARE HOME	1200 FIRST STREET APT 4-C	Key West	33040	2.45	1	1	AE		Day Care
FIRST BAPTIST CHURCH JACK HILL CHILD CARE CENTER	99001 OVERSEAS HIGHWAY	Key Largo	33037	10.08	3	4			Day Care
FLORES FAMILY DAY CARE HOME	6705 SHRIMP RD APT 101	Key West	33040	3.42	2	1	AE		Day Care
GRACE JONES COMMUNITY CENTER & DAYCARE INC	230 41ST STREET GULF	Marathon	33050	6.26	2	3	AE		Day Care
HERRADA FAMILY DAY CARE HOME	5507 5TH AVENUE LOT B	Key West	33040	2.61	1	1	AE		Day Care
INEZ MARTIN CHILD CARE CENTER	1304 TRUMAN AVENUE	Key West	33040	6.05	3	1			Day Care
JEREZ FAMILY DAY CARE HOME	6713 SHRIMP RD APT 214	Key West	33040	3.07	2	1	AE		Day Care
KEY LARGO K-8 SCHOOL (KEY LARGO SCHOOL FACULTY CHILD DEVELOPMENT CENTER)	104801 OVERSEAS HWY	Key Largo	33037	9.10	3	4			Day Care
KEY WEST GRACE LUTHERAN CHURCH (GRACE LUTHERAN)	2713 FLAGLER AVE	Key West	33040	2.85	1	1	AE		Day Care
KEY WEST PRESCHOOL CO-OPERTIVE, INC.	2610 FLAGLER AVENUE	Key West	33040	2.46	1	1	AE		Day Care
KIND TO KIDS LEARNING CENTER	30070 POND LANE	Big Pine Key	33043	2.95	1	2	AE		Day Care
LIGHTHOUSE CHRISTIAN ACADEMY INC	5580 MACDONALD AVE	Key West	33040	2.75	1	1	AE		Day Care
MACHIN FAMILY DAY CARE HOME	927 CATHERINE ST	Key West	33040	6.77	3	1			Day Care
MARATHON LUTHERAN SCHOOL	325 122ND ST	Marathon	33050	5.62	2	3	AE		Day Care
MIRANDA FAMILY DAY CARE HOME	1651 ELLSBERG CT APT 4	Key West	33040	4.13	2	1	AE		Day Care
MIRANDA FAMILY DAY CARE HOME	1651 ELLSBERG CT APT 5	Key West	33040	4.24	2	1	AE		Day Care
MONROE COUNTY SUPERINTENDENT'S OFFICE (THE LEARNING CENTER OF KEY WEST INC)	241 TRUMBO RD	Key West	33040	4.32	2	1	VE		Day Care
MONTESSORI ACADEMY OF THE UPPER KEYS	5 TRANSYLVANIA AVENUE	Key Largo	33037	11.12	4	4			Day Care
MORALES FAMILY DAY CARE HOME	2929 FOGARTY AVENUE	Key West	33040	2.81	1	1	AE		Day Care
MORALES FAMILY DAY CARE HOME	5501 3RD AVE APT 143	Key West	33040	4.67	3	1	AE		Day Care
MORENO FAMILY DAY CARE HOME	1659 REORDAN CT APT 4	Key West	33040	3.88	2	1	AE		Day Care
PEREZ FAMILY DAY CARE HOME	28554 LEGRAND RD	Little Torch Key	33042	3.39	1	2	AE		Day Care
PEREZ FAMILY DAY CARE HOME	2107 PATTERSON AVE #1	Key West	33040	1.99	1	1	AE		Day Care
RAMIREZ FAMILY DAY CARE HOME	1205 20TH STREET	Key West	33040	2.56	1	1	AE		Day Care
ROCAMORA FAMILY DAY CARE HOME	5700 LAUREL AVE LOT 3	Key West	33040	1.80	1	1	AE		Day Care

STATEWIDE REGIONAL EVACUATION STUDY – SOUTH FLORIDA

APPENDIX C – MONROE COUNTY

Name	Address	City	Zip	DEM Elev ²	Surge	Evac Zone	Fire	Flood	Facility Type
RODRIGUEZ FAMILY DAY CARE HOME	1632 SCHOLTZ CT APT 1	Key West	33040	4.44	2	1	AE		Day Care
RODRIGUEZ FAMILY DAY CARE HOME	1639 MORGAN CT #1	Key West	33040	4.87	2	1	AE		Day Care
SEGURA FAMILY DAY CARE HOME	3018 FLAGLER AVE	Key West	33040	2.17	1	1	AE		Day Care
ST. JUSTIN THE MARTYR CATHOLIC CHURCH (ST. JUSTIN ACADEMY)	105500 OVERSEAS HWY	Key Largo	33037	11.17	3	4			Day Care
SUNBEAM CHRISTIAN SCHOOL	1311 FIFTH STREET	Key West	33040	2.49	1	1	AE		Day Care
VALDEZ FAMILY DAY CARE HOME	1310 FLAGLER AVE.	Key West	33040	3.21	2	1	AE		Day Care
WITTENMYER FAMILY DAY CARE HOME	1405 18TH ST	Key West	33040	3.54	2	1	AE		Day Care
ZOLL FAMILY DAY CARE HOME	2019 FLAGLER AVE.	Key West	33040	3.55	2	1	AE		Day Care
Carysfort Debris Site	State Rd 905	Key Largo	33037	-2.94	1	4	AE		Disaster Debris Staging Site
EVANS ENVIRONMENTAL (Dickerson Debris Site)	111 US HWY 1	Key West	33040	5.08	2	2	AE		Disaster Debris Staging Site
INDUSTRIAL COMMUNICATIONS & ELECTRONICS INC (Blimp Rd Debris Site)	BLIMP RD	Summerland Key	33042	-3.35	1	2	AE		Disaster Debris Staging Site
NEW ROCKLAND RECYCLING CENTER (Toppino Debris Site)	US HIGHWAY-1 @ MM9	Key West	33040	1.98	1	2	AE		Disaster Debris Staging Site
Ocean Reef Debris Site	Gatehouse Rd	Ocean Reef	33037	5.69	2	4	AE		Disaster Debris Staging Site
PRICE CUTTERS ROCKLAND (Rockland Investment)	111 US Highway 1	Key West	33040	5.23	2	2	AE		Disaster Debris Staging Site
Silver Shores Debris Site	751 Tropical Drive	Key Largo	33037	8.17	3	4			Disaster Debris Staging Site
BIG PINE MOOSE LODGE #1585	21 WILDER RD	Big Pine Key	33043	3.01	1	2	AE		Disaster Recovery Center
HABITAT FOR HUMANITY	30233 OVERSEAS HWY	Big Pine Key	33043	3.46	1	2	AE		Disaster Recovery Center
Islamorada County Library (MONROE COUNTY PUBLIC LIBRARY)	81850 OVERSEAS HWY	Islamorada	33036	9.05	4	4			Disaster Recovery Center
KEY WEST FIRE ST 1	1600 N ROOSEVELT BLVD	Key West	33040	5.46	2	1	AE		Disaster Recovery Center
KEY WEST FIRE ST 1	1600 N ROOSEVELT BLVD	Key West	33040	5.46	2	1	AE		Disaster Recovery Center
KEY WEST FIRE ST 3	1525 KENNEDY DR	Key West	33040	2.98	1	1	AE		Disaster Recovery Center
MARATHON AIRPORT	9400 OVERSEAS HWY	Marathon	33050	5.58	2	3	AE		Disaster Recovery Center
SAN PABLO CATHOLIC CHURCH	550 122ND ST OCEAN	Marathon	33050	5.42	2	3	AE		Disaster Recovery Center
ST. JUSTIN THE MARTYR CATHOLIC CHURCH	105500 OVERSEAS HWY	Key Largo	33037	11.17	3	4			Disaster Recovery Center
FKEC GENERATING PLANT	3421 OVERSEAS HWY	Marathon	33050	4.87	2	3	AE		Electric Power Plant
Keys Energy Services Generating Plant (STOCK ISLAND)	6900 FRONT ST	Key West	33040	5.95	3	1	AE		Electric Power Plant
FKEC KEY LARGO SUBSTATION	98401 OVERSEAS HWY	Key Largo	33037	8.46	2	4			Electric Substation
FLORIDA KEYS ELECTRIC	91600 OVERSEAS HWY	Tavernier	33070	10.22	4	4	AE		Electric Substation
ISLAMORADA		Islamorada	33036	9.20	4	4	AE		Electric Substation

STATEWIDE REGIONAL EVACUATION STUDY – SOUTH FLORIDA

APPENDIX C – MONROE COUNTY

Name	Address	City	Zip	DEM Elev ²	Surge	Evac Zone	Fire	Flood	Facility Type
KEYS ENERGY SERVICES FACILITY BIG COPPITT	MM 10 OVERSEAS HWY	Key West	33040	7.72	3	2	AE		Electric Substation
Keys Energy Services Facility Cudjoe Key (CUDJOE)	Blimp Road	Cudjoe Key	33042	3.76	1	2	AE		Electric Substation
Keys Energy Services Main Office	1001 James Street	Key West	33040	2.36	1	1	AE		Electric Substation
KEYS ENERGY SERVICES SUBSTATION	MM 6 OVERSEAS HWY	Key West	33040	4.09	2	1	AE		Electric Substation
KEYS ENERGY SERVICES SUBSTATION	1007 KENNEDY DR	Key West	33040	3.57	2	1	AE		Electric Substation
CITY OF KEY WEST EMERGENCY OPERATIONS CENTER	1604 N ROOSEVELT BLVD	Key West	33040	5.64	3	1	AE		Emergency Operations Center
KEY LARGO EOC	1 EAST DR	Key Largo	33037	10.54	3	4			Emergency Operations Center
MONROE COUNTY EMERGENCY MANAGEMENT-EOC-ALTERNATE	490 63RD ST	Marathon	33050	4.17	2	3	AE		Emergency Operations Center
MONROE COUNTY EOC	2798 OVERSEAS HWY	Marathon	33050	7.21	3	3	AE		Emergency Operations Center
MONROE COUNTY RADIOLOGICAL EOC	151 MARINE AVE	Tavernier	33070	9.84	4	4	AE		Emergency Operations Center
BIG COPPITT FIRST BAPTIST	200 AVENUE F	Key West	33040	3.07	1	2	AE		Faith-Based Facility
BIG PINE BAPTIST CHURCH	300 KEY DEER BLVD	Big Pine Key	33043	2.98	1	2	AE		Faith-Based Facility
BIG PINE METHODIST CHURCH	280 KEY DEER BLVD	Big Pine Key	33043	3.44	1	2	AE		Faith-Based Facility
BURTON MEMORIAL UNITED CHURCH	93001 OVERSEAS HIGHWAY	Tavernier	33070	7.13	2	4	AE		Faith-Based Facility
CHABAD OF KEY WEST INC	321 GRINNELL ST	Key West	33040	1.28	1	1	AE		Faith-Based Facility
CHURCH OF GOD	1419 WHITE ST	Key West	33040	3.93	2	1	AE		Faith-Based Facility
CHURCH OF GOD OF PROPHECY (CHURCH OF GOD)	308 VIRGINIA ST	Key West	33050	5.45	2	1			Faith-Based Facility
CORAL ISLES CHURCH	90001 OLD HWY	Plantation Key	33070	7.85	3	4	AE		Faith-Based Facility
CORP OF THE PRESI BISH JESUS C	3424 NORTHSIDE DR	Key West	33040	3.94	2	1	AE		Faith-Based Facility
DISTRICT ADVISORY BD OF	VACANT LAND	Key Largo	33037	8.67	3	4			Faith-Based Facility
ENGLISH CONGREGATION OF K L J	102 GUMBO LIMBO	Key Largo	33037	11.05	4	4			Faith-Based Facility
ETHRIDGE W DAVID	908-5 TRINITY DR	Key West	33040	5.34	2	1	AE		Faith-Based Facility
FIFTH STREET BAPTIST CHURCH	2318 FOGARTY AVE	Key West	33040	2.42	1	1	AE		Faith-Based Facility
FIRST BAPTIST CHURCH OF KEY LARGO (FIRST BAPTIST CHURCH)	99001 OVERSEAS HIGHWAY	Key Largo	33037	10.48	3	4			Faith-Based Facility
FIRST BAPTIST CHURCH OF MARATHON	200 62ND ST	Marathon	33050	3.29	2	3	AE		Faith-Based Facility
FLORIDA CONFERENCE ASSN OF 7TH	86450 OVERSEAS HWY	Islamorada	33036	3.87	2	4	AE		Faith-Based Facility
IMMANUEL EVANGELICAL LUTHERAN CHURCH (IMMANUEL CHURCH)	120 OCEAN DRIVE	Tavernier	33070	6.20	1	4	AE		Faith-Based Facility
ISLAND COMMUNITY CHURCH	83250 OVERSEAS HWY	Islamorada	33036	5.68	2	4	AE		Faith-Based Facility

STATEWIDE REGIONAL EVACUATION STUDY – SOUTH FLORIDA

APPENDIX C – MONROE COUNTY

Name	Address	City	Zip	DEM Elev ²	Surge	Evac Zone	Fire	Flood	Facility Type
KEY LARGO BAPTIST TEMPLE INC	VACANT LAND	Key Largo	33037	8.31	3	4	AE		Faith-Based Facility
KEY WEST BAPTIST TEMPLE	5727 2ND AVE	Key West	33040	3.23	1	1	AE		Faith-Based Facility
KEY WEST GRACE LUTHERAN CHURCH	2713 FLAGLER AVE	Key West	33040	2.85	1	1	AE		Faith-Based Facility
LAYTON COMMUNITY BAPTIST CHURCH	128 S LAYTON DR	Marathon	33050	3.15	1	4	AE		Faith-Based Facility
LAYTON COMMUNITY BAPTIST CHURCH	124 SNAPPER CREEK DR	Marathon	33050	2.04	1	4	AE		Faith-Based Facility
MARATHON LUTHERAN SCHOOL (MARATHON LUTHERAN CHURCH - MARTIN LUTHER CHAPEL)	325 122ND ST	Marathon	33050	5.62	2	3	AE		Faith-Based Facility
MARATHON NEW LIFE ASSEMBLY OF GOD CHURCH	4711 OVERSEAS HWY	Marathon	33050	3.88	2	3	AE		Faith-Based Facility
NEWMAN CHURCH	410 TRUMAN AVE	Key West	33040	8.50	4	1			Faith-Based Facility
SAINT MARY STAR OF THE SEA CHURCH	1010 WINDSOR LN	Key West	33040	6.16	3	1			Faith-Based Facility
SAINT PAULS EPISCOPAL CHURCH	401 DUVAL STREET	Key West	33040	9.41	5	1			Faith-Based Facility
SAINT PETERS CHURCH	31300 OVERSEAS HWY	Big Pine Key	33043	3.44	1	2	AE	5	Faith-Based Facility
SAINT PETERS EPISCOPAL CHURCH	800 CENTER STREET	Key West	33040	11.41		1			Faith-Based Facility
SALVATION ARMY	3515 17TH TER	Key West	33040	3.67	2	1	AE		Faith-Based Facility
SAN PABLO CATHOLIC CHURCH	550 122ND ST OCEAN	Marathon	33050	5.42	2	3	AE		Faith-Based Facility
SAN PABLO CATHOLIC CHURCH	550 122ND ST OCEAN	Marathon	33050	5.42	2	3	AE		Faith-Based Facility
SAN PABLO CATHOLIC CHURCH	550 122ND ST OCEAN	Marathon	33050	5.42	2	3	AE		Faith-Based Facility
SAN PEDRO CHURCH	89500 Overseas Highway	Tavernier	33070	3.52	1	4	AE		Faith-Based Facility
SEVENTH DAY ADVENTIST CHURCH	1006 THOMAS ST	Key West	33040	4.71	2	1	AE		Faith-Based Facility
St. James Episcopal Plantation Key (SAINT JAMES MISSIONARY BAPTIST CHURCH)	87500 OVERSEAS HWY	Plantation Key	33040	6.92	3	4			Faith-Based Facility
ST. JUSTIN THE MARTYR CATHOLIC CHURCH	105500 OVERSEAS HWY	Key Largo	33037	11.17	3	4			Faith-Based Facility
TRINITY PRESBYTERIAN CHURCH	717 SIMONTON ST	Key West		10.61		1			Faith-Based Facility
TRUSTEES OF ST JAMES MISSIONARY CHURCH	312 - 314 OLIVIA ST	Key West	33040	8.98	5	1			Faith-Based Facility
TRUSTEES OF THE FIFTH	3504 EAGLE AVE	Key West	33040	3.54	2	1	AE		Faith-Based Facility
UNITY OF THE KEYS INC	1011 VIRGINIA ST	Key West	33040	7.24	3	1			Faith-Based Facility
UNITY OF THE KEYS INC	909 FLAGLER AVE	Key West	33040	4.54	2	1	AE		Faith-Based Facility
VINEYARD CHRISTIAN FELLOWSHIP	100 COUNTY RD	Big Pine Key	33043	7.36	3	2	AE		Faith-Based Facility
BIG COPPIT FIRE ST 9	28 EMERALD DR	Key West	33040	7.40	3	2	AE		Fire Station
CONCH KEY VFD ST 17	10 S CONCH AVE	Marathon	33050	2.98	1	3	AE		Fire Station
CUDJOE KEY FIRE ST 11	20950 OVERSEAS HWY	Summerland Key	33042	5.87	2	2	AE		Fire Station
ISLAMORADA FIRE ST 19	118 GULFVIEW DR	Islamorada	33036	3.65	2	4	AE		Fire Station

STATEWIDE REGIONAL EVACUATION STUDY – SOUTH FLORIDA

APPENDIX C – MONROE COUNTY

Name	Address	City	Zip	DEM Elev ²	Surge	Evac Zone	Fire	Flood	Facility Type
ISLAMORADA FIRE ST 20	81850 OVERSEAS HWY	Islamorada	33036	10.13	4	4			Fire Station
ISLAMORADA FIRE ST 21	88005 OVERSEAS HWY	Islamorada	33036	9.33	4	4			Fire Station
Key Largo Fire Rescue #24 (KEY LARGO FIRE ST 1)	1 EAST DR	Key Largo	33037	10.48	3	4			Fire Station
KEY WEST FIRE ST 1	1600 N ROOSEVELT BLVD	Key West	33040	5.46	2	1	AE		Fire Station
KEY WEST FIRE ST 3	1525 KENNEDY DR	Key West	33040	2.98	1	1	AE		Fire Station
KEY WEST INTL AIRPORT FIRE ST 7	3941 S ROOSEVELT BLVD	Key West	33040	3.55	2	1	VE		Fire Station
KEY WEST POLICE STATION (KEY WEST FIRE ST 2)	525 ANGELA ST	Key West	33040	7.71	5	1			Fire Station
LAYTON VFD ST 18	68240 OVERSEAS HWY	Layton	33001	3.63	2	4	AE		Fire Station
LOWER SUGARLOAF VFD 10	17175 OVERSEAS HWY	Summerland Key	33042	5.03	2	2	AE		Fire Station
MARATHON FIRE ACADEMY FACILITY	56633 OVERSEAS HWY	Marathon	33050	6.47	2	3	AE		Fire Station
MARATHON FIRE ST 14	8900 OVERSEAS HWY	Marathon	33050	7.31	3	3	AE		Fire Station
MONROE COUNTY EMERGENCY MANAGEMENT-EOC-ALTERNATE (MONROE COUNTY FIRE DEPARTMENT)	490 63RD ST	Marathon	33050	4.17	2	3	AE		Fire Station
MONROE COUNTY RADIOLOGICAL EOC (TAVERNIER VFD ST 22)	151 MARINE AVE	Tavernier	33070	9.84	4	4	AE		Fire Station
NAVAL AIR STATION BOCA CHICA FIRE STATION	MIDWAY AVE & SARATOGA AVE	Key West	33040	6.41	2	2	AE		Fire Station
NORTH KEY LARGO FIRE ST 25	220 REEF DR	Key Largo	33037	10.21	3	4			Fire Station
Ocean Reef Club Fire Station #26	100 Anchor Drive	Ocean Reef	33037	4.89	2	4	AE		Fire Station
STOCK ISLAND FIRE ST 8	6180 2ND ST	Stock Island	33040	4.95	3	1	AE		Fire Station
811963 CKEY	MILE MARKER 48	Marathon		2.93	2	3	AE		Hazardous Materials Facility
AIRGAS USA, LLC. - KEY WEST - SO18	6412 MALONEY AVE.	Key West		1.86	1	1	AE		Hazardous Materials Facility
AMERIGAS PROPANE - 2518	3901 OVERSEAS HIGHWAY	Marathon		4.50	2	3	AE		Hazardous Materials Facility
AMERIGAS PROPANE - AMERIGAS EAGLE PROPANE-2	FIRST AVENUE AT THIRD STREET	Stock Island		2.99	1	1	AE		Hazardous Materials Facility
AMERIGAS PROPANE - BIG PINE KEY	100 INDUSTRIAL ROAD	Big Pine Key		2.94	1	2	AE		Hazardous Materials Facility
AMERIGAS PROPANE - ISLAMORADA	86400 OVERSEAS HIGHWAY	Islamorada		6.90	4	4	AE		Hazardous Materials Facility
AVIS RENT A CAR SYSTEM, LLC	3495 SOUTH ROOSEVELT BOULEVARD	Key West		2.03	1	1	VE		Hazardous Materials Facility
BAYSIDE MARINA	81576 OVERSEAS HIGHWAY	Islamorada		7.67	3	4	AE		Hazardous Materials Facility
Bell South Key Largo (BellSouth - M2638)	10280 OVERSEAS HIGHWAY	Key Largo	33037	10.46	4	4			Hazardous Materials Facility
Bell South Key Largo (BellSouth - M2645)	94930 OVERSEAS HWY	Key Largo		5.46	2	4	AE		Hazardous Materials Facility
Bell South Sugarloaf (BellSouth - M2687)	19921 OVERSEAS HIGHWAY	Sugarloaf		4.57	2	2	AE		Hazardous Materials Facility
BELLSOUTH - M2616	51 COCO PLUM DRIVE	Marathon		4.92	2	3	AE		Hazardous Materials Facility

STATEWIDE REGIONAL EVACUATION STUDY – SOUTH FLORIDA

APPENDIX C – MONROE COUNTY

Name	Address	City	Zip	DEM Elev ²	Surge	Evac Zone	Fire	Flood	Facility Type
BELLSOUTH - M2620	30769 AVENUE A	Big Pine Key		4.95	2	2	AE		Hazardous Materials Facility
BELLSOUTH - M2647	106500 OVERSEAS HWY	Key Largo		0.77	1	4	AE		Hazardous Materials Facility
BELLSOUTH - M2680	82689 OVERSEAS HWY	Islamorada		8.33	4	4			Hazardous Materials Facility
BELLSOUTH - ME040	530 SOUTHARD ST	Key West		8.41	5	1			Hazardous Materials Facility
BURDINES WATERFRONT	1200 OCEAN VIEW AVENUE	Marathon		2.41	1	3	AE		Hazardous Materials Facility
CALOOSA COVE MARINA	73501 OVERSEAS HIGHWAY	Islamorada		2.62	1	4	AE		Hazardous Materials Facility
CAPTAIN HOOKS MARINA AND DIVE CENTER	11833 OVERSEAS HIGHWAY	Marathon		3.81	2	3	AE		Hazardous Materials Facility
CARIBEE BOAT SALES AND MARINA	81500 OVERSEAS HIGHWAY	Islamorada		8.17	4	4			Hazardous Materials Facility
CASA MARINA, A WALDORF ASTORIA RESORT	1500 REYNOLDS STREET	Key West		5.35	3	1	AE		Hazardous Materials Facility
CEMEX - MARATHON READY MIX	1500 107 STREET	Marathon		N.A.		3			Hazardous Materials Facility
CEMEX - TAVERNIER READY MIX	92501 OVERSEAS HIGHWAY	Tavernier		4.23	2	4	AE		Hazardous Materials Facility
CHARLEY TOPPINO AND SONS	US HIGHWAY 1 - MILE MARKER 8 1/2 ROCKLA*	Key West		5.20	2	2	AE		Hazardous Materials Facility
CHARLEY TOPPINO AND SONS - MONROE CONCRETE PRODUCTS	US HIGHWAY 1 - MILE MARKER 9	Key West		7.09	3	2	AE		Hazardous Materials Facility
CITY OF KEY COLONY BEACH - WWTP	600 8TH STREET	Key Colony Beach		3.14	2	3	AE		Hazardous Materials Facility
COCA-COLA REFRESHMENTS USA, INC.--BIG PINE KEY	30801 AVENUE A	Big Pine Key		5.92	3	2	AE		Hazardous Materials Facility
CONCH HARBOR FUEL, LLC	951 CAROLINE ST.	Key West		2.86	2	1	AE		Hazardous Materials Facility
Cudjoe Key Aerostat Site	1800 Blimp Road	Cudjoe Key		3.45	1	2	AE		Hazardous Materials Facility
DEPARTMENT OF MANAGEMENT SERVICES - MONROE RSC	2796 OVERSEAS HIGHWAY	Marathon		5.39	2	3	AE		Hazardous Materials Facility
DUMONT COMPANY - BIG PINE KEY	100 INDUSTRIAL ROAD	Big Pine Key		4.37	2	2	AE		Hazardous Materials Facility
FAA NOX ARSR (NOX ARSR)	FAA BUILDING A-4173 NAS BOCA CHICA	Key West		2.30	2	2	AE		Hazardous Materials Facility
FISHERMEN'S HOSPITAL (FISHERMENS COMMUNITY HOSPITAL)	3301 OVERSEAS HWY	Marathon	33050	5.95	3	3	AE		Hazardous Materials Facility
FLORIDA KEYS AQUEDUCT - BIG COPPITT WWTP	42 CONCH CIRCLE	Rockland Key		2.33	1	2	AE		Hazardous Materials Facility
FLORIDA KEYS AQUEDUCT - DUCK KEY WWTP	1150 GREENBRIAR ROAD	Duck Key		4.03	2	3	AE		Hazardous Materials Facility
FLORIDA KEYS AQUEDUCT - KERMIT H LEWIN REVERSE OSMOSIS	END OF FRONT STREET STOCK ISLAND	Key West		6.01	3	1	VE		Hazardous Materials Facility
FLORIDA KEYS AQUEDUCT - KEY HAVEN WWTP	KEY HAVEN BOULEVARD	Key Haven		5.00	1	1	AE		Hazardous Materials Facility
FLORIDA KEYS AQUEDUCT - KEY LARGO MAINTENANCE	305 MAGNOLIA - MILE MARKER 100.3	Key Largo		9.97	3	4			Hazardous Materials Facility

STATEWIDE REGIONAL EVACUATION STUDY – SOUTH FLORIDA

APPENDIX C – MONROE COUNTY

Name	Address	City	Zip	DEM Elev ²	Surge	Evac Zone	Fire	Flood	Facility Type
FLORIDA KEYS AQUEDUCT - KEY LARGO TRANSMISSION PUMP	821 LARGO ROAD	Key Largo		5.59	3	4	AE		Hazardous Materials Facility
FLORIDA KEYS AQUEDUCT - KEY WEST PUMP STATION	301 SOUTHARD STREET	Key West		10.36		1			Hazardous Materials Facility
FLORIDA KEYS AQUEDUCT - LONG KEY PUMP STATION	US HIGHWAY 1 - MILE MARKER 70	Long Key		9.86		4	AE		Hazardous Materials Facility
FLORIDA KEYS AQUEDUCT - MARATHON PUMP STATION	3375 OVERSEAS HIGHWAY	Marathon		4.82	2	1	AE		Hazardous Materials Facility
FLORIDA KEYS AQUEDUCT - MARATHON REV OSMOSIS FAC	615 33 STREET GULF	Marathon		4.84	2	3	AE		Hazardous Materials Facility
FLORIDA KEYS AQUEDUCT - RAMROD PUMPING STATION	US HIGHWAY 1 - MILE MARKER 27	Ramrod Key		4.16	2	2	AE		Hazardous Materials Facility
FLORIDA KEYS AQUEDUCT - ROCK HARBOR PUMP STATION	US HIGHWAY 1 - MILE MARKER 99 ROCK HARB*	Key Largo		10.74	4	4			Hazardous Materials Facility
FLORIDA KEYS AQUEDUCT - ROCKLAND YARD	ROCKLAND KEY SERVICE ROAD - US HIGHWAY *	Rockland Key		3.24	2	2	AE		Hazardous Materials Facility
FLORIDA KEYS AQUEDUCT - STOCK ISLAND GARAGE	5226 COLLEGE ROAD	Key West		7.06	3	1	AE		Hazardous Materials Facility
FLORIDA KEYS AQUEDUCT - STOCK ISLAND PUMPING STATION	5226 COLLEGE ROAD	Key West		3.84	2	1	AE		Hazardous Materials Facility
FLORIDA KEYS ELECTRIC COOPERATIVE - MARATHON	3421 OVERSEAS HWY	Marathon	33050	4.68	2	3	AE		Hazardous Materials Facility
FLORIDA KEYS ELECTRIC COOPERATIVE - TAVERNIER	91630 OVERSEAS HIGHWAY	Tavernier		8.35	2	4	AE		Hazardous Materials Facility
HAWKS CAY RESORT AND MARINA	61000 HAWKS CAY BOULEVARD	Duck Key		2.56	1	3	VE		Hazardous Materials Facility
JOHN R MCKENZIE JOBBER - J AND S SERVICE	41 COCO PLUM DRIVE	Marathon		5.47	2	3	AE		Hazardous Materials Facility
JOHN R MCKENZIE JOBBER - MCKENZIE PETROLEUM	255 TAVERNIER STREET	Tavernier		8.93	4	4	AE		Hazardous Materials Facility
KEY LARGO	105700 OVERSEAS HWY	Key Largo		11.60	3	4			Hazardous Materials Facility
KEY LARGO ANGLERS CLUB	50 CLUB HOUSE RD	Key Largo		6.41	3	4	AE		Hazardous Materials Facility
KEY LARGO FISHERIES	1313 OCEAN BAY DRIVE	Key Largo		2.58	1	4	AE		Hazardous Materials Facility
KEY LARGO HARBOR MARINA	400 OCEAN DR	Key Largo	33037	5.44	2	4	AE		Hazardous Materials Facility
KEY LARGO RANGERS STATION	98710 OVERSEAS HIGHWAY	Key Largo		4.92	2	4	AE		Hazardous Materials Facility
KEY WEST INT'L AIRPORT-DTAG DOLLAR-RAC-40040	3495 S. ROOSEVELT BOULEVARD	Key West		3.26	1	1	VE		Hazardous Materials Facility
KEY WEST PIPELINE	TRUMBO POINT NAVAL ANNEX - BLDG D19	Key West		4.53	2	1	AE		Hazardous Materials Facility
MARINA CLUB AT BLACKWATER SOUND - KEY LARGO	103950 OVERSEAS HIGHWAY	Key Largo		5.32	3	4	AE		Hazardous Materials Facility

STATEWIDE REGIONAL EVACUATION STUDY – SOUTH FLORIDA

APPENDIX C – MONROE COUNTY

Name	Address	City	Zip	DEM Elev ²	Surge	Evac Zone	Fire	Flood	Facility Type
MHC Fiesta Key	70001 Overseas Highway, Mile Marker 70	Long Key		N.A.		4	AE		Hazardous Materials Facility
NAVAL AIR STATION KEY WEST- BOCA CHICA FIELD	BUILDING A-626 RANDOLPH AVE	Key West		2.08	2	2	AE		Hazardous Materials Facility
NAVAL AIR STATION KEY WEST- NAVAL BRANCH HEALTH CLINIC	1300 DOUGLAS CIRCLE	Key West		6.19	3	1	AE		Hazardous Materials Facility
NAVAL AIR STATION KEY WEST- SIGSBEE PARK ANNEX	SIGSBEE ROAD	Key West		6.20	3	1	AE		Hazardous Materials Facility
NAVAL AIR STATION KEY WEST- TRUMAN ANNEX	DEKALB AVE	Key West		4.02	2	1	AE		Hazardous Materials Facility
NAVAL AIR STATION KEY WEST- TRUMBO POINT ANNEX/FLEMING KEY	MUSTIN STREET	Key West		3.71	2	1	AE		Hazardous Materials Facility
NEW CINGULAR WIRELESS PCS, LLC - AKEY - USID71749	305 MAGNOLIA STREET	Key Largo		5.14	2	4			Hazardous Materials Facility
NEW CINGULAR WIRELESS PCS, LLC - BCKEY - USID83240	MILE MARKER 68 US HIGHWAY 1	Long Key		0.76	1	4	AE		Hazardous Materials Facility
New Cingular Wireless PCS, LLC - BKEY - USID71750	80600 OVERSEAS HIGHWAY	Islamorada		4.17	2	4	VE		Hazardous Materials Facility
NEW CINGULAR WIRELESS PCS, LLC - EKEY - USID71753	MILE MARKER 0 US HIGHWAY 1 NAVAL COAST *	Key West		5.42	2	1	VE		Hazardous Materials Facility
NEW CINGULAR WIRELESS PCS, LLC - PTVR - USID71755	88770 OVERSEAS HIGHWAY	Tavernier		5.34	2	4	AE		Hazardous Materials Facility
NEW CINGULAR WIRELESS PCS, LLC - UEKEY - USID71754	527 SOUTHARD STREET	Key West		8.50	4	1			Hazardous Materials Facility
NWS WEATHER FORECAST OFFICE KEY WEST	1315 WHITE STREET	Key West		6.01	3	1			Hazardous Materials Facility
OCEAN REEF CLUB	35 OCEAN REEF DRIVE, SUITE 200	Key Largo		3.92	2	4	VE		Hazardous Materials Facility
Plantation Key COLONY WWTF	286 GARDENIA STREET	Tavernier		4.11	2	4	AE		Hazardous Materials Facility
RICHARD A HEYMAN ENVIORNMENTAL PROTECTION FACILITY (Richard A Heyman Enviornmental Protection Facility)	TRUMBO POINT ANNEX - FLEMING KEY	Key West	33040	7.92	3	1	AE		Hazardous Materials Facility
RICHARD A HEYMAN WWTP - KEY WEST (RICHARD A HEYMAN WWTP KEY WEST)	TRUMBO POINT ANNEX - FLEMING KEY	Key West	33040	4.98	2	1	AE		Hazardous Materials Facility
RON LEVY AQUATIC CENTER	87000 OVERSEAS HWY	Islamorada		5.41	2	4	AE		Hazardous Materials Facility
SEACAMP ASSOCIATION, INC.	1300 BIG PINE AVENUE	Big Pine Key		1.75	1	2	AE		Hazardous Materials Facility
Sheraton Resort Key Largo (BUTTONWOOD BAY CONDOMINIUM ASSOCIATION INC)	96000 OVERSEAS HIGHWAY	Key Largo		8.37	3	4	AE		Hazardous Materials Facility
STOCK ISLAND POWER PLANT	6900 FRONT STREET EXTENDED	Key West		1.80	1	1	AE		Hazardous Materials Facility
SUBURBAN PROPANE - KEY WEST	726 CATHERINE STREET	Key West		8.03	4	1			Hazardous Materials Facility
SUBURBAN PROPANE - KEY WEST	726 CATHERINE STREET	Key West		8.03	4	1			Hazardous Materials Facility

STATEWIDE REGIONAL EVACUATION STUDY – SOUTH FLORIDA

APPENDIX C – MONROE COUNTY

Name	Address	City	Zip	DEM Elev ²	Surge	Evac Zone	Fire	Flood	Facility Type
SUGARLOAF KEY KOA	251 COUNTY ROAD 939 - MILE MARKER 20	Sugarloaf Key		2.79	1	2	AE		Hazardous Materials Facility
TAVERNIER CREEK MARINA	90800 OVERSEAS HWY	Tavernier		7.47	2	4	AE		Hazardous Materials Facility
THE HOME DEPOT STORE #6302	4555 OVERSEAS HIGHWAY	Marathon		-0.13	1	3	AE		Hazardous Materials Facility
THE HOME DEPOT STORE #6313	2811 NORTH ROOSEVELT BLVD	Key West		8.41	3	1	AE		Hazardous Materials Facility
WASTE MANAGEMENT INC. OF FLORIDA - KEY WEST	125 TOPPINO INDUSTRIAL DRIVE	Key West		2.30	1	2	AE		Hazardous Materials Facility
ADVENTURE ISLAND HELIPORT				1.60	1	3	VE		Heliport/Helipad
FISHERMENS HOSPITAL HELISTOP				4.85	2	3	AE		Heliport/Helipad
FLORIDA KEYS MEMORIAL HOSPITAL HELISTOP				5.05	2	1	AE		Heliport/Helipad
NEW MARINERS HOSPITAL HELISTOP				7.38	4	4	AE		Heliport/Helipad
PLANTATION DETENTION CENTER	53 HIGH POINT RD	Tavernier	33070	6.55	2	4	AE		Heliport/Helipad
MONROE COUNTY JUVENILE JUSTICE CENTER	5501 COLLEGE RD	Key West	33040	3.39	2	1	VE		Juvenile Correctional Institution
CITY OF KEY WEST EMERGENCY OPERATIONS CENTER (KEY WEST POLICE DEPT HEADQUARTERS)	1604 N ROOSEVELT BLVD	Key West	33040	5.64	3	1	AE		Law Enforcement
FLORIDA HIGHWAY PATROL TROOP E	3380 OVERSEAS HWY	Marathon	33050	7.80	3	3	AE		Law Enforcement
JUDGE JEFFERSON B BROWN COURTROOM COMPLEX (MONROE COUNTY SHERIFF'S OFFICE CIVIL DIVISION)	500 WHITEHEAD ST	Key West	33040	11.75		1			Law Enforcement
KEY COLONY BEACH POLICE DEPT HEADQUARTERS	600 W OCEAN DR	Marathon	33050	2.82	2	3	AE		Law Enforcement
KEY WEST POLICE STATION	525 ANGELA ST	Key West	33040	7.71	5	1			Law Enforcement
MONROE COUNTY SHERIFF CUDJOE KEY SUBSTATION	20950 OVERSEAS HWY	Summerland Key	33042	5.33	2	2	AE		Law Enforcement
MONROE COUNTY SHERIFF HEADQUARTERS	5525 COLLEGE RD	Key West	33040	3.20	1	1	VE		Law Enforcement
MONROE COUNTY SHERIFF ISLAMORADA SUBSTATION	86800 OVERSEAS HWY	Islamorada	33036	8.44	4	4	AE		Law Enforcement
MONROE COUNTY SHERIFF MARATHON SUBSTATION	3103 OVERSEAS HWY	Marathon	33050	6.20	3	3	AE		Law Enforcement
MONROE COUNTY SHERIFF SPOTTSWOOD SUBSTATION	88770 OVERSEAS HWY	Tavernier	33070	10.46	4	4			Law Enforcement
MONROE COUNTY SHERIFF'S OFFICE	148 GEORGIA ST	Tavernier	33070	9.09	4	4			Law Enforcement
U.S. CUSTOMS AND BORDER PROTECTION PORT OF ENTRY KEY WEST	301 SIMONTON ST	Key West	33040	4.67	2	1	AE		Law Enforcement

STATEWIDE REGIONAL EVACUATION STUDY – SOUTH FLORIDA

APPENDIX C – MONROE COUNTY

Name	Address	City	Zip	DEM Elev ²	Surge	Evac Zone	Fire	Flood	Facility Type
U.S. CUSTOMS AND BORDER PROTECTION PORT OF ENTRY KEY WEST (F.B.I. KEY WEST RESIDENT OFFICE)	301 SIMONTON ST	Key West	33040	4.67	2	1	AE		Law Enforcement
U.S. DRUG ENFORCEMENT ADMINISTRATION DEA KEY WEST FIELD OFFICE	3140 FLAGLER AVE	Key West	33040	3.05	1	1	AE		Law Enforcement
U.S. DRUG ENFORCEMENT ADMINISTRATION DEA KEY WEST FIELD OFFICE (FLORIDA DEPT OF LAW ENFORCEMENT KEY WEST FIELD OFFICE)	3140 FLAGLER AVE	Key West	33040	3.05	1	1	AE		Law Enforcement
COUNTY OF MONROE	213 KEY DEER BLVD	Big Pine Key	33043	4.12	1	2	AE		Library
COUNTY OF MONROE	700 FLEMING ST	Key West	33040	11.04		1			Library
COUNTY OF MONROE PUBLIC LIBRARY	3251 OVERSEAS HWY	Marathon	33050	6.11	2	3	AE		Library
Islamorada County Library (HELEN WADLEY BRANCH LIBRARY)	81850 OVERSEAS HWY	Islamorada	33036	9.05	4	4			Library
Islamorada County Library (HELEN WADLEY BRANCH LIBRARY)	81850 OVERSEAS HWY	Islamorada	33036	9.05	4	4			Library
Islamorada County Library (HELEN WADLEY BRANCH LIBRARY)	81850 OVERSEAS HWY	Islamorada	33036	9.05	4	4			Library
Ocean Reef Club Fire Station #26 (OCEAN REEF CLUB INC)	100 Anchor Drive	Ocean Reef	33037	4.89	2	4	AE		Library
GATO BUILDING - COUNTY ADMINISTRATOR	1100 SIMONTON ST	Key West	33040	7.98	4	1			Local Government Facility
HARVEY GOVERNMENT CENTER	1200 TRUMAN AVE	Key West		7.04	3	1			Local Government Facility
JUDGE JEFFERSON B BROWN COURTROOM COMPLEX	500 WHITEHEAD ST	Key West	33040	11.75		1			Local Government Facility
M.C. Mosquito Control Stock Island		Stock Island		4.33	2	1	AE		Local Government Facility
MONROE COUNTY COURTHOUSE	502 WHITEHEAD ST	Key West	33040	12.25		1			Local Government Facility
Murray E. Nelson Government Center	102050 Overseas Hwy	Key Largo	33037	8.05	3	4			Local Government Facility
Plantation Key Govt. Center				7.01	3	4	AE		Local Government Facility
Stock Island Public Service Building	5100 College Road	Key West	33040	3.98	2	1	AE		Local Government Facility
SUNSET KEY TRANSPORTATION ()	TRUMBO ROAD	Key West	33040	3.52	2	1	AE		Local Government Facility
CORAL SHORES HIGH SCHOOL	89901 OVERSEAS HWY	Tavernier	33070	8.80	4	4			Logistical Staging Area
Dog Track	3rd Street	Stock Island	33040	1.69	1	1	AE		Logistical Staging Area
FOUNDER'S PARK	87000 OVERSEAS HWY	Islamorada	33036	9.59	4	4			Logistical Staging Area
FRIENDSHIP PARK SITE	HIBISCUS LANE	Key Largo	33037	8.45	3	4			Logistical Staging Area
JOSE MARTI PARK	ROOSEVELT BLVD & JOSE MARTI D	Key West	33040	5.15	2	1			Logistical Staging Area
Jose Marti Park	Roosevelt Blvd & Jose Marti Dr	Key West	33040	3.19	2	1	AE		Logistical Staging Area
K Mart Shopping Center		Key Largo	33037	10.18	3	4			Logistical Staging Area

STATEWIDE REGIONAL EVACUATION STUDY – SOUTH FLORIDA

APPENDIX C – MONROE COUNTY

Name	Address	City	Zip	DEM Elev ²	Surge	Evac Zone	Fire	Flood	Facility Type
KEY WEST BIGHT PARKING AREA	WEST END OF MARGARET ST	Key West	33040	2.24	1	1	AE		Logistical Staging Area
KMART PARKING LOT	5575 OVERSEAS HWY	Marathon	33050	2.99	2	3	AE		Logistical Staging Area
KNIGHT'S KEY CAMPGROUND FIELD	KNIGHT'S KEY	Marathon	33050	1.67	1	3	AE		Logistical Staging Area
SALT PONDS BUNKER AREA	GOVERNMENT ROAD	Key West	33040	10.88	5	1	AE		Logistical Staging Area
SAN PABLO CATHOLIC CHURCH FIELD	550 122ND ST OCEAN	Marathon	33050	3.38	2	3	AE		Logistical Staging Area
SIGSBEE PARK & COMMUNITY CENTER	SIGSBEE BLVD & ARTHUR SAWYER	Key West	33040	6.04	3	1	AE		Logistical Staging Area
TAVERNIER TOWNE PARKING LOT	91200 OVERSEAS HWY	Tavernier	33070	4.99	2	4	AE		Logistical Staging Area
Tommy Roberts Stadium (NEEDS REVIEW)	KENNEDY DR	Key West	33040	2.59	1	1	AE		Logistical Staging Area
Trumbo Point - Seaplane Base	Trumbo Point	Key West	33040	4.30	2	1	AE		Logistical Staging Area
WICKER'S FIELD ESA	FLAGLER BETWEEN KENNEDY AND GLEN ARCHER	Key West	33041	3.94	2	1	AE		Logistical Staging Area
Bahia Honda State Park	36850 Overseas Highway	Bahia Honda Key	33043	1.79	1	2	AE		Marina
Bay View Inn Resort, Marina and General Store	3 North Conch Avenue	Conch Key	33050	2.00	1	3	AE		Marina
Coco Plum Yacht Club Pay Ramp (No Parking, Launch and Retrieve Only)	100 Ave I	Marathon	33050	2.46	1	3	AE		Marina
Cudjoe Gardens Marina And Dive Center (No Onsite Parking for Trailers)	477 Drost Drive	Sugarloaf Key	33042	1.65	1	2	AE		Marina
Dolphin Marina and Cottages	28530 Overseas Highway	Little Torch Key	33042	-0.64	1	2	AE		Marina
Everglades National Park - Flamingo Freshwater Boat Basin	#1 Flamingo Lodge Highway	Homestead	0	1.89	1	6	AE		Marina
Everglades National Park - Flamingo Saltwater Boat Basin	#1 Flamingo Lodge Highway	Flamingo	33034	1.42	1	6	VE		Marina
Islamorada Founders Park and Public Boat Ramp	87000 Overseas Highway	Plantation Key	33070	0.52	1	4	VE		Marina
John Pennekamp Coral Reef State Park	102601 Overseas Highway	Key Largo	33037	3.02	1	4	AE		Marina
Key West City Marina at Garrison Bight	1801 North Roosevelt Boulevard	Key West	33040	2.23	1	1	AE		Marina
Key West Yacht Club	2315 N ROOSEVELT BLVD	Key West	33040	3.03	1	1	AE		Marina
Oceanside Marina of Stock Island (No Trailer Parking)	5950 Peninsular Ave	Key West	33040	2.60	1	1	AE		Marina
ROBBIE'S RECYCLE & TRANSFER STATION (ROBBIE'S STOCK ISLAND)	END OF SHRIMP RD	Stock Island	33040	5.41	3	1	AE		Marina
(Boy Scouts)Brinton Environmental Center	23800 Overseas Highway	Summerland Key	33042	5.15	4	2	VE		MH/RV Park
Big Pine Key Fishing Lodge	33000 Overseas Highway	Big Pine Key	33043	14.04		2	AE		MH/RV Park
Camp Sawyer	33990 Overseas Highway	Big Pine Key	33043	8.51	5	2	AE		MH/RV Park
Florida National High Adventure Sea Base	73800 OVERSEAS Highway	Islamorada	33036	3.46	2	4	AE		MH/RV Park
Girl Scout Camp Weesumkee	34200 Overseas Highway	Big Pine Key	33043	7.02	4	2	AE		MH/RV Park
Leo's Trailer Park	5236 Suncrest Road	Key West	33040	2.08	1	1	AE		MH/RV Park

STATEWIDE REGIONAL EVACUATION STUDY – SOUTH FLORIDA

APPENDIX C – MONROE COUNTY

Name	Address	City	Zip	DEM Elev ²	Surge	Evac Zone	Fire	Flood	Facility Type
Breezy Pines R.V. Estates	29859 Overseas Highway	Big Pine Key	33043	3.88	2	2	AE		Mobile Home Park
Coco Palms	21575 Old State Road	Cudjoe Key	33042	0.63	1	2	AE		Mobile Home Park
Coconut Grove	6621 MALONEY Avenue	Key West	33040	1.55	1	1	AE		Mobile Home Park
Conch Trailer Park	3 N Conch Avenue	Conch Key	33050	4.52	3	3	AE		Mobile Home Park
Farnsworth Trailer Park	110 37th St - Gulf	Marathon	33050	4.12	2	3	AE		Mobile Home Park
Howard's Haven	31535 Avenue C	Big Pine Key	33043	1.22	1	2	AE		Mobile Home Park
Lions Lair Homeowners Assoc.	58950 Overseas Highway	Marathon	33050	5.40	3	3	AE		Mobile Home Park
Liz Trailer Park	5730 4th Avenue	Key West	33040	2.22	1	1	AE		Mobile Home Park
Mastic Trailer Park	645 United Street	Key West	33040	5.97	3	1			Mobile Home Park
Ocean Breeze Park West	308 Cypress Street	Duck Key	33050	2.31	2	3	AE		Mobile Home Park
Ocean Cove Trailer Port	92101 Overseas Highway	Tavernier	33070	5.96	2	4	AE		Mobile Home Park
Ocean Spray Trailer Park	6529 Maloney Avenue	Key West	33040	1.40	1	1	AE		Mobile Home Park
Olde Town Village	311 37th St Gulf	Marathon	33050	3.67	2	3	AE		Mobile Home Park
Paradise Point Mobile Home Park	99 Seaside Avenue	Key Largo	33037	1.95	1	4	AE		Mobile Home Park
Poinciana Mobile Home Park	1300 15th Court	Key West	33040	2.43	1	1	AE		Mobile Home Park
Roy's Trailer Park	6500 Maloney Avenue	Key West	33040	2.09	1	1	AE		Mobile Home Park
Seaside Resort Inc. A Condominium	55 Boca Chica Road	Key West	33040	0.47	1	2	AE		Mobile Home Park
Southernmost Cabana Resort	1015 Simonton Street	Key West	33040	6.52	3	1			Mobile Home Park
Stadium Mobile Home Park	1213 14th Street	Key West	33040	1.38	1	1	AE		Mobile Home Park
Stock Island Trailer Park	5244 Suncrest Road	Stock Island	33040	2.15	1	1	AE		Mobile Home Park
Summerland Palms Trailer Park	Overseas Highway	Summerland Key	33042	N.A.		2	AE		Mobile Home Park
Suncrest Landing Mobile Home Park	5176 Suncrest Road	Stock Island	33040	1.70	1	1	AE		Mobile Home Park
Sunny Isle Trailer Park	5350 3rd Avenue	Key West	33040	1.99	1	1	AE		Mobile Home Park
Sunset Harbor Trailer Village	5031 5th Avenue	Key West	33040	1.24	1	1	AE		Mobile Home Park
Terra Marine Park	502 24th St Ocean	Marathon	33050	1.67	1	3	AE		Mobile Home Park
The Hideaway	6531 Maloney Avenue	Key West	33040	1.39	1	1	AE		Mobile Home Park
Trailer Ranch By The Sea	72nd St Ocean	Marathon	33050	1.66	1	3	AE		Mobile Home Park
Trailerama Park	1571 Overseas Highway	Marathon	33050	3.86	2	3	AE		Mobile Home Park
Tropic Palms Mobile Home Park	6125 2nd Street	Key West	33040	4.19	3	1	AE		Mobile Home Park
Waters Edge Colony	5700 Laurel Avenue 70	Key West	33040	1.93	1	1	AE		Mobile Home Park
Woodson Rentals	6325 1st Street, Lot 32	Key West	33040	1.87	1	1	AE		Mobile Home Park
Woodson's Trailer Park	6325 1st Street, Lot 32	Key West	33040	1.87	1	1	AE		Mobile Home Park
USAF TETHERED AEROSTAT RADAR SITE	BLIMP RD	Summerland Key	33042	3.45	1	2	AE		National Guard
ALBERTSON'S POD	1100 Kennedy Bkvd	Key West	33040	4.23	2	1	AE		Point of Distribution

STATEWIDE REGIONAL EVACUATION STUDY – SOUTH FLORIDA

APPENDIX C – MONROE COUNTY

Name	Address	City	Zip	DEM Elev ²	Surge	Evac Zone	Fire	Flood	Facility Type
CONGREGATION B'NAIL ZION OF KEY WEST (SAINT PETERS CHURCH)	750 UNITED STREET	Key West	33040	8.10	4	1			Point of Distribution
KEY LARGO COMMUNITY PARK DDMS (Key Largo Community Park)	500 Saint Croix Pl	Key Largo	33037	4.67	2	4			Point of Distribution
KEY WEST HIGH SCHOOL	2100 FLAGLER AVE	Key West	33040	3.96	2	1	AE		Point of Distribution
LIGHTHOUSE BOAT CENTER	101000 OVERSEAS HWY	Key Largo	33037	9.45	3	4			Point of Distribution
MARATHON AIRPORT WEST (MARATHON AIRPORT)	9400 OVERSEAS HWY	Marathon	33050	3.99	2	3	AE		Point of Distribution
SCOTTY'S BIG PINE KEY	30351 OVERSEAS HWY	Big Pine Key	33043	4.32	2	2	AE		Point of Distribution
SUGARLOAF BAPTIST CHURCH	205 CRANE BLVD	Summerland Key	33042	1.20	1	2	AE		Point of Distribution
ISLAND CHRISTIAN SCHOOL	83400 OVERSEAS HWY	Islamorada	33036	6.12	3	4	AE		Private School
MARY IMMACULATE STAR OF THE SEA	700 TRUMAN AVE	Key West	33040	5.88	3	1			Private School
THE ACADEMY AT OCEAN REEF	395 S HARBOR DRIVE	Key Largo	33037	7.53	3	4	AE		Private School
ACADEMIC CONNECTIONS FOR EXCELLENCE	241 TRUMBO RD	Key West	33040	4.32	2	1	VE		Public School
ADULT/VOCATIONAL/COMMUNITY EDUCATION	5901 COLLEGE RD	Key West	33040	8.92	4	1	AE		Public School
BIG PINE ACADEMY	30220 OVERSEAS HWY	Big Pine Key		3.60	1	2	AE		Public School
CORAL SHORES HIGH SCHOOL	89901 OVERSEAS HWY	Tavernier	33070	8.80	4	4			Public School
GERALD ADAMS ELEMENTARY SCHOOL	5855 W COLLEGE RD	Key West	33040	6.83	3	1	AE		Public School
Glynn Archer School	1302 White Street	Key West	33040	6.01	3	1			Public School
HORACE O'BRYANT MIDDLE SCHOOL	1105 LEON ST	Key West	33040	3.65	2	1	AE		Public School
KEY LARGO K-8 SCHOOL	104801 OVERSEAS HWY	Key Largo	33037	9.10	3	4			Public School
KEY WEST COLLEGIATE SCHOOL	5901 COLLEGE RD	Key West	33040	8.92	4	1	AE		Public School
KEY WEST HIGH SCHOOL	2100 FLAGLER AVE	Key West	33040	7.54	3	1	AE		Public School
KEYS CENTER	241 TRUMBO RD	Key West	33040	4.32	2	1	VE		Public School
MARATHON HIGH SCHOOL	350 SOMBRERO BEACH RD	Marathon	33050	4.39	3	3	AE		Public School
MONROE COUNTY SUPERINTENDENT'S OFFICE	241 TRUMBO RD	Key West	33040	4.32	2	1	VE		Public School
MONROE JUVENILE DETENTION CENTER	5501 COLLEGE RD	Key West	33040	3.39	2	1	VE		Public School
OCEAN STUDIES CHARTER SCHOOL	92295 OVERSEAS HWY	Tavernier	33070	2.27	1	4	AE		Public School
Plantation Key SCHOOL	100 LAKE RD	Tavernier	33070	10.42	4	4	AE		Public School
POINCIANA ELEMENTARY SCHOOL	1407 Kennedy Drive	Key West	33040	6.11	3	1	AE		Public School
SIGSBEE CHARTER SCHOOL	939 FELTON RD	Key West	33040	5.95	3	1	AE		Public School
STANLEY SWITLIK ELEMENTARY SCHOOL	3400 OVERSEAS HWY	Marathon	33050	4.89	2	3	AE		Public School
SUGARLOAF SCHOOL	255 CRANE BLVD	Sugarloaf Key	33042	6.89	3	2	AE		Public School

STATEWIDE REGIONAL EVACUATION STUDY – SOUTH FLORIDA

APPENDIX C – MONROE COUNTY

Name	Address	City	Zip	DEM Elev ²	Surge	Evac Zone	Fire	Flood	Facility Type
TREASURE VILLAGE MONTESSORI CHARTER SCHOOL	86731 OVERSEAS HWY	Islamorada		5.90	3	4	AE		Public School
MILE MARKER 27B ON US-1 (F.K.A.A. Booster Station)	27	Ramrod Key	33043	3.91	1	2	AE		Public Water Supply
F.K.A.A. RO Plant & Storage Facility (FKAA - FLORIDA KEYS R.O. PLANTS)	7200 Front Street	Stock Island		6.35	3	1	VE		Public Water Supply - Plant
FKAA - FLORIDA KEYS R.O. PLANTS		Key West		5.09	2	3	AE		Public Water Supply - Plant
FKAA Admin/Pump Station	91620 Overseas Hwy	Tavernier	33070	6.91	4	4	AE		Public Water Supply - Plant
FLAMINGO		Flamingo		1.94	1	6	AE		Public Water Supply - Plant
FLORIDA KEYS AQUEDUCT - STOCK ISLAND GARAGE (F.K.A.A. Backpumping Station)	5226 COLLEGE ROAD	Key West		7.06	3	1	AE		Public Water Supply - Plant
LOOP ROAD EDUCATION CENTER		Ochopee		4.42	2	6	AE		Public Water Supply - Plant
F.K.A.A. Booster Station	3375 Overseas Hwy	Marathon	33050	2.14	1	3	AE		Public Water Supply - Tank
FKAA Water Storage Tank		Islamorada		8.36	4	4			Public Water Supply - Tank
FLORIDA KEYS AQUEDUCT - STOCK ISLAND PUMPING STATION (F.K.A.A. Storage Facility)	5226 COLLEGE ROAD	Key West		3.84	2	1	AE		Public Water Supply - Tank
GREATER MIAMI IN THE KEYS	94000 OVERSEAS HWY	Tavernier	33070	9.85	3	4	AE		Relief Agency
Bahia Honda State Park	36850 Overseas Highway	Big Pine Key	33043	19.76		2	AE		RV Park
Big Pine Key Moose Lodge 1585	381 Wilder Rd	Big Pine Key	33043	2.89	1	2	AE		RV Park
Boyd's Campground	6401 Maloney Avenue	Key West	33040	1.55	1	1	AE		RV Park
Brothers By The Bay	313-343 Barry Avenue	Little Torch Key	33042	1.67	1	2	AE		RV Park
CALUSA CONDO ASSN. INC.	325 Calusa	Key Largo	33037	11.24	4	4			RV Park
Campers Cove	101640 OVERSEAS Highway	Key Largo	33037	11.25	4	4			RV Park
Captain Jax Trailer Resort & Marina	103650 Overseas Highway	Key Largo	33037	12.23	4	4			RV Park
Coral Sands Trailer Park Inc.	95350 Overseas Highway	Key Largo	33037	5.37	2	4	AE		RV Park
Curry Hammock State Park	56200 Overseas Highway	Marathon	33050	6.62	2	3	AE		RV Park
Dalk Land LP	16780 Old State Rd 4A	Sugarloaf Key	33042	0.71	1	2	AE		RV Park
Dean's Trailer Park	31551 Avenue E	Big Pine Key	33043	2.02	1	2	AE		RV Park
Driftwood Trailer Park	92157 Overseas Highway	Tavernier	33070	5.20	2	4	AE		RV Park
El Mar RV Resort LLC	6700 Maloney Avenue	Key West	33040	1.71	1	1	AE		RV Park
Galway Bay R.V. & Mobile Home Park	1361 Overseas Highway	Marathon	33050	4.05	2	3	AE		RV Park
Geiger Key Marina	5 Geiger Road	E Rockland Key	33040	1.19	1	2	AE		RV Park
Grassy Key RV Park & Resort	58671 Overseas Highway	Marathon	33050	4.52	3	3	AE		RV Park
Jolly Roger Travel Park	59275 Overseas Highway	Marathon	33050	5.66	3	3	AE		RV Park
Key Lantern Motel & Trailer Park	82150 OVERSEAS Highway	Islamorada	33036	8.43	4	4			RV Park
Key Largo Kampground and Marina Condominium Assoc	101551 Overseas Highway	Key Largo	33037	10.75	4	4			RV Park

STATEWIDE REGIONAL EVACUATION STUDY – SOUTH FLORIDA

APPENDIX C – MONROE COUNTY

Name	Address	City	Zip	DEM Elev ²	Surge	Evac Zone	Fire	Flood	Facility Type
Keys RV/Mobile HomePark Condo Assoc.	6099 Overseas Highway	Marathon	33050	4.85	2	3	AE		RV Park
Kings Kamp	103620 Overseas Highway	Key Largo	33037	13.34	5	4			RV Park
Knight's Key Park & Marina	1 Knight's Key Boulevard	Marathon	33050	1.87	1	3	AE		RV Park
Largo Park	101600 Overseas Highway	Key Largo	33037	11.46	4	4			RV Park
Lazy Lakes	311 Johnson Road	Sugarloaf Key	33042	1.79	1	2	AE		RV Park
Long Key State Park	P O Box 776	Long Key	33001	2.41	1	4	AE		RV Park
Ocean Breeze Trailer Park (East)	1337 Ocean Breeze Avenue	Marathon	33050	1.58	1	3	AE		RV Park
Pelican RV Park & Motel	59151 Overseas Highway	Marathon	33050	5.32	3	3	AE		RV Park
Riptide Trailer Park	97680 Overseas Highway	Key Largo	33037	10.40	3	4			RV Park
Rock Harbor Marina Inc.	36 E 2nd Street	Key Largo	33037	9.61	3	4			RV Park
ROCK HARBOR MARINA EAST	36 E SECOND Street	Key Largo	33037	9.61	3	4			RV Park
Royal Palm R.V. Park	163 Cunningham Lane 1	Big Pine Key	33043	5.15	2	2	AE		RV Park
San Pedro Village	87401 Overseas Highway	Islamorada	33036	5.18	2	4	AE		RV Park
Seahorse Campground	201 County Road	Big Pine Key	33043	4.56	2	2	AE		RV Park
Sugarloaf KOA	251 County 939 Road	Sugarloaf Key	33042	2.80	1	2	AE		RV Park
Sunshine Key RV Resort	38801 Overseas Highway	Big Pine Key	33043	6.63	4	2	AE		RV Park
Travel Trailer Town	96401 Overseas Highway	Key Largo	33037	5.52	2	4	AE		RV Park
Waters Edge Marina LLC	685 11th Street	Marathon	33050	3.91	2	3	AE		RV Park
FLYING BONEFISH	59001 OVERSEAS HWY	Marathon	33050	1.52	1	3	VE		Seaplane Base
Trumbo Point - Seaplane Base	Trumbo Point	Key West	33040	4.30	2	1	AE		Seaplane Base
CORAL SHORES HIGH SCHOOL (CORAL SHORES HIGH SCHOOL (PF))	89901 OVERSEAS HWY	Tavernier	33070	8.80	4	4			Shelter
GATO BUILDING - COUNTY ADMINISTRATOR (GATO BUILDING)	1100 SIMONTON ST	Key West	33040	7.98	4	1			Shelter
HARVEY GOVERNMENT CENTER	1200 TRUMAN AVE	Key West		7.04	3	1			Shelter
Key Largo Bay Beach	103800 Overseas Highway	Key Largo	33037	5.38	3	4	AE		Shelter
KEY LARGO K-8 SCHOOL	104801 OVERSEAS HWY	Key Largo	33037	9.10	3	4			Shelter
KEY WEST HIGH SCHOOL (KEY WEST HIGH SCHOOL (PF))	2100 FLAGLER AVE	Key West	33040	7.54	3	1	AE		Shelter
LOWER KEYS MEDICAL CENTER	1200 KENNEDY DR	Key West	33040	6.57	3	1	AE		Shelter
MARATHON HIGH SCHOOL	350 SOMBRERO BEACH RD	Marathon	33050	4.39	3	3	AE		Shelter
MARATHON MANOR NURSING HOME	320 SOMBRERO BEACH RD	Marathon		1.59	1	3	AE		Shelter
Plantation Key Children's Shelter	73 High Point Road	Tavernier	33070	7.57	3	4	AE		Shelter
Plantation Key K-8 SCHOOL (Plantation Key School)	100 LAKE RD	Tavernier	33070	10.42	4	4	AE		Shelter
POINCIANA ELEMENTARY SCHOOL	1407 Kennedy Drive	Key West	33040	6.11	3	1	AE		Shelter

STATEWIDE REGIONAL EVACUATION STUDY – SOUTH FLORIDA

APPENDIX C – MONROE COUNTY

Name	Address	City	Zip	DEM Elev ²	Surge	Evac Zone	Fire	Flood	Facility Type
ST. JUSTIN THE MARTYR CATHOLIC CHURCH	105500 OVERSEAS HWY	Key Largo	33037	11.17	3	4			Shelter
STANLEY SWITLIK ELEMENTARY SCHOOL	3400 OVERSEAS HWY	Marathon	33050	4.89	2	3	AE		Shelter
SUGARLOAF K-8 SCHOOL (SUGARLOAF K-8 SCHOOL (PF))	255 CRANE BLVD	Sugarloaf Key	33042	6.89	3	2	AE		Shelter
TRINITY PRESBYTERIAN CHURCH	717 SIMONTON ST	Key West		10.61		1			Shelter
33RD STREET BOAT RAMP DDMS	33RD STREET, BAYSIDE	Marathon	33050	3.52	2	3	AE		Solid Waste Facility
47TH STREET MARTHON DDMS	US 1 AND 47TH STREET, BAYSIDE	Marathon	33050	4.88	2	3	AE		Solid Waste Facility
ALAN WORTZEL & PAMELA GILBERT	LOT 9 SUNRISE ISLE	Marathon	33050	1.41	1	3	VE		Solid Waste Facility
ALEXANDRA PEACOCK	910 Lobster Ln	Key Largo	33037	3.41	1	4	AE		Solid Waste Facility
ALEX'S AUTO WRECKING & PARTS	111 US Highway 1	Key West	33040	6.33	3	2	AE		Solid Waste Facility
ALL KEYS GAS SERVICE	30046 OVERSEAS HWY	Big Pine Key	33043	3.35	1	2	AE		Solid Waste Facility
ATLANTIC TRASH & TRANSFER SITE 2	NORTH SIDE OF MAGNOLIA STREET	Key Largo	33037	2.70	2	4	AE		Solid Waste Facility
ATLANTIC TRASH AND TRANSFER	101 MAGNOLIA STREET	Key Largo	33037	2.55	2	4	AE		Solid Waste Facility
BAYPOINT PARK DDMS	CROSS WAY	Saddlebunch Key	33040	2.66	1	2	AE		Solid Waste Facility
BEACHCOMBER MARINE	4250 Overseas Hwy	Marathon	33050	3.39	2	3	AE		Solid Waste Facility
BERNSTEIN PARK DDMS	5TH STREET AND 5TH AVENUE	Stock Island	33040	1.70	1	1	AE		Solid Waste Facility
BIG PINE PARK DDMS	SANDS AVE, BAYSIDE	Big Pine Key	33043	2.18	1	2	AE		Solid Waste Facility
BOOT KEY LF	SR931	Boot Key	33050	8.78	5	3	AE		Solid Waste Facility
BOW CHANNEL PEDESTRIAN BRIDGE	MM 20.5	Sugarloaf Key	33042	N.A.		2	VE		Solid Waste Facility
BOY SCOUTS PROPERTY MM 74 BAYSIDE DDMS	MM 74 BAYSIDE	Islamorada	33036	3.51	1	4	AE		Solid Waste Facility
BRIDLE PATH ESA	SOUTH ROOSEVELT BLVD	Key West	33041	2.10	1	1	VE		Solid Waste Facility
BULPO TRANSFER STATION	5675 5th Ave	Stock Island	33040	2.11	1	1	AE		Solid Waste Facility
CARROLL COLEMAN F B OF THE DIOC OF MIAMI ROM	2700 FLAGLER AVE	Key West	33040	1.75	1	1	AE		Solid Waste Facility
CARVAJAL TRANSFER STATION	4 TH AVENUE	Stock Island	33040	4.81	3	1	AE		Solid Waste Facility
CITY OF KEY WEST SOLID WASTE TRANSFER STATION	APP. 1400 FT N OF US-1 NEAR MILE MARKER	Key West	33040	3.32	2	2	AE		Solid Waste Facility
CORAL MARINE CONSTRUCTION	10610 7th Avenue Gulf	Marathon	33050	3.77	2	3	AE		Solid Waste Facility
CUDJOE KEY LANDFILL	CUDJOE KEY RD, WEST OF MM 21.5	Cudjoe Key	33042	17.21		2	AE		Solid Waste Facility
DARRYL CARTY 41ST STREET PROPERTY	41ST STREET	Marathon	33050	2.16	1	3	AE		Solid Waste Facility
DENNISON STREET ESA	DENNISON STREET	Marathon	33050	1.71	1	3	AE		Solid Waste Facility
DISCOUNT DUMPSTERS & DEMOLITION, INC	10651 7TH AVE GULF	Marathon	33050	2.50	1	3	AE		Solid Waste Facility

STATEWIDE REGIONAL EVACUATION STUDY – SOUTH FLORIDA

APPENDIX C – MONROE COUNTY

Name	Address	City	Zip	DEM Elev ²	Surge	Evac Zone	Fire	Flood	Facility Type
DISCOUNT DUMPSTERS AND DEMOLITION	890 15TH STREET, OCEAN	Marathon	33050	2.75	2	3	AE		Solid Waste Facility
DISCOUNT DUMPSTERS AND DEMOLITION	4540 OVERSEAS HIGHWAY	Marathon	33050	3.94	2	3	AE		Solid Waste Facility
DISCOUNT ROCK AND SAND	10525 AVIATION BLVD	Marathon	33050	3.78	2	3	AE		Solid Waste Facility
EVANS ENVIRONMENTAL	111 US HWY 1	Key West	33040	5.08	2	2	AE		Solid Waste Facility
EVENT'S FIELD ESA	9805 Overseas Hwy	Marathon	33050	2.84	2	3	AE		Solid Waste Facility
FAIRWAY MARKET	3896 Overseas Hwy	Marathon	33050	4.77	2	3	AE		Solid Waste Facility
FARO BLANCO BAYSIDE DDMS	1996 Overseas Hwy	Marathon	33050	3.61	2	3	AE		Solid Waste Facility
FARO BLANCO OCEANSIDE DDMS	15TH STREET, OCEAN	Marathon	33050	2.86	2	3	AE		Solid Waste Facility
FFGM LLC PROPERTY	990 41ST STREET	Marathon	33050	4.37	2	3	AE		Solid Waste Facility
FLEMMING KEY LF	SW CORNER OF FLEMMING KEY	Flemming Key	33040	5.89	3	1	AE		Solid Waste Facility
FLORIDA KEYS WILD BIRD REHABILITATION CENTER	93600 Overseas Hwy	Tavernier	33070	2.58	1	4	AE		Solid Waste Facility
HARBOR DRIVE BOAT RAMP DDMS	HARBOR DRIVE, BAYSIDE	Marathon	33050	3.43	2	3	AE		Solid Waste Facility
HARRY HARRIS PARK DDMS	EAST BEACH ROAD	Tavernier	33070	4.36	2	4	VE		Solid Waste Facility
HJ3 INC (ADJCENT TO FORMER WILD BILLS LOCATION)	PARCELS 00374680 000000 AND 00374690-00	Grassy Key	33050	0.60	1	3	AE		Solid Waste Facility
HOOD RENTALS INC	SUNSET ROAD	Tavernier	33070	1.71	1	4	AE		Solid Waste Facility
JO-JO'S ESA	59720 Overseas Hwy	Marathon	33050	3.13	2	3	AE		Solid Waste Facility
JOSE PUPO COMPLAINT	200 Normandy Dr	Tavernier	33070	6.55	2	4	AE		Solid Waste Facility
KCB 03 ESA	8TH STREET, SOUTH OF TENNIS COURTS	Key Colony Beach	33051	2.43	1	3	AE		Solid Waste Facility
KCB 04 ESA	8TH STREET AND OCEAN DRIVE WEST	Key Colony Beach	33051	4.10	2	3	AE		Solid Waste Facility
KCB 05 ESA	OCEAN DR E, BETWEEN 2ND AND 3RD STREETS	Key Colony Beach	33051	3.49	2	3	AE		Solid Waste Facility
KEY LARGO COMMUNITY PARK DDMS	500 Saint Croix Pl	Key Largo	33037	4.67	2	4			Solid Waste Facility
KEY LARGO DUMP (OLD)	SR905A	Key Largo	33037	10.76	3	4	AE		Solid Waste Facility
KEY LARGO LANDFILL	STATE ROAD 905	Key Largo	33037	42.85		4			Solid Waste Facility
KEY LIME ROLLOFF SERVICES	86550 OVERSEAS HWY	Islamorada	33036	4.64	2	4	AE		Solid Waste Facility
KEY WEST TRANSFER STATION AND HAULING SERVICE INC	6500 FRONT STREET	Key West	33040	3.45	3	1	AE		Solid Waste Facility
KNIGHTS KEY ESA	KNIGHTS KEY	Marathon	33050	1.67	1	3	AE		Solid Waste Facility
L & L STORAGE	2188 Overseas Hwy	Marathon	33050	2.02	2	3	AE		Solid Waste Facility
LAUREL ROAD	LAUREL ROAD	Stock Island	33040	-0.05	1	1	AE		Solid Waste Facility
LEITH DENNIS	245 Oleander Dr	Tavernier	33070	3.51	2	4	AE		Solid Waste Facility

STATEWIDE REGIONAL EVACUATION STUDY – SOUTH FLORIDA

APPENDIX C – MONROE COUNTY

Name	Address	City	Zip	DEM Elev ²	Surge	Evac Zone	Fire	Flood	Facility Type
LONG KEY LANDFILL	US1, LONG KEY, BETWEEN MM67 & 68	Long Key	33050	52.54		4	AE		Solid Waste Facility
LONG KEY TRANSFER STATION	WEST OF US 1 AT MM 68.5	Long Key	33001	2.73	2	4	VE		Solid Waste Facility
MARATHON COMMUNITY PARK DDMS	CITY OF MARATHON	Marathon	33050	5.16	2	3	AE		Solid Waste Facility
MCCOY INDIGENOUS PARK ESA	ATLANTIC & WHITE STREET	Key West	33041	3.14	1	1	AE		Solid Waste Facility
MIDDLE TORCH KEY	MIDDLE TORCH RD	Middle Torch Key	33042	-0.19	1	2	AE		Solid Waste Facility
MITCHELL TANK SERVICE	78 Hibiscus Ln	Key Largo	33037	7.46	3	4			Solid Waste Facility
MM 84.2 BAYSIDE DDMS	MM 84.2 BAYSIDE	Islamorada	33036	1.31	1	4	AE		Solid Waste Facility
NATIONAL KEY DEER REFUGE, SUGARLOAF KEY	CRANE BOULEVARD	Upper Sugarloaf Key	33042	2.30	1	2	AE		Solid Waste Facility
NEW ROCKLAND RECYCLING CENTER	US HIGHWAY-1 @ MM9	Key West	33040	1.98	1	2	AE		Solid Waste Facility
NEW STOCK ISLAND PROPERTIES LLC	SHRIMP ROAD	Key West	33040	2.67	1	1	AE		Solid Waste Facility
OLD HIGHWAY MM 90.2 OCEAN DDMS	MM 90.2 OCEAN	Plantation Key	33036	2.28	1	4	AE		Solid Waste Facility
OUTDOOR RESORTS	65821 OVERSEAS HWY	Long Key	33001	1.69	1	4	AE		Solid Waste Facility
PRICE CUTTER'S - BIG PINE SITE	75 INDUSTRIAL RD	Big Pine Key	33043	2.35	1	2	AE		Solid Waste Facility
PRICE CUTTERS ROCKLAND	111 US Highway 1	Key West	33040	5.23	2	2	AE		Solid Waste Facility
PULPO TRANSFER STATION	CALLE DOS ST ROCKLAND KEY	Key West	33040	4.57	2	2	AE		Solid Waste Facility
QUAY-MARATHON ESA	12650 Overseas Hwy	Marathon	33050	2.69	1	3	VE		Solid Waste Facility
RAUL CISNEROS	103 41ST STREET	Marathon	33050	2.74	2	3	AE		Solid Waste Facility
REST AREA MM 80 BAYSIDE DDMS	MM 80 BAYSIDE	Islamorada	33036	5.79	3	4	AE		Solid Waste Facility
ROBBIE'S RECYCLE & TRANSFER STATION	END OF SHRIMP RD	Stock Island	33040	5.41	3	1	AE		Solid Waste Facility
ROCKLAND KEY COUNTY DDMS	MM 8.5, BAYSIDE	Key West	33040	7.29	3	2	AE		Solid Waste Facility
ROCKLAND RECYCLING CENTER	MILE MARKER 8.8 US-1	Key West	33040	4.06	2	2	AE		Solid Waste Facility
SCHOOL BOARD OF MONROE COUNTY	320 SOMBRERO BEACH RD	Marathon	33050	2.40	2	3	AE		Solid Waste Facility
SCHOONER CONDOMINIUM	605 Sombrero Beach Rd	Marathon	33050	6.46	3	3	AE		Solid Waste Facility
SERENITY COVE ESA	12550 OVERSEAS HWY	Marathon	33050	3.39	2	3	AE		Solid Waste Facility
SOUTHWINDS PARK DDMS	MM 82 OCEAN	Islamorada	33036	6.20	3	4	AE		Solid Waste Facility
STATE LANDS, PENNEKAMP CORAL REEF STATE PARK MANAGED	MM 97, BAYSIDE	Key Largo	33037	1.09	1	4	AE		Solid Waste Facility
STOCK ISLAND LF (SOUTHERNMOST WTE & KEY WEST LF)	JUNIOR COLLEGE RD	Key West	33040	85.66		1	AE		Solid Waste Facility
STOCK ISLAND RECYCLE AND TRANSFER STATION	5631 4TH AVE STOCK ISLAND	Key West	33040	3.11	1	1	AE		Solid Waste Facility
SUNSET KEY TRANSPORTATION	TRUMBO ROAD	Key West	33040	3.52	2	1	AE		Solid Waste Facility
TAMI MARIE BAILEY PROPERTY	27H Miriam St	Stock Island	33040	1.27	1	1	AE		Solid Waste Facility
TARZAN TREE CARE	AT KICKIN BACK FOOD MART	Summerland Key	33042	3.43	1	2	VE		Solid Waste Facility

STATEWIDE REGIONAL EVACUATION STUDY – SOUTH FLORIDA

APPENDIX C – MONROE COUNTY

Name	Address	City	Zip	DEM Elev ²	Surge	Evac Zone	Fire	Flood	Facility Type
TARZAN TREE SERVICE OF THE KEYS	22864 Overseas Hwy	Summerland Key	33042	7.64	3	2	VE		Solid Waste Facility
TOPPINO BIG COPPITT PROPERTY	MM 10, BAYSIDE	Key West	33040	2.86	1	2	VE		Solid Waste Facility
TRAVEL TOWN TRAILER PARK	96401 Overseas Hwy	Key Largo	33037	5.32	2	4	AE		Solid Waste Facility
TRUMAN ANNEX WATERFRONT ESA	TRUMAN ANNEX	Key West	33041	6.26	3	1	AE		Solid Waste Facility
TRUMAN ANNEX WATERFRONT SITE2 ESA DDMS	TRUMAN ANNEX CITY OF KEY WEST	Key West	33040	6.14	3	1	AE		Solid Waste Facility
TRUMBO ROAD ESA	null	Key West	33041	3.88	2	1	AE		Solid Waste Facility
US 1 MM 77 BAYSIDE DDMS	MM 77 BAYSIDE	Islamorada	33036	2.86	2	4	AE		Solid Waste Facility
VACLAV PERSL PROPERTY (VACLAV PERSL PROPERTY)	58744 US 1	Marathon	33050	2.31	1	3	AE		Solid Waste Facility
WET NET PROPERTY DDMS	MM 81.1, OCEAN	Islamorada	33036	2.48	1	4	AE		Solid Waste Facility
WICKER'S FIELD ESA	FLAGLER BETWEEN KENNEDY AND GLEN ARCHER	Key West	33041	3.94	2	1	AE		Solid Waste Facility
WILD BILL'S ESA	57478 Overseas Hwy	Marathon	33050	3.11	2	3	AE		Solid Waste Facility
BIG PINE KEY ROAD PRISON (MALE)	450 KEY DEER BLVD	Big Pine Key	33043	3.55	1	2	AE		State Government Facility
BIG PINE KEY ROAD PRISON (MALE)	450 KEY DEER BLVD	Big Pine Key	33043	3.55	1	2	AE		State Government Facility
BIG PINE KEY ROAD PRISON (MALE)	450 KEY DEER BLVD	Big Pine Key	33043	3.55	1	2	AE		State Government Facility
DEPT OF TRANSPORTATION OPERATIONS CENTER	3100 OVERSEAS HIGHWAY	Marathon	33050	4.59	2	3	AE		State Government Facility
DISTRICT 5 SATELITE OFFICE	3 LA CROIX CT	Key Largo	33037	7.20	3	4	AE		State Government Facility
FLORIDA HIGHWAY PATROL TROOP E (FHP STATION TRP E / DL OFFICE)	3380 OVERSEAS HWY	Marathon	33050	7.80	3	3	AE		State Government Facility
FT ZACHARY TAYLOR MUSEUM	SOUTHARD ST	Key West	33040	8.69	5	1			State Government Facility
KEYS MARINE LABORATORY	68486 US HWY 1	Layton	33050	1.63	1	4	VE		State Government Facility
MANAGER RESIDENCE	36850 OVERSEAS HWY	Big Pine Key	33043	2.45	1	2	AE		State Government Facility
OLD CITY HALL	510 GREENE ST	Key West	33040	1.81	1	1	AE		State Government Facility
OLD STATE ARMORY	600 WHITE ST	Key West	33040	4.56	2	1	AE		State Government Facility
Anchorage Resort & Yacht Club				1.45	3	4	AE		Wastewater Facility
Angler's Reef				9.38	4	4	AE		Wastewater Facility
Bahia Honda State Park #3				5.32	1	2	AE		Wastewater Facility
Bay Harbour Condo				6.34	2	4	AE		Wastewater Facility
Bay Point Wastewater Treatment Plant				2.35	1	2	AE		Wastewater Facility
Beacon Reef Condominium				5.80	2	4	AE		Wastewater Facility
Bentley's Restaurant				4.12	2	4	AE		Wastewater Facility
Big Coppitt WWTP				3.80	2	2	AE		Wastewater Facility
Big Pine Key Fishing Lodge WWTF				3.31	2	2	AE		Wastewater Facility

STATEWIDE REGIONAL EVACUATION STUDY – SOUTH FLORIDA

APPENDIX C – MONROE COUNTY

Name	Address	City	Zip	DEM Elev ²	Surge	Evac Zone	Fire	Flood	Facility Type
Big Pine Key Road Prison				3.37	1	2	AE		Wastewater Facility
Big Pine Key School				3.60	1	2	AE		Wastewater Facility
Big Pine Motel				4.69	2	2	AE		Wastewater Facility
Big Pine Plaza Shopping Center				3.53	1	2	AE		Wastewater Facility
Boca Chica Naval Air Station				3.71	2	2	AE		Wastewater Facility
Boy Scouts Of America - Seabase Summerland Key				3.54	1	2	AE		Wastewater Facility
Boy Scouts Of America Sea Base STP				5.89	1	4	AE		Wastewater Facility
Breezy Palms Resort Motel				5.15	3	4	AE		Wastewater Facility
Breezy Pines Trailer Park				3.56	1	2	AE		Wastewater Facility
Cafe Largo STP				9.31	3	4			Wastewater Facility
Caloosa Cove Sanitary Sewers, Inc.				5.10	2	4	AE		Wastewater Facility
Careless Navigator				2.98	1	4	AE		Wastewater Facility
Casa Cayo Condo STP				3.02	2	3	AE		Wastewater Facility
CEMEX LLC - Marathon Concrete Batch Plant				4.13	2	3	AE		Wastewater Facility
CEMEX LLC - Tavernier CBP				3.55	2	4	AE		Wastewater Facility
Charley Toppino and Sons, Inc.				-2.06	1	2	AE		Wastewater Facility
Cheeca Lodge				3.52	2	4	AE		Wastewater Facility
Chesapeake Resort WWTP				5.19	2	4	AE		Wastewater Facility
City of Marathon Area 3 WWTP				2.96	2	3	AE		Wastewater Facility
City of Marathon Area 4 WWTP				2.42	1	3	AE		Wastewater Facility
City of Marathon Area 5 Little Venice WWTP				2.48	2	3	AE		Wastewater Facility
City of Marathon Area 7 WWTP				5.95	3	3	AE		Wastewater Facility
Coral Grill Restaurant				6.96	3	4	AE		Wastewater Facility
Coral Harbor Club				-1.79	2	4	AE		Wastewater Facility
Coral Shores Coin Laundry				5.77	2	4	AE		Wastewater Facility
Crazy Fish Bar and Grill				7.85	3	2	AE	5	Wastewater Facility
Days Inn and Suites				1.78	1	4	AE		Wastewater Facility
Duck Key Wastewater Cooperative				4.30	3	3	AE		Wastewater Facility
Executive Bay Club Condo				7.98	3	4	AE		Wastewater Facility
Fiesta Key KOA				1.09	1	4	AE		Wastewater Facility
Flamingo Sewage Treatment Plant				1.79	1	6	AE		Wastewater Facility
Futura Yacht Club				2.25	1	4	AE		Wastewater Facility
Green Turtle Inn STP				8.75	4	4			Wastewater Facility
Guidance Clinic Of The Middle Keys				4.46	2	3	AE		Wastewater Facility

STATEWIDE REGIONAL EVACUATION STUDY – SOUTH FLORIDA

APPENDIX C – MONROE COUNTY

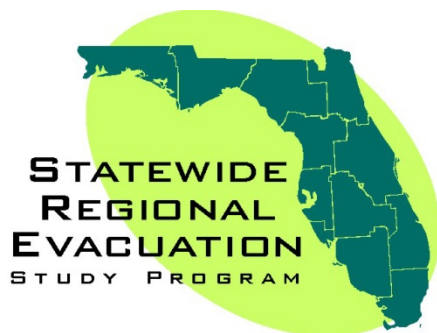
Name	Address	City	Zip	DEM Elev ²	Surge	Evac Zone	Fire	Flood	Facility Type
Hampton Inn				4.60	3	4	VE		Wastewater Facility
Harbor Lights Motel Of Holiday Isle				2.53	1	4	AE		Wastewater Facility
Holiday Isle Resort				4.43	2	4	AE		Wastewater Facility
Howard Johnson's Islamorada At Holiday Isle				4.00	2	4	AE		Wastewater Facility
Islamorada Bakery - Restaurant				9.64	4	4	AE		Wastewater Facility
Islamorada Grille				7.16	3	4	AE		Wastewater Facility
Islamorada Laundry				8.97	4	4	AE		Wastewater Facility
Islamorada-Village of Islands				10.61	4	4			Wastewater Facility
Island Grille				4.15	2	4	AE		Wastewater Facility
Islander Bayside				8.33	4	4			Wastewater Facility
Islander Motel				2.66	1	4	AE		Wastewater Facility
KARINA BAY RESORT LLC				1.31	1	4	VE		Wastewater Facility
Key Colony Beach, City Of				3.87	2	3	AE		Wastewater Facility
Key Haven Utility				4.14	1	1	AE		Wastewater Facility
Key Largo WWTP				5.24	2	4	AE		Wastewater Facility
Key Largo, Long Key & Cudjoe Key Residuals Transfer Stations				4.17	2	4	AE		Wastewater Facility
Key RV Park				7.95	2	3	AE		Wastewater Facility
Key West Resort Utility				4.35	3	1	AE		Wastewater Facility
La Siesta Resort				8.64	4	4			Wastewater Facility
La Siesta Seas LLC dba Lorelei of Islamorada				5.07	2	4	AE		Wastewater Facility
Layton, City of - WWTP				4.25	2	4	AE		Wastewater Facility
Lazy Days Restaurant				2.87	1	4	AE		Wastewater Facility
Lazy Lakes Campgrounds				0.99	1	2	AE		Wastewater Facility
Little Palm Island				2.65	1	2	AE		Wastewater Facility
Long Key Townhouse Condominium				2.87	2	4	AE		Wastewater Facility
Looe Key Reef Resort				3.18	1	2	AE		Wastewater Facility
Lucky's Landing				1.12	1	2	AE		Wastewater Facility
Maison Matecumbe				7.83	4	4	AE		Wastewater Facility
Mangrove Mama's Restaurant				5.20	1	2	AE		Wastewater Facility
Marathon Airport Terminal East (Marathon Airport Terminal)	10600 Aviation Blvd	Marathon		2.58	2	3	AE		Wastewater Facility
Marathon, City of - Area 6				2.41	1	3	AE		Wastewater Facility
Marker 88 Restaurant STP				4.88	2	4	AE		Wastewater Facility
Marley's Barside Grill				0.48	3	4	AE		Wastewater Facility

STATEWIDE REGIONAL EVACUATION STUDY – SOUTH FLORIDA

APPENDIX C – MONROE COUNTY

Name	Address	City	Zip	DEM Elev ²	Surge	Evac Zone	Fire	Flood	Facility Type
Ma's Fish Camp				8.78	4	4			Wastewater Facility
Matecumbe Resort				2.91	1	4	AE		Wastewater Facility
Maytag Coin Laundry				4.71	2	3	AE		Wastewater Facility
Monroe Concrete Products Inc - Toppino CBP				7.87	3	2	AE		Wastewater Facility
Monroe Regional Service Center				5.47	2	3	AE		Wastewater Facility
Morada Bay Restaurant STP				7.58	4	4			Wastewater Facility
North WWTP				3.63	2	4	AE		Wastewater Facility
Ocean Harbour Condominium				12.29	4	4			Wastewater Facility
Oceanside Isle Apartment				3.20	2	4	VE		Wastewater Facility
Office Depot Plaza				4.41	2	3	AE		Wastewater Facility
Old Tavernier Restaurant				1.89	1	4	AE		Wastewater Facility
Outdoor Resorts At Long Key				5.36	2	4	AE		Wastewater Facility
Palms Of Islamorada Condominium				4.36	2	4	AE		Wastewater Facility
Papa Joe's Restaurant				2.95	2	4	AE		Wastewater Facility
Pelican Cove Condominium				5.06	2	4	AE		Wastewater Facility
Pelican Motel & Trailer Park				3.37	2	3	VE		Wastewater Facility
Pelican Plaza WWTF				2.26	1	4	AE		Wastewater Facility

This page intentionally left blank.



Funding was provided by the Florida Legislature with funding from the Federal Emergency Management Agency (FEMA) through the Florida Division of Emergency Management. Local match was provided by the South Florida Regional Council and the counties of Broward, Miami-Dade and Monroe.

Florida Division of Emergency Management

Bryan Koon, Director

2255 Shumard Oak Boulevard

Tallahassee, Florida 32399



Prepared and published by the
South Florida Regional Council, 3440 Hollywood Boulevard, Suite 140
Hollywood, Florida 33021
Tel: (954) 985-4416, Fax: (954) 985-4417, Website: www.sfregionalcouncil.org
Study Manager: Manny Cela
Statewide Program Manager: Elizabeth Payne, Northeast Florida Regional Council