



MEMORANDUM

AGENDA ITEM #IV.A

DATE: MAY 4, 2015

TO: BOARD MEMBERS

FROM: STAFF

SUBJECT: NEW NATIONAL POPULATION ESTIMATES AND STATE POPULATION POJECTIONS

Census Bureau – National Population Estimates

Each year, the Census Bureau releases annual estimates of the resident population for each county in the United States. These include an annual estimate from the most recent decennial census forward, with detail on births and deaths, as well as domestic and international migration. On March 26, 2015, the Census Bureau released annual estimates as of July 1 for the period from April 1, 2010 to July 1, 2014. These estimates are useful for analyzing the size and pace of growth for counties, metropolitan regions and states across the nation, as well as the sources of that growth.

Highlights from the Census Bureau estimates for the period from April 1, 2000 to July 1, 2014 (see Attachment 1 – Southeast Florida: Regions and Connectivity):

- The Miami-Fort Lauderdale-West Palm Beach MSA grew by 363,520 residents (6.5%) and holds eighth place among the nation's Metropolitan Statistical Areas, with a 2014 population of 5,929,819.
- Miami-Dade County has the 7th largest population among the nation's counties, while Broward County is 17th and Palm Beach County is 27th.
- Southeast Florida grew by 394,606 (6.4%) to 6,596,130. This region, covered by Seven50, would rank 5th in the nation if it were an MSA.
- International migration accounted for almost 2 in every 3 new residents in the region (67.3%), while natural increase (19.6%) and net domestic migration (13.1%) accounted for the remainder.
- Miami-Dade County absorbed more than 160,000 new international migrants, at the same time that it saw net domestic out-migration of almost 50,000 residents.



South Florida Regional Council
3440 Hollywood Boulevard, Suite 140, Hollywood, Florida 33021
954.985.4416 Phone, 954.985-4417 FAX
www.sfregionalcouncil.org

BEBR – State of Florida Population Estimates and Projections

Each year in the fall, the University of Florida’s Bureau of Economic and Business Research (BEBR) prepares population estimates for the counties and municipalities of the State of Florida as of April 1 of the current year, under contract with the Florida Legislature’s Office of Economic and Demographic Research. These estimates serve as a basis for population projections for counties in the State of Florida, which are usually issued in the spring of the following year. The estimates for April 1, 2014 were released in late 2014, and projections based on those estimates were released in early April. These include county projections in 5-year increments from 2015 to 2040. These projections are useful for understanding the likely pace and distribution of future county growth within the State of Florida. The Census Bureau does not produce population projections for counties, so the projections prepared by BEBR are considered the “official” projections for the State’s policy and budgeting purposes.

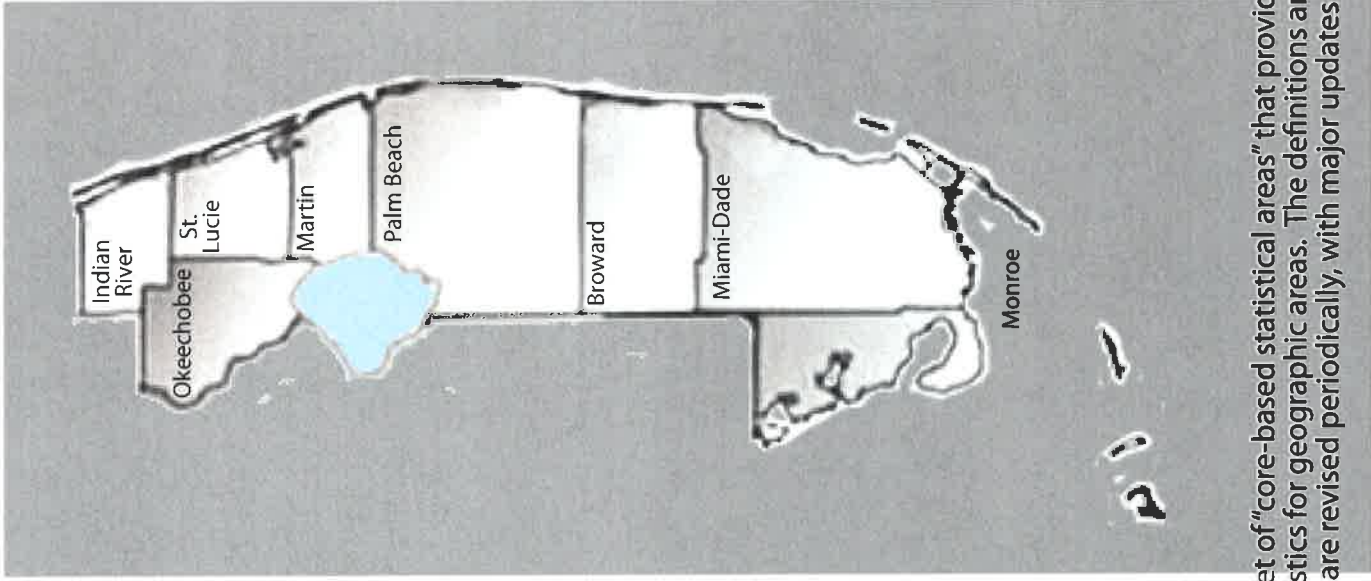
Highlights from BEBR’s population projections to 2040 (see Attachment 2):

- Southeast Florida is projected to reach a resident population of 8.1 million in 2040, an increase of 1.6 million (24.6%) in 25 years.
- Although all seven counties are projected to have positive growth, Miami-Dade County leads the region with an increase of 699,900 residents, followed by Palm Beach County with 359,200, Broward with 286,900 and St. Lucie County with 169,200.
- Monroe County’s projected population is now increasing, although in each of the previous sets of projections this decade the population was shown as decreasing.
- When comparing this year’s projections with last year’s, the Southeast Florida region saw a significant increase of over 180,000 in the projected 2040 resident population, driven mostly by increases for Miami-Dade County and Broward County. This suggests that the pace of population growth in South Florida has substantially recovered from a slowdown during the Great Recession.

Recommendation

Information only.

"Southeast Florida: Regions and Connectivity"



Sebastian-Vero Beach MSA

Port St. Lucie MSA

**Miami-Ft. Lauderdale-
West Palm Beach MSA**

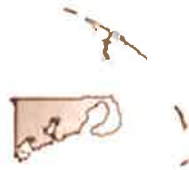


Metropolitan Statistical Areas (MSAs) are well-known and broadly used to analyze regional trends. The 7-county area we call Southeast Florida (made up of the two Regional Planning Council jurisdictions, and the study area for Seven50) includes three MSAs: Miami-Fort Lauderdale-West Palm Beach; Port St. Lucie; and Sebastian-Vero Beach. The general concept of a metropolitan statistical area is that of an area containing a large population nucleus and adjacent communities that have a high degree of integration with that nucleus, as expressed by the employment interchange measure.

Okeechobee Metropolitan Region

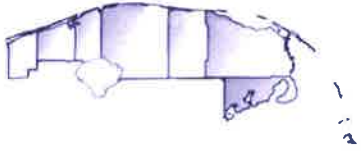


Key West Metropolitan Region



The concept of a metropolitan statistical area closely parallels that of the metropolitan statistical area, but a metropolitan statistical area features a smaller nucleus. Although we recognize the many linkages between Monroe County and the rest of South Florida, the criteria used by the Census Bureau are not sufficient to include it in the Miami-Fort Lauderdale-West Palm Beach MSA. Instead, it has been designated the Key West Metropolitan Statistical Area. Okeechobee County, which is outside the scope of Seven50 and of the two Regional Planning Councils, is also a Metropolitan Statistical Area.

Seven50



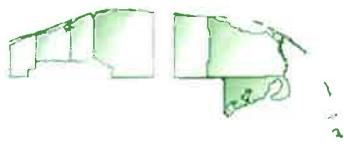
**Miami-Ft. Lauderdale Port St. Lucie
Combined Statistical Area**

Combined Statistical Areas (CSAs) link MSAs and Metropolitan Statistical Areas that have high levels of integration based on the employment interchange measure. The Miami-Fort Lauderdale-Port St. Lucie CSA brings together the three MSAs in Southeast Florida and the Okeechobee Metropolitan Statistical Area.



**Treasure Coast
Regional Planning Council**

**South Florida
Regional Planning Council**



The Office of Management and Budget defines a set of "core-based statistical areas" that provide a nationally consistent set of delineations for collecting, tabulating and publishing Federal statistics for geographic areas. The definitions and names of these areas, all of which use counties as the basic building blocks, are revised periodically, with major updates after every decennial census.



Overview of Census Bureau Population Estimates for Southeast Florida

Census population estimates for July 1, 2014, released in March, 2015, indicate that Miami-Fort Lauderdale-West Palm Beach continues to hold eighth place among the nation's Metropolitan Statistical Areas (MSAs), with a population of 5,929,819. Miami-Dade County has the 7th largest population among the nation's counties, Broward County is 17th and Palm Beach County is 27th. If current trends continue, both the Washington-Arlington-Alexandria and Miami-Fort Lauderdale-West Palm Beach MSAs should move up one position in the ranking in the next 2-3 years, surpassing the Philadelphia-Camden-Wilmington MSA, which is growing more slowly.

Between April 1, 2010, and July 1, 2014, the population of Southeast Florida (Seven50) grew from 6,201,524 to 6,596,130, an increase of 394,606 (6.4%). Miami-Dade County led the region with 164,857 new residents (6.6%), followed by Broward County (121,087, 6.9%) and Palm Beach County (77,576, 5.9%).

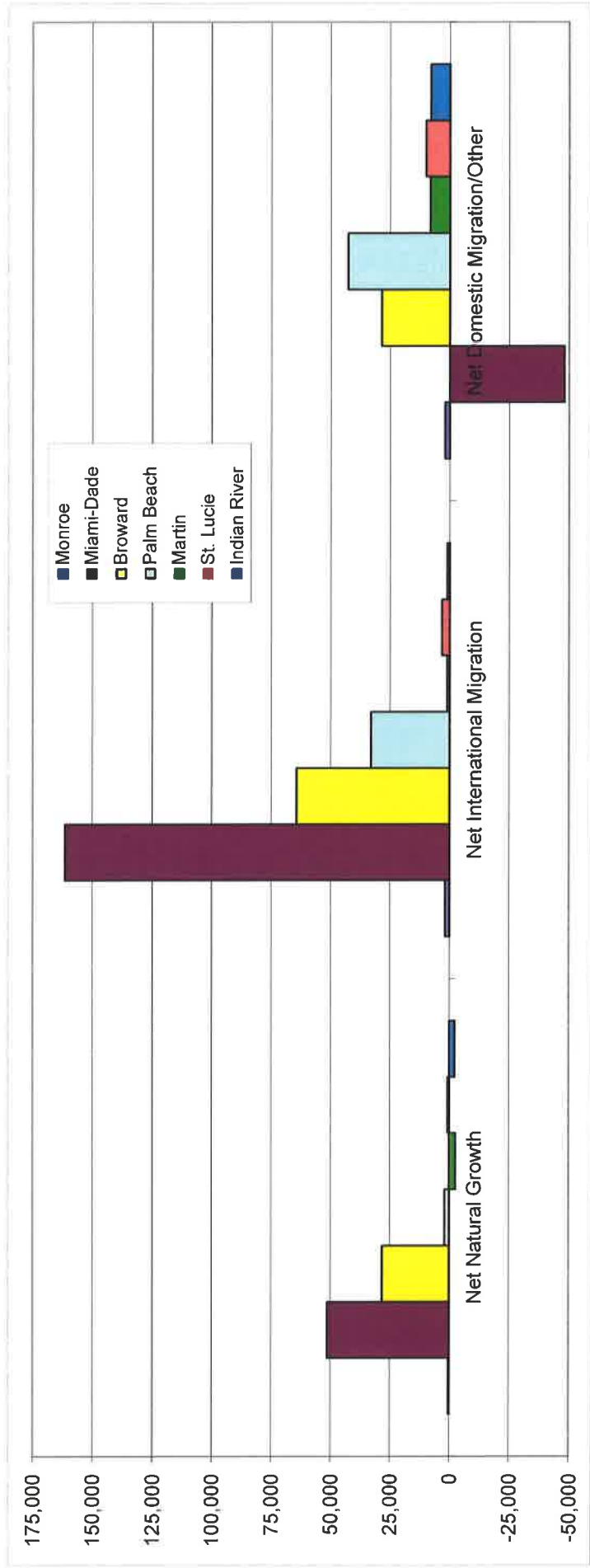
Over the reference period, international migration accounted for almost 2 in every 3 new residents in the region (67.3%), while natural increase (19.6%) and net domestic migration (13.1%) accounted for the remainder. Miami-Dade County stood out for the absorption of more than 160,000 new international migrants, at the same time that it saw net domestic out-migration of almost 48,000 residents. Both Broward County and Palm Beach County showed significant international migration, as well as net domestic in-migration, some of which most likely came from Miami-Dade County. Both Martin County and Indian River County lost population to net natural decrease (the difference between births and deaths), but grew through international and domestic in-migration.

In its 2014 definitions of Core-Based Statistical Areas (CBSAs), the Office of Management and Budget (OMB) identified 166 Combined Statistical Areas (CSAs) around the country, including one titled the Miami-Fort Lauderdale-Port St. Lucie CSA, which includes the Miami-Fort Lauderdale-West Palm Beach, Port St. Lucie and Sebastian-Vero Beach MSAs, as well as the Okeechobee Micropolitan Statistical Area (seven counties total). This is significant because, as noted by OMB, CSAs "can serve as an important geographic tool for the Federal statistical data community. They can be characterized as representing larger regions that reflect broader social and economic interactions, such as wholesaling, commodity distribution, and weekend recreation activities, and are likely to be of considerable interest to regional authorities and the private sector. If specified criteria are met, adjacent Metropolitan and Micropolitan Statistical Areas, in various combinations, may become the components of a Combined Statistical Area. It should be noted that Combined Statistical Areas complement, but do not supersede Metropolitan and Micropolitan Statistical Areas, which retain their separate component identities." This region, with a 2014 population of 6,558,143, is the 10th largest CSA in the country - it is a little smaller than the area encompassed by Seven50 because it excludes Monroe County but includes Okeechobee County.

Southeast Florida (South Florida and Treasure Coast Regions) Components of Population Change 2010-14

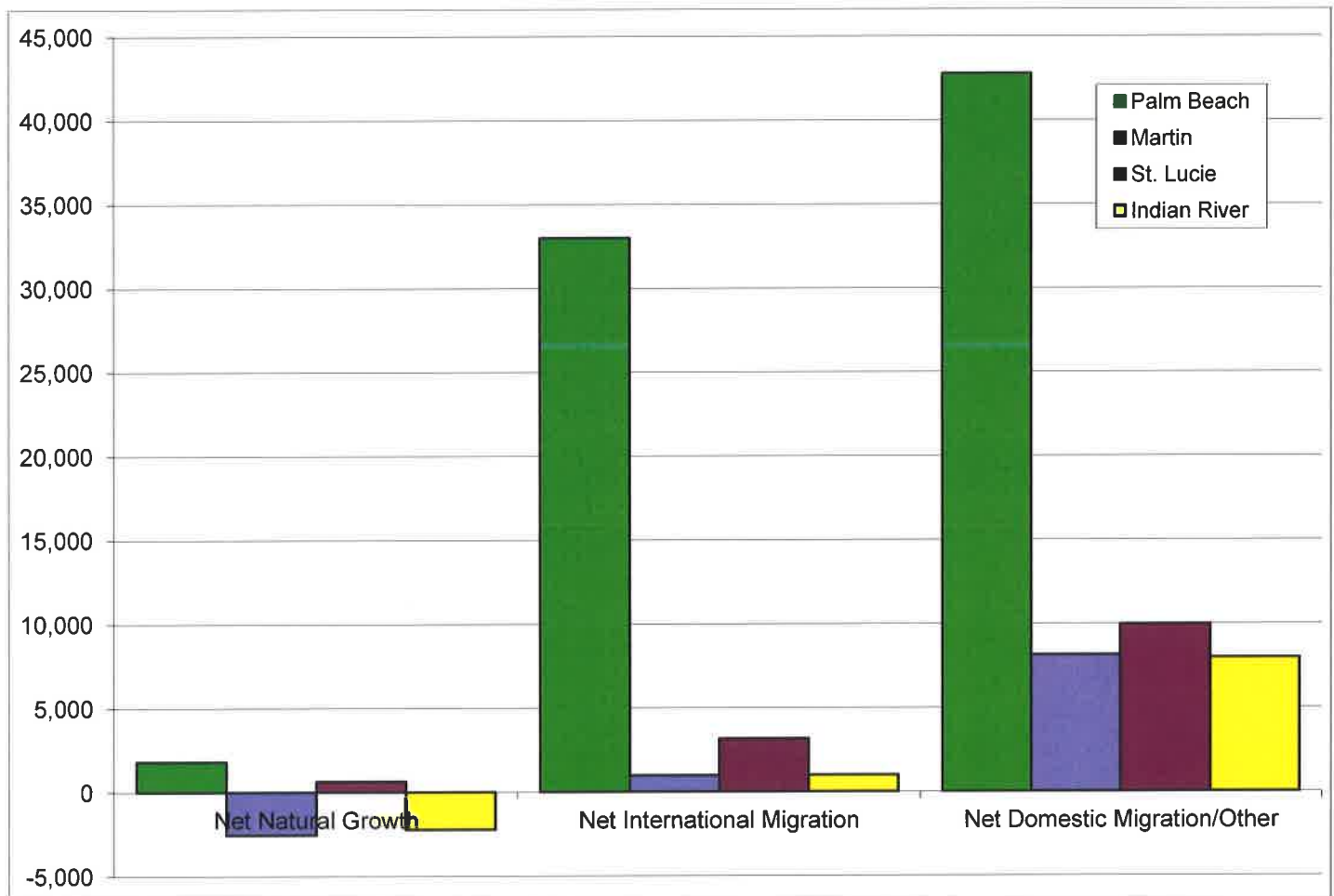
Components of Growth	Monroe	Miami-Dade	Broward	Palm Beach	Martin	St. Lucie	Indian River	Region	Florida	Region/FL
Residents (April 1, 2010)	73,090	2,498,017	1,748,148	1,320,134	146,850	277,257	138,028	6,201,524	18,804,623	32.98%
(+) Births	3,077	131,349	90,351	59,251	4,965	12,690	5,362	307,045	908,600	33.79%
(-) Deaths	-2,777	-80,077	-62,161	-57,431	-7,524	-12,048	-7,600	-229,618	-760,861	30.18%
(+) Net International Migration	1,786	161,507	64,279	32,991	970	3,163	1,002	265,698	467,201	56.87%
(+) Net Domestic Migration	1,967	-49,037	28,565	40,913	7,933	9,026	7,310	46,677	449,934	10.37%
(+) Residual	-7	1,115	53	1,852	198	940	653	4,804	23,800	20.18%
Residents (July 1, 2014)	77,136	2,662,874	1,869,235	1,397,710	153,392	291,028	144,755	6,596,130	19,893,297	33.16%
Absolute Change (4/1/10-7/1/14)	4,046	164,857	121,087	77,576	6,542	13,771	6,727	394,606	1,088,674	36.25%
% Change (4/1/10-7/1/14)	5.54%	6.60%	6.93%	5.88%	4.45%	4.97%	4.87%	6.36%	5.79%	109.91%

Net Natural Growth	300	51,272	28,190	1,820	-2,559	642	-2,238	77,427	147,739	52.41%
Net International Migration	1,786	161,507	64,279	32,991	970	3,163	1,002	265,698	467,201	56.87%
Net Domestic Migration/Other	1,960	-47,922	28,618	42,765	8,131	9,966	7,963	51,481	473,734	10.87%



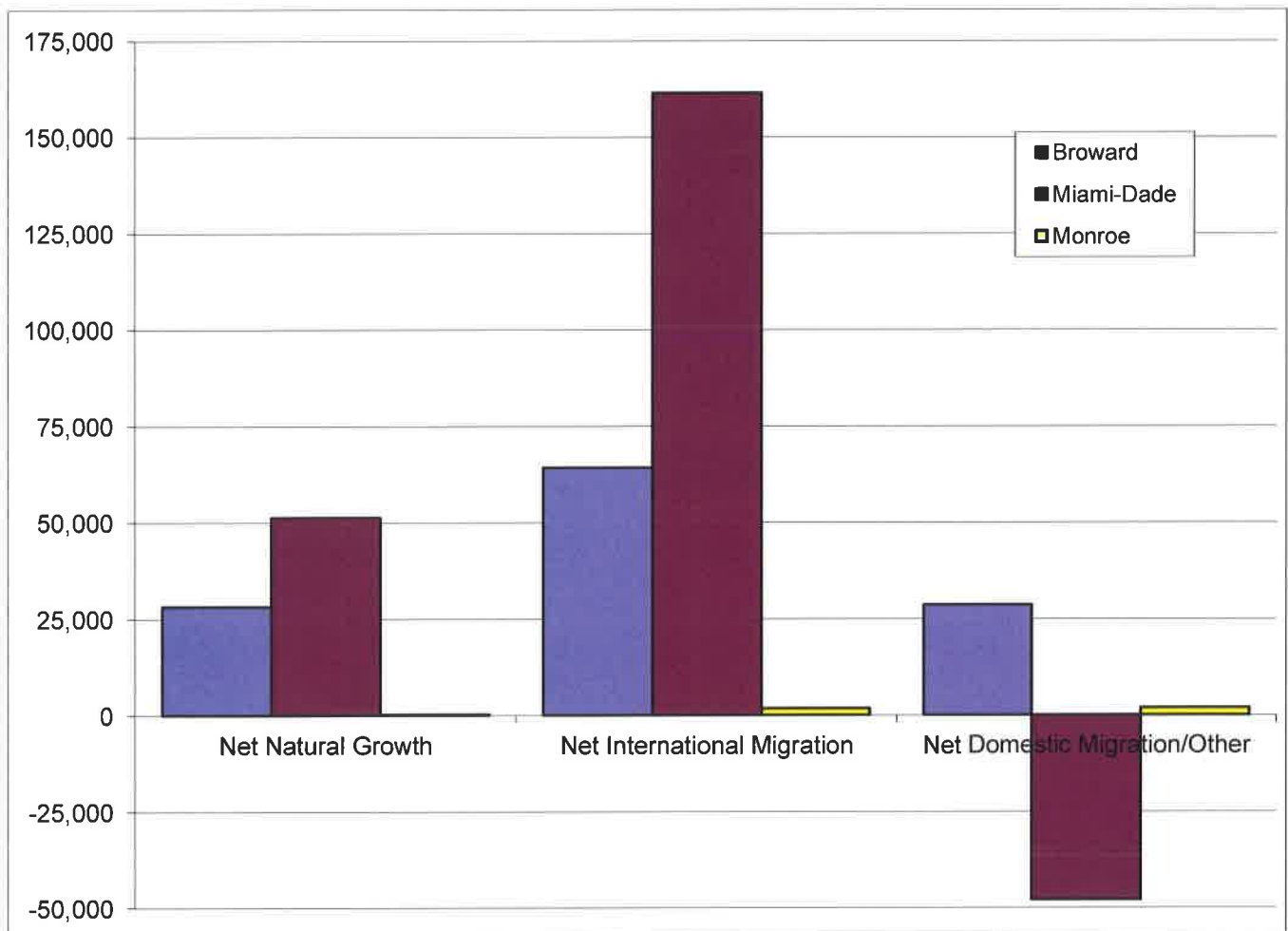
**Treasure Coast and Florida
Components of Population Change
2010-14**

Components of Growth	Palm Beach	Martin	St. Lucie	Indian River	TC	Florida	TC/FL
Residents (April 1, 2010)	1,320,134	146,850	277,257	138,028	1,882,269	18,804,623	10.01%
(+) Births	59,251	4,965	12,690	5,362	82,268	908,600	9.05%
(-) Deaths	-57,431	-7,524	-12,048	-7,600	-84,603	-760,861	11.12%
(+) Net International Migration	32,991	970	3,163	1,002	38,126	467,201	8.16%
(+) Net Domestic Migration	40,913	7,933	9,026	7,310	65,182	449,934	14.49%
(+) Residual	1,852	198	940	653	3,643	23,800	15.31%
Residents (July 1, 2013)	1,397,710	153,392	291,028	144,755	1,986,885	19,893,297	9.99%
Absolute Change (4/1/10-7/1/14)	77,576	6,542	13,771	6,727	104,616	1,088,674	9.61%
% Change (4/1/10-7/1/14)	5.88%	4.45%	4.97%	4.87%	5.56%	5.79%	96.00%
Net Natural Growth	1,820	-2,559	642	-2,238	-2,335	147,739	-1.58%
Net International Migration	32,991	970	3,163	1,002	38,126	467,201	8.16%
Net Domestic Migration/Other	42,765	8,131	9,966	7,963	68,825	473,734	14.53%



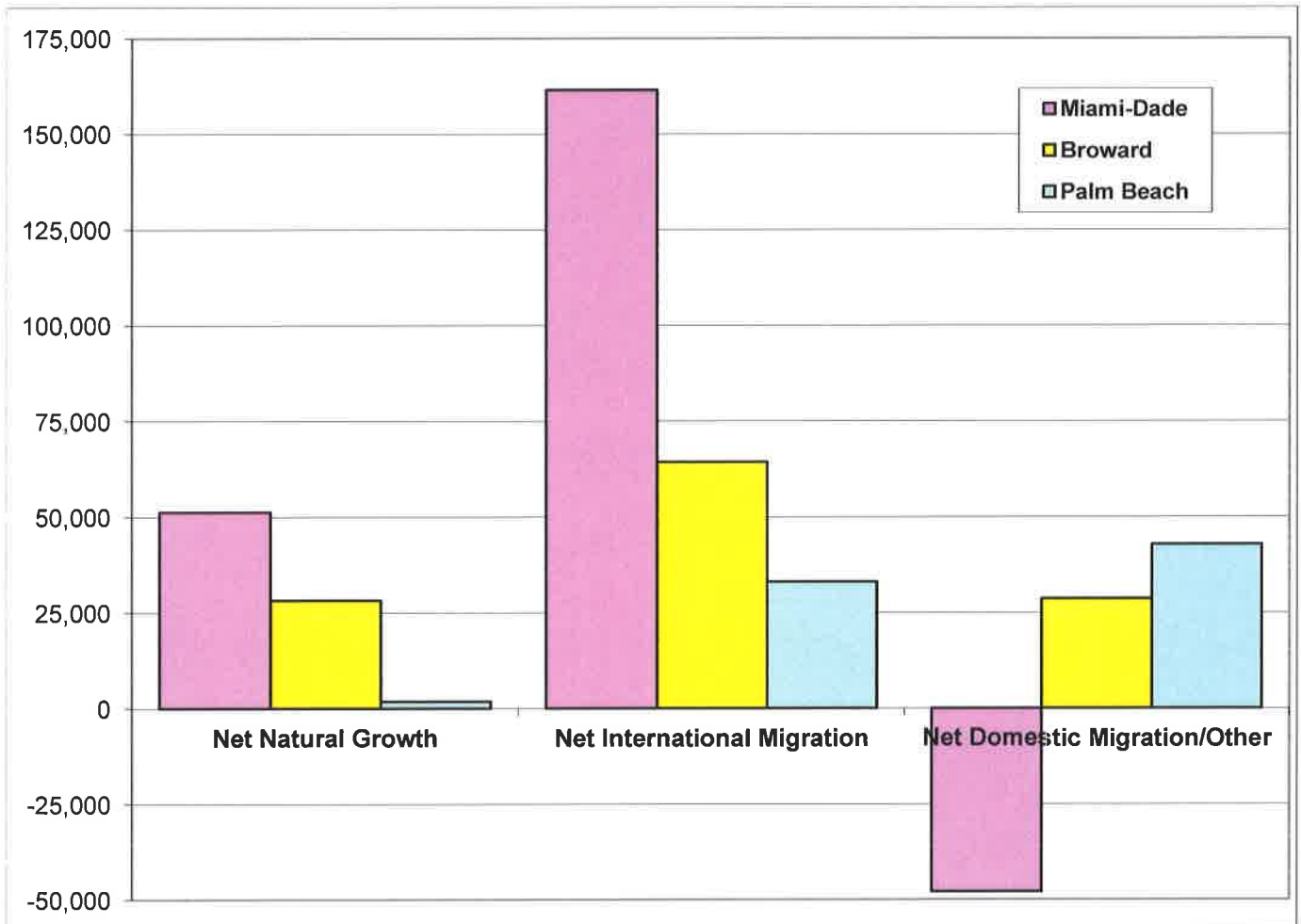
South Florida and Florida Components of Population Growth 2010-14

Components of Growth	Broward	Miami-Dade	Monroe	S Florida	Florida	SF/FL
Residents (April 1, 2010)	1,748,148	2,498,017	73,090	4,319,255	18,804,623	22.97%
(+) Births	90,351	131,349	3,077	224,777	908,600	24.74%
(-) Deaths	-62,161	-80,077	-2,777	-145,015	-760,861	19.06%
(+) Net International Migration	64,279	161,507	1,786	227,572	467,201	48.71%
(+) Net Domestic Migration	28,565	-49,037	1,967	-18,505	449,934	-4.11%
(+) Residual	53	1,115	-7	1,161	23,800	4.88%
Residents (July 1, 2014)	1,869,235	2,662,874	77,136	4,609,245	19,893,297	23.17%
Absolute Change (4/1/10-7/1/14)	121,087	164,857	4,046	289,990	1,088,674	26.64%
% Change (4/1/10-7/1/14)	6.93%	6.60%	5.54%	6.71%	5.79%	115.97%
Net Natural Growth	28,190	51,272	300	79,762	147,739	53.99%
Net International Migration	64,279	161,507	1,786	227,572	467,201	48.71%
Net Domestic Migration/Other	28,618	-47,922	1,960	-17,344	473,734	-3.66%



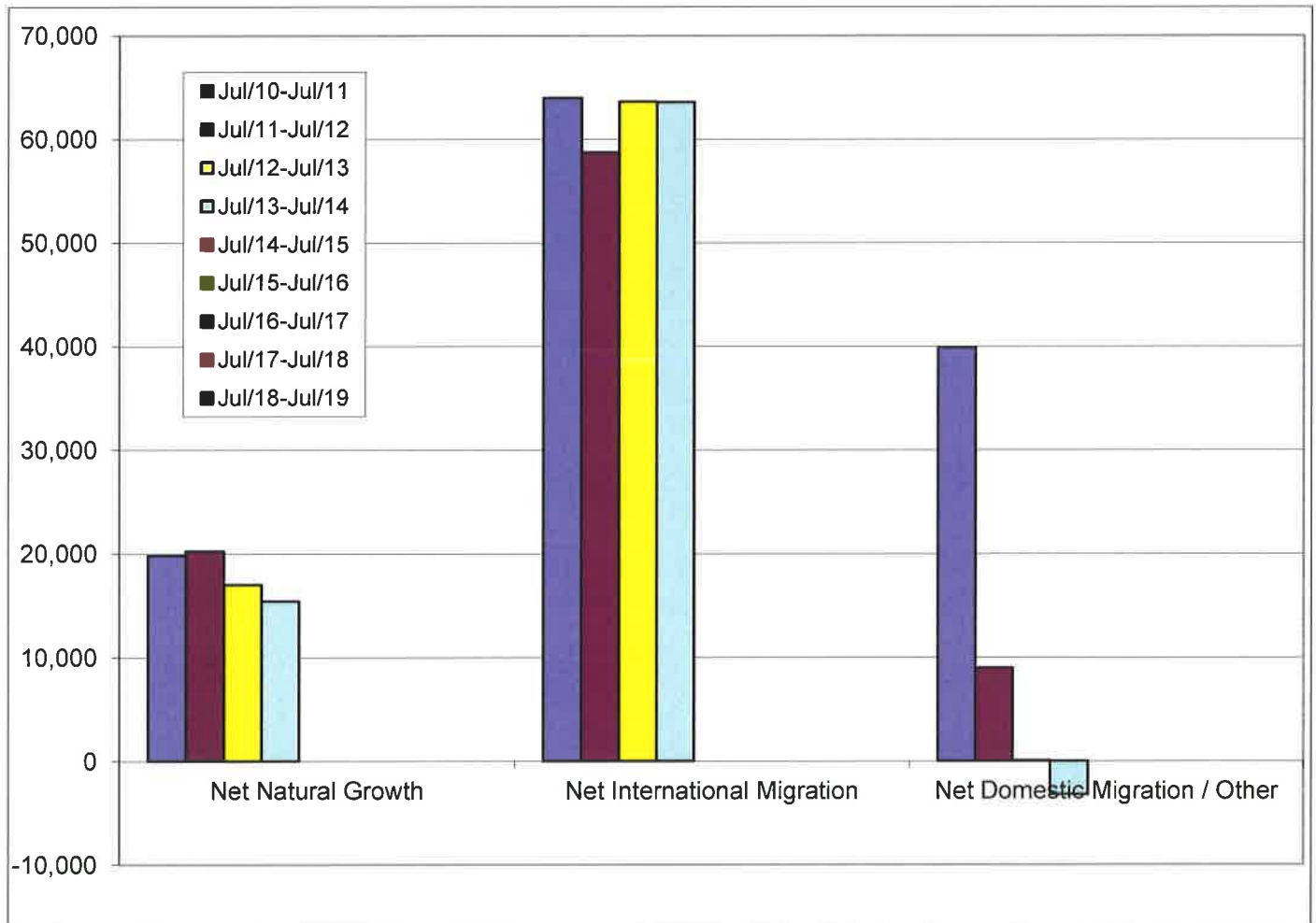
**Miami-Fort Lauderdale-West Palm Beach Metropolitan Statistical Area
Components of Population Change
2010-14**

Components of Growth	Miami-Dade	Broward	Palm Beach	MSA	Florida	MSA/FL
Residents (April 1, 2010)	2,498,017	1,748,148	1,320,134	5,566,299	18,804,623	29.60%
(+) Births	131,349	90,351	59,251	280,951	908,600	30.92%
(-) Deaths	-80,077	-62,161	-57,431	-199,669	-760,861	26.24%
(+) Net International Migration	161,507	64,279	32,991	258,777	467,201	55.39%
(+) Net Domestic Migration	-49,037	28,565	40,913	20,441	449,934	4.54%
(+) Residual	1,115	53	1,852	3,020	23,800	12.69%
Residents (July 1, 2014)	2,662,874	1,869,235	1,397,710	5,929,819	19,893,297	29.81%
Absolute Change (4/1/10-7/1/14)	164,857	121,087	77,576	363,520	1,088,674	33.39%
% Change (4/1/10-7/1/14)	6.60%	6.93%	5.88%	6.53%	5.79%	112.81%
Net Natural Growth	51,272	28,190	1,820	81,282	147,739	55.02%
Net International Migration	161,507	64,279	32,991	258,777	467,201	55.39%
Net Domestic Migration/Other	-47,922	28,618	42,765	23,461	473,734	4.95%



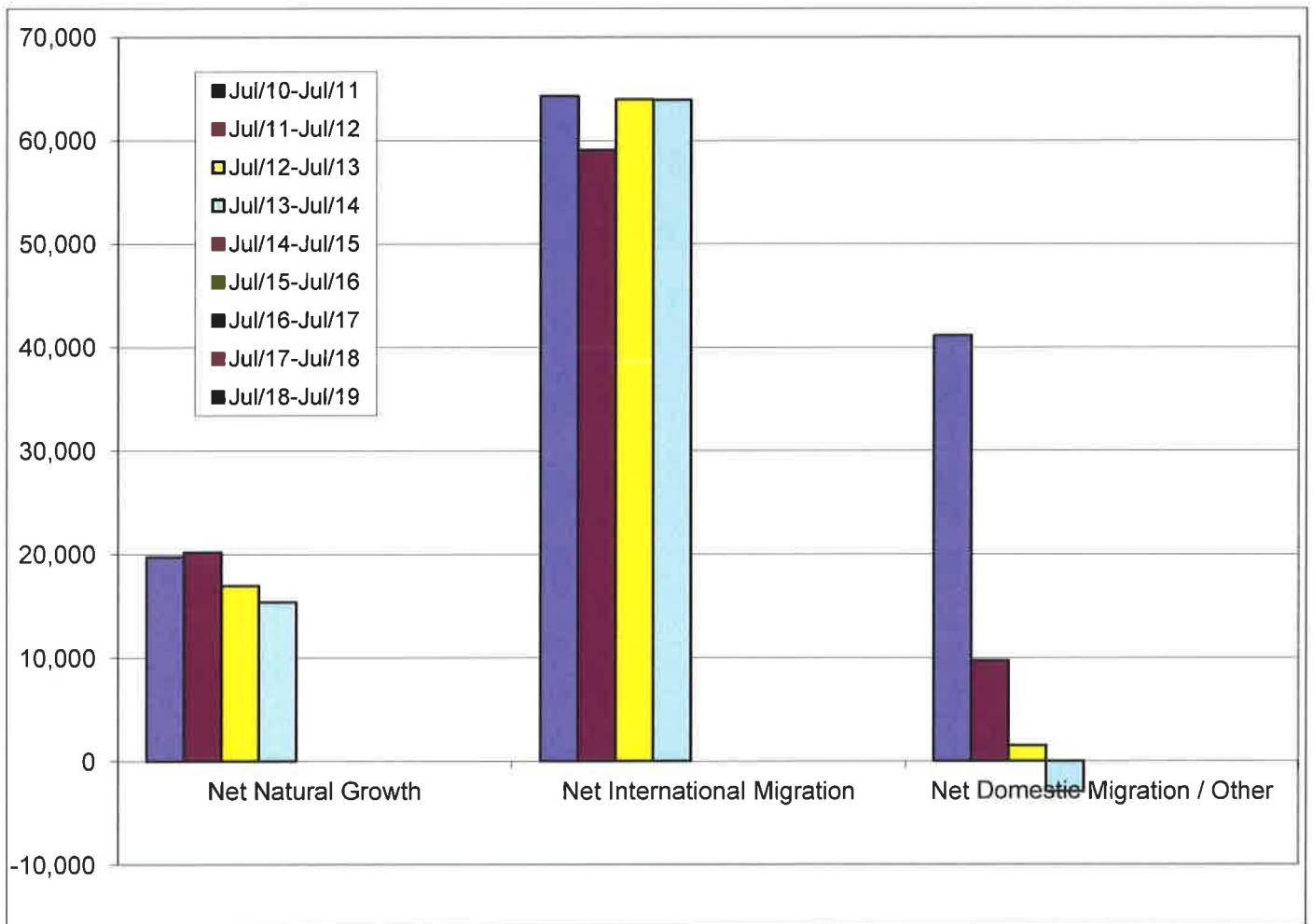
**Miami-Fort Lauderdale-Port St. Lucie Combined Statistical Area
Components of Population Growth
2010-19**

Period Begin	Period End	Beginning of Period Population	(+) Births	(-) Deaths	(+) Net International Migration	(+) Net Domestic Migration	(+) Residual	(=) End of Period Population
01-Apr-10	01-Jul-10	6,168,430	18,122	-12,886	14,287	2,100	-27	6,190,026
01-Jul-10	01-Jul-11	6,190,026	72,257	-52,452	63,980	39,932	-63	6,313,680
01-Jul-11	01-Jul-12	6,313,680	72,296	-52,045	58,729	8,622	362	6,401,644
01-Jul-12	01-Jul-13	6,401,644	71,719	-54,717	63,639	-3,404	3,459	6,482,340
01-Jul-13	01-Jul-14	6,482,340	71,823	-56,395	63,580	-4,462	1,257	6,558,143
01-Jul-14	01-Jul-15	6,558,143	0	0	0	0	0	6,558,143
01-Jul-15	01-Jul-16	0	0	0	0	0	0	0
01-Jul-16	01-Jul-17	0	0	0	0	0	0	0
01-Jul-17	01-Jul-18	0	0	0	0	0	0	0
01-Jul-18	01-Jul-19	0	0	0	0	0	0	0
01-Apr-10	01-Jul-19	6,168,430	306,217	-228,495	264,215	42,788	4,988	6,558,143



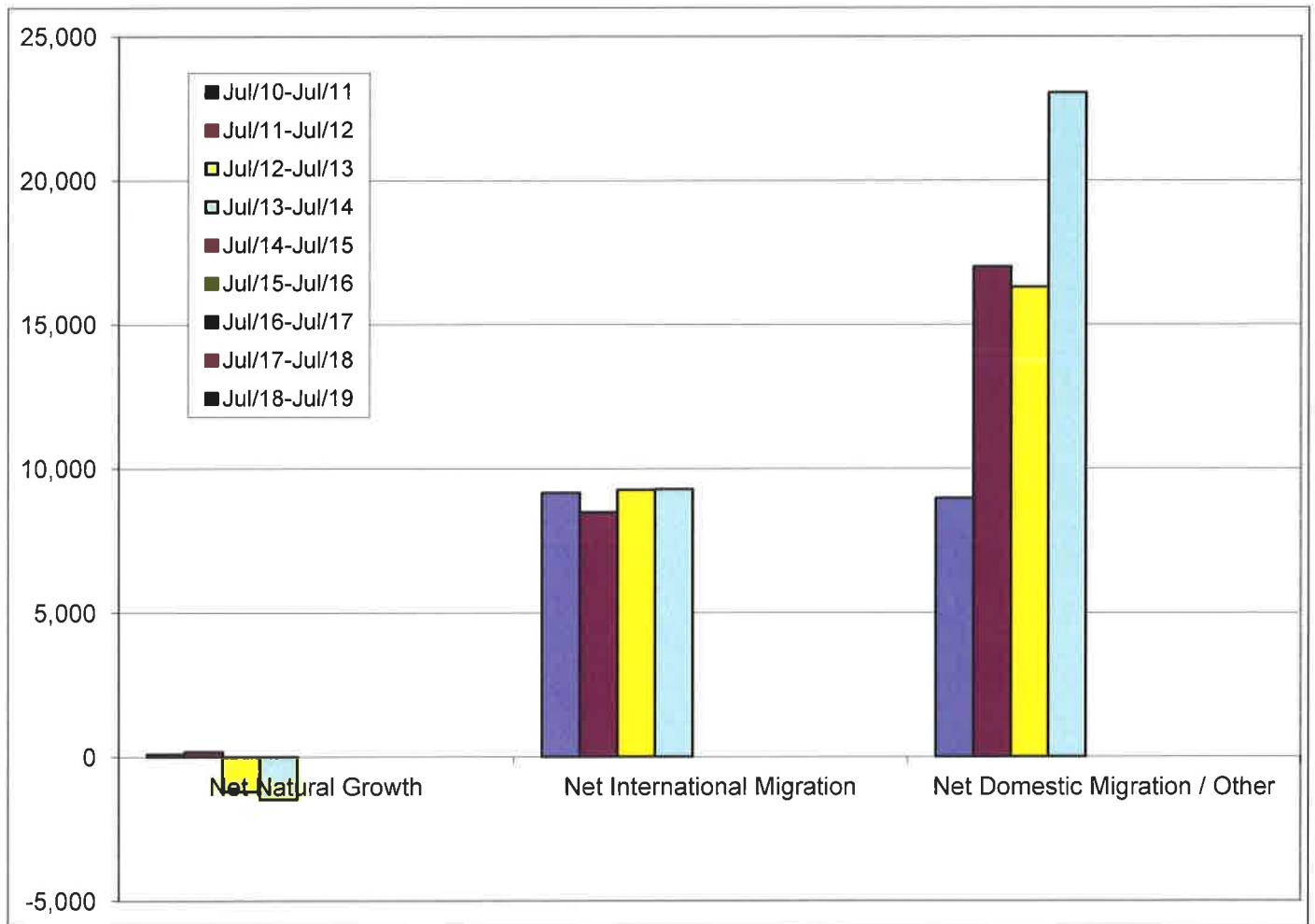
**South Florida and Treasure Coast Regions
Components of Population Growth
2010-19**

Period Begin	Period End	Beginning of Period Population	(+) Births	(-) Deaths	(+) Net International Migration	(+) Net Domestic Migration	(+) Residual	(=) End of Period Population
01-Apr-10	01-Jul-10	6,201,524	18,152	-12,935	14,362	2,142	-32	6,223,213
01-Jul-10	01-Jul-11	6,223,213	72,427	-52,710	64,314	41,416	-270	6,348,390
01-Jul-11	01-Jul-12	6,348,390	72,472	-52,291	59,087	9,336	356	6,437,350
01-Jul-12	01-Jul-13	6,437,350	71,935	-54,977	64,003	-2,019	3,508	6,519,800
01-Jul-13	01-Jul-14	6,519,800	72,059	-56,705	63,932	-4,198	1,242	6,596,130
01-Jul-14	01-Jul-15	6,596,130	0	0	0	0	0	6,596,130
01-Jul-15	01-Jul-16	0	0	0	0	0	0	0
01-Jul-16	01-Jul-17	0	0	0	0	0	0	0
01-Jul-17	01-Jul-18	0	0	0	0	0	0	0
01-Jul-18	01-Jul-19	0	0	0	0	0	0	0
01-Apr-10	01-Jul-19	6,201,524	307,045	-229,618	265,698	46,677	4,804	6,596,130



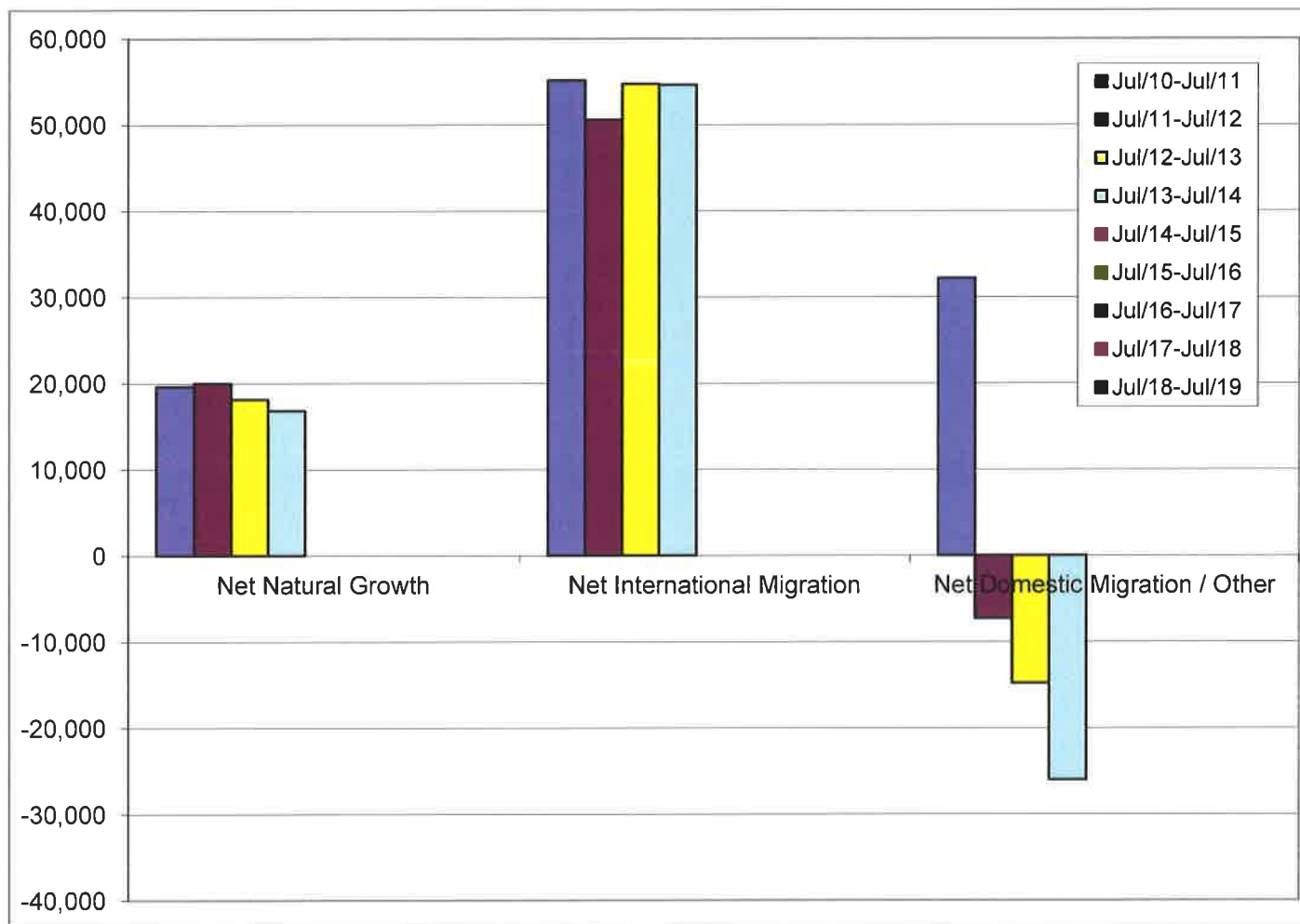
**Treasure Coast Region
Components of Population Growth
2010-19**

Period Begin	Period End	Beginning of Period Population	(+) Births	(-) Deaths	(+) Net International Migration	(+) Net Domestic Migration	(+) Residual	(=) End of Period Population
01-Apr-10	01-Jul-10	1,882,269	4,763	-4,734	1,929	3,470	25	1,887,722
01-Jul-10	01-Jul-11	1,887,722	19,266	-19,169	9,162	9,028	-53	1,905,956
01-Jul-11	01-Jul-12	1,905,956	19,458	-19,276	8,484	17,085	-81	1,931,626
01-Jul-12	01-Jul-13	1,931,626	19,271	-20,458	9,268	15,157	1,141	1,956,005
01-Jul-13	01-Jul-14	1,956,005	19,510	-20,966	9,283	20,442	2,611	1,986,885
01-Jul-14	01-Jul-15	1,986,885	0	0	0	0	0	1,986,885
01-Jul-15	01-Jul-16	0	0	0	0	0	0	0
01-Jul-16	01-Jul-17	0	0	0	0	0	0	0
01-Jul-17	01-Jul-18	0	0	0	0	0	0	0
01-Jul-18	01-Jul-19	0	0	0	0	0	0	0
01-Apr-10	01-Jul-19	1,882,269	82,268	-84,603	38,126	65,182	3,643	1,986,885



**South Florida
Components of Population Growth
2010-19**

Period Begin	Period End	Beginning of Period Population	(+) Births	(-) Deaths	(+) Net International Migration	(+) Net Domestic Migration	(+) Residual	(=) End of Period Population
01-Apr-10	01-Jul-10	4,319,255	13,389	-8,201	12,433	-1,328	-57	4,335,491
01-Jul-10	01-Jul-11	4,335,491	53,161	-33,541	55,152	32,388	-217	4,442,434
01-Jul-11	01-Jul-12	4,442,434	53,014	-33,015	50,603	-7,749	437	4,505,724
01-Jul-12	01-Jul-13	4,505,724	52,664	-34,519	54,735	-17,176	2,367	4,563,795
01-Jul-13	01-Jul-14	4,563,795	52,549	-35,739	54,649	-24,640	-1,369	4,609,245
01-Jul-14	01-Jul-15	4,609,245	0	0	0	0	0	4,609,245
01-Jul-15	01-Jul-16	0	0	0	0	0	0	0
01-Jul-16	01-Jul-17	0	0	0	0	0	0	0
01-Jul-17	01-Jul-18	0	0	0	0	0	0	0
01-Jul-18	01-Jul-19	0	0	0	0	0	0	0
01-Apr-10	01-Jul-19	4,319,255	224,777	-145,015	227,572	-18,505	1,161	4,609,245



**SOUTHEAST FLORIDA
RESIDENT POPULATION ESTIMATES AND PROJECTIONS
1920 - 2040**

YEARS	MONROE	MIAMI-DADE	BROWARD	PALM BEACH	MARTIN	ST LUCIE	INDIAN RIVER	SE FLORIDA	FLORIDA	US	REGION/FL
RESIDENT POPULATION											
1920	19,550	42,753	5,135	18,654	N.A.	7,886	N.A.	93,978	968,470	106,021,537	9.70%
1930	13,624	142,955	20,094	51,781	5,111	7,057	6,724	247,346	1,468,211	123,202,624	16.85%
1940	14,078	267,739	39,794	79,989	6,295	11,871	8,957	428,723	1,897,414	132,164,569	22.60%
1950	29,957	495,084	83,933	114,688	7,807	20,180	11,872	763,521	2,771,305	151,325,798	27.55%
1960	47,921	935,047	333,946	228,106	16,932	39,294	25,309	1,626,555	4,951,560	179,323,175	32.85%
1970	52,586	1,267,792	620,100	348,753	28,035	50,836	35,992	2,404,094	6,789,447	203,302,031	35.41%
1980	63,188	1,625,509	1,018,257	576,758	64,014	87,182	59,896	3,494,804	9,746,961	226,542,199	35.86%
1990	78,024	1,937,194	1,255,531	863,503	100,900	150,171	90,208	4,475,531	12,938,071	248,718,302	34.59%
2000	79,589	2,253,779	1,623,018	1,131,191	126,731	192,695	112,947	5,519,950	15,982,824	281,424,603	34.54%
2010	73,090	2,496,435	1,748,066	1,320,134	146,318	277,789	138,028	6,199,860	18,801,310	308,745,538	32.98%
2015	74,100	2,643,800	1,818,700	1,377,300	149,800	286,200	143,200	6,493,100	19,789,600	321,369,000	32.81%
2020	74,400	2,796,800	1,891,300	1,463,900	157,300	323,200	154,500	6,861,400	21,236,700	334,503,000	32.31%
2025	74,700	2,944,400	1,953,100	1,543,200	164,300	359,800	165,300	7,204,800	22,600,300	347,335,000	31.88%
2030	74,900	3,090,200	2,009,000	1,615,100	170,200	394,600	175,700	7,529,700	23,872,600	359,402,000	31.54%
2035	75,200	3,220,700	2,059,300	1,678,700	175,400	426,100	185,600	7,821,000	25,027,300	370,338,000	31.25%
2040	75,500	3,343,700	2,105,600	1,736,500	179,800	455,400	194,600	8,091,100	26,081,400	380,219,000	31.02%
ABSOLUTE GROWTH											
1920/30	-5,926	100,202	14,959	33,127	N.A.	-829	N.A.	141,533	499,741	17,181,087	28.32%
1930/40	454	124,784	19,700	28,200	1,184	4,814	2,233	181,377	429,203	8,961,945	42.26%
1940/50	15,879	227,345	44,139	34,699	1,512	8,309	2,915	334,798	873,891	19,161,229	38.31%
1950/60	17,964	439,963	250,013	113,418	9,125	19,114	13,437	863,034	2,180,255	27,997,377	39.58%
1960/70	4,665	332,745	286,154	120,647	11,103	11,542	10,683	777,539	1,837,887	23,978,856	42.31%
1970/80	10,602	357,717	398,157	228,005	35,979	36,346	23,904	1,090,710	2,957,514	23,240,168	36.88%
1980/90	14,836	311,685	237,274	286,745	36,886	62,989	30,312	980,727	3,191,110	22,176,103	30.73%
1990/00	1,565	316,585	367,487	267,688	25,831	42,524	22,739	1,044,419	3,044,753	32,706,301	34.30%
2000/10	-6,499	242,656	125,048	188,943	19,587	85,094	25,081	679,910	2,818,486	27,320,935	24.12%
2010/20	1,310	300,365	143,234	143,766	10,982	45,411	16,472	661,540	2,435,390	25,757,462	27.16%
2020/30	500	293,400	117,700	151,200	12,900	71,400	21,200	668,300	2,635,900	24,899,000	25.35%
2030/40	600	253,500	96,600	121,400	9,600	60,800	18,900	561,400	2,208,800	20,817,000	25.42%
AVERAGE ANNUAL RATES OF GROWTH (%)											
1920/30	-3.55	12.83	14.62	10.75	N.A.	-1.10	N.A.	10.16	4.25	1.51	239.16%
1930/40	0.33	6.48	7.07	4.44	2.11	5.34	2.91	5.65	2.60	0.70	217.67%
1940/50	7.84	6.34	7.75	3.67	2.18	5.45	2.86	5.94	3.86	1.36	153.88%
1950/60	4.81	6.57	14.81	7.12	8.05	6.89	7.86	7.86	5.98	1.71	131.47%
1960/70	0.93	3.09	6.38	4.34	5.17	2.61	3.58	3.98	3.21	1.26	124.24%
1970/80	1.85	2.52	5.08	5.16	8.61	5.54	5.23	3.81	3.68	1.09	103.53%
1980/90	2.13	1.77	2.12	4.12	4.66	5.59	4.18	2.50	2.87	0.94	87.18%
1990/00	0.20	1.53	2.60	2.74	2.31	2.52	2.27	2.12	2.14	1.24	99.24%
2000/10	-0.85	1.03	0.74	1.56	1.45	3.73	2.03	1.17	1.64	0.93	71.35%
2010/20	0.18	1.14	0.79	1.04	0.73	1.53	1.13	1.02	1.23	0.80	83.15%
2020/30	0.07	1.00	0.61	0.99	0.79	2.02	1.29	0.93	1.18	0.72	79.34%
2030/40	0.08	0.79	0.47	0.73	0.55	1.44	1.03	0.72	0.89	0.56	81.19%

Sources: 1920-2010: US Bureau of the Census, *Census of Population* (decennial)

2015-2040 (US): US Bureau of the Census, *2014 National Population Projections* (December, 2014)

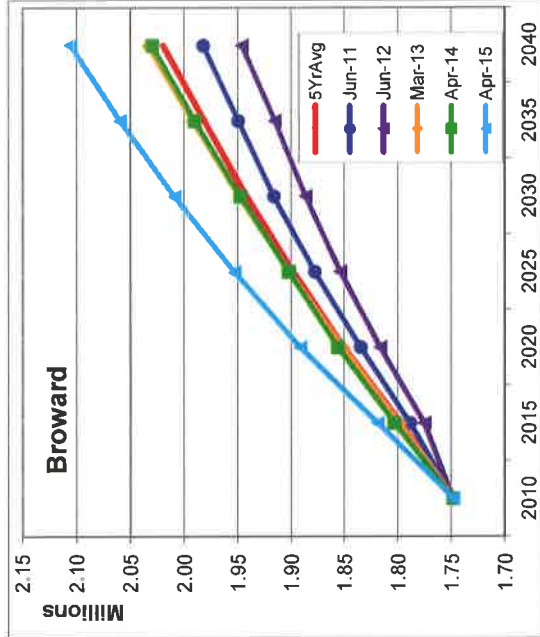
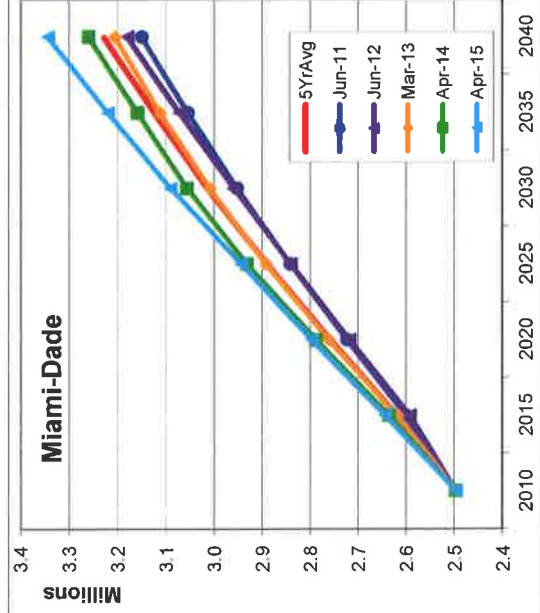
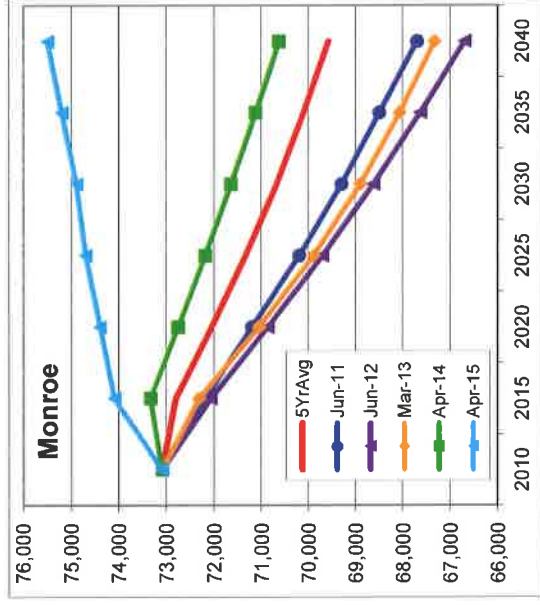
2015-2040 (FL): University of Florida, Bureau of Economic and Business Research, *Projections of Florida Population by County, 2012-2040* (April, 2015).

**SOUTHEAST FLORIDA
RESIDENT POPULATION ESTIMATES AND PROJECTIONS
2010 - 2040**

Years	Monroe	Miami-Dade	Broward	Palm Beach	Martin	St. Lucie	Indian River	SE Florida	Florida	Regions/FL
Jun-11										
2010	73,090	2,496,435	1,748,066	1,320,134	146,318	277,789	138,028	6,199,860	18,801,310	32.98%
2015	72,200	2,600,900	1,788,200	1,394,300	154,100	315,100	148,900	6,473,700	19,974,400	32.41%
2020	71,200	2,722,900	1,834,500	1,482,900	163,300	357,400	161,300	6,793,500	21,326,800	31.85%
2025	70,200	2,841,400	1,877,700	1,568,500	172,200	399,400	173,500	7,102,900	22,641,300	31.37%
2030	69,300	2,952,800	1,916,200	1,648,000	180,500	439,000	185,100	7,390,900	23,877,900	30.95%
2035	68,500	3,055,100	1,949,700	1,720,000	187,900	475,900	196,000	7,653,100	25,017,100	30.59%
2040	67,700	3,150,200	1,982,500	1,786,000	194,700	510,500	206,400	7,898,000	26,081,800	30.28%
Jun-12										
2010	73,090	2,496,435	1,748,066	1,320,134	146,318	277,789	138,028	6,199,860	18,801,310	32.98%
2015	72,074	2,591,790	1,775,264	1,372,682	151,590	304,551	145,613	6,413,564	19,664,972	32.61%
2020	70,863	2,717,631	1,816,224	1,461,234	160,897	346,572	158,501	6,731,922	21,021,643	32.02%
2025	69,702	2,840,533	1,853,626	1,546,129	169,792	387,715	170,931	7,038,428	22,329,543	31.52%
2030	68,624	2,959,348	1,886,564	1,625,651	178,093	426,786	182,584	7,327,650	23,567,010	31.09%
2035	67,633	3,071,498	1,915,231	1,699,536	185,773	463,635	193,592	7,596,898	24,730,724	30.72%
2040	66,700	3,179,748	1,946,355	1,769,470	193,017	498,889	204,134	7,858,313	25,846,980	30.40%
Mar-13										
2010	73,090	2,496,435	1,748,066	1,320,134	146,318	277,789	138,028	6,199,860	18,801,310	32.98%
2015	72,328	2,619,045	1,797,981	1,377,239	151,983	299,364	145,441	6,463,381	19,750,577	32.73%
2020	71,050	2,761,156	1,850,809	1,465,309	160,964	338,912	158,012	6,806,212	21,141,318	32.19%
2025	69,894	2,892,389	1,901,480	1,545,998	169,130	375,969	169,643	7,124,503	22,434,012	31.76%
2030	68,903	3,009,309	1,948,726	1,616,867	176,238	410,229	180,240	7,410,512	23,601,075	31.40%
2035	68,070	3,111,619	1,992,208	1,678,101	182,322	441,451	189,342	7,663,113	24,639,488	31.10%
2040	67,336	3,204,915	2,033,471	1,733,331	187,765	468,418	197,663	7,892,899	25,583,157	30.85%
Apr-14										
2010	73,090	2,496,435	1,748,066	1,320,134	146,318	277,789	138,028	6,199,860	18,801,310	32.98%
2015	73,340	2,635,261	1,802,981	1,374,312	151,388	293,805	143,755	6,474,842	19,747,233	32.75%
2020	72,756	2,788,075	1,855,922	1,459,489	159,373	330,466	155,582	6,821,663	21,149,697	32.25%
2025	72,193	2,932,378	1,902,192	1,536,580	166,590	364,736	166,614	7,141,283	22,442,973	31.82%
2030	71,650	3,056,689	1,947,695	1,605,718	173,228	396,631	176,829	7,428,440	23,608,972	31.46%
2035	71,124	3,159,356	1,990,308	1,660,706	178,599	426,602	185,780	7,672,475	24,653,968	31.12%
2040	70,628	3,260,274	2,029,947	1,715,293	183,510	454,223	193,699	7,907,574	25,603,577	30.88%
Apr-15										
2010	73,090	2,496,435	1,748,066	1,320,134	146,318	277,789	138,028	6,199,860	18,801,310	32.98%
2015	74,100	2,643,800	1,818,700	1,377,300	149,800	286,200	143,200	6,493,100	19,789,600	32.81%
2020	74,400	2,796,800	1,891,300	1,463,900	157,300	323,200	154,500	6,861,400	21,236,700	32.31%
2025	74,700	2,944,400	1,953,100	1,543,200	164,300	359,800	165,300	7,204,800	22,600,300	31.88%
2030	74,900	3,090,200	2,009,000	1,615,100	170,200	394,600	175,700	7,529,700	23,872,600	31.54%
2035	75,200	3,220,700	2,059,300	1,678,700	175,400	426,100	185,600	7,821,000	25,027,300	31.25%
2040	75,500	3,343,700	2,105,600	1,736,500	179,800	455,400	194,600	8,091,100	26,081,400	31.02%

**SOUTHEAST FLORIDA
RESIDENT POPULATION ESTIMATES AND PROJECTIONS
2010 - 2040**

Years	Monroe	Miami-Dade	Broward	Palm Beach	Martin	St. Lucie	Indian River	Regions	Florida	Regions/FL
5-Year Average of BEBR Projections (Jun-11 to Apr-15)										
2010	73,090	2,496,435	1,748,066	1,320,134	146,318	277,789	138,028	6,199,860	18,801,310	32.98%
2015	72,808	2,618,159	1,796,625	1,379,167	151,772	299,804	145,382	6,463,717	19,785,356	32.67%
2020	72,054	2,757,312	1,849,751	1,466,566	160,367	339,310	157,579	6,802,939	21,175,232	32.13%
2025	71,338	2,890,220	1,897,620	1,548,081	168,402	377,524	169,198	7,122,383	22,489,626	31.67%
2030	70,675	3,013,669	1,941,637	1,622,267	175,652	413,449	180,091	7,417,440	23,705,511	31.29%
2035	70,105	3,123,655	1,981,349	1,687,409	181,999	446,738	190,063	7,681,317	24,813,716	30.96%
2040	69,573	3,227,767	2,019,575	1,748,119	187,758	477,486	199,299	7,929,577	25,839,383	30.69%
Absolute Change										
2010-20	-1,036	260,877	101,685	146,432	14,049	61,521	19,551	603,079	2,373,922	25.40%
2020-30	-1,378	296,357	91,886	155,701	15,285	74,139	22,512	614,501	2,530,280	24.29%
2030-40	-1,103	214,098	77,938	125,852	12,107	64,037	19,209	512,137	2,133,871	24.00%
2010-40	-3,517	731,332	271,509	427,985	41,440	199,697	61,271	1,729,717	7,038,073	24.58%
% Change										
2010-20	-1.42%	10.45%	5.82%	11.09%	9.60%	22.15%	14.16%	9.73%	12.63%	77.04%
2020-30	-1.91%	9.30%	4.97%	10.62%	9.53%	21.85%	14.29%	9.03%	11.95%	75.59%
2030-40	-1.56%	7.10%	4.01%	7.76%	6.89%	15.49%	10.67%	6.90%	9.00%	76.70%
2010-40	-4.81%	29.30%	15.53%	32.42%	28.32%	71.89%	44.39%	27.90%	37.43%	74.53%
Average Annual Rates of Growth (%)										
2010-20	-0.14%	1.00%	0.57%	1.06%	0.92%	2.02%	1.33%	0.93%	1.20%	-0.26%
2020-30	-0.19%	0.89%	0.49%	1.01%	0.91%	2.00%	1.34%	0.87%	1.14%	-0.26%
2030-40	-0.16%	0.69%	0.39%	0.75%	0.67%	1.45%	1.02%	0.67%	0.87%	-0.19%
2010-40	-0.16%	0.86%	0.48%	0.94%	0.83%	1.82%	1.23%	0.82%	1.07%	-0.24%



**SOUTHEAST FLORIDA
RESIDENT POPULATION ESTIMATES AND PROJECTIONS
2010 - 2040**

