



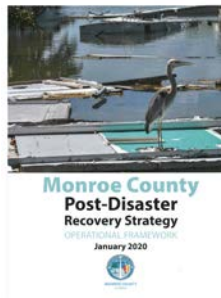
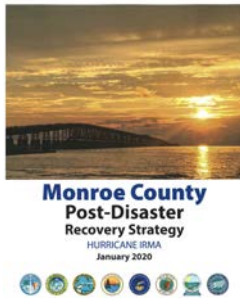
AGENDA ITEM #VI.D

DATE: MAY 29, 2020
TO: COUNCIL MEMBERS
FROM: STAFF
SUBJECT: COUNCIL HIGHLIGHTS

Attached are brief descriptions of activities in which the Council has been involved since January 2020.
Information only.

COUNCIL HIGHLIGHTS MAY 2020

Monroe County Post-Disaster Recovery Strategy and Operational Framework



Council staff, working in partnership with Monroe County and Ovid Solutions, completed the development of the Monroe County Post Disaster Recovery Strategy and Operational Framework in February. Funded with a grant from the U.S. Economic Development Administration, the Post Disaster Recovery Strategy provides a comprehensive strategy to guide major long-term recovery projects and priorities for the county and its municipal jurisdictions. The strategy addresses five priority areas for the recovery following Hurricane Irma:

- 1) Community Planning and Capacity Building;
 - 2) Economic Recovery – Business and Tourism;
 - 3) Housing;
 - 4) Infrastructure Systems; and
 - 5) Finance and Administration.
- The Operational Framework is intended to help Monroe County navigate resources for long-term recovery, after FEMA Individual Assistance and Public Assistance has been exhausted.

Transit-Oriented Development (TOD) Work Program



Council staff is conducting tasks in a TOD Work Program to further the goal of encouraging TOD around existing Tri-Rail stations. The TOD Work Program provides the task list to be completed for the five-year professional services agreement between the SFRPC and the SFRTA (2015-2020).

The “TOD Readiness Report for Select Station Areas” (Report), prepared in coordination with SFRTA and the Treasure Coast Regional Planning Council was completed in March 2020. The findings of the Report were presented to the department heads of the SFRTA. The Report found that there were three stations along the corridor with immediate potential for TOD joint development on publicly owned land: Boca Raton, Boynton, and Cypress Creek Stations. Three stations were found have longer term opportunities: Hialeah Market, Sheridan Street, and Delray Beach Stations.

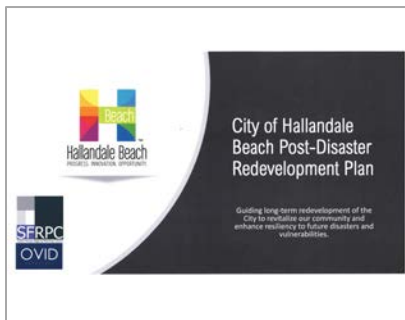
Next Steps:

- Conduct coordination with local municipalities and the Florida Department of Transportation to ready sites for potential joint development and maximizing the benefits to the SFRTA; and
- Review and draft potential Request for Proposal (RFP) process for joint developments on publicly owned lands.

SFRTA Professional Services Agreement Renewal (2020-2025)

Council is in the process of executing a new five-year professional services agreement between the SFRPC and the SFRTA for the period of 2020 – 2025 at the same level of support as the previous agreement. The initial tasks to be funded by the agreement have been identified as part of the mutually agreed upon TOD Work Program.

Hallandale Beach Post Disaster Redevelopment Plan



Council staff is developing a Post-Disaster Redevelopment Plan (PDRP) for the City of Hallandale Beach, following guidance documents published by the Florida Department of Economic Opportunity (DEO) and the Florida Division of Emergency Management. Council staff convened a group of stakeholders to provide feedback on the development of the Plan. Council staff has completed a draft version of the plan and is currently working on the final plan. The final PDRP will be presented to the City of Hallandale Beach in August 2020.

South Dade Economic Development Strategy



Council staff has been working with Miami-Dade Department of Regulatory and Economic Resources (RER), Lambert Advisory, and the Economic Development Council of South Miami-Dade (EDC) to develop a strategic plan for South Miami-Dade. Two community meetings were held prior to the pandemic related lockdowns where feedback from the community was encouraged. The final community meeting is scheduled for June 9, 2020.

The project team solicited information from key industries in the region. These included stakeholders from the retail, healthcare, and agricultural industries in South Miami-Dade. Their insights, along with community feedback, will strengthen the finalized strategic plan. The development of this Plan is expected to be completed Summer 2020.

Miami-Dade TPO County-wide Public-Accessed Parking Assessment

Miami-Dade TPO Mode Split Study



Council staff is finalizing a parking assessment for the Miami-Dade TPO. Using readily available sources, the assessment identified:

- The location of all paid publicly accessible parking facilities (on and off-street) in Miami-Dade County;
- Which, of the approximately 5,400 Micro-Analysis Zones in Miami-Dade County (which are used in transportation modeling), contain paid publicly accessible parking facilities; and
- The average cost of parking in each Micro-Analysis Zone

The average cost of parking in each Micro-Analysis Zone is to be used by TPO as a variable in the Southeast Regional Planning Model (SERPM) in relation to the SMART transportation improvement plan.

Study Completion: June 30, 2020

Community Economic Development Strategy



Council staff is developing a timeline to execute the 2022-2027 Comprehensive Economic Development Strategy update. This includes researching the required components, reviewing the suggested methodology by EDA, and convening of regional stakeholders serving on the CEDS committee to guide development of the Strategy.

Revolving Loan Fund



Council staff used census data and the definitions of essential businesses outlined by executive orders to identify the number of small essential businesses in the 7 counties of SFRPC and TCRPC. This data was compiled to highlight the mass and concentration of small businesses in the region relative to the state. The purpose of highlighting this information is to support the proposal to recapitalize the RLF.