



**Volume 1-11**  
**Technical Data Report**  
**South Florida Region**

**Appendix IVC**  
**Critical Facilities Vulnerability Analysis**  
**Monroe County**



This page intentionally left blank.

## Table of Contents

A.	Introduction.....	IVC-1
B.	County Economic Profile .....	IVC-1
C.	County Vulnerable Population Profile .....	IVC-6
D.	Critical Facility Vulnerability Analysis .....	IVC-8

## List of Tables

<u>Table</u>	<u>Title</u>	<u>Page</u>
IVC-1	Health Care Vulnerability Assessment.....	IVC-9
IVC-2	Other Critical Facilities Vulnerability Assessment .....	IVC-12

## List of Maps

<u>Map</u>	<u>Title</u>	<u>Page</u>
IVC-1	Traffic Evacuation Zones (TEZs) .....	IVC-31
IVC-2	Hurricane Evacuation Zones .....	IVC-32
IVC-3	Floodplain Map .....	IVC-33
IVC-4	Wildland-Urban Interface .....	IVC-34
IVC-5	Mobile Home Parks/ RVs/ Migrant Housing .....	IVC-35
IVC-6	Health Care Facilities.....	IVC-36
IVC-7	Schools and Universities.....	IVC-37
IVC-8	Public Buildings, Emergency Operation Centers, Military Resources, PODs.....	IVC-38
IVC-9	Communications Resources .....	IVC-39
IVC-10	Critical Infrastructure (Water, Waste Water Landfills, etc) .....	IVC-40
IVC-11	Public Shelters 2010.....	IVC-44
IVC-12	Evacuation Routes Vulnerable to Freshwater Flooding.....	IVC-42

This page intentionally left blank.

## A. Introduction

This appendix provides a County Economic Profile, a Vulnerability Profile and a more detailed vulnerability analysis of critical facilities and corresponding maps.

## B. County Economic Profile

This section of the report, and the data contained herein, is provided to capture a profile of the county including geographic and economic characteristics not previously discussed in Chapter I. In addition, many of the critical infrastructure partners including private sector and public utilities identified.

### GEOGRAPHY

**County Website :** [Monroe County](#)  
**Nearest MSA:** Naples-Marco Island  
 Miami-Fort Lauderdale  
**Time Zone:** Eastern  
**Local Area Code(s):** 305, 941  
**Largest Cities:** 1 Key West  
 2 Marathon  
 3 Islamorada



**Miles\* To:**

Tallahassee	.....	435
Orlando	.....	272
Tampa	.....	238
Jacksonville	.....	396
Miami	.....	129
Atlanta	.....	654
Chicago	.....	1240
Dallas	.....	1074
New York	.....	1201

\*Miles are calculated from county seat.

### POPULATION

	Monroe	Florida
<b>1980:</b>	63,188	9,746,961
<b>1990:</b>	78,024	12,938,071
<b>2009:</b>	73,165	18,537,969
<b>2015(p):</b>	77,600	19,881,200
<b>2030(p):</b>	75,500	23,821,300

(p) Denotes Projected Population

### CLIMATE

Average Temperature	High	Low
January:	75	62
July:	90	78

<b>Florida Mean Annual Precipitation</b> .....	53
<b>Average Annual Rain Days</b> .....	109

### PER CAPITA PERSONAL INCOME

	Monroe	Florida
<b>2006</b>	\$57,857	\$38,161
<b>2007</b>	\$61,446	\$39,036
<b>2008</b>	\$61,825	\$39,064

### MIGRATION

(2008)

<b>In-Migration</b>	5,264
<b>Out-Migration</b>	5,741
<b>Net-Migration</b>	-477

\*Estimates based on IRS Statistics of Income data

**LABOR FORCE**

(2009)

Labor Force	45,077
Labor Force % of County Population	61.6
Number in County Unemployed	3,150
Unemployment Rate	7.0%

Monthly labor force data are available from the [Florida Agency for Workforce Innovation](#).

**EMPLOYMENT BY INDUSTRY**

*N/D = No Data*

	Monroe	Florida
<b>(2008)</b>		
Average Annual Employment	36,758	7,945,162
<hr/>		
Natural Resources & Mining	0.5%	1.2%
Construction	7.6%	6.5%
Trade, Transportation and Utilities	20.2%	20.5%
Manufacturing	0.7%	4.7%
Information	1.2%	2.0%
Other Services	3.8%	3.2%
Public administration	8.1%	5.9%
Unclassified	0.1%	0.1%
Leisure & Hospitality	31.2%	11.9%
Education & Health Services	11.9%	19.4%
Professional & Business Services	8.2%	14.4%
Financial Activities	6.6%	6.6%

**Average Annual Wage**

(2008)

All Industries	\$36,626
Construction	\$35,794
Education & Health Services	\$41,730
Financial Activities	\$45,138
Information	\$49,407
Leisure & Hospitality	\$27,208
Manufacturing	\$36,720
Natural Resources & Mining	\$32,126
Other Services	\$31,369
Professional & Business Services	\$51,754
Public administration	\$52,416
Trade, Transportation and Utilities	\$33,565
Unclassified	\$33,868

**EXISTING EMPLOYMENT**

**Major Private Sector Employers**

<b>Kmart</b>	
Business Line: Retail	
Number of Employees.....	750
<b>HMA (Fishermen's and Lower Keys Memorial)</b>	
Business Line: Hospitals	
Number of Employees.....	600
<b>Baptist (Mariner's Hospital)</b>	
Business Line: Hospital	
Number of Employees.....	500
<b>HTA</b>	
Business Line: Tourist Attraction & Retail Company	
Number of Employees.....	300
<b>Hawks Cay Resort</b>	
Business Line: Resort	
Number of Employees.....	295
<b>Publix</b>	
Business Line: Retail Grocer	
Number of Employees.....	280
<b>FCAA</b>	
Business Line: County Water Comany	
Number of Employees.....	258
<b>Florida Keys Community College</b>	
Business Line: Education	
Number of Employees.....	225
<b>Winn Dixie</b>	
Business Line: Retail Grocer	
Number of Employees.....	195
<b>Singh Resorts</b>	
Business Line: Resort	
Number of Employees.....	185

**TRANSPORTATION**

<b>Federal Interstates</b>		<b>Nearest Airport with Scheduled Commercial Airline Service:</b>	Key West International Airport
<b>Federal Highways</b>	US-1	<b># Runways</b>	1
<b>State Highways</b>		<b>Longest Paved Runway(ft.)</b>	0
<b>Railroads</b>		<b>General Aviation Airports</b>	Marathon Airport
		<b>Local Deep Water Port</b>	Port of Key West
		<b>Miles to Closest Port</b>	5

**STATE AND LOCAL TAXATION**

<b>COUNTY</b>		<b>STATE</b>	
<b>Countywide Ad Valorem Millage Rates:</b>		<b>Corporate Income Tax</b>	5.5%
<b>Government</b>	3.0837	<b>Personal Income Tax</b>	0.0%
<b>Schools</b>	3.3870	<b>Retail Sales Tax</b>	6.0%
<b>Special</b>	0.4262		
<b>Total</b>	6.8969		
<hr/>			
<b>Ad Valorem Tax Exemption:</b>	Yes		
<b>Retail Sales Tax (Local Option)</b>	1.50		
<b>Federal Enterprise Zone</b>	No		
<b>State Enterprise Zone</b>			

**COMMERCIAL/INDUSTRIAL SERVICES**

**Electric Companies:**

- Florida Keys Electric Cooperative System
- Keys Energy Services

**Natural Gas Companies:**

- N/A

**Telephone Companies:**

- AT&T

**Water & Sewer Companies:**

- Florida Keys Aqueduct Authority

**Existing Industrial Zoned Land** No  
**Number of Acres** 0  
**Largest Available Contiguous Parcel** 0

**Industrial Parks** No  
**Number of Acres** 0  
**Largest Available Contiguous Parcel** 0

**Foreign Trade Zones** No  
**Zone Number(s)**

**MEDIA**

**Local Radio Stations:**

- WCTH 100.3 FM
- WKEZ 96.9 FM
- WAIL 99 FM
- WFKZ 103.1 FM
- WKWF 1600 AM
- WEOM 92.7 FM
- WAVK 105.5 FM
- WKEY 93.5 FM

**Local Television Stations:**

- none

**Locally Printed Newspapers:**

- Keynoter
- Marathon Big Pine Free Press
- The Weekly Newspapers
- Key West Citizen
- Solares Hill
- Upper Keys Reporter
- Islamorada Free Press

**EDUCATION**

	Public Schools	Teachers	Enrollments
<b>Elementary:</b>	6	237	3,865
<b>Secondary:</b>	5	250	4,496
<b>Totals:</b>	11	487	8,361

**Private Schools Available: Yes**

**POST SECONDARY EDUCATION SERVING THE COUNTY:**

**Colleges / Universities:**

- Barry University
- St. Leo University

**Junior / Community Colleges:**

- Florida Keys Community College

**Vocational / Technical Schools:**

- none

**Other Schools:**

- none

**FINANCIAL INSTITUTIONS**

**Number of Banks:** 8

**Number of Savings and Loans:** 0

**Number of Credit Unions:** 1



**QUALITY OF LIFE**

**Cost of Living**  
**Price Level Index, (2007)**  
**Florida State Average = 100**

	<b>Sample</b>
<b>Total</b>	142.82
<b>Food</b>	100.00
<b>Housing</b>	194.00
<b>Medical Care</b>	102.00
<b>Personal Goods and Services</b>	103.00
<b>Transportation</b>	102.00

- Medical Services:**
- Lower Keys Medical Center
  - Mariners Hospital
- Recreational Opportunities:**
- Boating
  - Diving
  - Fishing
  - Snorkeling
- Historical Points Of Interest:**
- Custom House
  - Ernest Hemingway House
  - John Audubon House
  - Key West Light House
  - Little White House
  - Pennecamp Coral Marine Reserve
  - Pidgeon Key
- Cultural Events/Festivals:**
- Fantasy Fest

Source: Enterprise Florida ([www.eflorida.com/floridasregionsSubpage.aspx?id=284](http://www.eflorida.com/floridasregionsSubpage.aspx?id=284))

**C. County Vulnerable Population Profile**Source: Florida Department of Health ([www.doh.state.fl.us/DEMO/php/VulnerablePopulations.html](http://www.doh.state.fl.us/DEMO/php/VulnerablePopulations.html))**County Vulnerable Population Profile****County: Monroe****Demographic Indicators**2009 County Population Estimate<sup>1</sup>- 78,37665-84 Population<sup>1</sup>- 12,391Live Births (3yr count)<sup>1</sup>- 2,29885+ Population<sup>1</sup>- 1,602

% of Population 65+- 18%

**Economic Indicators**Population Below Poverty<sup>1</sup>- 8,148Average Monthly  
Medicaid Enrollment<sup>1</sup>- 4,959Food Stamp Recipients<sup>7</sup>- 4,579Uninsured (Under 65)<sup>1</sup>- 13,743WIC Enrollment<sup>1</sup>- 1,923**Vulnerability Indicators**Population with 1  
or more disabilities<sup>2</sup>- 17,536Brain &/or Spinal  
Cord Injured Clients<sup>5</sup>- 8% of Population with 1  
or more disabilities- 22%Estimated Oxygen  
Dependent Clients- 1,203Elders Living Alone<sup>8</sup>- 4,148Elders with Dementia<sup>8</sup>- 2,153Estimated Homeless<sup>7</sup>- 1,121CMS Clients<sup>6</sup>- 120Children in Foster Care<sup>7</sup>- 80Medical Foster Care Children<sup>7</sup>-Developmentally Disabled<sup>4</sup>- 161Dialysis Clients<sup>3</sup>- 41Seriously Mentally  
Ill Adults<sup>7</sup>- 3,496Seriously Emotionally  
Disturbed Children<sup>7</sup>- 1,064

Version 1 June 2009 1

**Data Sources**

1. Dept. of Health Office of Planning, Data Analysis and Evaluation
2. US Census Data
3. Florida End Stage Renal Disease Network
4. Agency for Persons with Disabilities
5. Dept. of Health Brain and Spinal Cord Injury Program
6. Dept. of Health Division of Children's Medical Services
7. Dept. of Children and Families
8. Dept. of Elder Affairs

## D. Critical Facility Vulnerability Analysis

Considerable staff resources were expended to update the critical facilities inventory. Specific attention was paid to health care facilities such as hospitals and nursing homes; emergency response agencies, hazardous materials, mobile home parks, schools and colleges and community centers. Where possible, communications resources and community infrastructure, and utilities such as water and wastewater facilities, were located by latitude and longitude and overlaid on the storm tide limits map. Each facility has the name, location, latitude/longitude coordinates, description, critical code and results of the 2010 surge analysis based on the most accurate topographic data and the Sea, Lake and Overland Surges from Hurricanes (SLOSH) model.

The Critical Facility Inventory (database) includes a comprehensive list of critical facilities identified by the State and County Emergency Management agencies. This inventory is not published as part of the report. However, selected facilities that may require evacuation or mitigation, based on vulnerability to storm surge, flooding or fire, or that are located within a county evacuation zone, are identified in the tables that follow. The tables include

- Facility Type Code (see Table IV-12);
- Name, Address, City and Zip code;
- DEM Elev – Elevation of the facility based on the Digital Elevation Model, in feet;
- Evac Zone – County evacuation zone where the facility is located, where “X” means not in a county evacuation zone;
- Surge – Lowest category storm surge zone based on the SLOSH model, where “0” means not in a surge zone;
- Fire – Wildfire Interface / Level of Concern (Yes/No);
- Flood – Freshwater flooding based on the Federal Emergency Management Agency Flood Maps, where “X” means not in a flood zone (see Table II-10); and
- Description of the Facility Type Code.

**Table IVC-1 Health Care Facilities Vulnerability Assessment  
Monroe County**

Facility Type	Name	Address	City	Zip	DEM Elev	Evac Zone	Surge	Fire	Flood	Detail
11	BAYSHORE MANOR	5200 JR. COLLEGE ROAD	KEY WEST	33040	2.05	1	1	N	VE	Assisted Living Facility
11	HERON, THE	1320 COCO PLUM DRIVE	MARATHON	33050	2.76	3	1	N	AE	Assisted Living Facility
11	FOUNTAINS OF LIVING, INC. DBA LILLIE'S H	119 HARBOR VIEW DRIVE	TAVERNIER	33070	8.72	4	4	N	X	Assisted Living Facility
17	GUIDANCE CLINIC OF MIDDLE KEYS/ CSU	3000 41ST STREET OCEAN	MARATHON	33050	1.22	3	1	N	AE	Crisis Stabilization Unit
18	FMC DIALYSIS SERVICES KEY WEST	1122 N ROSEVELT BLVD/KEY PLAZA	KEY WEST	33040	1.62	1	1	N	AE	End-State Renal Disease
22	HOSPICE OF FLORIDA KEYS, INC	1319 WILLIAM STREET	KEY WEST	33040	4.75	1	3	N	X500	Hospice
23	DEPOO HOSPITAL	1200 KENNEDY DRIVE	KEY WEST	33040	2.21	1	1	N	AE	Hospital
23	LOWER KEYS MEDICAL CENTER	5900 COLLEGE ROAD	KEY WEST	33041	8.00	1	4	N	X500	Hospital
23	FISHERMEN'S HOSPITAL	3301 OVERSEAS HIGHWAY	MARATHON	33050	5.07	3	2	N	AE	Hospital
23	MARINERS HOSPITAL	91500 OVERSEAS HWY	TAVERNIER	33070	5.99	4	3	N	AE	Hospital
26	DAVID F GRIDER DO	29960 OVERSEAS HWY	BIG PINE KEY	33043	4.23	2	2	Y	AE	Clinical Laboratory
26	ADVANCED MEDICAL SPECIALTIES	83224 OVERSEAS HWY MM83	ISLAMORADA	33036	4.61	4	2	N	AE	Clinical Laboratory
26	JOANNE F MAHONEY MD PA	95360 OVERSEAS HWY 1	KEY LARGO	33037	5.90	4	2	N	AE	Clinical Laboratory
26	KEY WEST UROLOGY ASSOCIATES INC	1111 12TH STREET SUITE 108	KEY WEST	33040	1.17	1	1	N	AE	Clinical Laboratory
26	OLD TOWN COMMUNITY HEALTH CENTER PA	3134 NSIDE DRIVE	KEY WEST	33040	2.23	1	1	N	AE	Clinical Laboratory
26	MICHAEL E BERMAN MD	1411 WHITE ST	KEY WEST	33040	3.88	1	2	N	AE	Clinical Laboratory
26	MICHAEL D BURTON DO	1446 KENNEDY DRIVE	KEY WEST	33040	1.98	1	1	N	AE	Clinical Laboratory
26	LOWER KEYS MEDICAL CENTER	5900 COLLEGE ROAD	KEY WEST	33040	1.85	1	1	N	AE	Clinical Laboratory
26	MONROE COUNTY HEALTH DEPARTMENT HEALTH C	1200 KENNEDY DR	KEY WEST	33041	2.21	1	1	N	AE	Clinical Laboratory
26	MONROE COUNTY HEALTH DEPARTMENT / ROOSEV	105 OLIVIA ST	KEY WEST	33041	8.00	1	4	N	X500	Clinical Laboratory

Facility Type	Name	Address	City	Zip	DEM Elev	Evac Zone	Surge	Fire	Flood	Detail
26	SOUTHERN MEDICAL GROUP	1111 12TH ST #210	KEY WEST	33040	1.17	1	1	N	AE	Clinical Laboratory
26	STARKS PEDIATRICS	2407 N ROOSEVELT BLVD	KEY WEST	33040	2.35	1	1	N	AE	Clinical Laboratory
26	GEORGE D PETERSON MD PA	5450 MACDONALD AVENUE SUITE 12	KEY WEST	33040	1.73	1	1	N	AE	Clinical Laboratory
26	KEY WEST CARDIOVASCULAR CENTER OF EXCELL	3401 NORTHSIDE DR	KEY WEST	33040	3.10	1	2	N	AE	Clinical Laboratory
26	WOMANKIND INC	3142 NORTHSIDE DR STE 101	KEY WEST	33040	2.17	1	1	N	AE	Clinical Laboratory
26	KELLEY VALLE MD	5450 MACDONALD AVE SUITE 4	KEY WEST	33040	1.73	1	1	N	AE	Clinical Laboratory
26	RURAL HEALTH NETWORK OF MONROE COUNTY IN	1623 SPALDING CT	KEY WEST	33040	2.61	1	1	N	AE	Clinical Laboratory
26	SHARON V WARD MD PA	3224 N ROOSEVELT BLVD	KEY WEST	33040	2.20	1	1	N	AE	Clinical Laboratory
26	MARTINEZ MEDICAL LABORATORY	3412 DUCK AVE	KEY WEST	33040	4.65	1	2	N	AE	Clinical Laboratory
26	LOWER KEYS MEDICAL CENTER	5900 COLLEGE RD	KEY WEST	33040	1.85	1	1	N	AE	Clinical Laboratory
26	LOWER KEYS MEDICAL CENTER - LABOR & DELI	5900 JR COLLEGE RD	KEY WEST	33040	1.85	1	1	N	AE	Clinical Laboratory
26	KEY WEST DERMATOLOGY	1010 KENNEDY DR STE 304	KEY WEST	33040	3.00	1	1	N	AE	Clinical Laboratory
26	JAMES W FORSTER MD PA	8151 OVERSEAS HWY SUITE 400	MARATHON	33050	4.44	3	2	N	AE	Clinical Laboratory
26	FISHERMENS HOSPITAL CLINICAL LABORATORY	3301 OVERSEAS HWY	MARATHON	33050	5.07	3	2	N	AE	Clinical Laboratory
26	FISHERMENS HOSPITAL - CARDIOPULMONARY LA	3301 OVERSEAS HWY	MARATHON	33050	5.07	3	2	N	AE	Clinical Laboratory
26	MONROE COUNTY HEALTH DEPARTMENT/RUTH IVA	3333 OVERSEAS HWY	MARATHON	33050	4.81	3	2	N	AE	Clinical Laboratory
26	RURAL HEALTH NETWORK OF MONROE COUNTY FL	2855 OVERSEAS HIGHWAY	MARATHON	33050	5.09	3	2	N	AE	Clinical Laboratory
26	KEYS PATHOLOGY ASSOCIATES PA	3301 OVERSEAS HWY	MARATHON	33050	5.07	3	2	N	AE	Clinical Laboratory
26	SOUTH FLORIDA PATHOLOGY LABORATORY PA	11400 OVERSEAS HWY STE 209	MARATHON	33050	4.72	3	2	N	AE	Clinical Laboratory
26	MARINERS HOSPITAL CLINICAL LAB	91500 OVERSEAS HWY	TAVERNIER	33070	5.99	4	3	N	AE	Clinical Laboratory

Facility Type	Name	Address	City	Zip	DEM Elev	Evac Zone	Surge	Fire	Flood	Detail
26	MARINERS HOSPITAL BLOOD GAS LAB	91500 OVERSEAS HWY	TAVERNIER	33070	5.99	4	3	N	AE	Clinical Laboratory
26	MONROE COUNTY HEALTH DEPARTMENT	50 HIGHPOINT RD SUITE 105	TAVERNIER	33070	5.83	4	2	N	AE	Clinical Laboratory
26	FLORIDA KEYS DERMATOLOGY LLC	91550 OVERSEAS HWY STE 207	TAVERNIER	33073	5.58	4	3	Y	AE	Clinical Laboratory
32	GUIDANCE CLINIC OF MIDDLE KEYS (RTF)	3000 41ST STREET OCEAN	MARATHON	33050	1.22	3	1	N	AE	Residential Treatment Facility
35	KEY WEST CONVALESCENT CENTER, INC.	5860 W JR. COLLEGE ROAD	KEY WEST	33040	1.60	1	1	N	AE	Skilled Nursing Facility
35	PLANTATION KEY CONVALESCENT CENTER	48 HIGH POINT ROAD	TAVERNIER	33070	5.84	4	2	N	AE	Skilled Nursing Facility

**Table IVC-2 Other Critical Facilities Vulnerability Assessment  
Monroe County**

Facility Type	Name	Address	City	Zip	DEM Elev	Evac Zone	Surge	Fire	Flood	Detail
11303	W206AS		BIG PINE KEY		1.66	2	1	N	AE	Radio Communications Tower
11303	WWUS		BIG PINE KEY		1.62	2	1	Y	AE	Radio Communications Tower
11303	WGGP-LP		BIG PINE KEY		1.01	2	1	Y	AE	Radio Communications Tower
11303	W229AL		FLAMINGO		0.00	6	1	N	AE	Radio Communications Tower
11303	W257CA		FLAMINGO		0.00	6	1	N	AE	Radio Communications Tower
11303	W297AM		FLAMINGO		0.00	6	1	N	AE	Radio Communications Tower
11303	WMFL		FLORIDA CITY		8.47	4	3	Y	X	Radio Communications Tower
11303	W221AY		ISLAMORADA		5.22	4	2	N	AE	Radio Communications Tower
11303	W257AC		ISLAMORADA		-0.08	4	1	Y	AE	Radio Communications Tower
11303	W287BA		ISLAMORADA		7.68	4	4	N	AE	Radio Communications Tower
11303	W225AU		ISLAMORADA		-0.08	4	1	Y	AE	Radio Communications Tower
11303	W238BF		ISLAMORADA		4.94	4	2	Y	AE	Radio Communications Tower
11303	W297AS		ISLAMORADA		7.68	4	4	N	AE	Radio Communications Tower
11303	W227AD		KEY COLONY BEACH		1.33	3	1	N	AE	Radio Communications Tower
11303	WKYZ		KEY COLONY BEACH		3.17	3	2	N	AE	Radio Communications Tower
11303	WGES		KEY LARGO		8.19	5	3	N	X500	Radio Communications Tower
11303	WMKL		KEY LARGO		8.47	4	3	Y	X	Radio Communications Tower



Facility Type	Name	Address	City	Zip	DEM Elev	Evac Zone	Surge	Fire	Flood	Detail
11303	WMKL		KEY LARGO		8.19	5	3	N	X500	Radio Communications Tower
11303	W228AY		KEY LARGO		8.19	5	3	N	X500	Radio Communications Tower
11303	W296BP		KEY LARGO		4.60	4	2	Y	AE	Radio Communications Tower
11303	WZMQ		KEY LARGO		9.57	4	3	N	X	Radio Communications Tower
11303	WZMQ		KEY LARGO		8.19	5	3	N	X500	Radio Communications Tower
11303	WORZ-LP		KEY LARGO		3.90	5	2	Y	AE	Radio Communications Tower
11303	WKWF		KEY WEST		0.00	1	0	N	AE	Radio Communications Tower
11303	WKIZ		KEY WEST		0.00	1	0	N	AE	Radio Communications Tower
11303	WJIR		KEY WEST		7.06	1	3	N	X	Radio Communications Tower
11303	WKWR		KEY WEST		5.39	1	3	N	AE	Radio Communications Tower
11303	WAVQ		KEY WEST		7.06	1	3	N	X	Radio Communications Tower
11303	W220DF		KEY WEST		7.06	1	3	N	X	Radio Communications Tower
11303	W202BO		KEY WEST		0.95	1	1	N	VE	Radio Communications Tower
11303	WEOW		KEY WEST		2.39	2	1	N	AE	Radio Communications Tower
11303	WKEY-FM		KEY WEST		0.37	1	1	N	AE	Radio Communications Tower
11303	WCNK		KEY WEST		1.62	2	1	Y	AE	Radio Communications Tower
11303	W235AM		KEY WEST		1.78	2	1	N	AE	Radio Communications Tower
11303	W240BT		KEY WEST		5.57	1	3	N	AE	Radio Communications Tower
11303	W287AP		KEY WEST		5.57	1	3	N	AE	Radio Communications Tower
11303	W213BF		KEY WEST		8.17	1	5	N	X	Radio Communications Tower

Facility Type	Name	Address	City	Zip	DEM Elev	Evac Zone	Surge	Fire	Flood	Detail
11303	W291BP		KEY WEST		1.78	2	1	N	AE	Radio Communications Tower
11303	WMFM		KEY WEST		2.39	2	1	N	AE	Radio Communications Tower
11303	WAIL		KEY WEST		0.20	2	1	Y	AE	Radio Communications Tower
11303	WIIS		KEY WEST		8.17	1	5	N	X	Radio Communications Tower
11303	WXJ95 162.4		KEY WEST		-0.65	2	1	Y	AE	Radio Communications Tower
11303	W236AQ		LAYTON		1.16	3	1	N	AE	Radio Communications Tower
11303	W240BF		LAYTON		2.59	4	1	Y	AE	Radio Communications Tower
11303	WFFG		MARATHON		-1.12	3	1	N	AE	Radio Communications Tower
11303	WAVK		MARATHON		1.16	3	1	N	AE	Radio Communications Tower
11303	WWWK		MARATHON		4.49	3	2	N	AE	Radio Communications Tower
11303	W295AN		MARATHON		4.59	3	2	N	AE	Radio Communications Tower
11303	WGMX		MARATHON		3.17	3	2	N	AE	Radio Communications Tower
11303	W280DP		NORTH KEY LARGO		8.19	5	3	N	X500	Radio Communications Tower
11303	WFKZ		PLANTATION KEY		-0.37	4	1	Y	AE	Radio Communications Tower
11303	WCTH		PLANTATION KEY		4.81	4	2	Y	AE	Radio Communications Tower
11303	WCTH		PLANTATION KEY		-0.08	4	1	Y	AE	Radio Communications Tower
11303	W243BU		RAMROD KEY		3.58	2	1	Y	AE	Radio Communications Tower
11303	W285DR		RAMROD KEY		3.58	2	1	Y	AE	Radio Communications Tower
11303	W290BF		RAMROD KEY		3.58	2	1	Y	AE	Radio Communications Tower
11303	WKLG		ROCK HARBOR		9.57	4	3	N	X	Radio Communications Tower

Facility Type	Name	Address	City	Zip	DEM Elev	Evac Zone	Surge	Fire	Flood	Detail
11303	WKLG		ROCK HARBOR		9.57	4	3	N	X	Radio Communications Tower
11303	WPIK		SUMMERLAND KEY		2.39	2	1	N	AE	Radio Communications Tower
11303	WKEZ-FM		TAVERNIER		4.94	4	2	Y	AE	Radio Communications Tower
11303	WWG60 162.450		TEA TABLE KEY		0.00	4	0	N	VE	Radio Communications Tower
75018	Marathon Sub-Yard	3100 Overseas Highway	MARATHON		5.50	3	2	N	AE	Fuel Facility - FDOT
75038	BIG PINE (FL)		BIG PINE KEY	33043	4.83	2	2	N	AE	Electric Substation
75038	CUDJOE		CUDJOE KEY	33042	8.45	2	3	Y	AE	Electric Substation
75038	ISLAMORADA		ISLAMORADA	33036	7.43	4	4	N	X	Electric Substation
75038	JEWFISH CREEK		KEY LARGO	33037	9.26	4	3	Y	X	Electric Substation
75038	KEY LARGO		KEY LARGO	33037	10.23	4	4	Y	X	Electric Substation
75038	KEY WEST		KEY WEST	33040	9.51	1	5	N	X	Electric Substation
75038	MARATHON		MARATHON	33050	4.26	3	2	N	AE	Electric Substation
75038	MARATHON		MARATHON SHORES	33050	3.50	3	2	N	AE	Electric Substation
75038	STOCK ISLAND		STOCK ISLAND	33040	4.72	1	3	N	AE	Electric Substation
75038	TAVERNIER		TAVERNIER	33037	4.61	4	2	N	AE	Electric Substation
75041	BOOT KEY LF	SR931	BOOT KEY	33050	8.69	3	5	N	AE	Solid Waste Facility
75041	CUDJOE KEY INCINERATORS #7 & 8	CUDJOE KEY RD, N OF MM 21.5	CUDJOE KEY	33042	5.67	2	2	N	AE	Solid Waste Facility
75041	CUDJOE KEY TRANSFER STATION	US1, BETWEEN MILE MARK 21 & 22	CUDJOE KEY	33042	5.67	2	2	N	AE	Solid Waste Facility
75041	CUDJOE KEY TRANSFER STATION (NEW)	BLIMP RD AT MM-21.5	CUDJOE KEY	33042	5.67	2	2	N	AE	Solid Waste Facility
75041	CUDJOE KEY LANDFILL	CUDJOE KEY RD, WEST OF MM 21.5	CUDJOE KEY	33042	15.90	2	0	N	AE	Solid Waste Facility
75041	CUDJOE KEY LANDFILL	CUDJOE KEY RD, WEST OF MM 21.5	CUDJOE KEY	33042	15.90	2	0	N	AE	Solid Waste Facility
75041	FLEMMING KEY LF	SW CORNER OF FLEMMING KEY	FLEMMING KEY	33040	7.17	1	3	N	AE	Solid Waste Facility
75041	KEY LARGO TRANSFER STATION	SR905A	KEY LARGO	33037	1.47	5	1	N	AE	Solid Waste Facility

Facility Type	Name	Address	City	Zip	DEM Elev	Evac Zone	Surge	Fire	Flood	Detail
75041	KEY LARGO LANDFILL	STATE ROAD 905	KEY LARGO	33037	42.90	5	0	N	X500	Solid Waste Facility
75041	KEY LARGO TRANSFER STATION (NEW)	SR905, 5.4MI FROM A1A INTERSEC	KEY LARGO	33037	11.49	5	4	N	X	Solid Waste Facility
75041	KEY LARGO INCINERATORS #1,2&3	SR905	KEY LARGO	33037	11.49	5	4	N	X	Solid Waste Facility
75041	KEY LARGO TRANSFER STATION (NEW)	SR905, 5.4MI FROM A1A INTERSEC	KEY LARGO	33037	11.49	5	4	N	X	Solid Waste Facility
75041	KEY LARGO DUMP (OLD)	SR905A	KEY LARGO	33037	10.71	5	3	N	AE	Solid Waste Facility
75041	ALL COUNTIES RECYCLING	MAGNOLIA ST	KEY LARGO	33037	2.65	4	2	Y	AE	Solid Waste Facility
75041	STOCK ISLAND LF (KEY WEST LF)	JUNIOR COLLEGE RD	KEY WEST	33040	85.22	1	0	N	AE	Solid Waste Facility
75041	STOCK ISLAND RECYCLE AND TRANSFER STATION	5631 4TH AVE STOCK ISLAND	KEY WEST	33040	4.44	1	3	N	AE	Solid Waste Facility
75041	PULPO TRANSFER STATION	CALLE DOS ST ROCKLAND KEY	KEY WEST	33040	4.48	2	2	N	AE	Solid Waste Facility
75041	LONG KEY LANDFILL	US1, LONG KEY, BETWEEN MM67 & 68	LONG KEY	33050	52.16	4	0	N	VE	Solid Waste Facility
75041	LONG KEY INCINERATORS #4,5&6	US1, NEAR MILE MARKER 67	LONG KEY	33050	3.13	4	2	N	VE	Solid Waste Facility
75041	LONG KEY TRANSFER STATION (NEW)	WEST OF US 1 AT MM 68.5	LONG KEY	33050	3.13	4	2	N	VE	Solid Waste Facility
75041	MIDDLE TORCH KEY	MIDDLE TORCH RD	MIDDLE TORCH KEY	33042	-0.24	2	1	N	AE	Solid Waste Facility
75041	ROCKLAND RECYCLING CENTER	MILE MARKER 8.8 US-1	ROCKLAND KEY	33040	4.72	2	2	N	AE	Solid Waste Facility
75041	ROCKLAND RECYCLING CENTER	MILE MARKER 8.8 US-1	ROCKLAND KEY	33040	4.72	2	2	N	AE	Solid Waste Facility
75041	KEY WEST RES RECOVERY FACIL (OLD)	JUNIOR COLLEGE RD	STOCK ISLAND	33040	5.39	1	2	N	AE	Solid Waste Facility
75041	CARVAJAL TRANSFER STATION	4 TH AVENUE	STOCK ISLAND	33040	4.65	1	3	N	AE	Solid Waste Facility
75041	KEY WEST TRANSFER STATION	6500 FRONT STREET	STOCK ISLAND	33040	2.05	1	1	N	AE	Solid Waste Facility

Facility Type	Name	Address	City	Zip	DEM Elev	Evac Zone	Surge	Fire	Flood	Detail
75041	ROBBIE'S RECYCLE & TRANSFER STATION	END OF SHRIMP RD	STOCK ISLAND	33040	5.36	1	3	N	AE	Solid Waste Facility
75041	CITY OF KEY WEST-SOUTHERNMOST WASTE-TO- ENERGY FAC	5701 COLLEGE ROAD	STOCK ISLAND	33040	5.39	1	2	N	AE	Solid Waste Facility
85004	LOOP ROAD EDUCATIONAL CENTER	STATE ROAD 68 (LOOP ROAD)	OCHOPEE	33943	0.00	6	2	N	AE	Public Water Supply
85006	Whale Harbor Inn STP			0	3.95	4	2	N	AE	Wastewater Facility
85006	Holiday Isle Resort			0	3.08	4	2	N	AE	Wastewater Facility
85006	Howard Johnson's Islamorada At Holiday Isle			0	3.61	4	2	N	AE	Wastewater Facility
85006	Pelican Cove Condominium			0	3.68	4	2	N	AE	Wastewater Facility
85006	Tropical Reef Resort			0	2.95	4	1	N	AE	Wastewater Facility
85006	Harbor Lights Motel Of Holiday Isle			0	3.15	4	1	N	AE	Wastewater Facility
85006	Windley Key			0	8.61	4	4	N	AE	Wastewater Facility
85006	Jolly Roger Trailer Park			0	4.09	3	2	N	AE	Wastewater Facility
85006	Duck Key Wastewater Cooperative			0	4.44	3	3	N	VE	Wastewater Facility
85006	Long Key Townhouse Condominium			0	2.61	4	2	N	AE	Wastewater Facility
85006	Outdoor Resorts At Long Key			0	5.23	4	2	N	AE	Wastewater Facility
85006	Long Key State Recreation Area			0	1.57	4	1	Y	VE	Wastewater Facility
85006	Little Italy Restaurant			0	4.20	4	2	N	AE	Wastewater Facility
85006	Keys Marine Laboratory			0	0.64	4	1	N	VE	Wastewater Facility
85006	Oceanside Isle Apartment			0	3.18	4	2	N	VE	Wastewater Facility
85006	Fiesta Key KOA			0	1.41	4	1	N	AE	Wastewater Facility
85006	Fiesta Key KOA			0	1.41	4	1	N	AE	Wastewater Facility
85006	Boy Scouts Of America Sea Base STP			0	4.37	4	1	N	AE	Wastewater Facility

Facility Type	Name	Address	City	Zip	DEM Elev	Evac Zone	Surge	Fire	Flood	Detail
85006	Boy Scouts Of America Sea Base STP			0	4.37	4	1	N	AE	Wastewater Facility
85006	Caloosa Cove Marina - Resort			0	4.81	4	2	N	AE	Wastewater Facility
85006	Sandy Point Condominium			0	4.14	4	2	N	AE	Wastewater Facility
85006	Bay Colony Villas			0	3.73	4	2	N	AE	Wastewater Facility
85006	Matecumbe Resort			0	2.56	4	1	N	AE	Wastewater Facility
85006	Papa Joe's Restaurant			0	3.70	4	2	Y	AE	Wastewater Facility
85006	Lazy Days Restaurant			0	2.00	4	1	N	AE	Wastewater Facility
85006	Palms Of Islamorada Condominium			0	4.39	4	2	N	AE	Wastewater Facility
85006	Hampton Inn			0	4.61	4	3	N	AE	Wastewater Facility
85006	Breezy Palms Resort Motel			0	5.37	4	3	N	AE	Wastewater Facility
85006	La Siesta Resort			0	8.55	4	4	N	X	Wastewater Facility
85006	Sand Pebbles Condominium WWTF			0	9.09	4	4	Y	AE	Wastewater Facility
85006	Uncle's Restaurant			0	6.63	4	3	N	X500	Wastewater Facility
85006	Maison Matecumbe			0	0.00	4	0	N	VE	Wastewater Facility
85006	Dino's			0	3.42	4	2	N	AE	Wastewater Facility
85006	Tarpon Flats Condominiums			0	10.10	4	4	N	X500	Wastewater Facility
85006	Blackfin Resort & Marina			0	3.32	3	2	N	AE	Wastewater Facility
85006	Lucy Apartments			0	3.99	3	2	N	AE	Wastewater Facility
85006	Maytag Coin Laundry			0	0.00	3	0	N	VE	Wastewater Facility
85006	International House Of Pancakes			0	5.31	3	2	N	AE	Wastewater Facility
85006	Gulfside Village Condo Assn			0	5.78	3	2	N	AE	Wastewater Facility
85006	Reef At Marathon Resort Club			0	1.84	3	1	N	AE	Wastewater Facility
85006	Kingsail Resort			0	2.33	3	1	N	AE	Wastewater Facility
85006	Coconut Cay Resort			0	3.67	3	1	N	AE	Wastewater Facility
85006	Seaward - Resort, Restaurant & Marina			0	3.43	3	2	N	AE	Wastewater Facility

Facility Type	Name	Address	City	Zip	DEM Elev	Evac Zone	Surge	Fire	Flood	Detail
85006	Thompson Adams WWTP			0	1.38	3	2	N	AE	Wastewater Facility
85006	Marathon CBP			0	1.38	3	2	N	AE	Wastewater Facility
85006	Key Colony Beach, City Of			0	3.07	3	2	N	AE	Wastewater Facility
85006	Bonefish Tower			0	4.22	3	2	N	AE	Wastewater Facility
85006	Marathon Airport Terminal			0	3.19	3	2	N	AE	Wastewater Facility
85006	Marathon Airport Terminal			0	3.19	3	2	N	AE	Wastewater Facility
85006	Royal Plum Condominium			0	2.65	3	1	N	AE	Wastewater Facility
85006	Treasure Cay Condominium			0	2.85	3	1	N	AE	Wastewater Facility
85006	Office Depot Plaza			0	3.77	3	2	N	AE	Wastewater Facility
85006	Coco Plum Beach Apts - Terraces Condo			0	3.89	3	2	N	AE	Wastewater Facility
85006	Key Lime Resort			0	3.76	3	2	N	AE	Wastewater Facility
85006	Marie's Yacht Harbor Club			0	2.15	3	1	N	AE	Wastewater Facility
85006	Holiday Inn - Marathon			0	7.11	3	3	N	AE	Wastewater Facility
85006	Ramada			0	5.69	3	2	N	AE	Wastewater Facility
85006	Seawatch Condominium			0	4.44	3	2	N	AE	Wastewater Facility
85006	Quay Restaurant			0	4.30	3	2	N	VE	Wastewater Facility
85006	Trade Winds West Condo			0	0.00	3	0	N		Wastewater Facility
85006	Pelican Motel & Trailer Park			0	3.20	3	2	N	VE	Wastewater Facility
85006	Sombrero Country Club			0	6.67	3	2	N	AE	Wastewater Facility
85006	Casa Cayo Condo STP			0	3.24	3	2	N	VE	Wastewater Facility
85006	USCG Station - Marathon			0	2.75	3	2	N	AE	Wastewater Facility
85006	Guidance Clinic Of The Middle Keys			0	4.21	3	2	N	AE	Wastewater Facility
85006	Monroe Regional Service Center			0	4.23	3	2	N	VE	Wastewater Facility

Facility Type	Name	Address	City	Zip	DEM Elev	Evac Zone	Surge	Fire	Flood	Detail
85006	Monroe Regional Service Center			0	4.23	3	2	N	VE	Wastewater Facility
85006	Island Club Condo			0	0.03	3	1	N	AE	Wastewater Facility
85006	Sombrero Resort & Lighthouse Marina			0	2.58	3	1	N	AE	Wastewater Facility
85006	Marathon Country Club Condominium			0	1.99	3	1	N	AE	Wastewater Facility
85006	Keys Fisheries WWTP			0	3.84	3	2	N	AE	Wastewater Facility
85006	Stanley Switlik Elementary			0	4.77	3	2	N	VE	Wastewater Facility
85006	Mid - Town Trailer Park			0	3.75	3	2	N	AE	Wastewater Facility
85006	Tropic Isle Apts			0	0.00	3	0	N	VE	Wastewater Facility
85006	Home Depot - Boot Key Harbor Plaza WWTP			0	6.29	3	2	N	AE	Wastewater Facility
85006	Marathon Plaza II			0	2.95	3	2	N	AE	Wastewater Facility
85006	Publix Plaza			0	5.03	3	2	N	AE	Wastewater Facility
85006	Key RV Park			0	4.53	3	2	Y	AE	Wastewater Facility
85006	Crystal Bay Resort WWTF			0	5.10	3	2	N	AE	Wastewater Facility
85006	Crystal Bay Resort WWTF			0	5.10	3	2	N	AE	Wastewater Facility
85006	Marathon Key Beach Club			0	4.72	3	2	N	AE	Wastewater Facility
85006	Charlie's Bar & Grill			0	5.90	3	2	N	AE	Wastewater Facility
85006	Eastwind Apartments			0	1.60	3	1	N	AE	Wastewater Facility
85006	K-Mart Plaza - Marathon			0	3.18	3	2	N	AE	Wastewater Facility
85006	Gulfshore Apts			0	3.27	3	2	N	VE	Wastewater Facility
85006	Wendy's Restaurant			0	3.29	3	2	N	AE	Wastewater Facility
85006	Panda House Chinese Restaurant			0	2.07	3	2	N	AE	Wastewater Facility
85006	Blackfin Resort & Marina			0	3.32	3	2	N	AE	Wastewater Facility
85006	Boot Key Marina - Faro Blanco Oceanside			0	2.63	3	2	N	AE	Wastewater Facility



Facility Type	Name	Address	City	Zip	DEM Elev	Evac Zone	Surge	Fire	Flood	Detail
85006	Boot Key Marina - Faro Blanco Oceanside			0	2.63	3	2	N	AE	Wastewater Facility
85006	Marathon Trailerama STP			0	1.66	3	1	N	AE	Wastewater Facility
85006	Hammocks At Marathon			0	6.33	3	2	N	AE	Wastewater Facility
85006	Faro Blanco Condominium			0	3.77	3	2	N	AE	Wastewater Facility
85006	Faro Blanco Condominium			0	5.69	3	2	N	AE	Wastewater Facility
85006	Faro Blanco Condominium			0	5.69	3	2	N	AE	Wastewater Facility
85006	Buccaneer Resort			0	4.64	3	2	N	AE	Wastewater Facility
85006	Sugarloaf Key KOA			0	2.57	3	2	N	AE	Wastewater Facility
85006	Fishermen's Hospital			0	4.55	3	2	N	AE	Wastewater Facility
85006	Cobia Point Condo			0	0.00	3	0	N	VE	Wastewater Facility
85006	Spanish Galleon Condo			0	3.59	3	2	N	VE	Wastewater Facility
85006	Harbor House Condominium			0	2.30	3	1	N	AE	Wastewater Facility
85006	Sombrero Ridge Condo			0	0.00	3	0	N	VE	Wastewater Facility
85006	Dockside Lounge			0	1.32	3	1	N	VE	Wastewater Facility
85006	Sombrero Country Club			0	1.87	3	1	N	AE	Wastewater Facility
85006	Sombrero Country Club			0	1.87	3	1	N	AE	Wastewater Facility
85006	Captain's Quarters Condominium			0	5.44	3	3	N	AE	Wastewater Facility
85006	Schooner Condominium WWTP			0	5.13	3	2	N	AE	Wastewater Facility
85006	Harbor Club South Condo Assoc			0	6.00	3	3	N	AE	Wastewater Facility
85006	Sombrero Country Club			0	6.67	3	2	N	AE	Wastewater Facility
85006	Coral Club Condominium			0	3.67	3	2	N	AE	Wastewater Facility
85006	Sombrero Reef Inn			0	3.21	3	2	N	AE	Wastewater Facility
85006	Marathon High School			0	5.09	3	3	Y	AE	Wastewater Facility

Facility Type	Name	Address	City	Zip	DEM Elev	Evac Zone	Surge	Fire	Flood	Detail
85006	Marathon Manor Nursing Home			0	1.59	3	1	Y	AE	Wastewater Facility
85006	Sugarloaf Elementary School			0	5.54	2	2	Y	AE	Wastewater Facility
85006	Lazy Lakes Campgrounds			0	1.01	2	1	Y	AE	Wastewater Facility
85006	Mangrove Mama's Restaurant			0	2.64	2	1	Y	AE	Wastewater Facility
85006	Venture Out At Cudjoe Cay			0	3.89	2	1	Y	AE	Wastewater Facility
85006	Summerland Palms Trailer Park			0	1.61	2	1	Y	AE	Wastewater Facility
85006	Looe Key Reef Resort			0	1.33	2	1	N	AE	Wastewater Facility
85006	Lucky's Landing			0	1.00	2	1	Y	AE	Wastewater Facility
85006	Breezy Pines Trailer Park			0	3.46	2	1	Y	AE	Wastewater Facility
85006	Big Pine Key Road Prison			0	5.70	2	1	Y	AE	Wastewater Facility
85006	Big Pine Key School			0	2.46	2	1	Y	AE	Wastewater Facility
85006	Big Pine Plaza Shopping Center			0	2.71	2	1	N	AE	Wastewater Facility
85006	KD 's Big Pine Steak & Seafood House			0	4.66	2	2	N	AE	Wastewater Facility
85006	Lady Alexander Condo Assoc, Inc			0	0.00	2	0	N		Wastewater Facility
85006	Big Pine Motel			0	4.84	2	2	N	AE	Wastewater Facility
85006	Seahorse Campground			0	3.65	2	1	N	AE	Wastewater Facility
85006	Big Pine Batch Plant			0	4.33	2	2	Y	AE	Wastewater Facility
85006	Key Deer Grill			0	7.63	2	3	N	AE	Wastewater Facility
85006	Sands Subdivision Affordable Hsng			0	2.29	2	1	N	AE	Wastewater Facility
85006	Big Pine Key Fishing Lodge WWTF			0	3.53	2	2	N	AE	Wastewater Facility
85006	Bahia Honda State Park #2			0	3.21	2	1	N	AE	Wastewater Facility
85006	Bahia Honda State Park #2			0	2.43	2	1	N	AE	Wastewater Facility

Facility Type	Name	Address	City	Zip	DEM Elev	Evac Zone	Surge	Fire	Flood	Detail
85006	Sunshine Key Camping Resort			0	0.62	2	1	N	VE	Wastewater Facility
85006	Hawks Nest			0	3.84	3	3	N	AE	Wastewater Facility
85006	Marathon Marina			0	1.33	3	1	N	AE	Wastewater Facility
85006	Galway Bay Mobile Home Park			0	2.32	3	1	N	AE	Wastewater Facility
85006	Florida Keys Aqueduct Authority Ro Plt			0	0.00	1	0	N	VE	Wastewater Facility
85006	Utility BD of Key West - Stock Island Pp			0	2.93	1	2	N	AE	Wastewater Facility
85006	Layton, City of - WWTP			0	1.32	1	1	N	AE	Wastewater Facility
85006	Peninsular Marine Enterprises			0	3.33	1	2	N	AE	Wastewater Facility
85006	Key West Resort Utility			0	0.00	1	0	N	AE	Wastewater Facility
85006	Harbor Shores			0	0.00	1	0	N	AE	Wastewater Facility
85006	Richard A Heyman WWTP			0	4.69	1	2	N	AE	Wastewater Facility
85006	Coconut Grove Mobile Home Park			0	1.85	1	1	N	AE	Wastewater Facility
85006	Roy's Trailer Park			0	2.96	1	1	N	AE	Wastewater Facility
85006	Water's Edge Colony			0	2.17	1	1	N	AE	Wastewater Facility
85006	Key Haven Utility			0	4.97	1	1	N	AE	Wastewater Facility
85006	Gerald Adams Elementary School			0	47.78	1	0	N	AE	Wastewater Facility
85006	Lower Florida Keys Medical Center			0	5.88	1	3	N	AE	Wastewater Facility
85006	Geiger Key Marina			0	1.74	2	1	N	AE	Wastewater Facility
85006	Boca Chica Naval Air Station			0	3.82	2	2	N	AE	Wastewater Facility
85006	Rockland Batch Plant			0	4.33	2	2	N	AE	Wastewater Facility
85006	Seaside Resort			0	3.01	2	1	N	VE	Wastewater Facility
85006	Porpoise Point Reel & Racquet Club			0	4.09	2	2	N	AE	Wastewater Facility
85006	Caribbean Village WWTP			0	3.41	2	2	N	VE	Wastewater Facility
85006	Bluewater Key RV Park			0	2.62	2	1	Y	AE	Wastewater Facility

Facility Type	Name	Address	City	Zip	DEM Elev	Evac Zone	Surge	Fire	Flood	Detail
85006	Little Palm Island			0	2.81	2	1	N	AE	Wastewater Facility
85006	Sugarloaf Lodge			0	5.62	2	2	N	VE	Wastewater Facility
85006	Senor Frijoles Restaurant			0	11.38	4	3	Y	X	Wastewater Facility
85006	Italian Fisherman Restaurant			0	5.25	4	3	Y	VE	Wastewater Facility
85006	Moon Bay Condominium			0	4.84	4	3	Y	VE	Wastewater Facility
85006	Tamarind Bay Club, Inc			0	14.59	4	4	Y	X	Wastewater Facility
85006	Winn Dixie - Key Largo			0	9.82	4	3	Y	AE	Wastewater Facility
85006	Key Largo Elementary School			0	1.44	4	3	Y	AE	Wastewater Facility
85006	Florida Keys RV Park			0	8.57	4	3	Y	X	Wastewater Facility
85006	Lake Surprise II Condo			0	1.85	4	3	Y	AE	Wastewater Facility
85006	Family Paradise Island			0	1.46	5	1	N	AE	Wastewater Facility
85006	Big Kahuna			0	0.63	5	3	Y	AE	Wastewater Facility
85006	Anchorage Resort & Yacht Club			0	1.44	5	3	N	AE	Wastewater Facility
85006	Anchorage Resort & Yacht Club			0	1.44	5	3	N	AE	Wastewater Facility
85006	Cross Key Inc			0	0.00	5	0	N	AE	Wastewater Facility
85006	Manatee Bay Club			0	0.00	5	0	N	AE	Wastewater Facility
85006	Southern Bell T & T Co			0	0.00	5	1	N	AE	Wastewater Facility
85006	North WWTP			0	3.61	5	2	Y	AE	Wastewater Facility
85006	Cafe Largo STP			0	9.16	4	3	N	X	Wastewater Facility
85006	Snook's			0	11.10	4	2	N	X	Wastewater Facility
85006	Waldorf Plaza Shopping Center			0	6.58	4	2	Y	X500	Wastewater Facility
85006	Holiday Inn - Key Largo			0	5.11	4	2	Y	X500	Wastewater Facility
85006	Marina Del Mar			0	4.03	4	2	Y	X500	Wastewater Facility
85006	Ocean Divers Inc			0	7.04	4	2	Y	AE	Wastewater Facility
85006	Ramada Inn - KL			0	6.22	4	2	Y	X500	Wastewater Facility
85006	Best Western Suites Of Key Largo			0	5.87	4	2	Y	AE	Wastewater Facility

Facility Type	Name	Address	City	Zip	DEM Elev	Evac Zone	Surge	Fire	Flood	Detail
85006	Holiday By The Sea Condominium			0	9.21	4	3	Y	X500	Wastewater Facility
85006	Key Largo Harbor Marina			0	2.61	4	1	Y	VE	Wastewater Facility
85006	Sanctuary Condominium At Key Largo			0	8.24	4	2	Y	AE	Wastewater Facility
85006	Calusa Camp Resort			0	1.66	4	1	Y	AE	Wastewater Facility
85006	Tradewinds - K - Mart Shopping Center			0	9.92	4	4	Y	AE	Wastewater Facility
85006	Key Largo Kampground & Marina			0	-0.05	4	1	Y	AE	Wastewater Facility
85006	Largo Park			0	10.06	4	3	Y	AE	Wastewater Facility
85006	Coastal Waterway Trailer Park			0	3.86	4	1	Y	AE	Wastewater Facility
85006	Paradise Pub - STP			0	10.73	4	4	Y	X	Wastewater Facility
85006	Fish House Restaurant			0	10.22	4	4	Y	X	Wastewater Facility
85006	Pennekamp State Park			0	10.52	4	5	Y	X	Wastewater Facility
85006	Howard Johnson's Key Largo			0	-0.76	4	1	N	AE	Wastewater Facility
85006	Koblick Marine Center			0	5.04	4	2	Y	AE	Wastewater Facility
85006	Pink Plaza			0	10.13	4	4	N	AE	Wastewater Facility
85006	Florida Bay Club			0	9.27	4	4	Y	AE	Wastewater Facility
85006	Marriott - Key Largo			0	9.33	4	3	Y	AE	Wastewater Facility
85006	Driftwood Travel Trailer Park			0	3.20	4	1	N	VE	Wastewater Facility
85006	Anchor Condominium			0	4.45	4	2	N	AE	Wastewater Facility
85006	Sunset Acres MHP			0	5.22	4	1	N	AE	Wastewater Facility
85006	Blue Waters Trailer Village			0	4.96	4	2	N	AE	Wastewater Facility
85006	Ocean Pointe Condominiums			0	10.97	4	1	Y	AE	Wastewater Facility
85006	Paradise Point M H P			0	3.14	4	1	N	AE	Wastewater Facility
85006	Key Largo Ocean Resort			0	3.49	4	1	N	AE	Wastewater Facility
85006	Coral Sands Trailer Park WWTP			0	3.42	4	1	N	AE	Wastewater Facility

Facility Type	Name	Address	City	Zip	DEM Elev	Evac Zone	Surge	Fire	Flood	Detail
85006	Sunset Hammock Condominium			0	0.00	4	0	N		Wastewater Facility
85006	Silver Shores MHP Inc			0	8.67	4	3	N	AE	Wastewater Facility
85006	Buttonwood Bay Condominiums			0	5.22	4	2	Y	AE	Wastewater Facility
85006	Westin Beach Resort Key Largo			0	4.88	4	2	Y	X500	Wastewater Facility
85006	America Outdoors Campground			0	2.82	4	1	Y	VE	Wastewater Facility
85006	Rock Harbor Club			0	2.80	4	1	Y	VE	Wastewater Facility
85006	Harborage Condominiums			0	5.41	4	2	N	AE	Wastewater Facility
85006	American Legion			0	9.32	4	3	N	X	Wastewater Facility
85006	Landings Of Largo			0	7.85	4	2	N	X	Wastewater Facility
85006	Pizza Hut Restaurant - Key Largo			0	10.80	4	3	N	X	Wastewater Facility
85006	Kawama Yacht Club Condominium			0	1.75	4	1	Y	AE	Wastewater Facility
85006	Key Largo Yacht Club & Condo			0	1.08	4	1	N	AE	Wastewater Facility
85006	Key Largo Shopper			0	0.00	4	0	N		Wastewater Facility
85006	Pilot House Restaurant			0	3.51	4	1	N	AE	Wastewater Facility
85006	Mariner's Club WWTP			0	0.00	4	0	N		Wastewater Facility
85006	Newport Village Apartments			0	0.00	4	0	N		Wastewater Facility
85006	Island Grill			0	2.61	4	1	N	AE	Wastewater Facility
85006	Smuggler's Cove Marina & Resort			0	3.18	4	2	N	AE	Wastewater Facility
85006	Careless Navigator			0	9.32	4	5	N	AE	Wastewater Facility
85006	US Coast Guard Station - Islamorada			0	2.68	4	2	N	AE	Wastewater Facility
85006	Pelican Plaza WWTF			0	2.24	4	1	Y	AE	Wastewater Facility
85006	Seaward - Resort, Restaurant & Marina			0	10.67	4	4	N	X	Wastewater Facility
85006	Executive Bay Club Condo			0	6.20	4	3	N	AE	Wastewater Facility
85006	Seabreeze Trailer Park			0	2.05	4	1	N	AE	Wastewater Facility

Facility Type	Name	Address	City	Zip	DEM Elev	Evac Zone	Surge	Fire	Flood	Detail
85006	Plantation By The Sea Condo			0	4.30	4	2	N	AE	Wastewater Facility
85006	Ocean Harbour Condominium			0	13.14	4	4	N	X500	Wastewater Facility
85006	Marker 88 Restaurant STP			0	4.78	4	2	N	AE	Wastewater Facility
85006	Summer Sea Condominium			0	5.10	4	2	N	AE	Wastewater Facility
85006	Futura Yacht Club			0	9.77	4	4	N	X	Wastewater Facility
85006	Coral Harbor Club			0	9.53	4	4	N	X500	Wastewater Facility
85006	Plantation Key Government Complex			0	8.53	4	4	N	AE	Wastewater Facility
85006	Roth Building			0	5.54	4	2	N	AE	Wastewater Facility
85006	Plantation Key Elementary School			0	8.47	4	2	Y	AE	Wastewater Facility
85006	Coral Shores Coin Laundry			0	6.31	4	2	N	AE	Wastewater Facility
85006	Turek Building			0	4.06	4	1	N	AE	Wastewater Facility
85006	Tavernier Harbor House WWTF			0	1.88	4	1	N	AE	Wastewater Facility
85006	Sea Gulls Condominium			0	3.34	4	1	N	AE	Wastewater Facility
85006	Tropic Vista Motel			0	4.73	4	1	N	AE	Wastewater Facility
85006	Tavernier Towne Shopping Center			0	7.51	4	3	Y	AE	Wastewater Facility
85006	Mariners Hospital			0	5.73	4	3	Y	AE	Wastewater Facility
85006	Harbour 92 Condominium			0	3.17	4	1	N	AE	Wastewater Facility
85006	Green Turtle Inn STP			0	9.34	4	4	N	X	Wastewater Facility
85006	Tracker Marine WWTF			0	7.87	4	4	N	AE	Wastewater Facility
85006	Morada Bay Restaurant STP			0	7.55	4	4	N	AE	Wastewater Facility
85006	Steve's Timeout Barbeque			0	8.53	4	4	N	X500	Wastewater Facility
85006	Islamorada Bakery - Restaurant			0	9.65	4	4	N	AE	Wastewater Facility
85006	Koulangatta R O Plant			0	3.67	4	2	N	AE	Wastewater Facility

Facility Type	Name	Address	City	Zip	DEM Elev	Evac Zone	Surge	Fire	Flood	Detail
85006	Woody's Cocktail Lounge			0	5.08	4	3	N	AE	Wastewater Facility
85006	Cheeca Lodge			0	3.35	4	2	N	AE	Wastewater Facility
85006	Squid Row Restaurant			0	7.79	4	4	N	X500	Wastewater Facility
85006	Ocean Reef Club			0	0.00	4	0	N	VE	Wastewater Facility
85006	Lorelei Restaurant			0	4.94	4	2	N	AE	Wastewater Facility
85006	Sunset Inn Resort			0	6.44	4	3	N	AE	Wastewater Facility
85006	Gusto's			0	6.48	4	3	N	AE	Wastewater Facility
85006	Islamorada Laundry			0	3.70	4	2	N	AE	Wastewater Facility
85006	Coral Grill Restaurant			0	6.90	4	3	N	AE	Wastewater Facility
85006	Days Inn Of Islamorada			0	1.61	4	1	N	AE	Wastewater Facility
85006	Bentley's Restaurant			0	3.33	4	2	N	AE	Wastewater Facility
85006	Pelican Palms Trailer Park			0	2.73	4	1	N	AE	Wastewater Facility
85006	Beacon Reef Condominium			0	3.93	4	2	N	AE	Wastewater Facility
85006	Chesapeake Of Whale Harbor			0	3.59	4	2	N	AE	Wastewater Facility
88012	W16CA		BIG PINE		1.66	2	1	N	AE	Television
88012	W55AM		BIG PINE		1.66	2	1	N	AE	Television
88012	W57AM		BIG PINE KEY		3.02	2	1	Y	AE	Television
88012	W47AC		BIG PINE KEY		3.02	2	1	Y	AE	Television
88012	W48DE		ISLAMORADA		3.67	4	2	N	AE	Television
88012	WDLP-TV		KEY WEST		8.17	1	5	N	X	Television
88012	W05CJ		KEY WEST		7.02	1	3	N	X	Television
88012	W05CJ		KEY WEST		8.17	1	5	N	X	Television
88012	W10CQ		KEY WEST		7.02	1	3	N	X	Television
88012	W10CQ		KEY WEST		8.17	1	5	N	X	Television
88012	W05CL		KEY WEST		4.18	2	2	N	AE	Television
88012	W69EI		KEY WEST		10.52	1	0	N	X	Television
88012	W19CV		KEY WEST		8.45	1	5	N	X	Television
88012	W44AC		KEY WEST		8.17	1	5	N	X	Television
88012	W39AC		KEY WEST		8.17	1	5	N	X	Television
88012	WKIZ-LP		KEY WEST		0.00	1	0	N	AE	Television

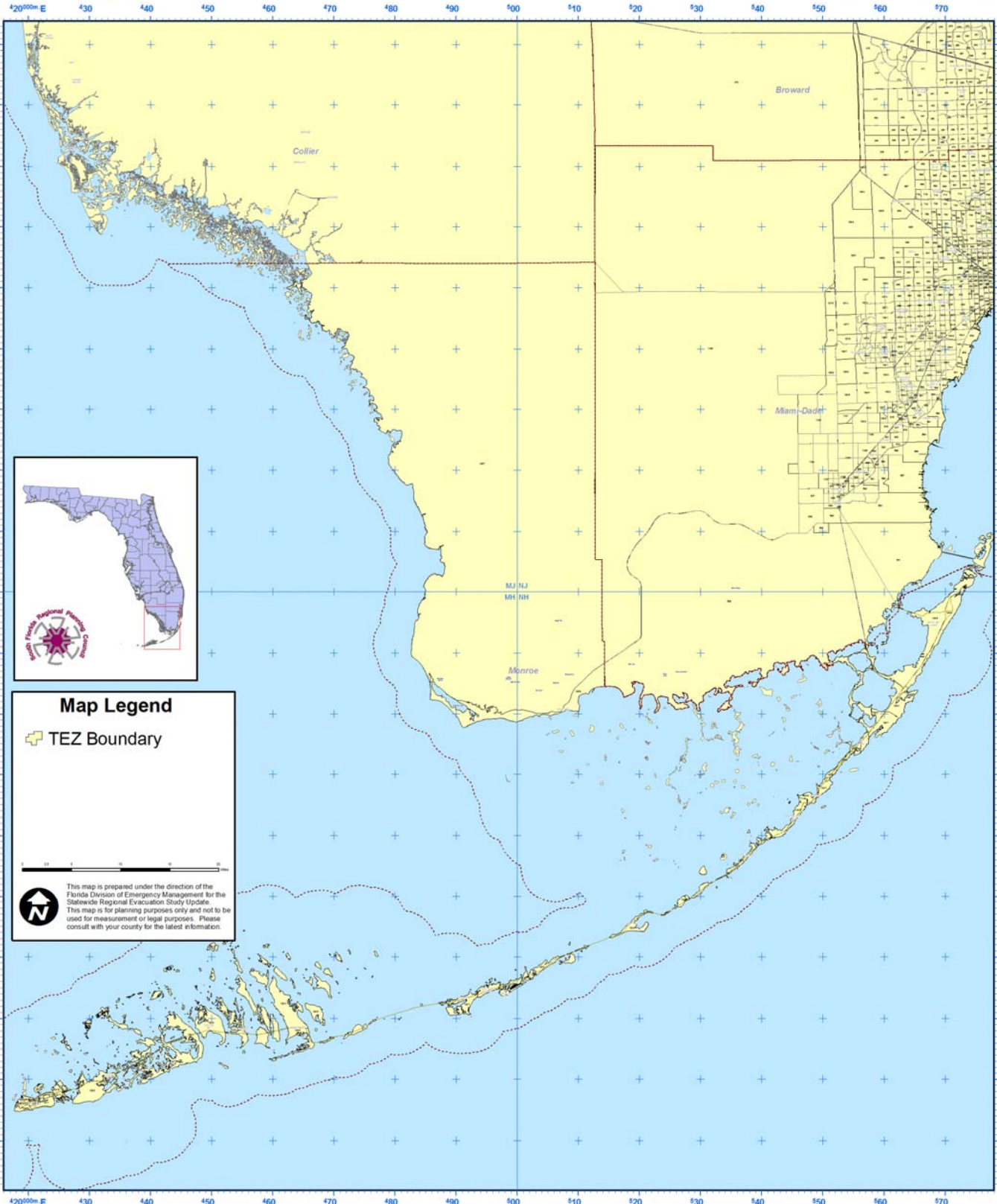


Facility Type	Name	Address	City	Zip	DEM Elev	Evac Zone	Surge	Fire	Flood	Detail
88012	W31AB		KEY WEST		0.95	1	1	N	VE	Television
88012	WCAY-LP		KEY WEST		2.62	1	1	N	AE	Television
88012	WGZT-LP		KEY WEST		7.06	1	3	N	X	Television
88012	WGEN-TV		KEY WEST		4.72	1	3	N	AE	Television
88012	WGEN-TV		KEY WEST		8.57	1	5	N	X	Television
88012	WGEN-TV		KEY WEST		8.57	1	5	N	X	Television
88012	W29CW		MARATHON		4.14	3	2	N	AE	Television
88012	W29CW		MARATHON		-1.06	4	1	Y	AE	Television
88012	W64CX		MARATHON		2.85	3	2	N	AE	Television
88012	W48DA		MARATHON		2.85	3	2	N	AE	Television
88012	W38AA		MARATHON		3.17	3	2	N	AE	Television
88012	W65AP		MARATHON		3.17	3	2	N	AE	Television
88012	W65AP		MARATHON		1.33	3	1	N	AE	Television
88012	W63AL		MARATHON		3.17	3	2	N	AE	Television
88012	W40AA		MATECUMBE		8.74	4	4	N	AE	Television
88012	W27AY		MATECUMBE		3.67	4	2	N	AE	Television
88012	W43AD		MATECUMBE		8.74	4	4	N	AE	Television
88012	W64AN		ROCK HARBOR		9.57	4	3	N	X	Television
88012	W54BB		ROCK HARBOR		9.57	4	3	N	X	Television
88012	W28CP		SUMMERLAND KEY		2.39	2	1	N	AE	Television

This page intentionally left blank.

# Monroe County

## Map IVC-1 Traffic Evacuation Zones

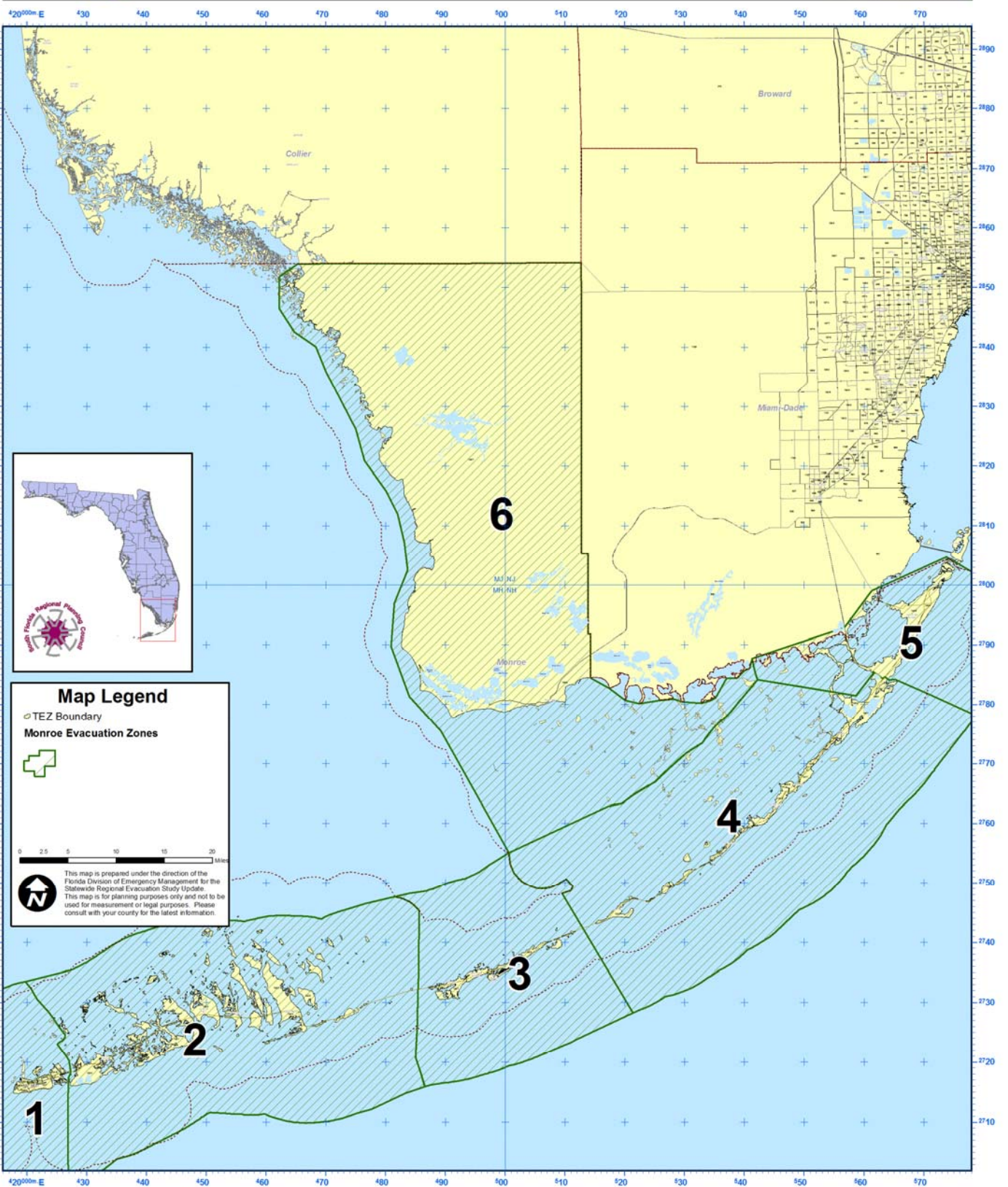


Sources: FDEM, FDoH, Miami-Dade, Broward and Monroe Counties, SFRPC.

Print Date: Monday, December 06, 2010

# Monroe County

## Map IVC-2 Hurricane Evacuation Zones with Traffic Evacuation Areas

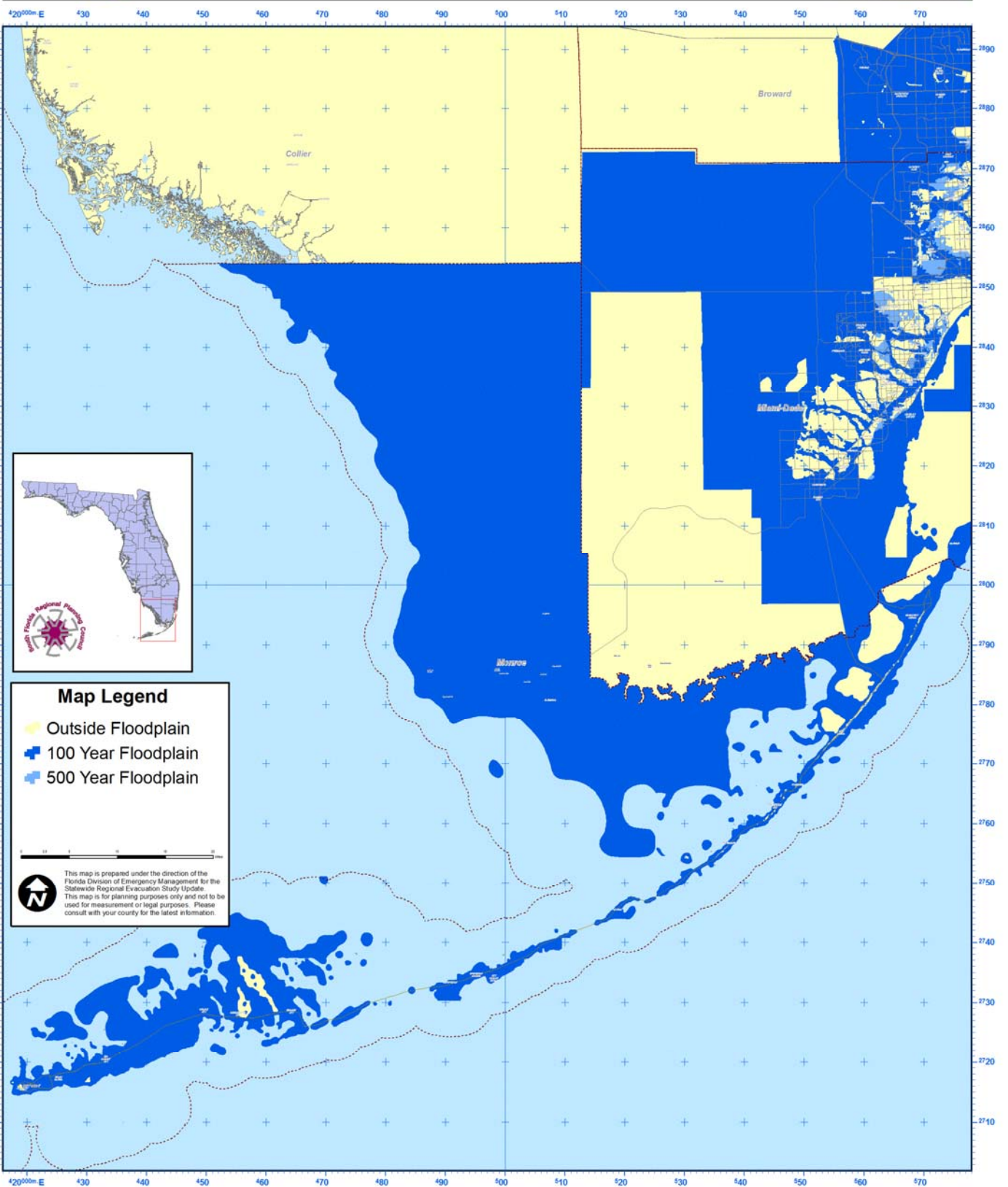


Sources: FDEM, FDOH, Miami-Dade, Broward and Monroe Counties, SFRPC.

Print Date: Tuesday, December 07, 2010

# Monroe County

## Map IVC-3 FEMA FIRM Floodplains



**Map Legend**

- Outside Floodplain
- 100 Year Floodplain
- 500 Year Floodplain

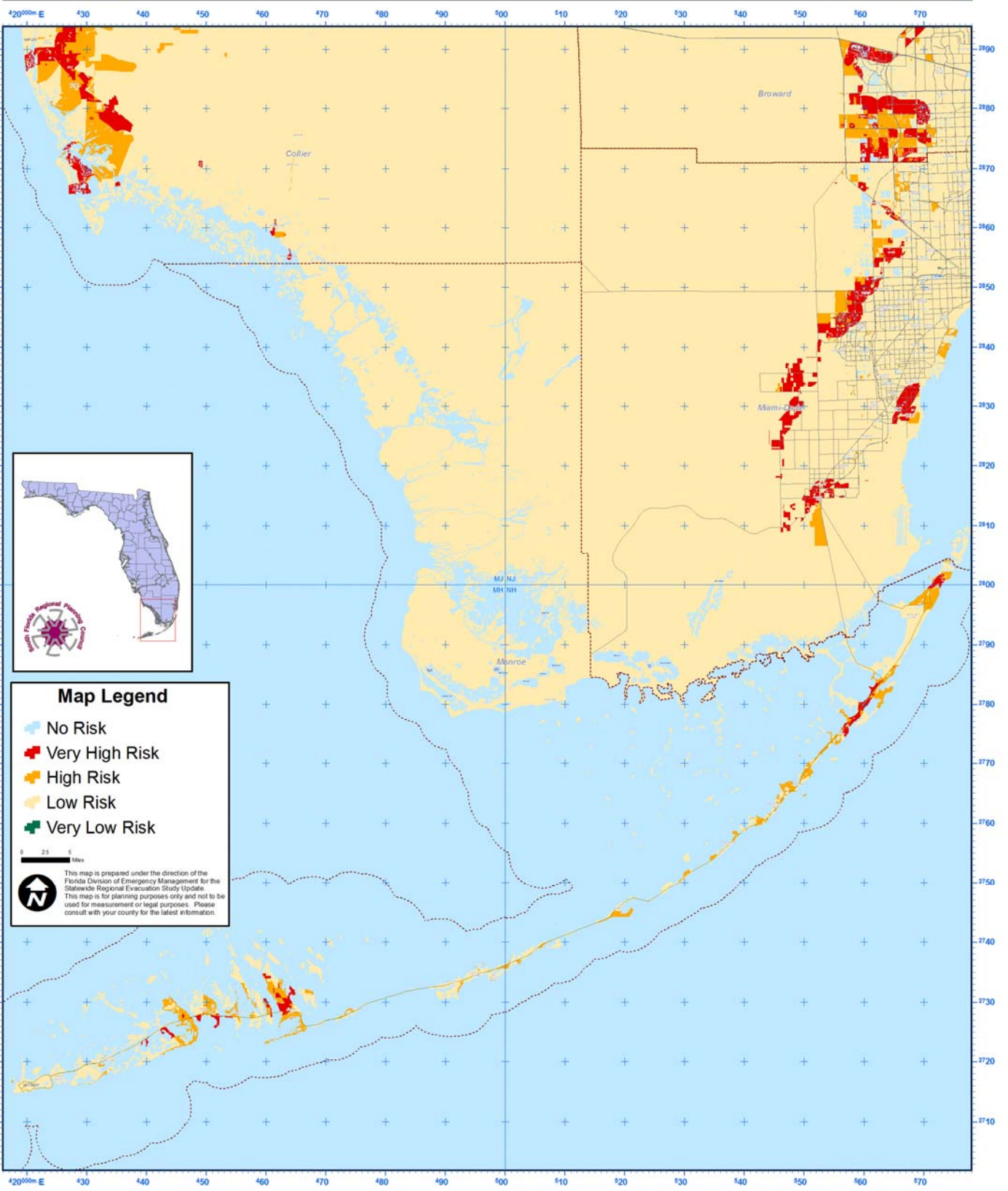
This map is prepared under the direction of the Florida Division of Emergency Management for the Statewide Regional Evacuation Study Update. This map is for planning purposes only and not to be used for measurement or legal purposes. Please consult with your county for the latest information.

Sources: FDEM, FDoH, Miami-Dade, Broward and Monroe Counties, SFRPC.

Print Date: Monday, December 06, 2010

# Monroe County

## Map IVC-4 Wildland-Urban Interface Fire Risk

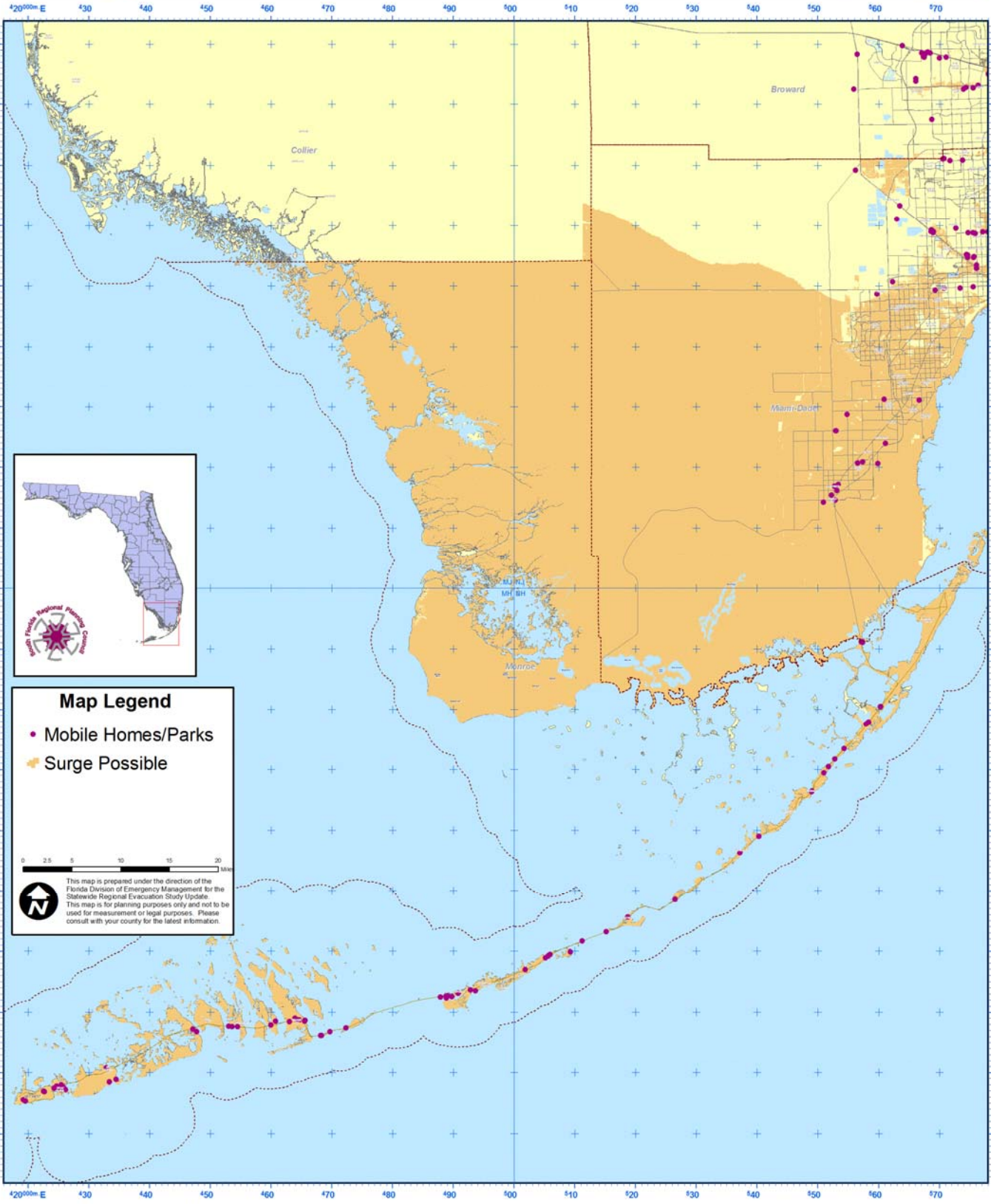


Sources: FDEM, FDoH, Miami-Dade, Broward and Monroe Counties, SFRPC.

Print Date: Monday, December 06, 2010

# Monroe County

## Map IVC-5 Mobile Homes/Parks/RVs

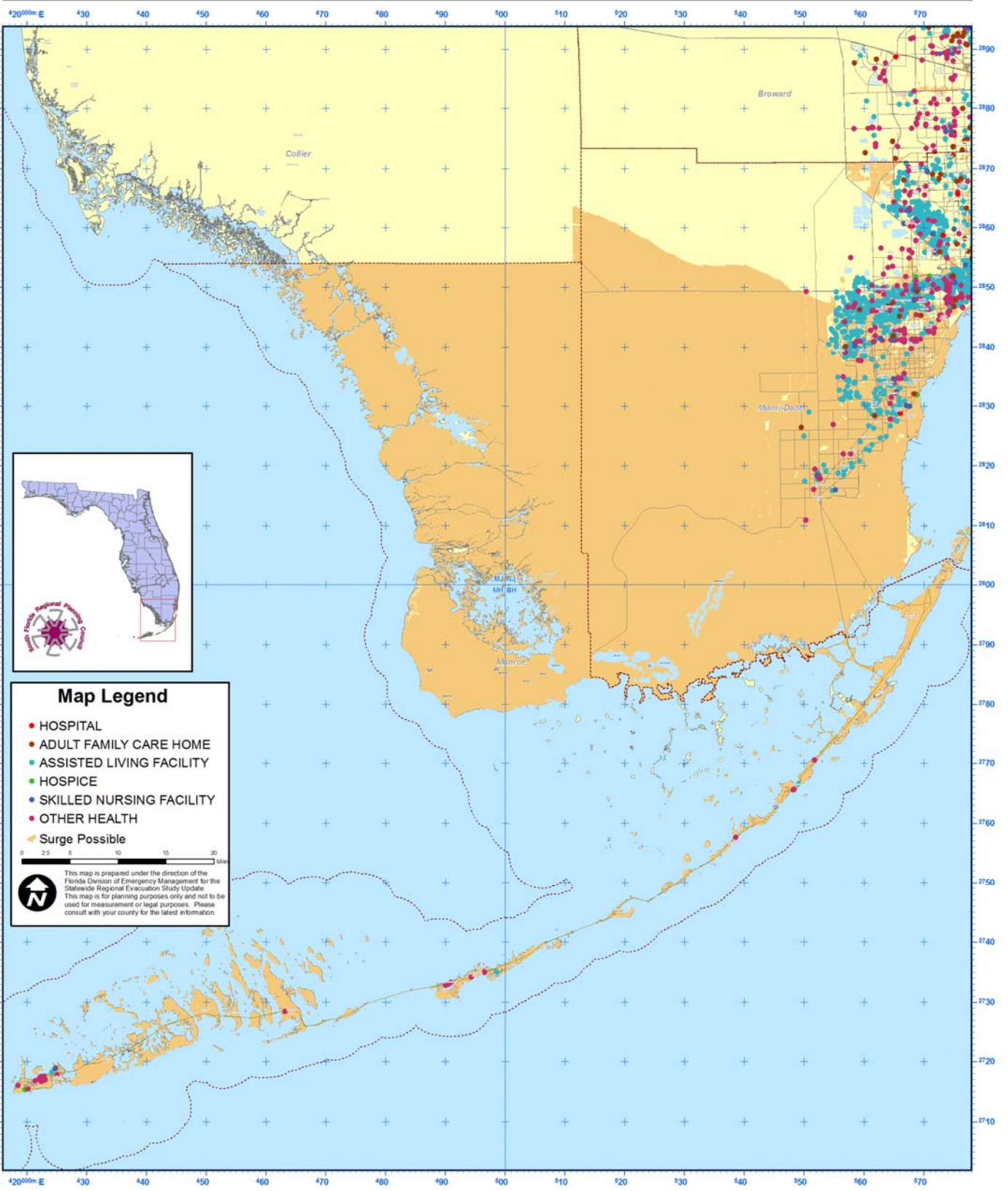


Sources: FDEM, FDoH, Miami-Dade, Broward and Monroe Counties, SFRPC.

Print Date: Tuesday, December 07, 2010

# Monroe County

## Map IVC-6 Health Care Facilities



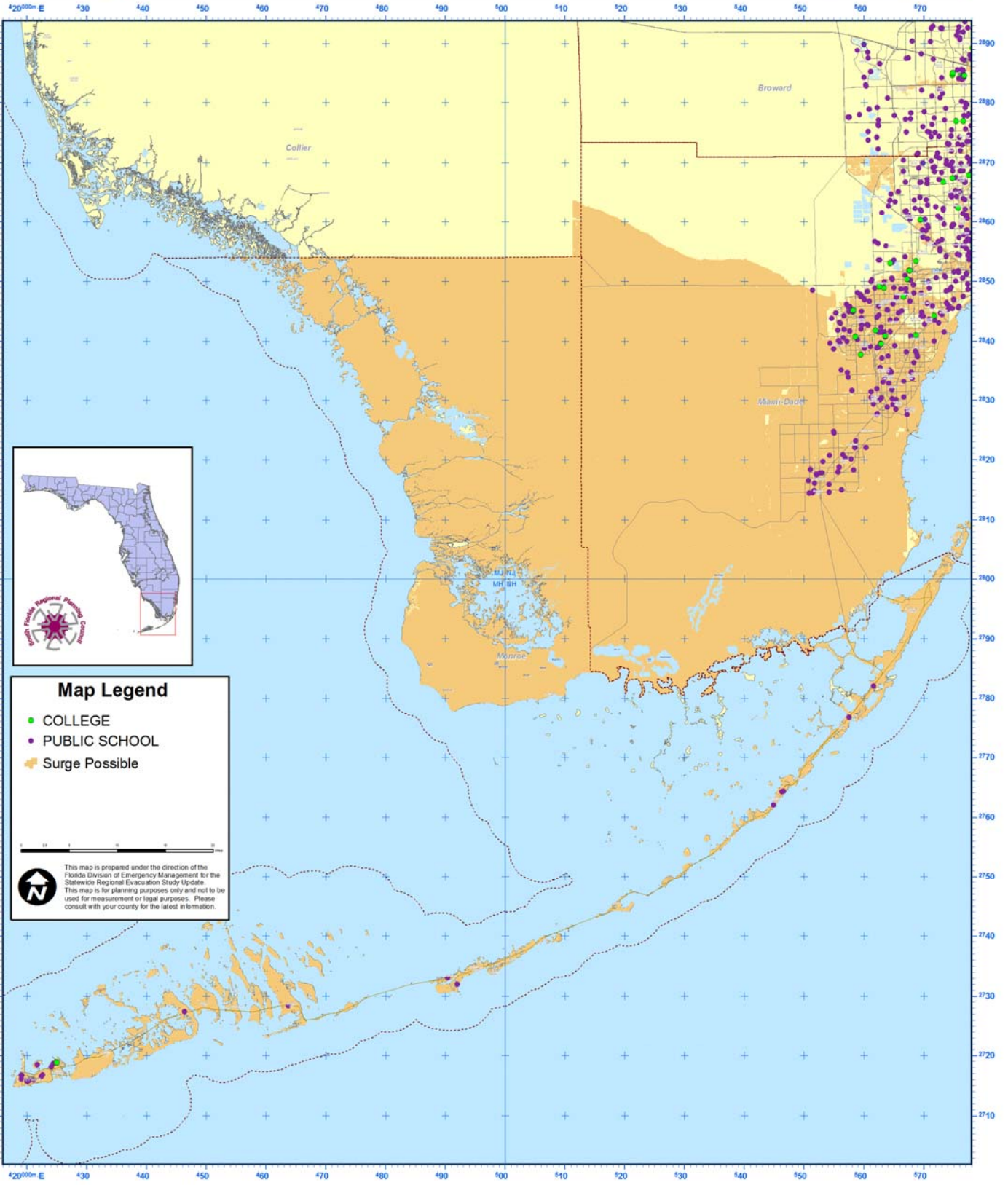
Sources: FDEM, FDoH, Miami-Dade, Broward and Monroe Counties, SFRPC.

Print Date: Tuesday, December 07, 2010



# Monroe County

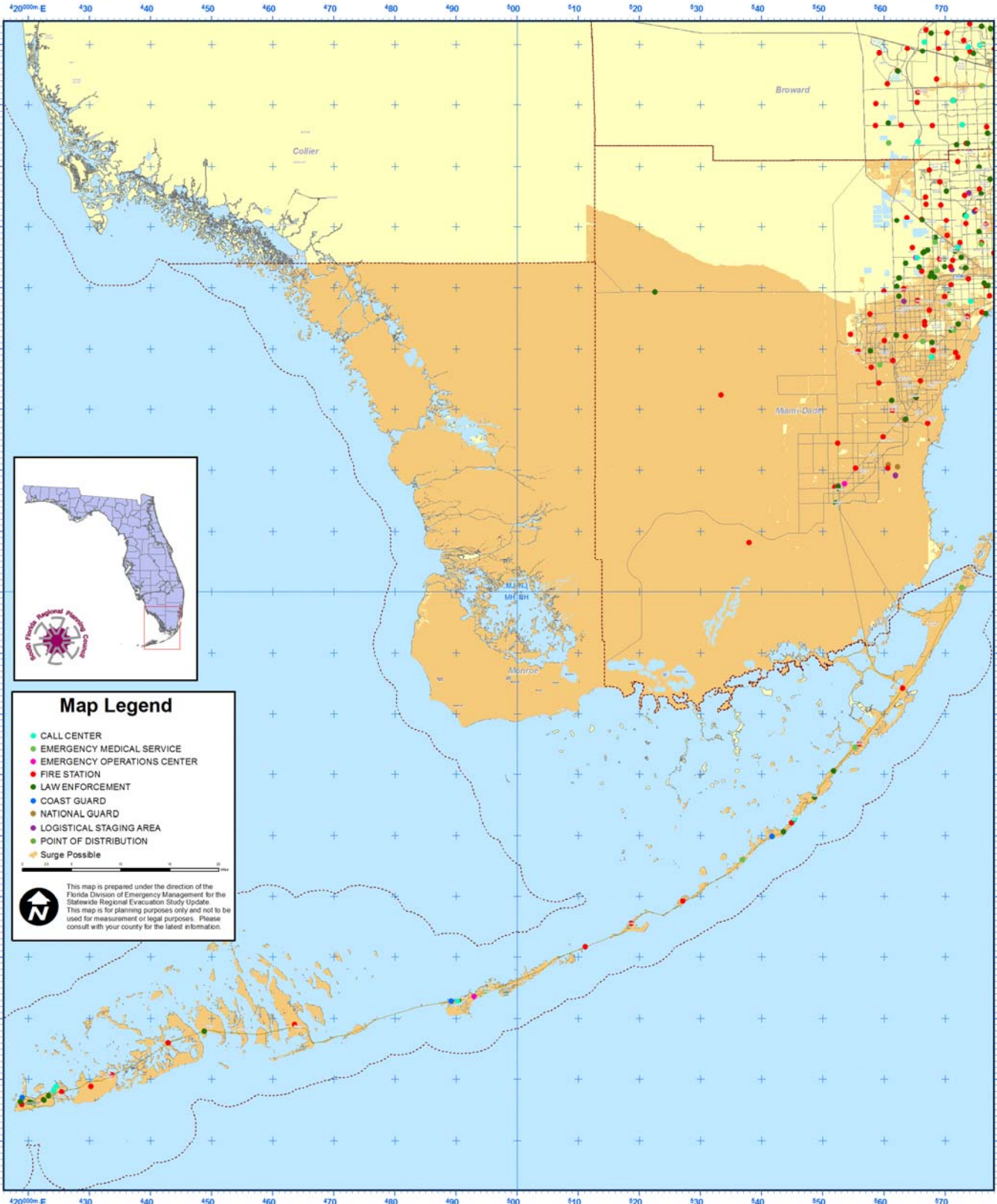
## Map IVC-7 Schools and Universities



Sources: FDEM, FDoH, Miami-Dade, Broward and Monroe Counties, SFRPC.

Print Date: Monday, December 06, 2010

**Monroe County**  
**Map IVC-8 EOCs, Logistical and Military Resources, PODs**

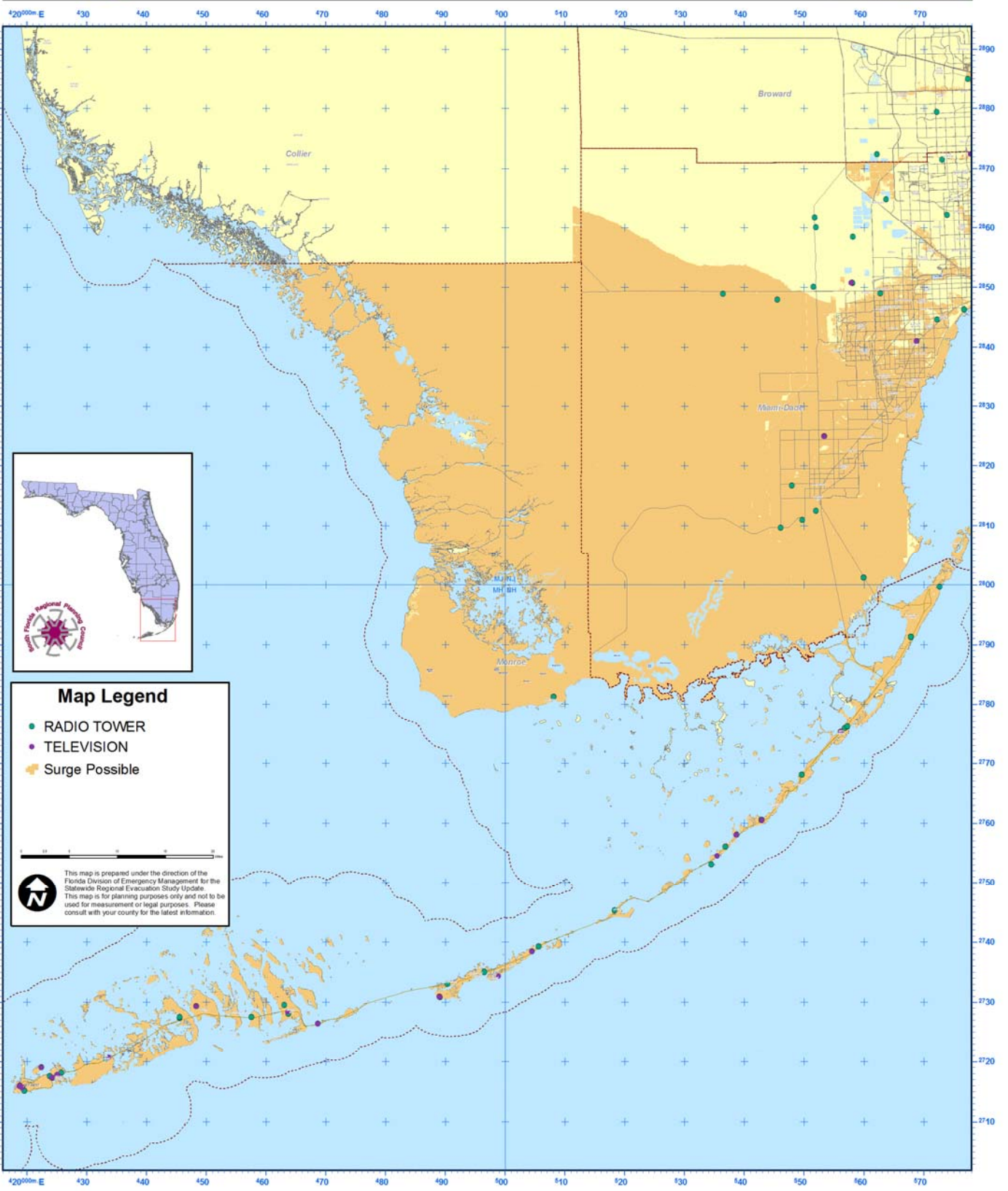


Sources: FDEM, FDoH, Miami-Dade, Broward and Monroe Counties, SFRPC.

Print Date: Monday, December 06, 2010

# Monroe County

## Map IVC-9 Communications Resources

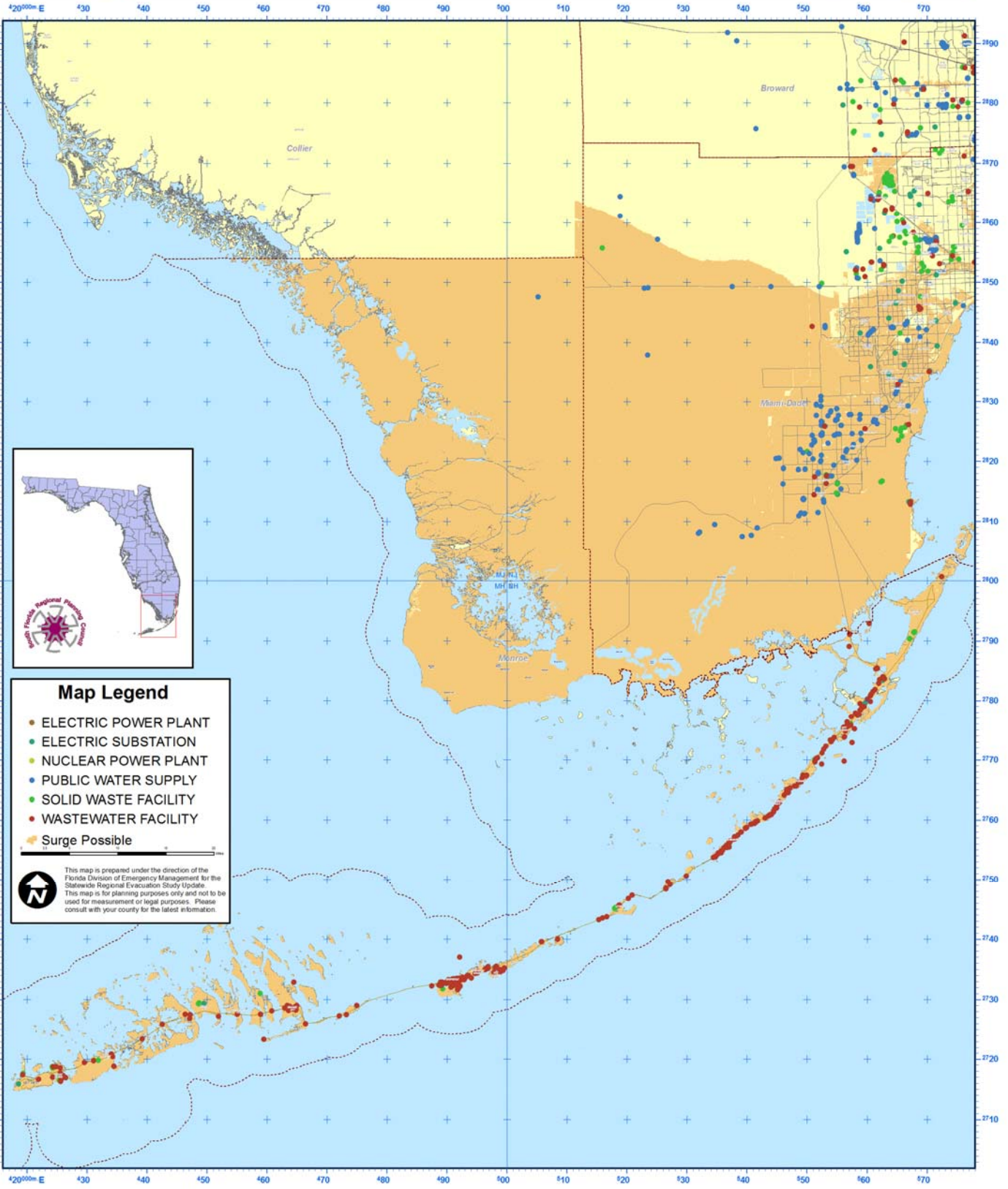


Sources: FDEM, FDoH, Miami-Dade, Broward and Monroe Counties, SFRPC.

Print Date: Monday, December 06, 2010

# Monroe County

## Map IVC-10 Critical Infrastructure (Water, Wastewater, Landfills, etc)

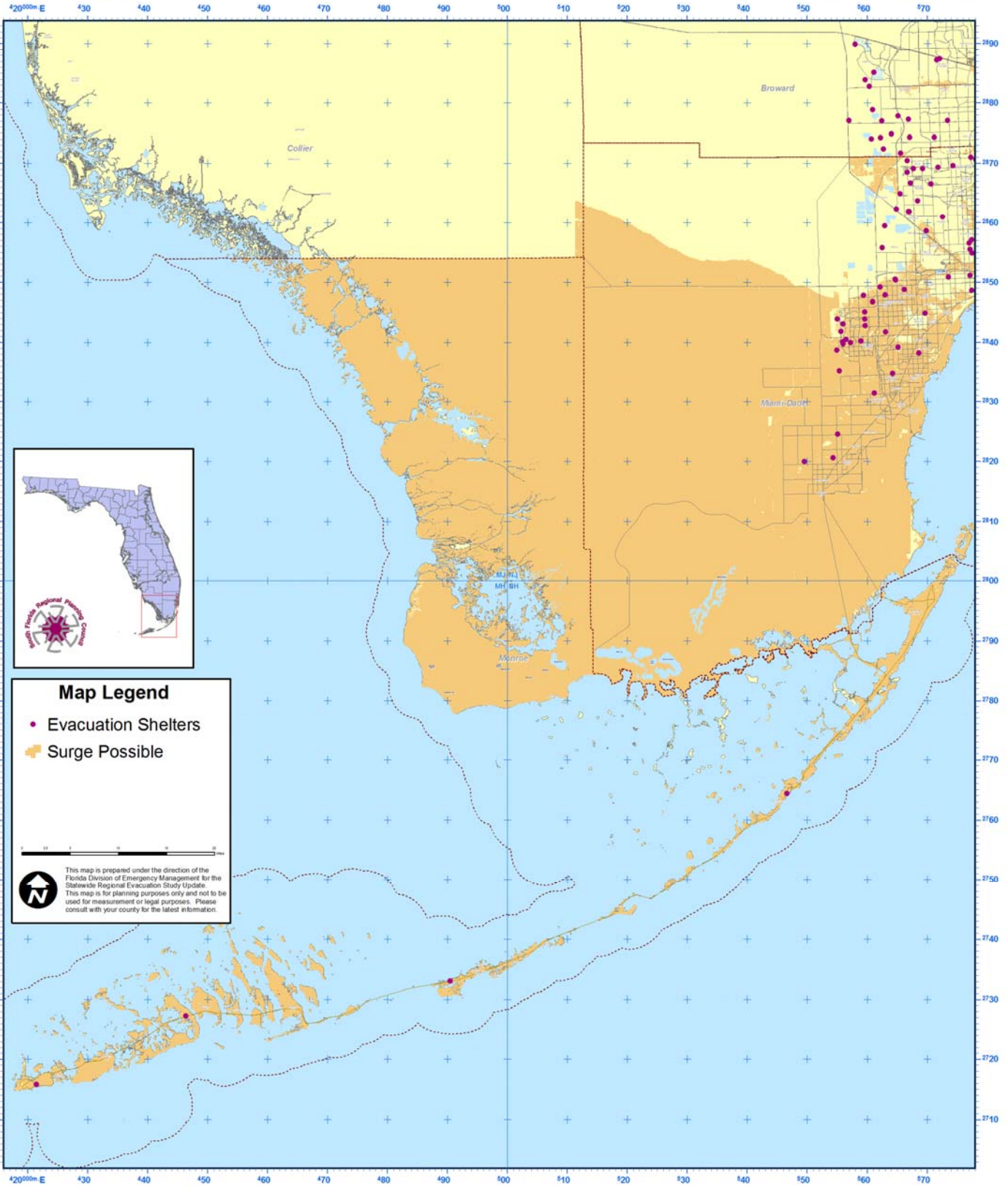


Sources: FDEM, FDoH, Miami-Dade, Broward and Monroe Counties, SFRPC.

Print Date: Monday, December 06, 2010

# Monroe County

## Map IVC-11 Public Evacuation Shelters 2010

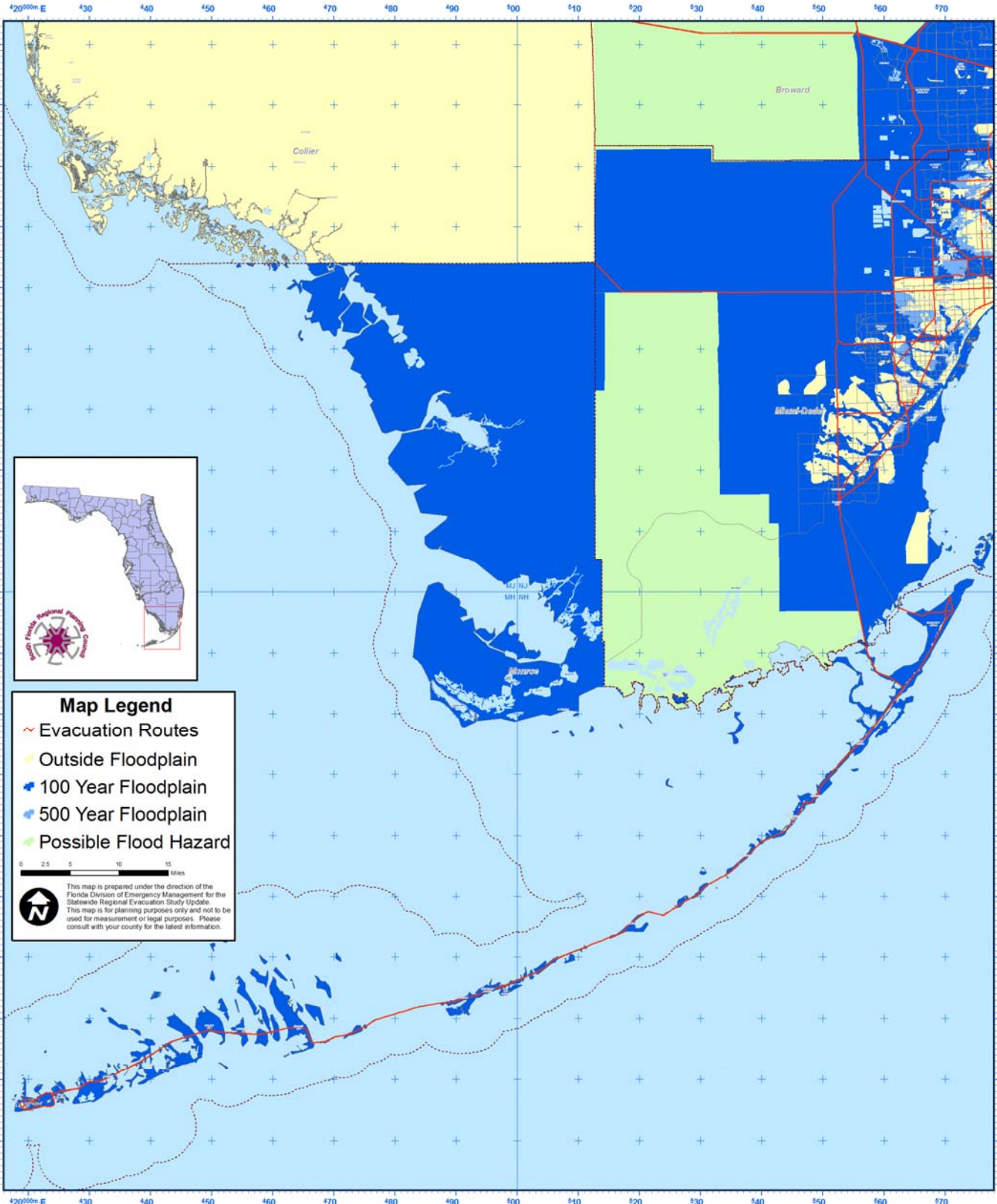


Sources: FDEM, FDoH, Miami-Dade, Broward and Monroe Counties, SFRPC.

Print Date: Monday, December 06, 2010

# Monroe County

## Map IVC-12 Routes Vulnerable to Freshwater Flooding



**Map Legend**

- Evacuation Routes
- Outside Floodplain
- 100 Year Floodplain
- 500 Year Floodplain
- Possible Flood Hazard

0 2.5 5 10 15 Miles

This map is prepared under the direction of the Florida Division of Emergency Management for the Statewide Regional Evacuation Study Update. This map is for planning purposes only and not to be used for measurement or legal purposes. Please consult with your county for the latest information.

Sources: FDEM, FDoH, Miami-Dade, Broward and Monroe Counties, SFRPC.

Print Date: Wednesday, December 08, 2010