

Southwest Florida and Central Florida Progress Report

The vulnerability assessment will focus on the Charlotte Harbor and Peace River. The Peace River empties into Charlotte Harbor and the river runs through areas of Central Florida. This will allow our vulnerability assessment to show impacts for both the SWFRPC and CFRPC regions. The Charlotte Harbor would suffer greatly from sea level rise, making it a great area to focus on in our combined regions.

After having multiple conversations between the two staffs, we have decided to include on infrastructure impacts and critical facilities in the assessment. The NOAA Coastal Flood Exposure Mapper can show critical facilities located within sea level rise scenarios and the Geoplan tool shows both visual and tabular data on inundated roads. We are also considering adding impacts on wetlands or historic areas to the assessment. Both the NOAA Coastal Flood Exposure Mapper and Sea Level Rise Viewer can show wetland inundation. We are also looking for a way to add the NOAA CanVis tool to the assessment. The SWFRPC released its Comprehensive Southwest Florida/Charlotte Harbor Climate Change Vulnerability Assessment in September 2009. We will use this new vulnerability assessment to update and improve upon the old assessment.

We are looking to hold the training in the City of Punta Gorda. They have a facility that is set up to allow participants to follow along with the training on their laptops or tablets. Participants will be able to begin their own vulnerability assessments at the training event and will have the trainers from the CFRPC and SWFRPC available for help. The SWFRPC has done Sea Level Rise work with the City of Punta Gorda before and we believe they will help us get a date at this site for an affordable cost. We are looking to focus the training on the NOAA Coastal Flood Exposure Mapper.

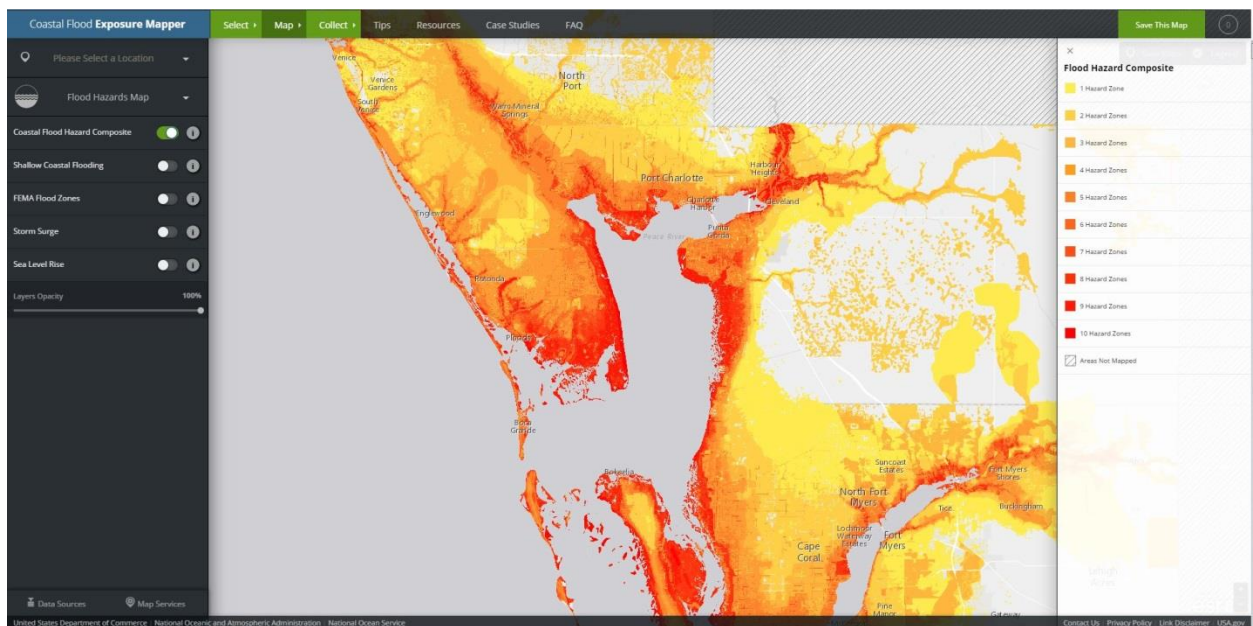


Draft Outline

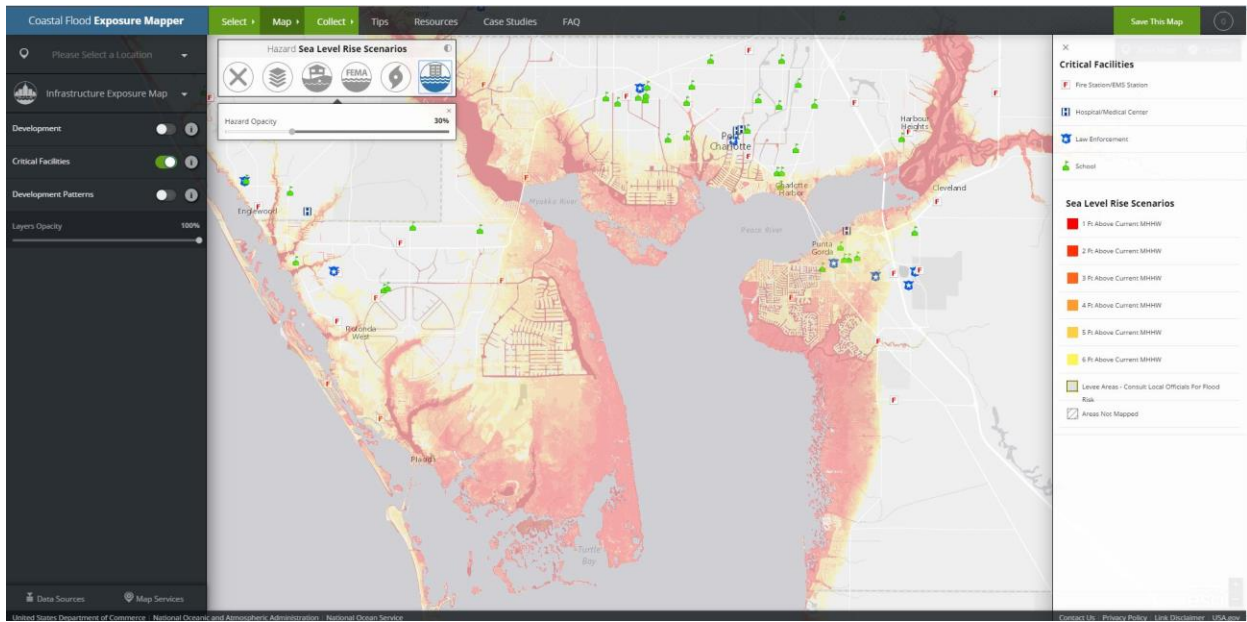
- Study Area Summary.....Page 1
 - Charlotte Harbor and Peace River
- Sea Level Rise History.....Page 2
 - Data Table
- Sea Level Rise Projections.....Page 3
 - Maps from Geoplan tool showing best and worst case scenarios
 - Data Table
- Infrastructural Impacts.....Page 5
 - I-75 and US-41 Inundation map and tables from Geoplan tool
- Critical Facilities.....Page 7
 - Map from NOAA Coastal Flood Exposure Mapper
 - List of affected critical facilities
- Wetland Inundation.....Page 9
 - Map from NOAA Coastal Flood Exposure Mapper
 - Graph/chart of wetland impacts

Map Screenshots

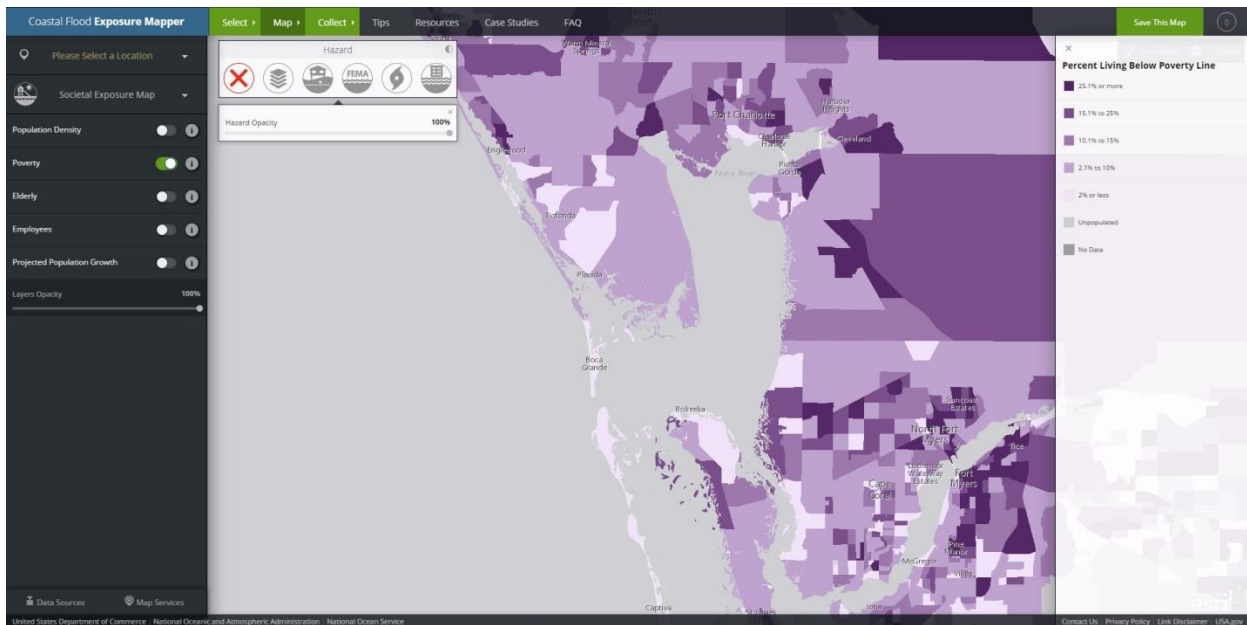
Map 1



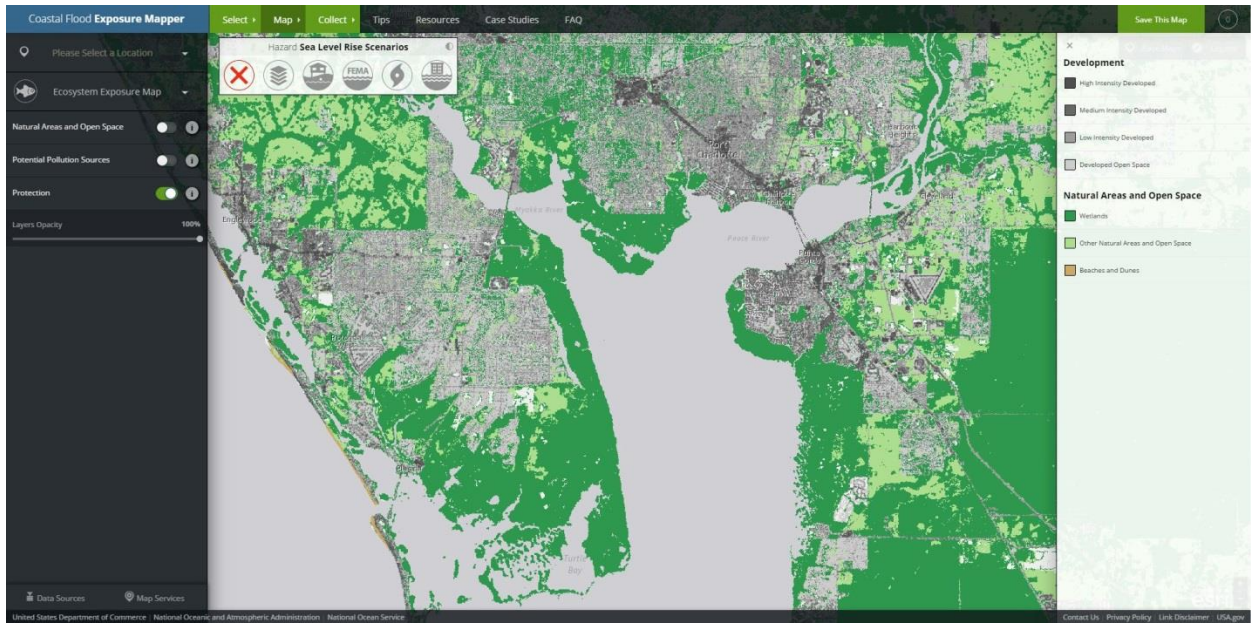
Map 2



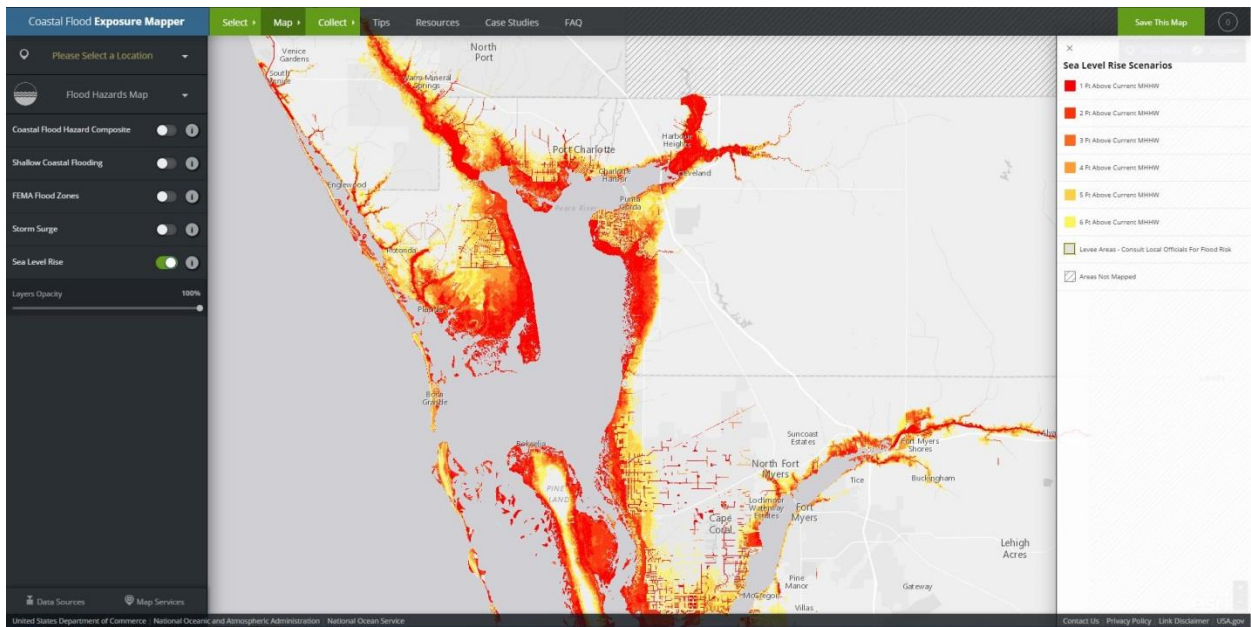
Map 3



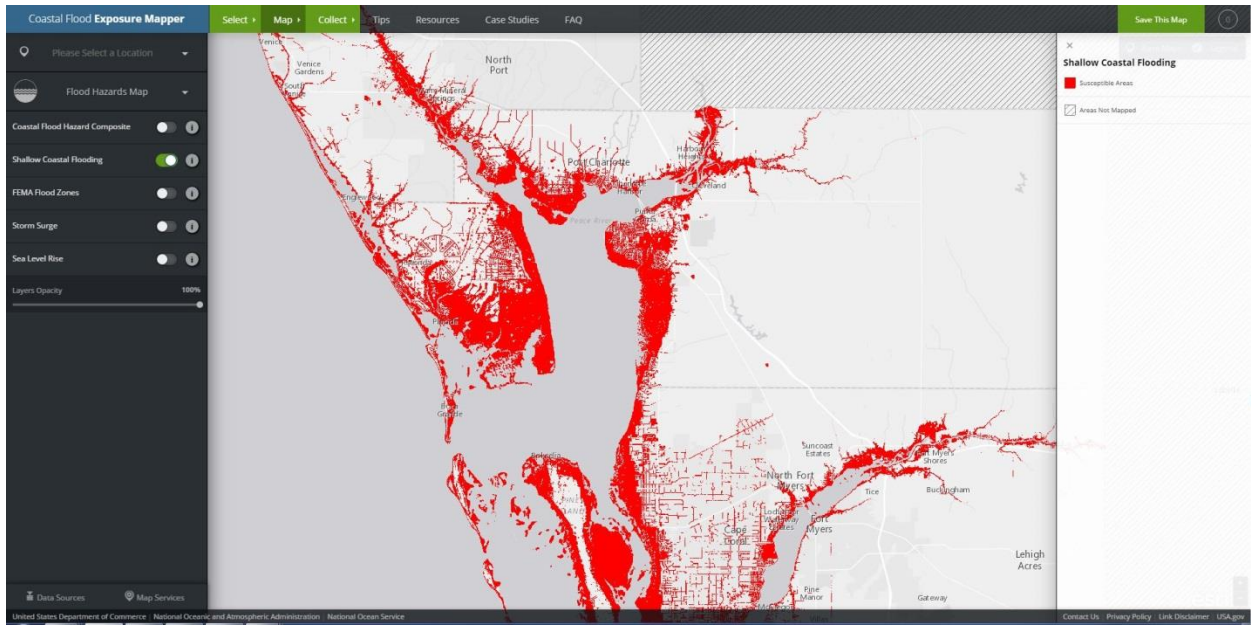
Map 4



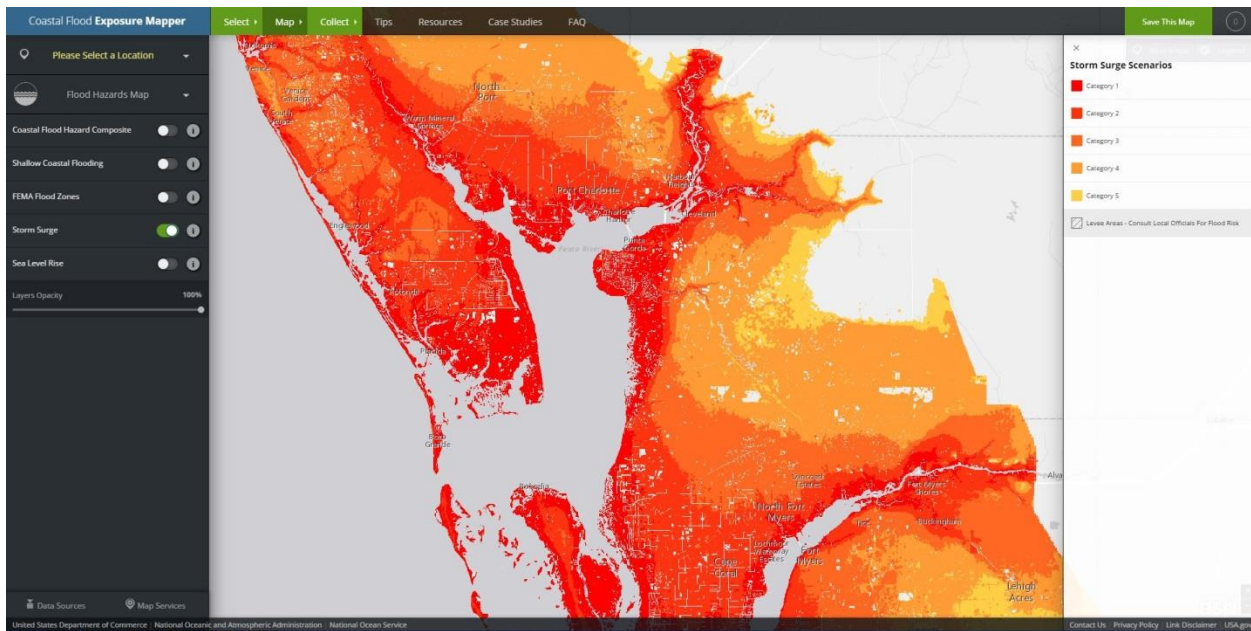
Map 5



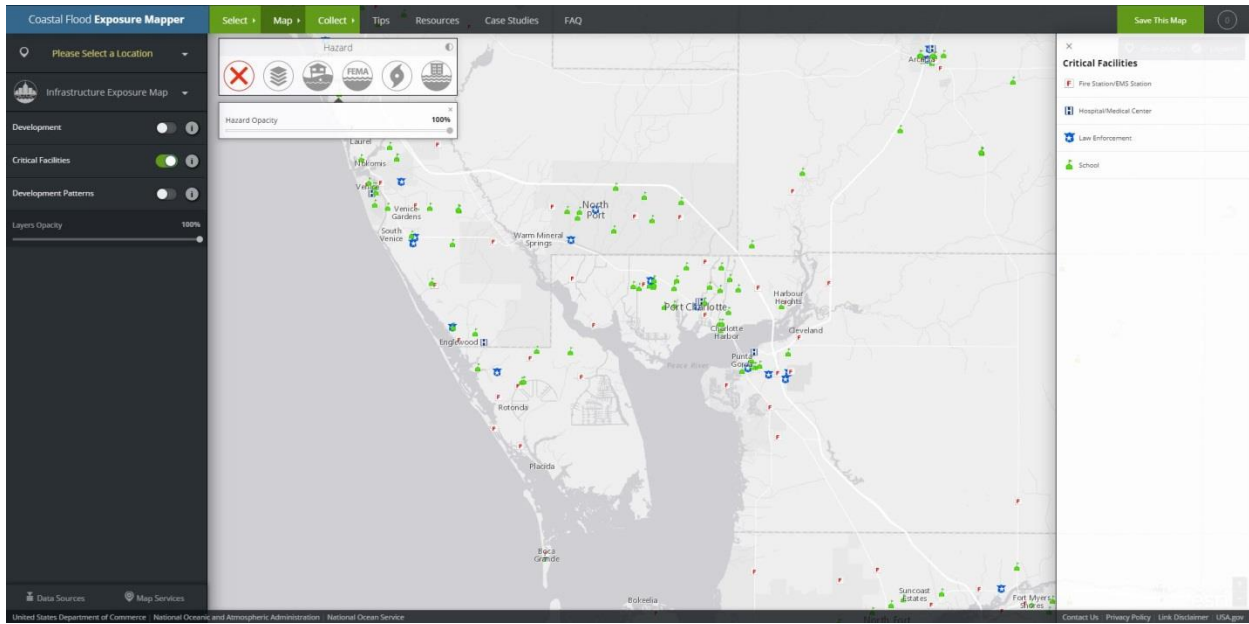
Map 6



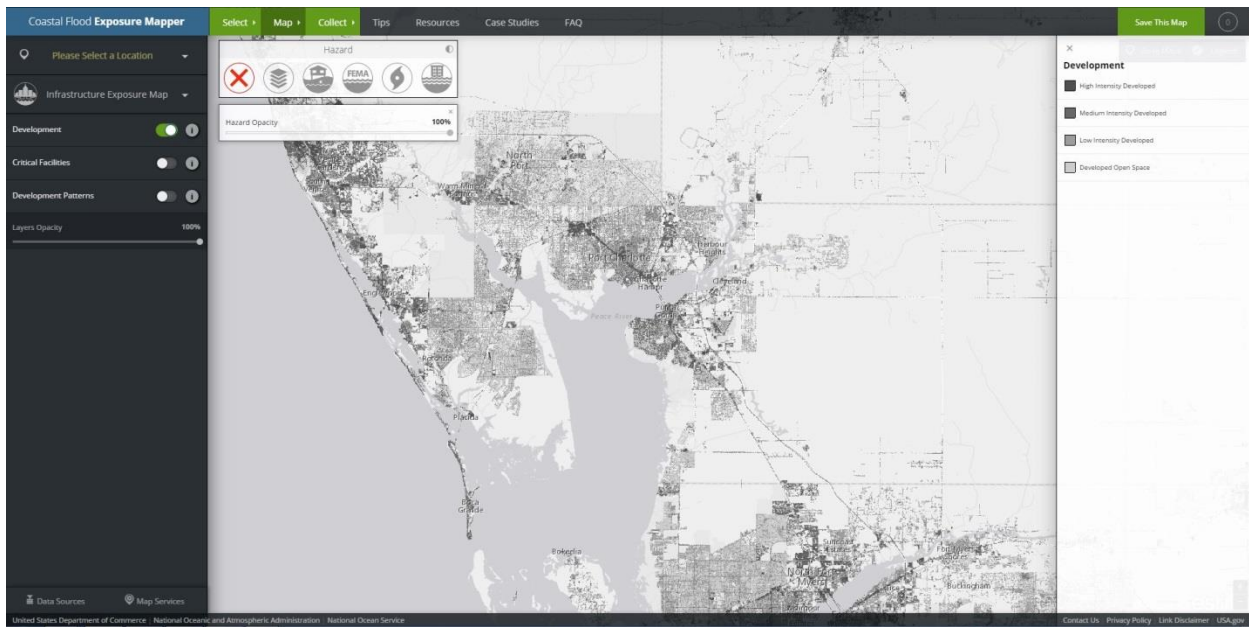
Map 7



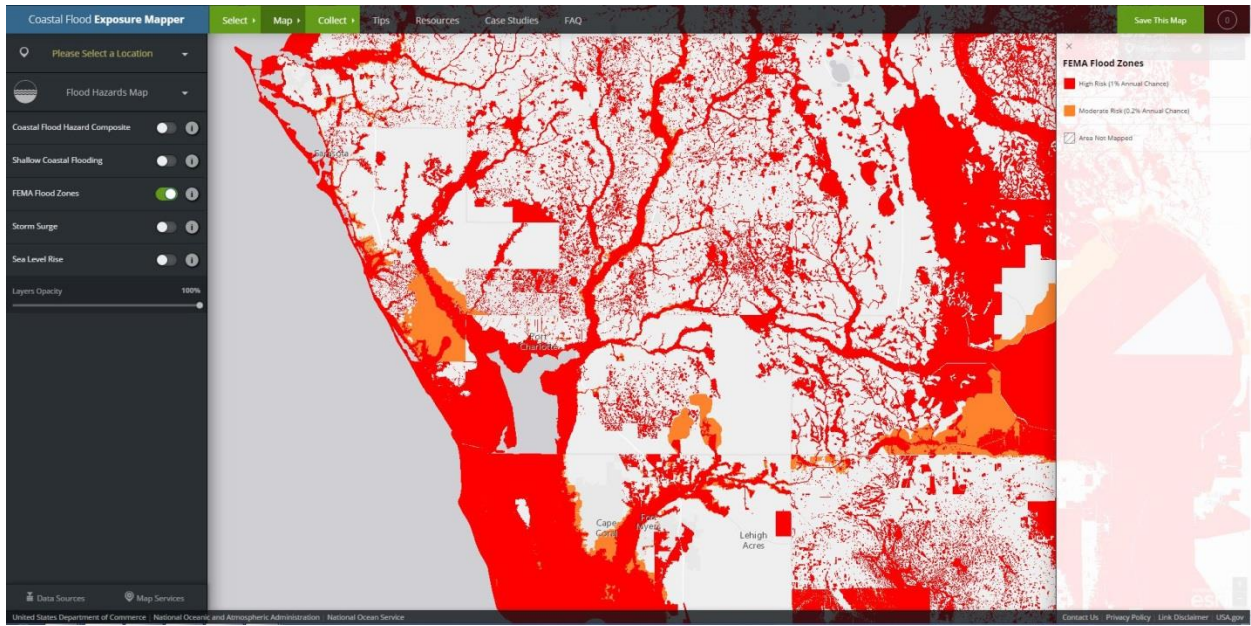
Map 8



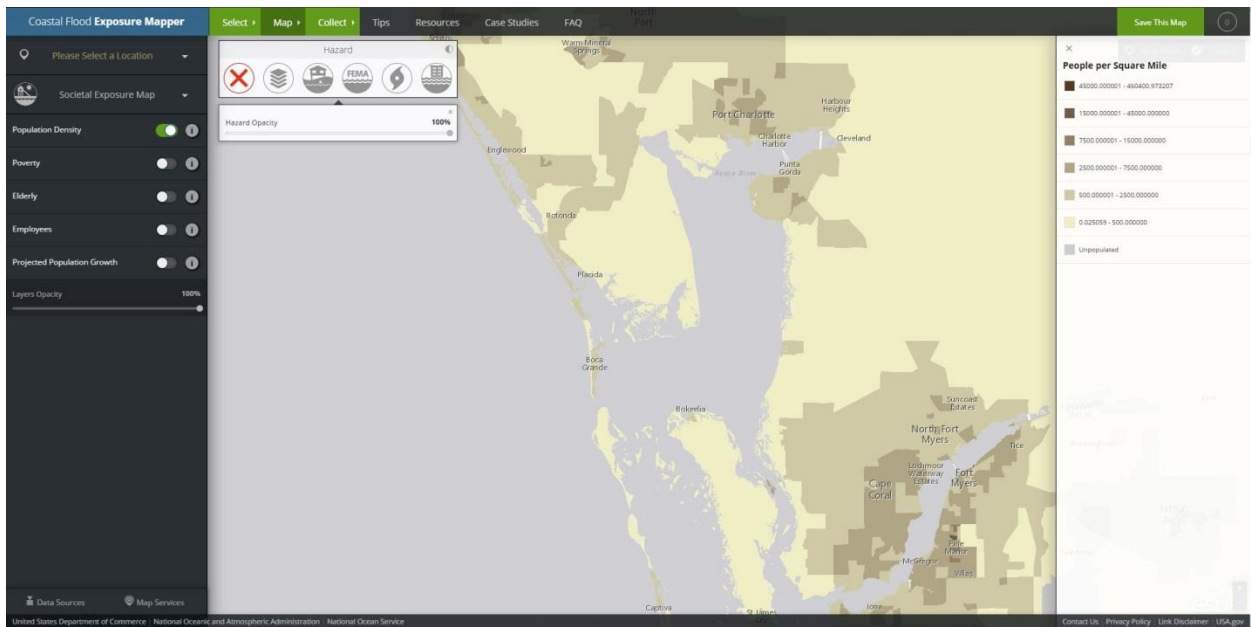
Map 9



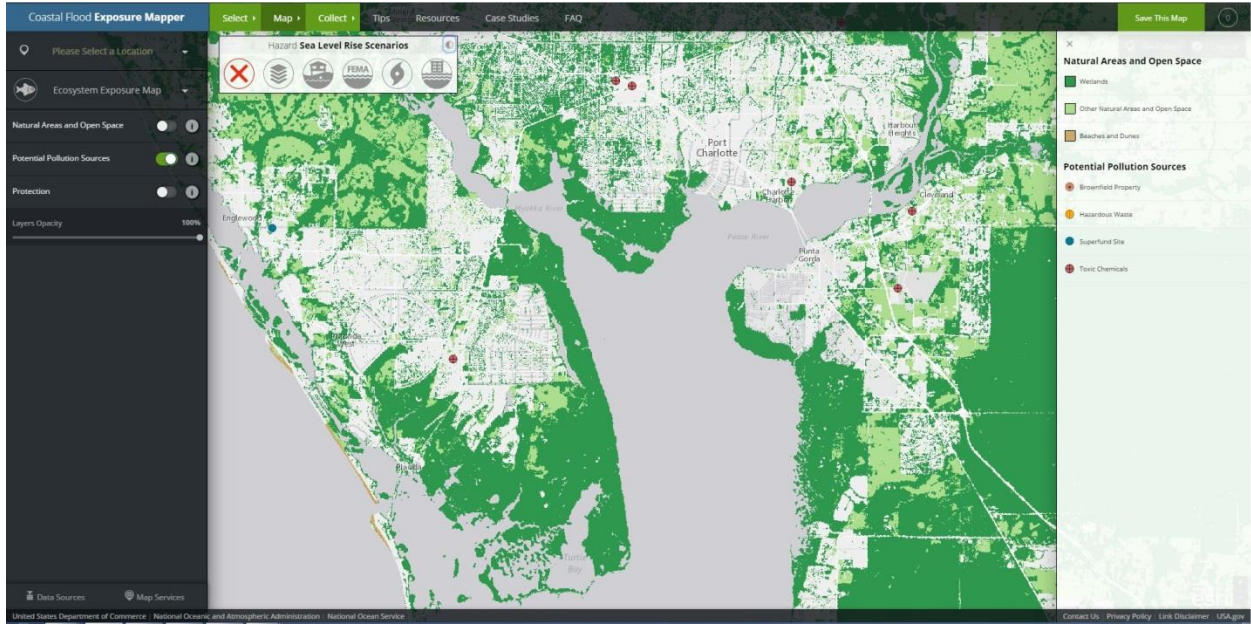
Map 10



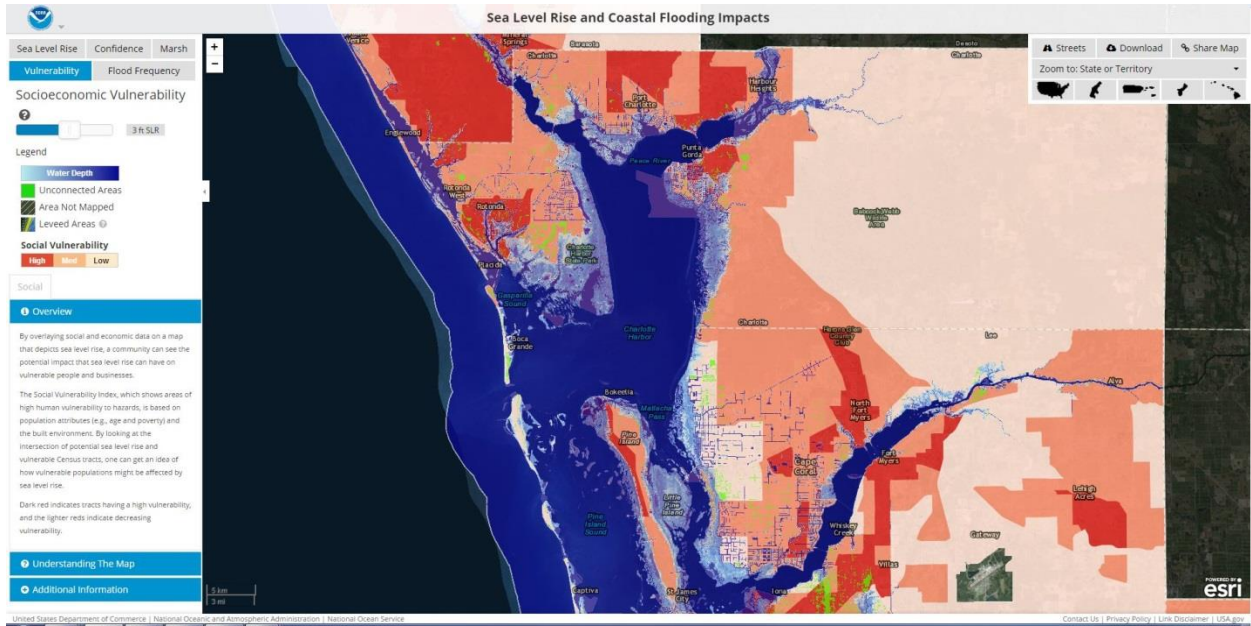
Map 11



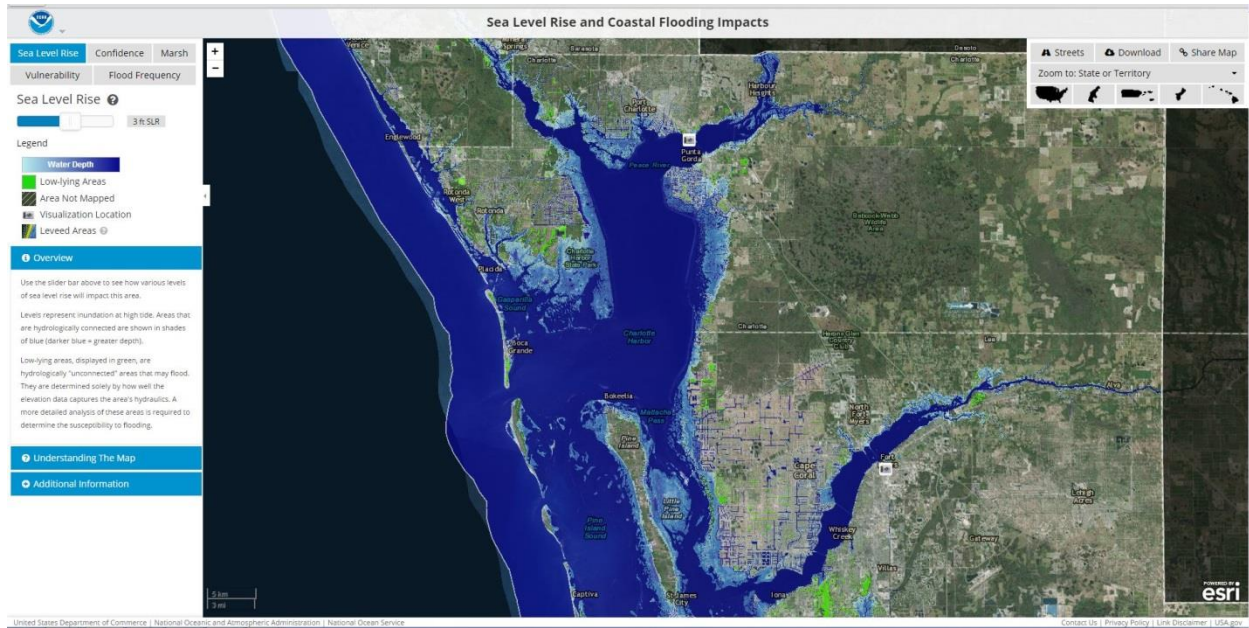
Map 12



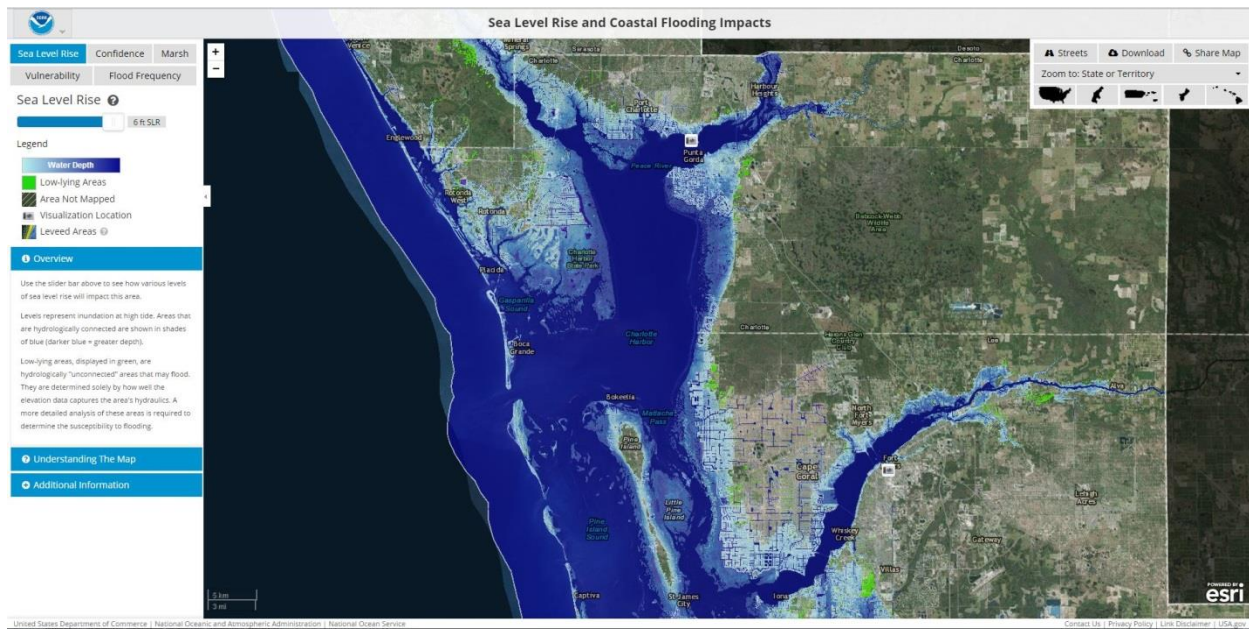
Map 13



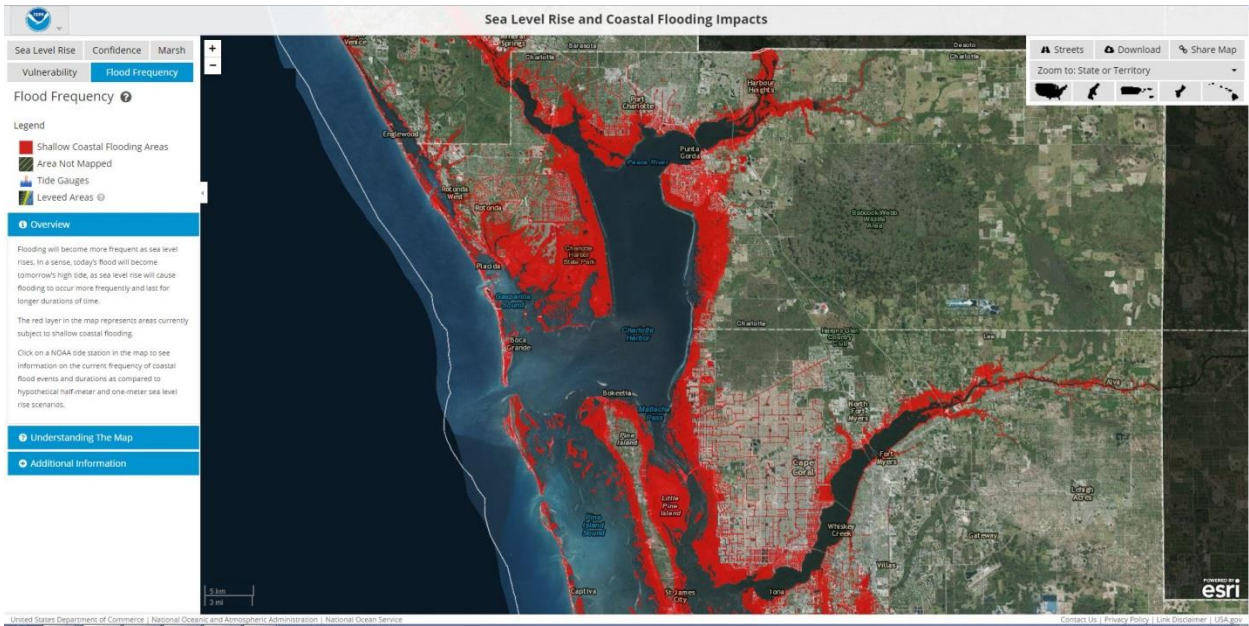
Map 14



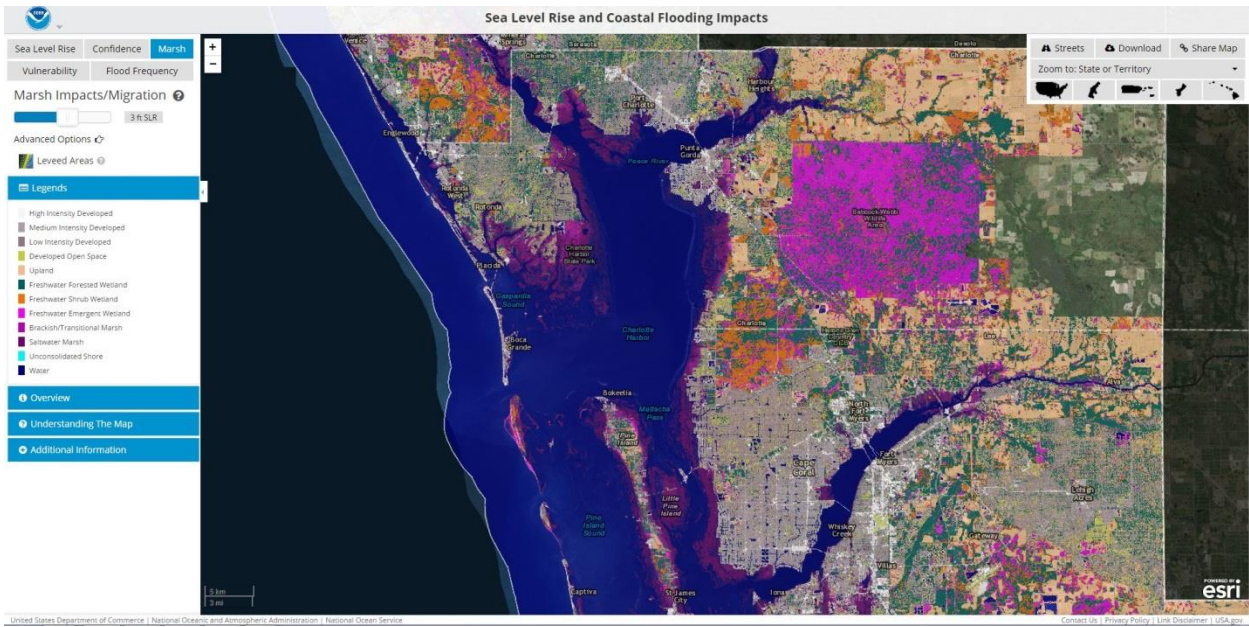
Map 15



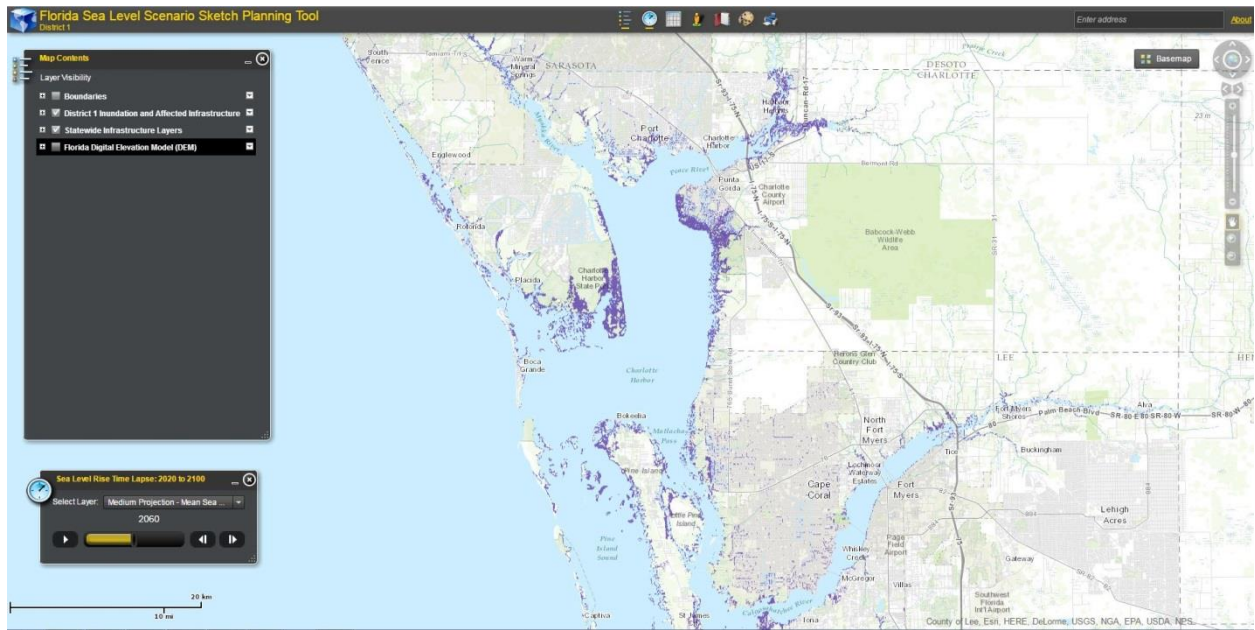
Map 16



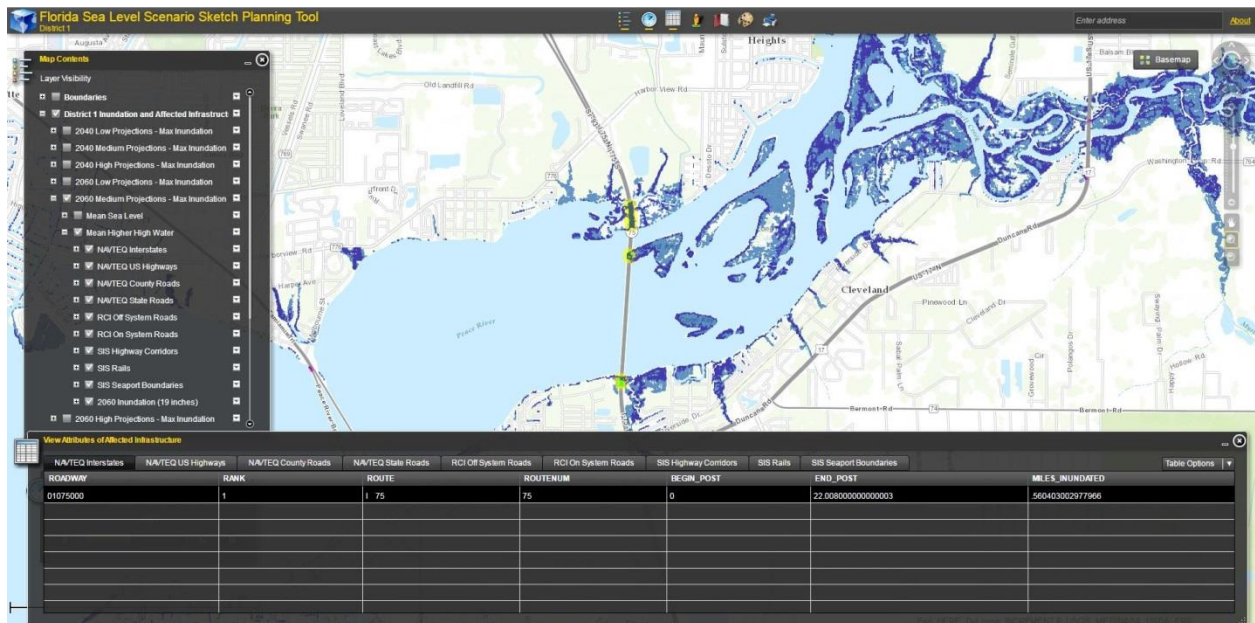
Map 17



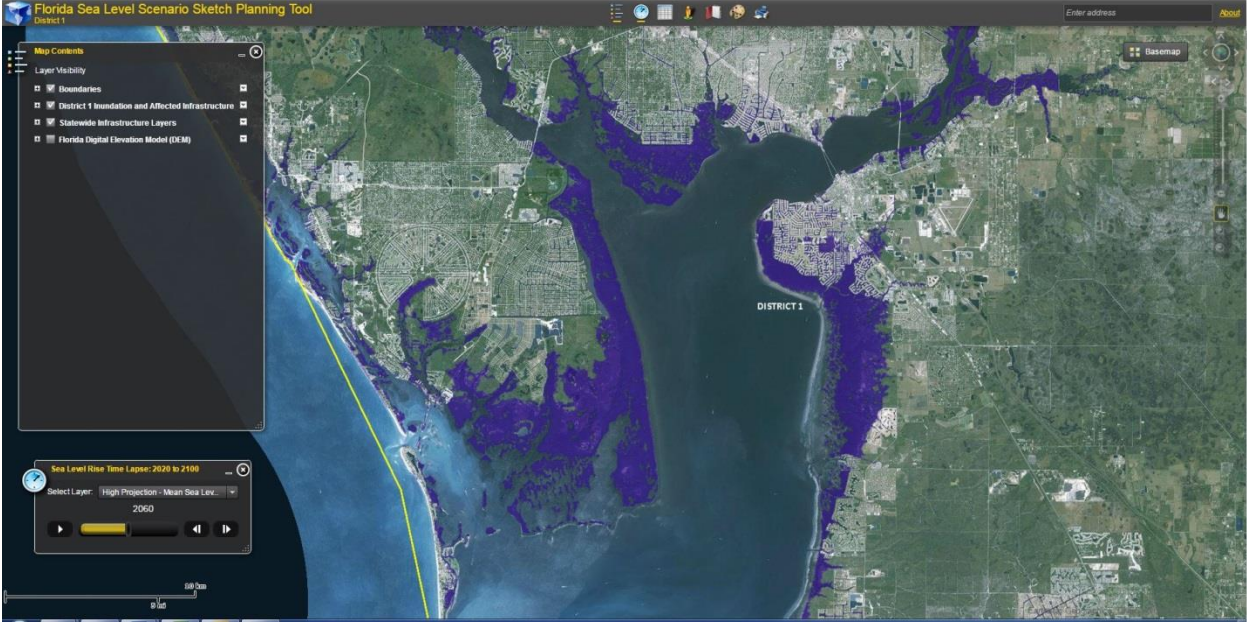
Map 18



Map 19



Map 20



Map 21

