

Tri-Rail Coastal Link Update and Conversation

December 16, 2016

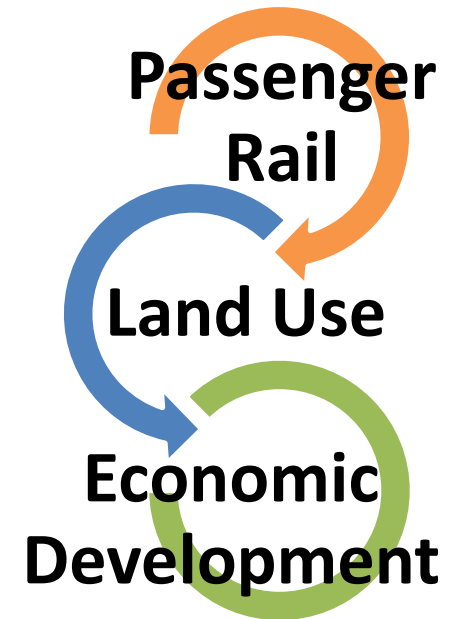
South Florida Regional Transportation Authority

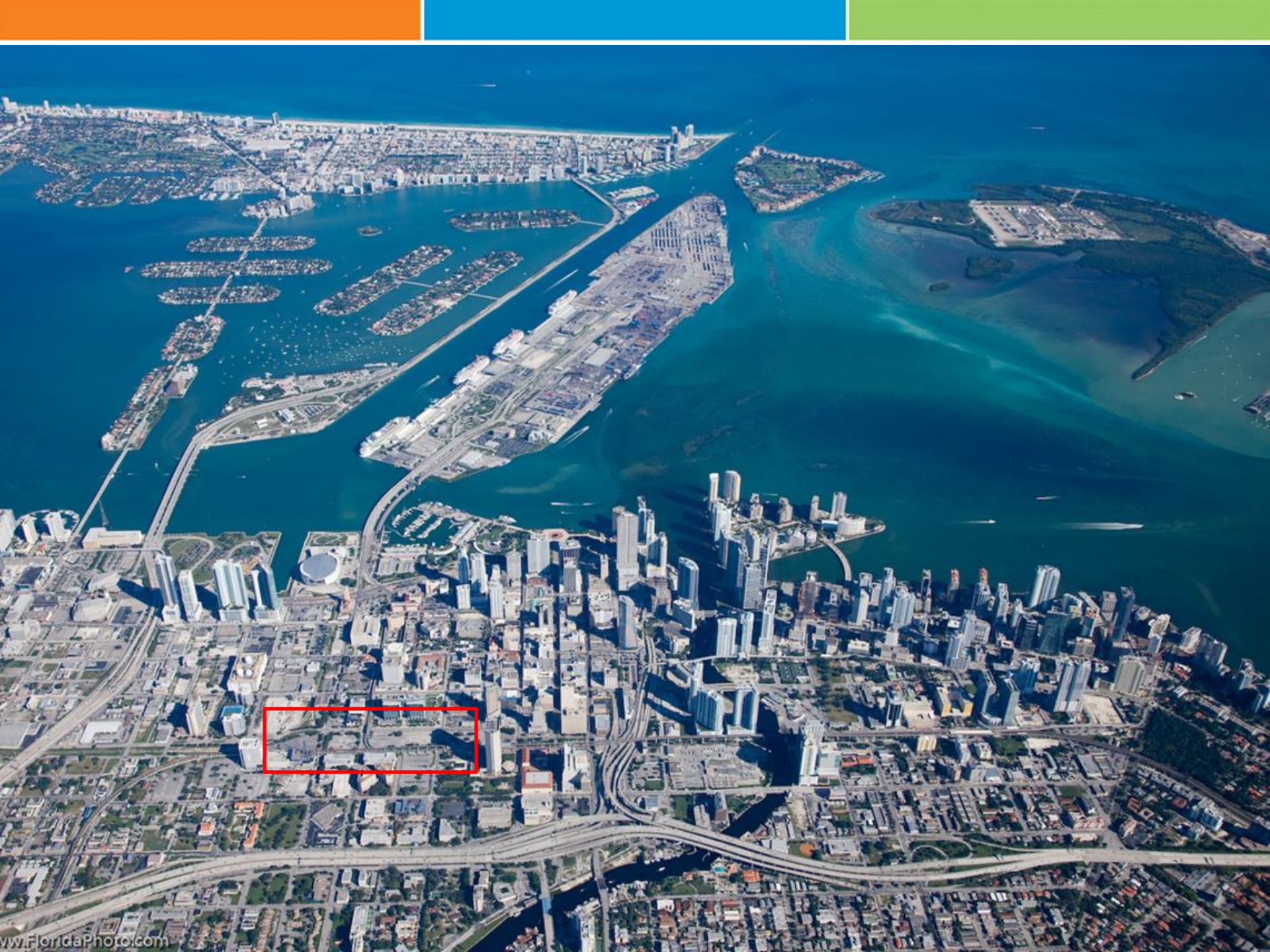
Jack Stephens, Executive Director



TRI-RAIL DOWNTOWN MIAMI LINK

A Public Private Partnership





MiamiCentral



ONE MIAMICENTRAL
600,000 RSF [Office]
280 Residences
250 Hotel Rooms

800 RESIDENTIAL UNITS
North Tower: 30 Floors
400 Parking Spaces
South Tower: 33 Floors
400 Parking Spaces

TWO MIAMICENTRAL
190,000 RSF [Office]
10 Floors
300 Parking Spaces

RETAIL
182,000 SF

THREE MIAMICENTRAL
90,000 RSF [Office]
35,000 RSF [Retail]
12 Floors
1,100 Parking Spaces



THREE MIAMI CENTRAL

North Elevation
3 MIAMICENTRAL

MiamiCentral



Private Sector Contribution

- Political Support (Project Champion)
- Prime land in downtown (old rail station)
- Development expertise
- No interest public sector loan during construction
- Intercity Rail

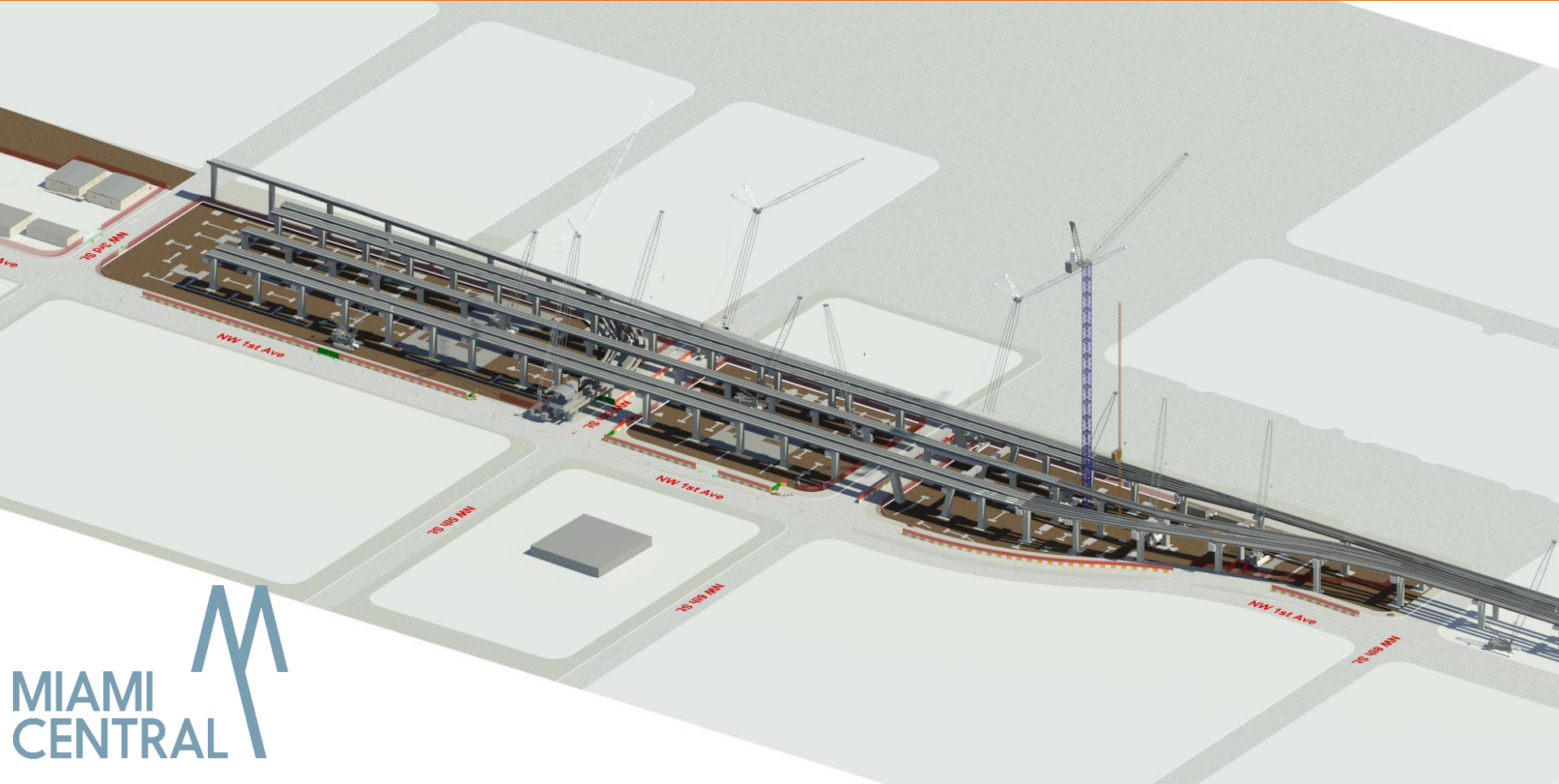


Foundations ■ Q4 – 2015



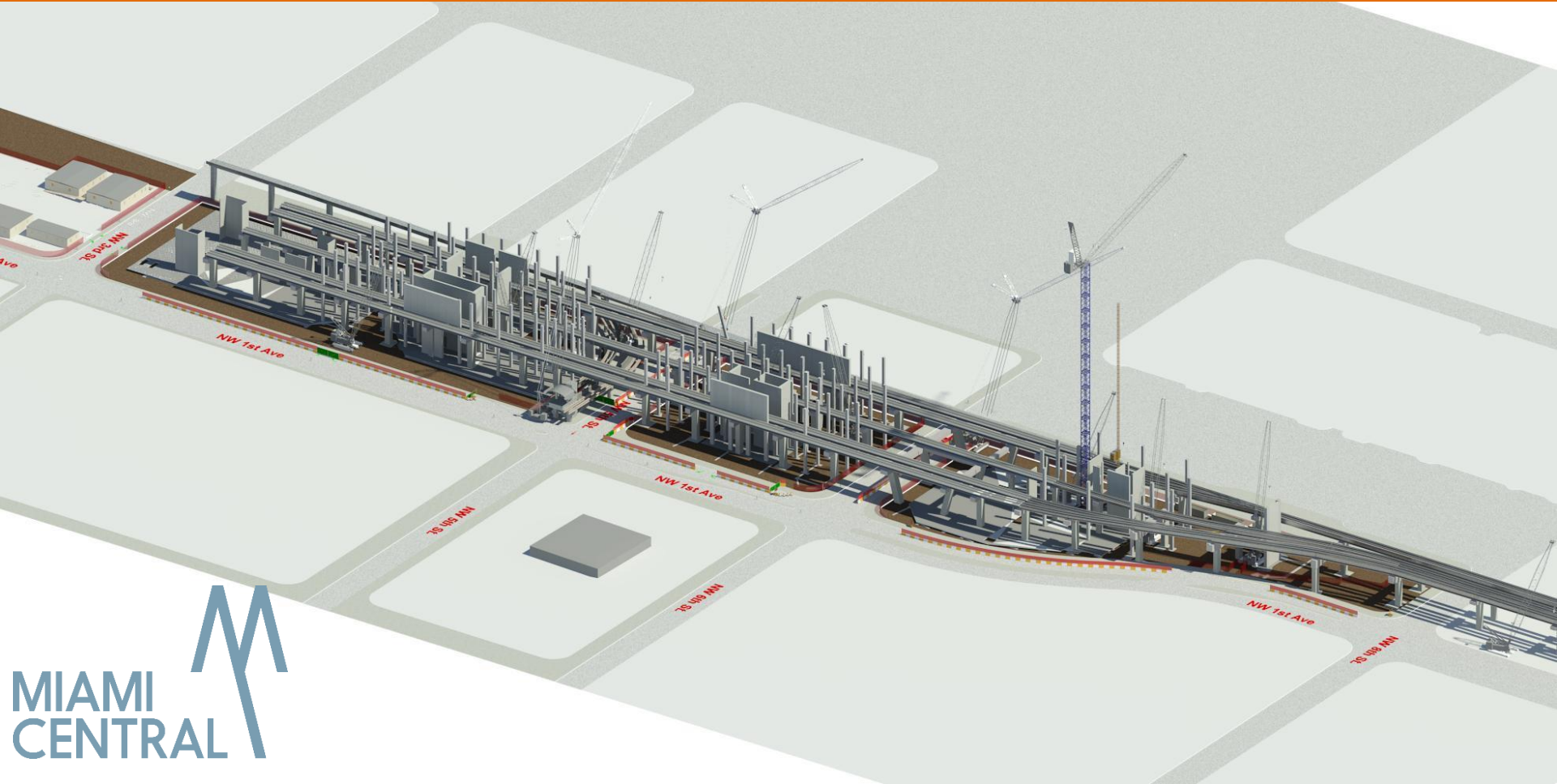
M
MIAMI
CENTRAL

Train Infrastructure ■ Q4 – 2016



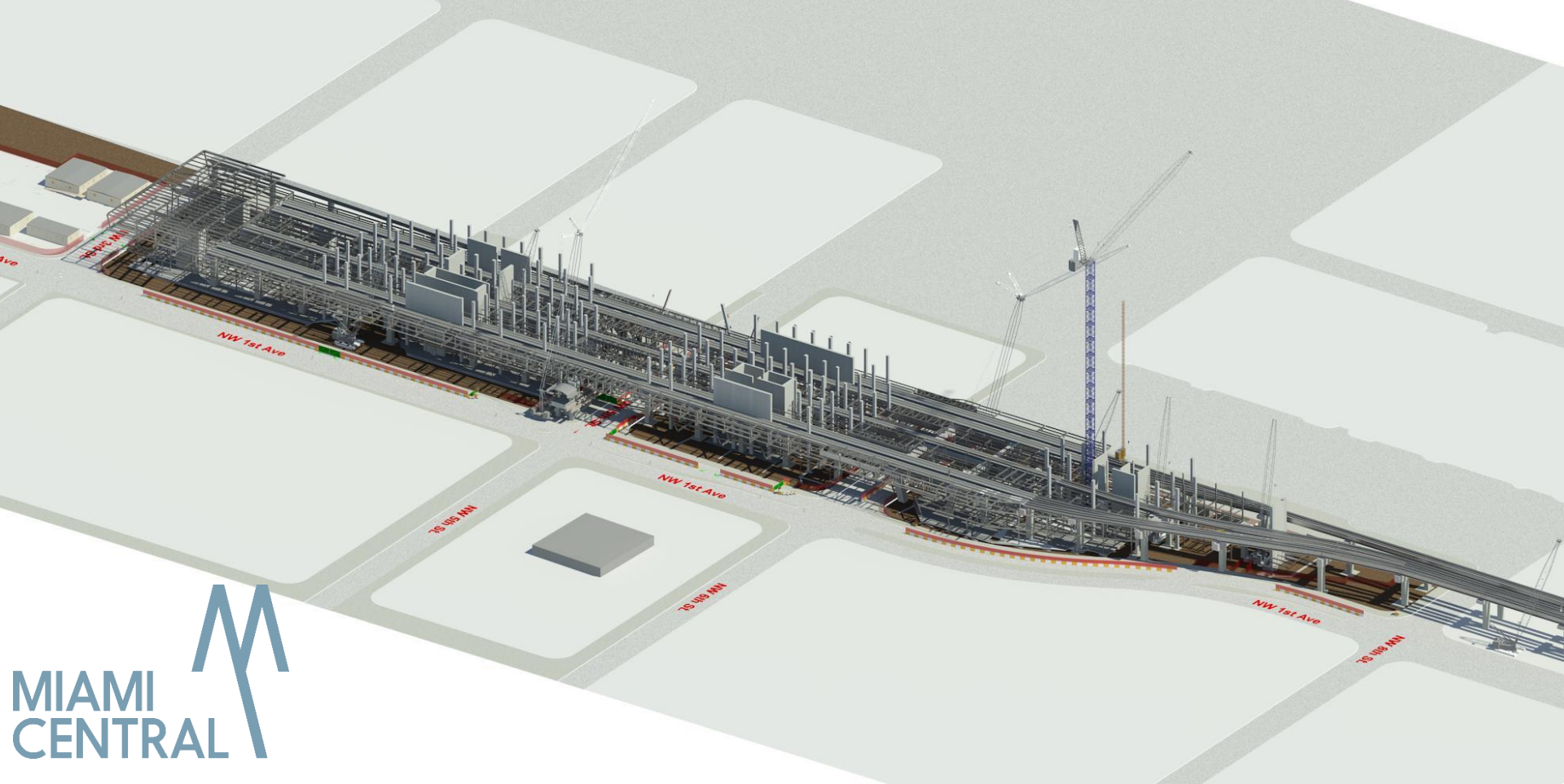
MIAMI
CENTRAL

Concrete Infrastructure ■ Q1 – 2017



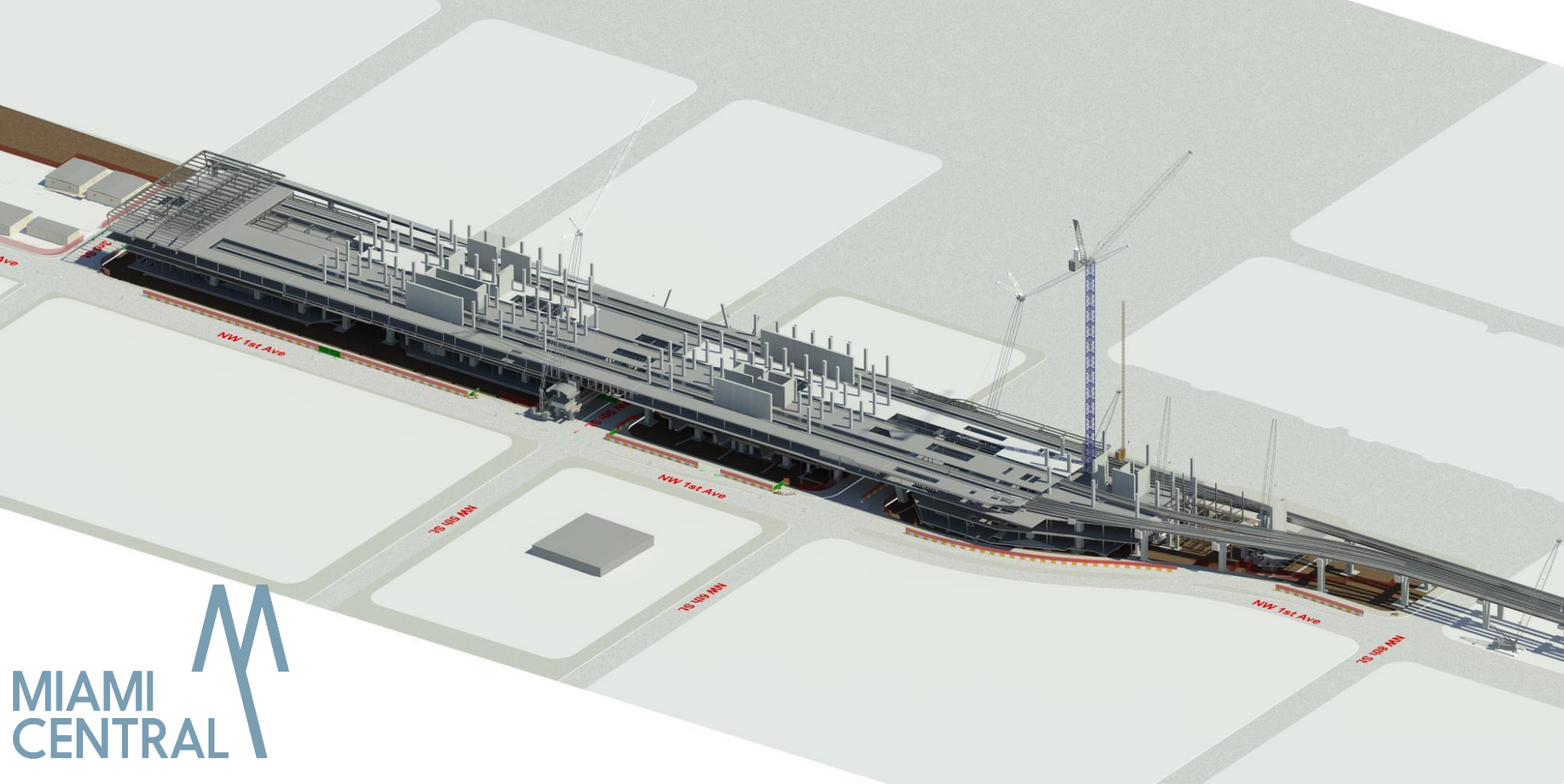
MIAMI
CENTRAL

Steel Structure ■ Q1 – 2017



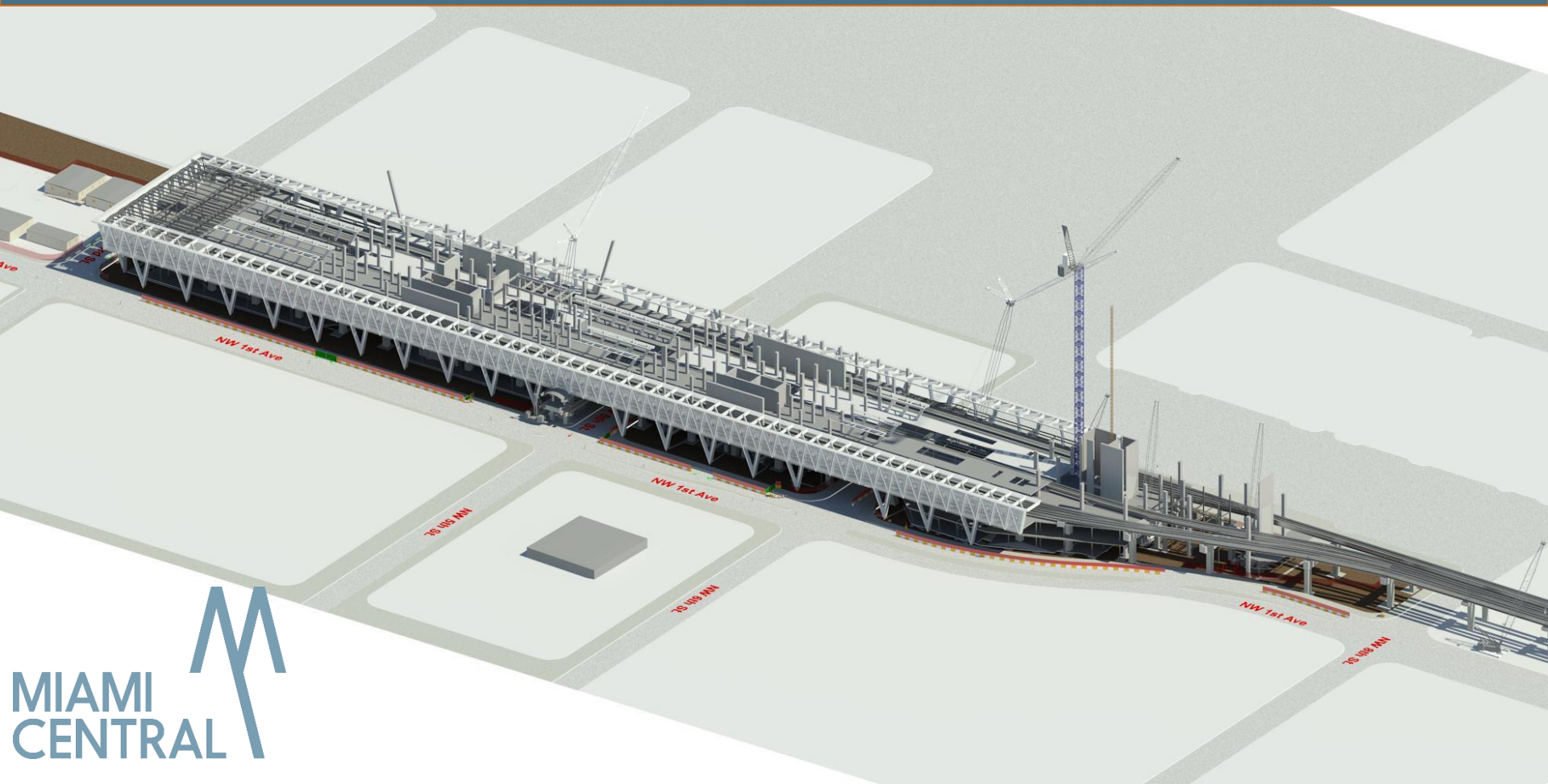
M
MIAMI
CENTRAL

Platforms ■ Q2 – 2017

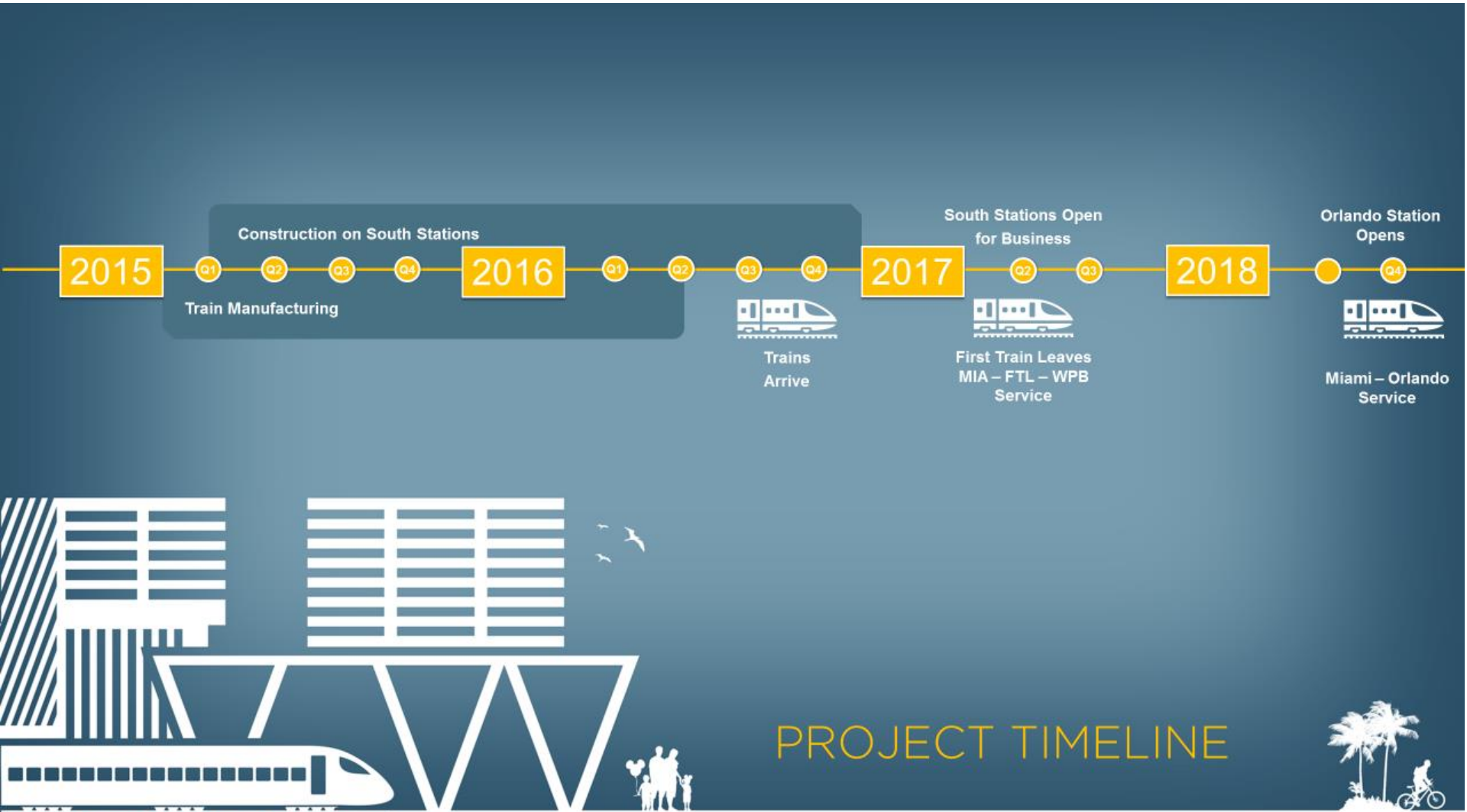


MIAMI
CENTRAL

Pre-Cast Canopies ■ Q3 – 2017



MIAMI
CENTRAL



PROJECT TIMELINE

Brightline Intercity Rail



Service begins Summer 2017

<http://gobrightline.com>

Public Sector Contribution



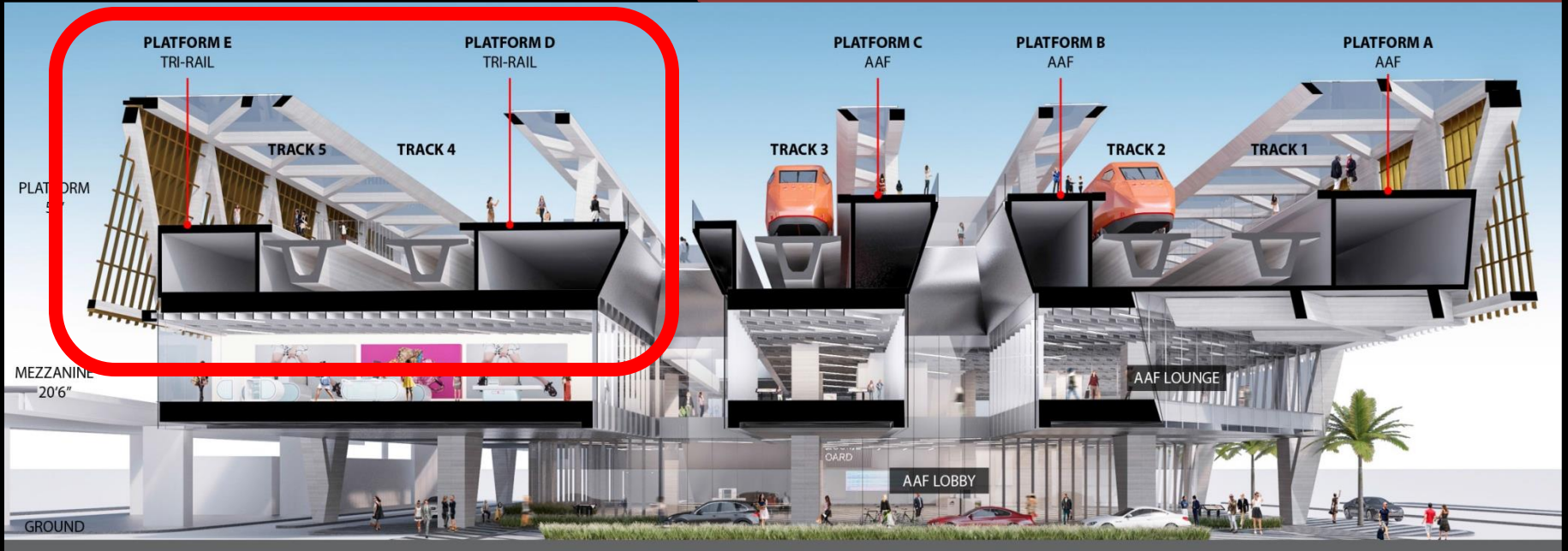
Public Funding Plan - Tri-Rail Downtown Miami Link

Funding Partner	Project Element	Total
SEOPW CRA	Station	\$17,528,049
Omni CRA	Station	\$3,750,000
City of Miami	Station	\$8,097,030
Bayfront Park Trust	Station	\$250,000
Miami Downtown Development Authority	Station	\$1,267,000
Miami Dade County	Station	\$13,900,000
South Florida Regional Transportation Authority	Rail Infrastructure (Positive Train Control)	\$3,107,921
South Florida Regional Transportation Authority	Rail Infrastructure and Rail Corridor Easement	\$17,190,000
South Florida Regional Transportation Authority	Station	\$5,350,000
	Total Project Cost	\$70,440,000

MiamiCentral Station

Tri-Rail

Brightline



Cross section of the “MiamiCentral” Station in Downtown Miami

Tri-Rail Downtown Miami Link

- Two-year Negotiation and Financial Plan
- 18 month Implementation Schedule

*Planned Service
Late 2017*



TRI RAIL

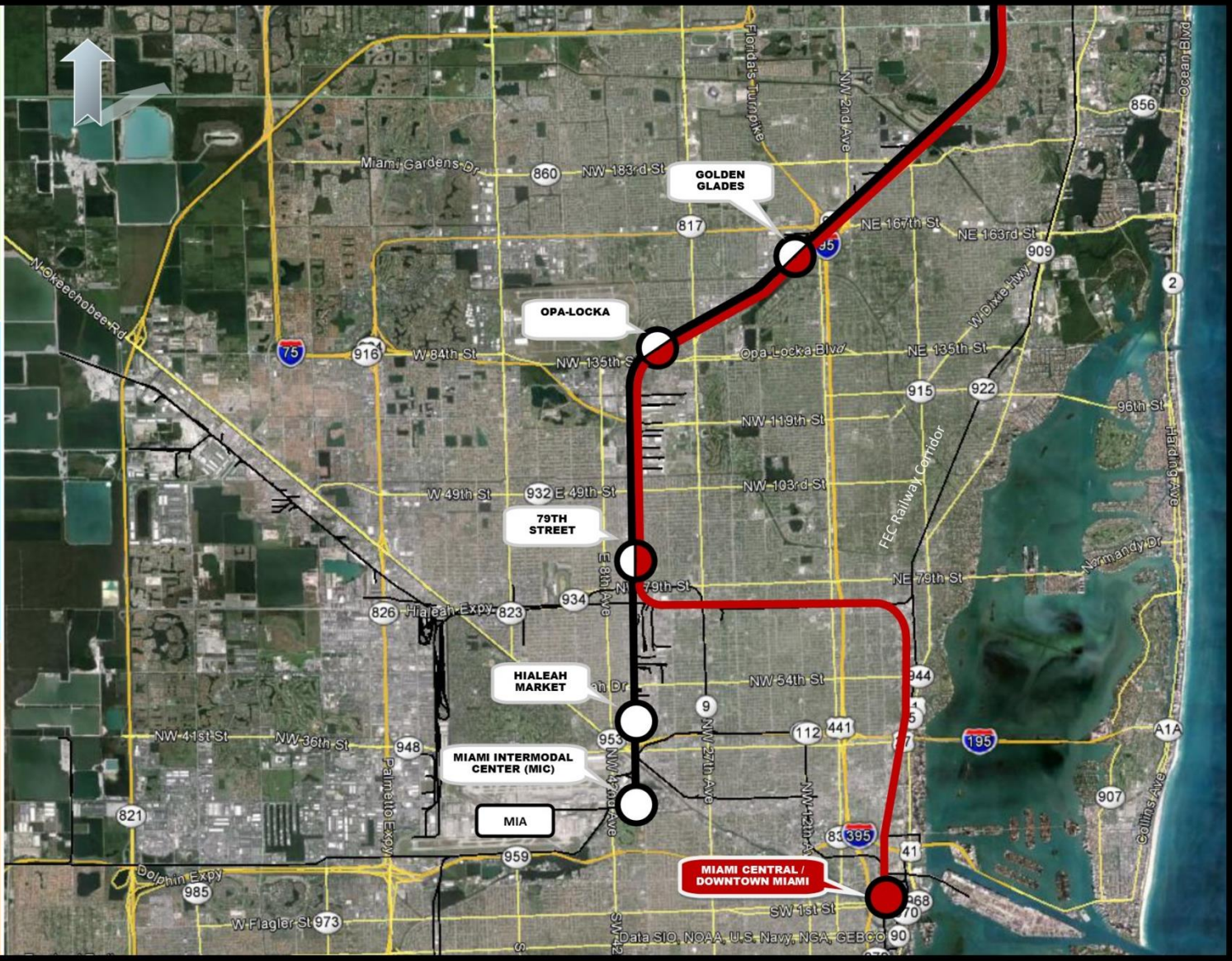
DOWNTOWN MIAMI LINK

Rail Service Can Begin by 2017

Legend:

- Existing Tri-Rail Service
- Downtown Miami Link

Draft 4/11/2016



Potential Future Tri-Rail Coastal Link Phase in Miami-Dade County

TRI & RAIL DRAFT
Coastal Link

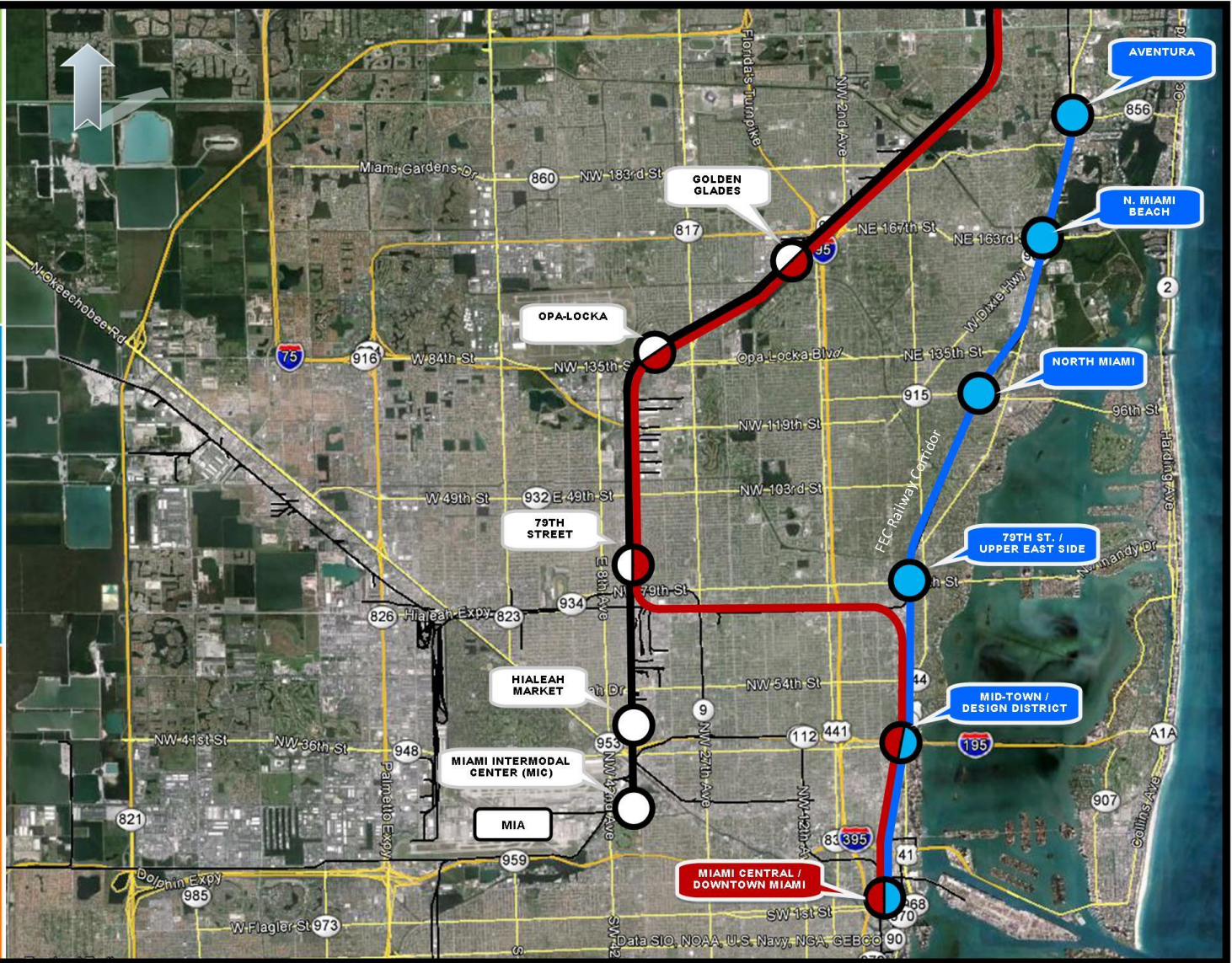
**Phase 1
 Northeast
 Corridor
 Link**

NOTE: ALL TRI-RAIL COASTAL LINK STATION LOCATIONS ARE APPROXIMATE AND SUBJECT TO CHANGE

Legend:

-  Existing Tri-Rail Service
-  Downtown Miami Link
-  Tri-Rail Coastal Link Phase 1 Aventura Link

Draft 5/26/2016



Potential Future Tri-Rail Coastal Link Phases for Broward County



DRAFT

Coastal Link

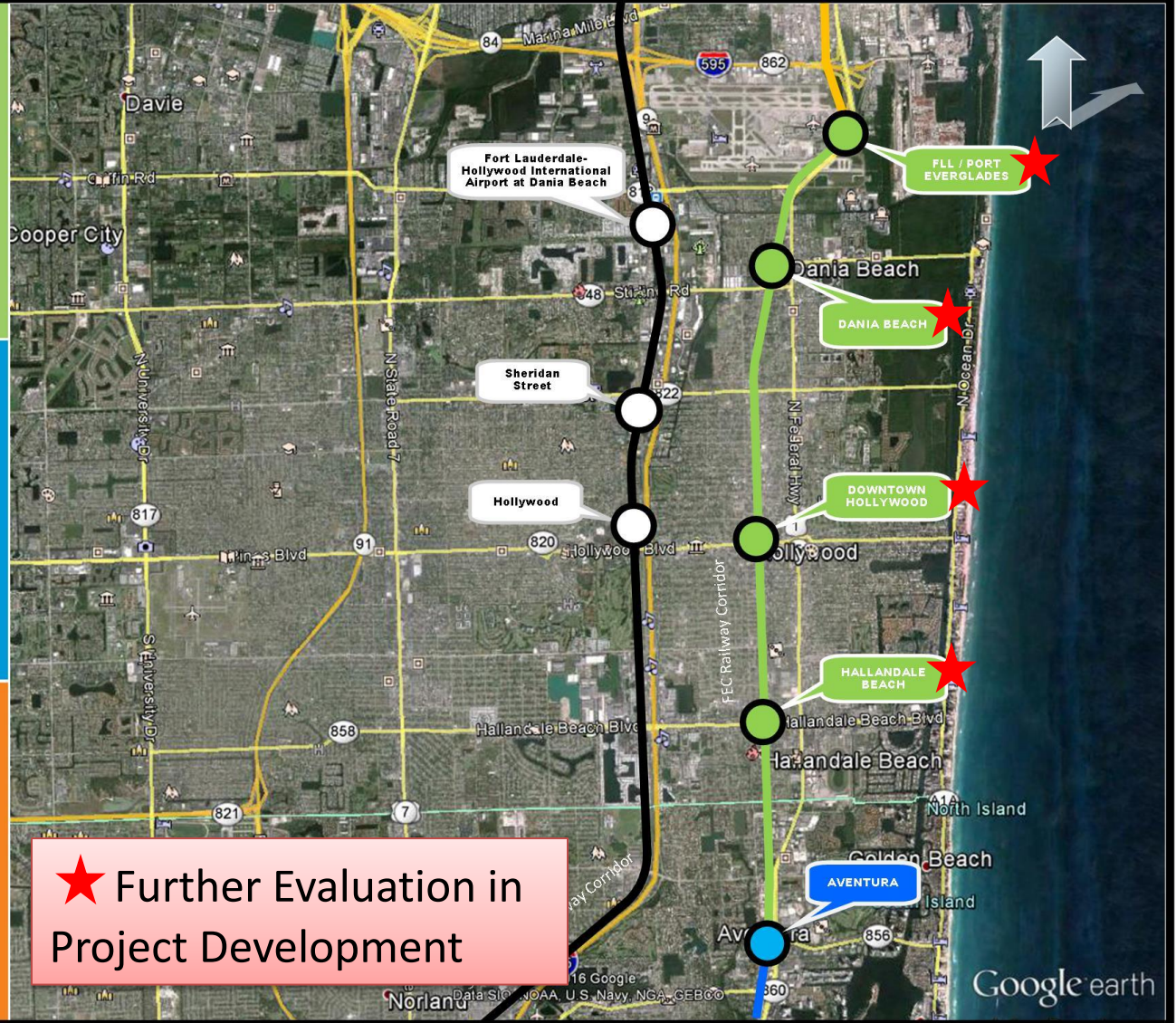
Phase 2 Fort Lauderdale Airport Link

NOTE: ALL TRI-RAIL COASTAL LINK STATION LOCATIONS ARE APPROXIMATE AND SUBJECT TO CHANGE

Legend:

- Existing Tri-Rail Service
- Tri-Rail Coastal Link Phase I (aka Aventura Link)
- Tri-Rail Coastal Link Phase 2
- Tri-Rail Coastal Link Phase 3

Draft 5/26/2016



★ Further Evaluation in Project Development



DRAFT

Coastal Link

Phase 3 Fort Lauderdale and International Airport/Port Everglades Areas

NOTE: ALL TRI-RAIL COASTAL LINK STATION LOCATIONS ARE APPROXIMATE AND SUBJECT TO CHANGE

- Legend:
- Existing Tri-Rail Service
 - Tri-Rail Coastal Link Phase 2
 - Tri-Rail Coastal Link Phase 3
 - "New" New River Railroad Bridge (Phase 3)

Draft 5/26/2016







Coastal Link

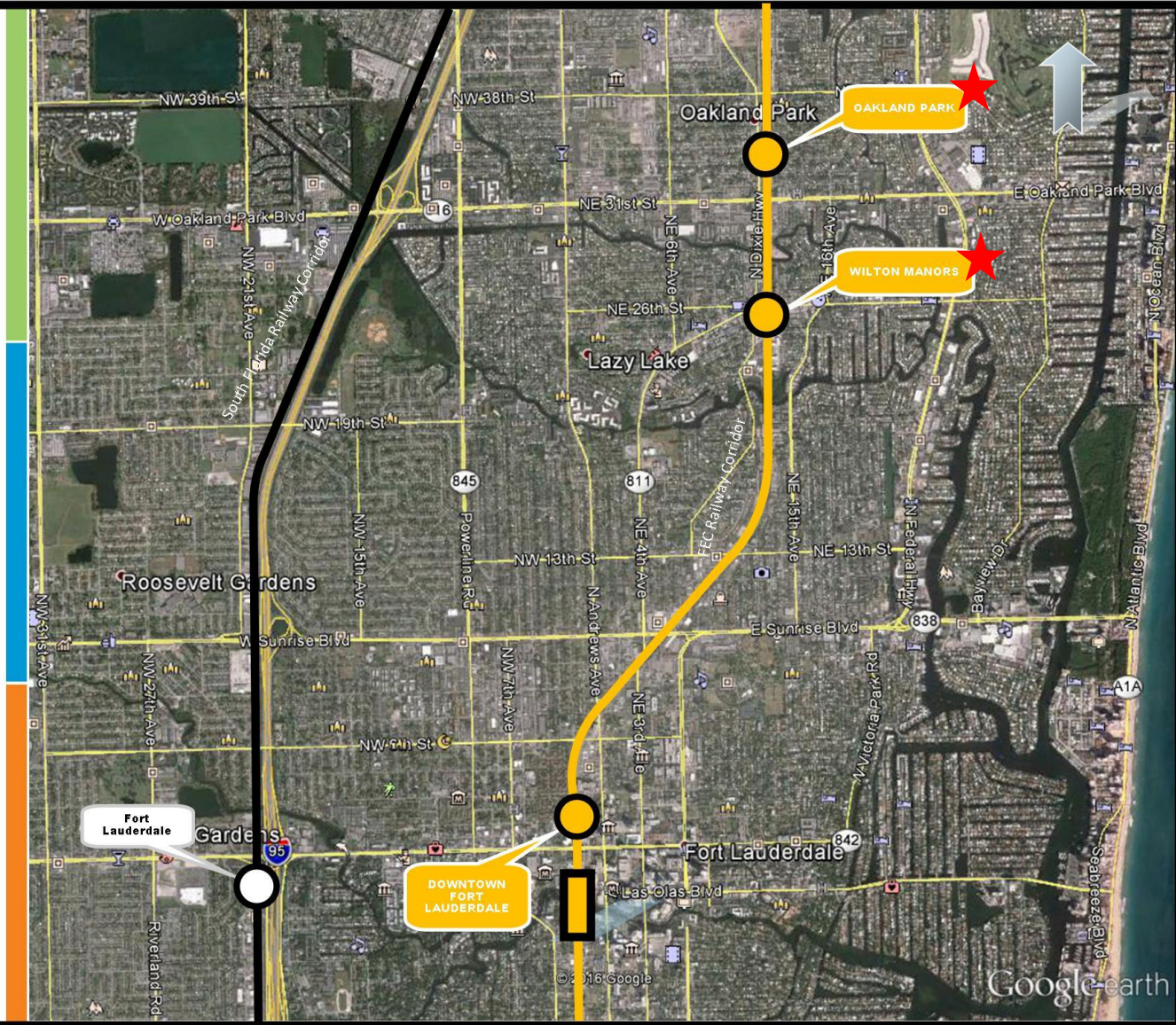
Phase 3 Oakland Park, Wilton Manors and Fort Lauderdale Areas

NOTE: ALL TRI-RAIL COASTAL LINK STATION LOCATIONS ARE APPROXIMATE AND SUBJECT TO CHANGE

Legend:

-  Existing Tri-Rail Service
-  Tri-Rail Coastal Link Phase 2
-  Tri-Rail Coastal Link Phase 3
-  "New" New River Railroad Bridge (Phase 3)

Draft 5/26/2016



Coastal Link

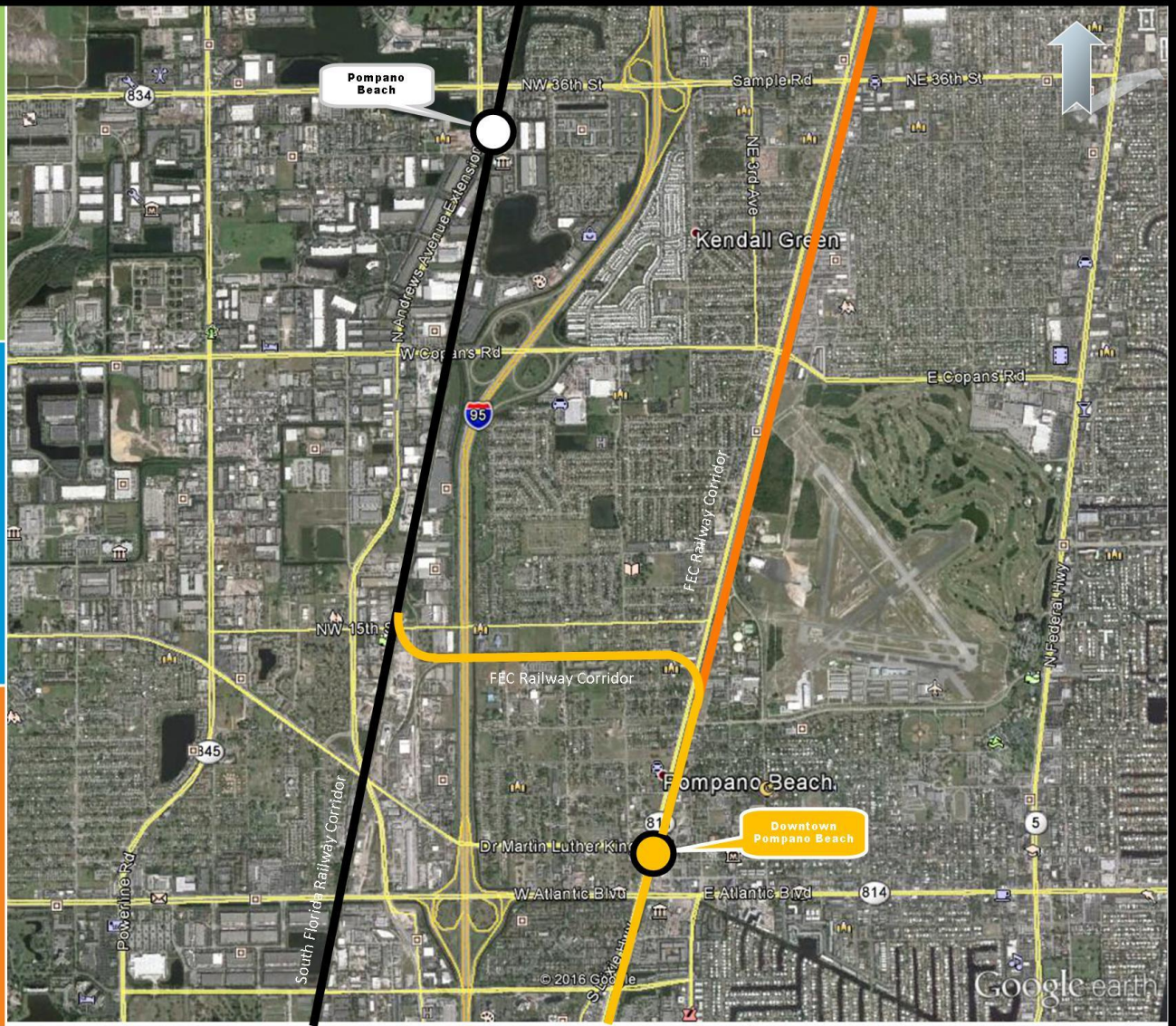
Phase 3 Pompano Beach Cross-over Area

NOTE: ALL TRI-RIAL COASTAL LINK STATION LOCATIONS ARE APPROXIMATE AND SUBJECT TO CHANGE

Legend:

- Existing Tri-Rail Service
- Tri-Rail Coastal Link Phase 2
- Tri-Rail Coastal Link Phase 3
- Tri-Rail Coastal Link Phase 4

Draft 5/26/2016



Potential Future Tri-Rail Coastal Link Phases for Palm Beach County

TRI RAIL
Coastal Link

DRAFT

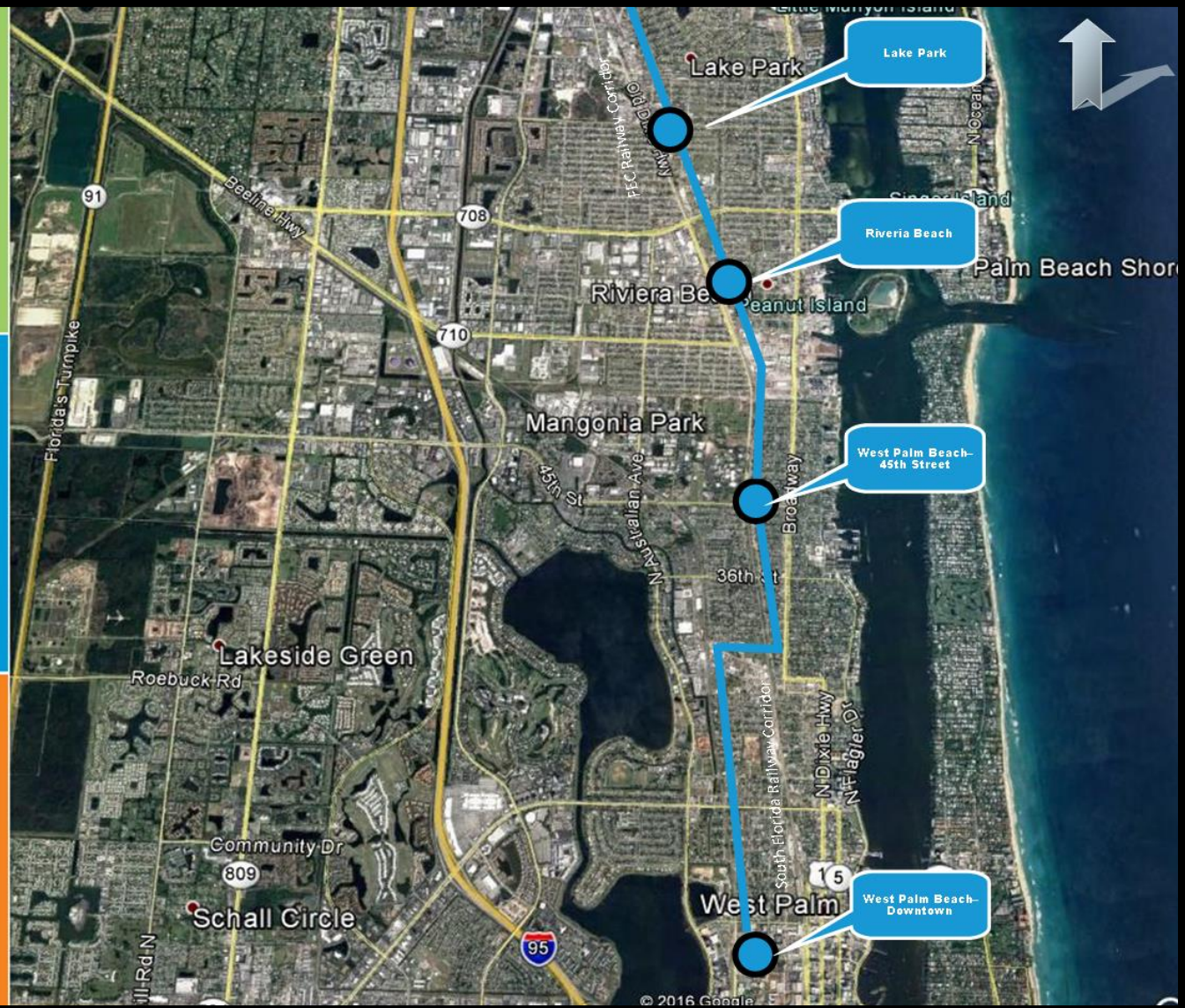
Jupiter Extension

NOTE: ALL TRI-RAIL COASTAL LINK STATION LOCATIONS ARE APPROXIMATE AND SUBJECT TO CHANGE

Legend:

— Jupiter Extension

Draft 12/13/2016



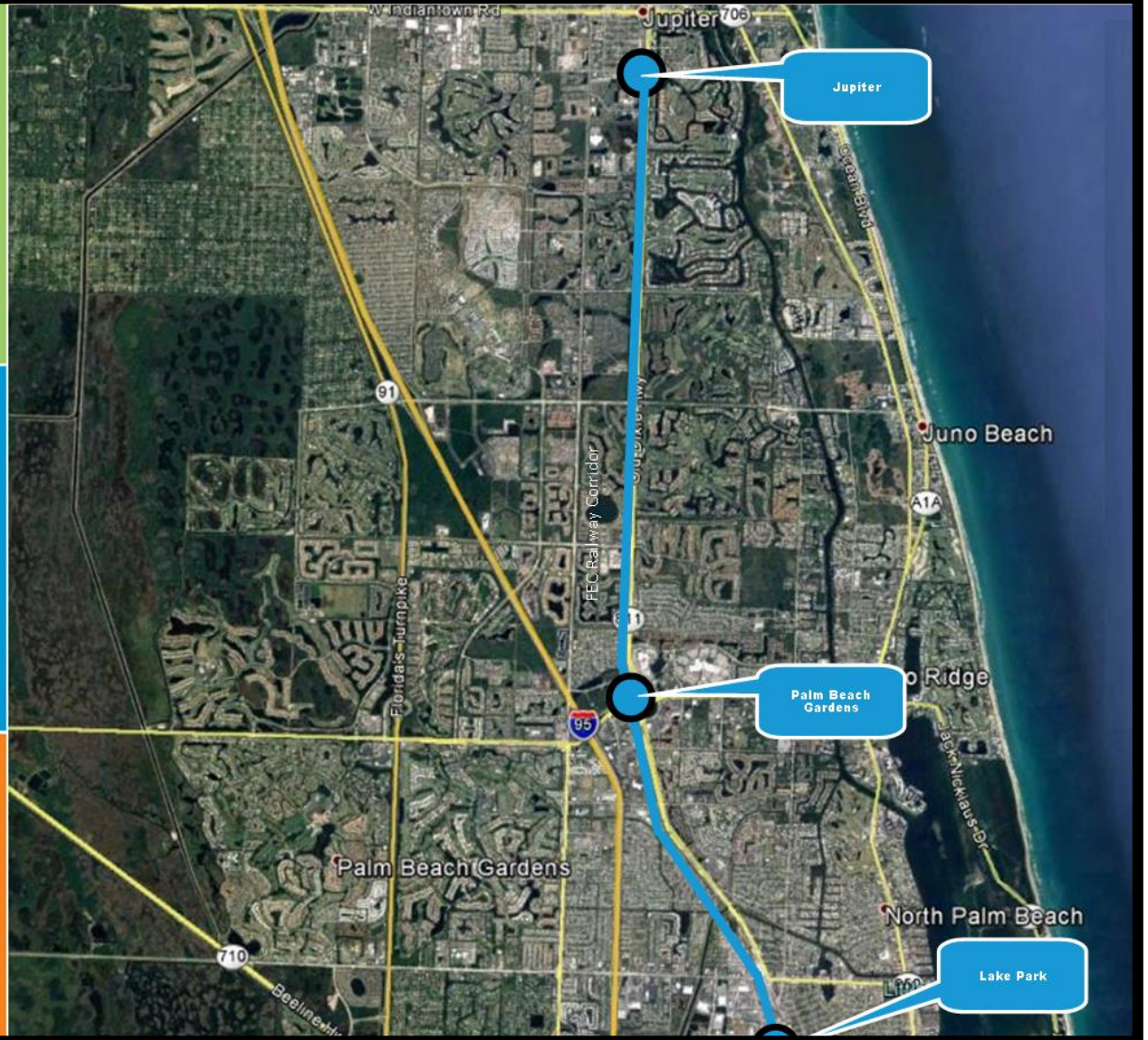
Coastal Link

Jupiter Extension

NOTE: ALL TRI-RIAL COASTAL LINK STATION LOCATIONS ARE APPROXIMATE AND SUBJECT TO CHANGE

Legend:

— Jupiter Extension





Potential Regional Funding Sources Evaluated by TRCL Finance Subcommittee



	Option Name	Source with Florida Statute Reference
1	Special Assessment	Special District (Dependent). Chap. 189, F.S.
2	Special Assessment	Special District (Independent – non-RTA). Chap. 189, F.S.
3	Special Region Tax	Independent RTA. Chap. 163, F.S.
4	Property Tax Increment	Community Redevelopment Districts. Chap. 166, F.S.
5	Sales Tax	Charter County Regional Transportation System. Chap 212, F.S.
6	Sales Tax	Local Government Infrastructure Surtax. Chap. 212, F.S.
7	Transient Sales Tax	Tourist Development Tax. Chap. 125, F.S.
8	Gas Tax	Local Option Gas Tax. Chap. 336, F.S.
9	Rental Car Surcharge	Rental Car Surcharge. Chap. 212, F.S.
10	Registration Fee (Auto)	Registration Fee. Chap. 320, F.S.
11	Annual Station Fee	Municipal Agreement with SFRTA

What's Required to Move Forward?

1. Local Funding
 - Capital
 - Operating & Maintenance
2. Negotiate Corridor Access Fee
3. Project Development and Federal Discretionary Grants
4. Design and Construction